

Executive Director's Report

Andrew Berman



*gvs*hip



We Can Save It!

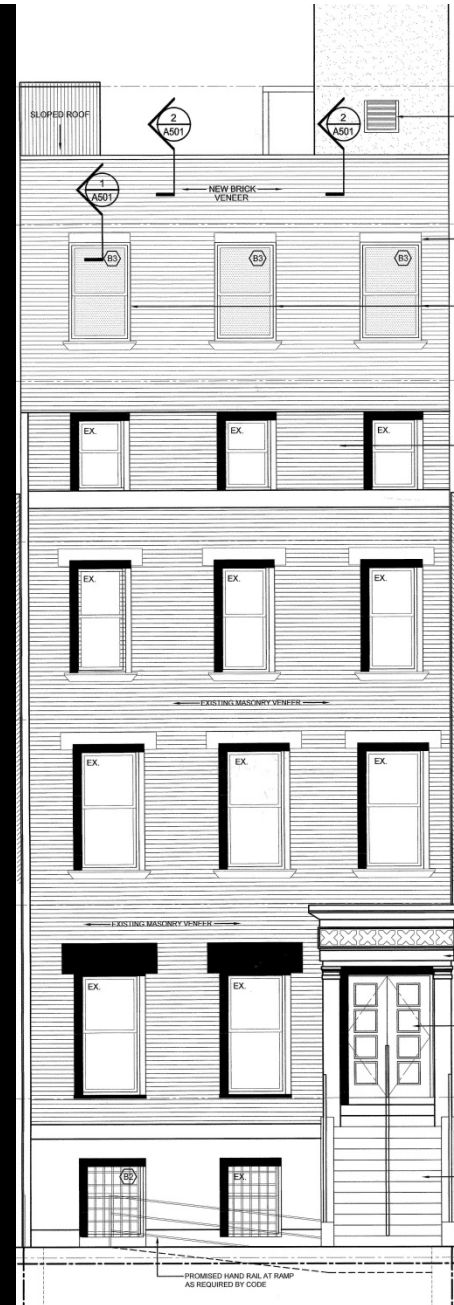


Landmark 128 E 13 St

Greenwich Village Society for Historic Preservation
www.gvshp.org

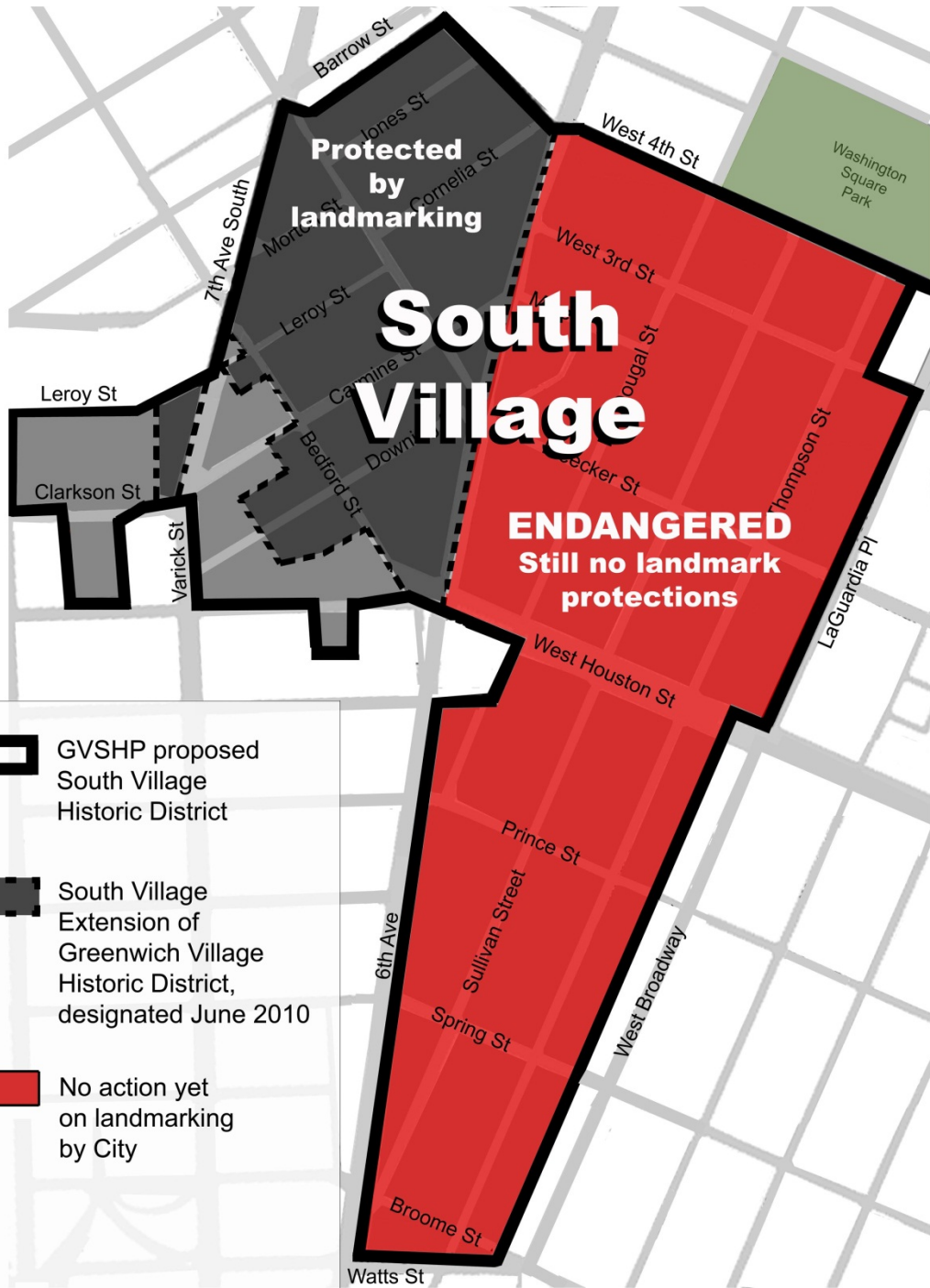


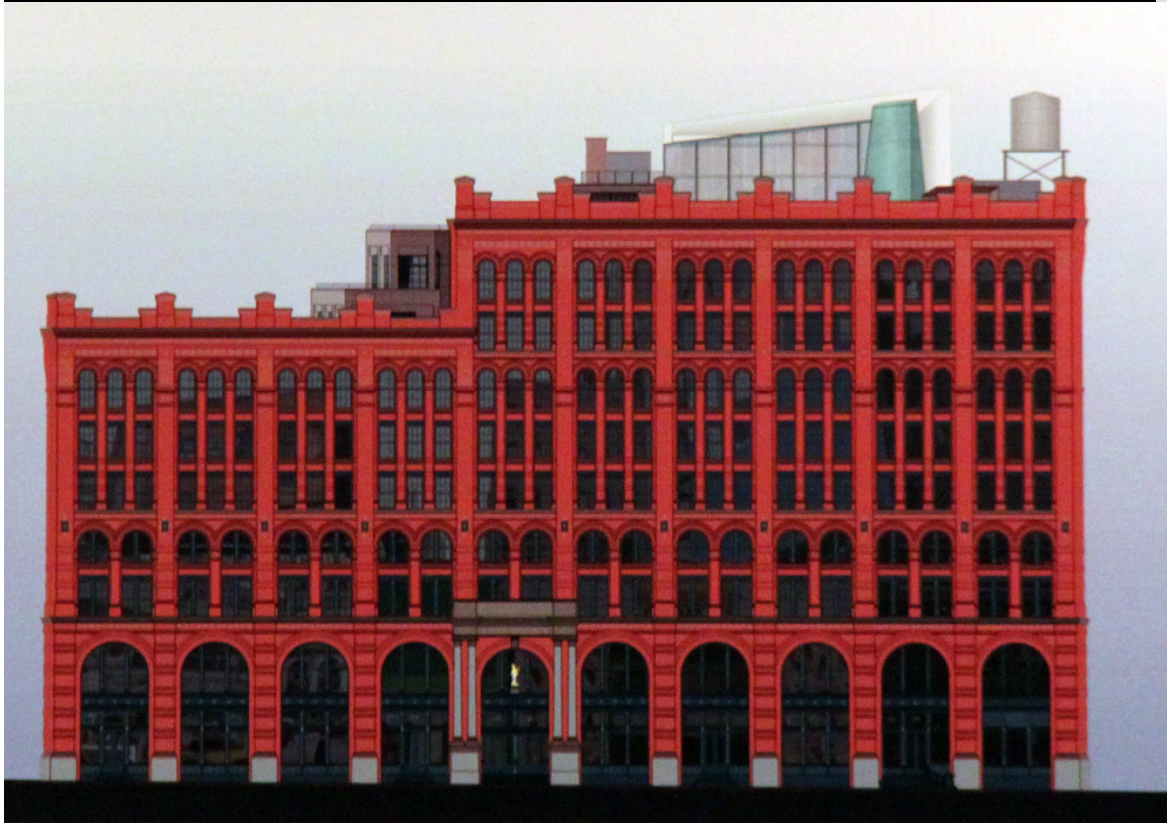




315 East 10th Street currently (l.), with proposed additions (r.).







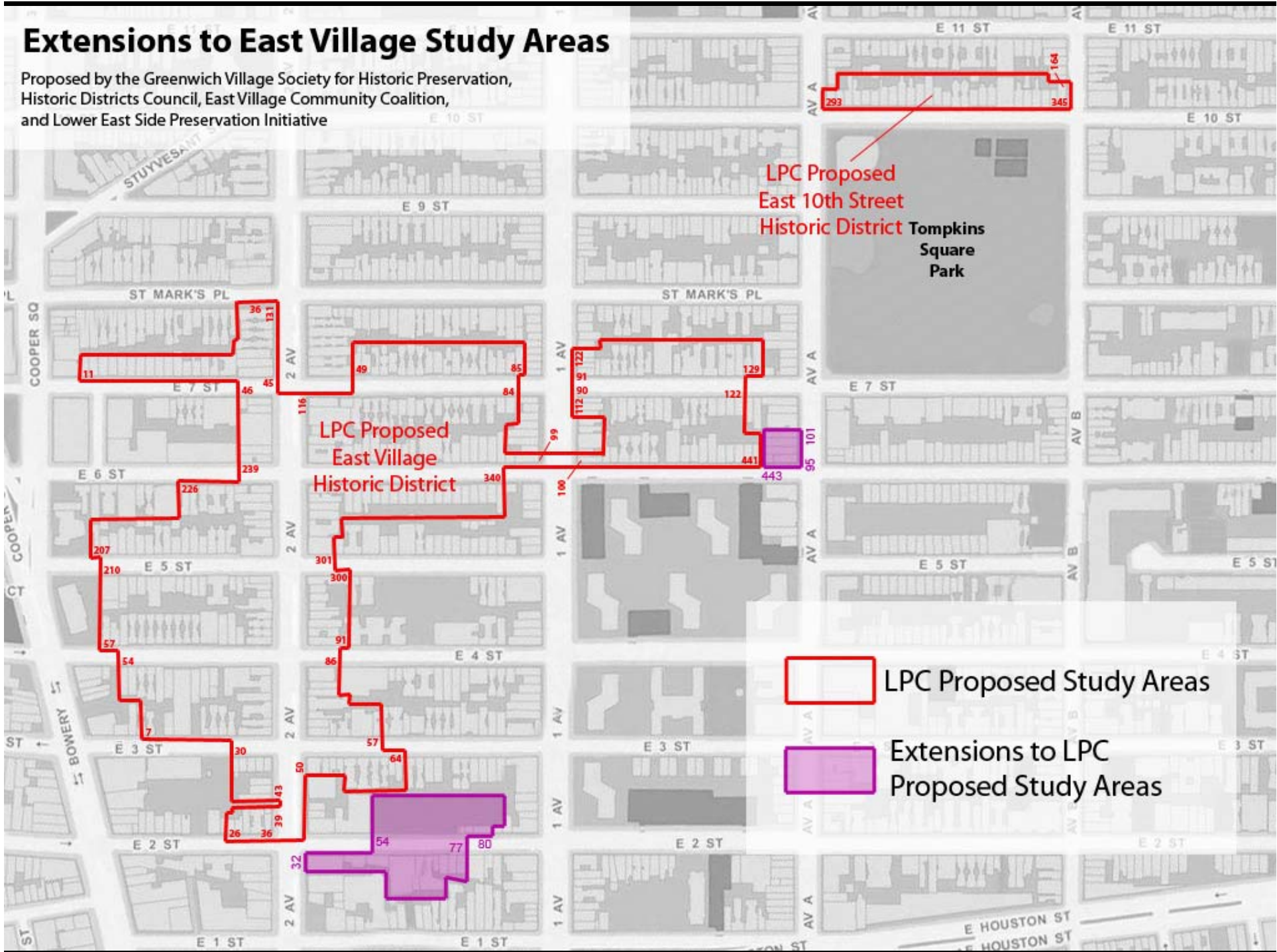
Proposed West Elevation



Proposed North Elevation

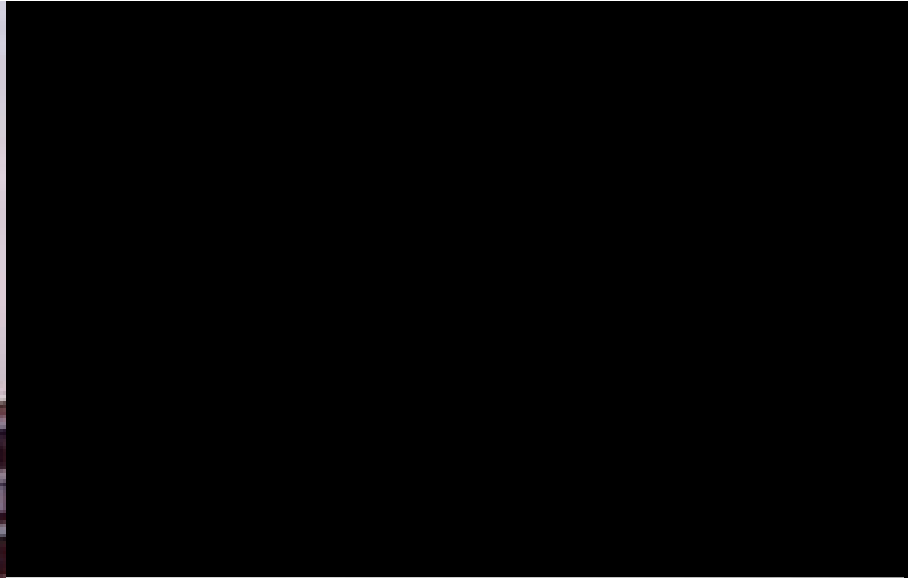
Extensions to East Village Study Areas

Proposed by the Greenwich Village Society for Historic Preservation, Historic Districts Council, East Village Community Coalition, and Lower East Side Preservation Initiative

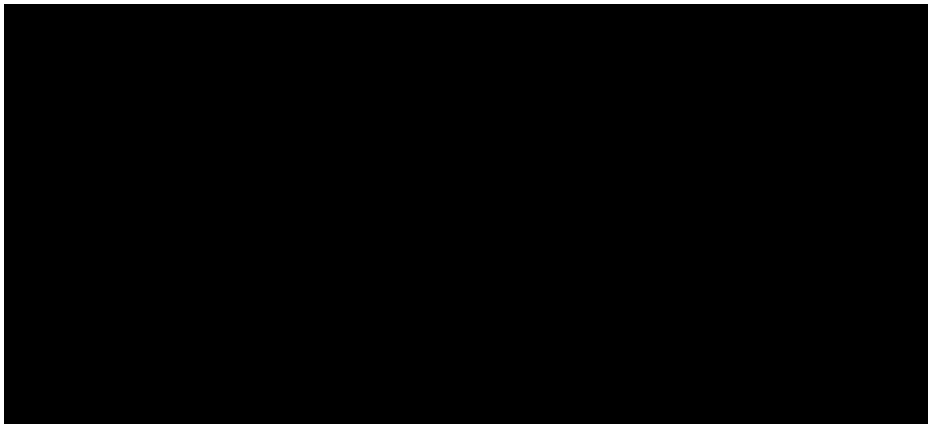








Proposed Chelsea Market Additions









NYU Core Possibilities

SMWM

IN ASSOCIATION WITH
GRIMSHAW
TOSHINO MORI ARCHITECT
OLIN PARTNERSHIP

NYU
PLANS
2031

University Village Site

"PINWHEEL TOWER"



Bird's Eye View of University Village Site Looking Southeast



Sch
in G
Chil
Prog



Sch
in G
Chil
Prog



Sch
in G
Chil
Prog



Justus H. Schwab, 1847 – 1900

An extraordinary figure in the socialist and anarchist movements of the late 19th century, German-born Justus H. Schwab lived with his family and operated a saloon at 50 East 1st Street for nearly 30 years.

Schwab's saloon was an epicenter for social radicalism and was frequented by anarchist Emma Goldman and writer Ambrose Bierce among many others. Schwab contributed significantly to the reputation of the Lower East Side and present-day East Village as a center of transformative social and political movements.

Placed by the Greenwich Village Society
for Historic Preservation
with the generous support of the Two Boots Foundation







Presented by the
Greenwich Village Society
for Historic Preservation



A Continuing Education Course for Real Estate Brokers

The Architectural and Cultural Heritage of Greenwich Village, the East Village, & Lower East Side

This three-day 22.5-hour course shakes up the usual continuing education routine with real life examples, walking tours, and museum visits.

Taught by a wonderful mix of professionals from the field, you will also experience our downtown neighborhoods' exciting history through afternoon walking tours led by one of *Travel & Leisure* magazine's "Best Tour Guides," with visits to the **Merchant's House Museum**, the **Tenement Museum**, and the **Eldridge Street Synagogue**.



Course topics include:

Historic preservation and the importance of the New York City Landmarks Law for both brokers and buyers

The influence of Classical architecture on the stylistic developments of townhouses, apartment buildings, and tenements.

The evolution of regulatory reforms and zoning laws that shaped urban design and building types in the context of socio-economic, cultural, and political forces

The realities of working with the Department of Buildings (DOB) and other NYC regulatory bodies today

Department of State mandated three-hour course on Fair Housing and Discrimination.

CLASS SCHEDULE

8:45 A.M. TO 5:30/6:00 P.M.

WEDNESDAY, NOVEMBER 9

TUESDAY, NOVEMBER 15

TUESDAY, NOVEMBER 29



This is a 22.5 hour course. Registrants must complete all three days.

Classes take place at the historic Neighborhood Preservation Center, conveniently located at 232 E. 11th Street between 2nd & 3rd Avenues.

REGISTRATION & INFORMATION

For a full itinerary and schedule, course policy information, or to register online, visit gvshp.org/continuinged or call (212) 475-9585 ext. 39 with questions.

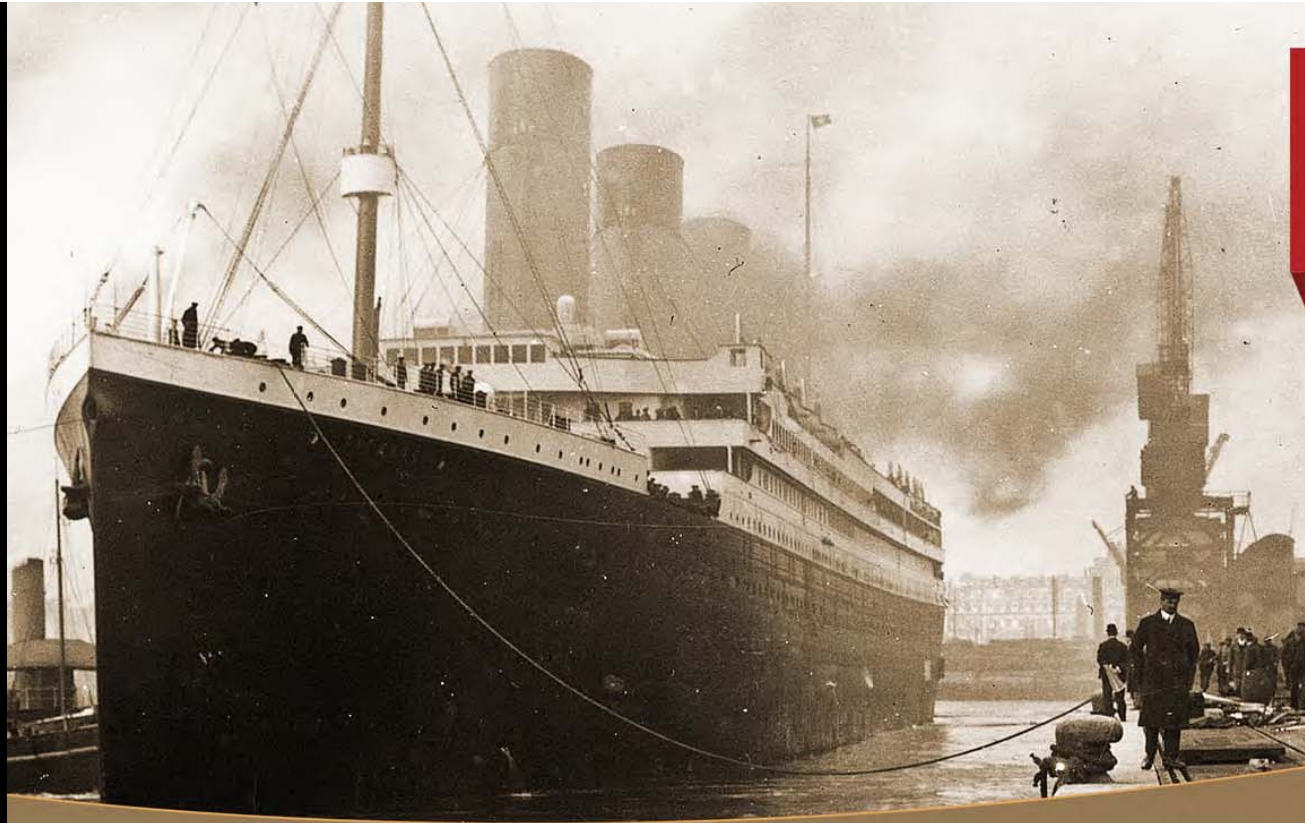
Fee: \$145 for GVSHP members / \$195 others (includes membership in GVSHP)
Fees include admission costs for walking tours and museums, plus breakfast and snacks. Lunch is not provided.

Course approved by the New York Department of State for 22.5 continuing education credits.

The Greenwich Village Society for Historic Preservation is a nonprofit organization that works to preserve the architectural heritage and cultural history of Greenwich Village, the East Village, and NoHo through research, education, and advocacy.

Greenwich Village Society for Historic Preservation | 232 East 11th Street, New York, NY 10003 | (212) 475-9585 | www.gvshp.org





THE TITANIC AND THE VILLAGE

100 Years after the Tragedy

Tuesday, March 13th
6:30 - 8:30 P.M.

THE JANE HOTEL

113 Jane Street
(at West Street)



Presented by the

BROKERS PARTNERSHIP

of the Greenwich Village Society
for Historic Preservation



With the generous support of

THE JANE HOTEL

THE CENTENNIAL of the *Titanic* tragedy has historic roots in the West Village. Survivors arrived on the *RMS Carpathia* to Pier 54 at Little West 12th Street. Many went to the American Seamen's Friend Society Sailors' Home and Institute (known today as The Jane), then just five years old, as they awaited their next move.

Join us at the landmarked Jane, site of the first unofficial memorial and inquisition after the sinking, as we look back in time with special guests of the evening, Charles A. Haas and John P. Eaton, co-founders of the Titanic International Society and authors of *Titanic: Triumph and Tragedy* and *Titanic: Destination Disaster* (available for sale and signing). They will present historic images and memorable stories as well as answer your questions.



The Ballroom of the Jane Hotel

TICKETS \$35 each for GVSHP Members and \$45 for non-members (ticket includes 2 drink vouchers)

VISIT www.gvshp.org/titanic or call (212) 475-9585 ext. 32 to reserve your space today!

Greenwich Village Society for Historic Preservation | 232 East 11th Street, New York, NY 10003 | (212) 475-9585 | www.gvshp.org





Sponsored by the
Proposed Mercer St. Building
248 feet / 14 stories

← SOUTH

NORTH →

Washington Square Village 3 & 4
(including) 342 feet / 17 stories

Washington Square Village 3 & 2
(including) 336 feet / 17 stories

Bleecker St.

W. 3rd St.

58

Community Meeting:

PROPOSED HUDSON SQUARE REZONING MEANS BIG CHANGES —

How Will They Affect You?

How Can You Affect What Happens?

Soon Trinity Realty will be filing to change the zoning in Hudson Square, to encourage new large-scale development, while limiting some types of development and uses in the area. Any plan must be heard and voted on by the Community Board, Borough President, City Planning Commission, and City Council. The plan will affect the look and feel of our neighborhood. We all want the best for our community. Find out what's being considered, what the changes mean, and how you can make your voice heard.



(l.) Proposed Hudson Square rezoning area; (r.) Trump SoHo

**Tuesday, March 27th at 6:30 P.M.
SoHo Playhouse
15 Vandam Street (west of 6th Ave.)**

Sponsored by: The Greenwich Village Society for Historic Preservation, the Charlton Street Block Association, the Vandam Street Block Association, the SoHo Alliance, the Greenwich Village Community Task Force, and Greenwich Village Block Associations



Home : [Preservation](#) : [Landmarks Applications](#)

Landmarks Applications Webpage

A running record of applications to the NYC Landmarks Preservation Commission (LPC) for work on landmarked properties in Greenwich Village, NoHo, Gansevoort Market, the South Village, and the East Village that require a public hearing.

Upcoming Applications

The upcoming applications listed below are scheduled to be heard in the near future at the Community Board, the LPC, or both. Click on each for more information.



7 Cornelia Street

CB2 hearing:
06/13/2011 LPC
hearing: 06/21/2011...



1 Jane Street

CB2 hearing:
06/13/2011 LPC
hearing: 06/21/2011...



2-6 West 4th Street

CB2 hearing:
06/13/2011 LPC
hearing: 06/21/2011...



13-15 Sheridan Square

CB2 hearing:
06/13/2011 LPC
hearing: 06/21/2011...



45 Barrow Street

CB2 hearing:
06/13/2011 LPC
hearing: 06/21/2011...



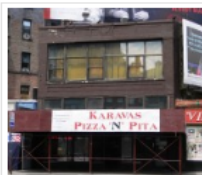
30 Charlton Street

CB2 hearing:
06/13/2011 LPC
hearing: 06/21/2011...



137-141 Seventh Avenue South

CB2 hearing:
06/13/2011 LPC
hearing: 06/21/2011...



108 Seventh Avenue South

CB2 hearing:
06/13/2011 LPC
hearing: 06/21/2011...



21-33 Seventh Avenue

LPC hearing:
06/14/2011 CB2
hearing: 05/31/2011...

Search Applications by Address

Enter address here...

To receive status updates via email about a particular application [click here](#).

Upcoming Applications

Pending Landmarks Applications



Closed Landmarks Applications



Contact LPC or Community Board



Landmarks Applications Website FAQ



Subscribe



Browse by Application Category

Select Category

