



**büro**

Büro Koray Duman

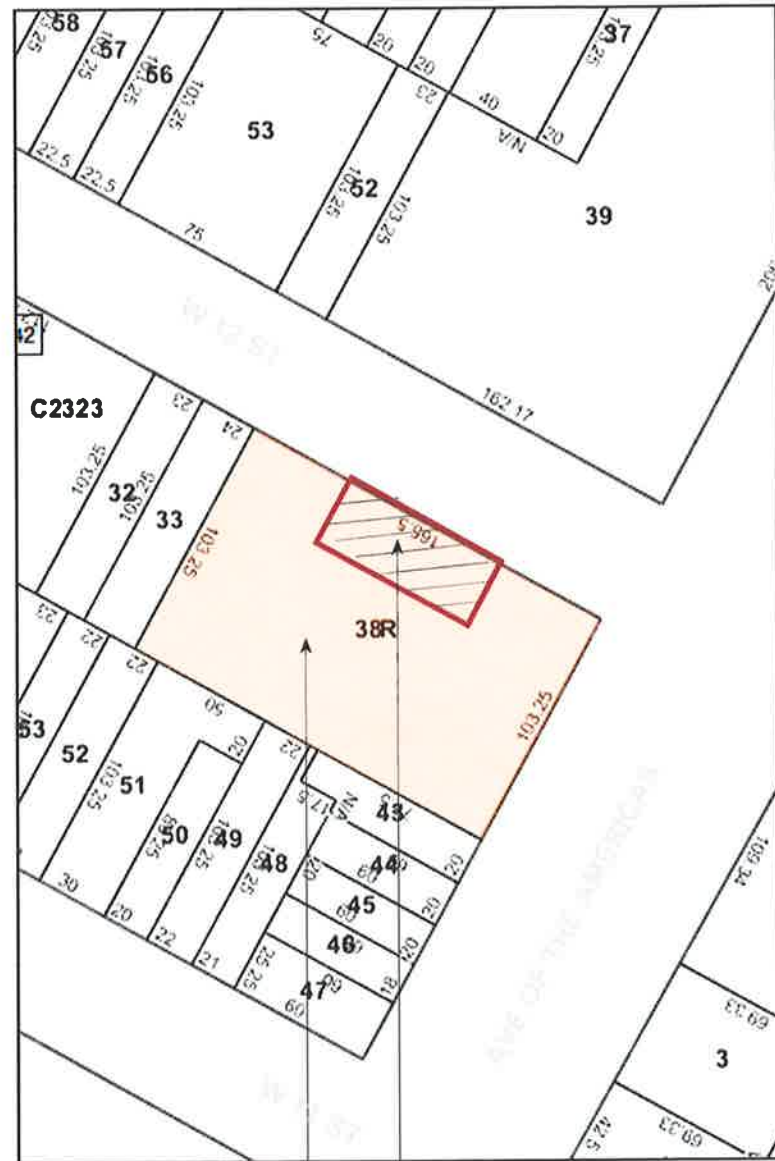
**MARK TWAIN  
LOBBY & HALLWAY**

LANDMARK REVIEW

02-11-16



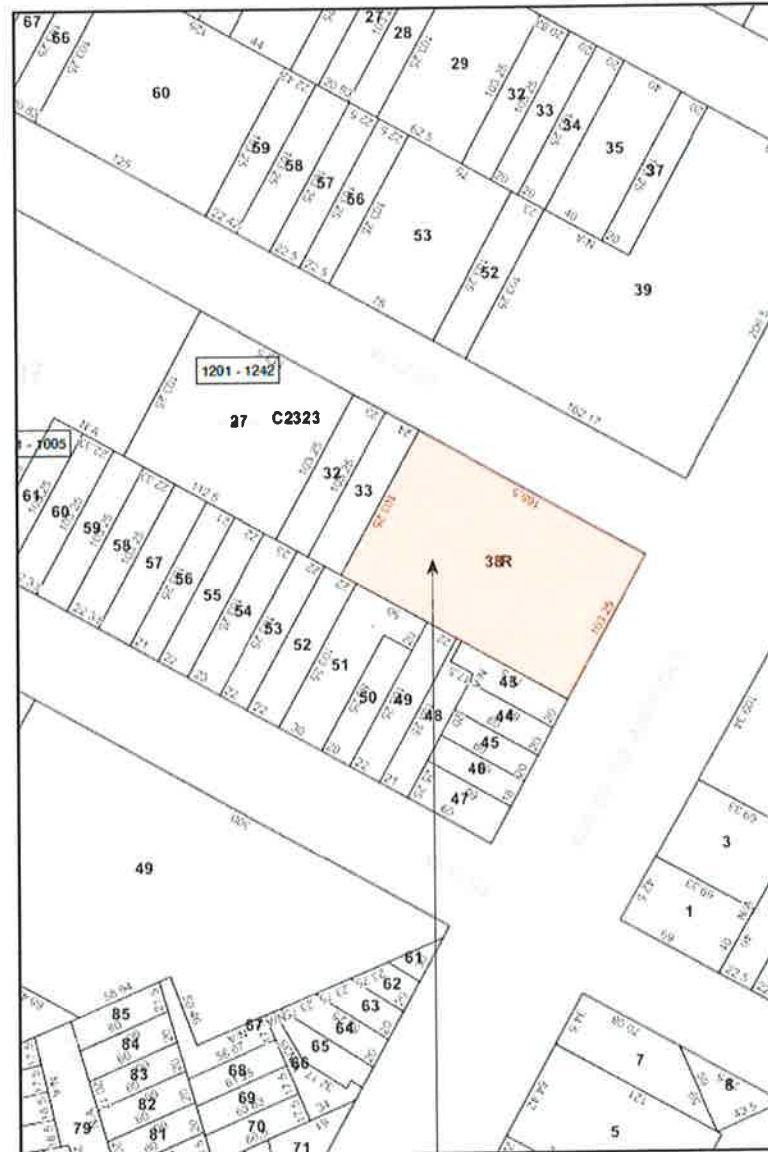
SITE MAP



AREA OF WORK

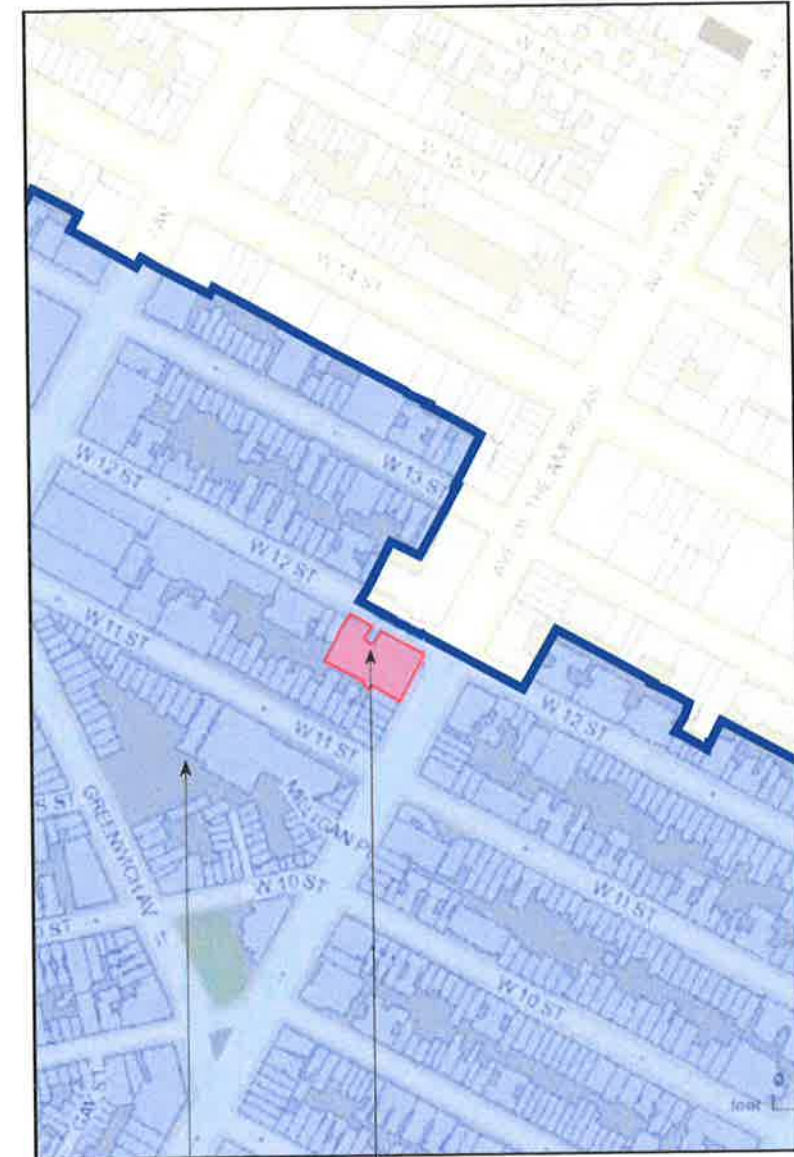
100 WEST 12TH STREET  
NY, NY 10011

LOCATION MAP



100 WEST 12TH STREET  
NY, NY 10011

DISTRICT MAP



100 WEST 12TH STREET  
NY, NY 10011

GREENWICH VILLAGE  
HISTORIC DISTRICT



NOTE: NO TAX PHOTO AVAILABLE OF W 12TH STREET FACADCE



PROPOSED RENDERING - AREA OF WORK



CURRENT PHOTO - AREA OF WORK



PROPOSED RENDERING - FULL FAÇADE



CURRENT PHOTO - FULL FAÇADE



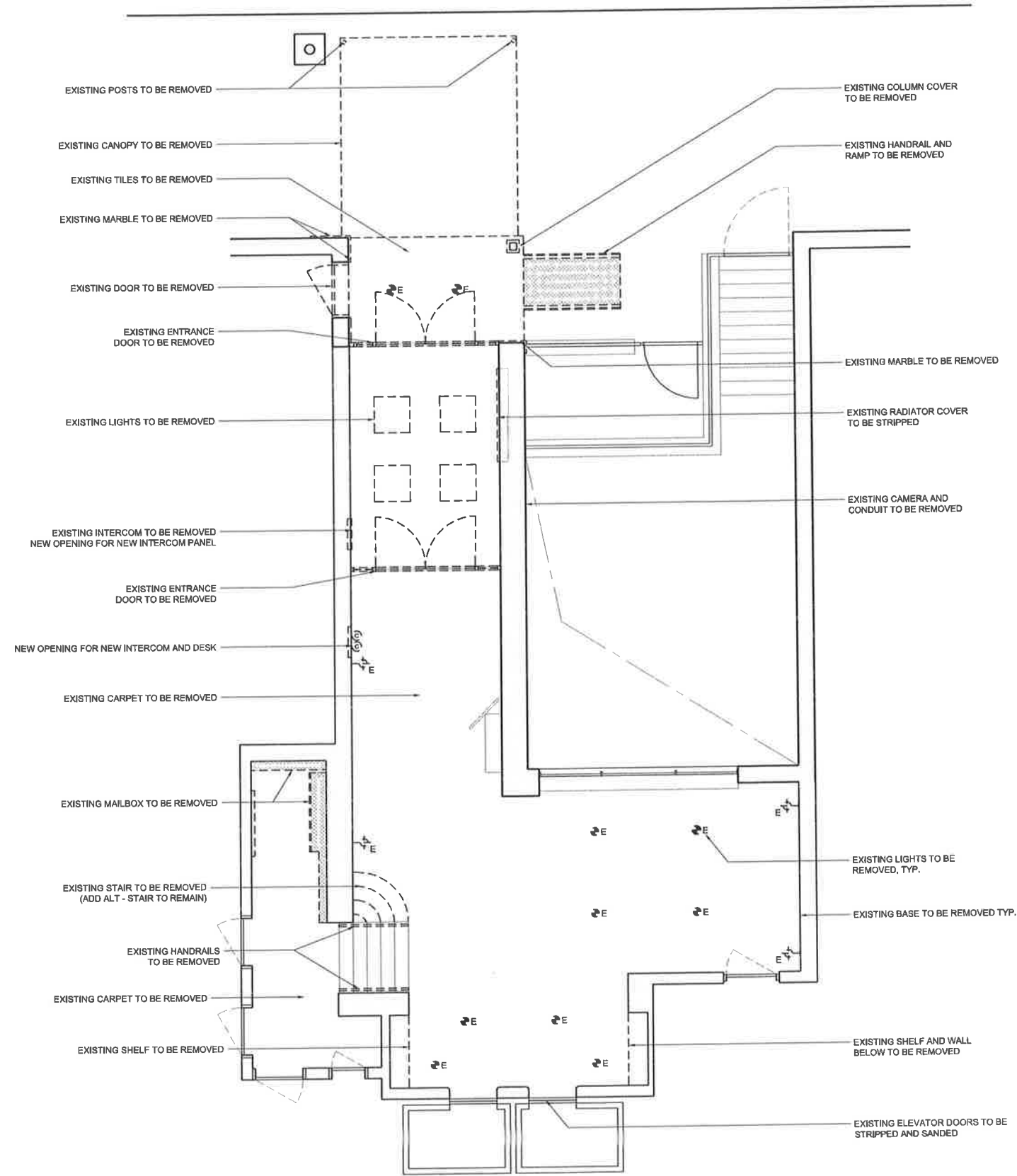
BUILDING ACROSS STREET



LEFT FAÇADE

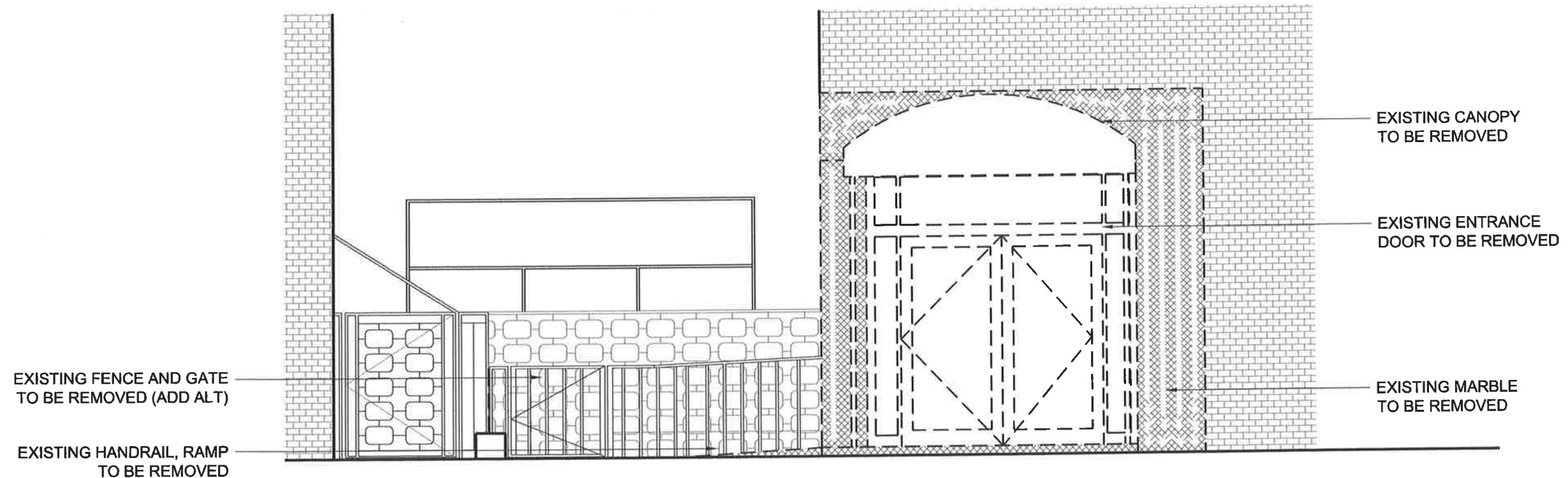


RIGHT FAÇADE



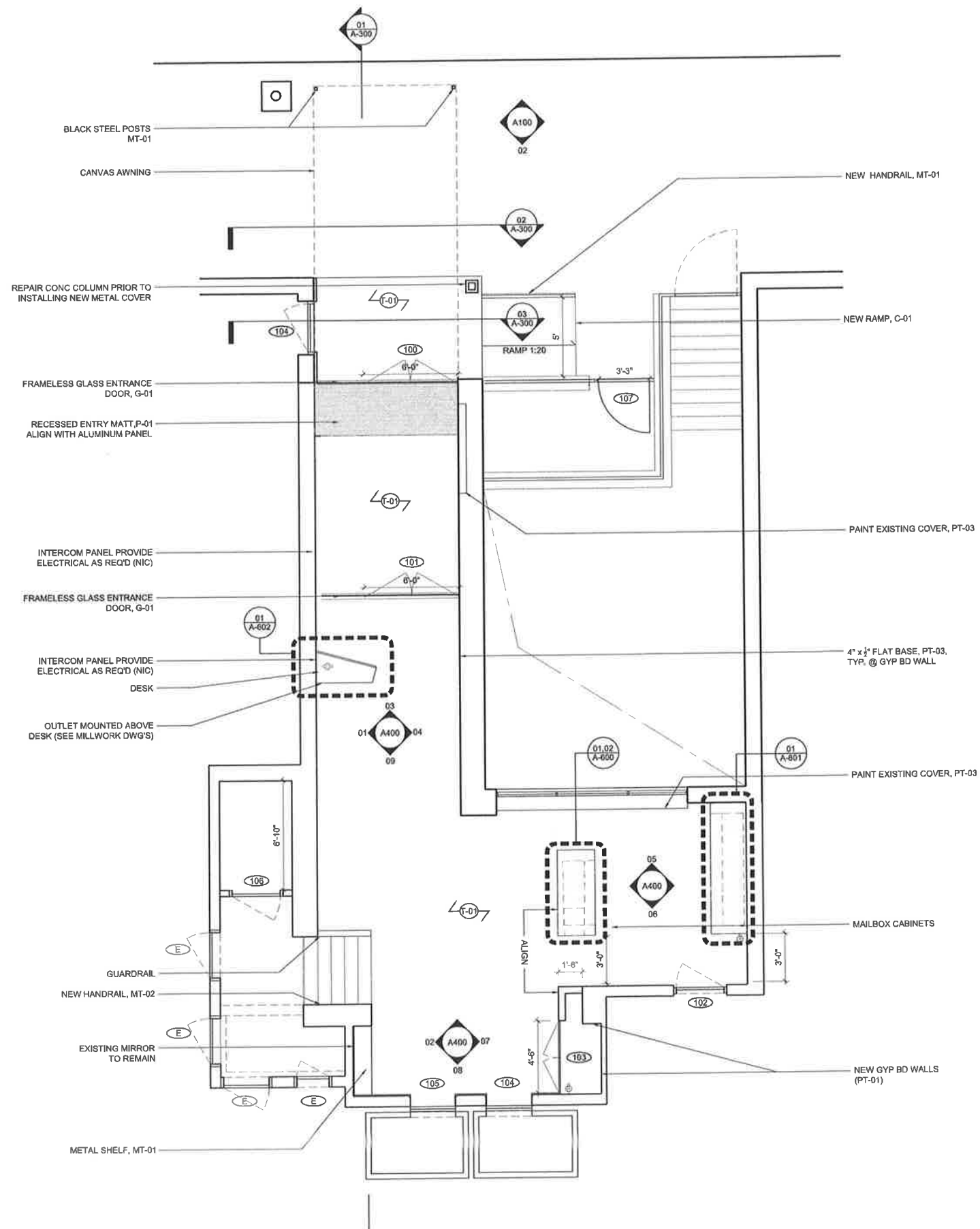
**MATERIAL LEGEND**

- WD 01: BIRCH PLY WD, CLEAR MATTE FINISH
- C 01: BROOM FINISH CONCRETE
- T 01: BLACK PORCELAIN TILES
- T 02: BLACK GROUT
- MT 01: BLACKENED STEEL
- MT 02: ALUMINUM COMPOSITE MATERIAL
- MT 03: ANODIZED ALUMINUM, CLEAR MATTE FINISH
- MT 04: STAINLESS STEEL, SATIN FINISH
- MT 05: STRIPPED AND SANDED METAL
- MT 06: WHITE POWDER COATED METAL
- MT 07: BLACK POWDER COATED METAL
- PT 01: WHITE PAINT, EGGSHELL FINISH
- PT 02: WHITE PAINT, FLAT FINISH
- PT 03: GRAY PAINT, EGGSHELL FINISH
- PT 04: NEUTRAL PAINT, EGGSHELL FINISH  
COLOR TBD.
- PT 05: BLACK PAINT
- P 01: BLACK VINYL ENTRY MATT
- P 02: WHITE ACRYLIC
- P 03: WHITE VINYL
- G 01: 1/2" TEMPERED GLASS
- CP 01: GRAY CARPET



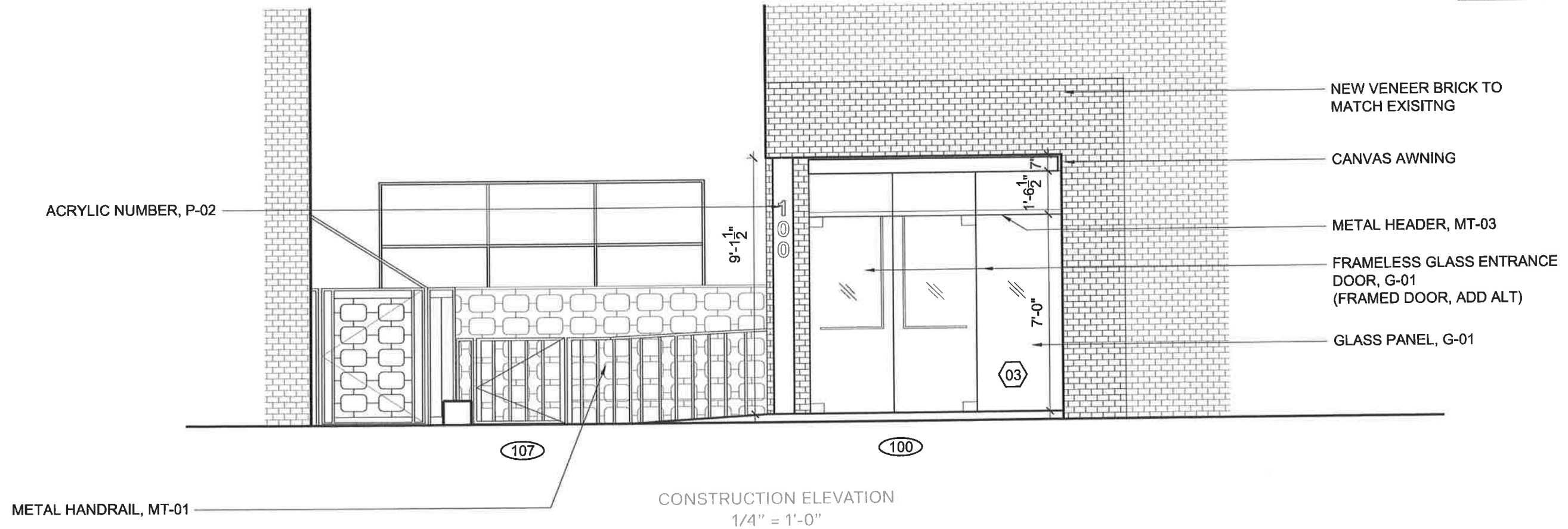
DEMOLITION ELEVATION  
1/4" = 1'-0"

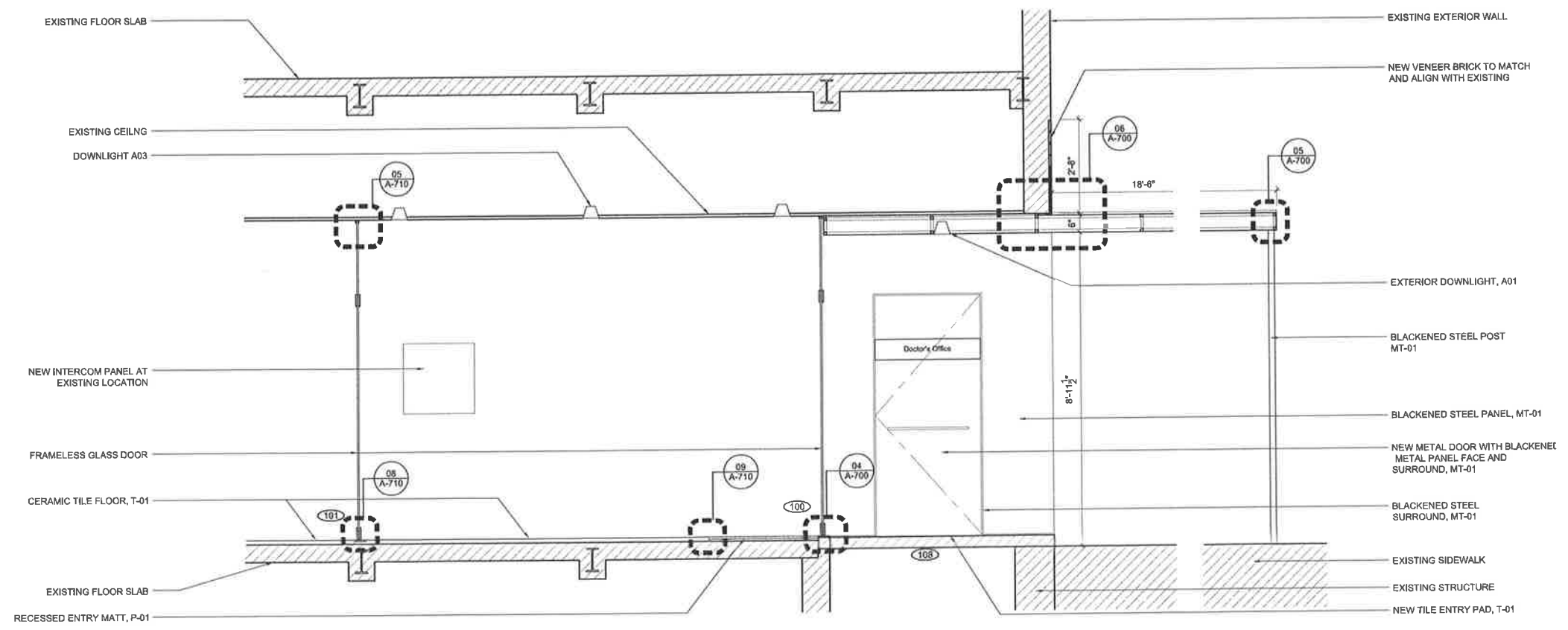
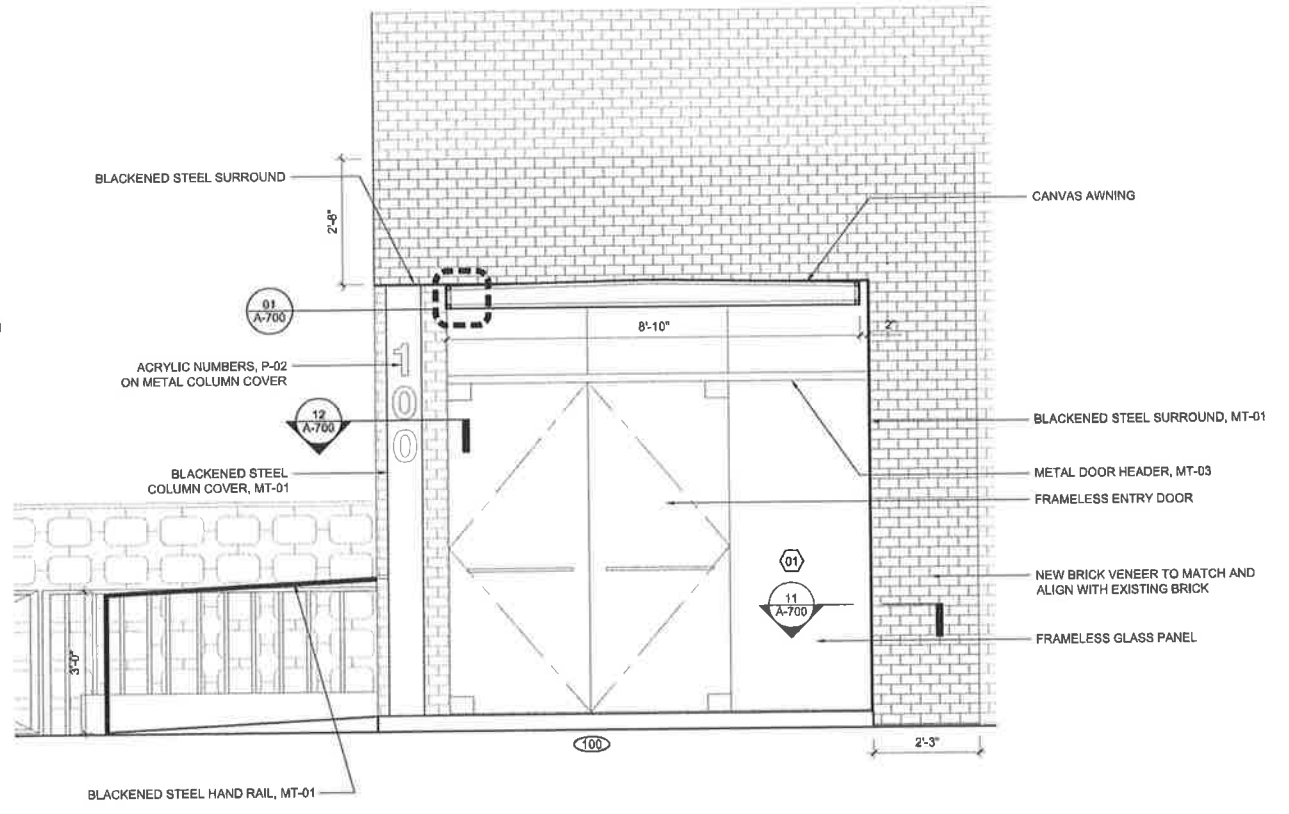
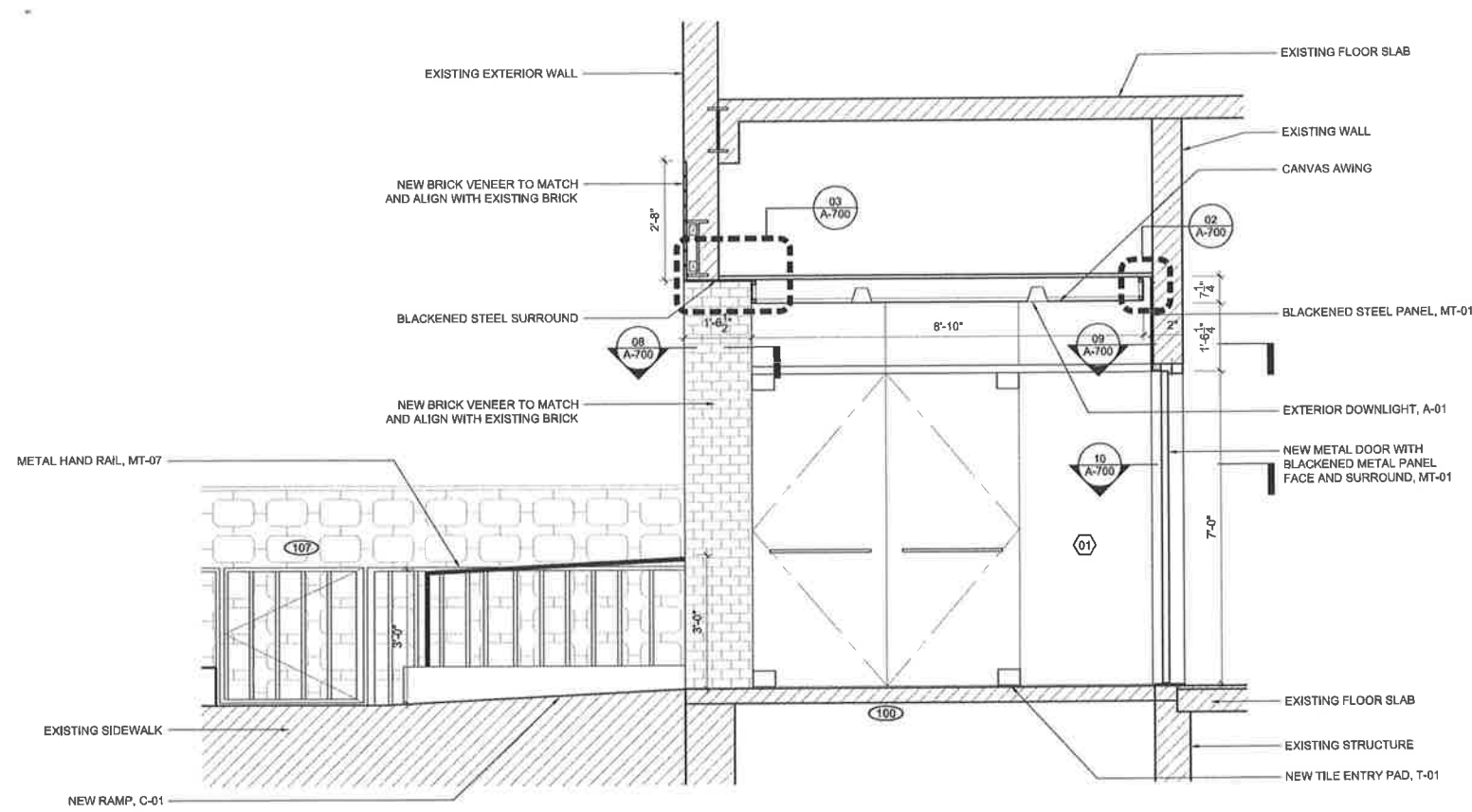


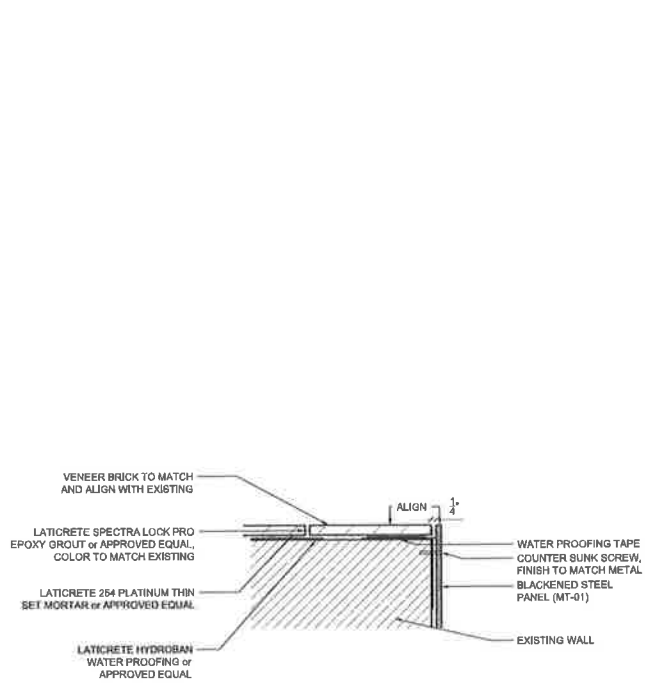


**MATERIAL LEGEND:**

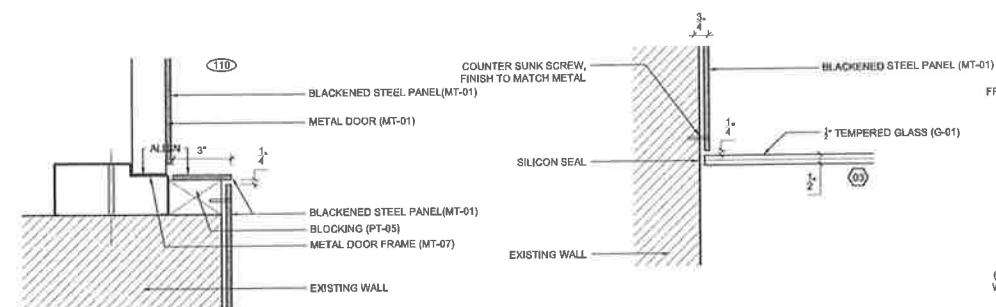
- WD 01: BIRCH PLY WD, CLEAR MATTE FINISH
- C 01: BROOM FINISH CONCRETE
- T 01: BLACK PORCELAIN TILES
- T 02: BLACK GROUT
- MT 01: BLACKENED STEEL
- MT 02: ALUMINUM COMPOSITE MATERIAL
- MT 03: ANODIZED ALUMINUM, CLEAR MATTE FINISH
- MT 04: STAINLESS STEEL, SATIN FINISH
- MT 05: STRIPPED AND SANDED METAL
- MT 06: WHITE POWDER COATED METAL
- MT 07: BLACK POWDER COATED METAL
- PT 01: WHITE PAINT, EGGSHELL FINISH
- PT 02: WHITE PAINT, FLAT FINISH
- PT 03: GRAY PAINT, EGGSHELL FINISH
- PT 04: NEUTRAL PAINT, EGGSHELL FINISH  
COLOR TBD.
- PT 05: BLACK PAINT
- P 01: BLACK VINYL ENTRY MAT
- P 02: WHITE ACRYLIC
- P 03: WHITE VINYL
- G 01: 1/2" TEMPERED GLASS
- CP 01: GRAY CARPET



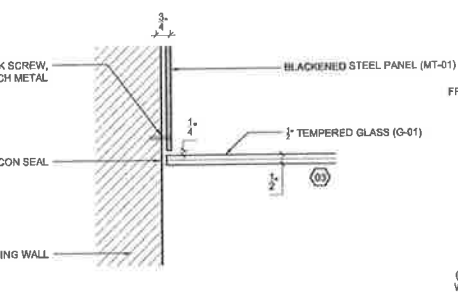




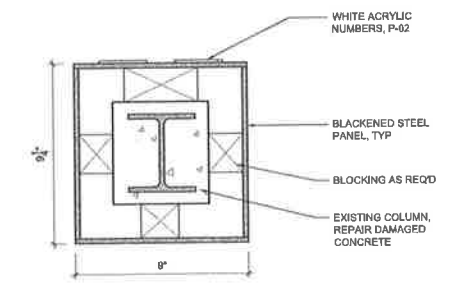
11 BLACKENED STEEL PANEL DETAIL  
SCALE: 3/4" = 1'-0"



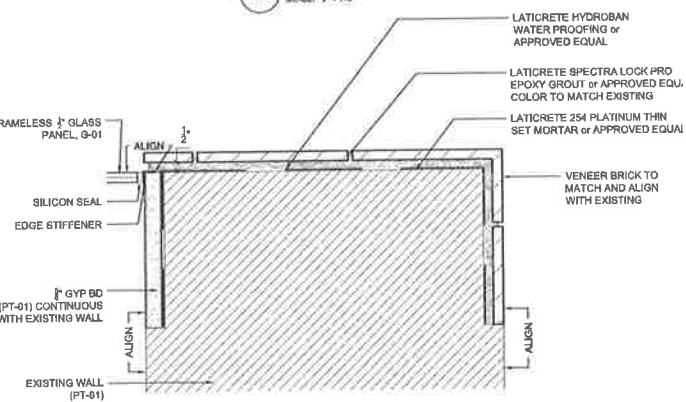
10 BLACKENED STEEL PANEL DETAIL  
SCALE: 3/4" = 1'-0"



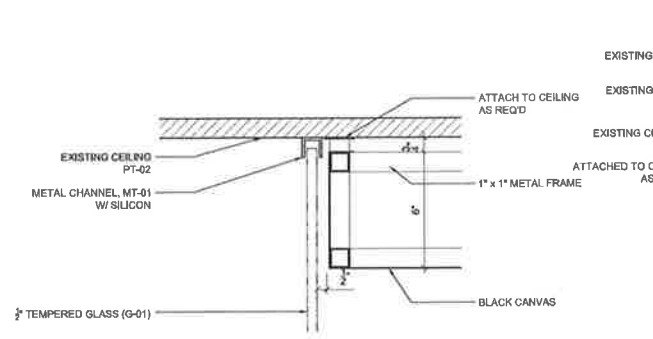
09 ENTRY DOOR DETAIL  
SCALE: 3/4" = 1'-0"



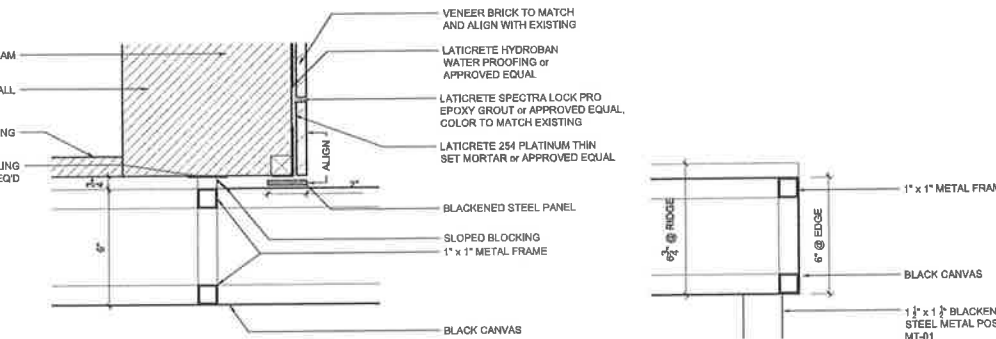
12 COLUMN DETAIL  
SCALE: 3/4" = 1'-0"



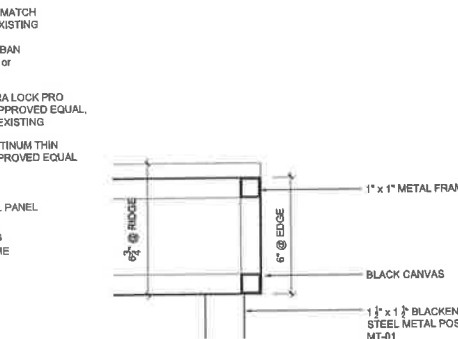
08 ENTRY DOOR DETAIL  
SCALE: 3/4" = 1'-0"



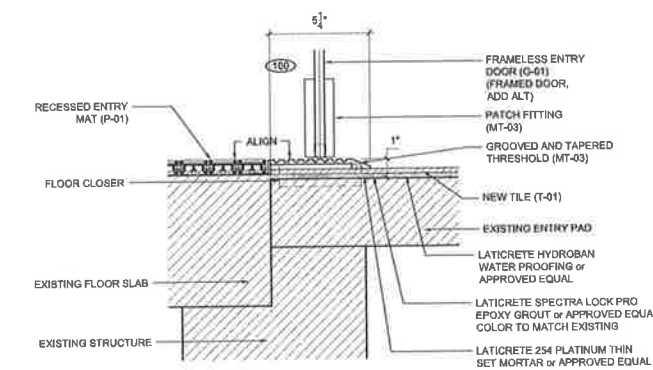
07 ENTRY DOOR DETAIL (ADD ALT)  
SCALE: 3/4" = 1'-0"



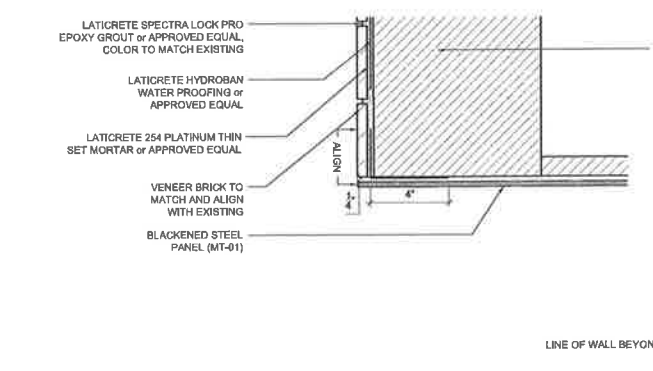
06 CANOPY DETAIL @ EXTERIOR WALL  
SCALE: 3/4" = 1'-0"



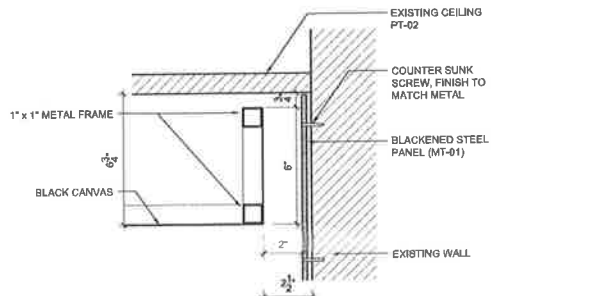
05 CANOPY FRONT EDGE DETAIL  
SCALE: 3/4" = 1'-0"



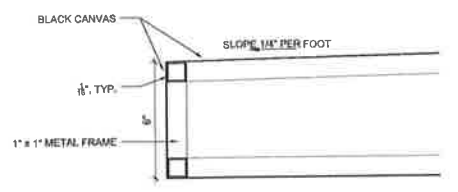
04 ENTRY DOOR DETAIL  
SCALE: 3/4" = 1'-0"



03 CANOPY EDGE DETAIL @ SOFFIT  
SCALE: 3/4" = 1'-0"



02 CANOPY INSIDE EDGE DETAIL  
SCALE: 3/4" = 1'-0"



01 CANOPY SIDE EDGE DETAIL  
SCALE: 3/4" = 1'-0"

**MATERIAL LEGEND:**

- WD 01: BIRCH PLY WD, CLEAR MATTE FINISH
- C 01: BROOM FINISH CONCRETE
- T 01: BLACK PORCELAIN TILES
- T 02: BLACK GROUT
- MT 01: BLACKENED STEEL
- MT 02: ALUMINUM COMPOSITE MATERIAL
- MT 03: ANODIZED ALUMINUM, CLEAR MATTE FINISH
- MT 04: STAINLESS STEEL, SATIN FINISH
- MT 06: STRIPPED AND SANDED METAL
- MT 08: WHITE POWDER COATED METAL
- MT 07: BLACK POWDER COATED METAL
- PT 01: WHITE PAINT, EGGSHELL FINISH
- PT 02: WHITE PAINT, FLAT FINISH
- PT 03: GRAY PAINT, EGGSHELL FINISH
- PT 04: NEUTRAL PAINT, EGGSHELL FINISH COLOR TBD.
- PT 05: BLACK PAINT
- P 01: BLACK VINYL ENTRY MATT
- P 02: WHITE ACRYLIC
- P 03: WHITE VINYL
- G 01: 1/2" TEMPERED GLASS
- CP 01: GRAY CARPET

- 1. PORCELAIN TILE - QSTONE MINIMAL. NIGHT - NATURAL.
- 2. HOT ROLLED BLACKENED STEEL
- 3. BLACK CANVAS
- 4. WHITE ACRYLIC HOUSE NUMBERS
- 5. CRLAWRENCE ACCESS CONTROL HANDLE

