

27 CHRISTOPHER STREET

SEPTEMBER-19-2017

LPC-001

27 CHRISTOPHER STREET
 LOCATION PLAN
 EXISTING PHOTO

H.S. JESSUP ARCHITECTURE
 11 BROADWAY SUITE 660
 NEW YORK, NY 10004
 212-514-8545



1933 NYPL

H.S. JESSUP ARCHITECTURE
11 BROADWAY SUITE 660
NEW YORK, NY 10004
212-514-8545

27 CHRISTOPHER STREET
HISTORIC PHOTOGRAPH

SEPTEMBER - 19 - 2017

LPC-002



Tax Photo 610-41



Tax Photo 610-75

SEPTEMBER - 19 - 2017

LPC-003

27 CHRISTOPHER STREET
HISTORIC PHOTOGRAPHS

H.S. JESSUP ARCHITECTURE
11 BROADWAY SUITE 660
NEW YORK, NY 10004
212-514-8545



Tax Photo (1980) 610-75

SEPTEMBER - 19 - 2017

LPC-004

27 CHRISTOPHER STREET
HISTORIC PHOTOGRAPH

H.S. JESSUP ARCHITECTURE
11 BROADWAY SUITE 660
NEW YORK, NY 10004
212-514-8545

APPROVED WORK LEGEND:

- 1 INSTALL REPLACEMENT WOOD WINDOWS, TRANSOMS, SIDELIGHTS AND FRAMES TO CONFORM TO DIMENSIONS, PROFILES AND EXISTING CONFIGURATION. NO CHANGE TO MASONRY OPENING.
- 2 INSTALL NEW WOOD DOORS & FRAMES AND LIMESTONE TRANSOM. NO CHANGE TO MASONRY OPENING.
- 3 RESTORE EXISTING METAL SECURITY GUARDS.
- 4 RESTORE BALUSTERS TO MATCH EXISTING STONE BELOW SECOND FLOOR WINDOWS AS PER HISTORIC PHOTO
- 5 RESTORE FLAGPOLE AS PER HISTORIC PHOTO
- 6 RESTORE GRANITE STEPS AS PER HISTORIC PHOTO

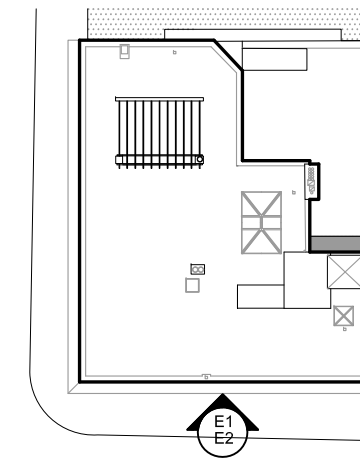


NOTE: POWERWASH ENTIRE BUILDING WITH 500 PSI OR LESS

E1 APPROVED STREET ELEVATION
LOOKING NORTH

PROPOSED WORK LEGEND:

- 1 REPLACING BLUESTONE IN-KIND
- 2 REBUILDING COPPER CORNICE IN-KIND
- 3 REBUILDING BRICK PARAPET WITH BLUESTONE CAP
- 4 NEW TRANSOM WITH LANTERN AT CHRISTOPHER STREET ENTRANCE



KEY PLAN



NOTE: POWERWASH ENTIRE BUILDING WITH 500 PSI OR LESS

E2 PROPOSED STREET ELEVATION
LOOKING NORTH

SEPTEMBER-19-2017

LPC-005

27 CHRISTOPHER STREET
APPROVED AND PROPOSED STREET ELEVATION; SOUTH

H.S. JESSUP ARCHITECTURE
11 BROADWAY SUITE 660
NEW YORK, NY 10004
212-514-8545

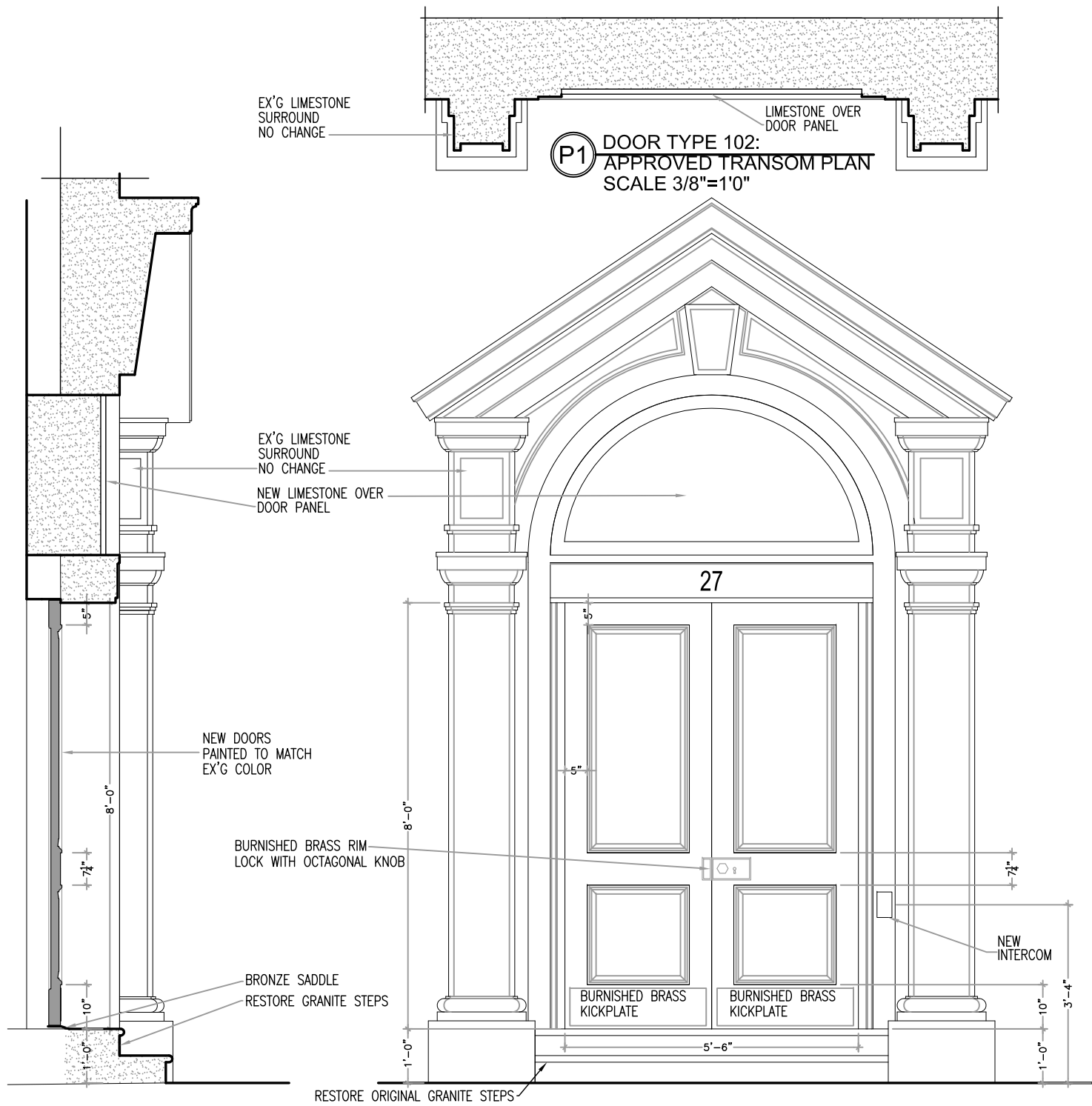


CHRISTOPHER STREET ENTRANCE

EXISTING TRANSOM

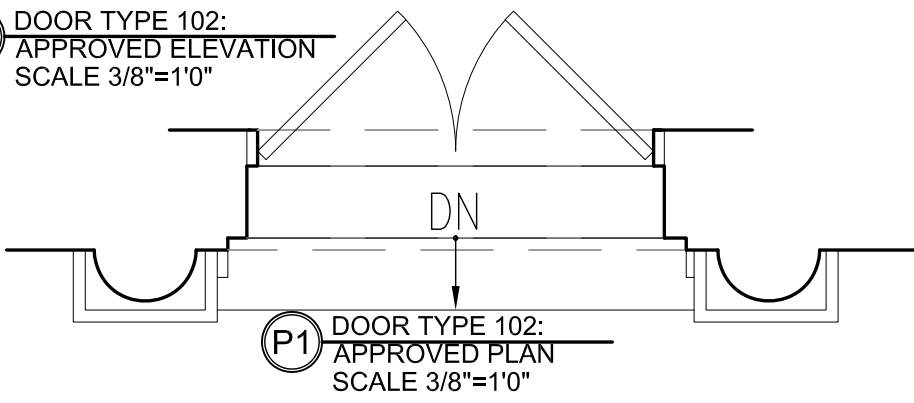


CHRISTOPHER STREET ENTRANCE

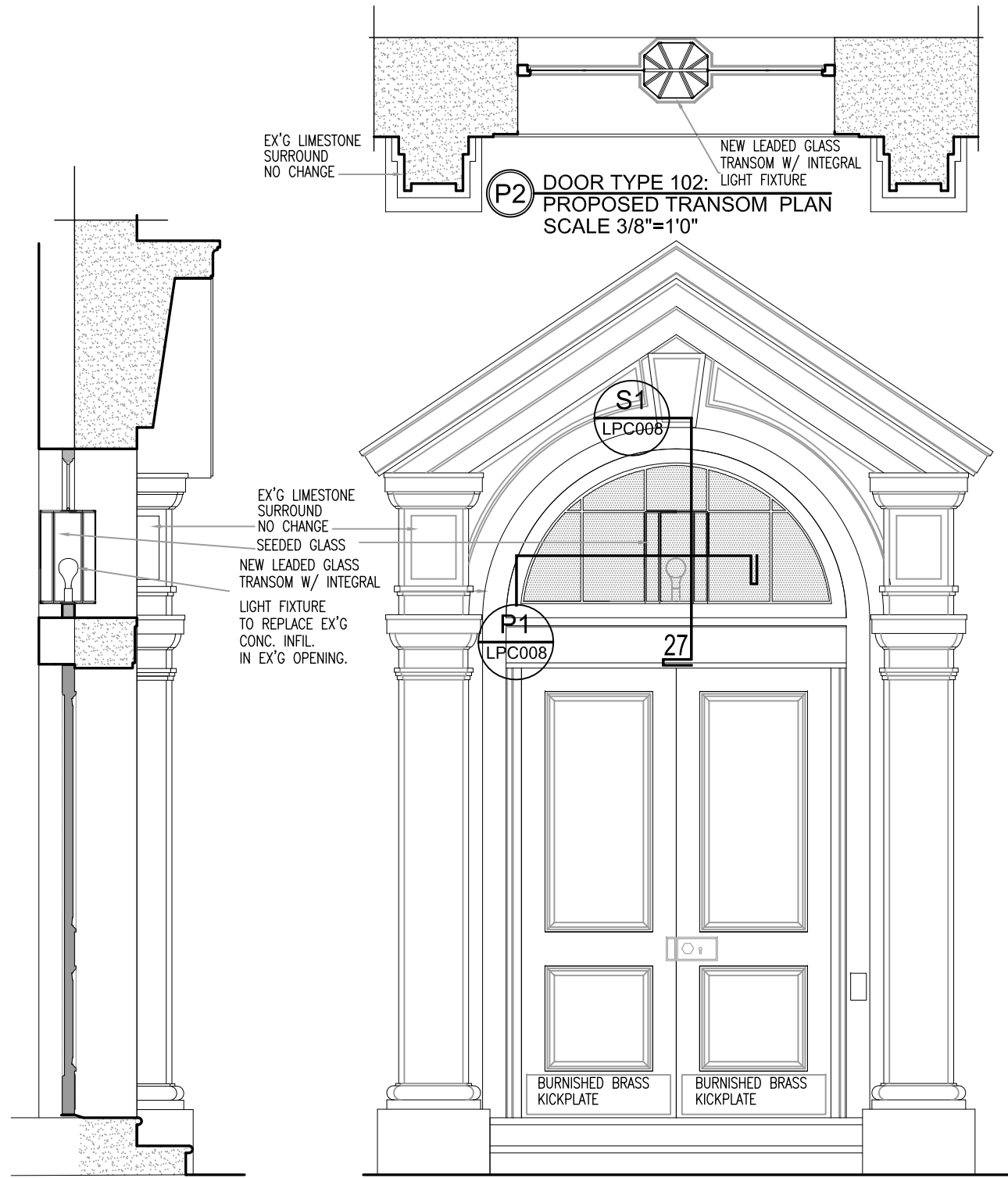


S1 DOOR TYPE 102:
APPROVED VERTICAL SECTION
SCALE 3/8"=1'0"

E1 DOOR TYPE 102:
APPROVED ELEVATION
SCALE 3/8"=1'0"

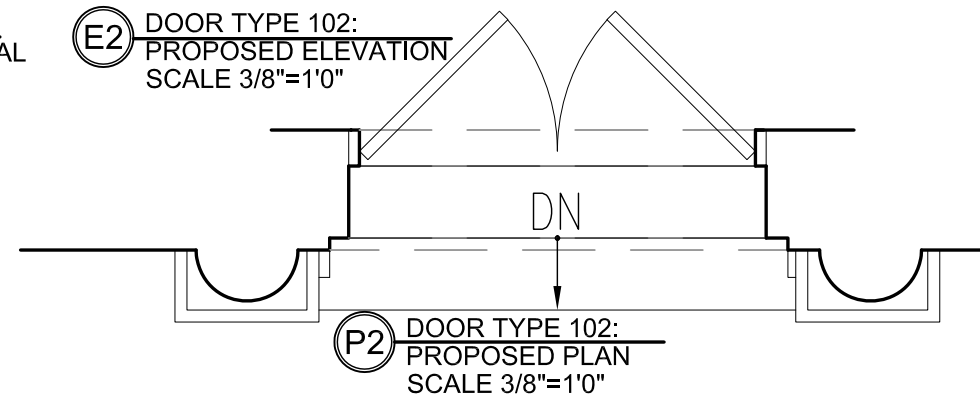


P1 DOOR TYPE 102:
APPROVED PLAN
SCALE 3/8"=1'0"



S2 DOOR TYPE 102:
PROPOSED VERTICAL SECTION
SCALE 3/8"=1'0"

E2 DOOR TYPE 102:
PROPOSED ELEVATION
SCALE 3/8"=1'0"



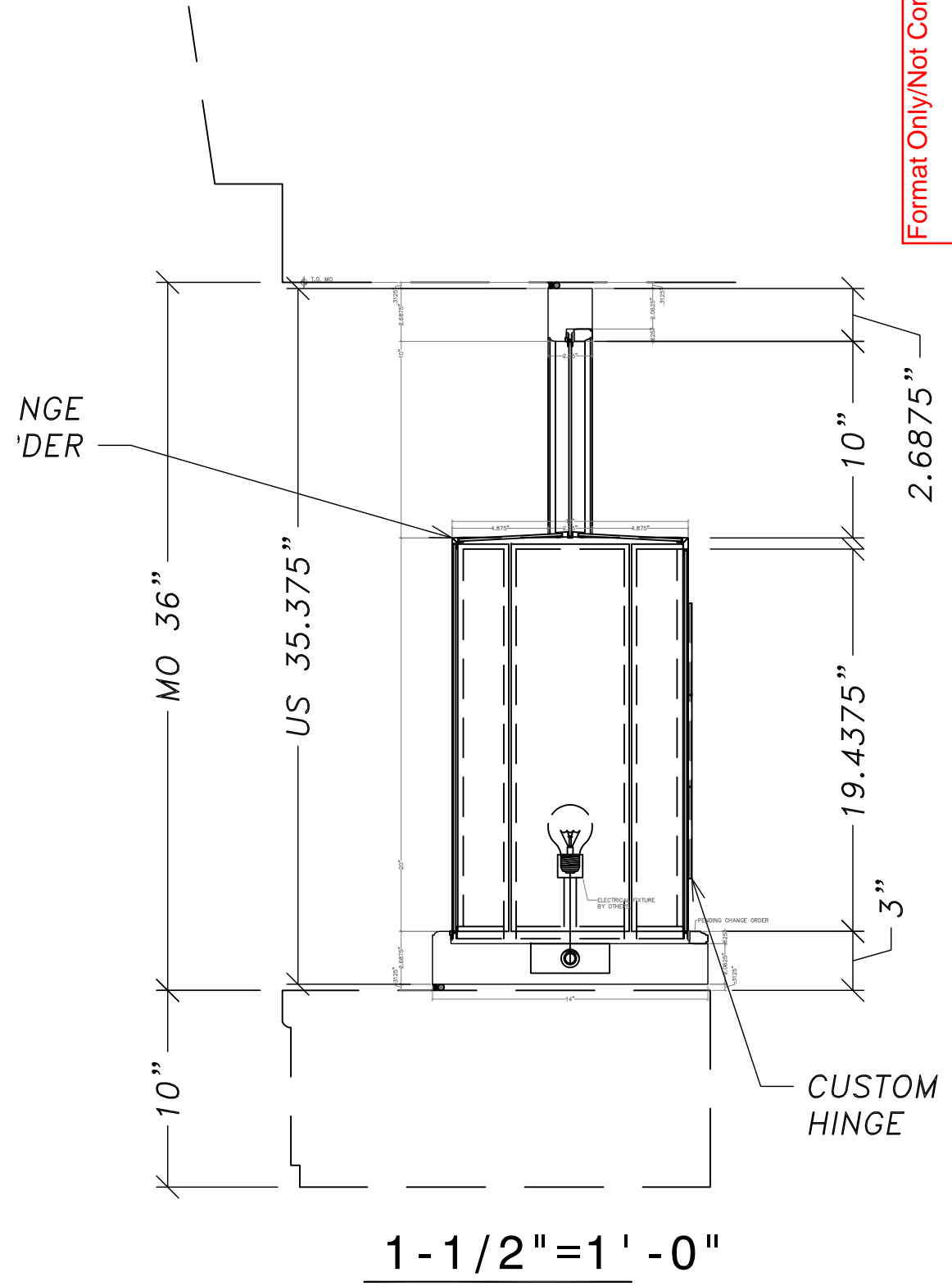
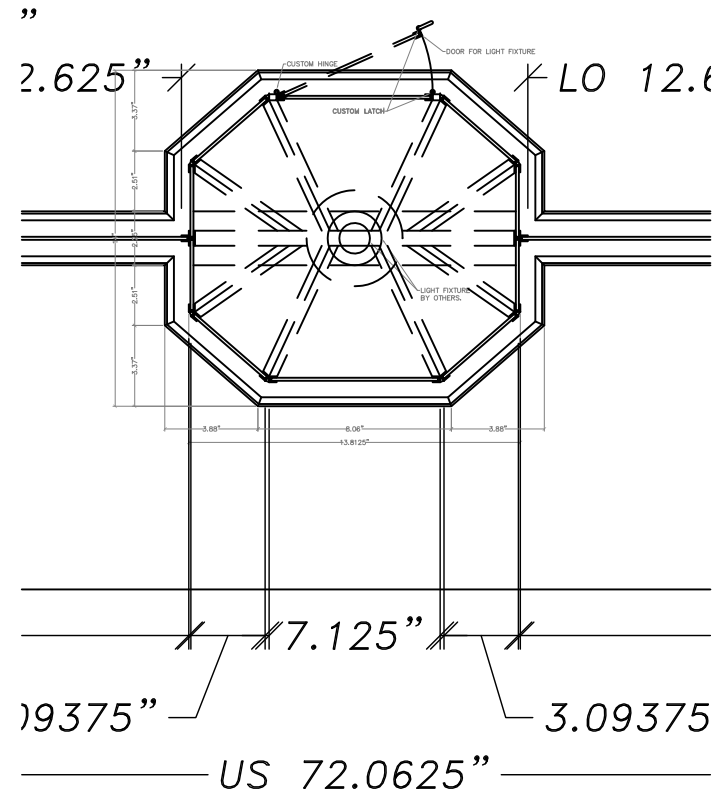
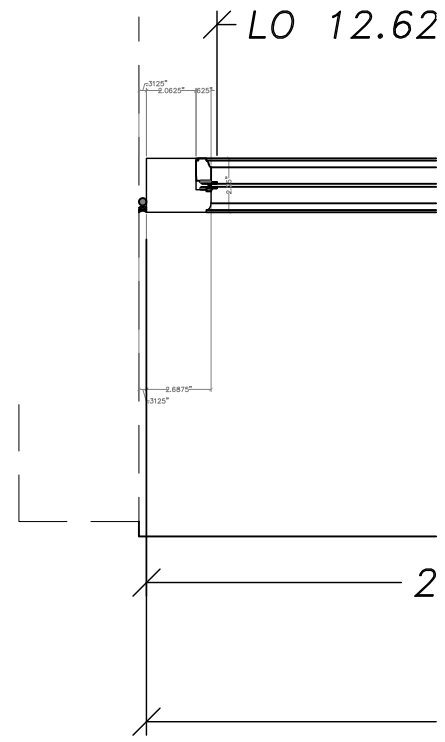
P2 DOOR TYPE 102:
PROPOSED PLAN
SCALE 3/8"=1'0"

SEPTEMBER - 19 - 2017

LPC-007

27 CHRISTOPHER STREET
APPROVED AND PROPOSED FRONT DOOR #102 GLASS TRANSOM WITH
LIGHT FIXTURE
PLAN; SECTION; ELEVATION

H.S. JESSUP ARCHITECTURE
11 BROADWAY SUITE 660
NEW YORK, NY 10004
212-514-8545



Format Only/Not Complete

H.S. JESSUP ARCHITECTURE
 11 BROADWAY SUITE 660
 NEW YORK, NY 10004
 212-514-8545

27 CHRISTOPHER STREET
 SOFFIT PANEL TREATMENT
 DETAILS

SEPTEMBER-19-2017

LPC-008



H.S. JESSUP ARCHITECTURE
11 BROADWAY SUITE 660
NEW YORK, NY 10004
212-514-8545

27 CHRISTOPHER STREET
GLASS TRANSON PRECEDENTS

SEPTEMBER - 19 - 2017

LPC-009