

il Pittino Storefront – 270 6th Ave.



FSI ARCHITECTURE PC

PROJECT NAME: IL PITTINO - 270 6th AVENUE, NEW YORK, NY 10014
RE: CB2/LPC PRESENTATION

PROJECT NO: 505302.1
RE: APRIL 14TH, 2016

IL PITTINO STOREFRONT

Existing Conditions

il Pittino Storefront – 270 6th Ave.

Existing Conditions



FSI ARCHITECTURE PC

PROJECT NAME: IL PITTINO - 270 6th AVENUE, NEW YORK, NY 10014
RE: CB2/LPC PRESENTATION

PROJECT NO: 505302.1
RE: APRIL 14TH, 2016

il Pittino Storefront – 270 6th Ave.

Existing Conditions



FSI ARCHITECTURE PC

PROJECT NAME: IL PITTINO - 270 6th AVENUE, NEW YORK, NY 10014
RE: CB2/LPC PRESENTATION

PROJECT NO: 505302.1
RE: APRIL 14TH, 2016

il Pittino Storefront – 270 6th Ave.

Existing Conditions



FSI ARCHITECTURE PC

PROJECT NAME: IL PITTINO - 270 6th AVENUE, NEW YORK, NY 10014
RE: CB2/LPC PRESENTATION

PROJECT NO:
RE:

505302.1
APRIL 14TH, 2016

il Pittino Storefront – 270 6th Ave.

Existing Conditions – Historic



FSI ARCHITECTURE PC

PROJECT NAME: IL PITTINO - 270 6th AVENUE, NEW YORK, NY 10014
RE: CB2/LPC PRESENTATION

PROJECT NO:
RE:

505302.1
APRIL 14TH, 2016

il Pittino Storefront – 270 6th Ave.

Existing Conditions – Historic



FSI ARCHITECTURE PC

PROJECT NAME: IL PITTINO - 270 6th AVENUE, NEW YORK, NY 10014
RE: CB2/LPC PRESENTATION

PROJECT NO:
RE:

505302.1
APRIL 14TH, 2016

il Pittino Storefront – 270 6th Ave.

Existing Conditions – Historic



FSI ARCHITECTURE PC

PROJECT NAME: IL PITTINO - 270 6th AVENUE, NEW YORK, NY 10014
RE: CB2/LPC PRESENTATION

PROJECT NO:
RE:

505302.1
APRIL 14TH, 2016

IL PITTINO STOREFRONT

Adjacent Storefronts

il Pittino Storefront – 270 6th Ave.

Adjacent Storefront – Bar Pitti



FSI ARCHITECTURE PC

PROJECT NAME: IL PITTINO - 270 6th AVENUE, NEW YORK, NY 10014
RE: CB2/LPC PRESENTATION

PROJECT NO:
RE:

505302.1
APRIL 14TH, 2016

il Pittino Storefront – 270 6th Ave.

Adjacent Storefront – Bar Pitti



il Pittino Storefront – 270 6th Ave.

Adjacent Storefront – Bar Pitti



il Pittino Storefront – 270 6th Ave.

Adjacent Storefronts – Da Silvano



FSI ARCHITECTURE PC

PROJECT NAME: IL PITTINO - 270 6th AVENUE, NEW YORK, NY 10014
RE: CB2/LPC PRESENTATION

PROJECT NO:
RE:

505302.1
APRIL 14TH, 2016

il Pittino Storefront – 270 6th Ave.

Adjacent Storefront – Da Silvano



FSI ARCHITECTURE PC

PROJECT NAME: IL PITTINO - 270 6th AVENUE, NEW YORK, NY 10014
RE: CB2/LPC PRESENTATION

PROJECT NO: 505302.1
RE: APRIL 14TH, 2016

il Pittino Storefront – 270 6th Ave.

Overview of Storefronts along 6th Avenue



A
SMALL
STOREFRONT
(METAL)

B
RESIDENTIAL
ENTRANCE
(METAL)

C
LARGE
STOREFRONT
(WOOD)

B
RESIDENTIAL
ENTRANCE
(METAL)

C
LARGE
STOREFRONT
(WOOD)

B
RESIDENTIAL
ENTRANCE
(METAL)

A
SMALL
STOREFRONT
(WOOD)

il Pittino Storefront – 270 6th Ave.

Adjacent Storefronts - Historic



FSI ARCHITECTURE PC

PROJECT NAME: IL PITTINO - 270 6th AVENUE, NEW YORK, NY 10014
RE: CB2/LPC PRESENTATION

PROJECT NO:
RE:

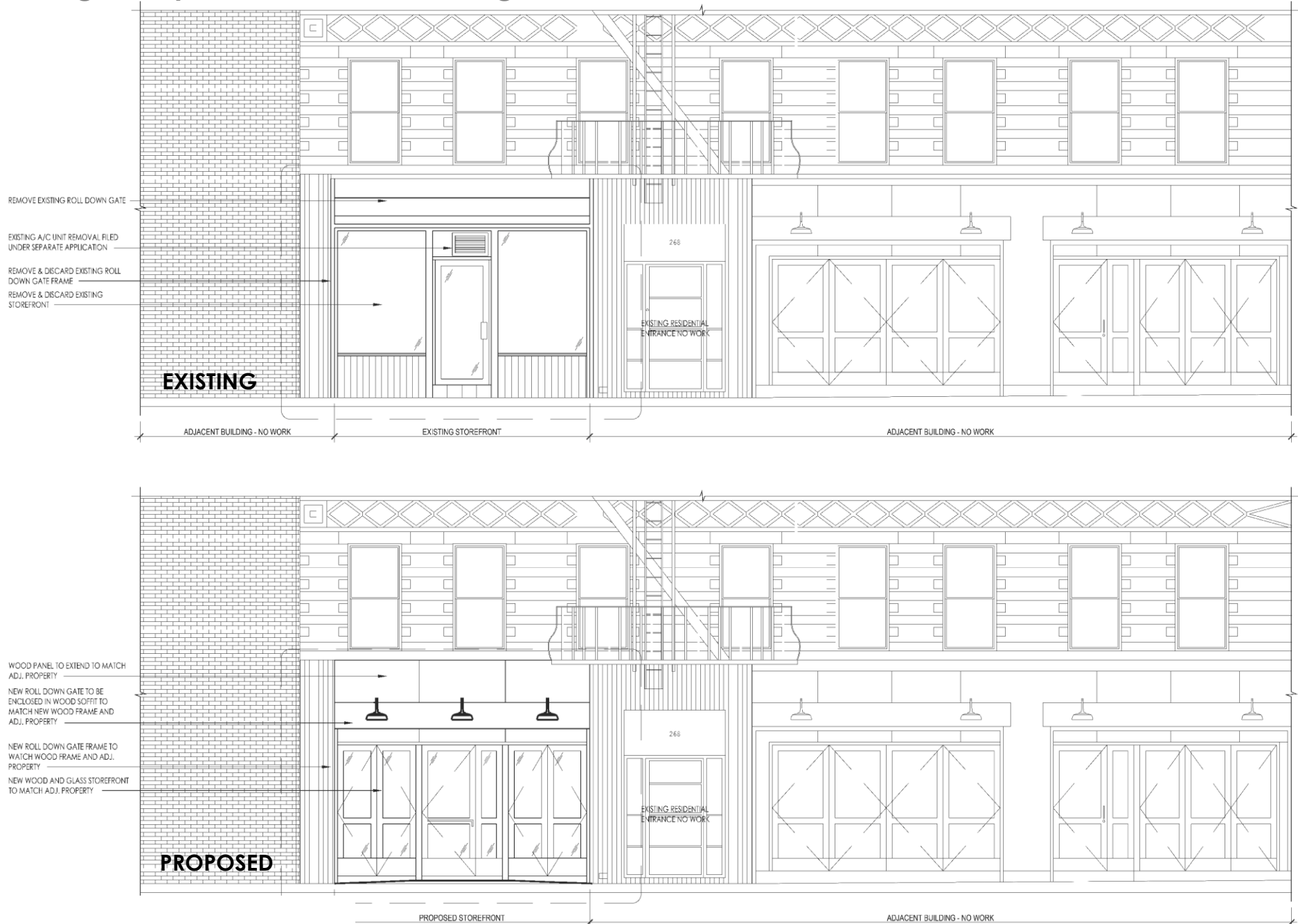
505302.1
APRIL 14TH, 2016

IL PITTINO STOREFRONT

Existing & Proposed

il Pittino Storefront – 270 6th Ave.

Existing + Proposed – without Awning



FSI ARCHITECTURE PC

PROJECT NAME: IL PITTINO - 270 6th AVENUE, NEW YORK, NY 10014
 RE: CB2/LPC PRESENTATION

PROJECT NO: 505302.1
 RE: APRIL 14TH, 2016

il Pittino Storefront – 270 6th Ave.

Existing + Proposed – with Awning



FSI ARCHITECTURE PC

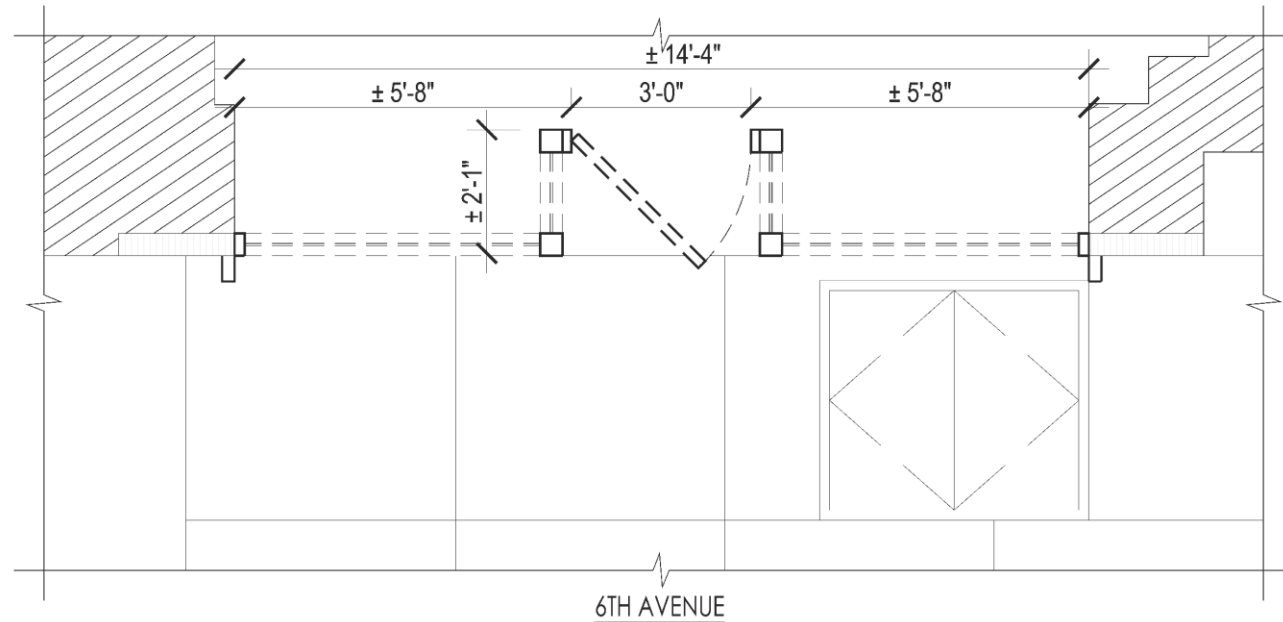
PROJECT NAME: IL PITTINO - 270 6th AVENUE, NEW YORK, NY 10014
RE: CB2/LPC PRESENTATION

PROJECT NO:
RE:

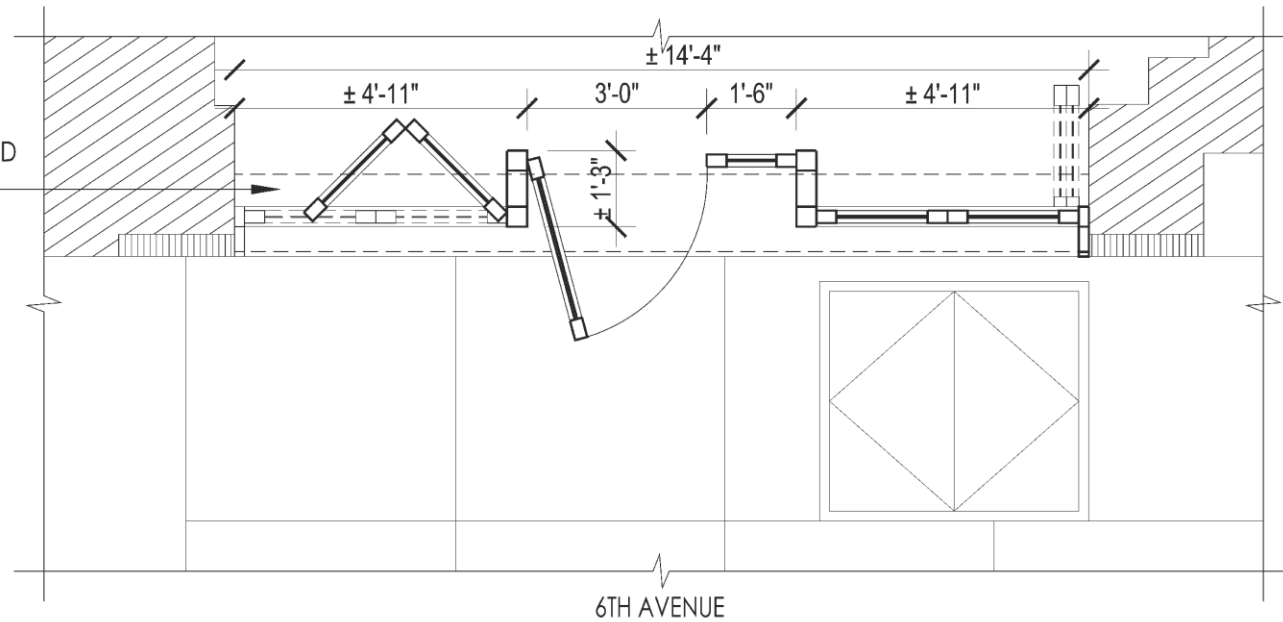
505302.1
APRIL 14TH, 2016

il Pittino Storefront – 270 6th Ave.

Existing + Proposed – Plans

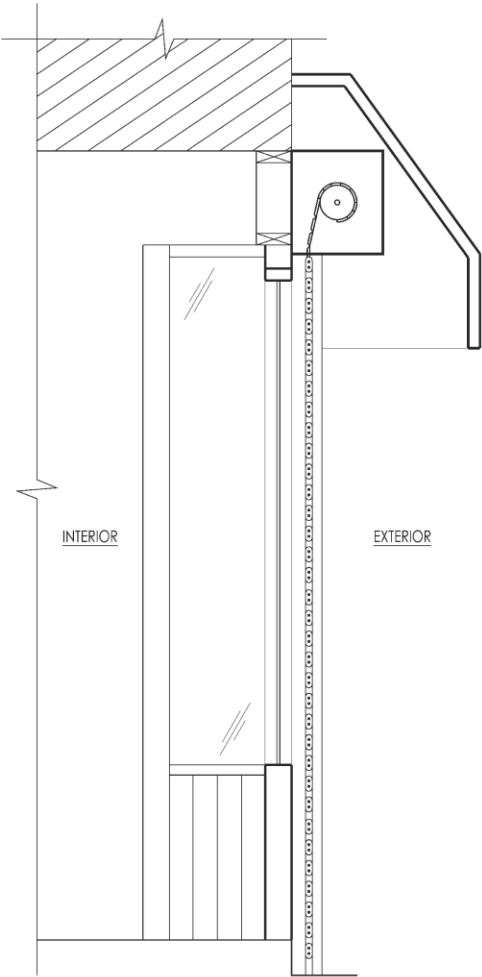


NEW ROLL DOWN GATE TO BE ENCLOSED IN WOOD SOFFIT TO MATCH NEW WOOD FRAME AND ADJ. PROPERTY

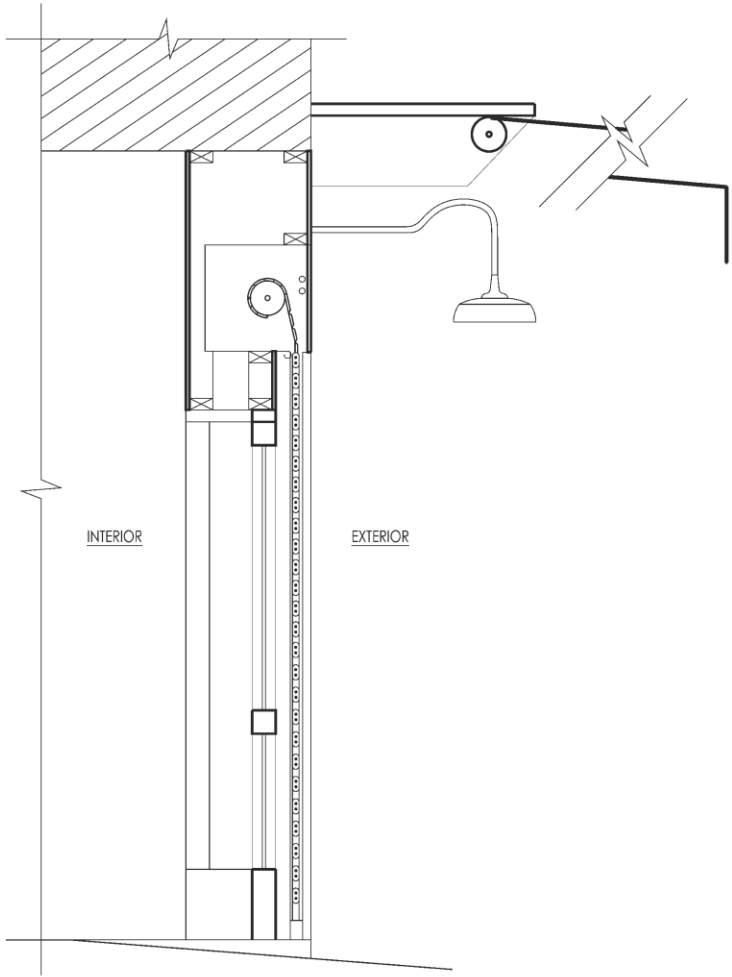


il Pittino Storefront – 270 6th Ave.

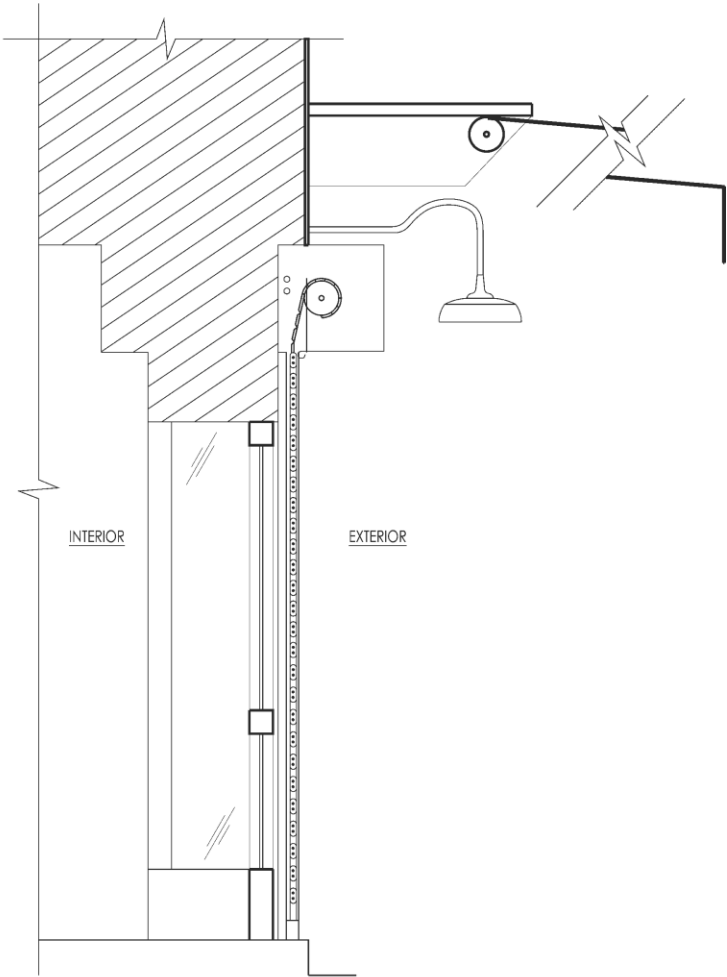
Existing + Proposed – Section



**EXISTING
NAIL SALON**



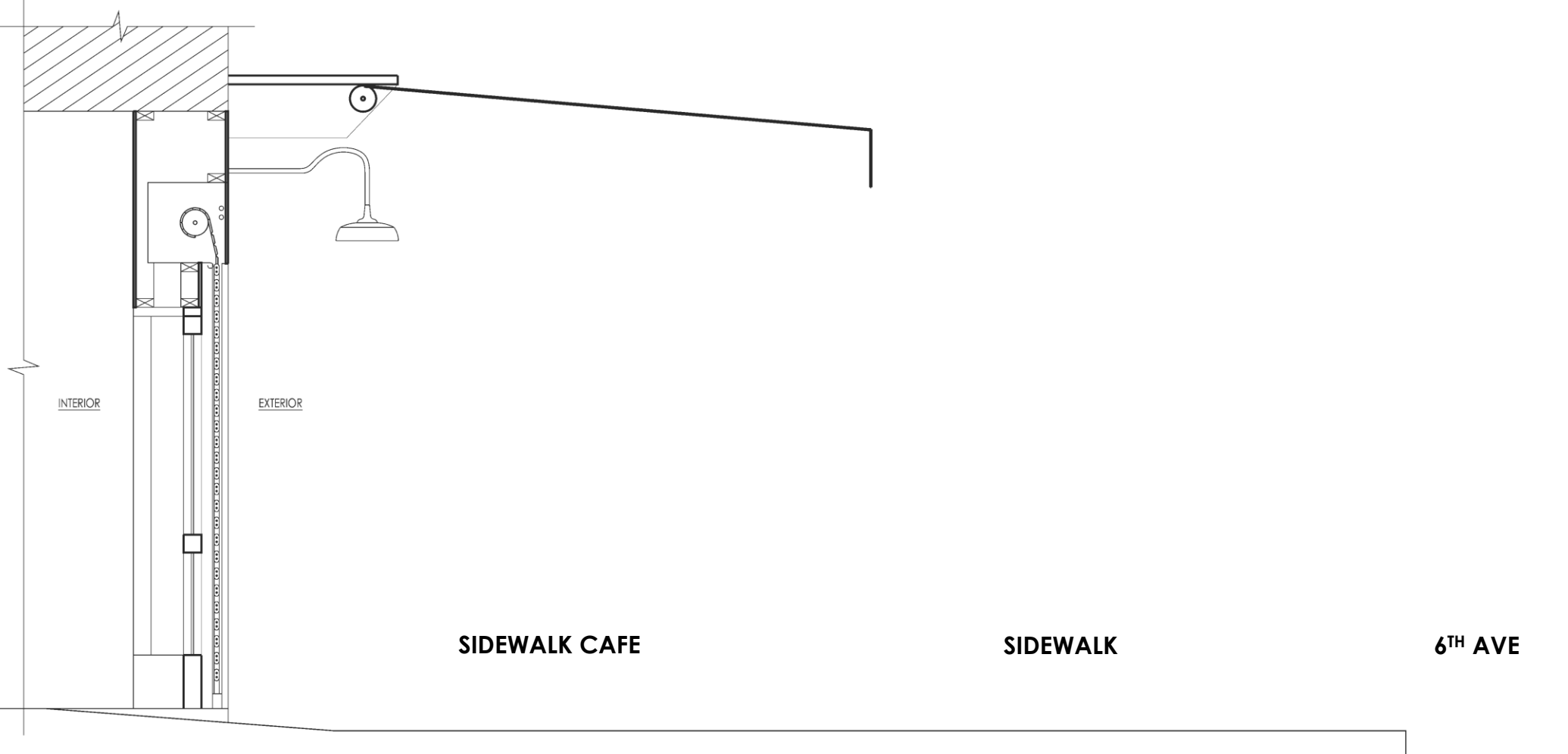
**PROPOSED
IL PITTINO**



**EXISTING
BAR PITTI**

il Pittino Storefront – 270 6th Ave.

Existing + Proposed – Section with Awning Extension



**PROPOSED
IL PITTINO**

il Pittino Storefront – 270 6th Ave.

Proposed

