

# 28 West 12<sup>th</sup> Street

## Greenwich Village Historic District

Landmarks Preservation Commission  
LPC#

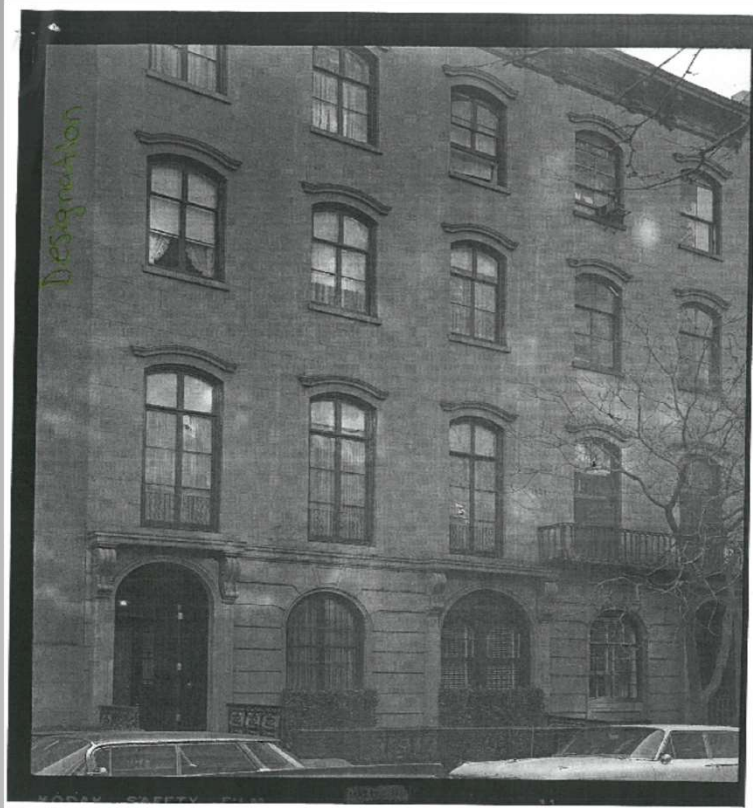
Request For Certificate of Appropriateness For:  
Legalization of the newly installed cornice.

- Greenwich Village Historic Landmark District Map

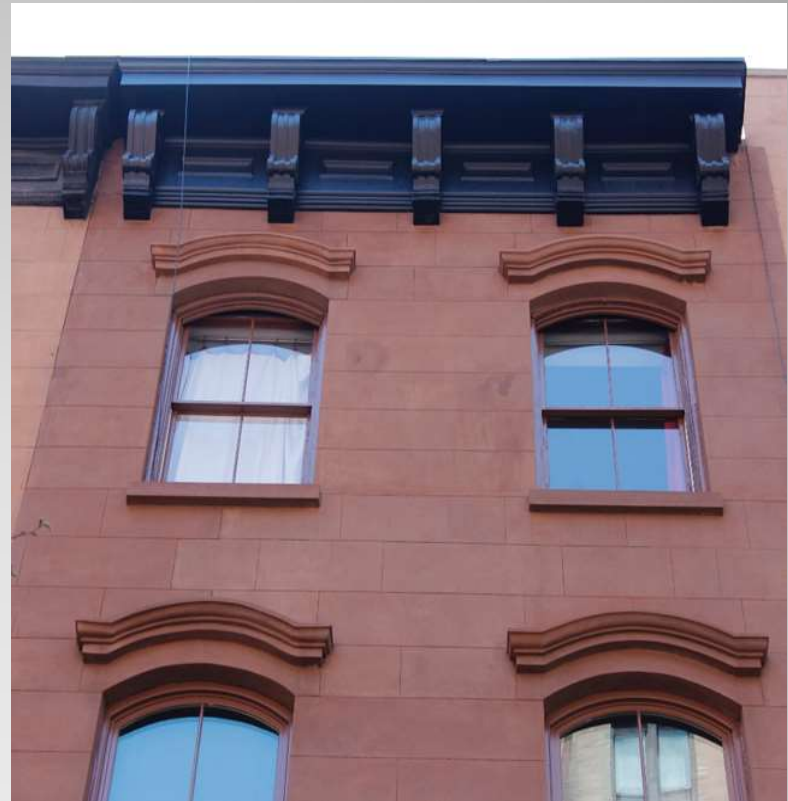
[illegible]

**28 West 12<sup>th</sup> Street, New York, NY 10011**

**Designation Photograph**



**Existing Condition Photograph**



**28 West 12<sup>th</sup> St**

## Existing Conditions Photograph



28 West 12<sup>th</sup> St



Neighboring Buildings W 12<sup>th</sup> St.  
West of 28 West 12<sup>th</sup> St



## Existing Condition Photograph With Neighboring Building

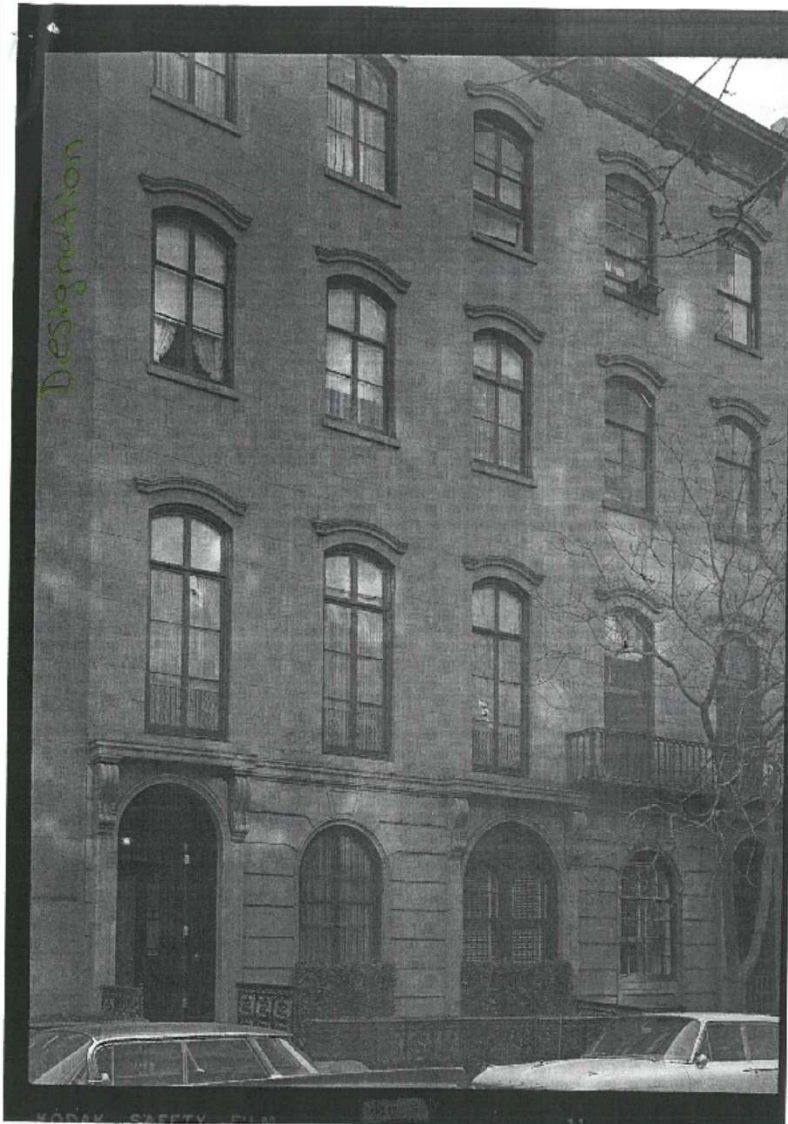


24 West 12<sup>th</sup> St

28 West 12<sup>th</sup> St



**28 West 12<sup>th</sup>  
Street 1940  
Historic  
Photograph**



**28 West 12<sup>th</sup>  
Street  
Designation  
Photograph**





**28 West 12<sup>th</sup>  
Street 1980  
Historic  
Photograph**



## Typical Conditions in the Greenwich Village Historic District

Greenwich Village is filled a variety of cornices reflecting the individual architectural features making each building unique with it's own story.





## Typical Conditions in the Greenwich Village Historic District Continued





## Typical Conditions in the Greenwich Village Historic District Continued

