

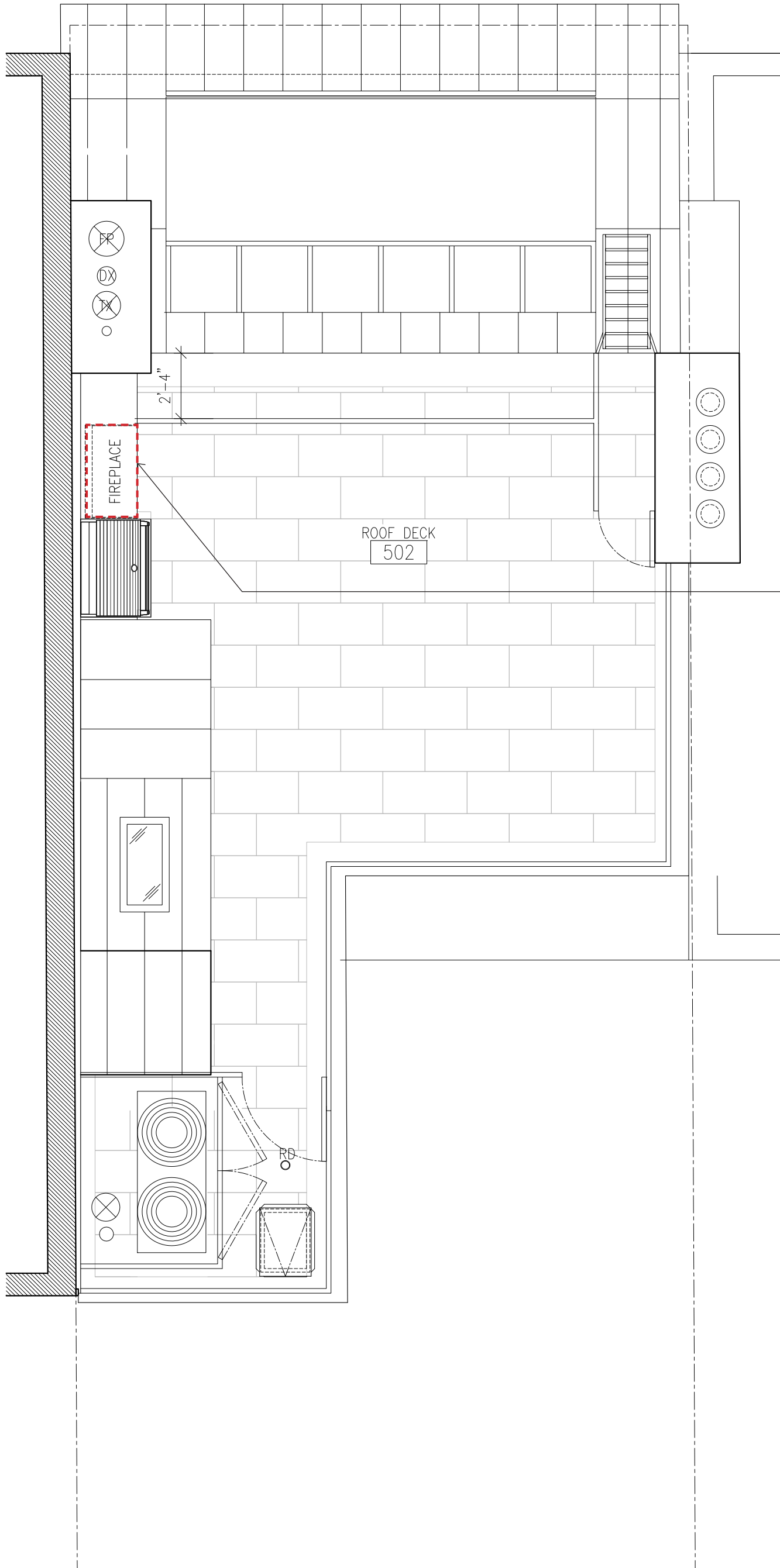
327 WEST 4TH STREET
NEW YORK, NY 10014

ADDITIONAL MATERIALS

LPC DOCKET #18-5249

September 13, 2018

SHEET 1 OF 5



LPC APPROVED
OUTDOOR FIREPLACE
LOCATION

327 WEST 4TH ST
327 WEST 4TH
STREET
NEW YORK,
NY 10014

ARCHITECT:
BADE STAGEBERG COX
25 CHAPEL STREET, SUITE 600
BROOKLYN, NEW YORK 11201
T: (718) 858 4409



DWG CONTENTS:
ROOF PLAN -
LPC APPROVED DESIGN
DATE:
SCALE: 1/4" = 1'-0"
DRAWING BY: BSC
PROJECT NO.:
DWG NO.: 2 OF 5



LPC Approved Design:
Seen from Eighth Ave. & Jane Street

327 WEST 4TH ST
327 WEST 4TH
STREET
NEW YORK,
NY 10014

ARCHITECT:
BADE STAGEBERG COX
25 CHAPEL STREET, SUITE 600
BROOKLYN, NEW YORK 11201
T: (718) 858 4409

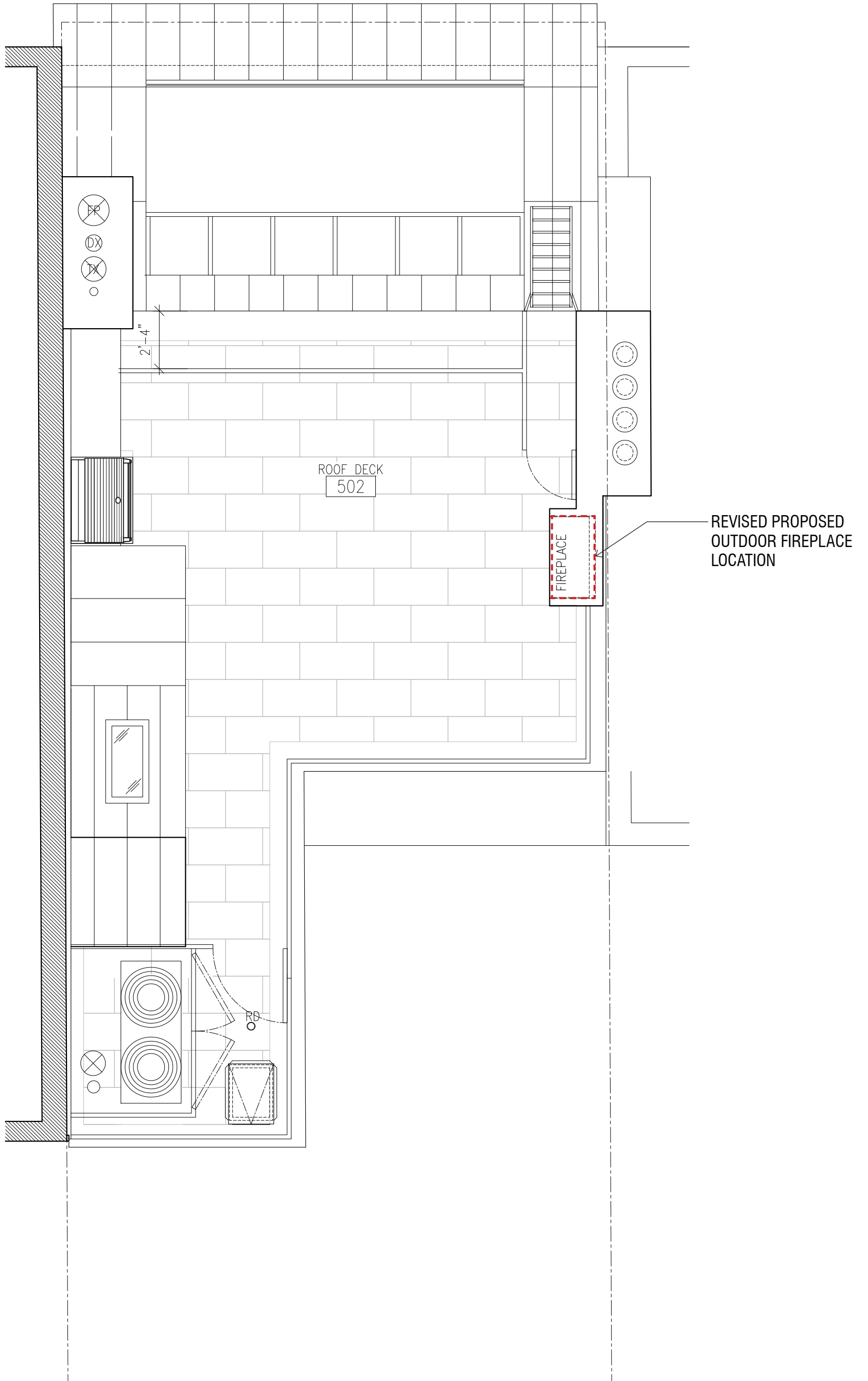
DWG CONTENTS:

LPC #18-5249

SCALE:

DWG NO.:

3 OF 5



327 WEST 4TH ST
 327 WEST 4TH
 STREET
 NEW YORK,
 NY 10014

ARCHITECT:
BADE STAGEBERG COX
 25 CHAPEL STREET, SUITE 600
 BROOKLYN, NEW YORK 11201
 T: (718) 858 4409



DWG CONTENTS:
**ROOF PLAN -
 REV PROPOSED DESIGN**
 DATE:
 SCALE: 1/4" = 1'-0"
 DRAWING BY: BSC
 PROJECT NO.:
 DWG NO.: **4 OF 5**



REVISED PROPOSED:
Seen from Eighth Ave. & Jane Street

327 WEST 4TH ST
327 WEST 4TH
STREET
NEW YORK,
NY 10014

ARCHITECT:
BADE STAGEBERG COX
25 CHAPEL STREET, SUITE 600
BROOKLYN, NEW YORK 11201
T: (718) 858 4409

DWG CONTENTS:

LPC #18-5249

SCALE:

DWG NO.:

5 OF 5