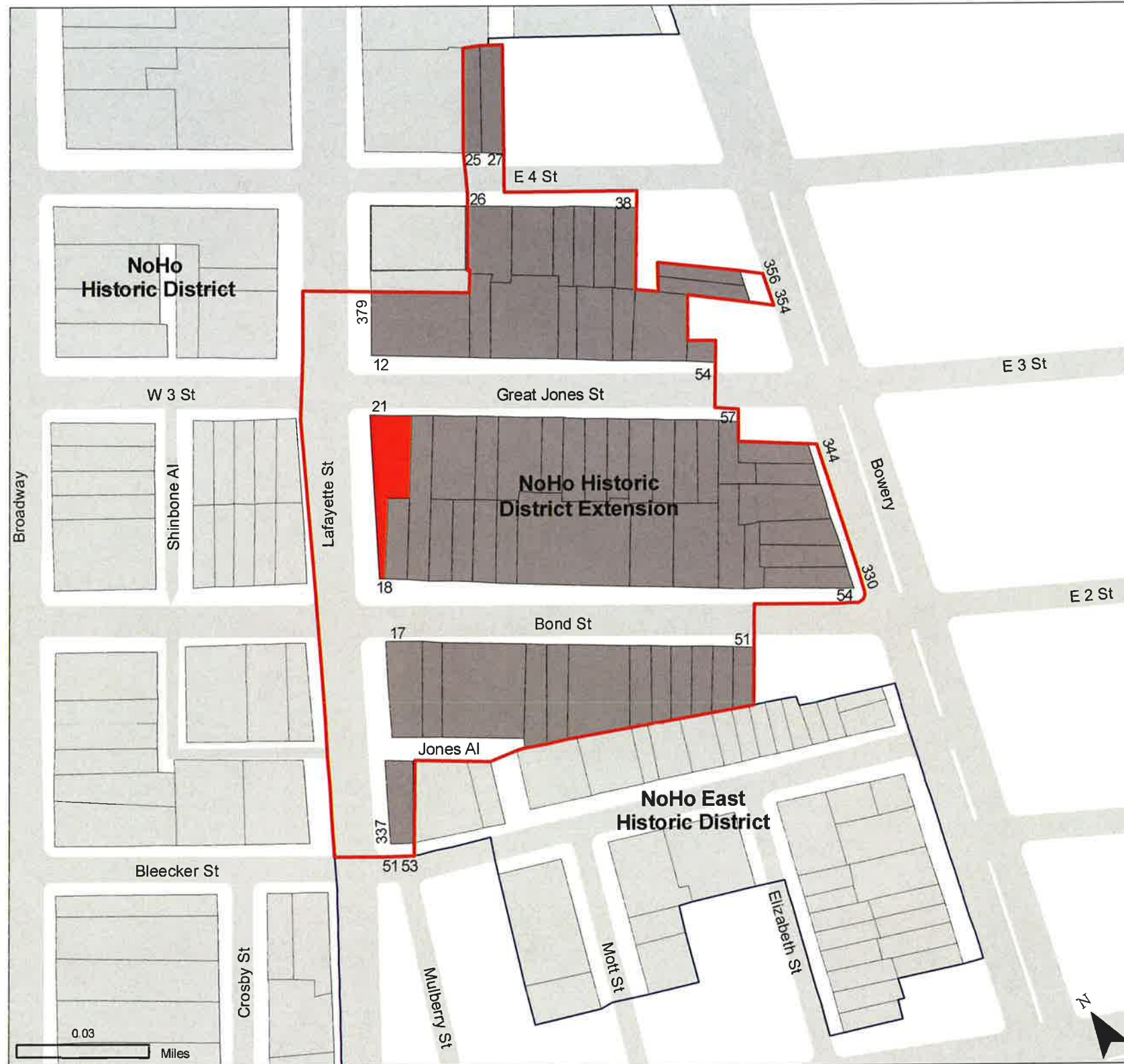




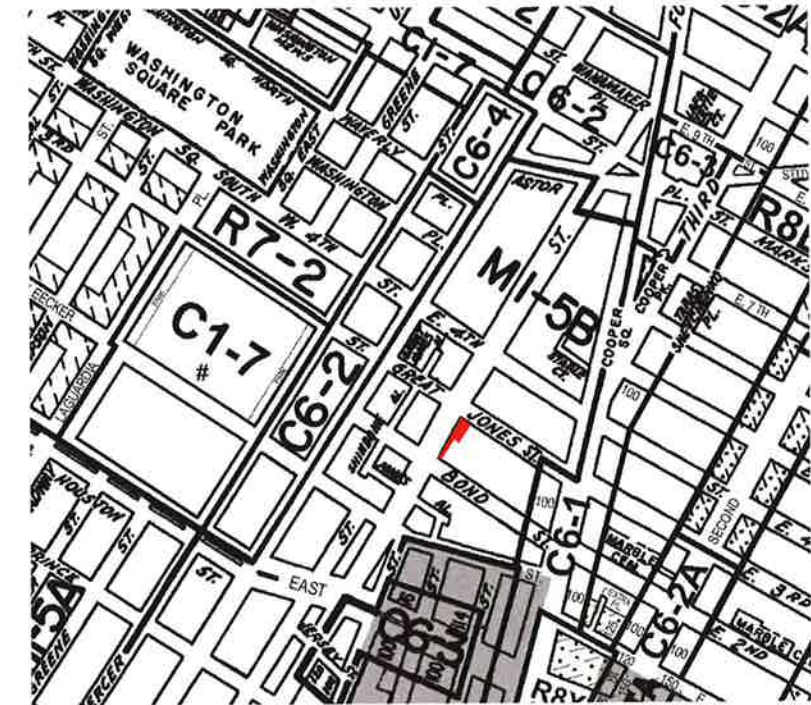
# Landmarks Preservation Commission Submission

9 June 2016

**363 Lafayette Street**  
NoHo Historic District Extension



NOHO HISTORIC DISTRICT EXTENSION  
SOURCE: NYC LPC

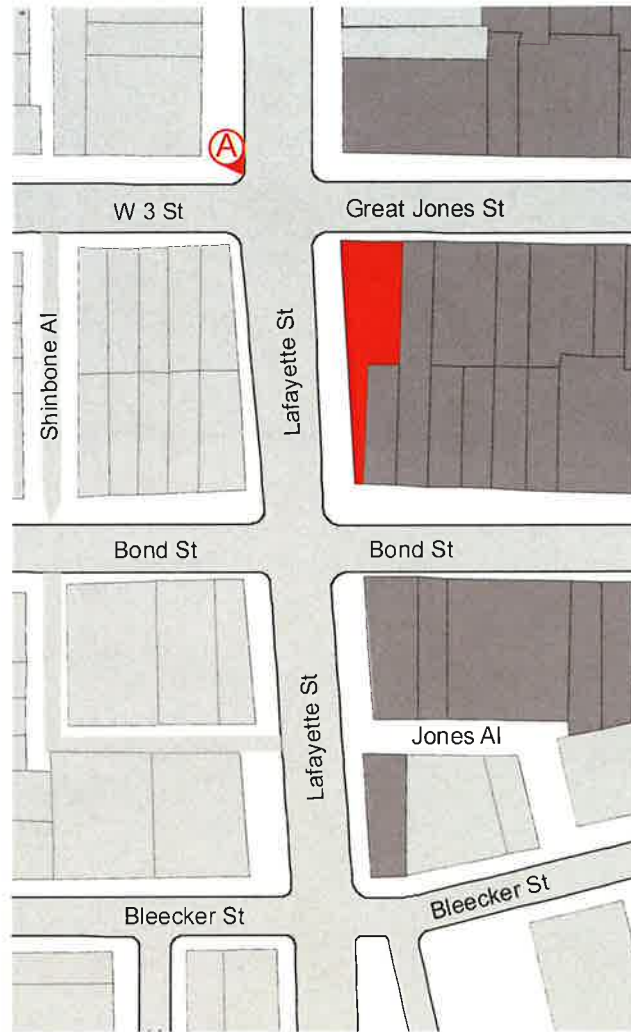


ZONING MAP 12C  
SOURCE: NYC DCP

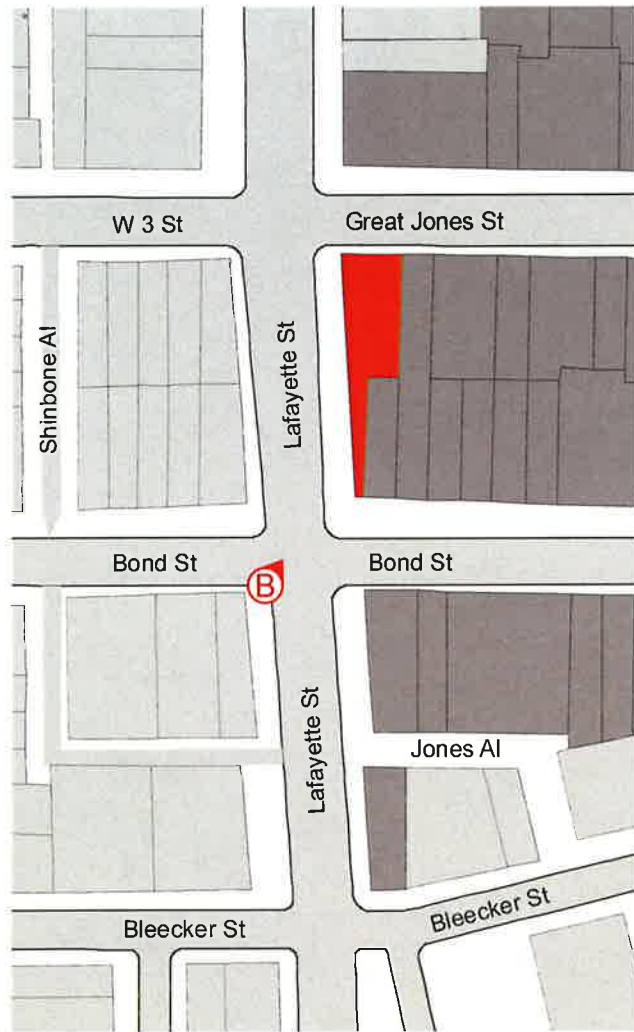


NYC DIGITAL TAX MAP  
BLOCK: 530, LOT: 17  
SOURCE: NYC DOF





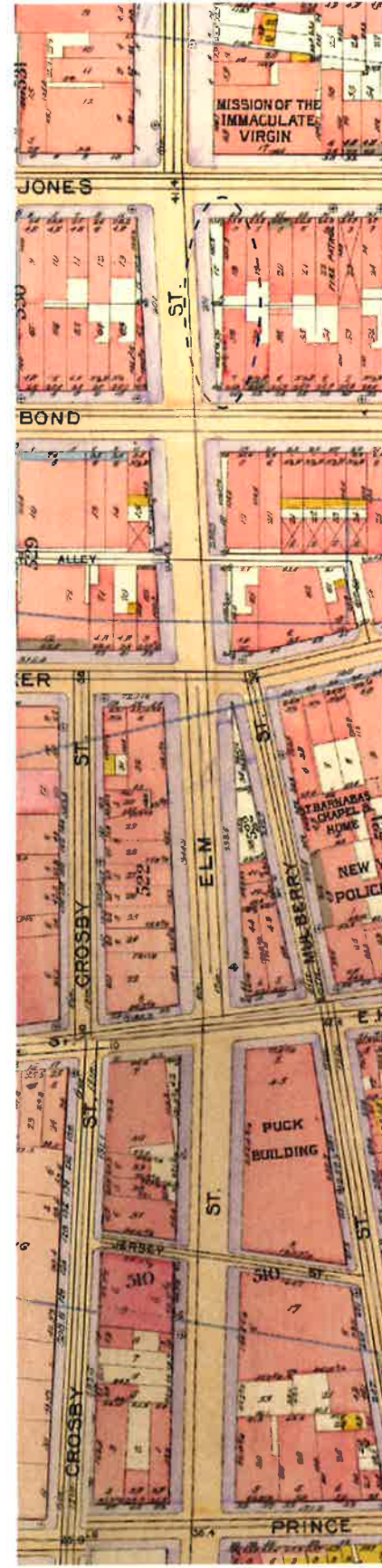








1897 BROMLEY STREET MAP - PRE CUT



1899 BROMLEY STREET MAP - EXTENSION



1900 - VIEW LOOKING NORTH ALONG LAFAYETTE



1900 - VIEW LOOKING SOUTH ON LAFAYETTE



1900 - VIEW NORTH ON LAFAYETTE





LAFAYETTE AND BOND LOOKING AT THE SITE - 1934



1934

LAFAYETTE AND GREAT JONES LOOKING AT THE SITE - 1934 - SOURCE NY PUBLIC LIBRARY

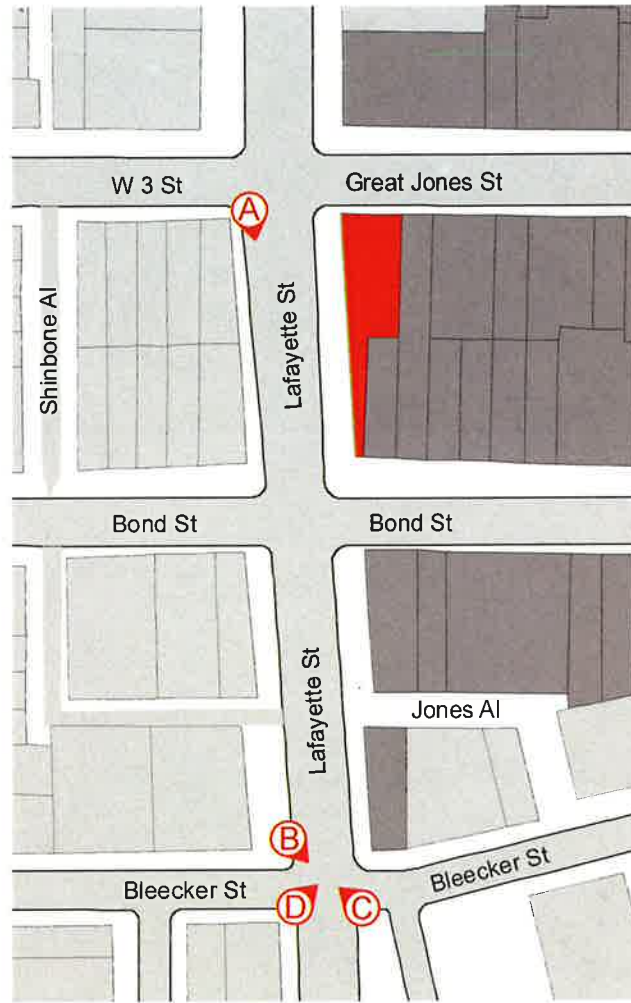


LAFAYETTE AND GREAT JONES LOOKING AT THE SITE - 1935 - SOURCE NY PUBLIC LIBRARY













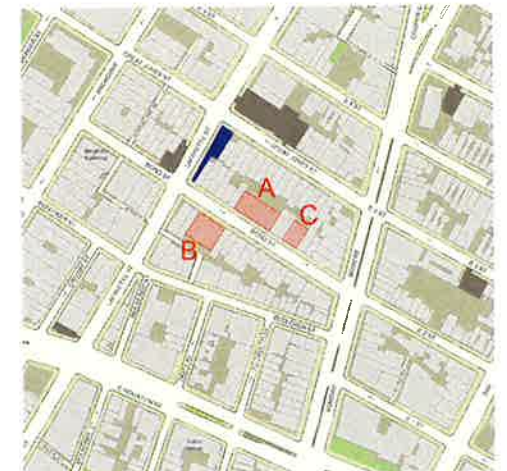




**A**  
**40 BOND STREET**  
 HERZOG & DE MEURON - 2007  
 -REPETITIVE FACADE  
 -THREE STORY SETBACK  
 -TALL GROUND FLOOR

**B**  
**25 BOND STREET**  
 BKSK ARCHITECTS - 2005  
 -LIGHT COLORED FACADE  
 -DARK TWO REPETITIVE SETBACK

**C**  
**48 BOND**  
 DEBORAH BERKE PARTNERS - 2008  
 -DARK REPETITIVE FACADE  
 -LIGHT COLORED 2 STORY SETBACK







A  
417 LAFAYETTE



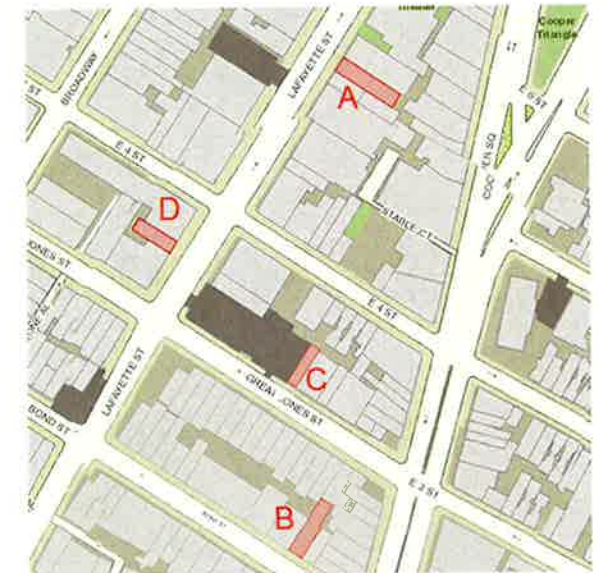
B  
50 BOND STREET



C  
40 GREAT JONES



D  
382 LAFAYETTE STREET







50 BOND STREET



43 GREAT JONES STREET



48-52 GREAT JONES STREET



47 GREAT JONES STREET



39 GREAT JONES STREET



382 LAFAYETTE STREET



35 GREAT JONES STREET



35 BOND STREET



34 EAST 4TH STREET



31 BOND STREET



21 BOND STREET



17 BOND STREET





\*Image for 25 Great Jones is an rendering of the proposed design as shown in the BSKS website.

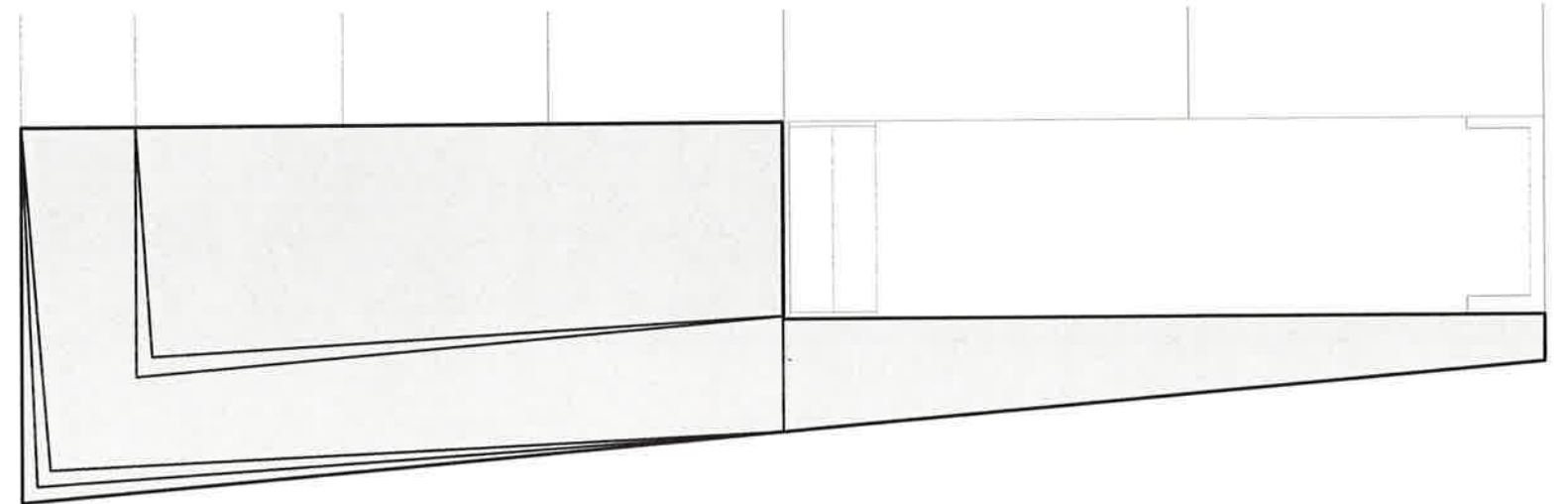
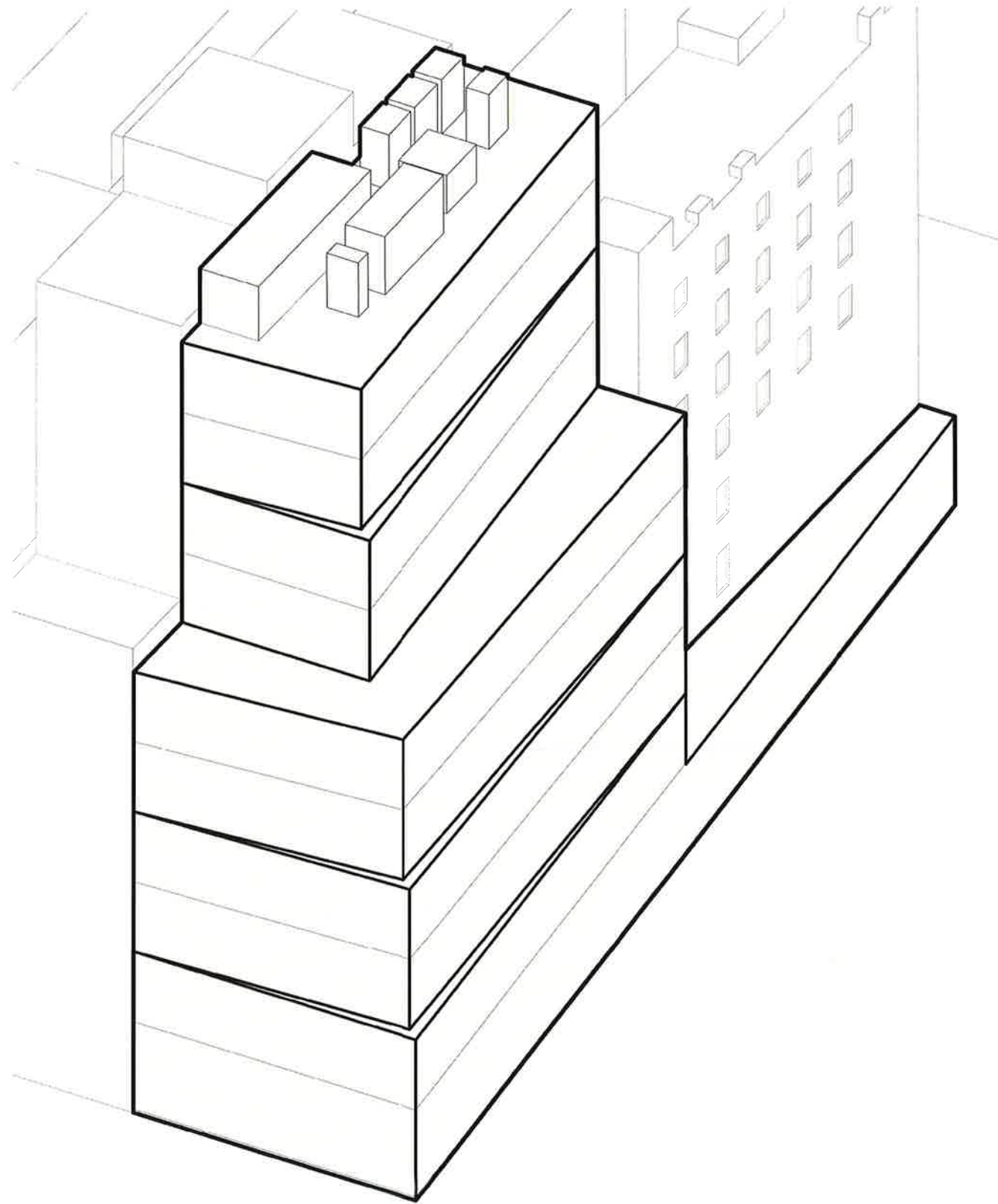






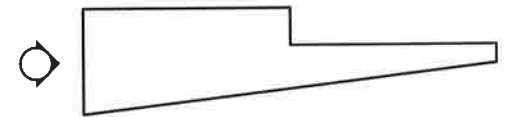






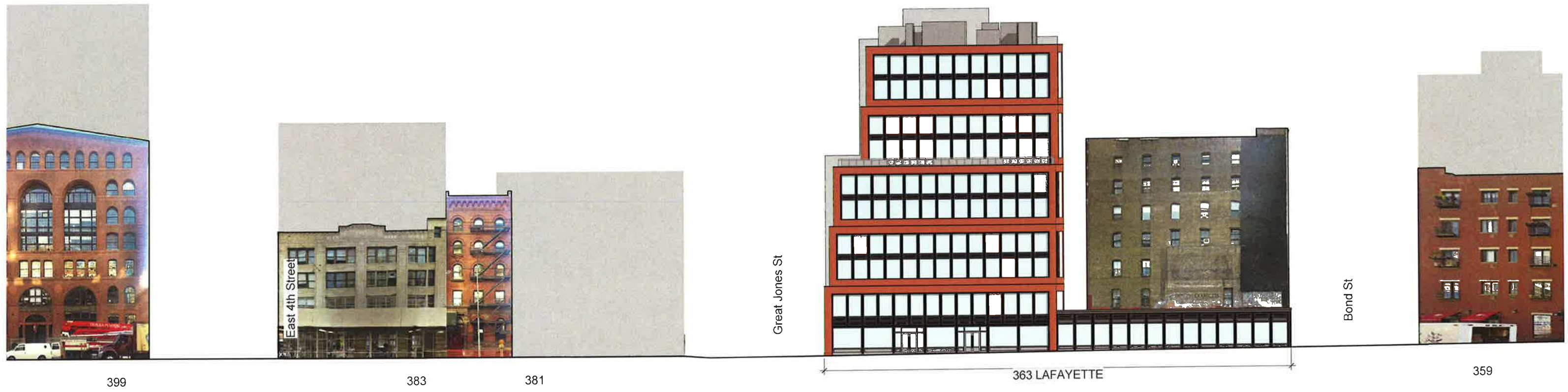
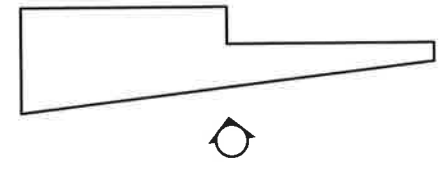
FLATIRON PROW



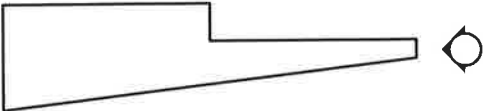


\*Image for 25 Great Jones is an rendering of the proposed design as shown in the BKSK website.









Bond Street

\*Image for 25 Great Jones is an rendering of the proposed design as shown in the BKSK website.



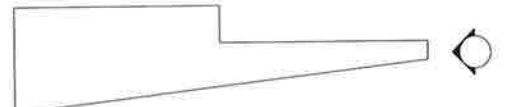
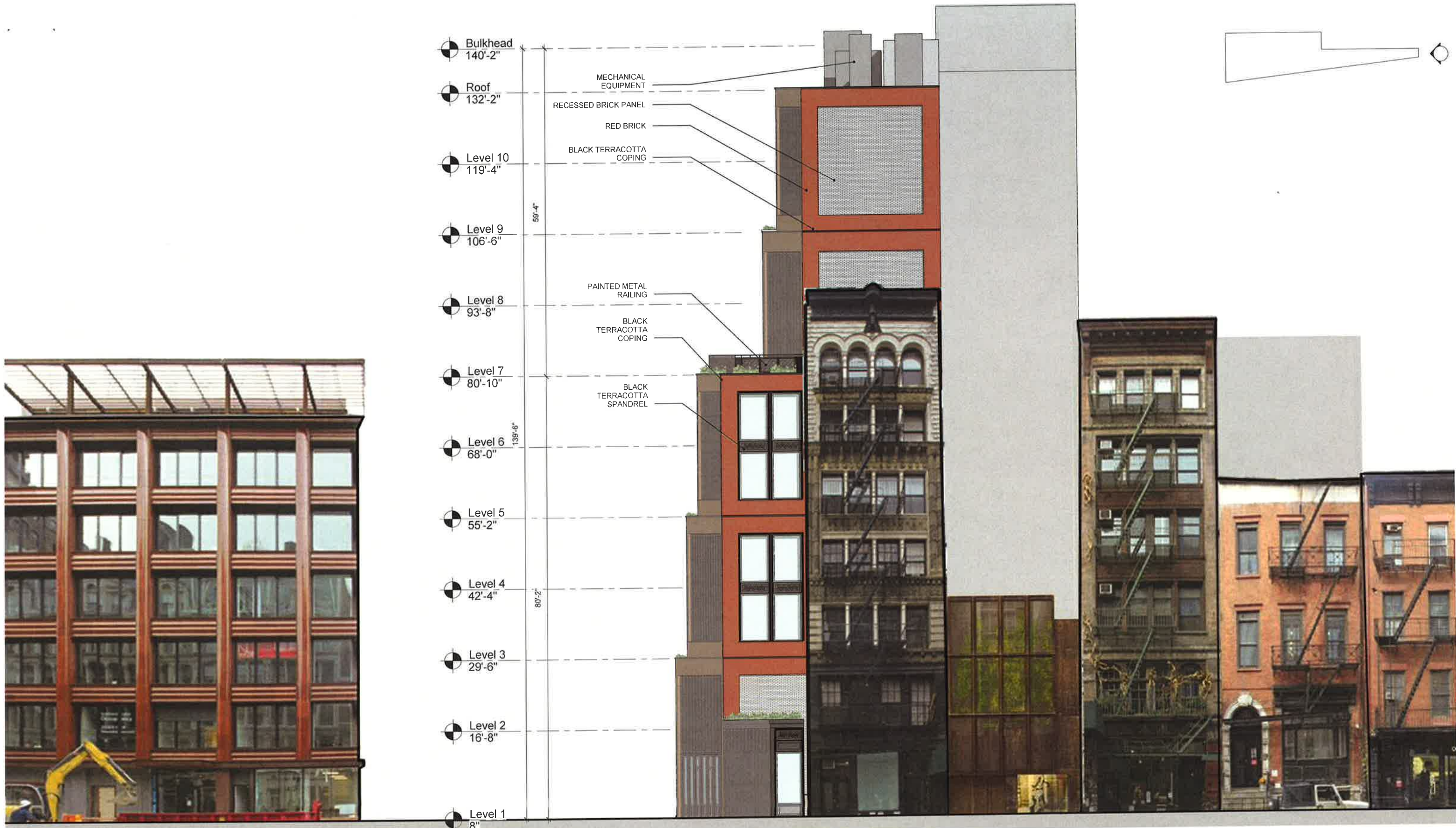


\*Image for 25 Great Jones is an rendering of the proposed design as shown in the BKS website.







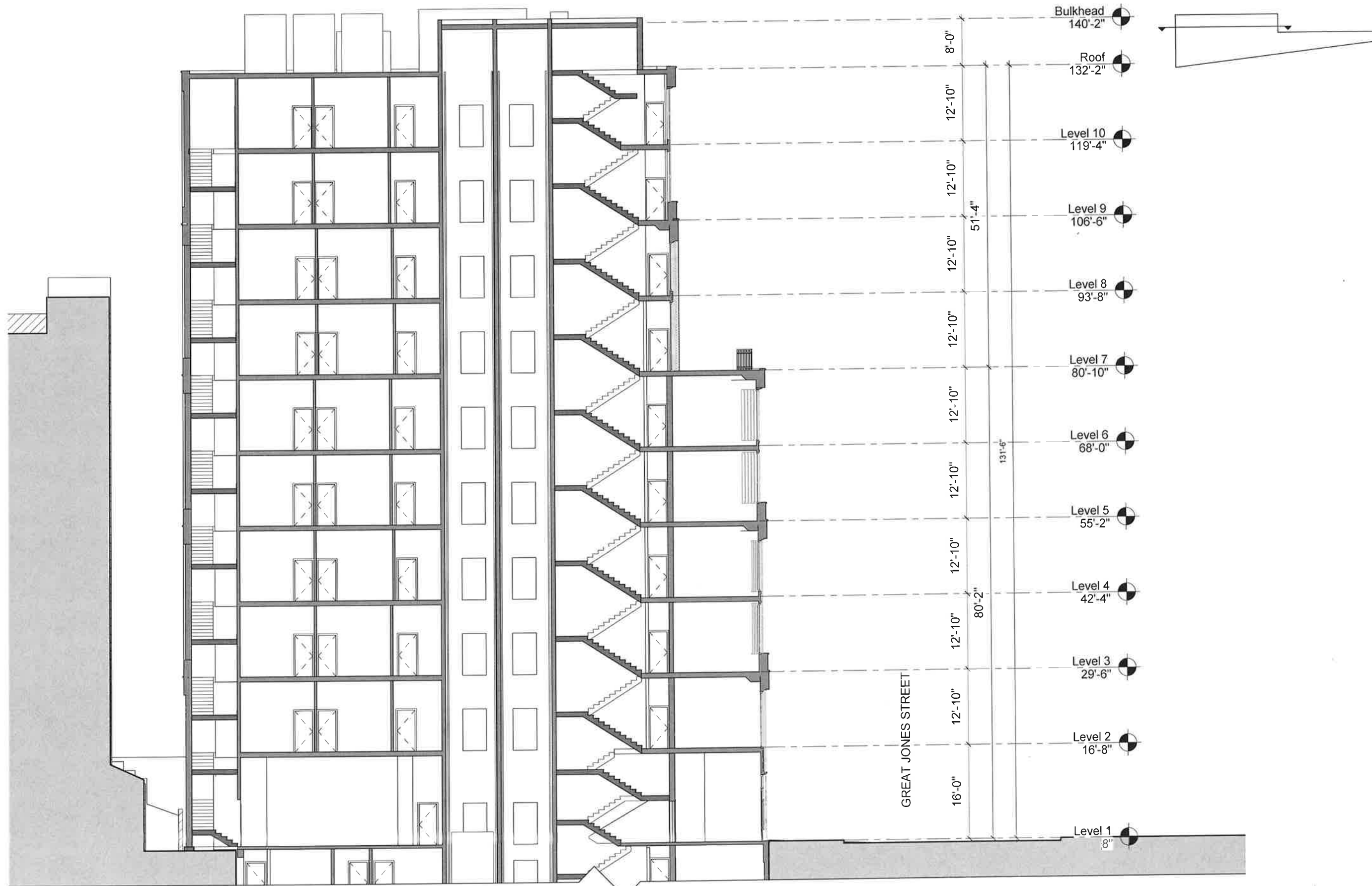


\*Image for 25 Great Jones is an rendering of the proposed design as shown in the BKSK website.

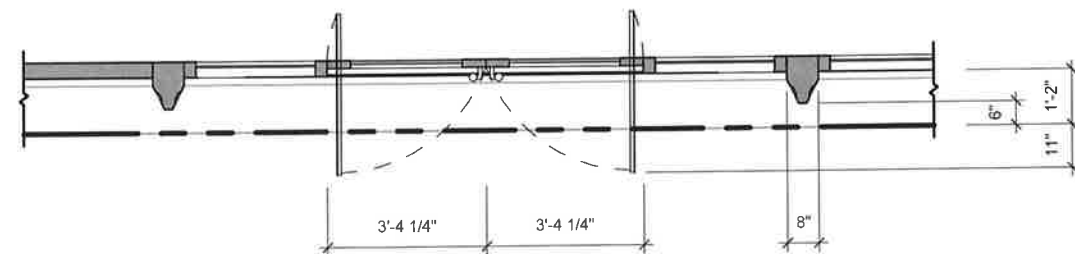
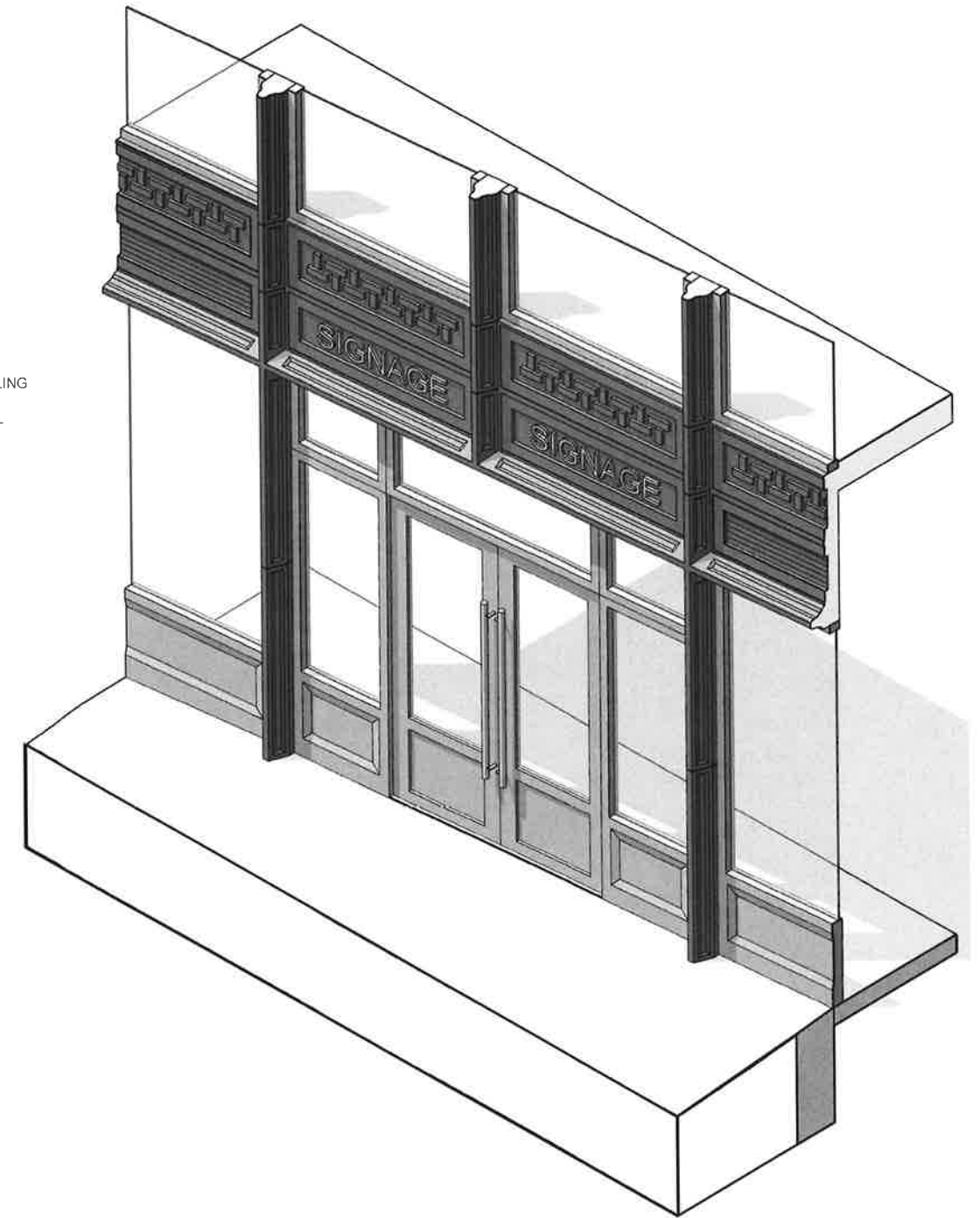
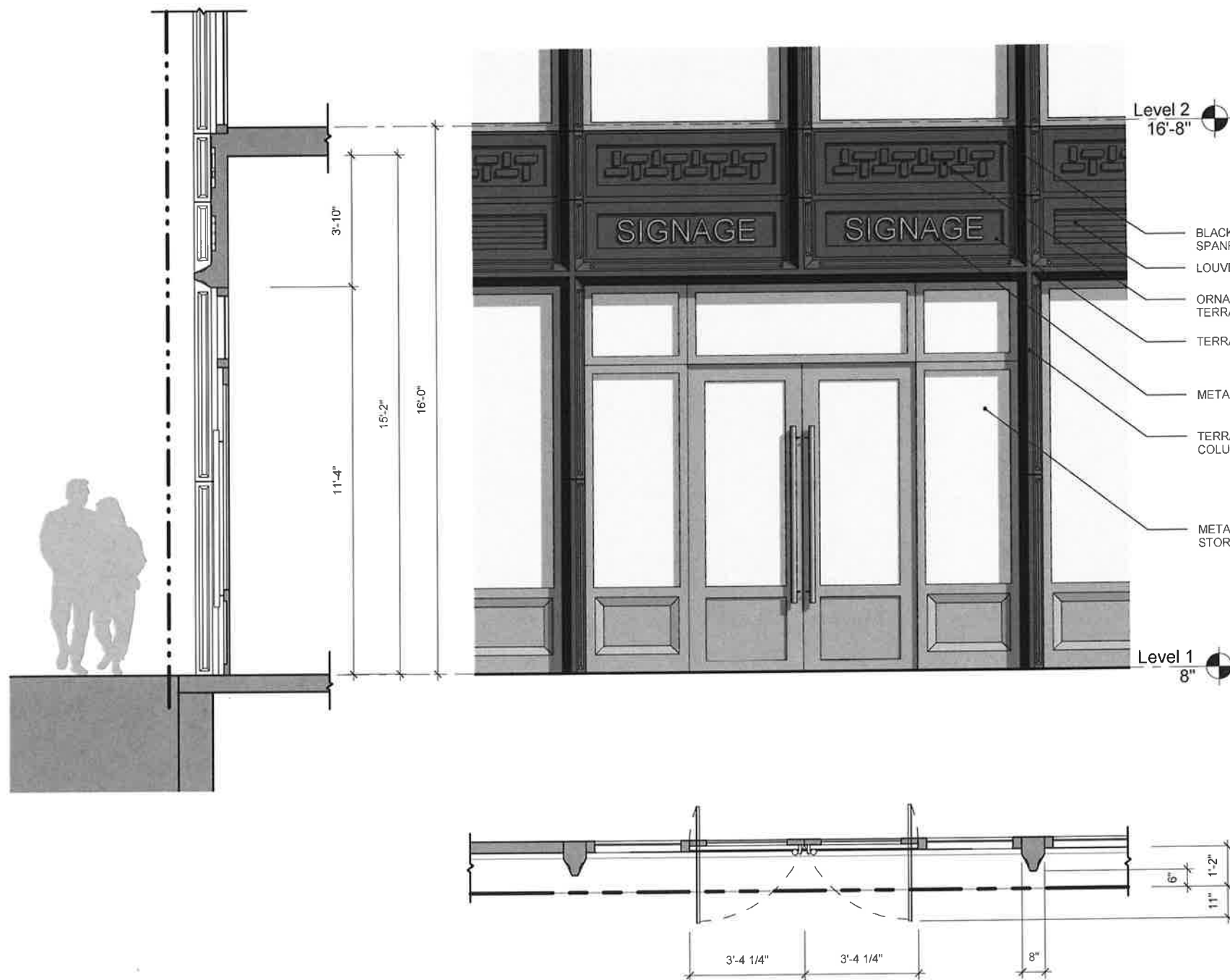




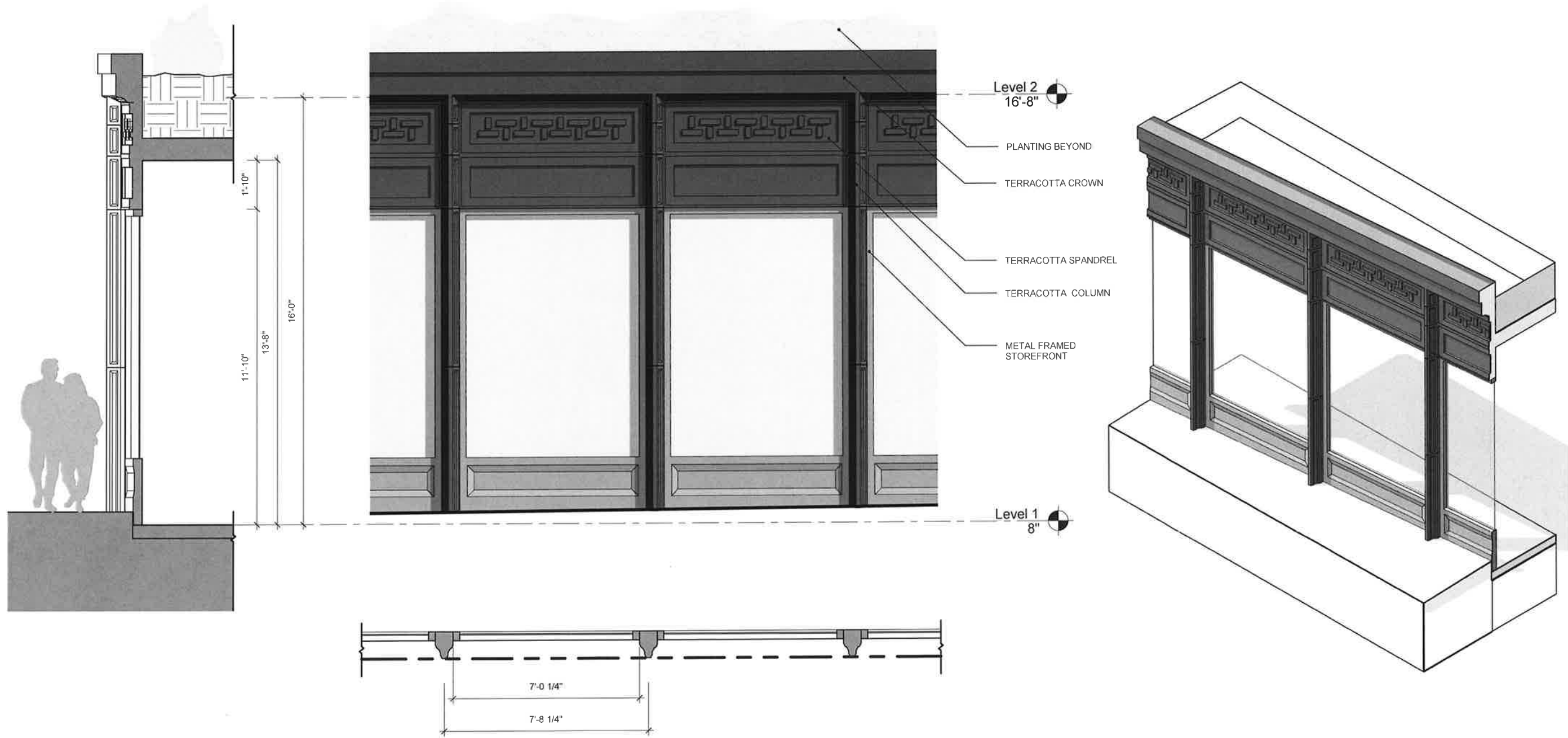




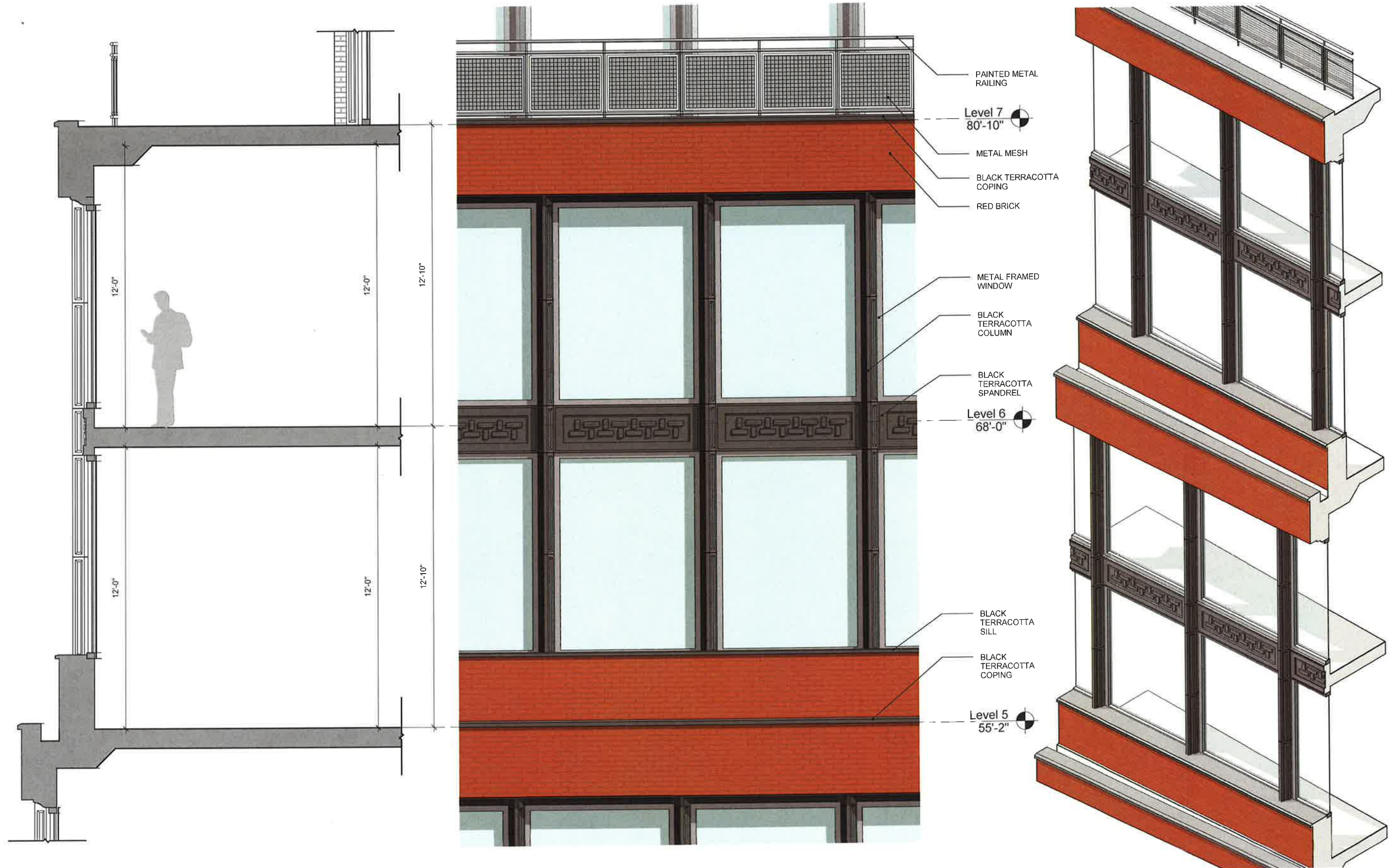




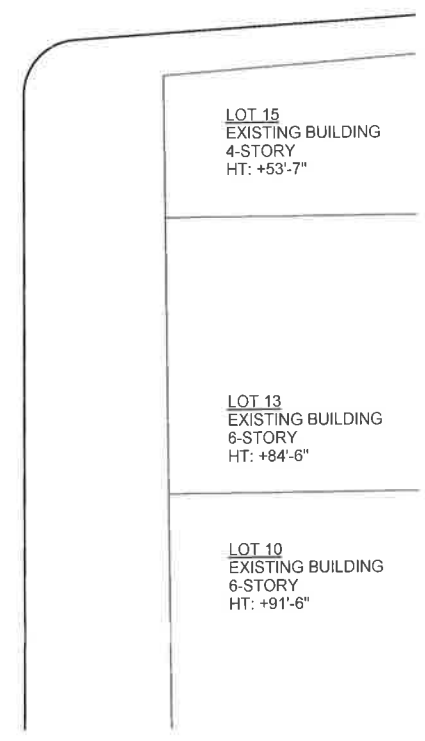
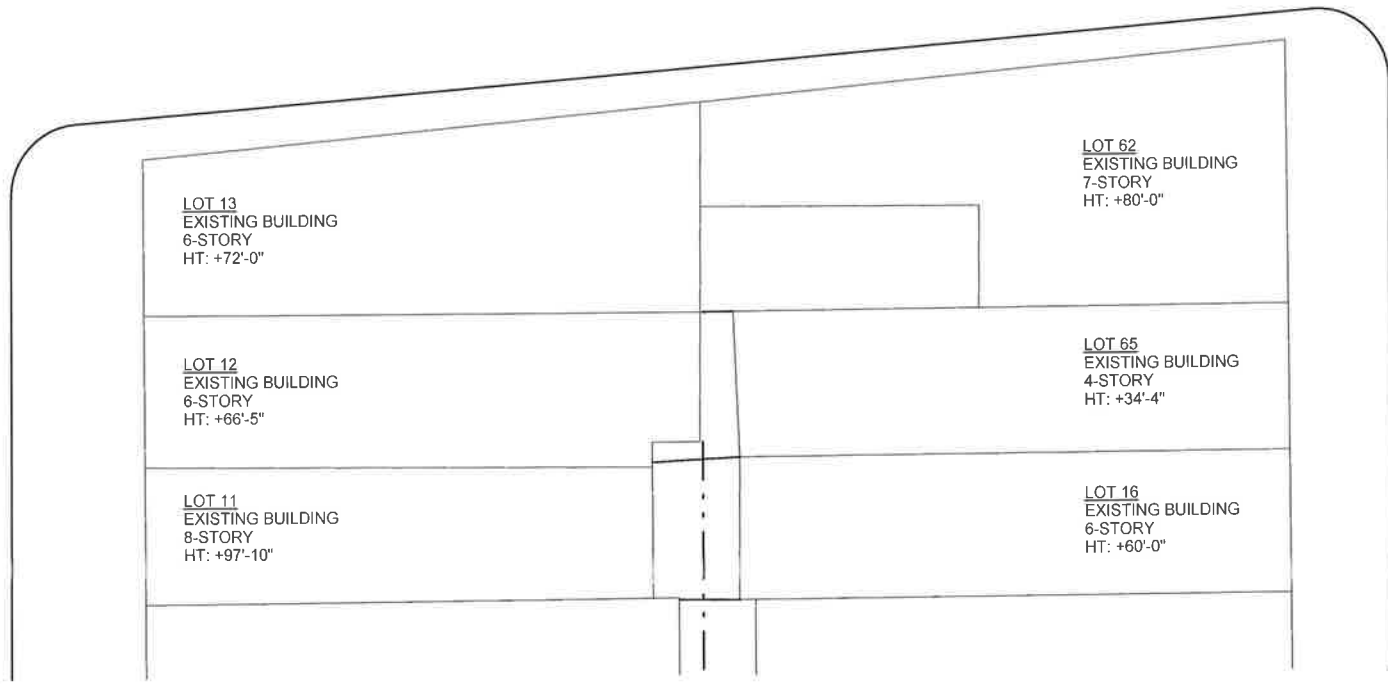
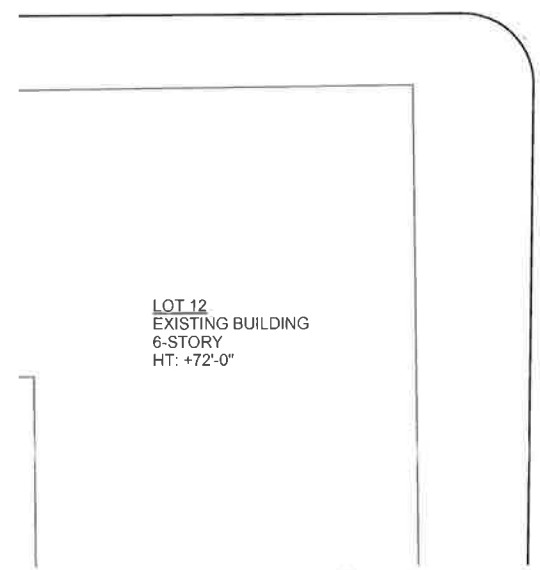
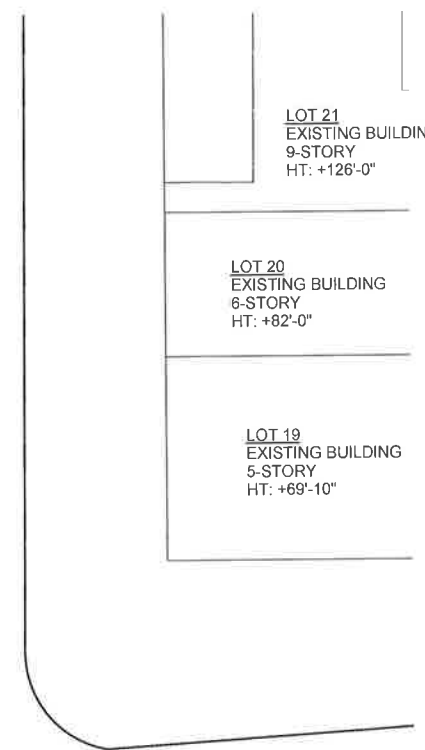
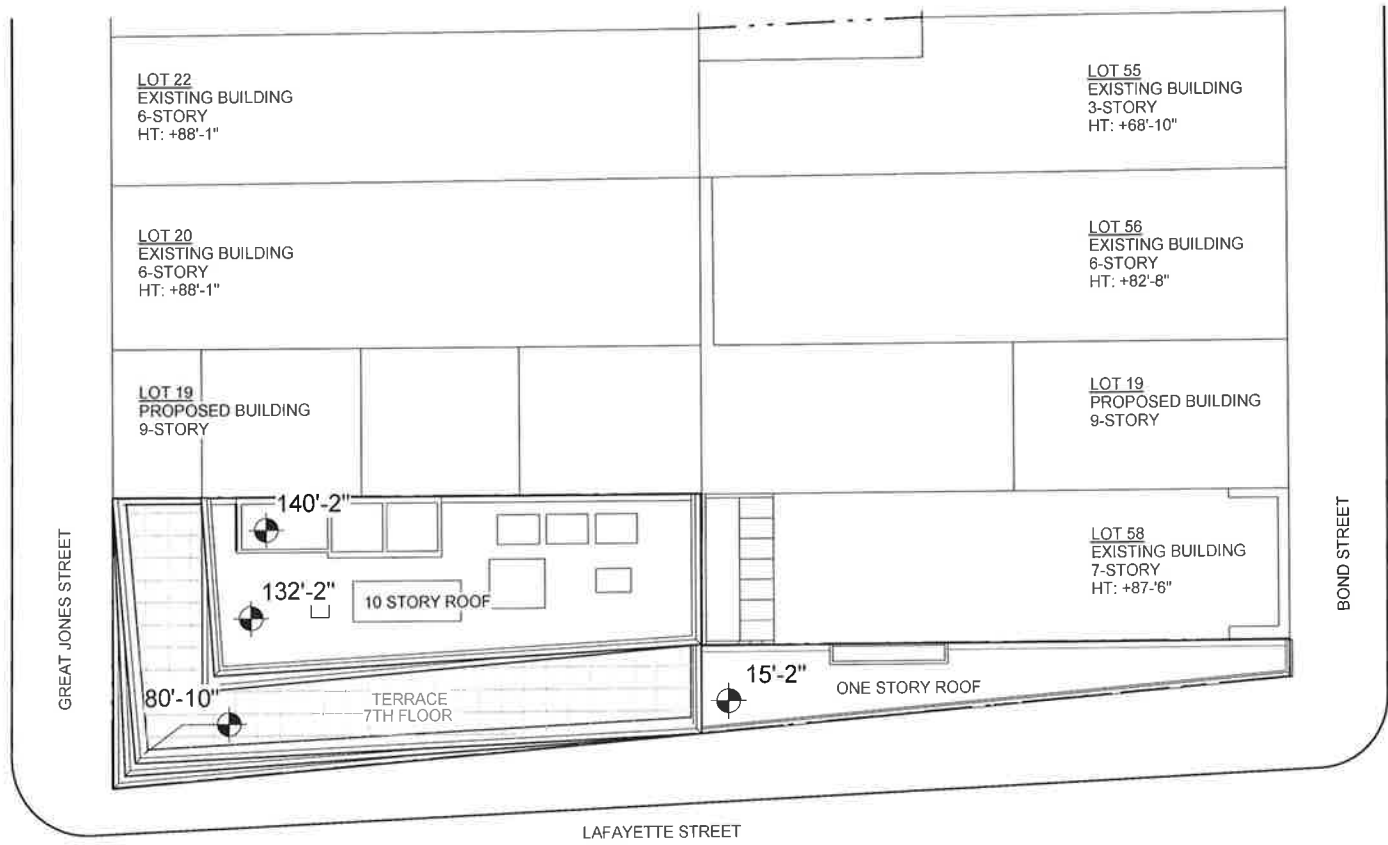
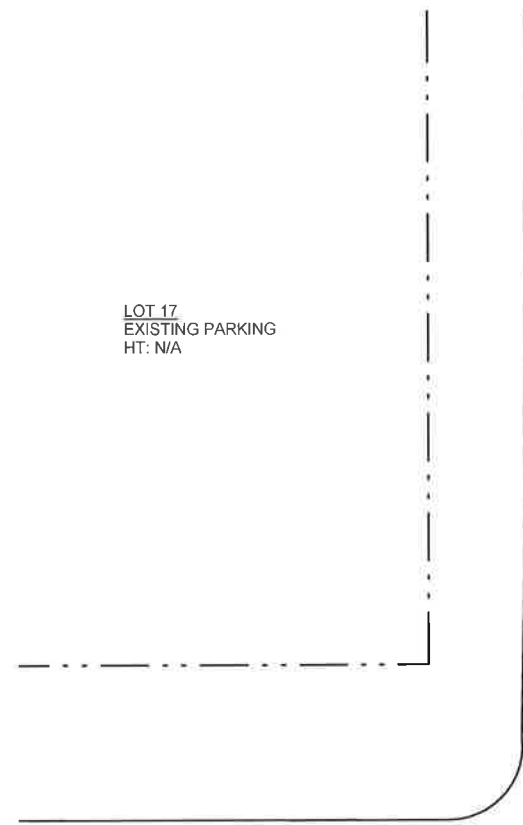




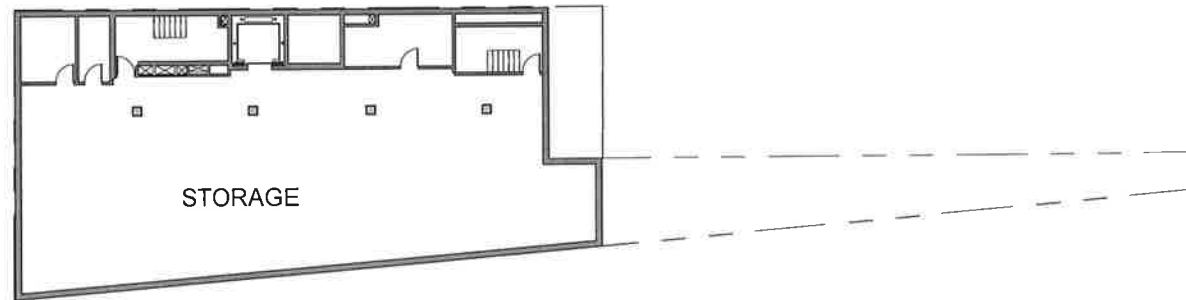




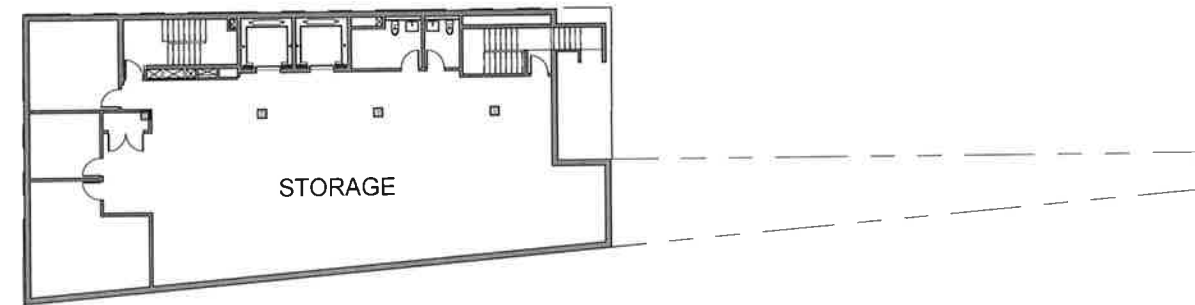




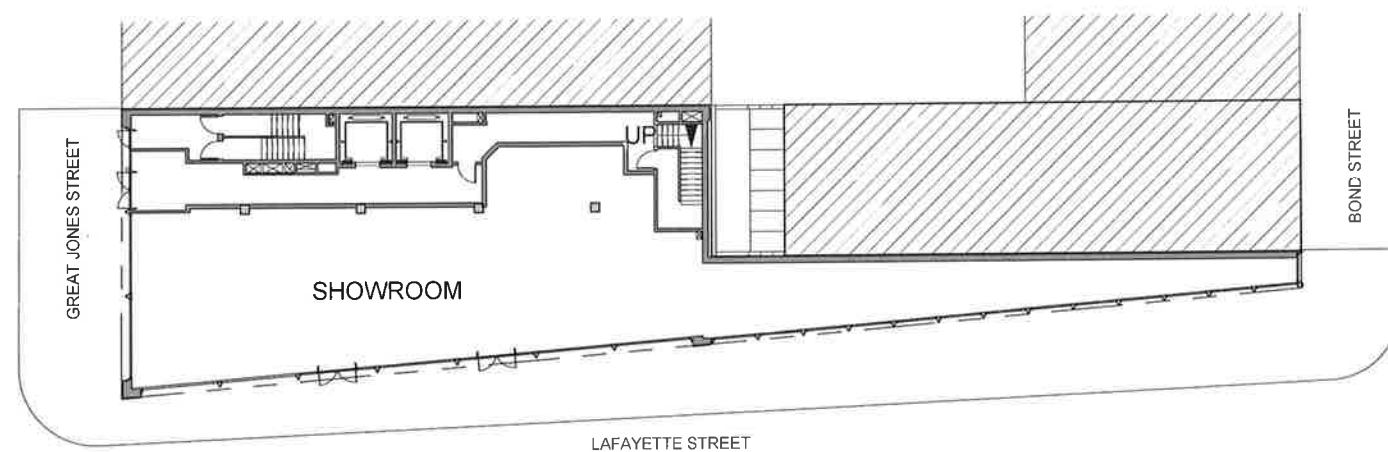




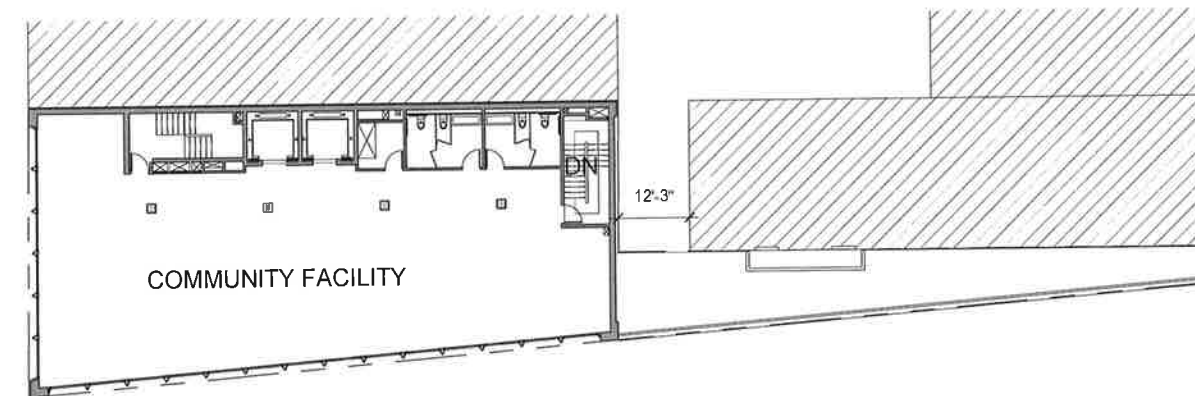
Subcellar



Cellar



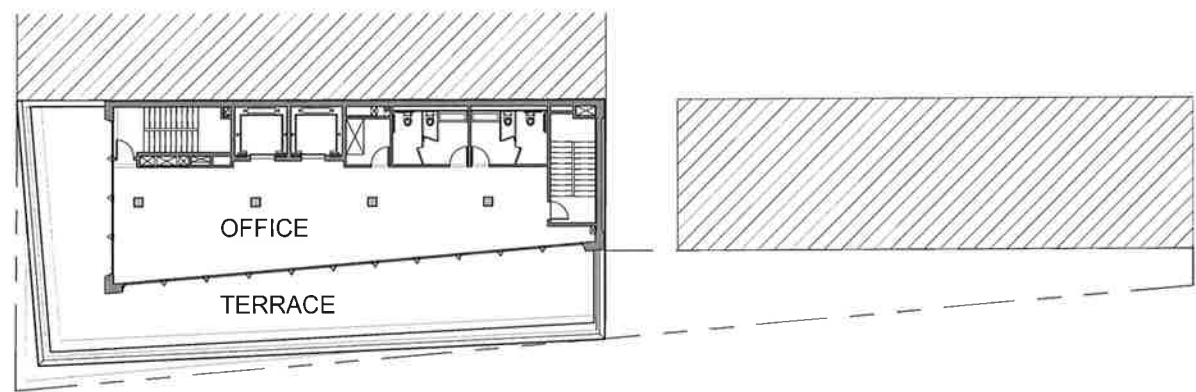
Level 1



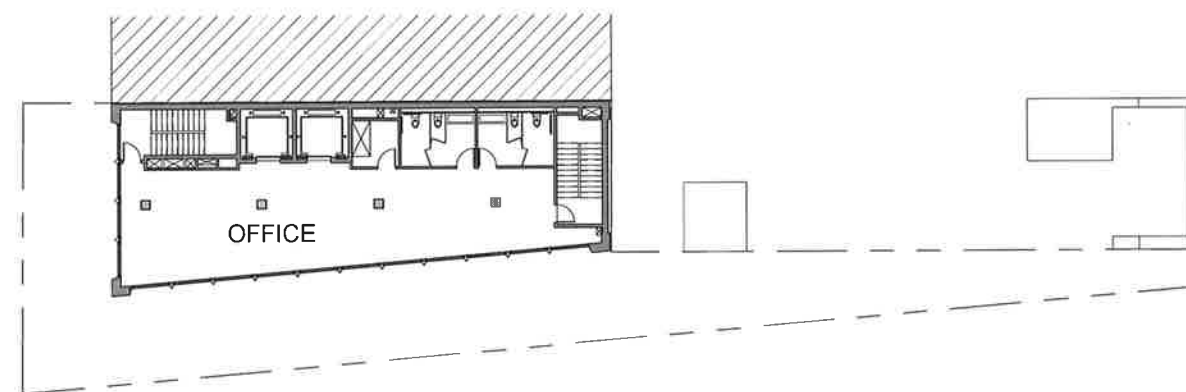
Level 2



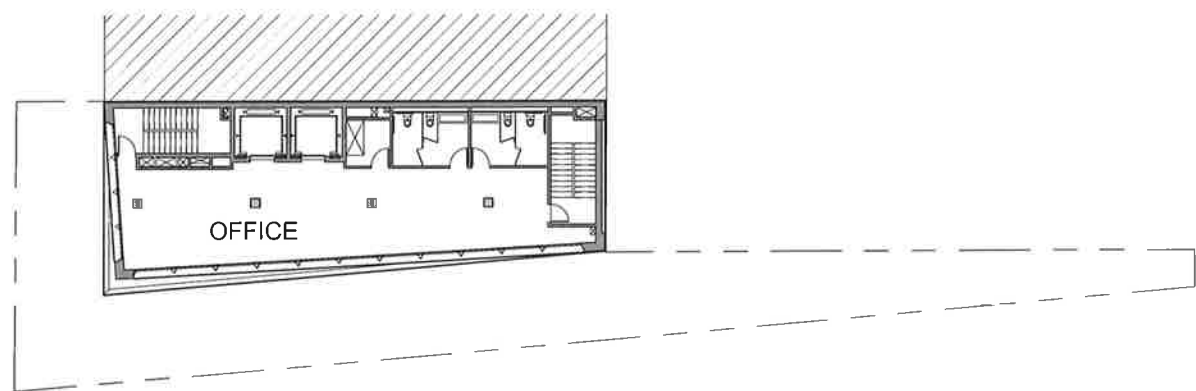




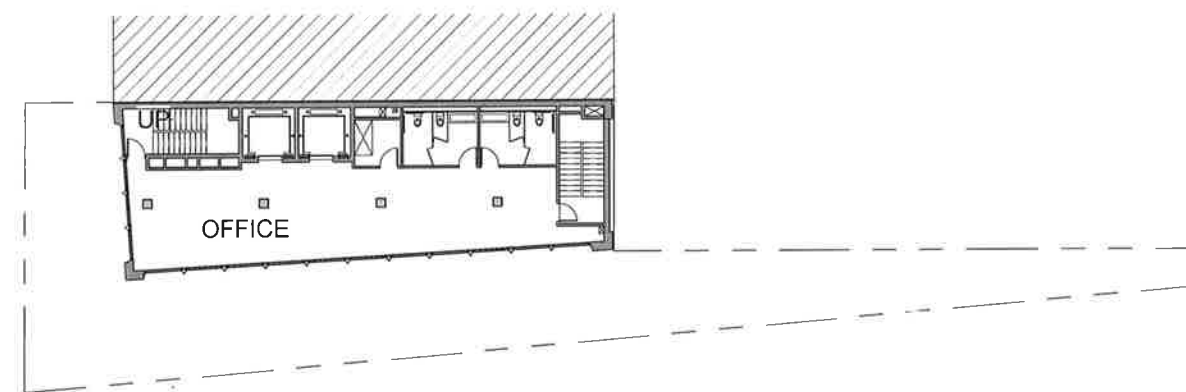
Level 7



Level 8



Level 9

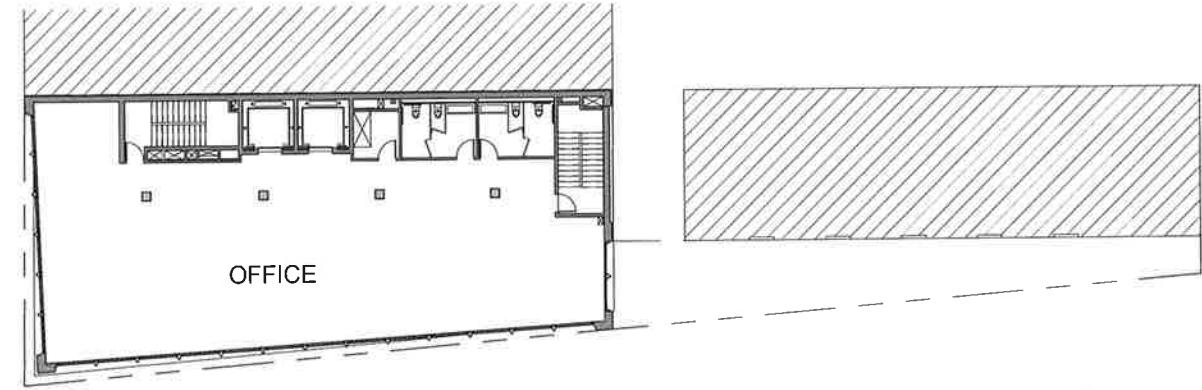


Level 10

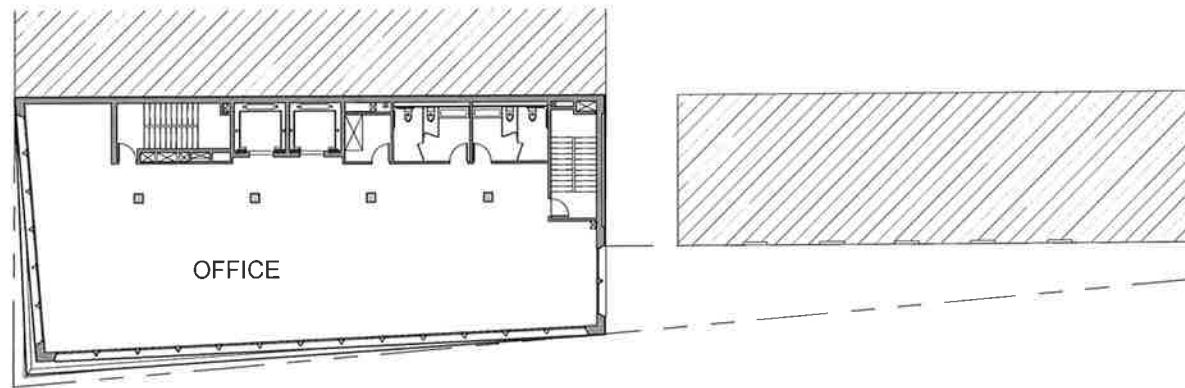




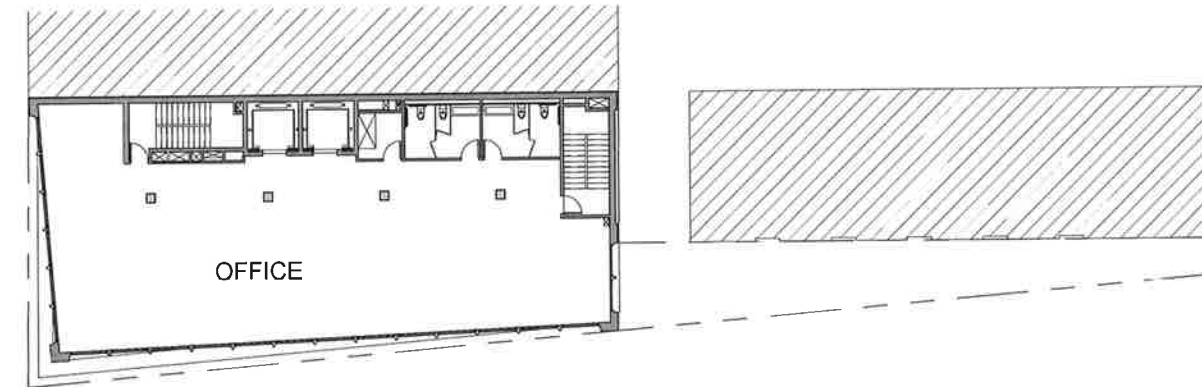
Level 3



Level 4



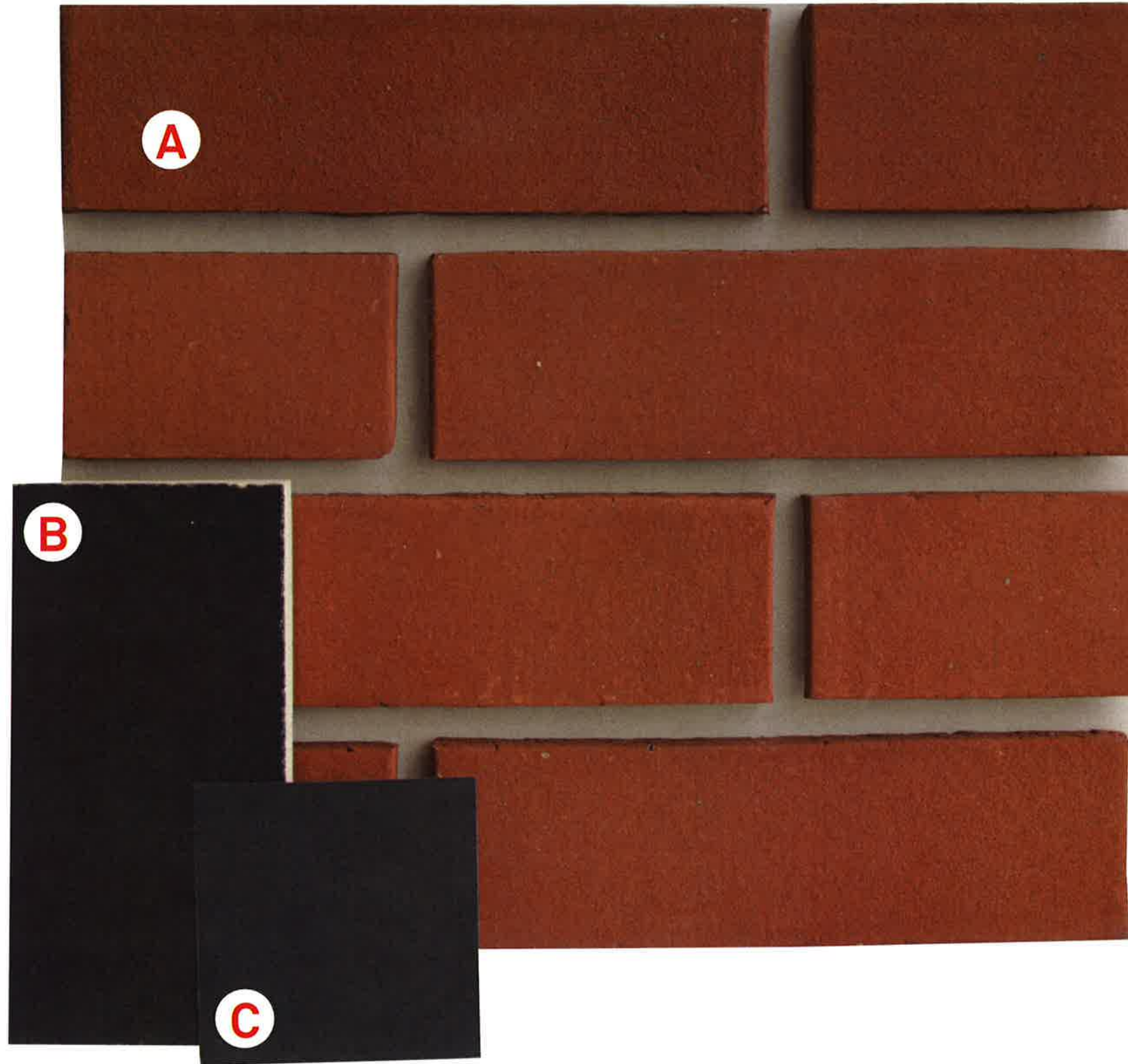
Level 5



Level 6







- A Red Brick
- B Matte Black Terracotta
- C Dark Grey Painted Aluminum