



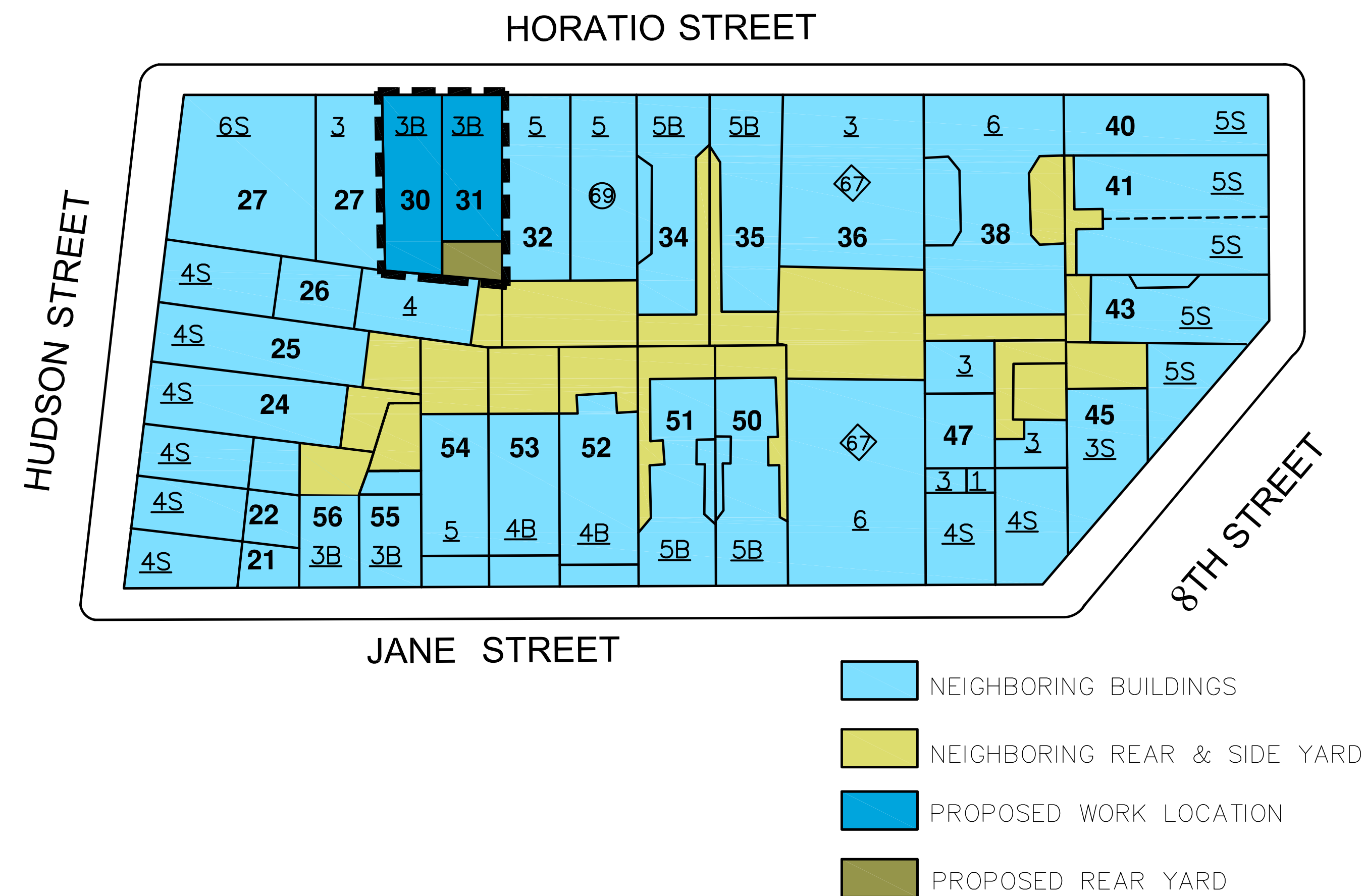
**PHOTO OF EXISTING BUILDINGS AT HORATIO ST.**



**TAX PHOTO  
44 & 46 HORATIO**



**TAX PHOTO  
44 & 46 HORATIO - 1940S**



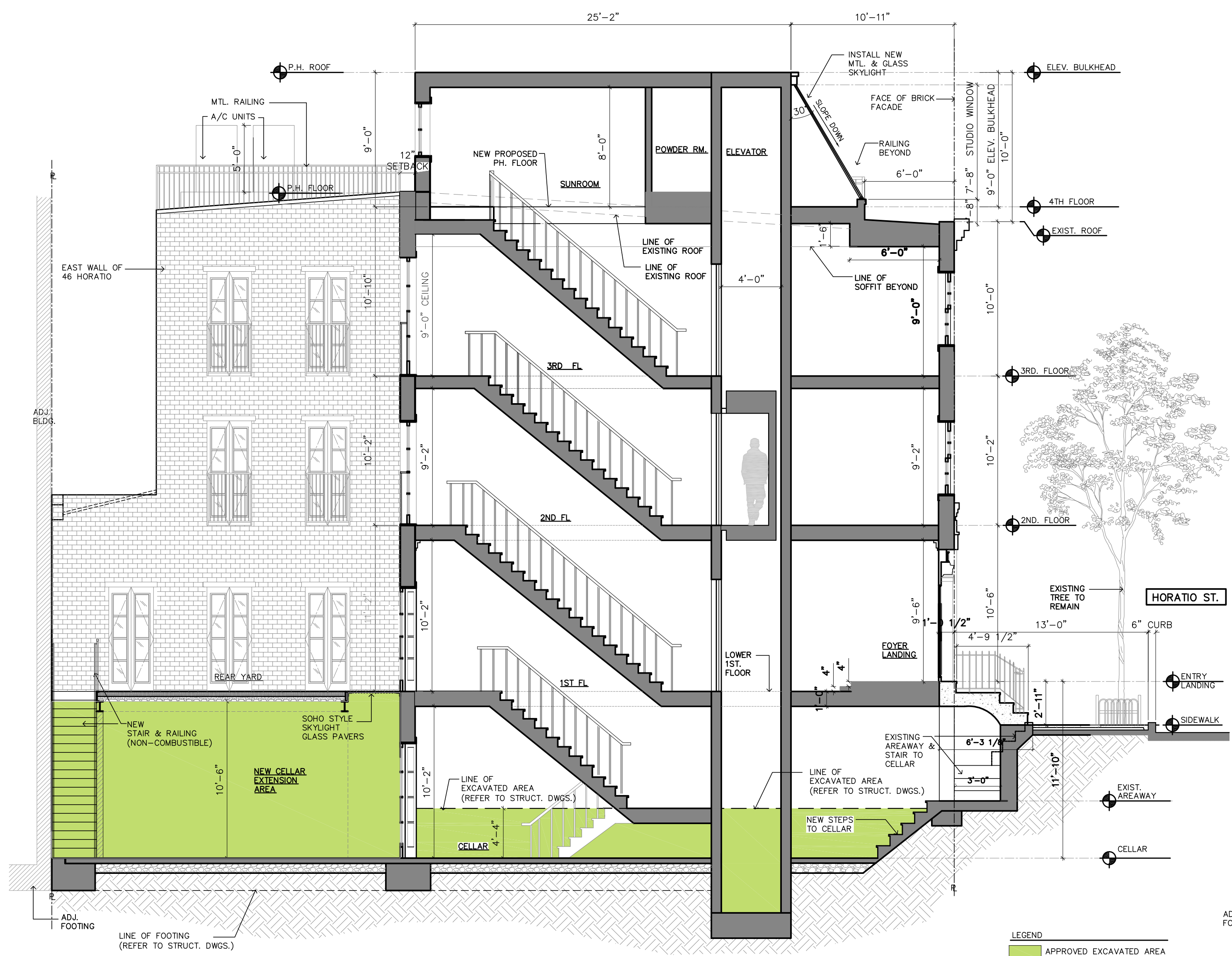
**BLOCK PLAN**  
NOT TO SCALE

**44 & 46 HORATIO STREET, NEW YORK, N.Y. 10014**

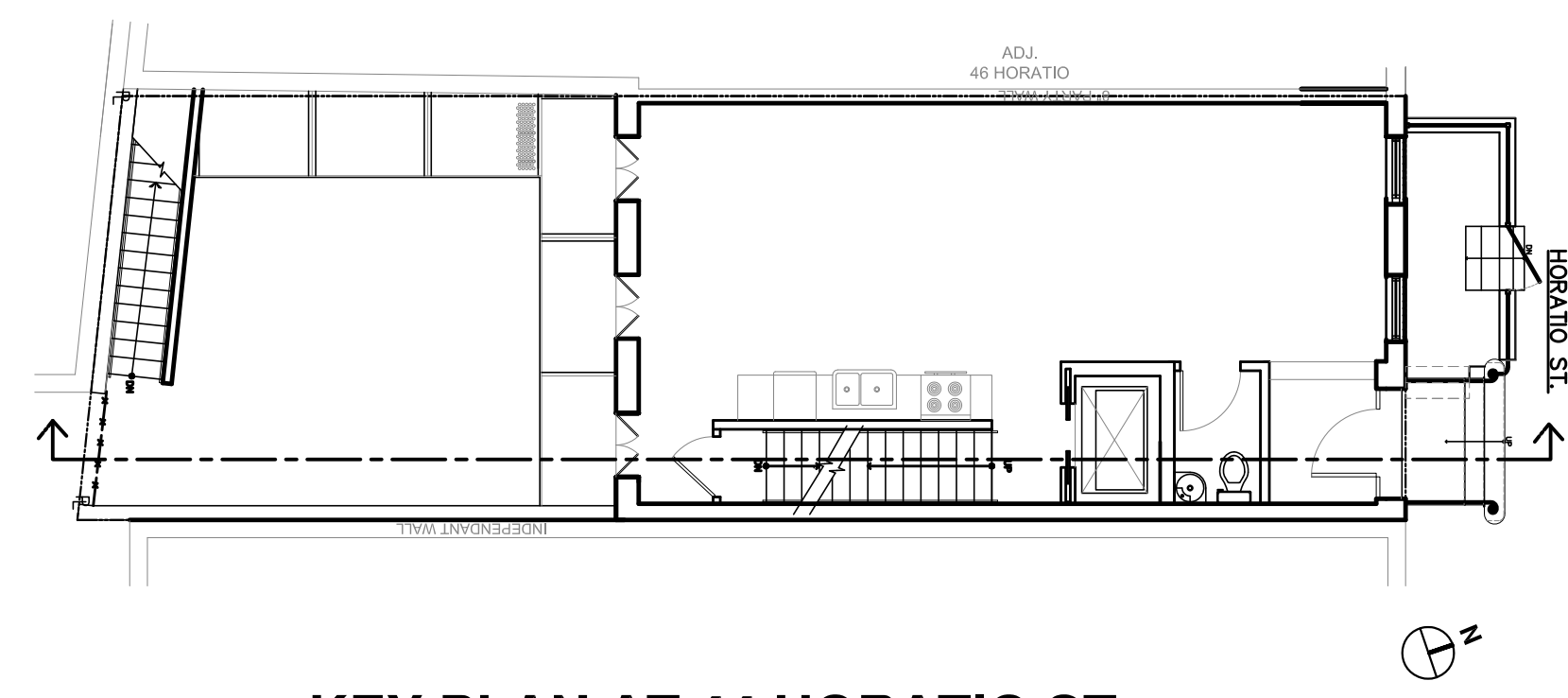
MATT MARKOWITZ  
ARCHITECT. P.C.  
501 5TH AVE  
SUITE 910  
NEW YORK, NY 10017  
212.692.0484

DATE: 10.31.2016

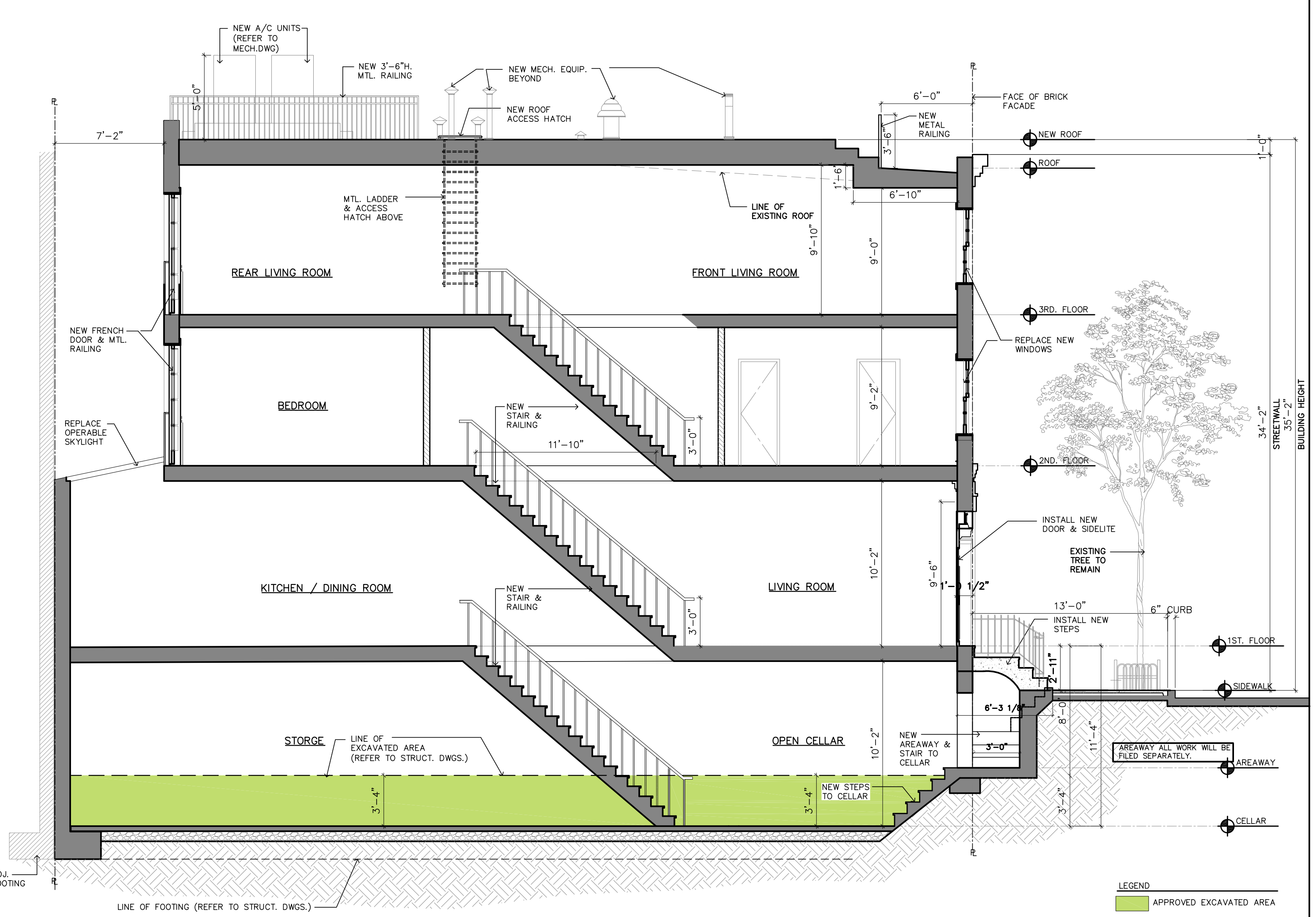
**LPC-  
SC1**



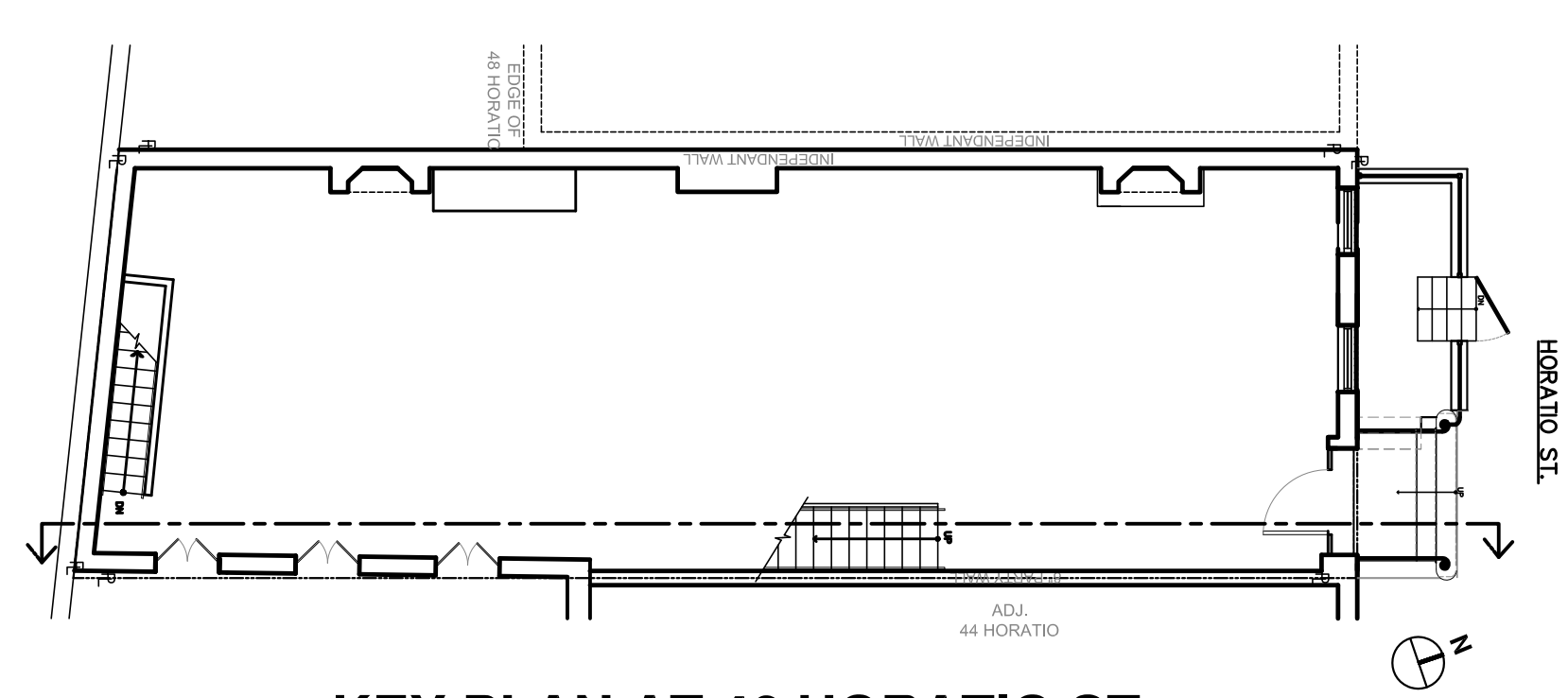
**A** APPROVED SECTION AT 44 HORATIO ST.  
NOT TO SCALE



**KEY PLAN AT 44 HORATIO ST.**  
NOT TO SCALE



**B** APPROVED SECTION AT 46 HORATIO ST.  
NOT TO SCALE



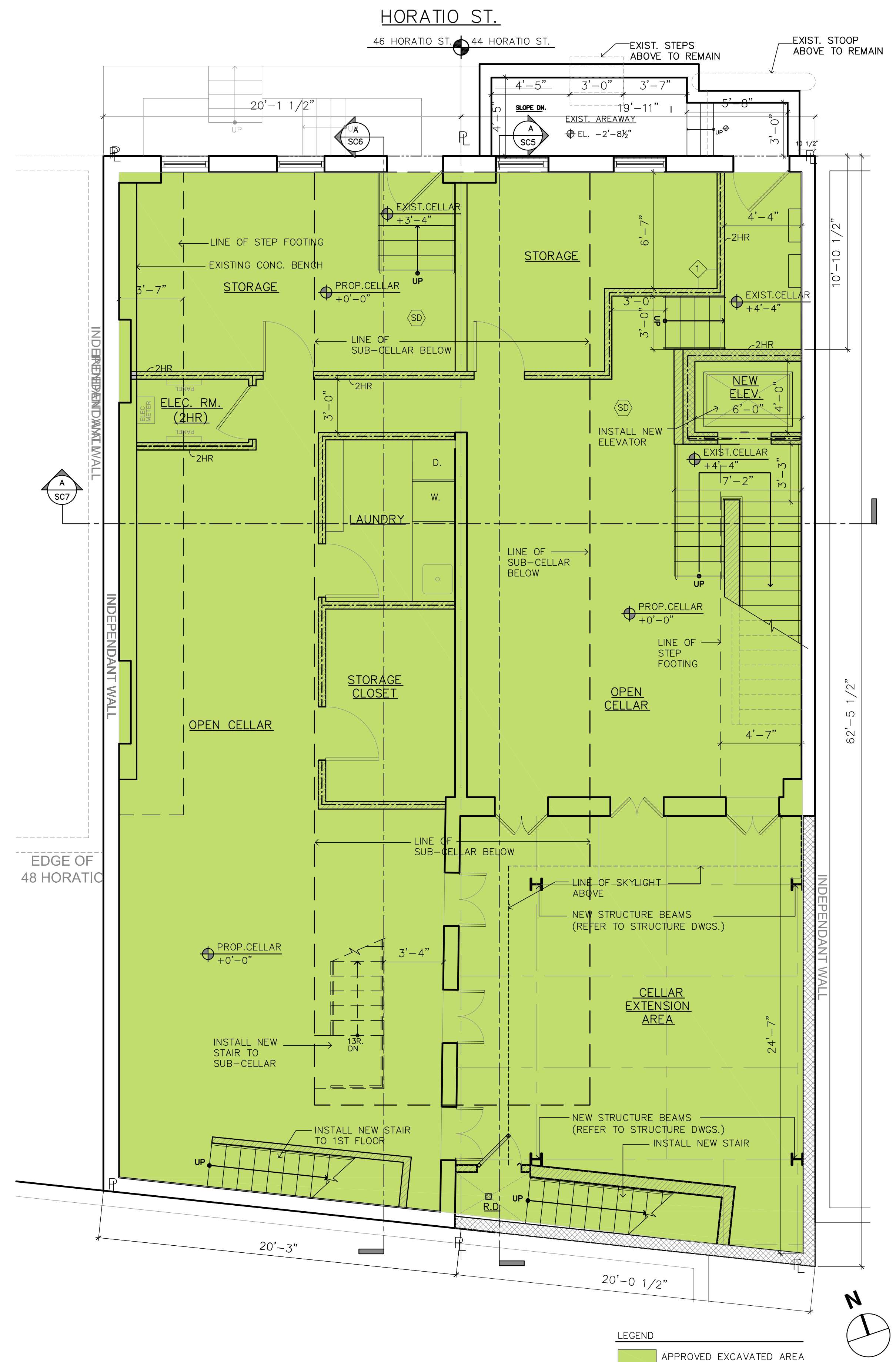
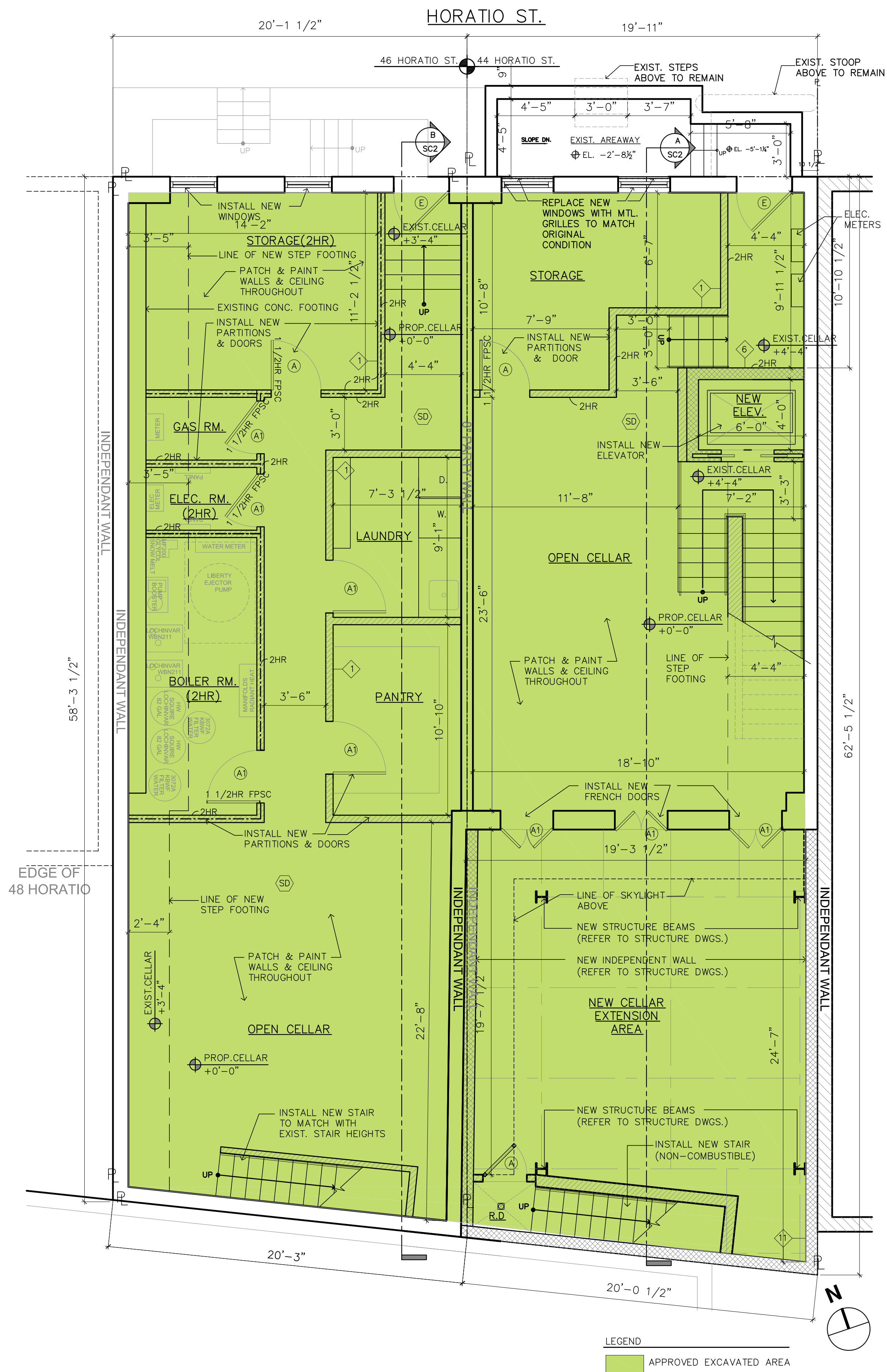
**KEY PLAN AT 46 HORATIO ST.**  
NOT TO SCALE

44 & 46 HORATIO STREET, NEW YORK, N.Y. 10014

MATT MARKOWITZ  
ARCHITECT. P.C.  
501 5TH AVE  
SUITE 910  
NEW YORK, NY 10017  
212.692.0484

DATE: 10.31.2016

**LPC-  
SC2**

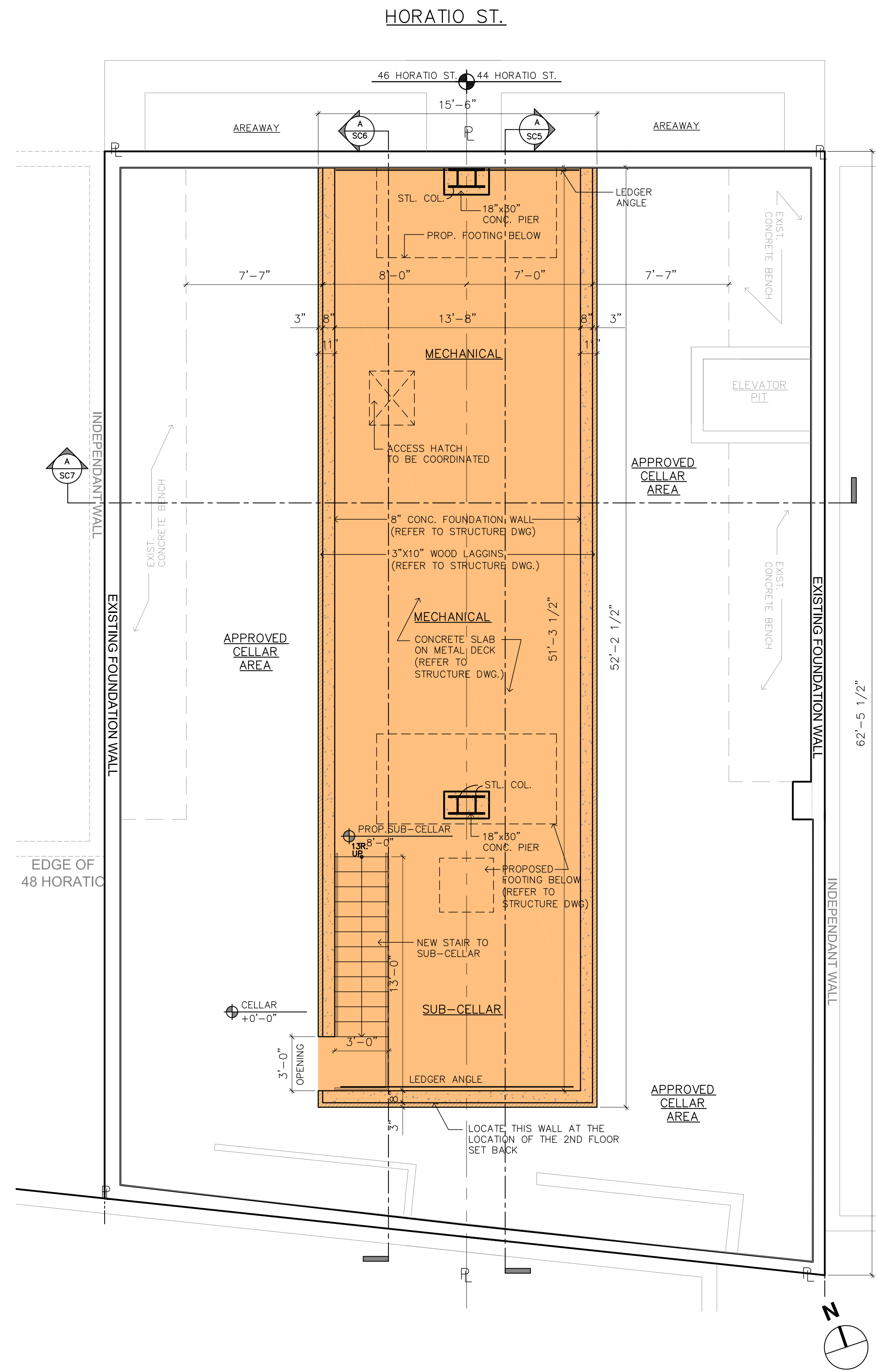


44 & 46 HORATIO STREET, NEW YORK, N.Y. 10014

MATT MARKOWITZ  
 ARCHITECT. P.C.  
 501 5TH AVE  
 SUITE 910  
 NEW YORK, NY 10017  
 212.692.0484

DATE: 10.31.2016

**LPC-SC3**



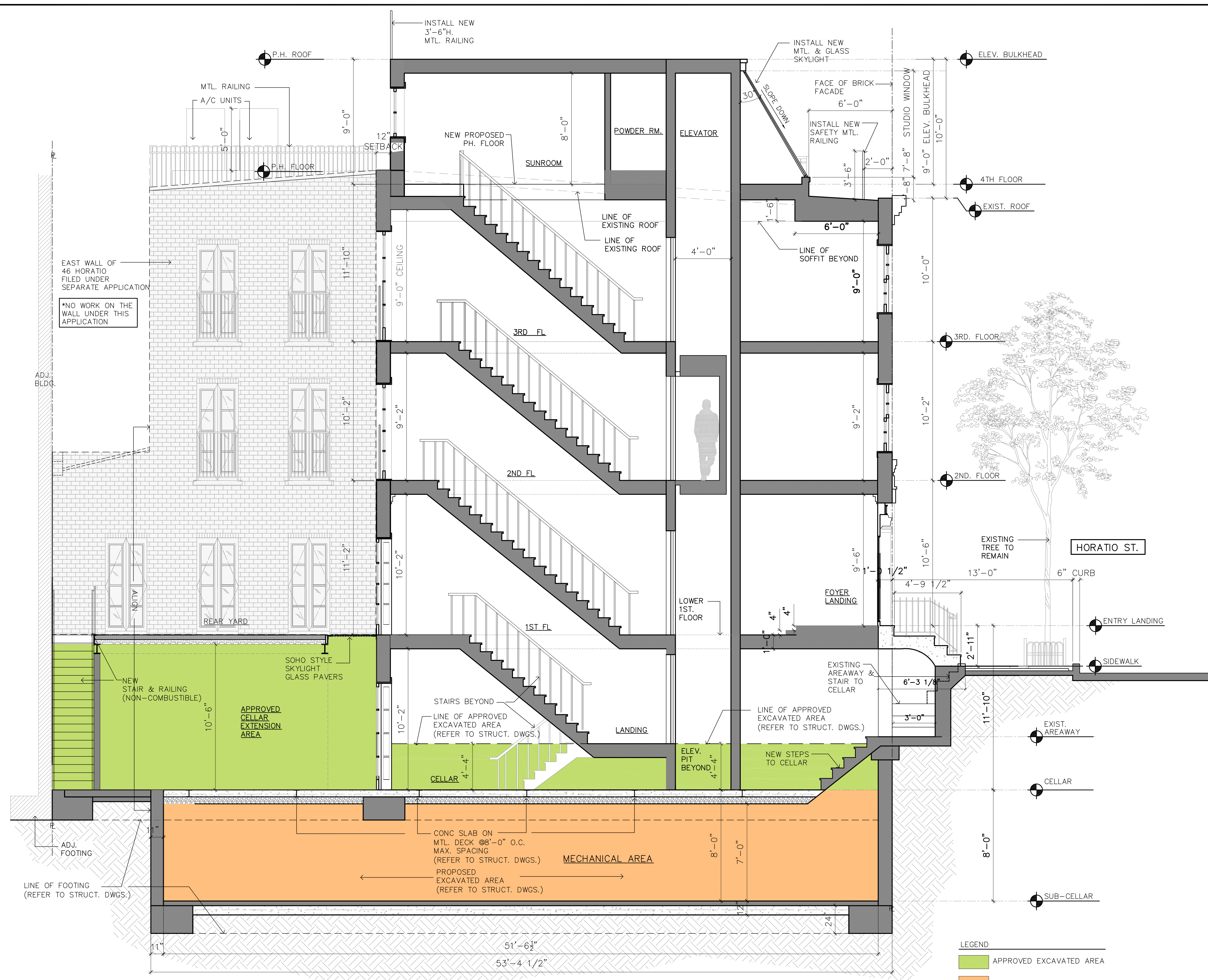
**PROPOSED SUB-CELLAR PLAN**  
 SCALE : 1/4" = 1'-0"

44 & 46 HORATIO STREET , NEW YORK., N.Y.10014

MATT MARKOWITZ  
 ARCHITECT. P.C.  
 501 5TH AVE  
 SUITE 910  
 NEW YORK, NY 10017  
 212.692.0484

DATE: 10.31.2016

**LPC-  
 SC4**



**A** PROPOSED NORTH/SOUTH SECTION AT 44 HORATIO ST.  
NOT TO SCALE

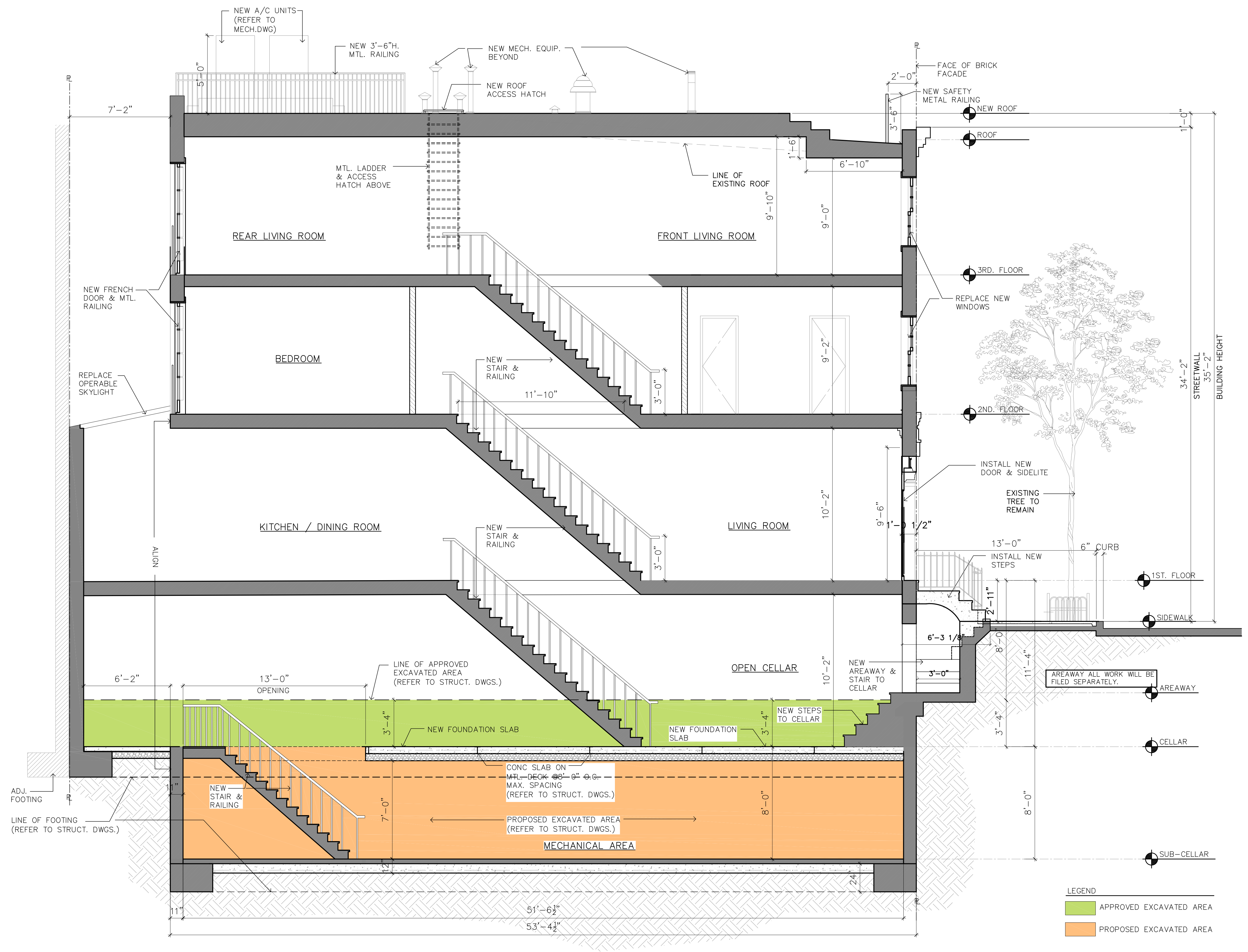
LEGEND  
 APPROVED EXCAVATED AREA  
 PROPOSED EXCAVATED AREA

44 & 46 HORATIO STREET, NEW YORK, N.Y. 10014

MATT MARKOWITZ ARCHITECT. P.C.  
 501 5TH AVE SUITE 910  
 NEW YORK, NY 10017  
 212.692.0484

DATE: 10.31.2016

**LPC-SC5**



**A** **PROPOSED NORTH/SOUTH SECTION AT 46 HORATIO ST.**  
NOT TO SCALE

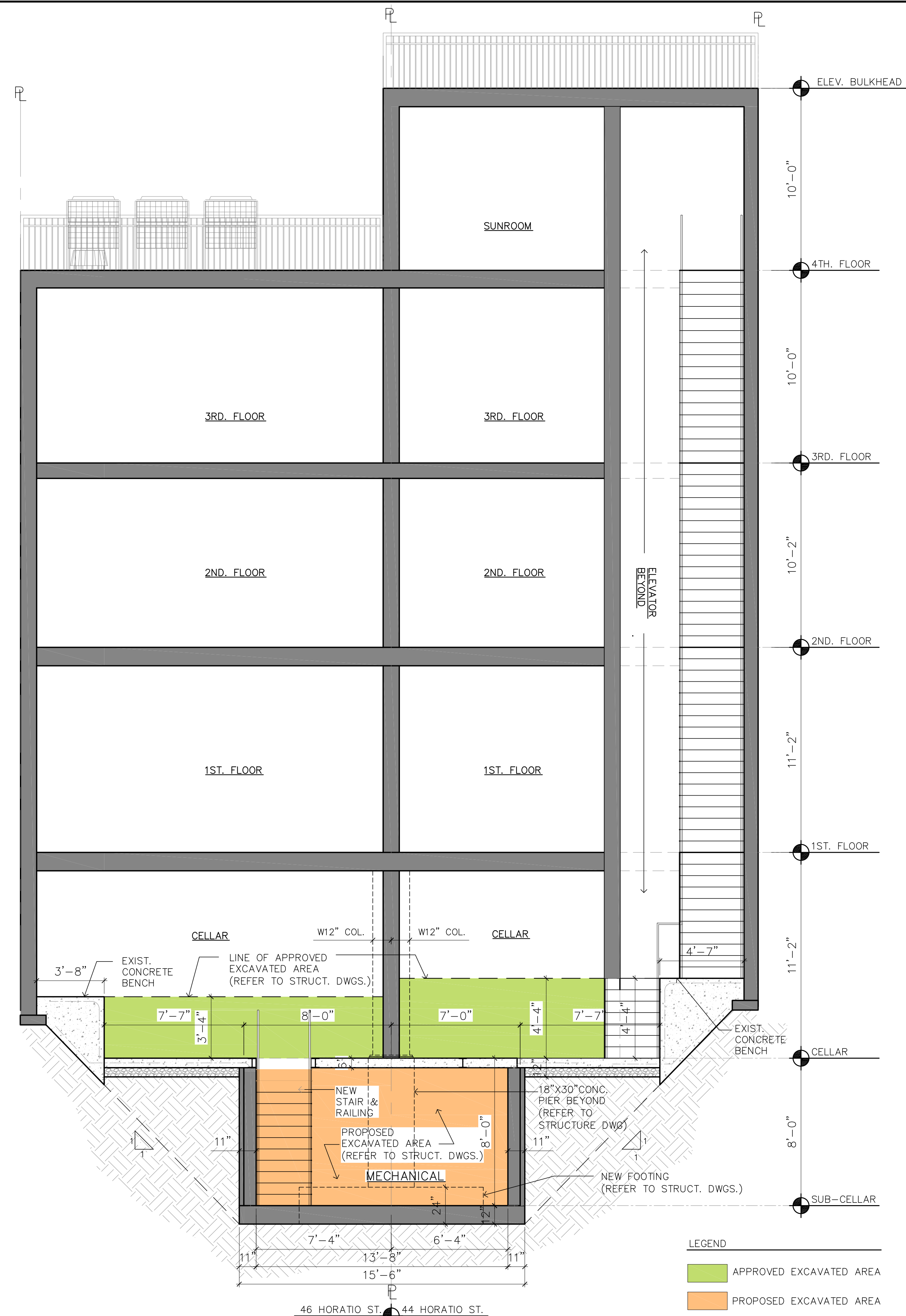
LEGEND  
 APPROVED EXCAVATED AREA  
 PROPOSED EXCAVATED AREA

44 & 46 HORATIO STREET, NEW YORK, N.Y. 10014

MATT MARKOWITZ ARCHITECT. P.C.  
 501 5TH AVE SUITE 910  
 NEW YORK, NY 10017  
 212.692.0484

DATE: 10.31.2016

**LPC-SC6**



**A**

**PROPOSED EAST/WEST BUILDING SECTION**

NOT TO SCALE

44 & 46 HORATIO STREET , NEW YORK., N.Y.10014

MATT MARKOWITZ ARCHITECT. P.C.

501 5TH AVE SUITE 910 NEW YORK, NY 10017

212.692.0484

DATE: 10.31.2016

**LPC-SC7**