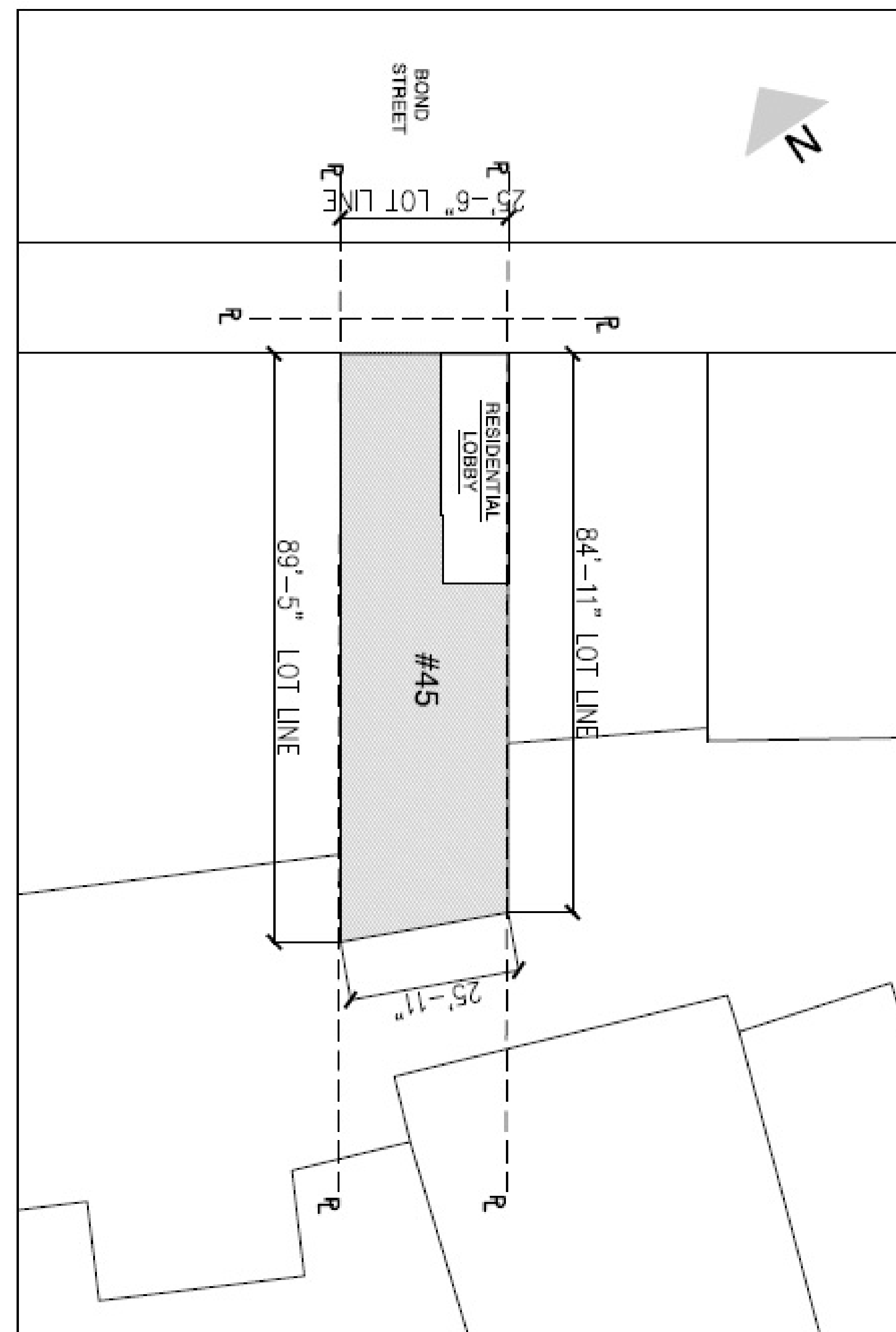
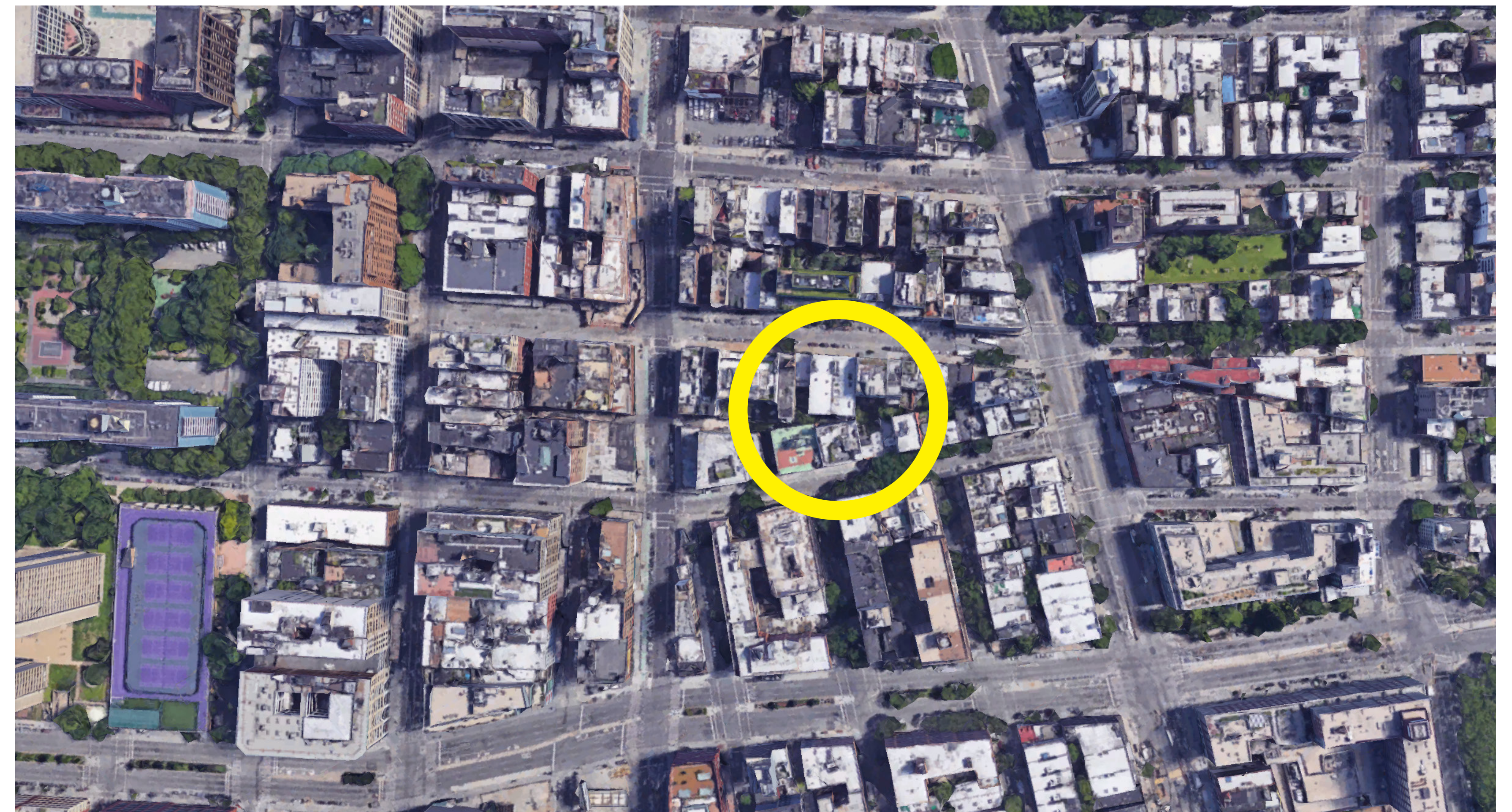


45 BOND STREET



LOT INFORMATION



SITE LOCATION



STREET VIEW - SOUTH



BUILDING AND CONTEXT



AREA OF WORK - EXISTING STORE FRONT



EXISTING FACADE



PROPOSED FACADE



- WIDE FLANGE
VERITCAL ARCHITECTURE
- CLEAR GLASS
- FLAT STEEL BAR
- PLYWOOD INFILL PANEL



- WIDE FLANGE
VERITCAL ARCHITECTURE
- CLEAR GLASS TRANSOM
- CLEAR GLASS STOREFRONT
- WIDE FLANGE HEADER



- TUBE STEEL
VERITCAL ARCHITECTURE
- CLEAR GLASS TRANSOM
- WIDE FLANGE HEADER
- EXISITING NUMBER / SIGNAGE
- CLEAR GLASS STOREFRONT / DOOR

45 BOND STREET EXISTING STOREFRONT DETAILING



- GLASS TRANSOM
- TALL GLASS VERTICAL PANES
- TUBE STEEL ASSEMBLY
- FLAT BAR MULLIONS
- LOWER STEEL INFILL



- TALL GLASS VERTICAL PANES
- TUBE STEEL ASSEMBLY
- LOWER STEEL INFILL
- TUBE STEEL BASE DETAIL



- GLASS TRANSOM
- TUBE STEEL ASSEMBLY
- REFLECTIVE GLASS PANES
- FLAT BAR MULLIONS
REFLECTIVE GLASS PANES
- INTEGRATED WITH EXISTING
ARCHITECTURE

35 BOND STREET EXISTING DETAILING



- GLASS STOREFRONT
- BRONZE DETIALING
- LOWER BRONZE INFILL
- WIDE FLANGE ASSEMBLIES
- MODERN ARCHITECTURAL DETIALING



- GLASS STOREFRONT
- WIDE FLANGE ASSEMBLIES
- MODERN ARCHITECTURAL DETIALING



- STONE FACADE
- BRONZE STOREFRONT
- MODERN ARCHITECTURAL DETIALING

25 BOND STREET EXISTING DETAILING

GJELINA

322 SUNSET AVE
VENICE, CA
90291

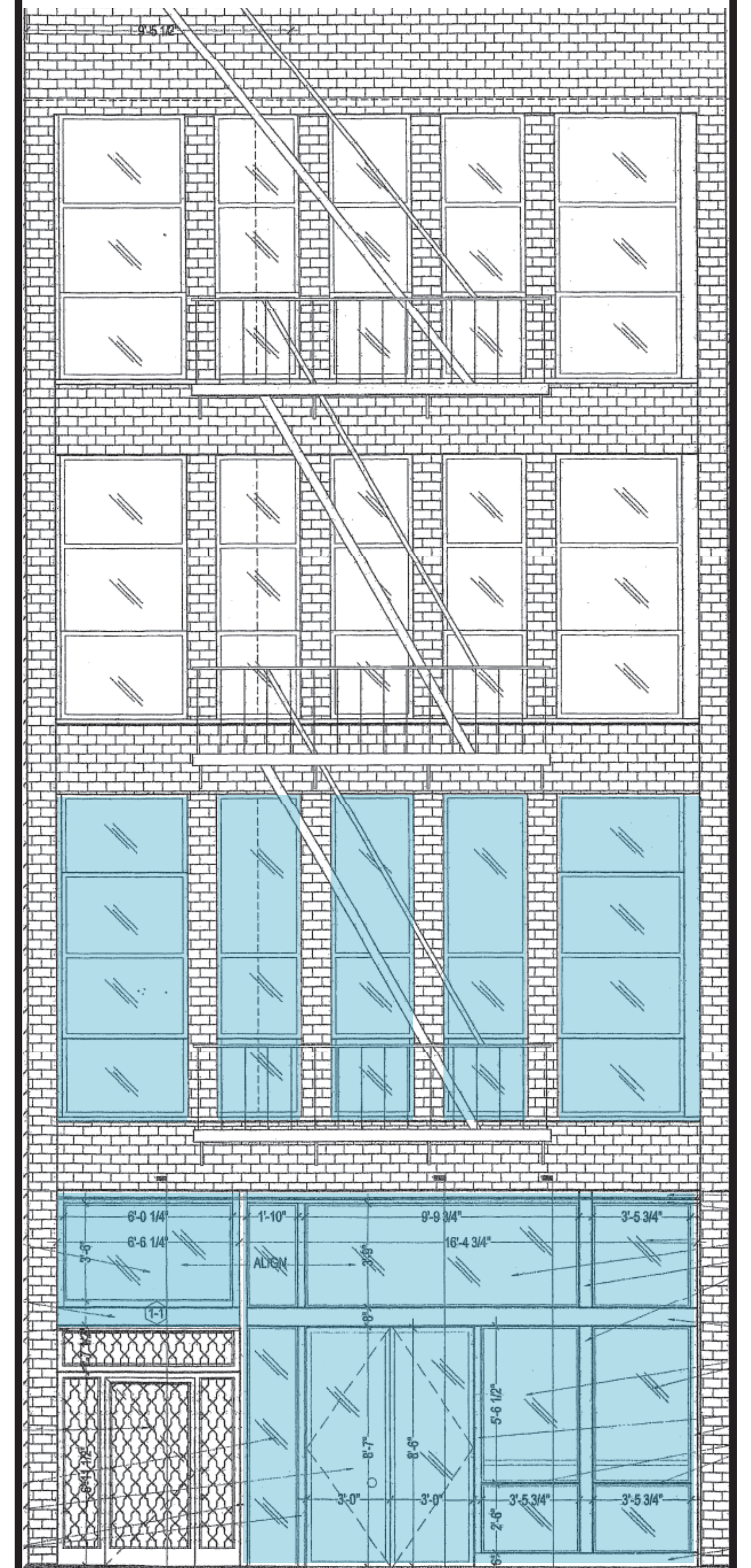
**BOND STREET PRECEDENT
STEEL STOREFRONT CONSTRUCTION**

45 BOND STREET
NEW YORK, NY
10012



PROPOSED ELEVATION

REFER TO SHEET A-200 FOR NEW
PROPOSED LIGHTING AND SIGNAGE



INTERVENTION AREA

GJELINA

322 SUNSET AVE
VENICE, CA
90291

PROPOSED ELEVATION / DEMO ELEVATION

45 BOND STREET
NEW YORK, NY
10012



GJELINA

322 SUNSET AVE
VENICE, CA
90291

STORE FRONT ELEVATION

45 BOND STREET
NEW YORK, NY
10012

