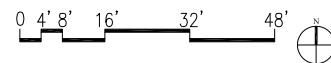


BLEECKER STREET



PROJECT LOCATION/ROOF PLAN



59 BLEECKER STREET

Submission of Revisions to the
New York City Landmarks Preservation Commission

15 August 2017



CURRENTLY PROPOSED DESIGN



PREVIOUSLY APPROVED DESIGN



CURRENT CONDITION

REMAINING PORTION OF TERRA COTTA WALL BEHIND METAL PANEL

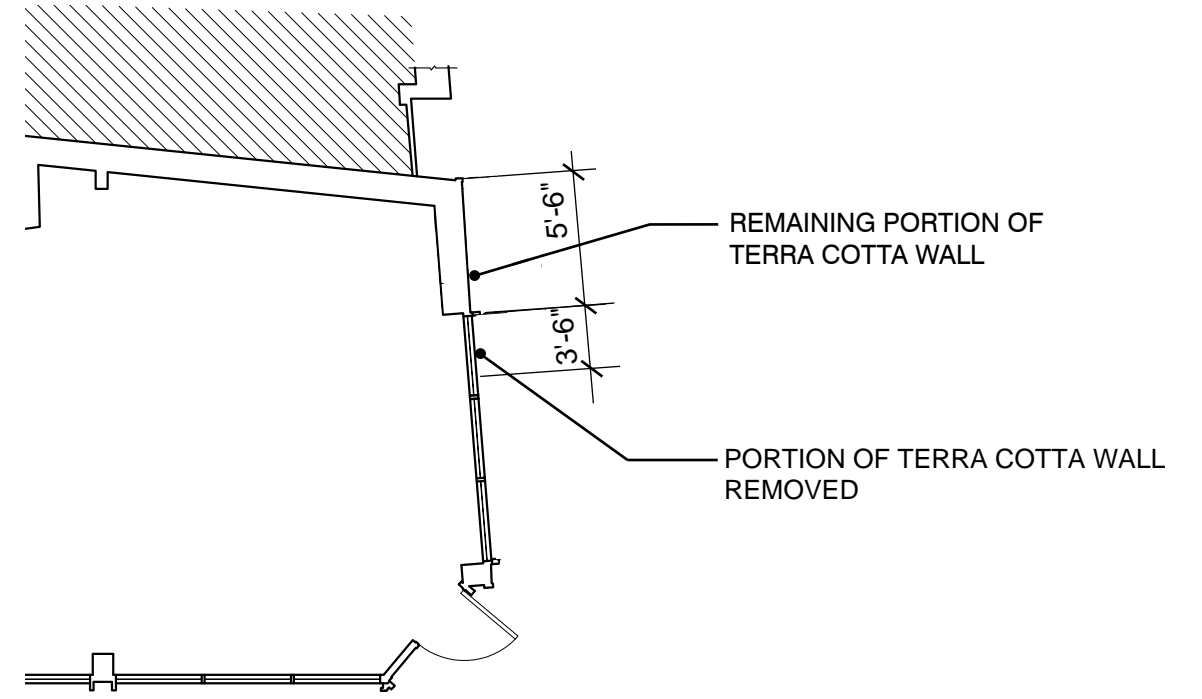
PIER ELEMENTS AT PARAPETS ALIGNED IN BOTH PHOTOS

CURRENT EDGE OF TERRA COTTA WALL

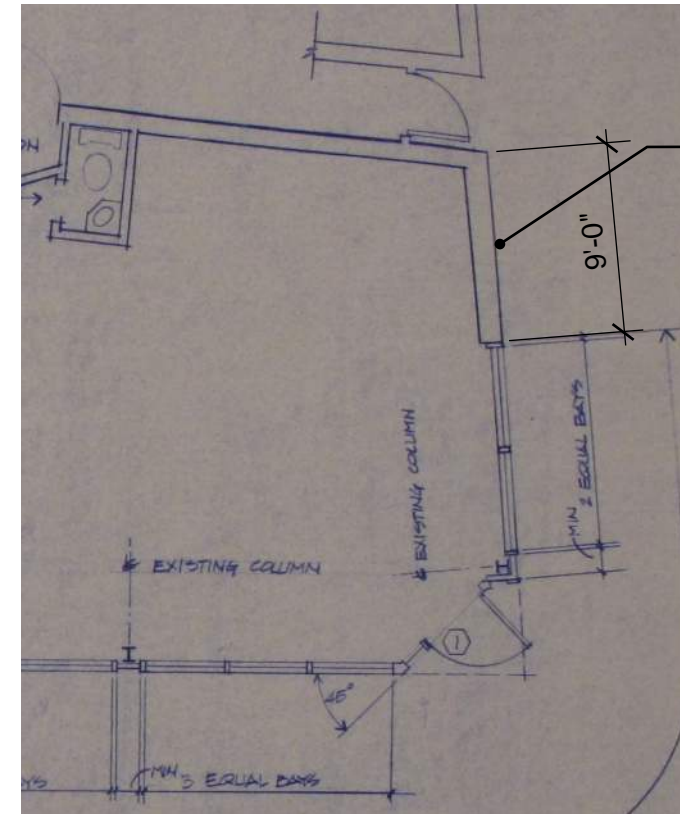


ORIGINAL CONDITION (NYC TAX PHOTO 1940)

PORTION OF TERRA COTTA WALL REMOVED WHEN THE CURRENT STOREFRONT WAS INSTALLED

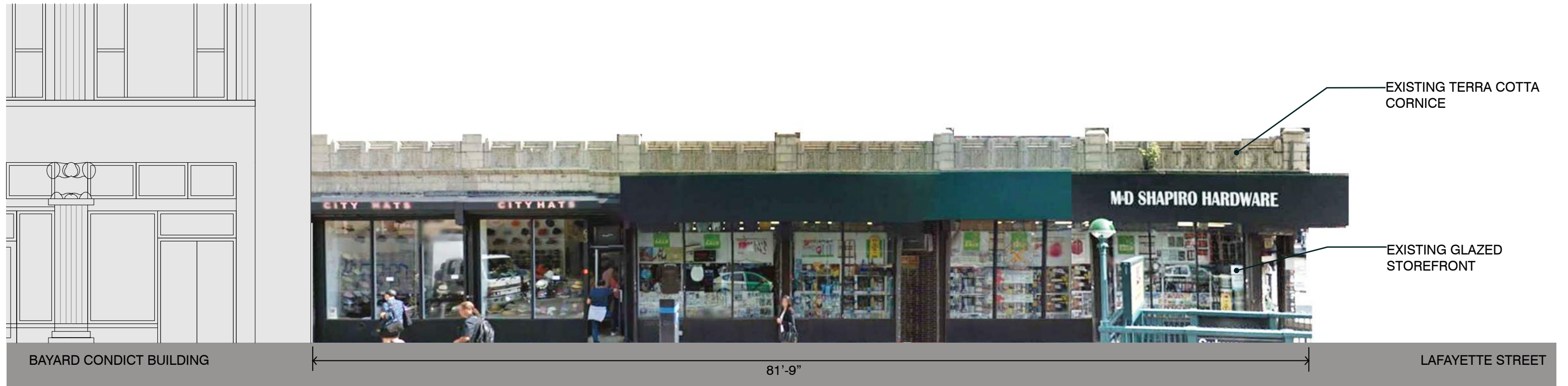


RECENT SURVEY OF CURRENT CONDITIONS

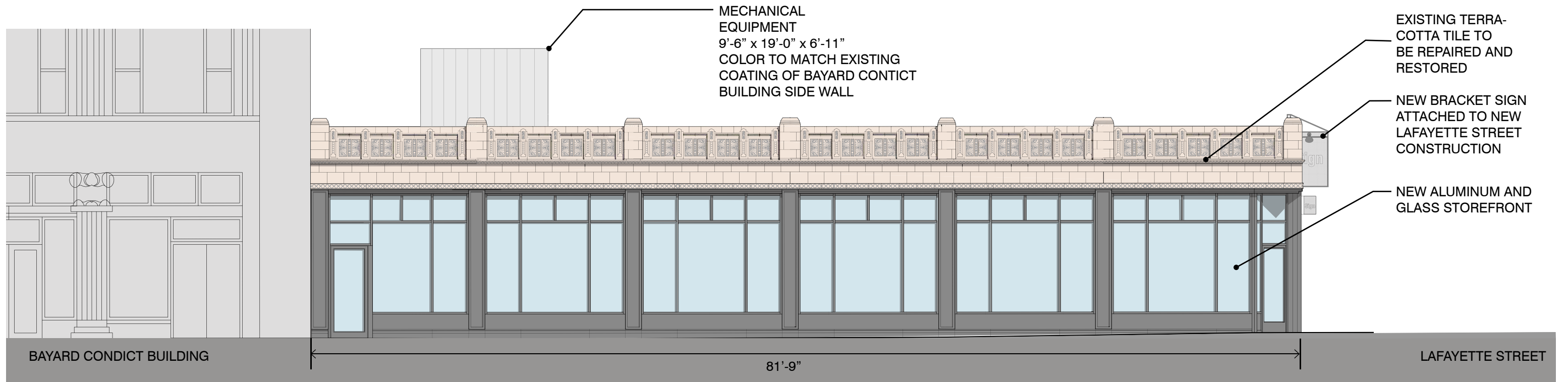


ORIGINAL CONDITION (DRAWING BY EDGAR TAFEL, ARCHITECT, 1984)

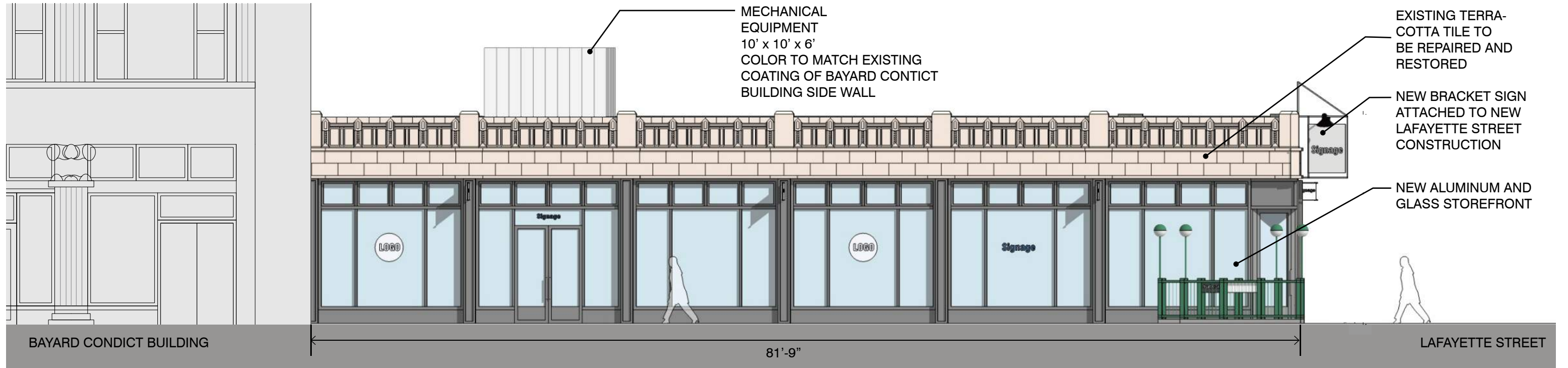
CHANGES ALREADY MADE TO ORIGINAL TERRA COTTA WALL



EXISTING BLEECKER STREET ELEVATION

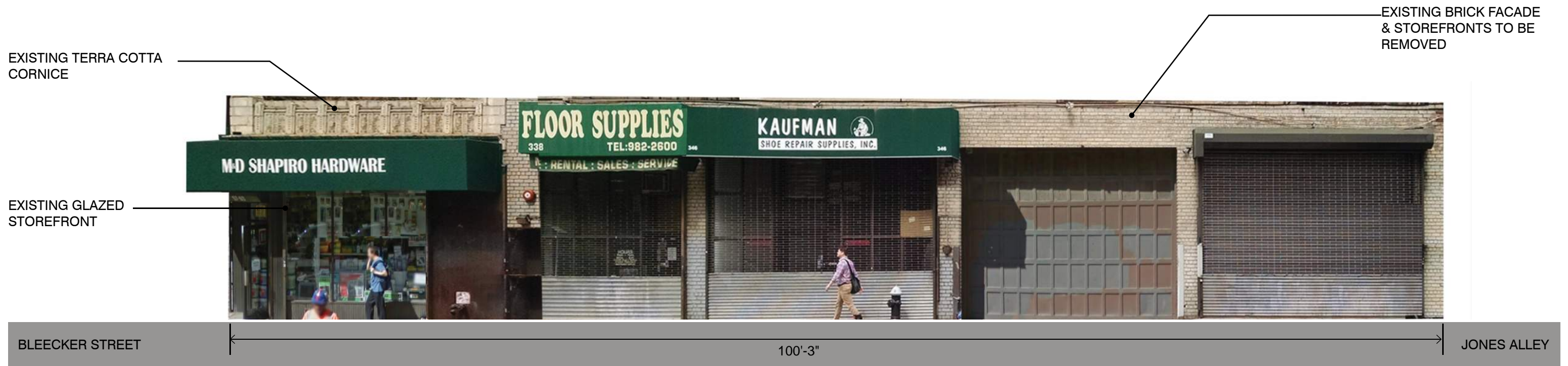


CURRENTLY PROPOSED ELEVATION

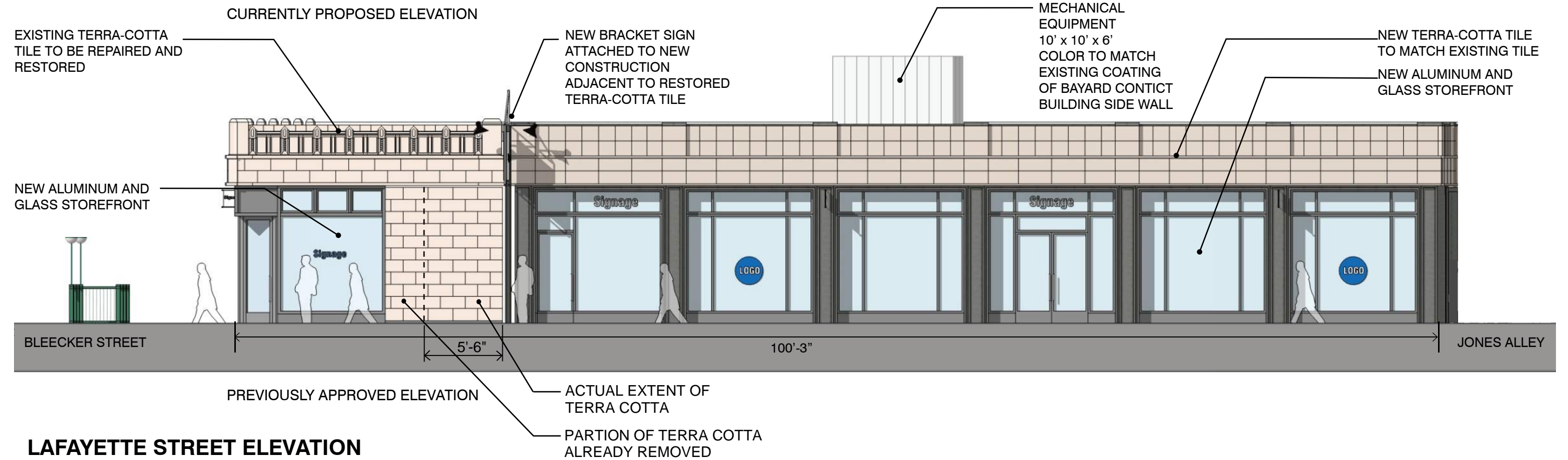
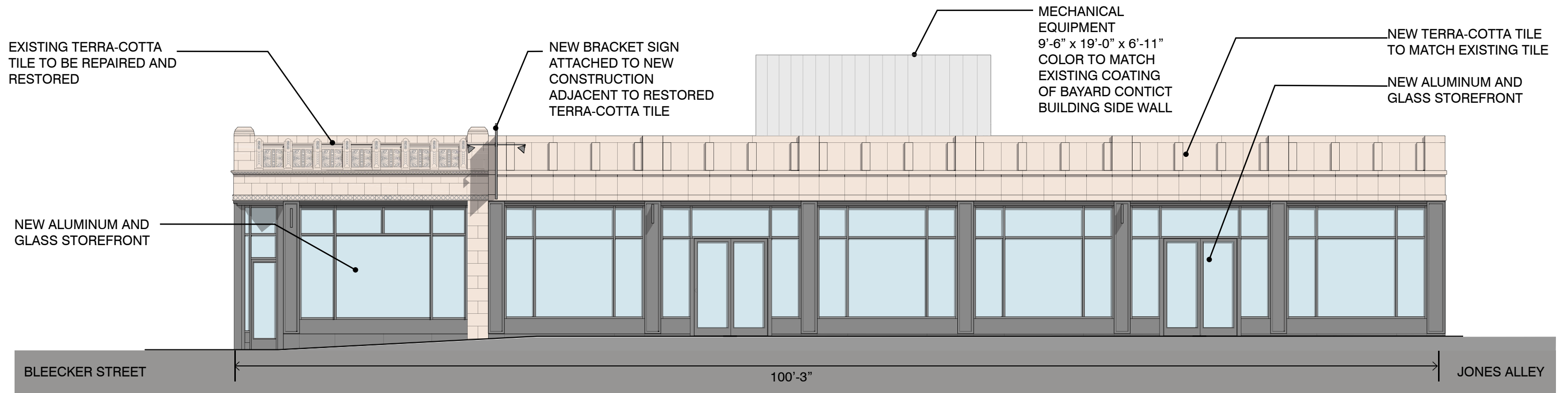


PREVIOUSLY APPROVED ELEVATION

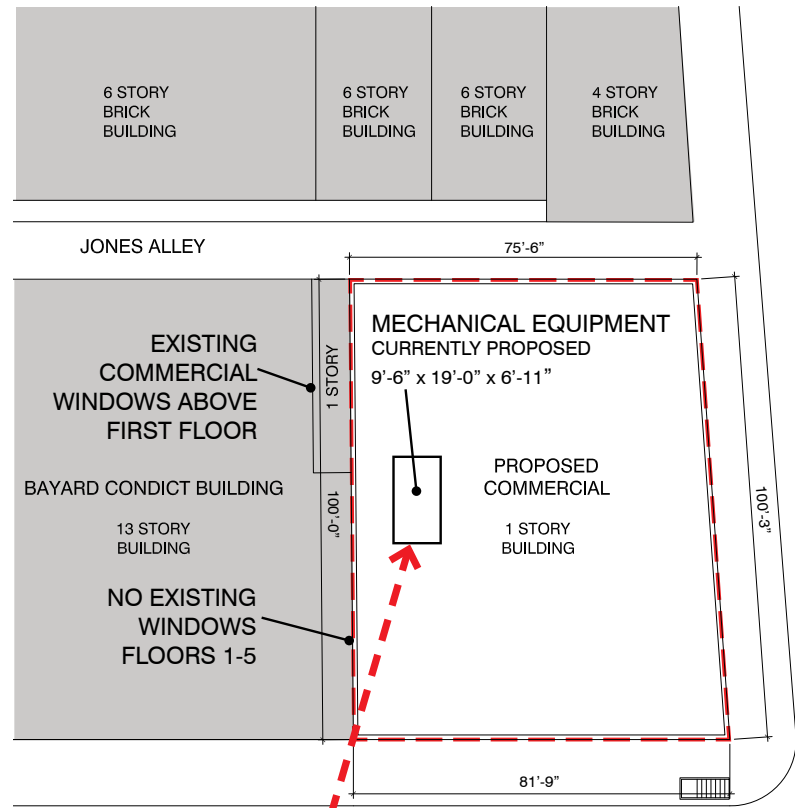
BLEECKER STREET ELEVATION



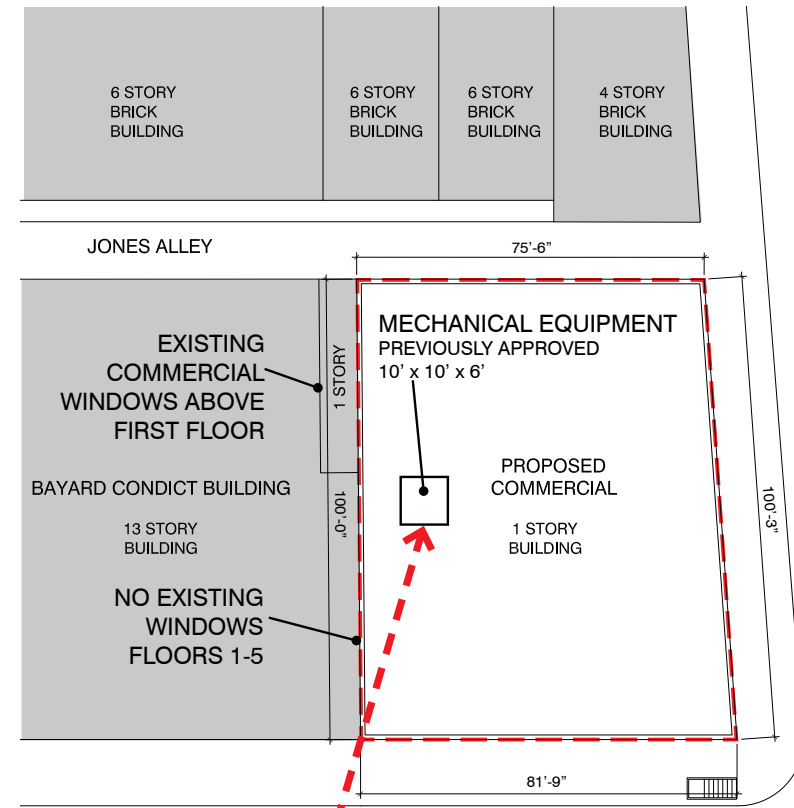
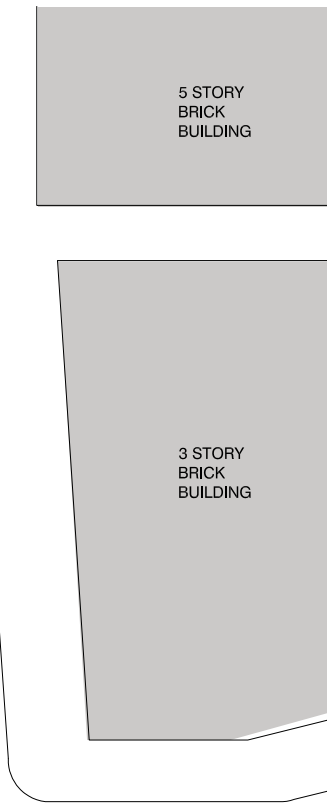
EXISTING LAFAYETTE STREET ELEVATION



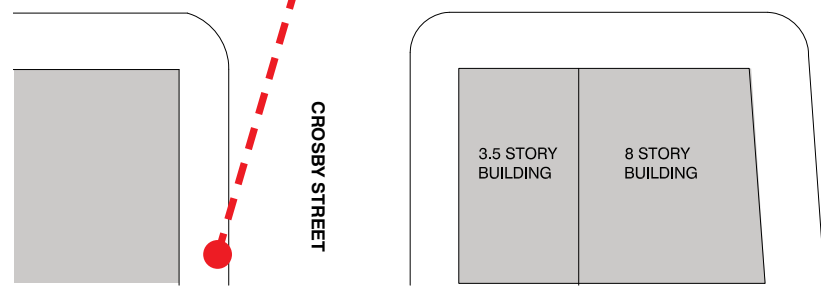
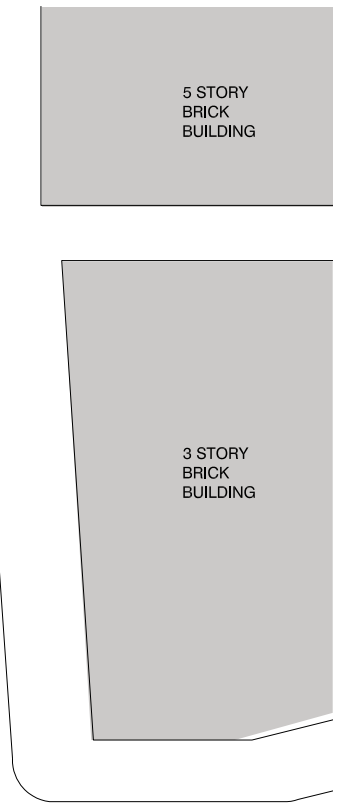
LAFAYETTE STREET ELEVATION



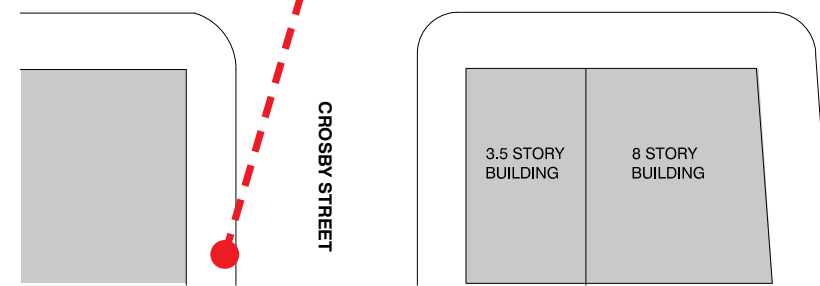
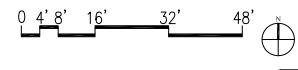
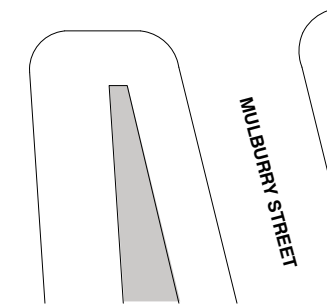
LAFAYETTE STREET



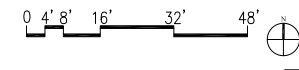
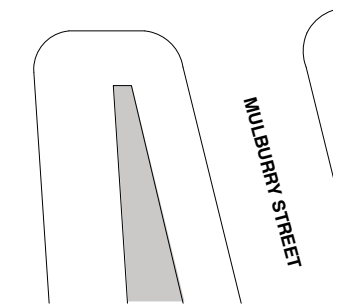
LAFAYETTE STREET



1A



1B



1. CURRENTLY PROPOSED VIEW NORTH FROM CROSBY STREET.

1. PREVIOUSLY APPROVED VIEW NORTH FROM CROSBY STREET.

PROPOSED ROOF PLAN SHOWING MECHANICAL EQUIPMENT AND MOCK-UP SIGHT LINE FROM FROM CROSBY STREET

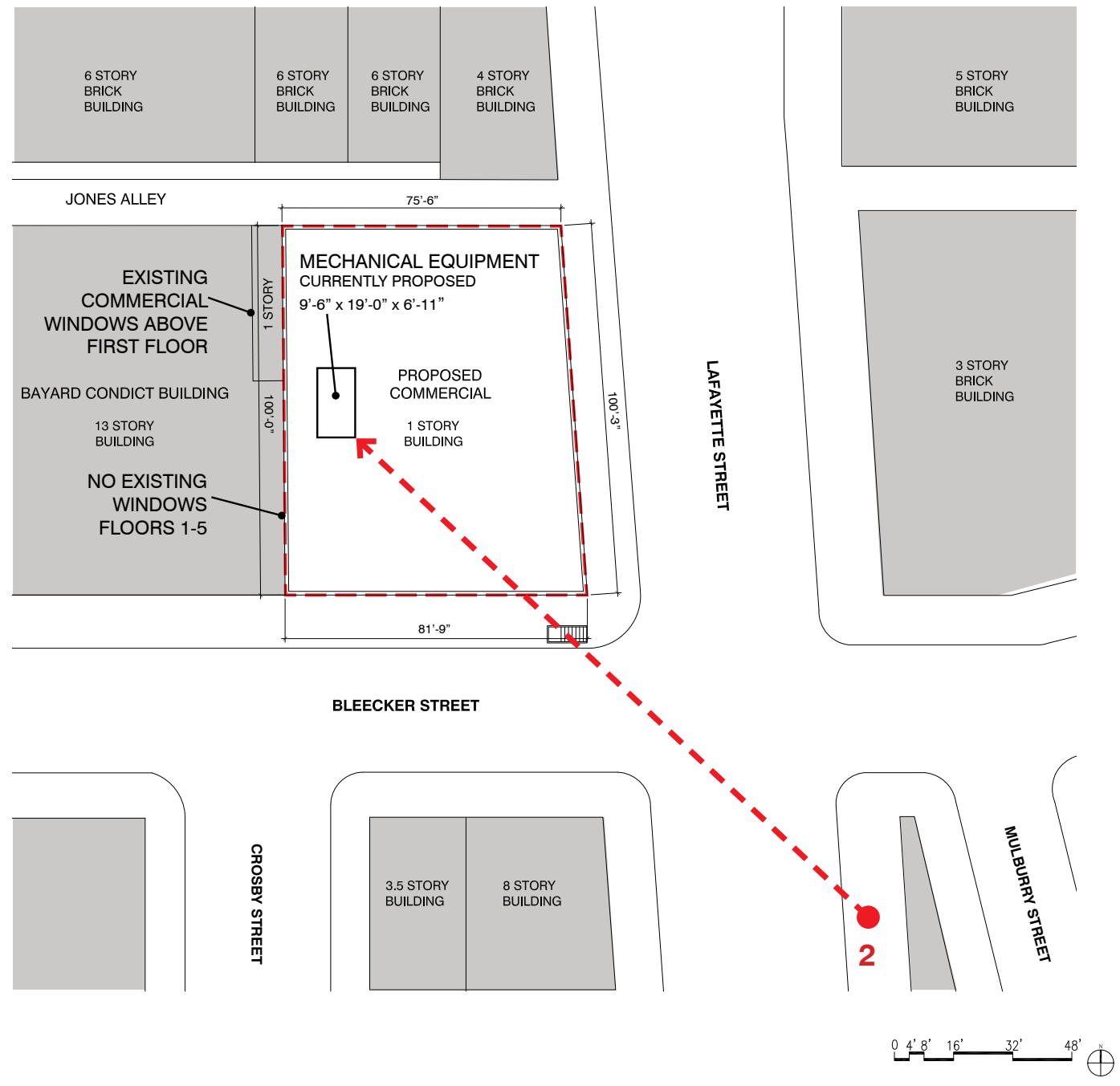


1A. CURRENTLY PROPOSED VIEW NORTH FROM CROSBY STREET.
MECHANICAL EQUIPMENT IS VISIBLE.

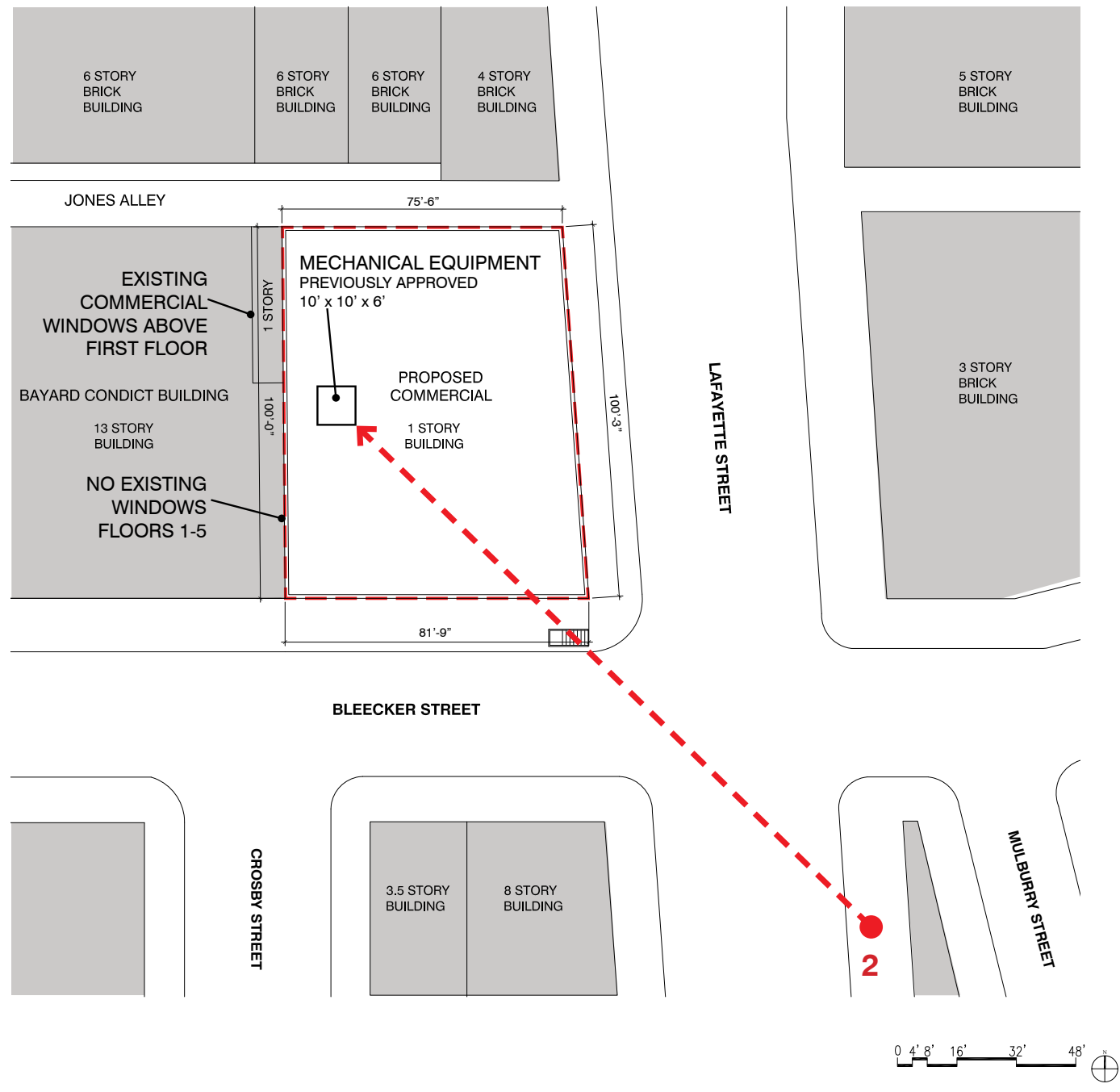


1B. PREVIOUSLY APPROVED VIEW NORTH FROM CROSBY STREET.
MECHANICAL EQUIPMENT IS VISIBLE.

VIEW OF MECHANICAL EQUIPMENT FROM CROSBY STREET



2A. CURRENTLY PROPOSED VIEW NORTH FROM LAFAYETTE STREET.



2B. PREVIOUSLY APPROVED VIEW NORTH FROM LAFAYETTE STREET.

PROPOSED ROOF PLAN SHOWING MECHANICAL EQUIPMENT AND MOCK-UP SIGHT LINE FROM LAFAYETTE STREET

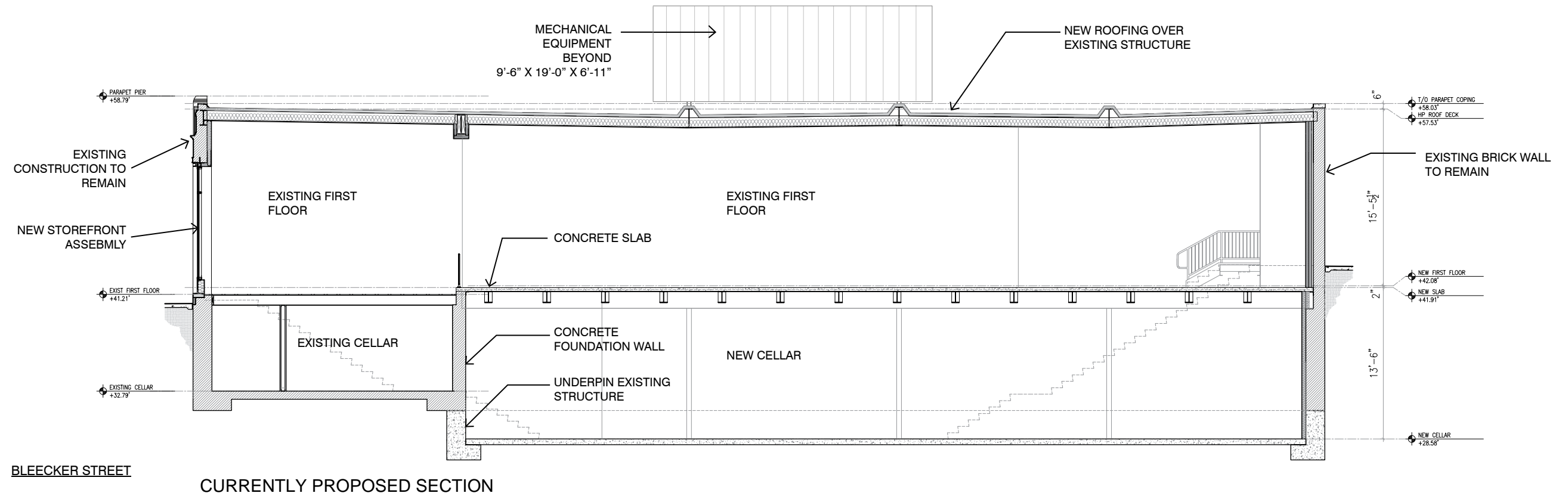


2A. CURRENTLY PROPOSED VIEW NORTH FROM LAFAYETTE ST.
MECHANICAL EQUIPMENT IS MINIMALLY VISIBLE.

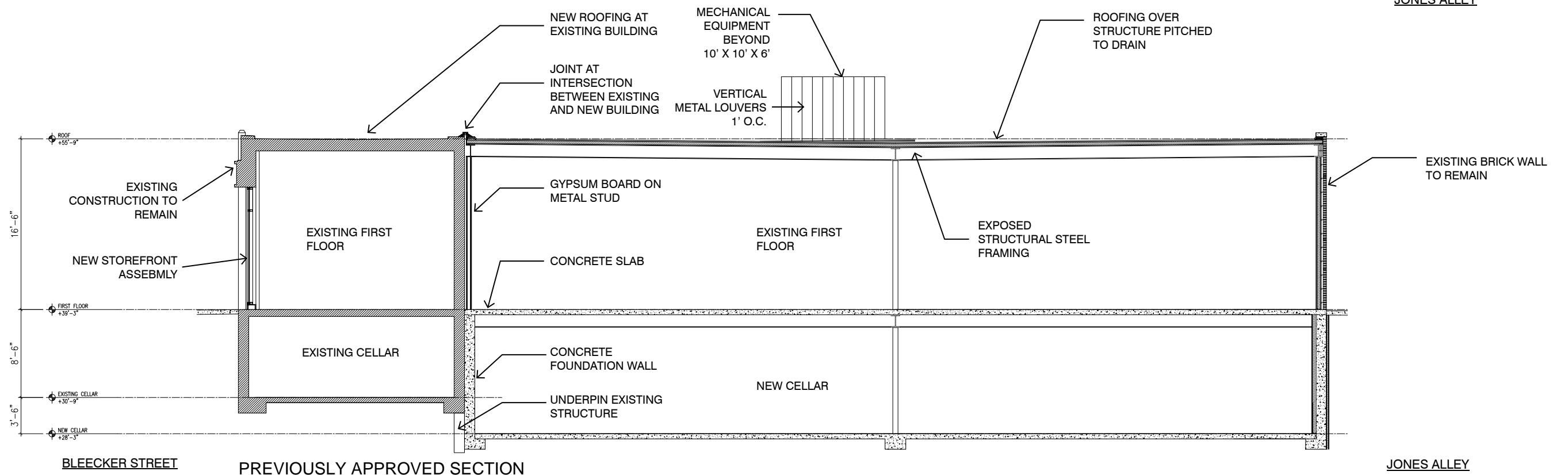


2B. PREVIOUS APPROVED VIEW NORTH FROM LAFAYETTE ST.
MECHANICAL EQUIPMENT IS MINIMALLY VISIBLE.

VIEW OF MECHANICAL EQUIPMENT FROM LAFAYETTE STREET



CURRENTLY PROPOSED SECTION



PREVIOUSLY APPROVED SECTION

BUILDING SECTIONS - PROPOSED & PREVIOUSLY APPROVED

