



# Landmarks Preservation Commission Presentation

9 May 2017

**710 Greenwich Street**  
Greenwich Village Historic District Extension

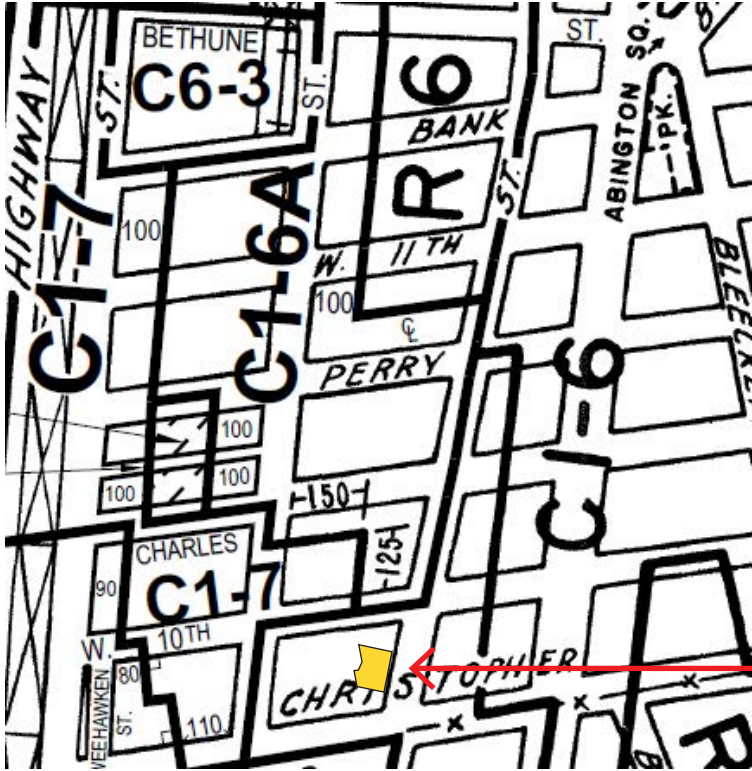


Ascher Davis Architects  
[www.ad-arch.com](http://www.ad-arch.com)

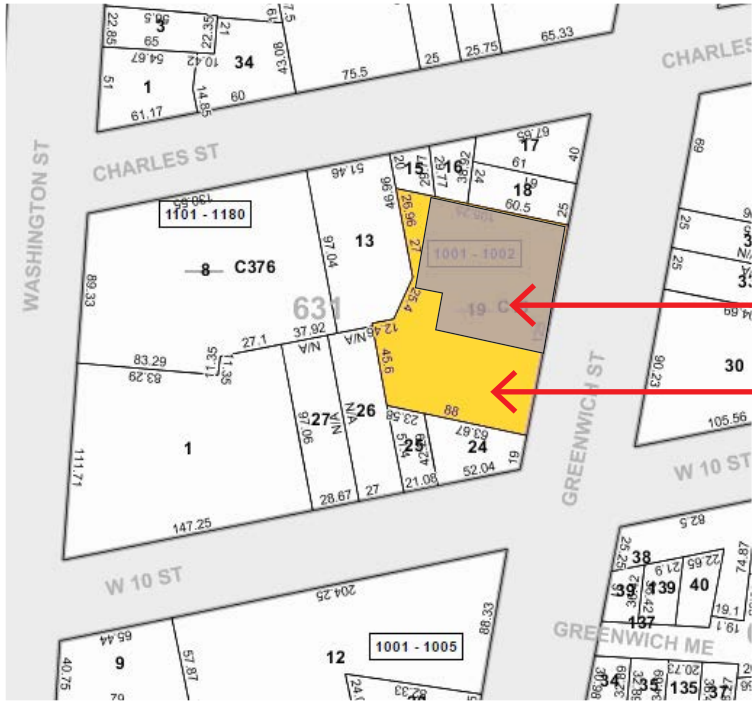




Greenwich Village Historic District and District Extension Boundaries  
Source: NYC LPC



Zoning Map: 12a  
Source: NYC DCP



NYC Digital Tax Map  
Block: 631 Lot: 7501  
Source: NYC DOF



Ascher Davis Architects  
www.ad-arch.com

710 Greenwich Street  
Greenwich Village His. District Ext.

Location Maps  
LPC Presentation / 9 May 2017







Tax Photo Ca. 1940  
Source: NYC DOF



Tax Photo Ca. 1980  
Source: NYC DOF

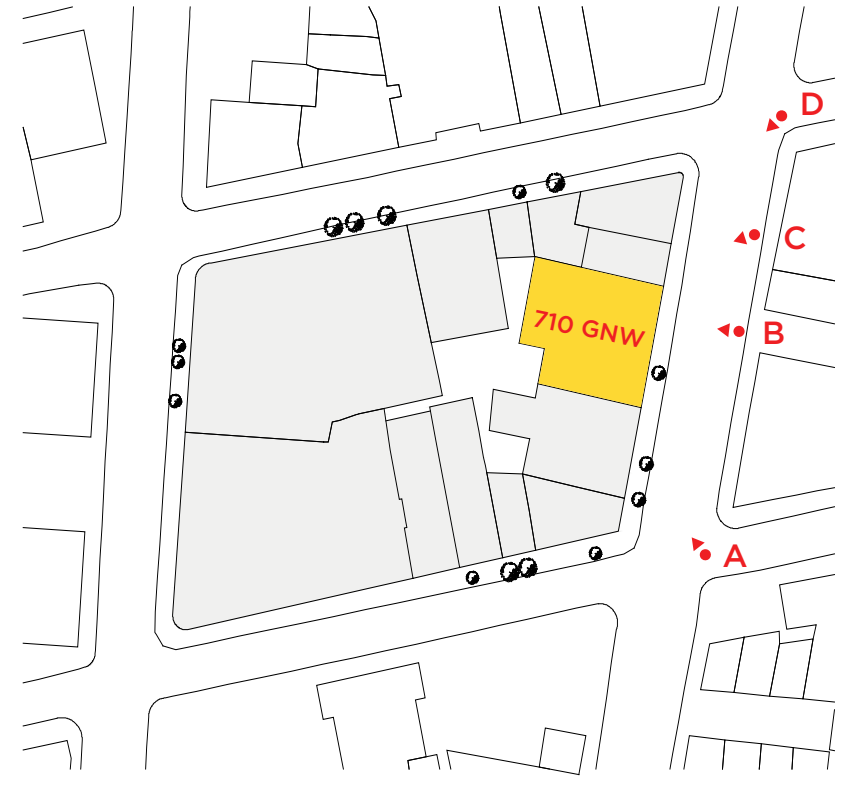


Ascher Davis Architects  
[www.ad-arch.com](http://www.ad-arch.com)

710 Greenwich Street  
Greenwich Village His. District Ext.

Tax Photographs  
LPC Presentation / 9 May 2017





Key Plan of Views







**West 10th Street & Greenwich Street - Greenwich Village His. Dist. Ext.**  
 Work storage warehouse  
 Source: [www.oldnyc.org](http://www.oldnyc.org)



**719 Greenwich Street - Greenwich Village Historic District, 1940s**  
 Warehouse building with loading docks  
 Source: NYPL Digital Collection

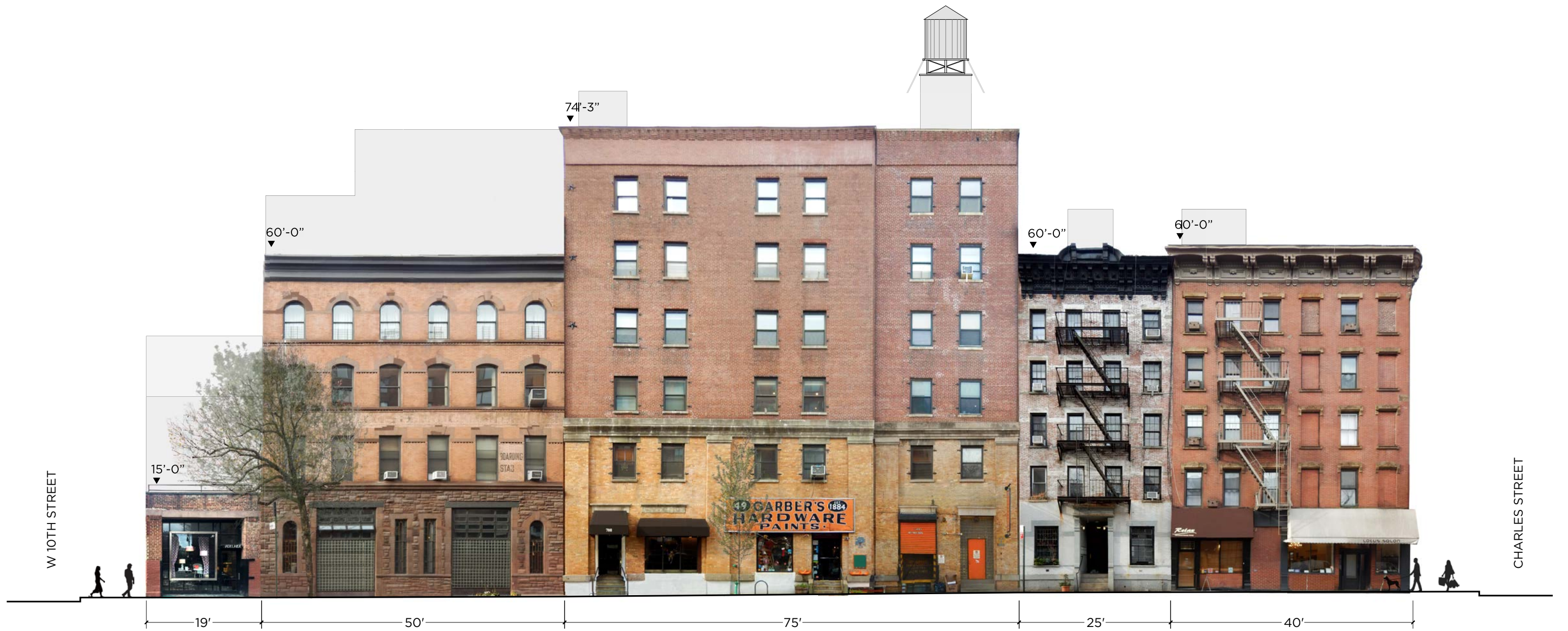


**Greenwich Street - Greenwich Village His. District Extension**  
 Loading trucks along the elevated subway  
 Source: [www.oldnyc.org](http://www.oldnyc.org)





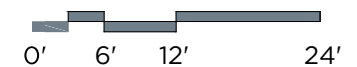




Ascher Davis Architects  
www.ad-arch.com

710 Greenwich Street  
Greenwich Village His. District Ext.

Existing Greenwich Street Elevation  
LPC Presentation / 9 May 2017



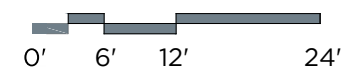




Ascher Davis Architects  
www.ad-arch.com

710 Greenwich Street  
Greenwich Village His. District Ext.

Proposed Greenwich Street Elevation  
LPC Presentation / 9 May 2017











# DRAWING KEY

- AREA OF DEMOLITION WORK
- ADJACENT BUILDING (NO WORK)

AREA OF  
WORK AT FACADE



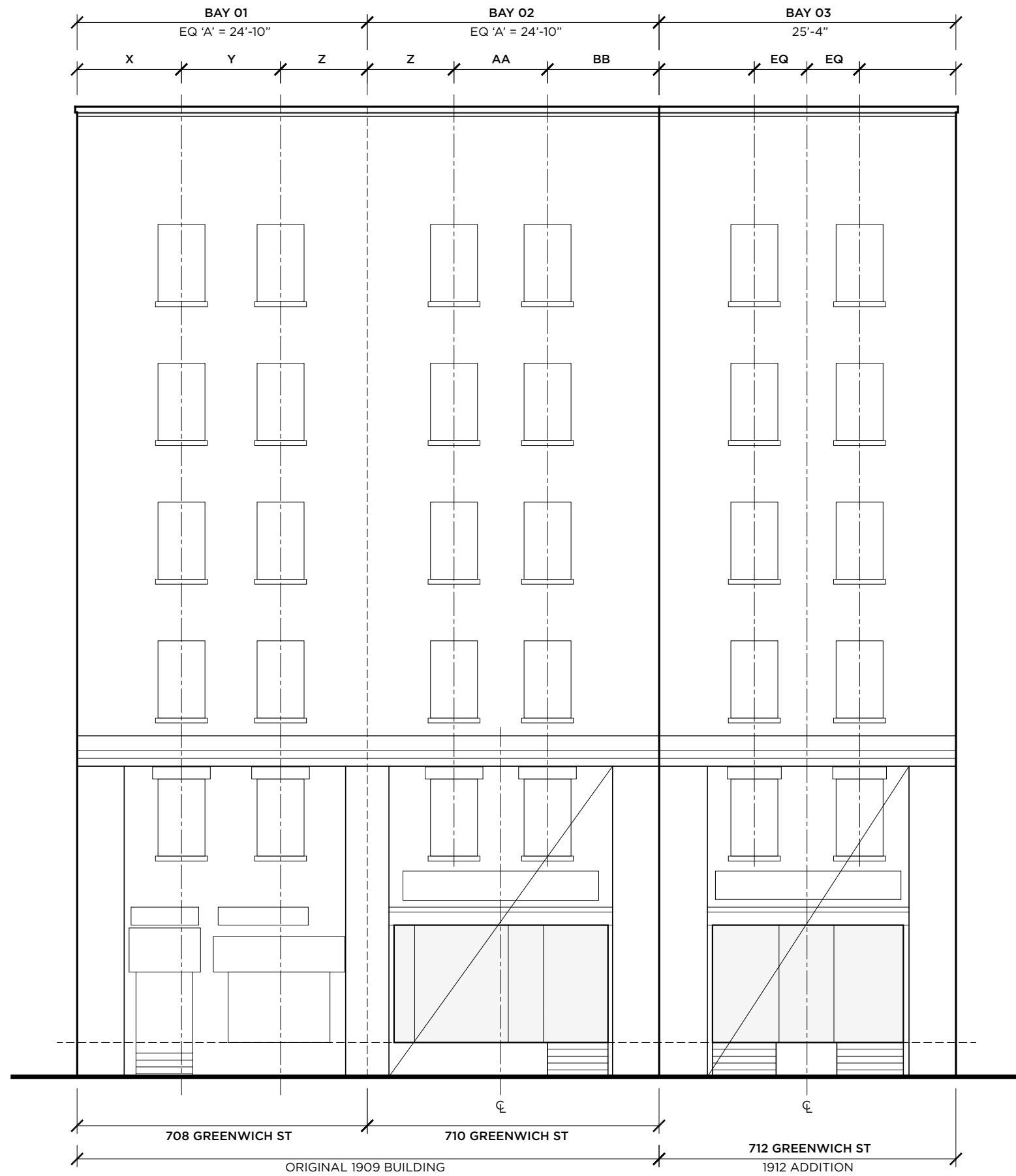
Ascher Davis Architects  
www.ad-arch.com

710 Greenwich Street  
Greenwich Village His. District Ext.

Demolition Elevation Drawing  
LPC Presentation / 9 May 2017

0' 4' 8' 16'













#### DRAWING KEY

- AREA OF NEW GLAZING (IN FRONT OF BRICK)
- AREA OF NEW GLAZING
- LOCATION OF NEW METAL STOREFRONT & SIGNAGE
- ADJACENT BUILDING (NO WORK)



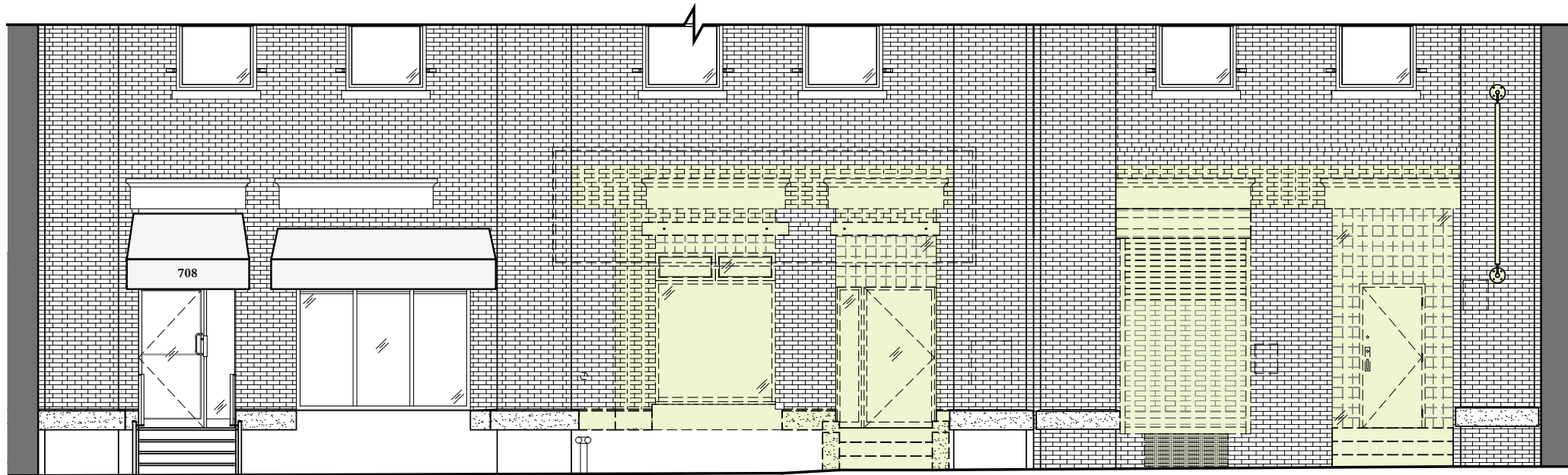
Ascher Davis Architects  
www.ad-arch.com

710 Greenwich Street  
Greenwich Village His. District Ext.

Proposed Elevation Drawing  
LPC Presentation / 9 May 2017

0' 4' 8' 16'

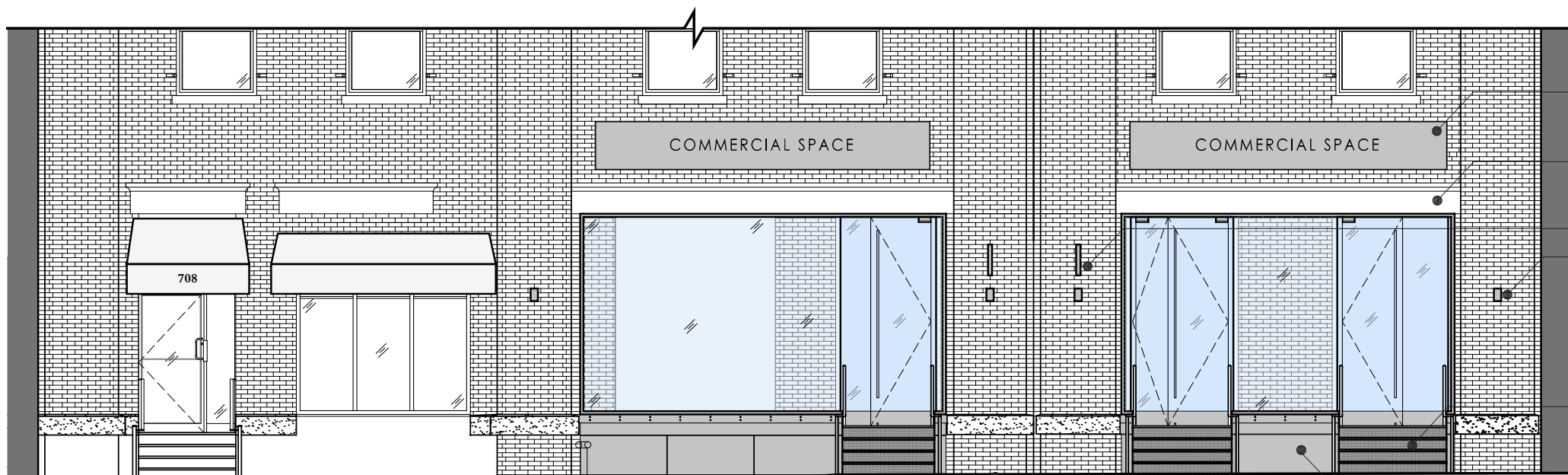




Elevation - Partial - Demolition

#### DRAWING KEY

- AREA OF DEMOLITION WORK
- AREA OF NEW GLAZING (IN FRONT OF BRICK)
- AREA OF NEW GLAZING
- LOCATION OF NEW METAL STOREFRONT & SIGNAGE
- ADJACENT BUILDING (NO WORK)



Elevation - Partial - Construction

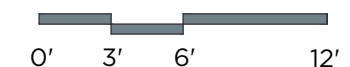
- NEW METAL BACKLIT SIGNAGE PANEL, TYP.
- NEW CONTINUOUS STONE LINTEL
- NEW BLADESIGN, TYP.
- NEW WALL SCENCE, TYP.
- NEW METAL STAIRS, LANDING & RAILINGS. STAIR RISERS TO BE PERFORATED MATERIAL, TYP.
- NEW METAL FASCIA PANEL BASE, TYP.
- NEW BRICK MASONRY VENEER IN AREAS TO MATCH EXISTING PIERS IN TYPE, COLOR, ETC., TYP.



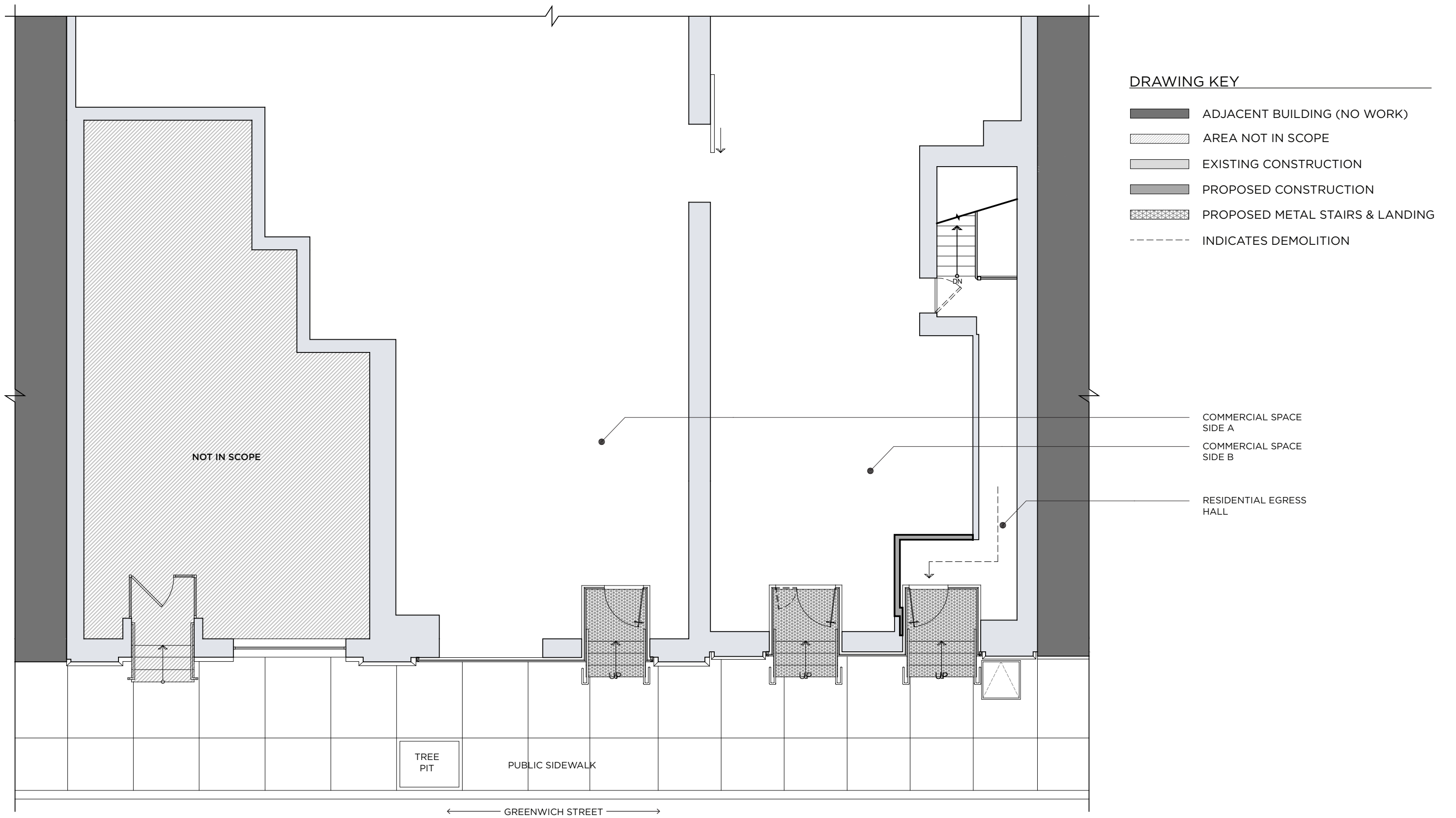
Ascher Davis Architects  
www.ad-arch.com

710 Greenwich Street  
Greenwich Village His. District Ext.

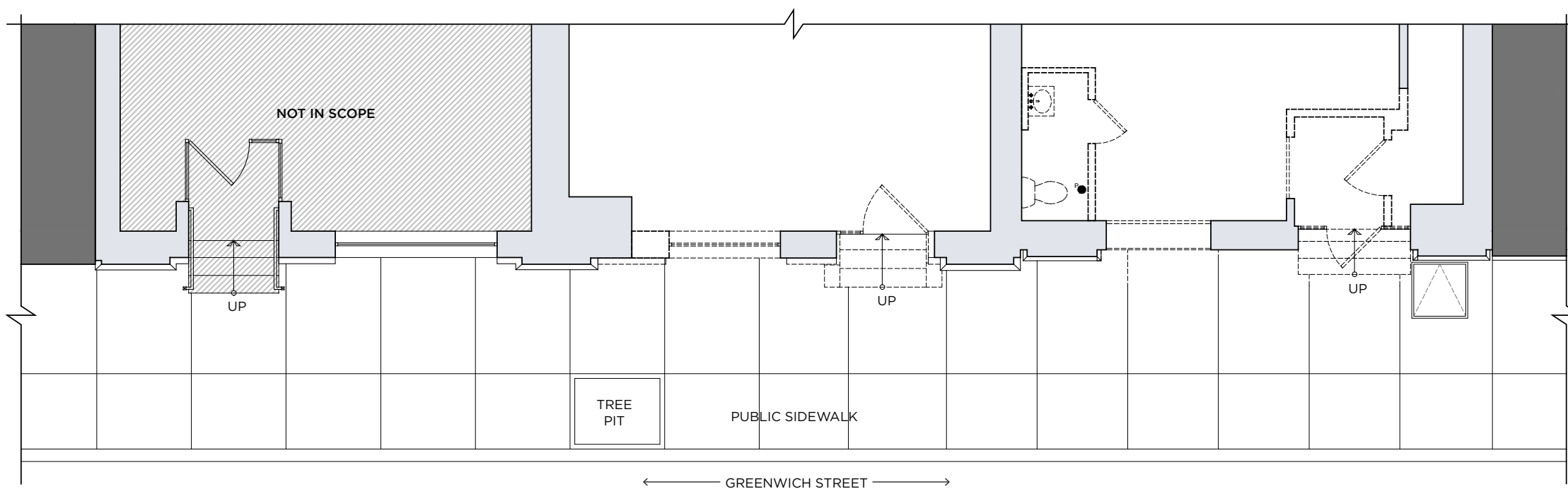
Partial Elevation Drawings  
LPC Presentation / 9 May 2017







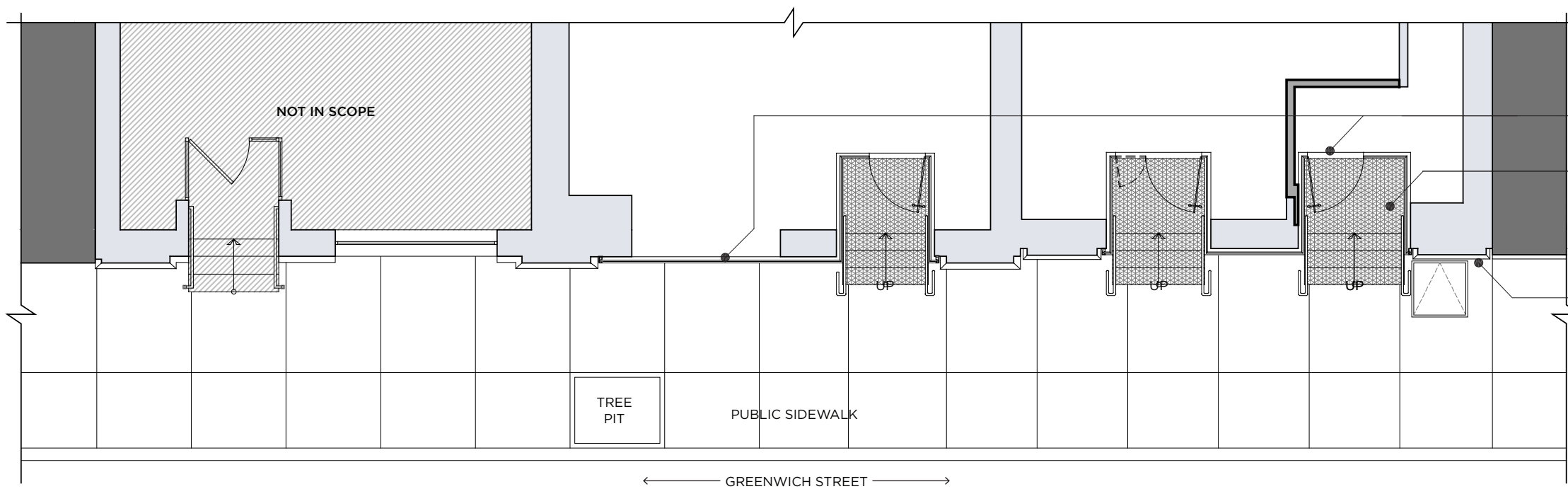




Plan - Partial - Demolition

#### DRAWING KEY

- ADJACENT BUILDING (NO WORK)
- AREA NOT IN SCOPE
- EXISTING CONSTRUCTION
- PROPOSED CONSTRUCTION
- PROPOSED METAL STAIRS & LANDING
- INDICATES DEMOLITION



Plan - Partial - Construction

NEW METAL AND GLASS  
STOREFRONT & DOOR SYSTEM  
(SEE ELEVATIONS)

NEW METAL STAIRS, RAILING &  
LANDING

EXISTING BRICK PIERS TO  
REMAIN, TYP.



Ascher Davis Architects  
www.ad-arch.com

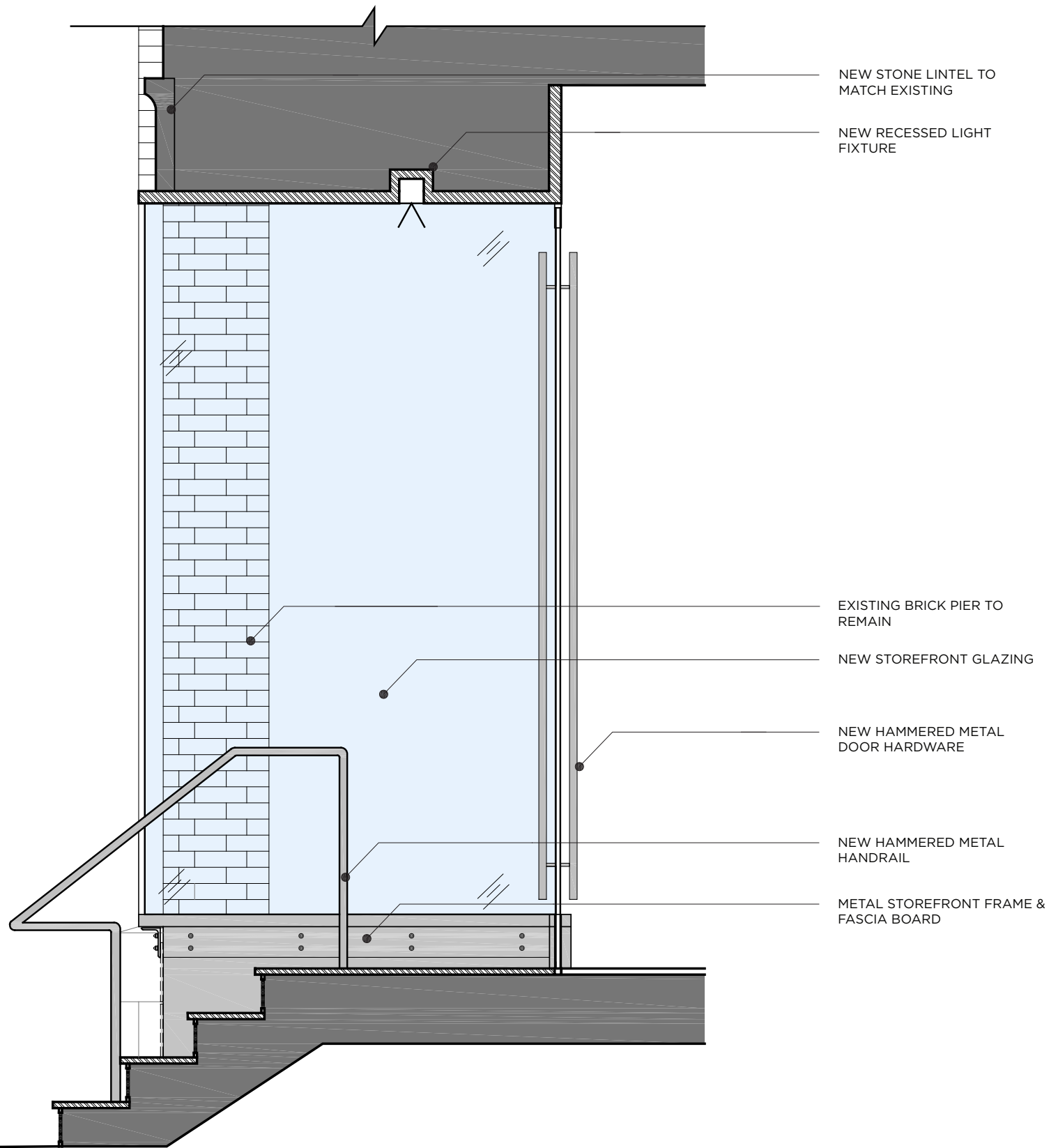
710 Greenwich Street  
Greenwich Village His. District Ext.

Partial Plan Drawings  
LPC Presentation / 9 May 2017

0' 3' 6' 12'



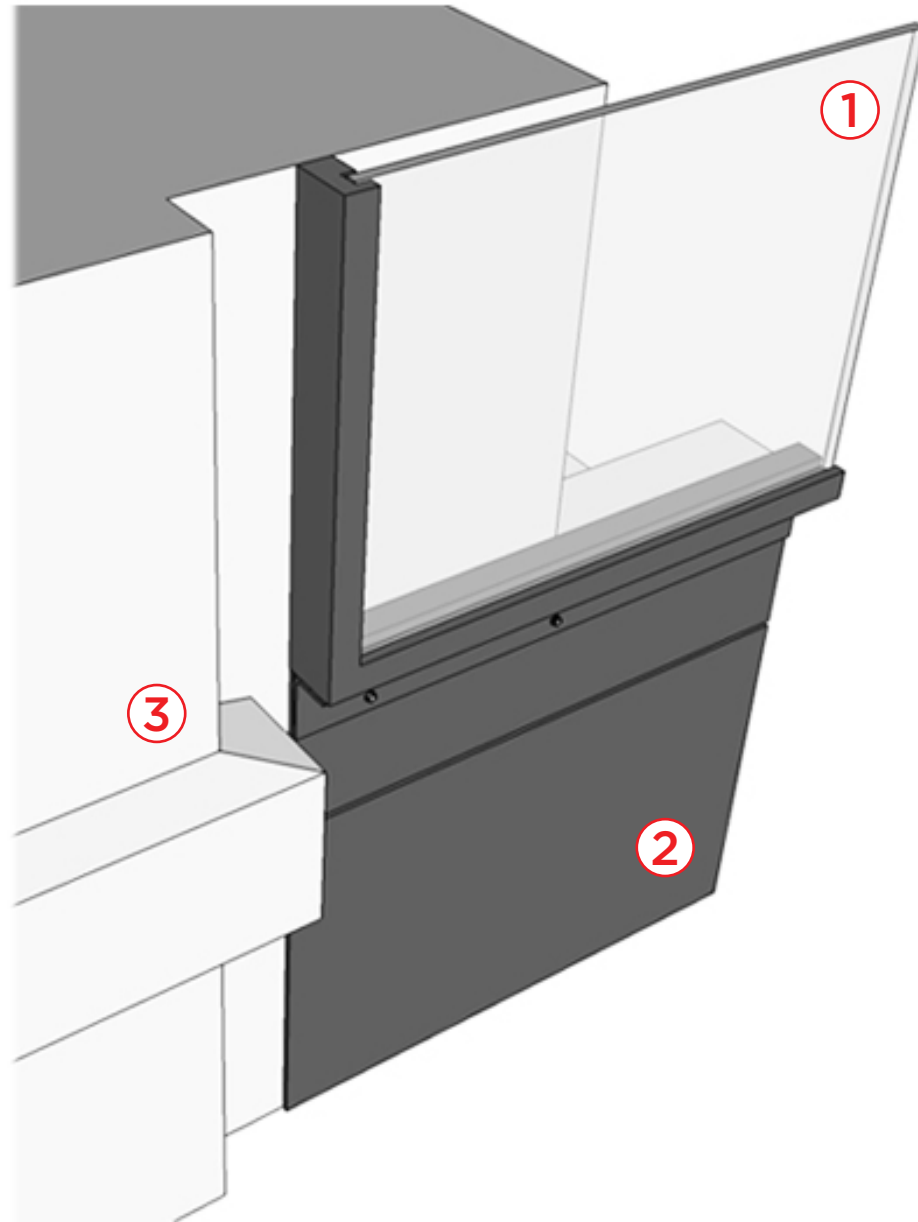




Section - Proposed Entry





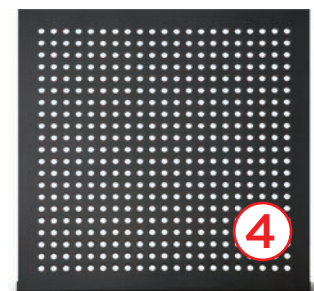


### PROPOSED STOREFRONT COMPONENTS

1. Proposed Clear Low-E Glazing at Storefront
2. Proposed Steel Stained Natural Black Metal Fascia Board & Storefront System
3. Surrounding Existing Brick Pier to Remain







## PROPOSED MATERIALS & FINISHES KEY

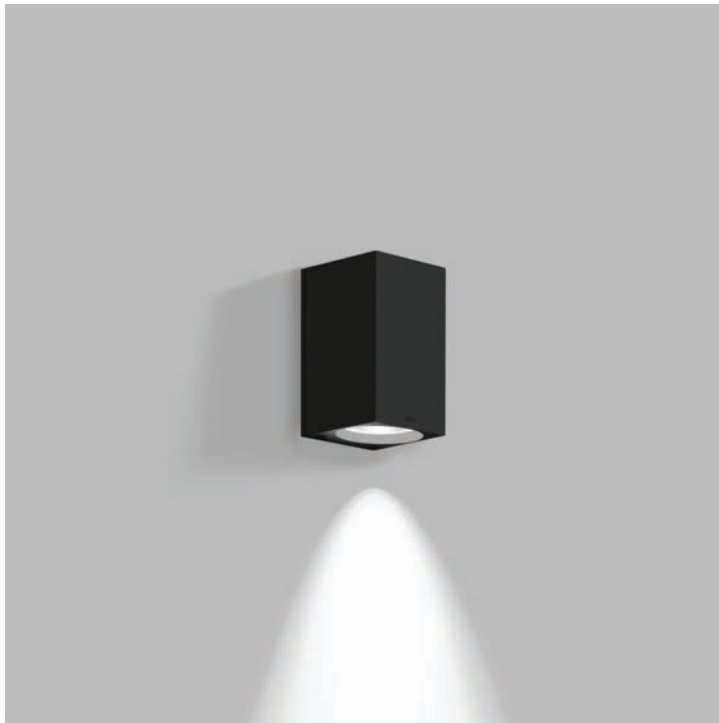
1. Existing Brick Masonry  
(New Face Brick Infill to Match Existing)
2. Clear Glass Storefront & Glass Door System
3. Steel Stained Natural Black Metal Storefront System
4. Steel Stained Natural Black Perforated Stair Risers



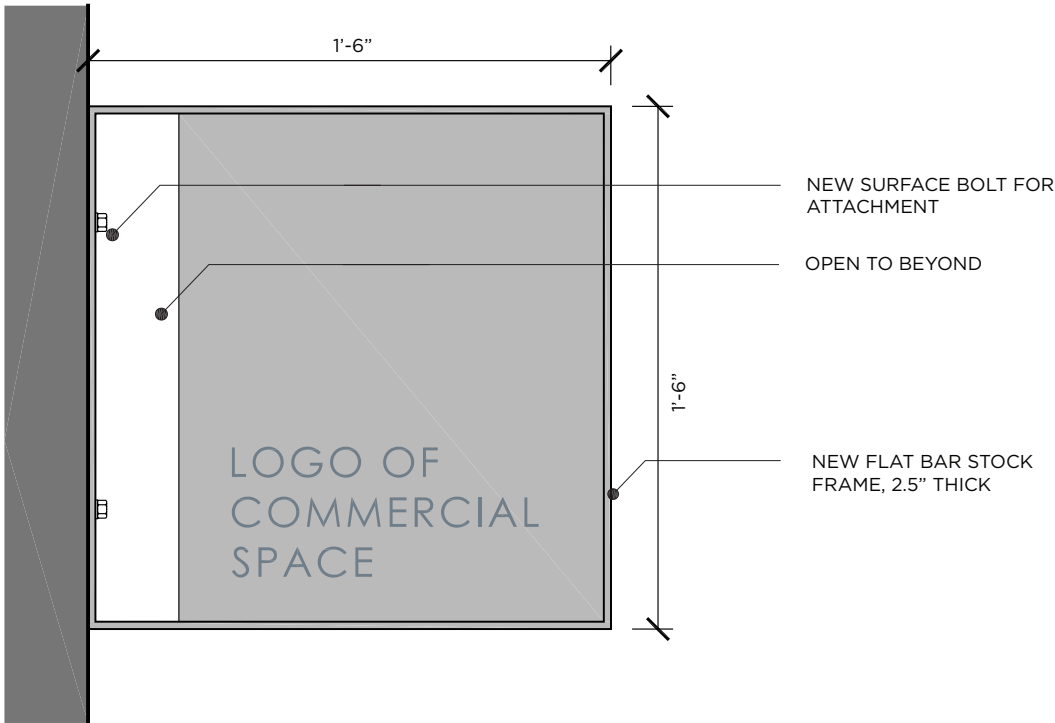
Ascher Davis Architects  
www.ad-arch.com

710 Greenwich Street  
Greenwich Village His. District Ext.

Proposed Materials  
LPC Presentation / 9 May 2017



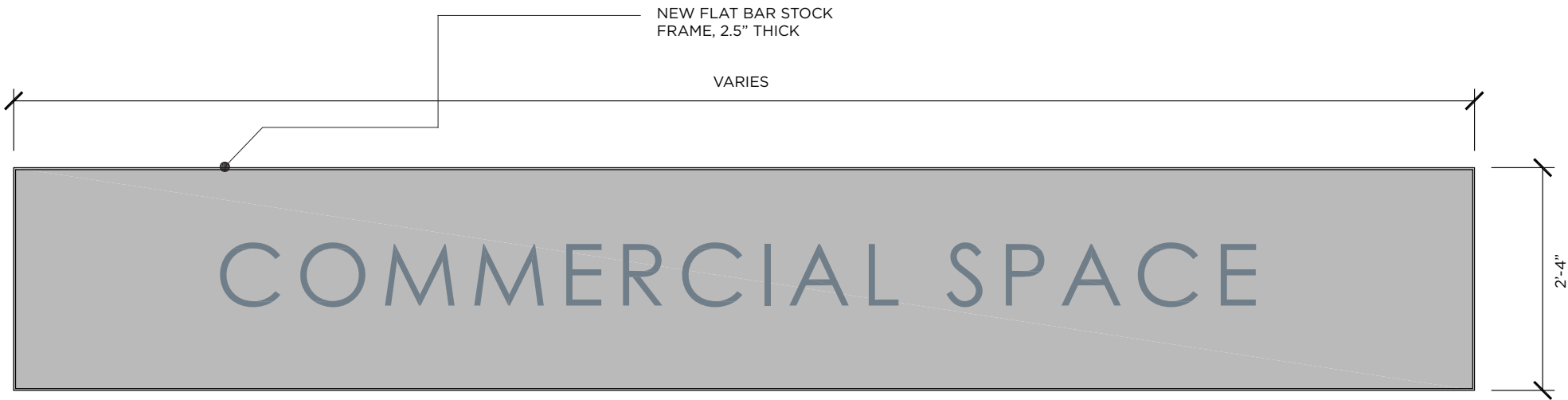
Proposed Exterior Wall Sconce  
BEGA Outdoor Luminaire, Graphite



Elevation - Proposed Bladesign, Non-Illuminated



Proposed Exterior Entry Recessed Light  
BEGA Outdoor Recessed Luminaire, Graphite



Elevation - Proposed Signage Panel, Non-Illuminated







**APPENDIX**

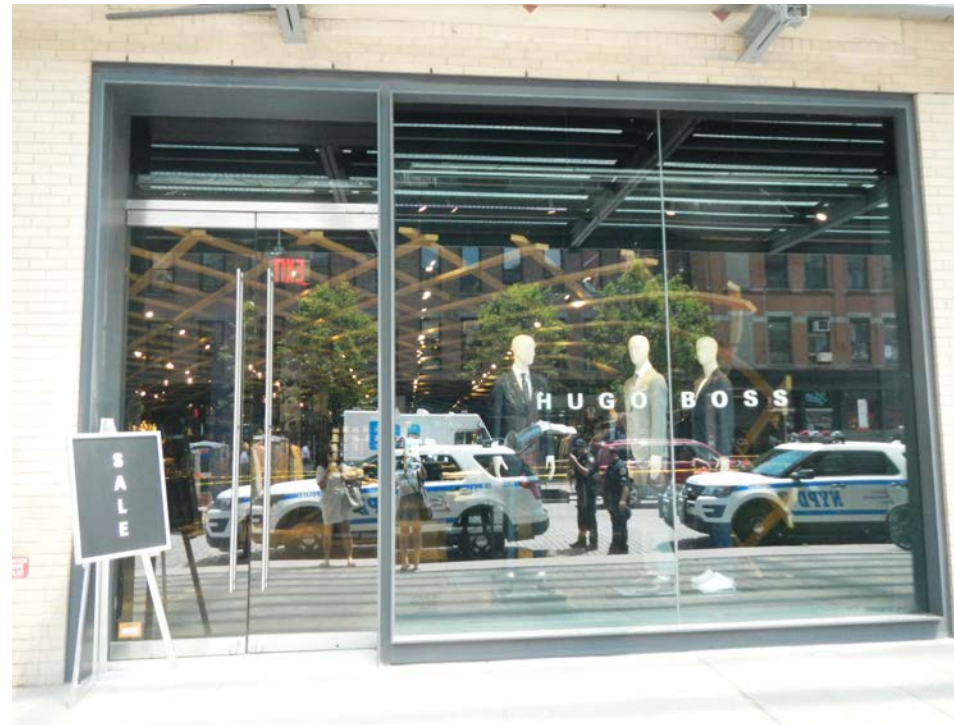
**710 Greenwich Street**  
Greenwich Village Historic District Extension







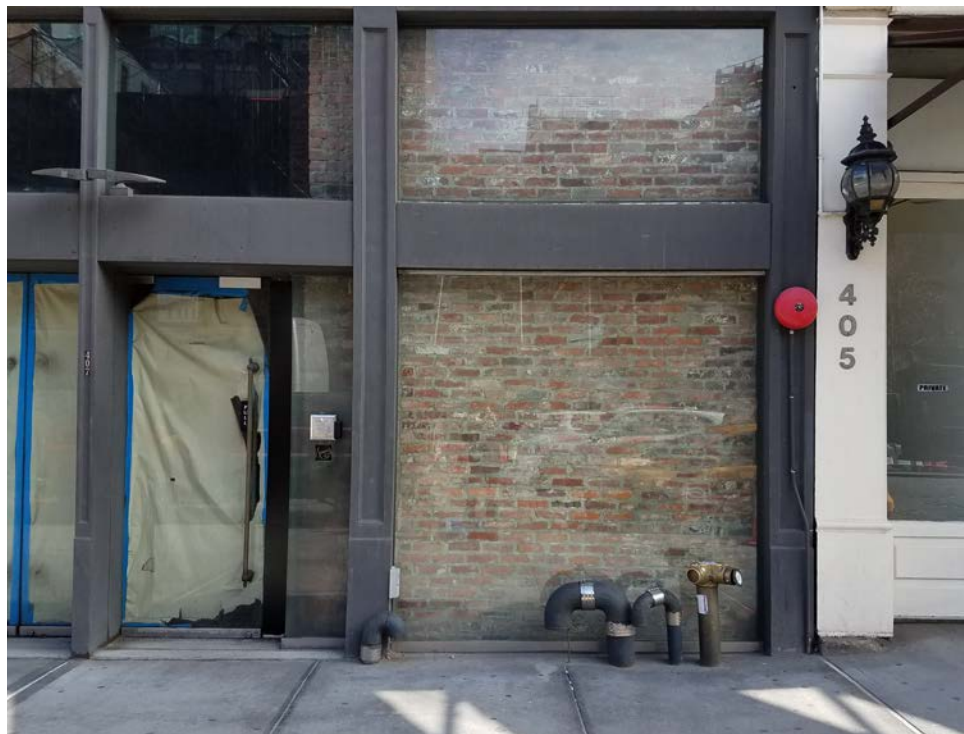
**27 Ninth Avenue - Gansevoort Market Historic District**  
Steel storefront system



**401 West 14th Street - Gansevoort Market Historic District**  
Metal storefront with frame reveal



**401 West 14th Street - Gansevoort Market Historic District**  
Detail at frame reveal



**407 West 14th Street - Gansevoort Market Historic District**  
Metal storefront system over existing brick masonry



**702 Greenwich Street - Greenwich Village His. District Ext.**  
Metal storefront system



**702 Greenwich Street - Greenwich Village His. District Ext.**  
Interior view of metal storefront system



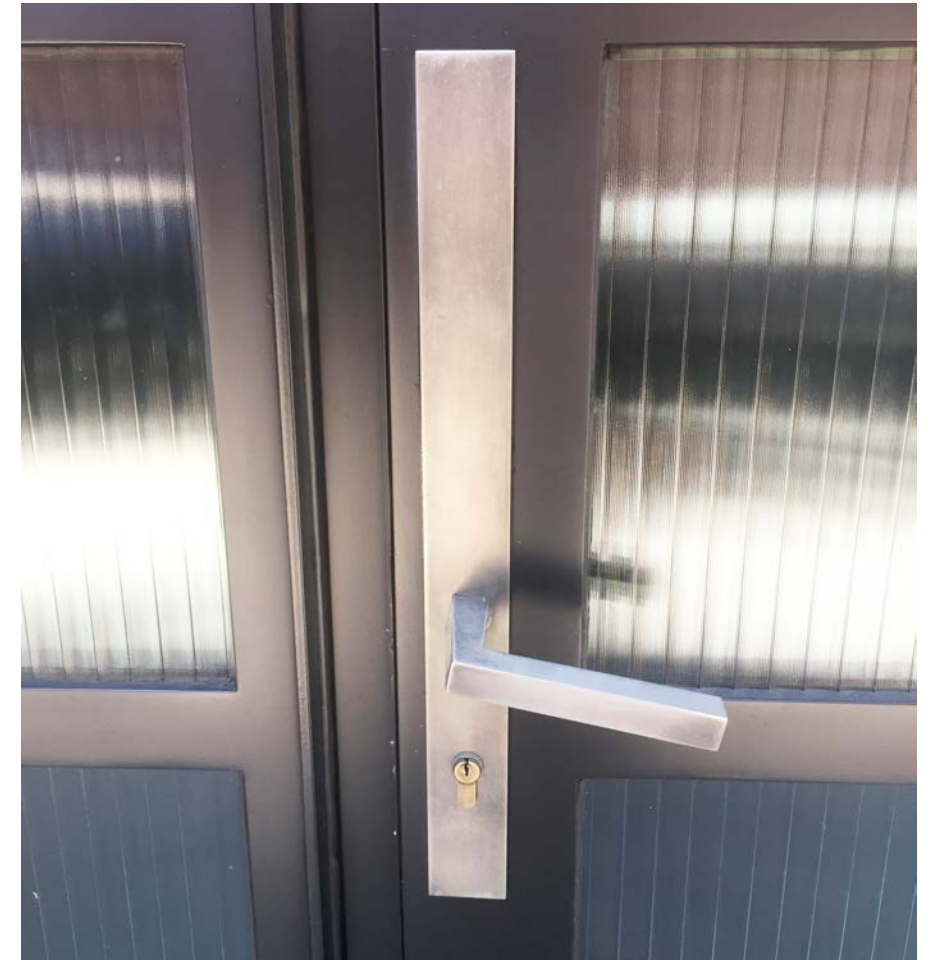




**Exterior Sconce - Greenwich Village His. Dist. Ext.**  
BEGA light fixture



**Exterior Sconce - Greenwich Village His. Dist. Ext.**  
BEGA light fixture



**Door Hardware - Greenwich Village His. Dist. Ext.**  
Modern metal entry door hardware

