



Greenwich Village

SOCIETY FOR HISTORIC PRESERVATION

**Twenty Years
of Preserving
Federal-Era Rowhouses
1997-2017**

In 1997, GVSHP received a grant from the Preserve New York Program, a re-grant program of the Preservation League of New York State and the New York State Council on the Arts, to document and advocate for the preservation of the remaining federal-era houses in Lower Manhattan. At the time, it was believed that about three hundred thirty such structures survived, but about half lacked any landmark protection or were not recognized by the State and National Registers of Historic Places.

In the intervening two decades, GVSHP has managed to successfully advocate for one hundred thirty-six of these houses being landmarked and/or listed on the State and National Registers of Historic Places. This includes thirteen individual NYC landmarks, nine NYC historic districts or historic district extensions, and the South Village State and National Register Historic District, which contains ninety-six federal-era houses among its approximately seven hundred fifty buildings.

Twenty years after the initial grant, the documentation and preservation of the many surviving Federal houses in Lower Manhattan remain a special and ongoing part of the Greenwich Village Society for Historic Preservation's mission. This report celebrates the enduring legacy of that grant and our ongoing effort to protect and celebrate these precious historic buildings.



GVSHP Executive Director Vicki Weiner and staffer Susan DeVries with Anthony C. Wood and Anne Van Ingen in 1997 on the stoop of 7 Leroy Street receiving the Preserve New York federal houses grant. 7 Leroy Street also appears on the cover of the report.

About Federal Houses



32 Dominick Street, built c.1826, landmarked in 2012

Federal houses were built between ca. 1790 to ca. 1835. The style was so named because it was the first American architectural style to emerge after the Revolutionary War. In elevation and plan, Federal Period row houses were quite modest. Characterized by classic proportions and almost planar smoothness, they were ornamented with simple detailing of lintels, dormers, and doorways. Usually two to three stories high, three bays wide, with steeply pitched roofs, houses were of load-bearing masonry construction. The brick facades were laid in a Flemish bond which alternated a stretcher and a header in every row. All structures in this report were originally built as Federal style houses, though some have been substantially altered.

About The Report

The Society either proposed the houses in this report for individual landmark designation or for inclusion in historic districts, or both, or has advocated for their designation. Special thanks to Jiageng Zhu for his efforts in creating this report.

Federal Houses Count

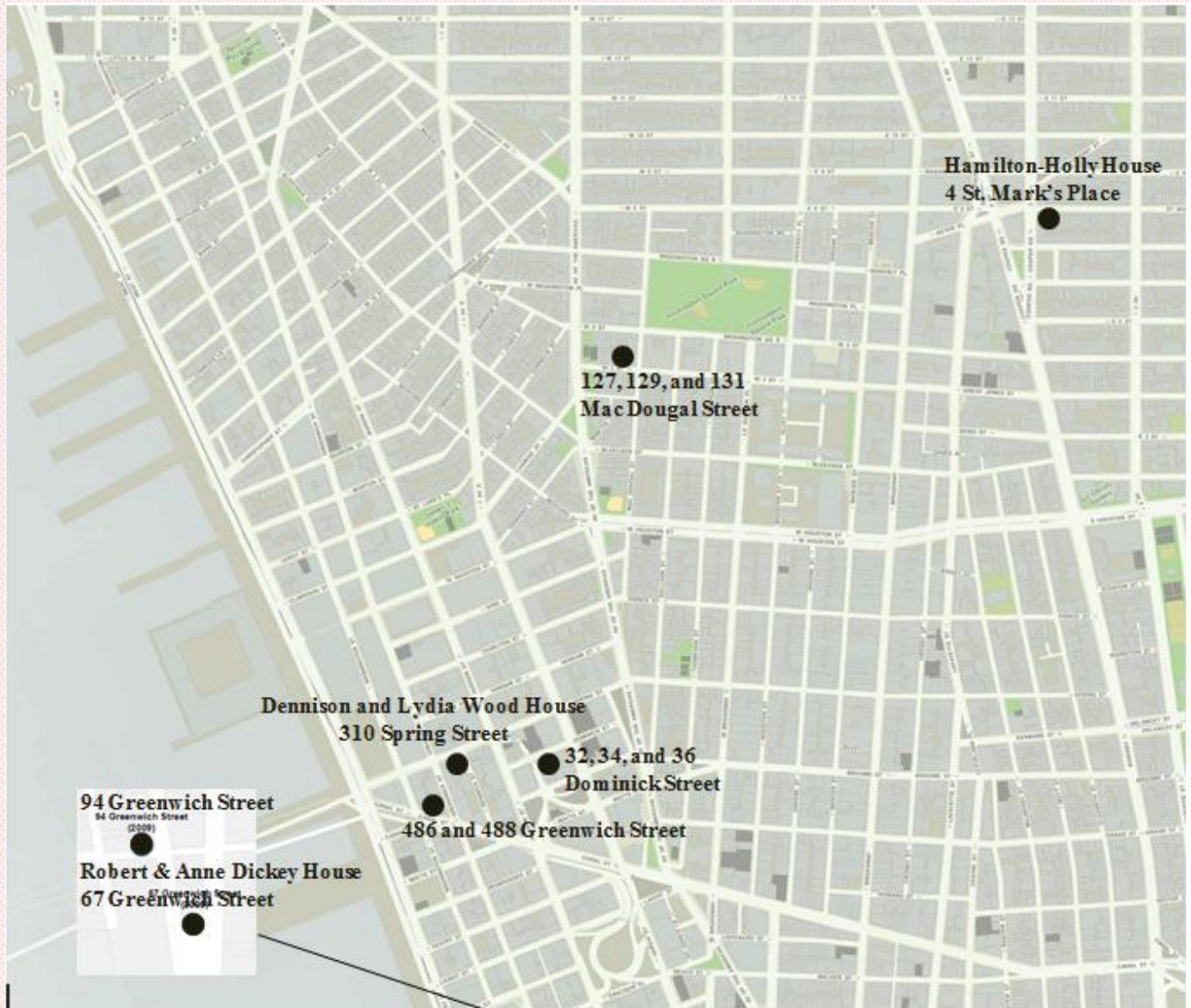
		<i>Page</i>
Total number of Federal Houses landmarked and/or listed on State/National Registers of Historic Places:	136	
<u>Individual Landmarks</u>	13	2
<u>New York City Historic Districts</u>	125 (116)*	6
<i>NoHo Historic District (1999)</i>	5	6
<i>NoHo East Historic District (2003)</i>	10	8
<i>Greenwich Village Historic District Extension (2006)</i>	4	10
<i>Weehawken Street Historic District (2006)</i>	1	12
<i>NoHo Historic District Extension (2008)</i>	6	14
<i>Greenwich Village Historic District Extension II (2010)</i>	54	16
<i>East Village/Lower East Side Historic District (2012)</i>	7	22
<i>South Village Historic District (2013)</i>	18 (15)	24
<i>Sullivan-Thompson Historic District</i>	20 (15)	27
<u>National Register Historic District</u>	92 (7)**	30
<i>South Village National Register Historic District (2013)</i>	92 (7)	30

* Number in parentheses does not include buildings included in Individual Landmarks

** Number in parentheses does not include buildings included in New York City Historic Districts

INDIVIDUAL LANDMARKED FEDERAL HOUSES

Map of Individual Landmarks



	<p>Hamilton-Holly House, 4 St. Mark's Place (2004)</p> <p>Federal Style Built 1831 Designated in 2004, No. 4 St. Marks Place was among 13 federal houses GVSHP and the New York Landmarks Conservancy proposed for landmark designation in 2003. Click HERE for the designation report.</p>
	<p>127 MacDougal Street (2004) *also in South Village Historic District</p> <p>Federal Style Built c.1828-29; two dormers linked prior to 1920 Nos. 127, 129, and 131 MacDougal Street were among 13 federal houses GVSHP and the New York Landmarks Conservancy proposed for landmark designation in 2003. They were designated in 2004. Click HERE for the designation report.</p>
	<p>129 MacDougal Street (2004) *also in South Village Historic District</p> <p>Federal Style Built c.1828-29; two dormers linked c.1933-38 Nos. 127, 129, and 131 MacDougal Street were among 13 federal houses GVSHP and the New York Landmarks Conservancy proposed for landmark designation in 2003. They were designated in 2004. Click HERE for the designation report.</p>
	<p>131 MacDougal Street (2004) *also in South Village Historic District</p> <p>Federal Style Built c.1828-29; two dormers linked c.1950 Nos. 127, 129, and 131 MacDougal Street were among 13 federal houses GVSHP and the New York Landmarks Conservancy proposed for landmark designation in 2003. They were designated in 2004. Click HERE for the designation report.</p>
	<p>486 Greenwich Street (2007)</p> <p>Federal Style Built c.1823; altered 1917 Designated in 2007, Nos. 486 and 488 Greenwich Street were among 13 federal houses GVSHP and the New York Landmarks Conservancy proposed for landmark designation in 2003. Click HERE for the designation report.</p>



488 Greenwich Street (2007)

Federal Style

Built c.1823

Designated in 2007, Nos. 486 and 488 Greenwich Street were among 13 Federal houses GVSHP and the New York Landmarks Conservancy proposed for landmark designation in 2003.

Click [HERE](#) for the designation report.



Dennison and Lydia Wood House, 310 Spring Street (2012)

Federal Style

Built c.1818-19; altered 1847, and after 1939; Storefront opening created in 1847

This Federal house in the Hudson Square neighborhood was landmarked in 2012; GVSHP supported and helped advocate for that designation.

Click [HERE](#) for the designation report.



32 Dominick Street (2012)

Federal Style

Built c.1826; altered c.1919-27

32, 34, and 36 Dominick Street were landmarked in 2012; GVSHP supported and helped advocate for that designation.

Click [HERE](#) for the designation report.



34 Dominick Street (2012)

Federal Style with Italianate alterations

Built c.1826; altered c.1866

32, 34, and 36 Dominick Street were landmarked in 2012; GVSHP supported and helped advocate for that designation.

Click [HERE](#) for the designation report.



36 Dominick Street (2012)

Federal Style with Italianate alterations

Built c.1826; altered c.1866

32, 34, and 36 Dominick Street were landmarked in 2012; GVSHP supported and helped advocate for that designation.

Click [HERE](#) for the designation report.



Robert & Anne Dickey House, 67 Greenwich Street (2005)

Federal Style

Built 1809-10; altered 1872

Nos. 67 and 94 Greenwich Street were among 13 federal houses GVSHP and the New York Landmarks Conservancy proposed for landmark designation in 2003.

Click [HERE](#) for the designation report.



94 Greenwich Street (2009)

Federal Style

Built c.1799-1800; fourth story added by 1858; rear addition c.1853/1873

Nos. 67 and 94 Greenwich Street were among 13 federal houses GVSHP and the New York Landmarks Conservancy proposed for landmark designation in 2003.

Click [HERE](#) for the designation report.



57 Sullivan Street (2016)

Federal style

Built c.1816-17; altered late 1850s

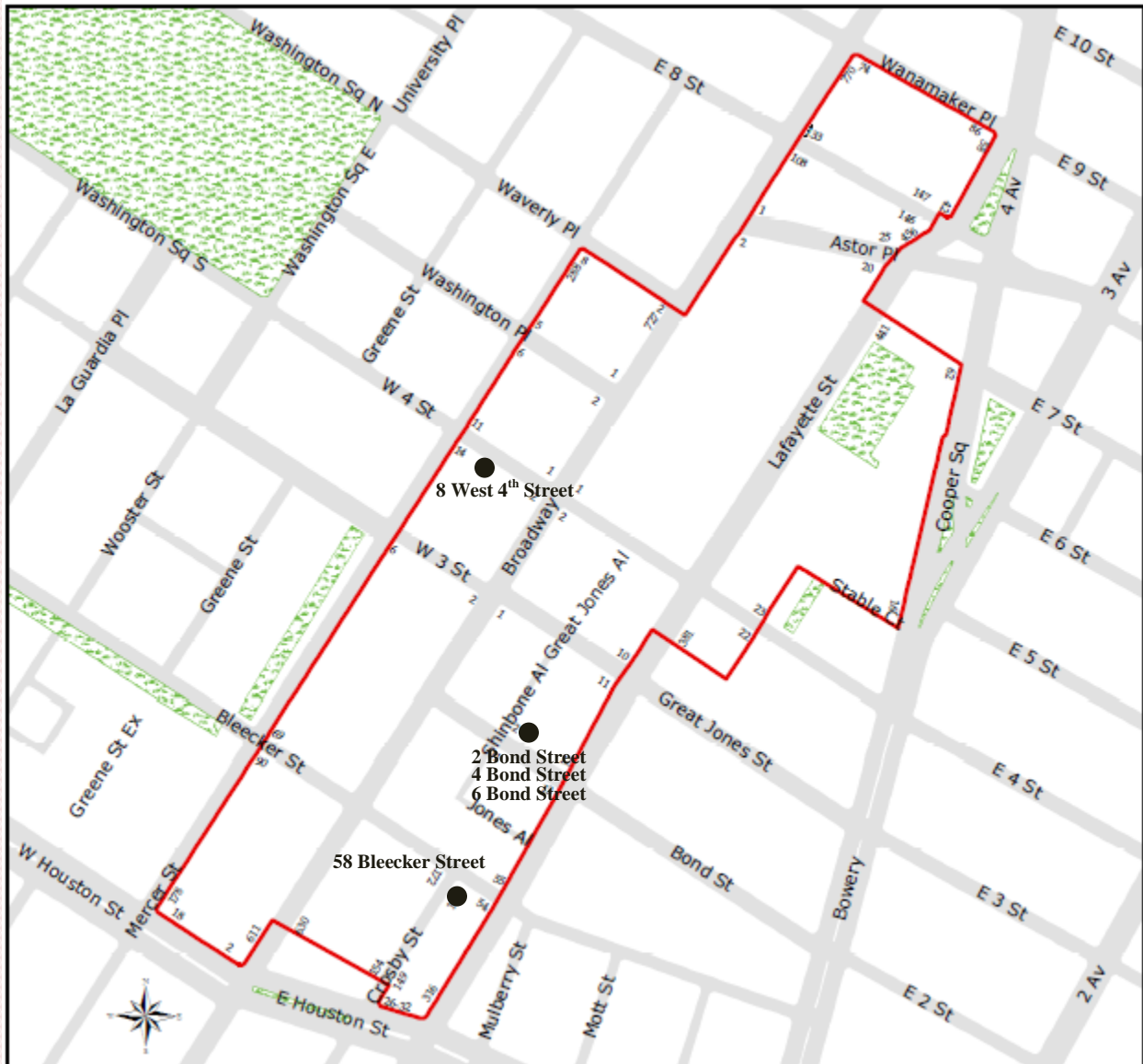
No. 57 Sullivan Street were among 13 federal houses GVSHP and the New York Landmarks Conservancy proposed for landmark designation in 2003.

Click [HERE](#) for the designation report.

FEDERAL HOUSES LOCATED WITHIN DESIGNATED
NEW YORK CITY HISTORIC DISTRICTS

NoHo Historic District (1999)

Map of Federal Houses Located within NoHo Historic District



Description of NoHo Historic District:

GVSHP was a staunch advocate of extending landmark protection to [NoHo](#). The NoHo Historic District was designated in 1999 with support from GVSHP.

Click [HERE](#) for the NoHo Historic District designation report.



58 Bleeker Street

Federal
1822-23



2 Bond Street

Federal/Italianate
1828-29 with later alterations



4 Bond Street

Federal/Italianate
1828-29 with 1863-64 and later alterations



6 Bond Street

Federal/Italianate
1828-29 with 1863-64 and later alterations

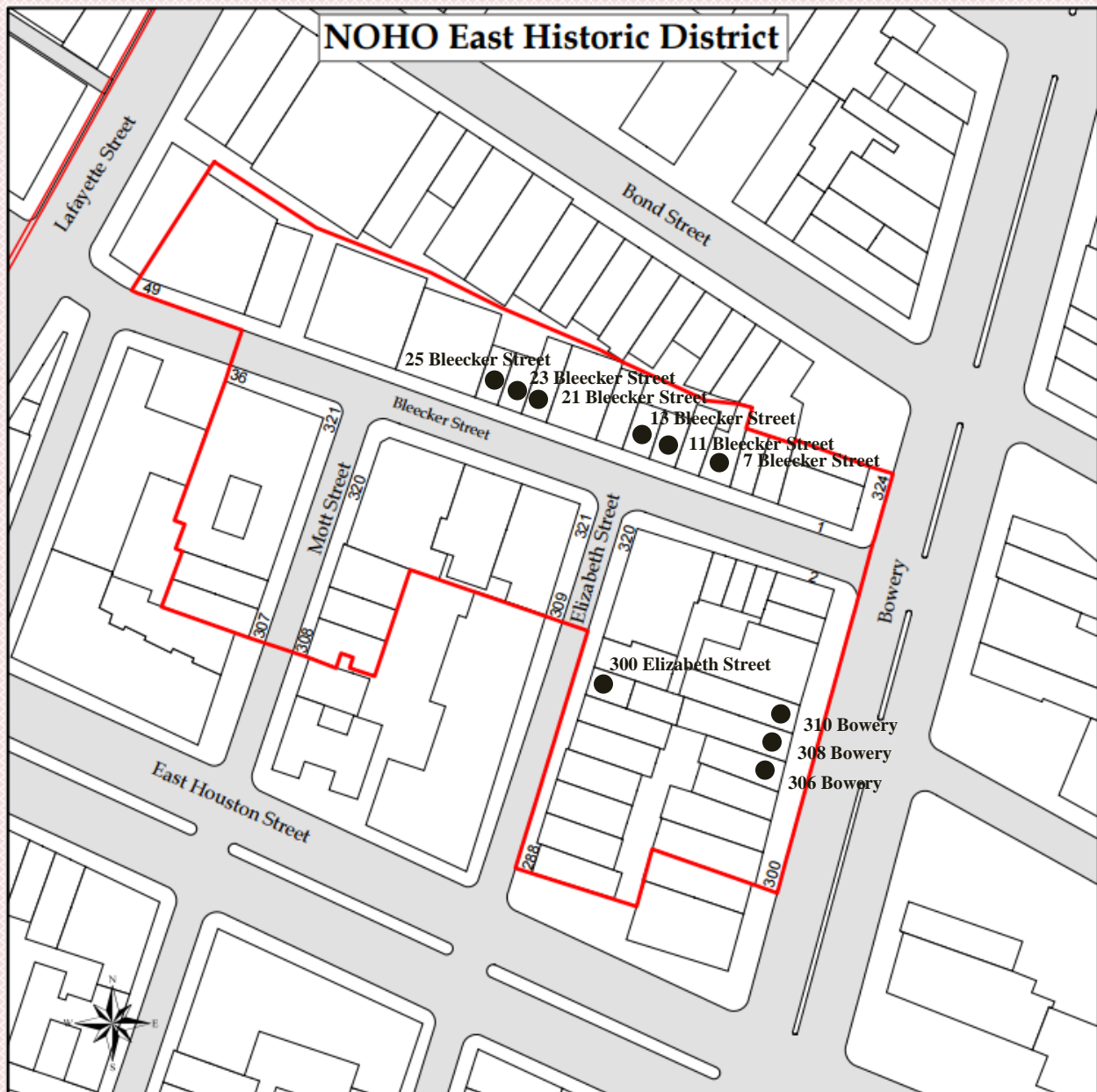


8 West 4th Street

Altered with surviving Federal details
Early 19th century with later alterations

NoHo East Historic District (2003)

Map of Federal Houses Located within NoHo East Historic District



Description of NoHo East Historic District:

Following the designation of the NoHo Historic District in 1999 (see above), GVSHP advocated to further extend landmark protections in the [NoHo](#) area. GVSHP strongly supported the designation of the NoHo East Historic District in 2003 and the NoHo Historic District Extension in 2008 (see below). Click [HERE](#) for the designation report for the NoHo East Historic District.



7 Bleeker Street

Federal with Italianate alterations
c. 1816-17



11 Bleeker Street

Federal with Italianate alterations
c.1822-25 with 1866-67 and later alterations



13 Bleeker Street

Federal with Italianate alterations
c. 1822-25 with mid-19th century and later alterations



21 and 23 Bleeker Street

Federal with Italianate alterations
c.1830 with later alterations



25 Bleeker Street

Altered Federal
c.1830; altered 1984



306 Bowery

Federal
c.1820



308 Bowery

Federal
c.1820

310 Bowery

Federal
c.1820



300 Elizabeth Street

Federal with later alterations
c.1828 with 1922 alteration

Greenwich Village Historic District Extension I (2006)

Map of Federal Houses Located within Greenwich Village Historic District Extension I



Description of Greenwich Village Historic District Extension:

Designated in 2006 in response to GVSHP and other groups' proposal for landmarking in the Far West Village, this was the first ever expansion of the Greenwich Village Historic District.

Click [HERE](#) for the Greenwich Village Historic District Extension I designation report.



131 Charles Street
Federal
1834



651 Washington Street
Federal
1829



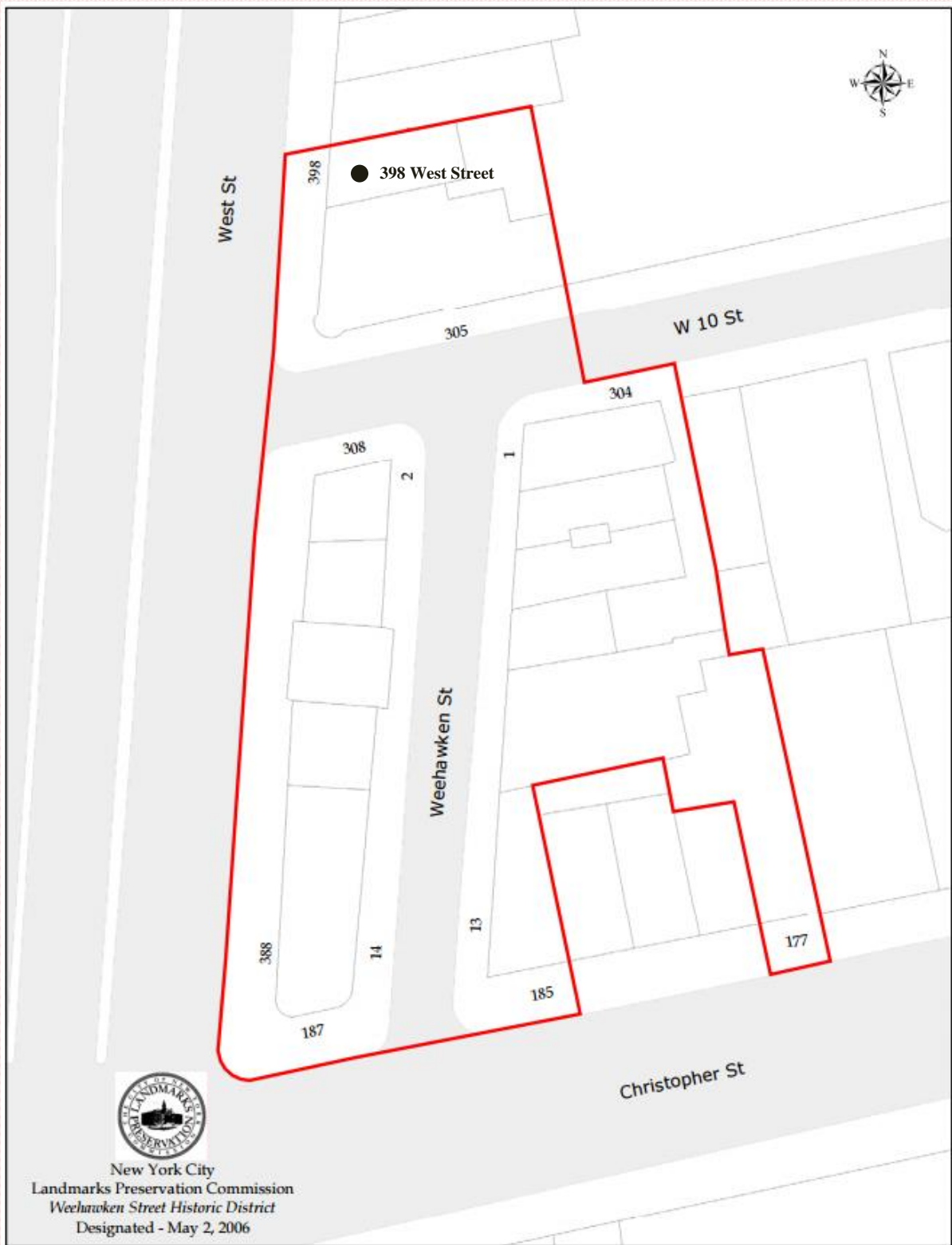
653 Washington Street
Federal
1829



655 Washington Street
Federal
1829

Weehawken Street Historic District (2006)

Map of Federal Houses Located within Weehawken Street Historic District



Description of Weehawken Street Historic District:

Designated in 2006 in response to GVSHP and other groups' proposal for landmarking the Far West Village, this was the only second new historic district in Greenwich Village since 1969.

Click [HERE](#) for the Weehawken Street Historic District.



398 West Street

Federal
1830-31

Map of Federal Houses Located within NoHo Historic District Extension



Description of NoHo Historic District Extension:

Following the designation of the NoHo Historic District in 1999 (see above), GVSHP advocated to further extend landmark protections in the [NoHo](#) area. GVSHP strongly supported the designation of the NoHo East Historic District in 2003 (see above) and the NoHo Historic District Extension in 2008. Click [HERE](#) for the designation report for the NoHo Historic District Extension.



26 Bond Street
Federal
c.1830-31



47 Bond Street
Federal/Greek Revival
c.1830; altered 1883



49 Bond Street
Federal/Greek Revival
c.1830; altered c.1882



51 Bond Street
Federal/Greek Revival
c. 1830



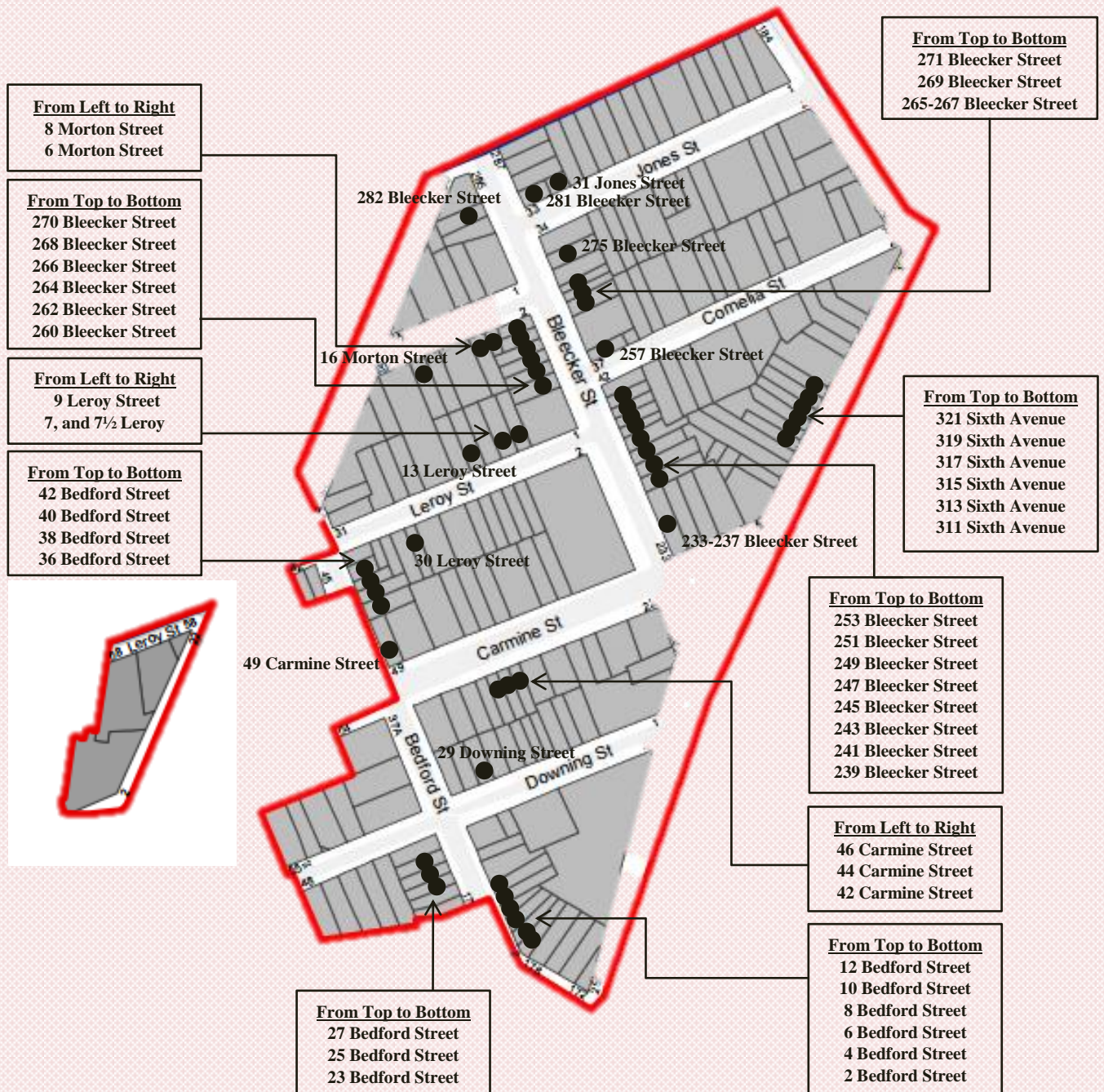
332 Bowery
Federal/Italianate
c.1827; 1859 addition



32 East 4th Street
Italianate, originally Federal
c.1835; altered 1873

Greenwich Village Historic District Extension II (2010)

Map of Federal Houses Located within Greenwich Village Historic District Extension II



Description of Greenwich Village Historic District Extension II:

In 2010, the City landmarked part (“phase I”) of GVSHP’s proposed South Village Historic District (Click [HERE](#) for report) as the Greenwich Village Historic Extension II. This 235-building, 12-block designation was at the time the largest expansion of landmark protections in Greenwich Village since 1969.

Click [HERE](#) for the Greenwich Village Historic District Extension II designation report.



2 Bedford Street
Altered Federal
1828-29; altered 1868,
1913, and 1969



4 Bedford Street
Altered Federal
1828-29; altered 1870,
1901, btw/ 1939 and 1985



6 Bedford Street
Federal, now Renaissance
Revival
1828-29; altered 1870



8 Bedford Street
Altered Federal
1828-29; altered 1911,
and 1913



10 Bedford Street
Federal, now Renaissance
Revival
c.1830; altered 1885



12-12½ Bedford Street
Federal, now vernacular
Moderne



23 Bedford Street
Altered Federal
c.1828; altered 1885, and
1939



25 Bedford Street
Altered Federal
c.1828; altered 1888, and
1965



27 Bedford Street
Altered Federal, now
Moderne
c.1828; altered 1888, and
1941



36 Bedford Street
Altered Federal
1835-36; altered 1875,
1925, and 1930



38 Bedford Street
Altered Federal, with
vernacular Classical
details
1835-36; altered 1923,
and 1930



40 Bedford Street
Altered Federal, with
Italianate and Colonial
Revival details
1835-36; altered 1877,
and 1930



42 Bedford Street
Altered Federal, with
Colonial Revival details
1835-36; altered 1930,
and c.1980s



233-237 Bleecker Street
Altered Federal, now
Italianate
c.1822; c.1835, c.1859,
altered c.1870



239 Bleecker Street
Altered Federal
c.1828; altered 1872



241 Bleecker Street
Altered Federal, now
Italianate/Neo-Grec
c.1829; altered btwn 1876
and 1885



243 Bleecker Street
Altered Federal
c.1829; altered 1921



245 Bleecker Street
Altered Federal
c.1829; altered 1926



247 Bleecker Street
Altered Federal
c.1828; altered 1926, and
after 1985



249 Bleecker Street
Altered Federal
c.1828; altered c.1966



251 Bleecker Street
Altered Federal
c.1829; altered 1927, and
1931



253 Bleecker Street
Altered Federal
c.1829; altered 1924



257 Bleecker Street
Altered Federal
c.1829; altered c.1921,
and c.1930



260 Bleecker Street
Altered Federal
c.1832; altered 1871,
1951, and 1959



262 Bleecker Street
Altered Federal
c.1833; altered 1894



264 Bleecker Street
Altered Federal
c.1833; altered 1892, 1894,
1922-23, 1924-25, and 1951



265-267 Bleecker Street
Altered Federal
c.1835-36; altered c.1868,
and after 1985



266 Bleecker Street
Altered Federal
c.1833; altered 1879



268 Bleecker Street
Altered Federal
c.1833; altered 1959



269 Bleecker Street
Federal/Italianate
c.1835-36; altered c.1868



270 Bleecker Street
Federal with Italianate
alterations
c.1834; altered c.1869,
1889, and 1926



271 Bleecker Street
Federal/Italianate
c.1835-36; altered c.1855



275 Bleecker Street
Federal/Italianate
c.1818; altered 1876



281 Bleecker Street
Altered Federal, now
Colonial Revival
c.1813; altered 1890



282 Bleecker Street
Federal with Italianate
alterations
c.1830; altered 1886,
1927, and 1992



42 Carmine Street
Altered Federal
c.1827-28; altered 1891,
and 1909



44 Carmine Street
Altered Federal
c.1827-28; altered c.1955



46 Carmine Street
Altered Federal
c.1827-28; altered 1937,
and btwn 1964 and 1985



49 Carmine Street
Altered Federal
c.1828; altered 1878,
1901, and 1960



31 Jones Street
Altered Federal
c.1828; altered prior to the
late 1930s and after 1985



7, and 7 1/2 Leroy Street
Federal
c.1830-31; altered 1893



9 Leroy Street
Federal/Neo-Grec
1830-31; altered 1880



13 Leroy Street
Altered Federal
c.1829; altered 1869,
1913, 1918, and 1934



30 Leroy Street
Greek Revival style,
altered (*recognized as
Federal style in NR historic
district designation report)
1831; altered 1927



29 Downing Street
Vernacular (*recognized as
Federal style in NR historic
district designation report)
c.1829; altered c.1870,
and 1920



6 Morton Street
Altered Federal, now
Utilitarian
1836; altered 1889,
c.1930s, and 1943



8 Morton Street
Altered Federal, with
Greek Revival and
Italianate details
1833; altered 1871, 1935,
and 1942



16 Morton Street
Altered Federal, now
Utilitarian
c.1829; altered 1928, 1935



311 Sixth Avenue
Altered Federal
c.1828; altered 1925



313 Sixth Avenue
Altered Federal/Italianate
c.1828; altered 1866



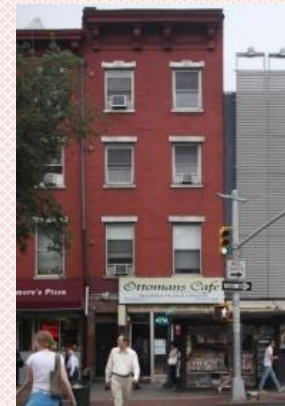
315 Sixth Avenue
Altered Federal/Italianate
c.1828; altered c.1864



317 Sixth Avenue
Altered Federal/Italianate
c.1828; altered c.1864 and 1998



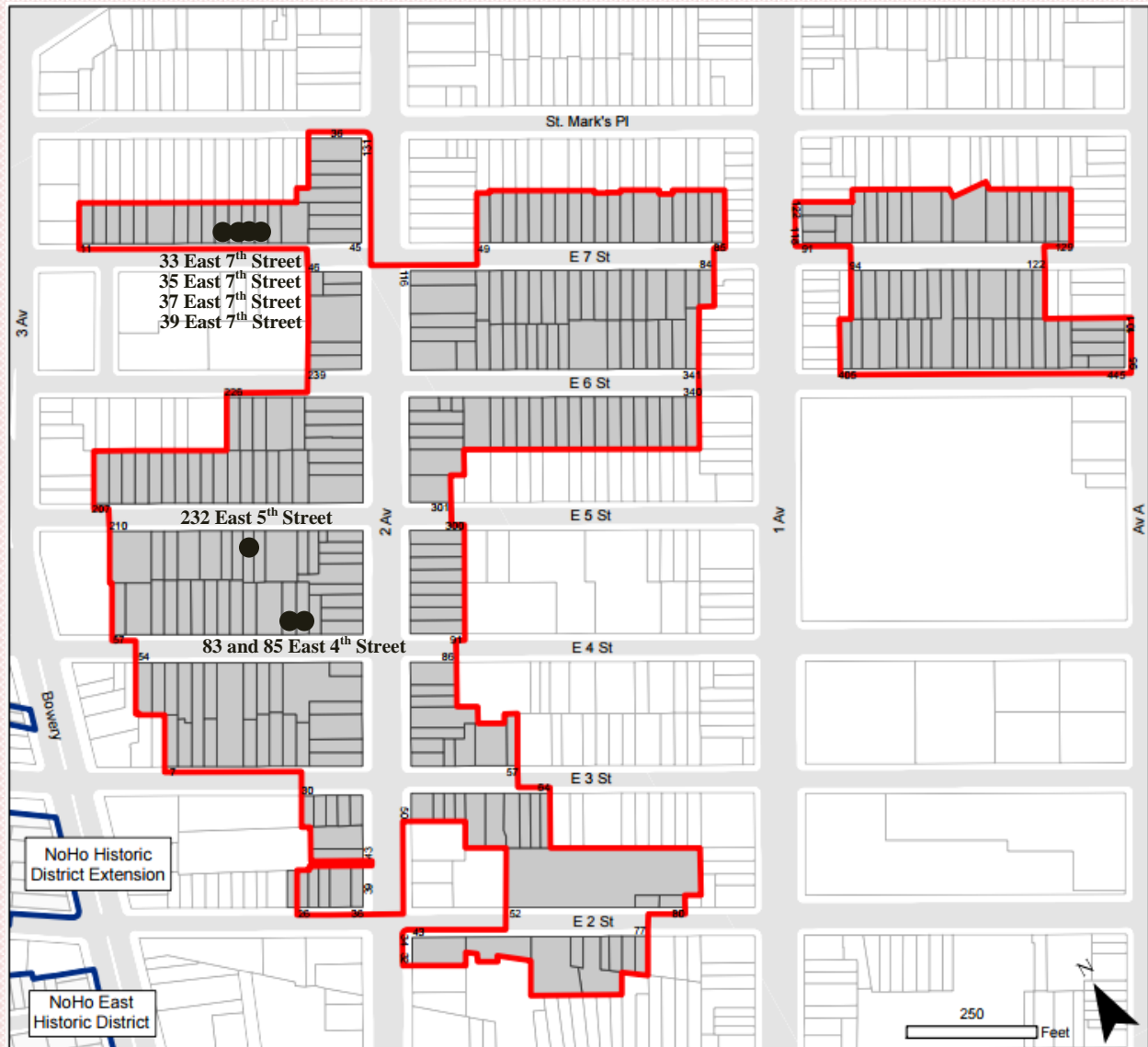
319 Sixth Avenue
Altered Federal/Italianate
c.1828; altered c.1864



321 Sixth Avenue
Altered Federal/Italianate
c.1828; altered c.1864

East Village/Lower East Side Historic District (2012)

Map of Federal Houses Located within East Village / Lower East Side Historic District



Description of East Village/Lower East Side Historic District:

GVSHP has advocated for expanded landmark protections in the [East Village](#). GVSHP strongly supported designation of this historic district in October, 2012, making it the largest in the East Village. GVSHP successfully advocated for a multi-building expansion of the proposed boundaries. Click [HERE](#) for the East Village/Lower East Side Historic District designation report.



83 East 4th Street
Altered Federal
c.1834-35



85 East 4th Street
Federal with Greek Revival and
Italianate alterations
c.1834-35



232 East 5th Street
Federal altered to Greek
Revival/Italianate
c.1830-31 with later alterations



33 East 7th Street
Federal with neo-Grec
elements
c.1832-33; altered prior to
1902

35 East 7th Street
Federal with Italianate and
Renaissance Revival
elements and alterations
c.1832-33; altered prior to
1909

37 East 7th Street
Federal with alterations
c.1832-33; altered prior to
1912

39 East 7th Street
Federal with Renaissance
Revival elements and
alterations
c.1832-33, altered prior to
1904

South Village Historic District (2013)

Map of Federal Houses Located within South Village Historic District



Description of South Village Historic District:

In 2013, the City landmarked another part (phase II) of GVSHP's proposed [South Village](#) Historic District (Click [HERE](#) for report) as a new South Village Historic District. This 240-building, 13-block district became the largest expansion of landmark protections in Greenwich Village since 1969. Click [HERE](#) for the South Village Historic District designation report.



144-146 Bleecker Street

Late Federal with Colonial Revival elements and alterations
c.1830-31; altered 1920



145 Bleecker Street

Transitional Federal/Greek Revival with alterations
c.1831



147 Bleecker Street

Stripped transitional Federal/Greek Revival
c.1831; altered 1872



149 Bleecker Street

Transitional Federal/Greek Revival with alterations
c.1831



155 Bleecker Street

Federal altered to Greek Revival
1835; altered prior to 1890



157 Bleecker Street

Federal altered to Greek Revival
1835; altered mid-19th century



200-202 Bleecker Street

Altered Federal
1825-26; altered 1997



5-7 Minetta Street

Altered Federal
c.1834 (No.5), c.1836-37 (No.7),
and c.1841 (No.5 Rear)



125 MacDougal Street

Federal with Second Empire elements
c.1828-29



★ *127 MacDougal Street*
See “Individual Landmarks”

★ *129 MacDougal Street*
See “Individual Landmarks”

★ *131 MacDougal Street*
See “Individual Landmarks”



146 West 4th Street
Altered Federal
c.1828; altered 1917



90 West Houston Street
Altered Federal with Second
Empire elements
c.1828; altered 1871



92 West Houston Street
Altered Federal
c.1828; altered 1925



94 West Houston Street
Altered Federal
c.1828; altered 1924



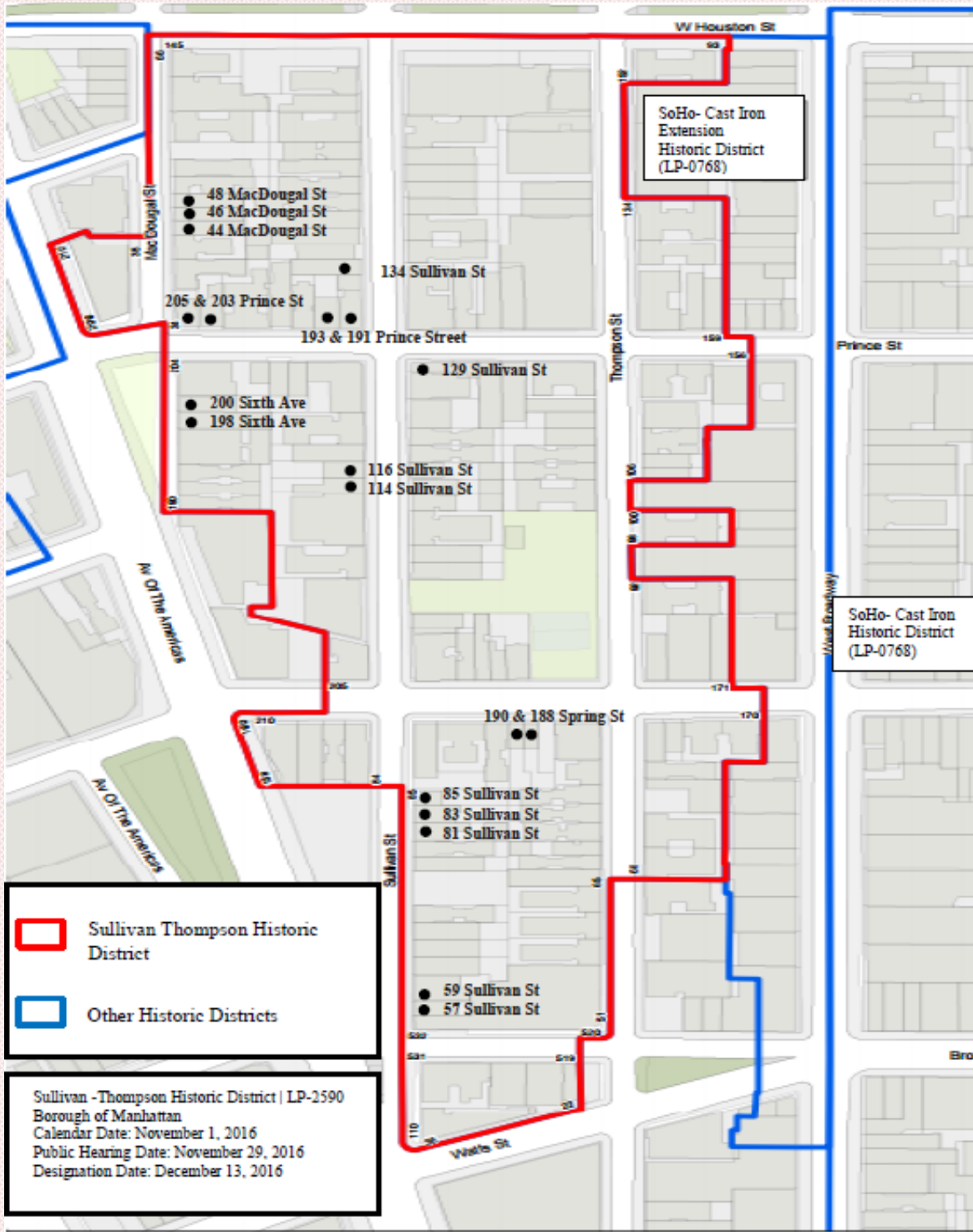
96 West Houston Street
Altered Federal
c.1831



114 West Houston Street
Stripped Federal/Greek Revival
c.1833

Sullivan-Thompson Historic District (2016)

Map of Federal Houses Located within Sullivan-Thompson Historic District



Description of Sullivan-Thompson Historic District:

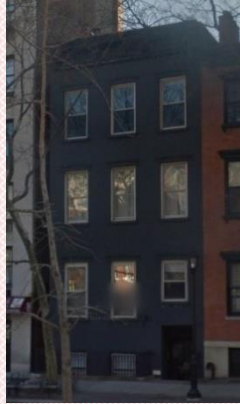
In December of 2016, the City designated more than 90% the final part (phase III) of GVSHP's proposed South Village Historic District as the Sullivan-Thompson Historic District

Click [HERE](#) for the Sullivan-Thompson Historic District designation report.



198 Avenue of the Americas

Federal with alterations
c.1832; altered c. 1925, c.
1932



200 Avenue of the Americas

Federal with alterations c.
1832; altered 1882, 1929



44 MacDougal Street

Federal with alterations
c.1826; altered 1875



46 MacDougal Street

Federal with alterations
c.1826; altered 1875,
1914, 1969



48 MacDougal Street

Altered Federal
c.1826; altered 1876,
1914



191 Prince Street

Federal with alterations
c.1827; altered 1863, 1906



193 Prince Street

Altered Federal
c.1827; redesigned c.
1940, c. 1980



203 Prince Street

*Individual landmark
designated in 1974
Transitional
Federal/Greek Revival
with Alterations
c. 1833; altered 1888



205 Prince Street
Transitional
Federal/Greek
c. 1833; altered 1975



186 Prince Street (129 Sullivan Street)
Federal with alterations
c. 1830; altered 1866, 1869



188 Spring Street
Altered Federal
c. 1824



190 Spring Street
Altered Federal
c. 1824; altered c. 1962



57 Sullivan Street
See "Individual Landmarks"
Federal c. 1816; altered 1842, 1875



59 Sullivan Street
Federal with alterations
c. 1820; altered 1876, 1903



81 Sullivan Street
Altered Federal
c. 1835



83 Sullivan Street
*Individual landmark designated in 1973
Federal c. 1819; altered 1880



85 Sullivan Street
*Individual landmark designated in 1973
Federal c. 1825; altered 1874



114 Sullivan Street
Federal with alterations
c. 1832; altered 1898



116 Sullivan Street
*Individual landmark designated in 1973
Federal with Greek revival alterations c. 1832; altered 1872



134 Sullivan Street
Federal
c. 1826

Map of South Village National Register Historic District



Description of South Village National Register Historic District:

GVSHP proposed the South Village Historic District in 2006, and in 2013 New York State accepted the nomination for almost the entire district to be listed on the State and National Registers of Historic Places.

Click [HERE](#) for the South Village National Register Historic District designation report.

Federal houses that are only in the National Register historic district:



130 West Houston Street
Federal style with alterations and redesign c.1820s; rear addition is non-contributing



132 West Houston Street
Federal style with alterations and redesign c.1820s



134 West Houston Street
Federal style with alterations and redesign c.1820s; altered 1933



136 West Houston Street
Federal style with alterations and redesign c.1820s; altered 1933



138 West Houston Street
Federal style with alterations and redesign c.1820s; altered 1933



140 West Houston Street
Federal style with alterations and redesign c.1820s



142 West Houston Street
Federal style with alterations and redesign c.1820s

Federal houses in South Village State and National Register District that are also in other designated New York City historic districts:



2 Bedford Street
See "Greenwich Village
Historic District
Extension II (2010)"



4 Bedford Street
See "Greenwich Village
Historic District
Extension II (2010)"



6 Bedford Street
See "Greenwich Village
Historic District
Extension II (2010)"



8 Bedford Street
See "Greenwich Village
Historic District
Extension II (2010)"



10 Bedford Street
See "Greenwich Village
Historic District
Extension II (2010)"



23 Bedford Street
See "Greenwich Village
Historic District
Extension II (2010)"



25 Bedford Street
See "Greenwich Village
Historic District
Extension II (2010)"



27 Bedford Street
See "Greenwich Village
Historic District
Extension II (2010)"



36 Bedford Street
See "Greenwich Village
Historic District"



38 Bedford Street
See "Greenwich Village
Historic District"



40 Bedford Street
See "Greenwich Village
Historic District"



42 Bedford Street
See "Greenwich Village
Historic District"

Extension II (2010)"



144-146 Bleecker Street
See "South Village
Historic District (2013)"

Extension II (2010)"



145 Bleecker Street
See "South Village
Historic District (2013)"

Extension II (2010)"



147 Bleecker Street
See "South Village
Historic District (2013)"

Extension II (2010)"



149 Bleecker Street
See "South Village
Historic District (2013)"



155 Bleecker Street
See "South Village
Historic District (2013)"



157 Bleecker Street
See "South Village
Historic District (2013)"



200-202 Bleecker Street
See "South Village
Historic District (2013)"



233-237 Bleecker Street
See "Greenwich Village
Historic District
Extension II (2010)"



239 Bleecker Street
See "Greenwich Village
Historic District
Extension II (2010)"



241 Bleecker Street
See "Greenwich Village
Historic District
Extension II (2010)"



243 Bleecker Street
See "Greenwich Village
Historic District
Extension II (2010)"



245 Bleecker Street
See "Greenwich Village
Historic District
Extension II (2010)"



247 Bleecker Street
See "Greenwich Village
Historic District
Extension II (2010)"



249 Bleecker Street
See "Greenwich Village
Historic District
Extension II (2010)"



251 Bleecker Street
See "Greenwich Village
Historic District
Extension II (2010)"



253 Bleecker Street
See "Greenwich Village
Historic District
Extension II (2010)"



257 Bleecker Street
See "Greenwich Village
Historic District
Extension II (2010)"



260 Bleecker Street
See "Greenwich Village
Historic District
Extension II (2010)"



262 Bleecker Street
See "Greenwich Village
Historic District
Extension II (2010)"



264 Bleecker Street
See "Greenwich Village
Historic District
Extension II (2010)"



265-267 Bleecker Street
See "Greenwich Village
Historic District
Extension II (2010)"



266 Bleecker Street
See "Greenwich Village
Historic District
Extension II (2010)"



268 Bleecker Street
See "Greenwich Village
Historic District
Extension II (2010)"



269 Bleecker Street
See "Greenwich Village
Historic District
Extension II (2010)"



270 Bleecker Street
See "Greenwich Village
Historic District
Extension II (2010)"



271 Bleecker Street
See "Greenwich Village
Historic District
Extension II (2010)"



275 Bleecker Street
See "Greenwich Village
Historic District
Extension II (2010)"



281 Bleecker Street
See "Greenwich Village
Historic District
Extension II (2010)"



282 Bleecker Street
See "Greenwich Village
Historic District
Extension II (2010)"



42 Carmine Street
See "Greenwich Village
Historic District
Extension II (2010)"



44 Carmine Street
See "Greenwich Village
Historic District
Extension II (2010)"



46 Carmine Street
See "Greenwich Village
Historic District
Extension II (2010)"



49 Carmine Street
See "Greenwich Village
Historic District
Extension II (2010)"



29 Downing Street
See "Greenwich Village
Historic District
Extension II (2010)"



31 Jones Street
See "Greenwich Village
Historic District Extension
II (2010)"



7 Leroy Street
See "Greenwich Village
Historic District
Extension II (2010)"



9 Leroy Street
See "Greenwich Village
Historic District
Extension II (2010)"



13 Leroy Street
See "Greenwich Village
Historic District
Extension II (2010)"



30 Leroy Street
Federal style
See "Greenwich Village
Historic District Extension
II (2010)"



125 MacDougal Street
See "South Village
Historic District (2013)"



127 MacDougal Street
See "Individual
Landmarks"



129 MacDougal Street
See "Individual
Landmarks"



131 MacDougal Street
See "Individual
Landmarks"



313 Sixth Avenue
See "Greenwich Village
Historic District
Extension II (2010)"



315 Sixth Avenue
See "Greenwich Village Historic
District Extension II (2010)"



317 Sixth Avenue
See "Greenwich Village Historic
District Extension II (2010)"



319 Sixth Avenue
See "Greenwich Village Historic
District Extension II (2010)"



321 Sixth Avenue

See "Greenwich Village Historic District Extension II (2010)"



146 West 4th Street

See "South Village Historic District (2013)"



90 West Houston Street

See "South Village Historic District (2013)"



92 West Houston Street

See "South Village Historic District (2013)"



94 West Houston Street

See "South Village Historic District (2013)"



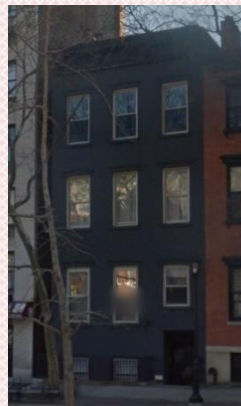
96 West Houston Street

See "South Village Historic District (2013)"



198 Avenue of the Americas

See "Sullivan-Thompson Historic District (2016)"



200 Avenue of the Americas

See "Sullivan-Thompson Historic District (2016)"



44 MacDougal Street

See "Sullivan-Thompson Historic District (2016)"



46 MacDougal Street

See "Sullivan-Thompson Historic District (2016)"



48 MacDougal Street
See "Sullivan-Thompson
Historic District (2016)"



191 Prince Street
See "Sullivan-Thompson
Historic District (2016)"



193 Prince Street
See "Sullivan-Thompson
Historic District (2016)"



203 Prince Street
See "Sullivan-Thompson
Historic District (2016)"



205 Prince Street
See "Sullivan-Thompson
Historic District (2016)"



*186 Prince Street (129
Sullivan Street)*
See "Sullivan-Thompson
Historic District (2016)"



188 Spring Street
See "Sullivan-Thompson
Historic District (2016)"



190 Spring Street
See "Sullivan-Thompson
Historic District (2016)"



57 Sullivan Street
See "Sullivan-Thompson
Historic District (2016)"



59 Sullivan Street
See "Sullivan-Thompson
Historic District (2016)"



81 Sullivan Street
See "Sullivan-Thompson
Historic District (2016)"



83 Sullivan Street
See "Sullivan-Thompson
Historic District (2016)"



85 Sullivan Street
See "Sullivan-Thompson
Historic District (2016)"



114 Sullivan Street
See "Sullivan-Thompson
Historic District (2016)"



116 Sullivan Street
See "Sullivan-Thompson
Historic District (2016)"



134 Sullivan Street
See "Sullivan-Thompson
Historic District (2016)"

**The Greenwich Village Society for
Historic Preservation was founded in
1980 to preserve the
architectural heritage and cultural
history of
Greenwich Village, the East Village, and
NoHo.**

**Greenwich Village Society for Historic Preservation
232 East 11th Street
New York, NY 10003
(212) 475-9585
www.gvshp.org
info@gvshp.org**



/gvshp



/gvshp_nyc



www.gvshp.org/donate