



NYC Parks

JANE STREET GARDEN

Located at the corner of 8th Avenue and Jane Street
in the West Village, borough of Manhattan

Landmarks Preservation Committee
November 10, 2015
George Vellonakis, Laura Drawbaugh
Parks Capital Design

GOALS

- Create an attractive garden perimeter and welcoming entrance
 - New fence and gate
 - Relocated entrance

CONSTRUCTION BUDGET: \$140,000 Council funded

PROJECT SIZE: 0.05 ac





NEW YORK

2000'



WEST VILLAGE

200'



JANE STREET GARDEN

20'



JANE STREET GARDEN | Project Location

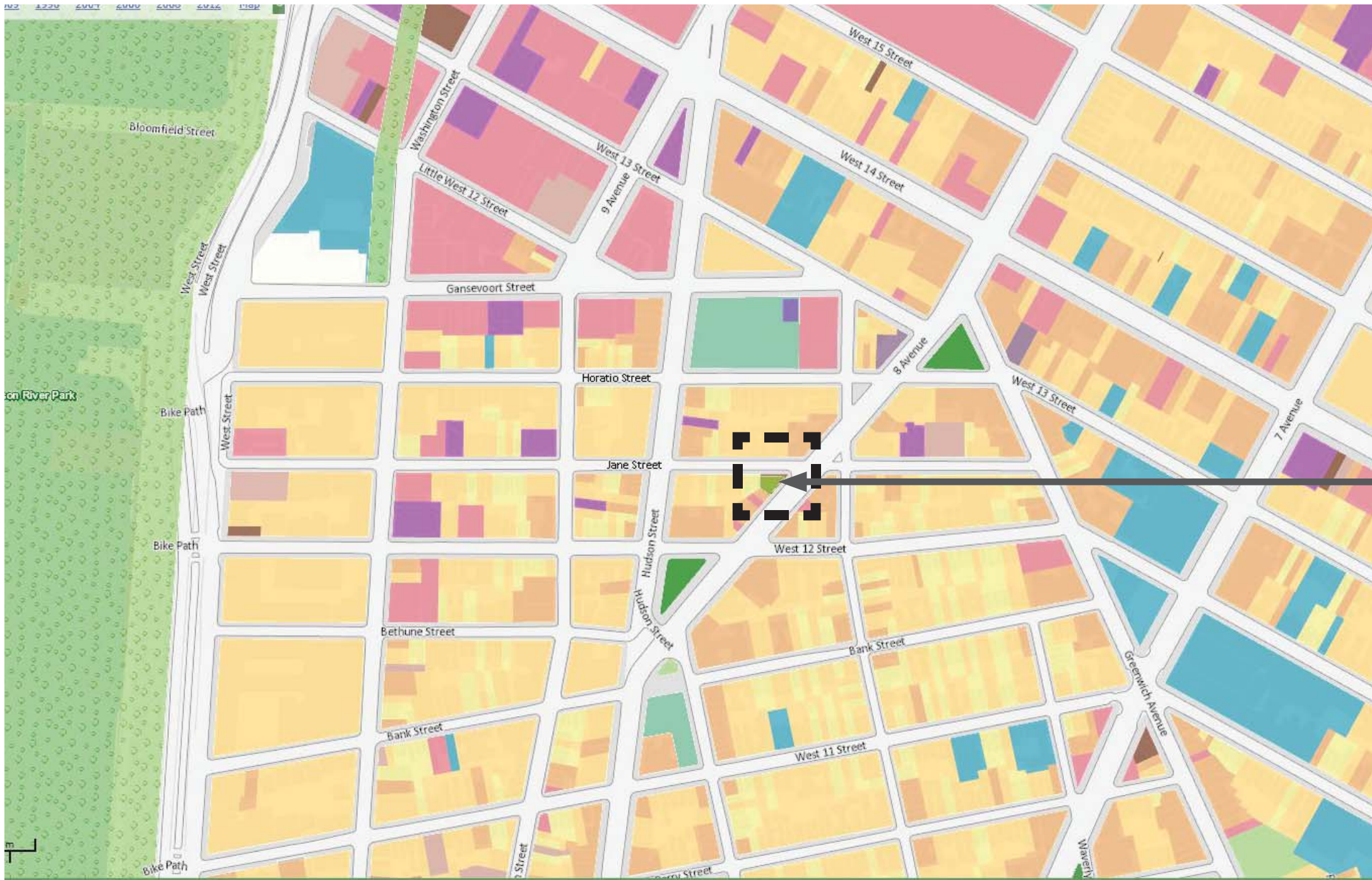


FLOOD HAZARD ZONES

- **ZONE A** - 1% annual-chance flood event. No Base Flood Elevation (BFE) exists.
- **ZONE AE** - 1% annual-chance flood event. BFE exists.
- **ZONE AO** - 1% annual-chance shallow flooding.
- **VE** - Areas along coasts subject to inundation by the 1% annual-chance flood event with additional hazards associated with storm-induced velocity wave action. BFE exists.
- ▨ **FLOODWAY** - watercourse reserved to discharge base flood.
- **ZONE X** - Moderate risk areas within the 0.2% annual-chance floodplain.

▲ **LIMIT OF MODERATE WAVE ACTION**

Jane Street Garden



LAND USE CATEGORIES

- 1 AND 2 FAMILY RESIDENTIAL
- MULTI-FAMILY RESIDENTIAL
- MIXED USE
- OPEN SPACE AND OUTDOOR RECREATION
- COMMERCIAL
- INSTITUTIONAL
- INDUSTRIAL
- PARKING
- TRANSPORTATION / UTILITIES
- VACANT LOTS

Jane Street Garden



JANE STREET GARDEN | Surrounding Land Use





Jane Street Garden

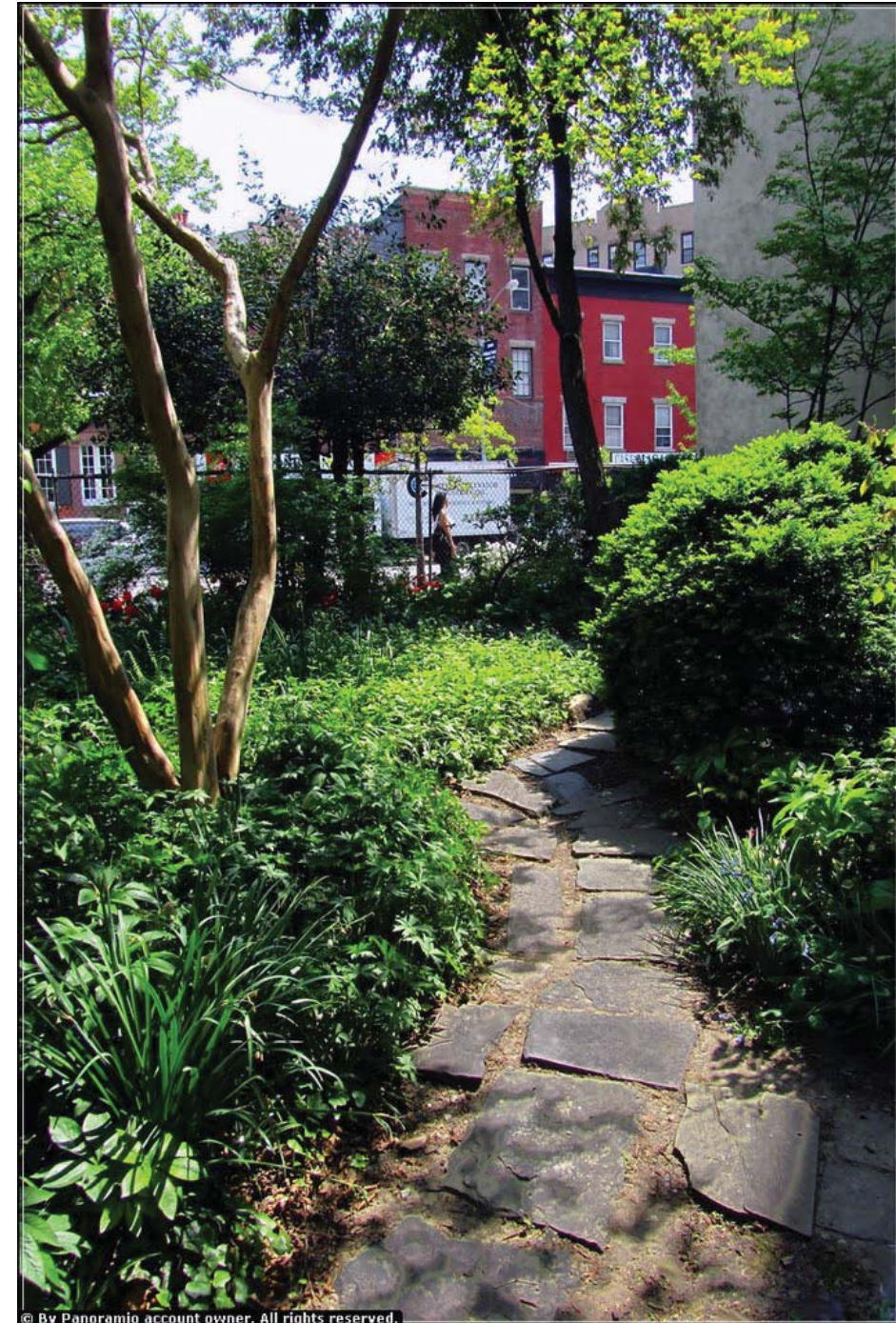
Greenwich Village Historic District, Manhattan
Designated April 29, 1969



JANE STREET GARDEN | Site History



The Jane Street Block Association started this garden in 1973, when it was a burned-out property owned by St. Vincent's Hospital. After many fights, internal and external, the land is now owned by the city and is a Green Thumb garden.







1 LOOKING INTO GARDEN FROM THE NORTH CORNER



JANE STREET GARDEN | Site Photographs

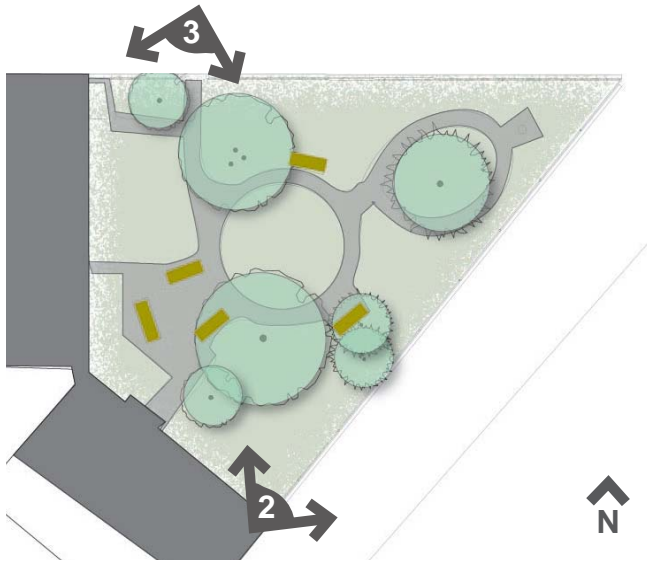




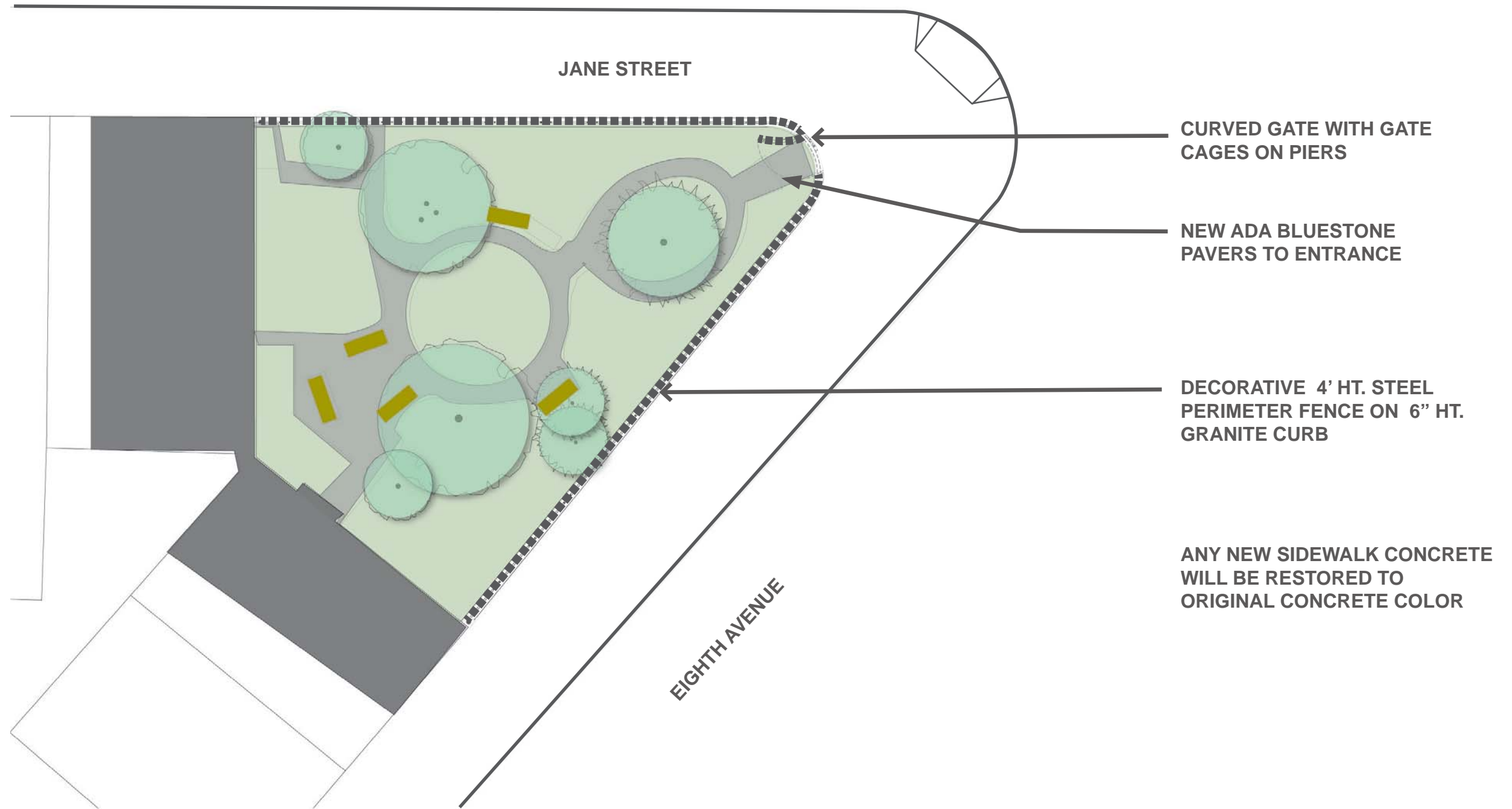
2 LOOKING NORTH ON EIGHTH AVENUE



3 LOOKING WEST ON JANE STREET - ENTRANCE GATE IS HARD TO FIND

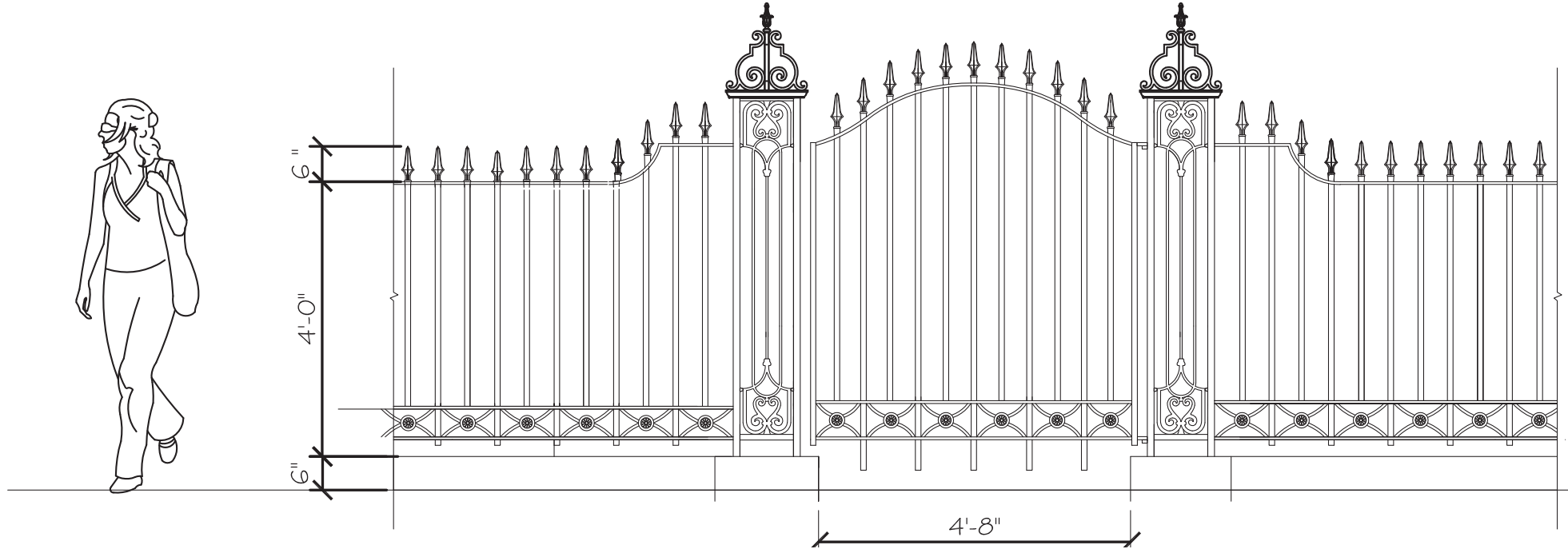


JANE STREET GARDEN | Site Photographs





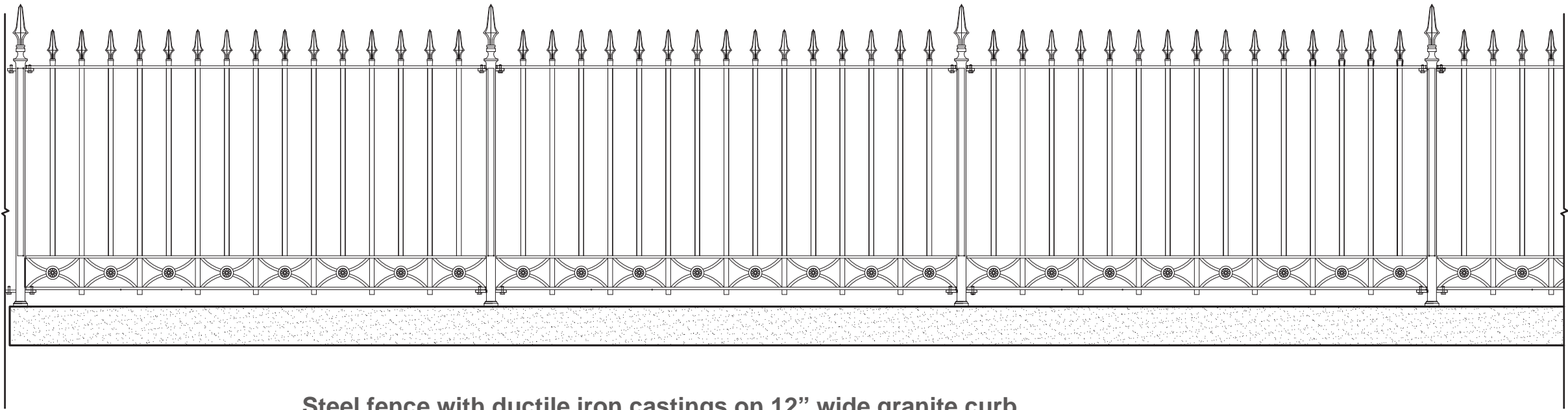
Example of a gate cage
(Christopher Park)



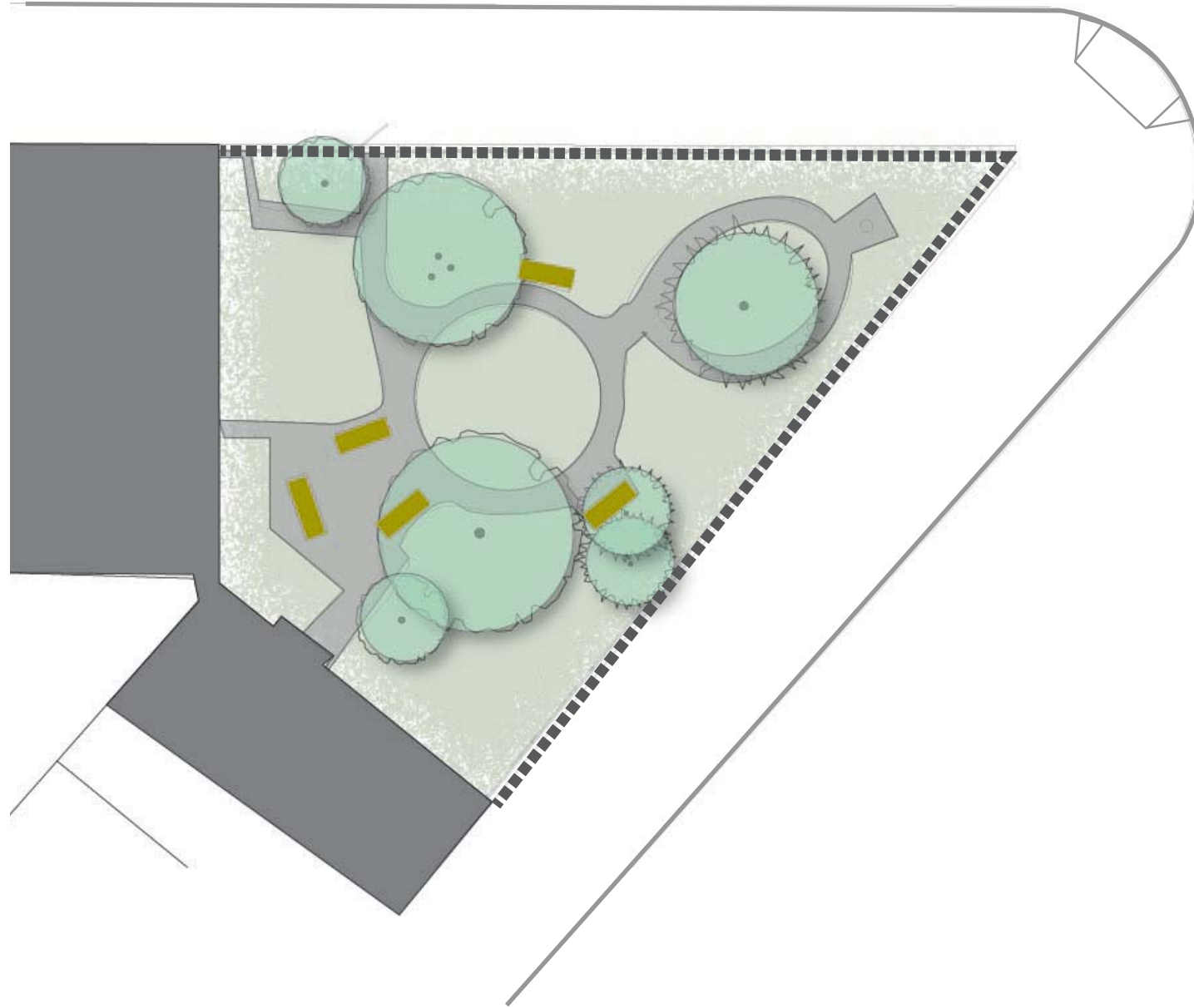
Curved gate with ornate cage posts on piers



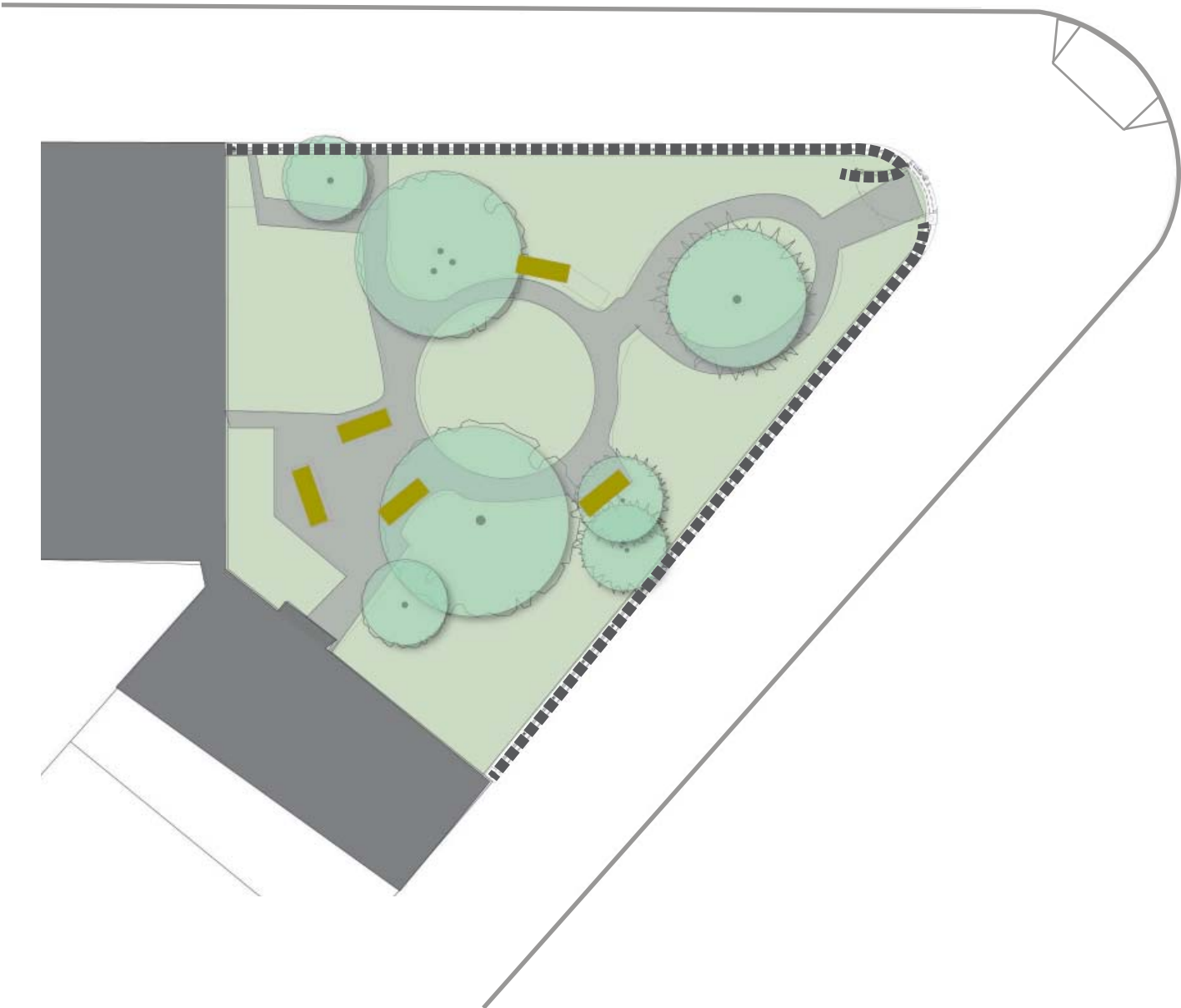
Example of finial



Steel fence with ductile iron castings on 12" wide granite curb



Existing Plan



Proposed Plan