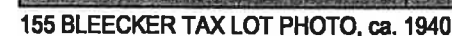


MECHANICAL ENGINEER:



- | | |
|-------|---|
| A-001 | PLOT PLAN, NOTES, INDEX OF DRAWINGS, PHOTOS, MAPS |
| A-100 | PROPOSED FLOOR PLAN |
| A-200 | PROPOSED ELEVATIONS |
| A-800 | SIGNAGE DETAILS & RENDERINGS |

SCOPE OF WORK

- ## 1. NEW VERTICAL NEON SIGNAGE

APPLICATIONS

- 1.
- STOREFRONT WORK APPROVED UNDER #**

HISTORY

(FROM THE LANDMARK DESIGNATION REPORT)

Date: 1835 (original); prior to 1890 (alteration)
Architect/Builder: Not determined (1835; prior to 1890)
Original Owner: Charles Butler (1835); not determined (prior to 1890)
Type: Row house
Style: Federal altered to Greek Revival with alterations
Stories: 4
Material(s): Brick
Decorative Metal Work: Paneled cast-iron pillar at corner of south and east facades at commercial entry, decorative cast-iron columns within storefront (not visible at time of designation)
Significant Architectural Features: Flemish bond brickwork at first through third stories; Greek Revival style lintels, sills, and cornice; gabled roof

Alterations:

Apparently raised a story (prior to 1890; see Building Notes); stoop removed, first story lowered, new first-story entry installed, and storefront altered (ALT 2006-1890; first story altered again numerous times thereafter); lintels and sills replaced and/or replaced (c. 2008-13); historic cornice removed and replaced with small non-historic molded cornice (after c. 1939 tax photograph but prior to c. 1980s tax photograph); replaced sashes (multi-paned double-hung sashes present in c. 1939 tax photograph); some screen windows; antennae on roof (visible from street); small rectangular opening above storefront towards eastern end of facade; light at residential entry; intercom at residential entry; neon commercial signage at storefront; wrap-around awning and commercial signage at storefront.

Building Notes:

Drawing records:
Tax records indicate this house (originally 153 Bleecker Street) was constructed in 1835, as was the neighboring building at 157 Bleecker Street (originally 155 Bleecker Street). The building footprints as drawn on the Perrie atlas of 1852 seem to indicate that the two houses may have been identical in appearance, though apparently constructed for different owners. The Flemish bond brickwork indicates that it was originally a Federal style row house and that it was raised a story and received its Greek Revival style lintels and sills as part of a later alteration. The single-family home was probably converted to a multiple-dwelling prior to an 1890 alteration that removed the original stoop and lowered the first story to that of the store (ALT 2008-1890). This alteration notes the building as already four stories in height, occupied by a "store on the first floor" with a "dwelling above occupied by one or two families." A 1914 alteration application for 155 and 157 Bleecker Street indicates the possible presence of a "motion picture theater" (ALT 1107-1914).
References: New York City Department of Buildings

D.O.B. IDENTIFICATION NUMBER

[Home](#)
[About Us](#)
[Contact Us](#)
[Privacy Policy](#)
[Terms of Service](#)
[FAQ](#)
[Blog](#)
[Partners](#)
[Press](#)
[Careers](#)

STRUCTURAL ENGINEER

MECHANICAL ENGINEER-

155 BLEECKER STREET
NEW YORK, NY 10012

[illegible]

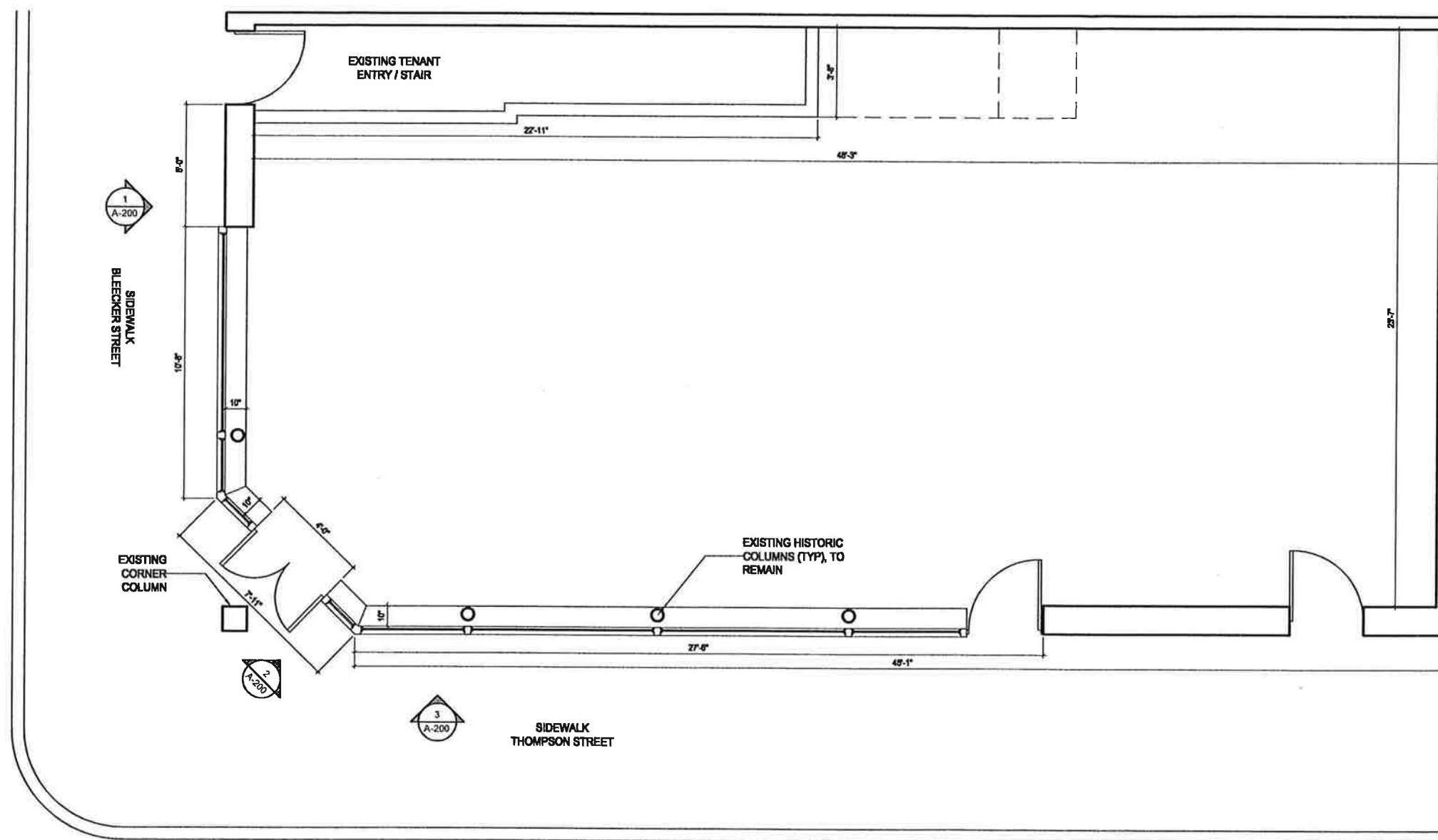
DWG. TITLE

SEAL & SIGNATURE	ISSUE DATE 07-22-2014
	SCALE 3/8"=1'-0"
	JOB NO 1406

DRAWING REFERENCE NO.

2 OF 4

D.O.B. IDENTIFICATION NUMBER



1 PROPOSED FLOOR PLAN
SCALE : 3/8" = 1'-0"

155 BLEECKER STREET
NEW YORK, NY 10012

[illegible]

155 BLEECKER STREET
NEW YORK, NY 10012

INDEX TITLE

PROPOSED ELEVATIONS

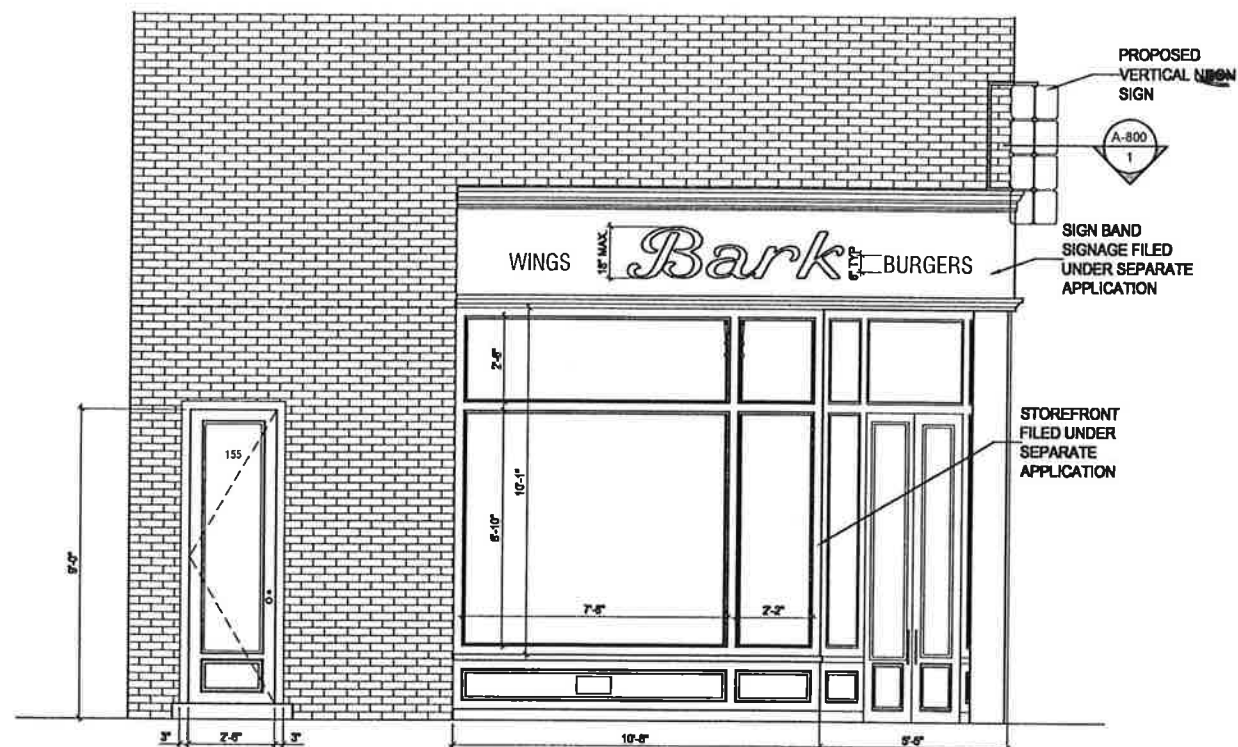
SEAL & SIGNATURE	ISSUE DATE	07-22-2014
	SCALE	3/8" = 1'-0"
	JOB NO.	1406

DRAWING REFERENCE NO.

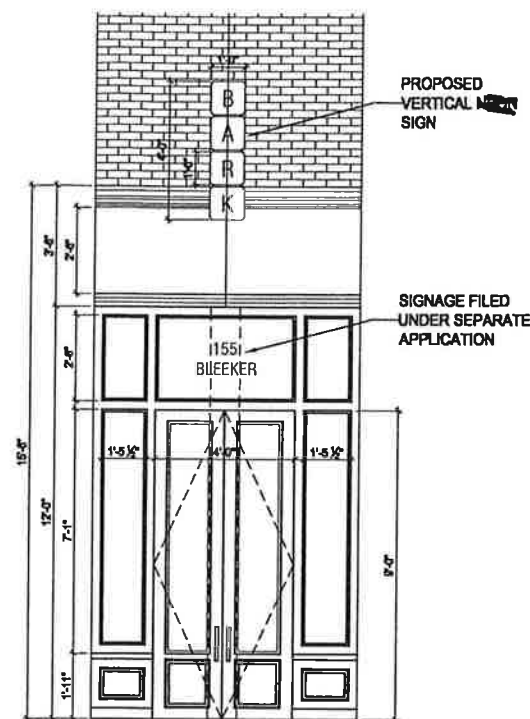
A-200.00

3 OF 4

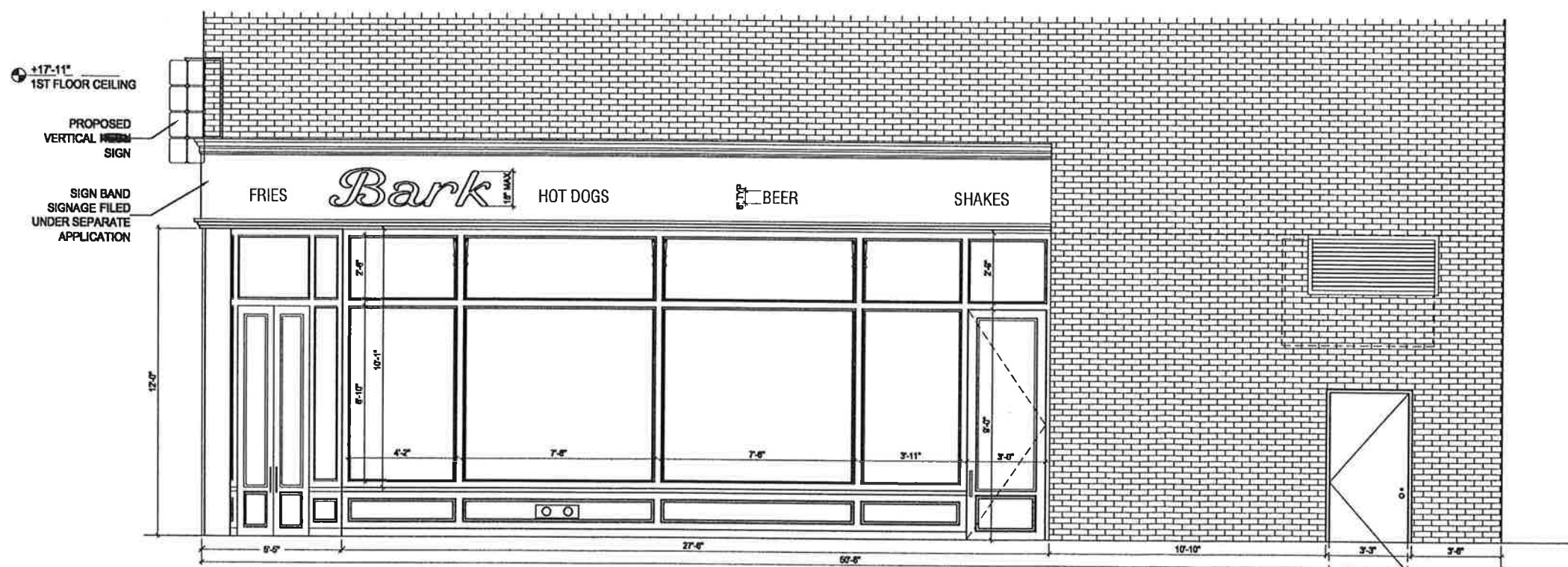
D.O.B. IDENTIFICATION NUMBER



1 PROPOSED BLEECKER STREET ELEVATION
SCALE : 3/8" = 1'-0"



2 PROPOSED CORNER ENTRY ELEVATION
SCALE : 3/8" = 1'-0"



3 PROPOSED THOMPSON STREET ELEVATION
SCALE : 3/8" = 1'-0"

MECHANICAL ENGINEER:

[illegible]

DWG TITLE

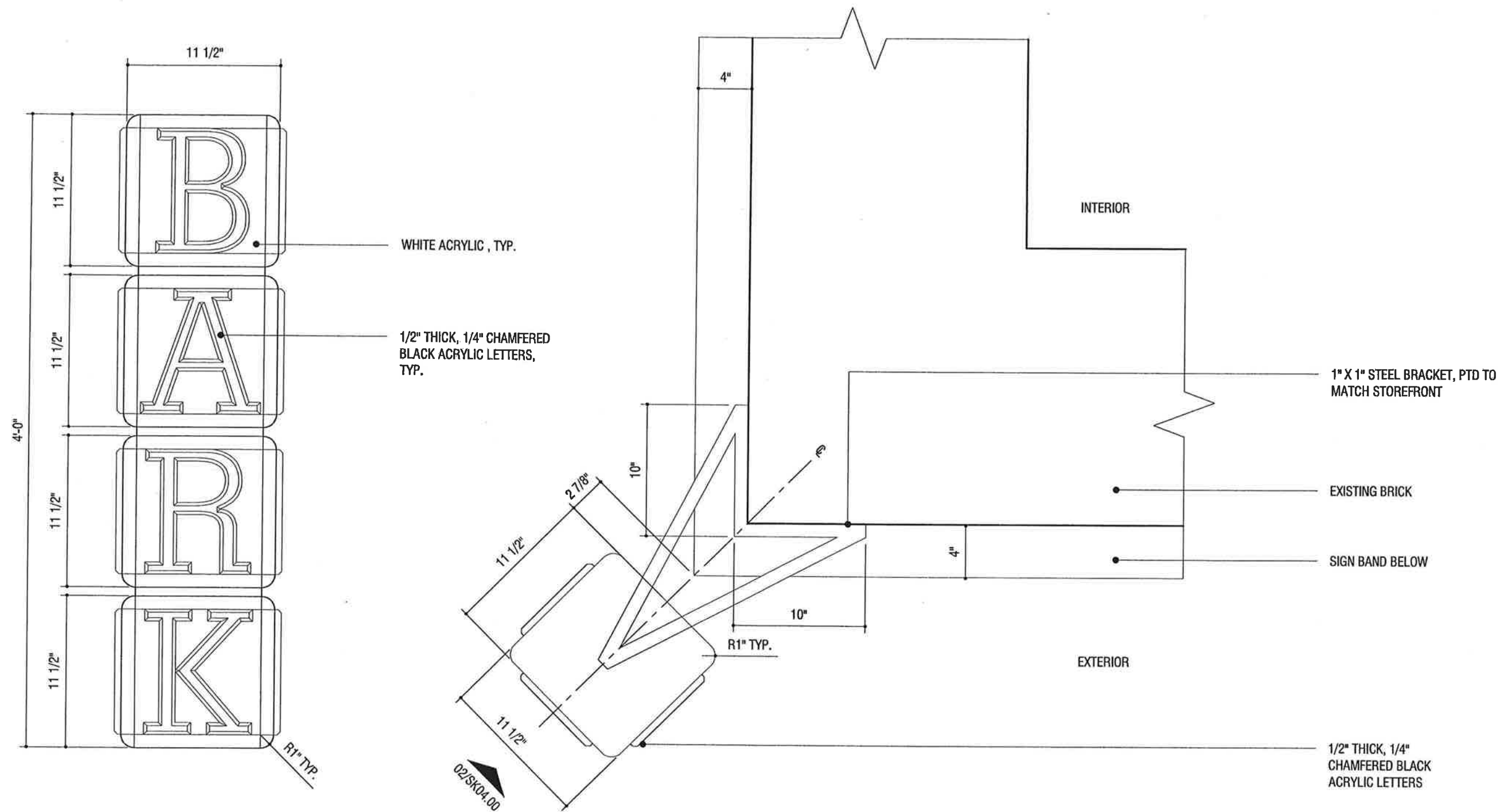
SEAL & SIGNATURE	ISSUE DATE	07-22-2014
	SCALE	AS NOTED
	JOB NO.	1406

DRAWING REFERENCE NO.

4 OF 4

D.O.B. IDENTIFICATION NUMBER





② CORNER SIGN ELEVATION
SCALE - 1 1/2" = 1'-0"

① CORNER SIGN PLAN
SCALE - 1 1/2" = 1'-0"

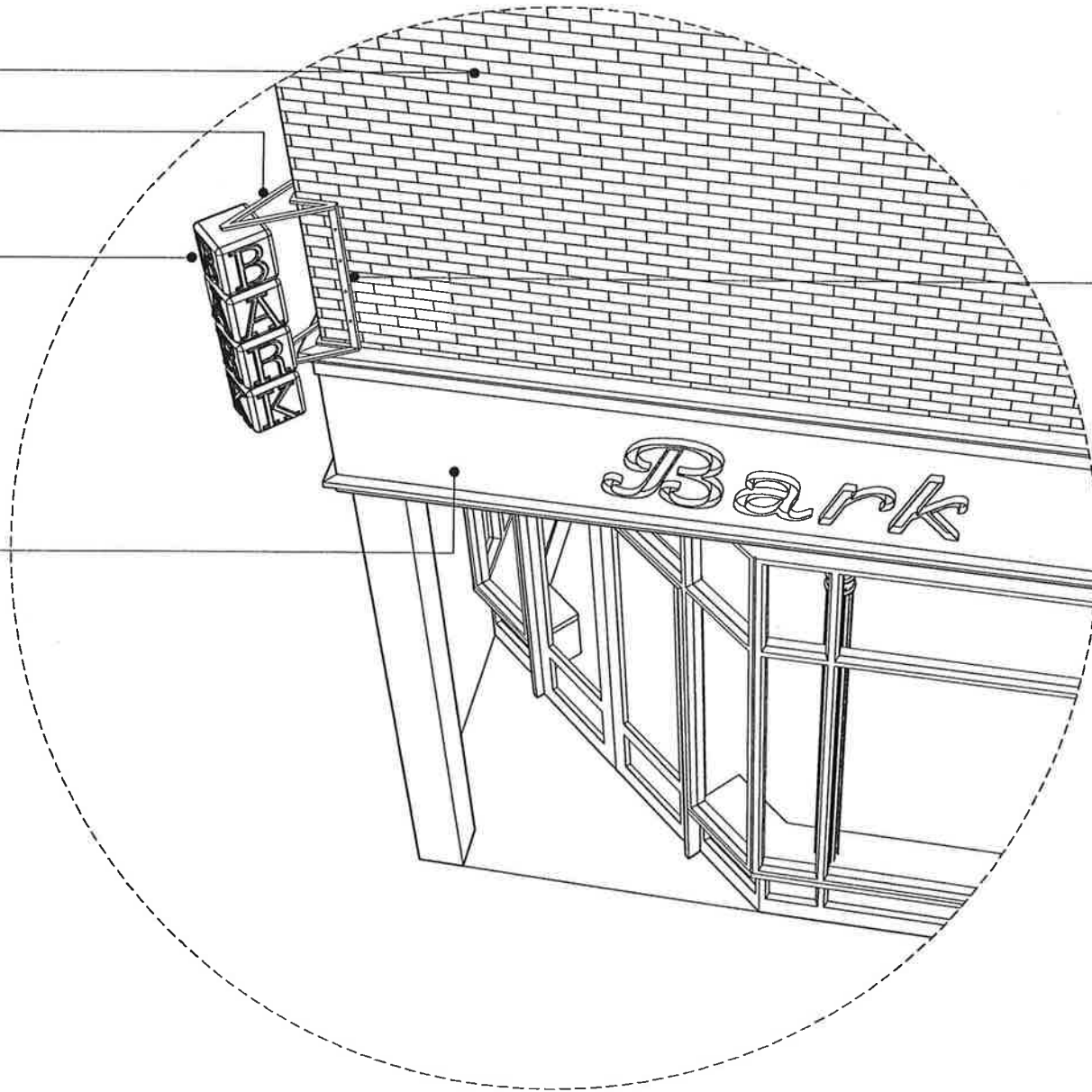
OS © Openshop 2014	Openshop 49 NASSAU STREET 5TH FLOOR NEW YORK, NY 10038 T 212.584.1180 make@ootlinks.com	BARK VILLAGE 155 BLEECKER STREET, NEW YORK, NY 10012	DATE 09.02.14 DRAWING NO SK04.00
------------------------------	---	--	--

EXISTING BRICK

STEEL BRACKET,
PTD TO MATCH
STOREFRONT

CORNER SIGNAGE

STEEL BANNER



① CORNER SIGNAGE AXON
NTS

4 ANCHOR BOLTS, SPACED AT EVERY 3 COURSES

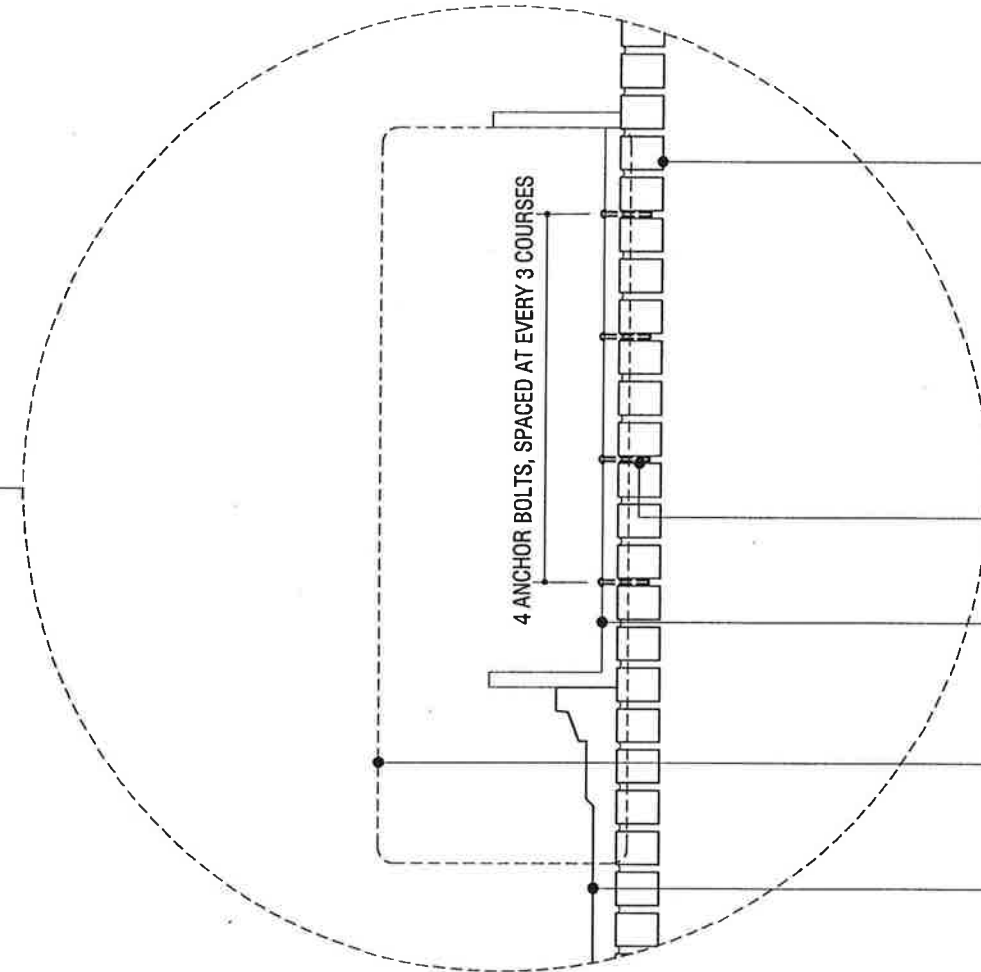
EXISTING BRICK

3/8" HILTI ANCHOR BOLT
THROUGH MORTAR

1" X 1" STEEL
BRACKET,
PTD TO MATCH
STOREFRONT

CORNER SIGNAGE

STEEL BANNER



② BRACKET ANCHOR DETAIL
1" = 1'-0"



Openshop

49 NASSAU STREET
5TH FLOOR
NEW YORK, NY 10038

T 212.584.1180
make@osthink.com

BARK VILLAGE

155 BLEECKER STREET, NEW YORK, NY 10012

DATE

09.02.14

DRAWING NO

SK03.00





BARK

WINGS *Bark*

BURGERS

FRIES

Bark

HOT DOGS

RIP

SHAKES

155
EELDER

