

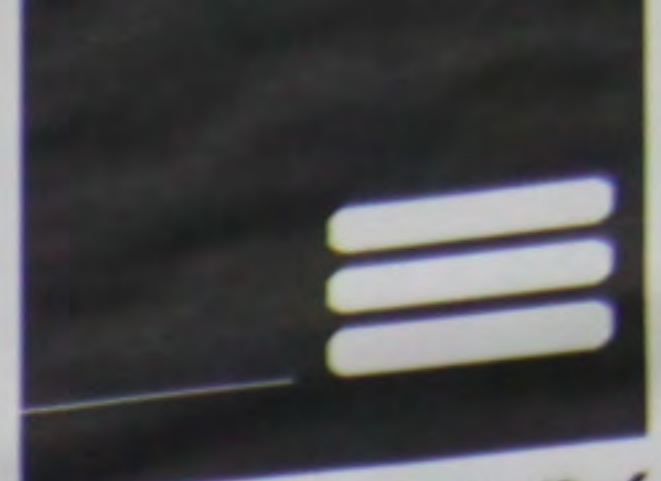


AtelierNY
architecture

EX FACADE CONTEXT

30 CARMINE ST
NY, NY 10014
BLOCK 527
LOT 68
CB 102





AtelierNY
architecture

EX FACADE CONTEXT

30 CARMINE ST
NY, NY 10014
BLOCK 527
LOT 68
CB 102





AtelierNY
architecture





30 Carmine Street, c. 1940



30 Carmine Street, c. 2009

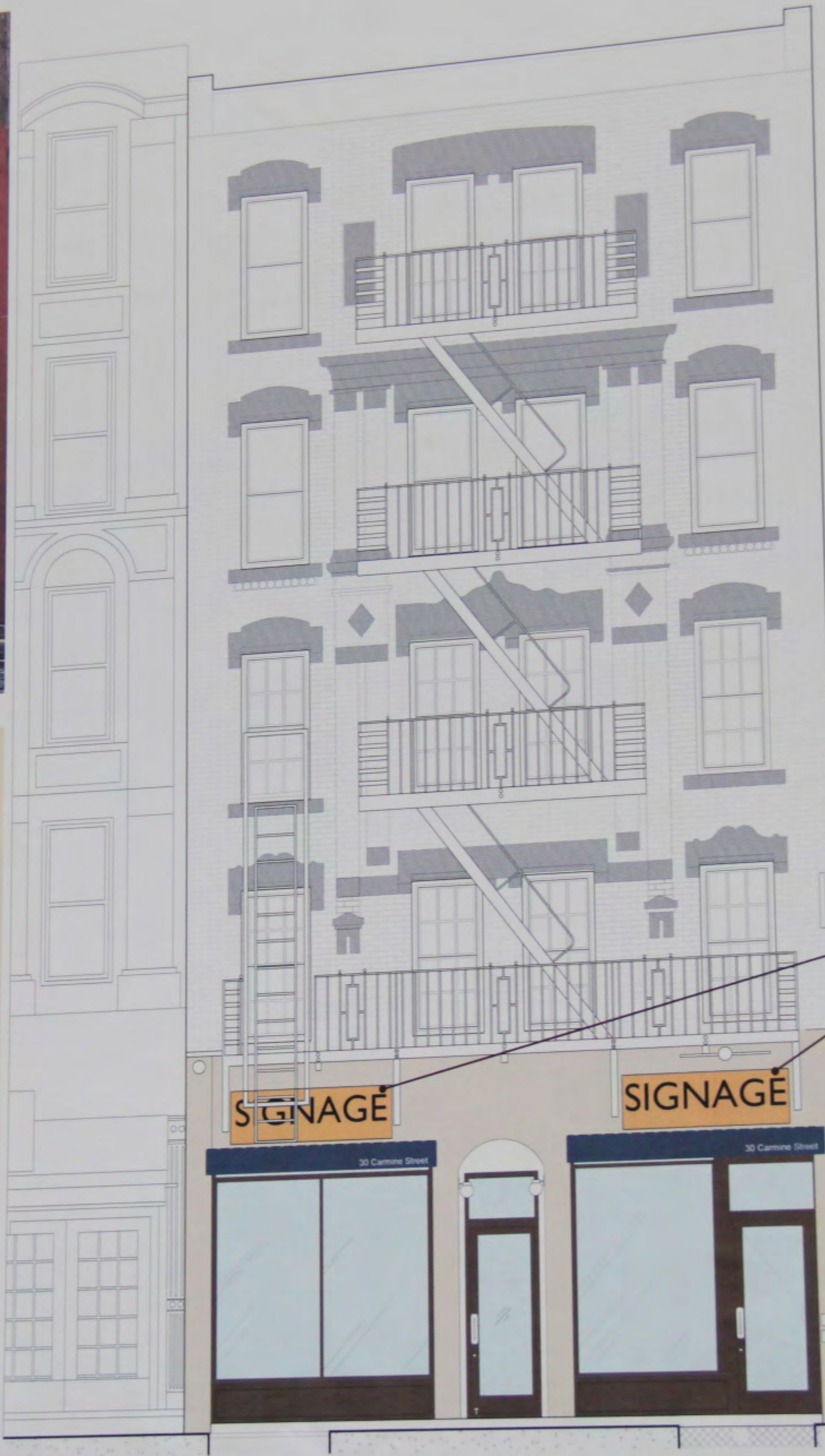
Atelier
architecte

EX FACADE

30 CARMINE
NY, NY
B

RENDERINGS

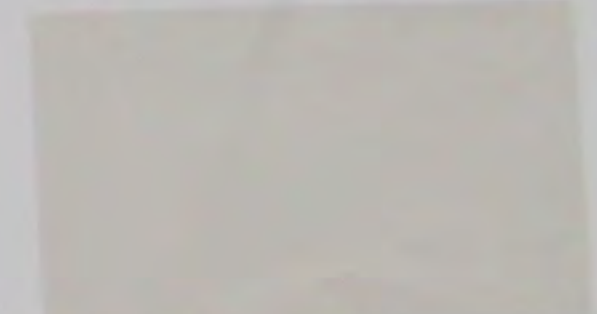
30 CARMINE ST
NY, NY 10014
BLOCK 527
LOT 68
CB 102



Wooden panel



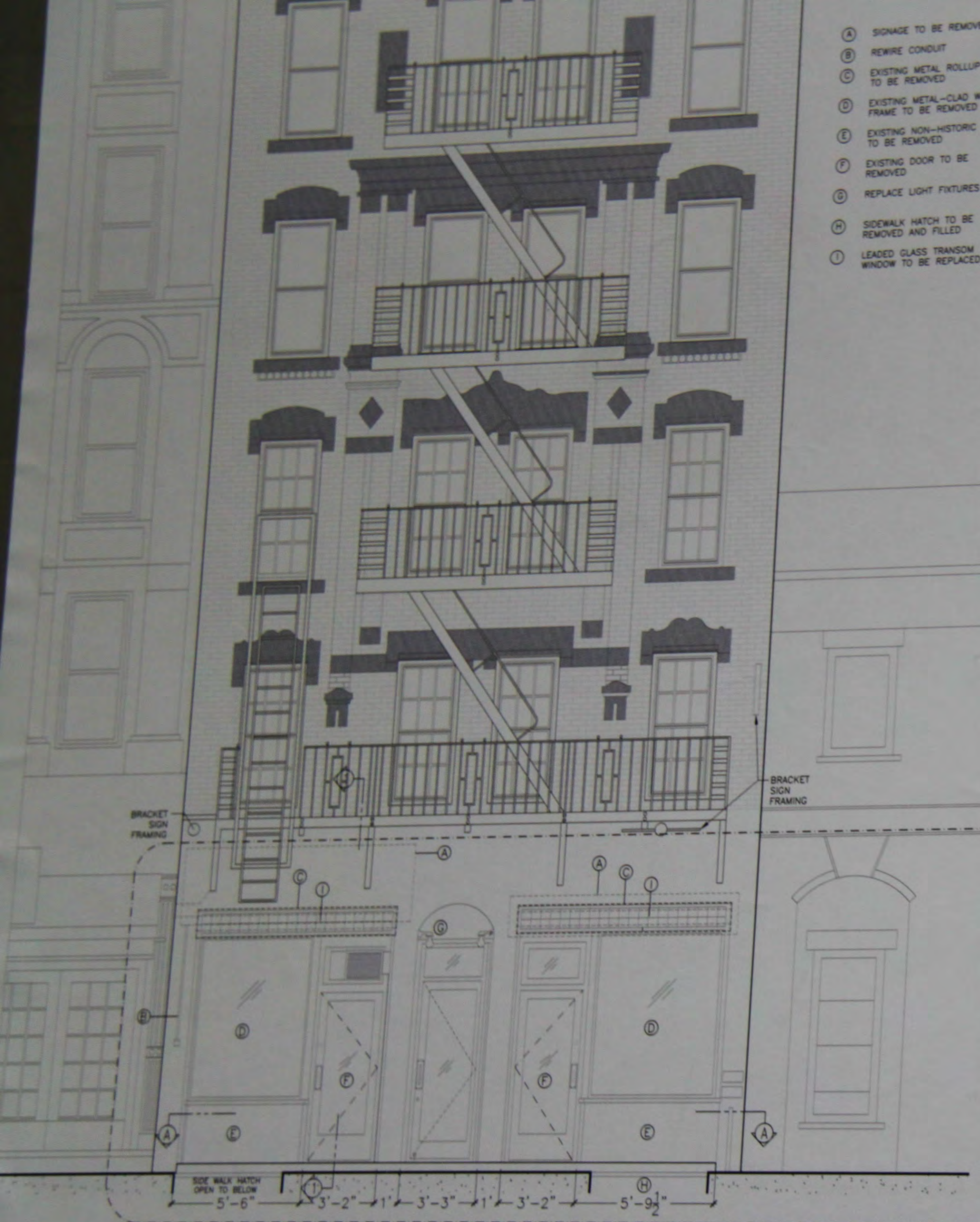
NAVY
by awning manufacturer



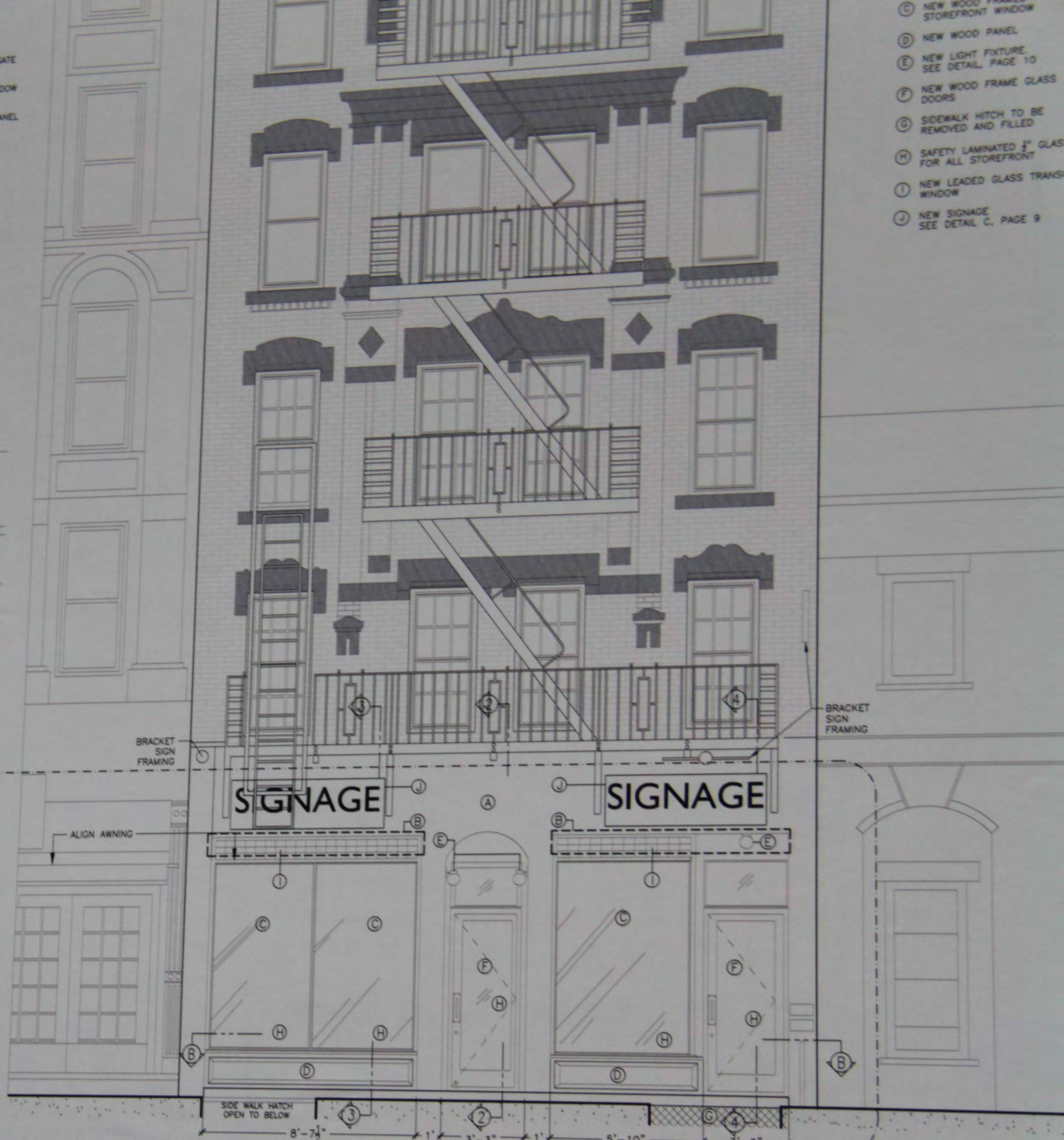
STUCCO
white sand_964
Benjamin Moore

- (A) SIGNAGE TO BE REMOVED
- (B) REWIRE CONDUIT
- (C) EXISTING METAL ROLLUP GATE TO BE REMOVED
- (D) EXISTING METAL-CLAD WINDOW FRAME TO BE REMOVED
- (E) EXISTING NON-HISTORIC PANEL TO BE REMOVED
- (F) EXISTING DOOR TO BE REMOVED
- (G) REPLACE LIGHT FIXTURES
- (H) SIDEWALK HATCH TO BE REMOVED AND FILLED
- (I) LEADED GLASS TRANSOM WINDOW TO BE REPLACED

- (C) NEW WOOD FRAME STOREFRONT WINDOW
- (D) NEW WOOD PANEL
- (E) NEW LIGHT FIXTURE, SEE DETAIL, PAGE 10
- (F) NEW WOOD FRAME GLASS DOORS
- (G) SIDEWALK HATCH TO BE REMOVED AND FILLED
- (H) SAFETY LAMINATED 3" GLASS FOR ALL STOREFRONT WINDOW
- (I) NEW LEADED GLASS TRANSOM WINDOW
- (J) NEW SIGNAGE, SEE DETAIL C, PAGE 9



(A) EXISTING ELEVATION
SCALE 3/8" = 1'-0"



(B) PROPOSED ELEVATION
SCALE 3/8" = 1'-0"