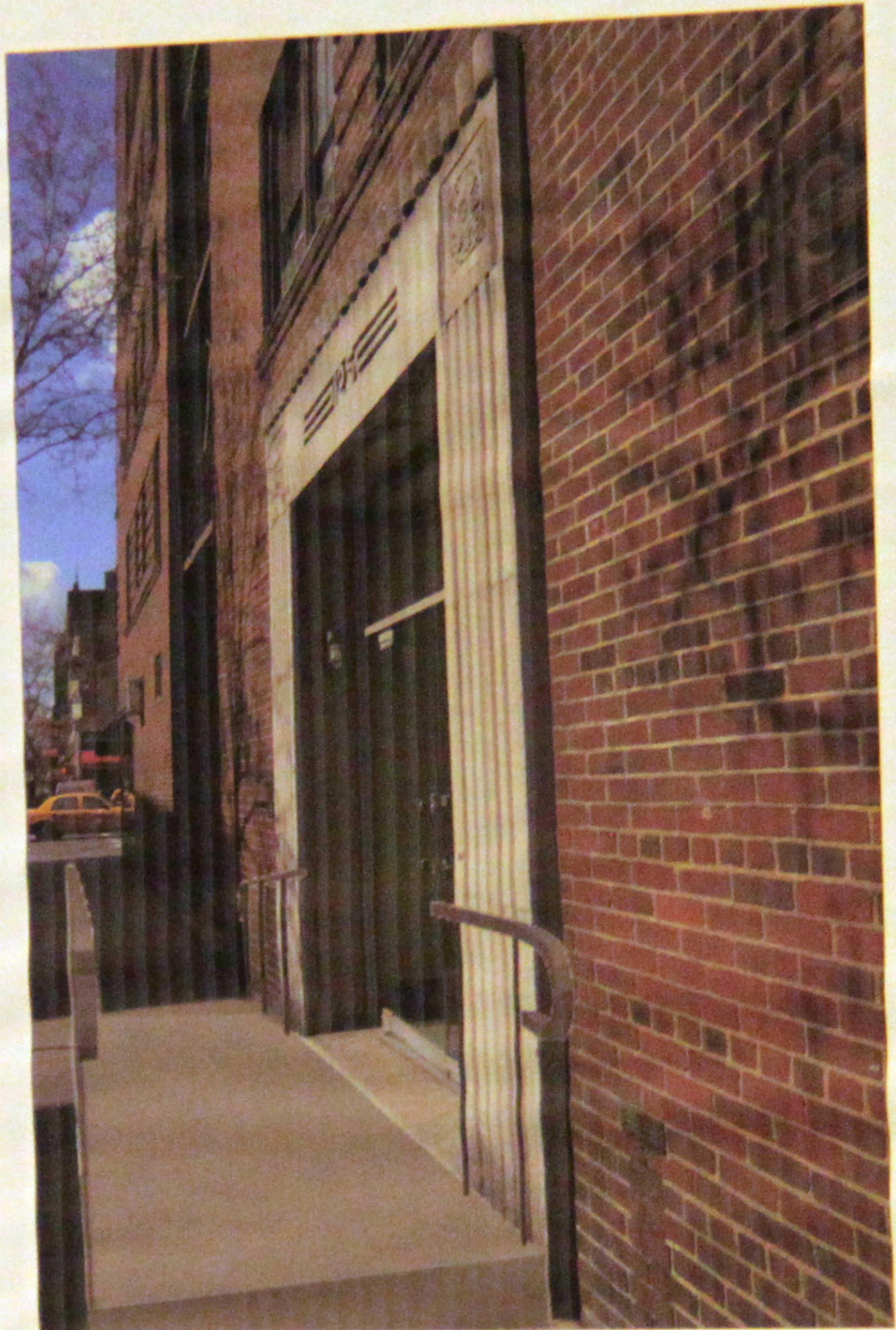


2 ENTRANCE PROPOSED RAMP @  
125 CHRISTOPHER STREET, NEW YORK, NY 10014  
N.T.S.



3 ENTRANCE PROPOSED RAMP @  
125 CHRISTOPHER STREET, NEW YORK, NY 10014  
N.T.S.

NO.	REVISION	BY	DATE

ARCHITECT'S SEAL

LUKE LICALZI, P.E., P.C.  
CONSULTING ENGINEERS

RON KOPELS STUDIO  
153 W 27th Street, Suite 1003  
New York, NY 10001

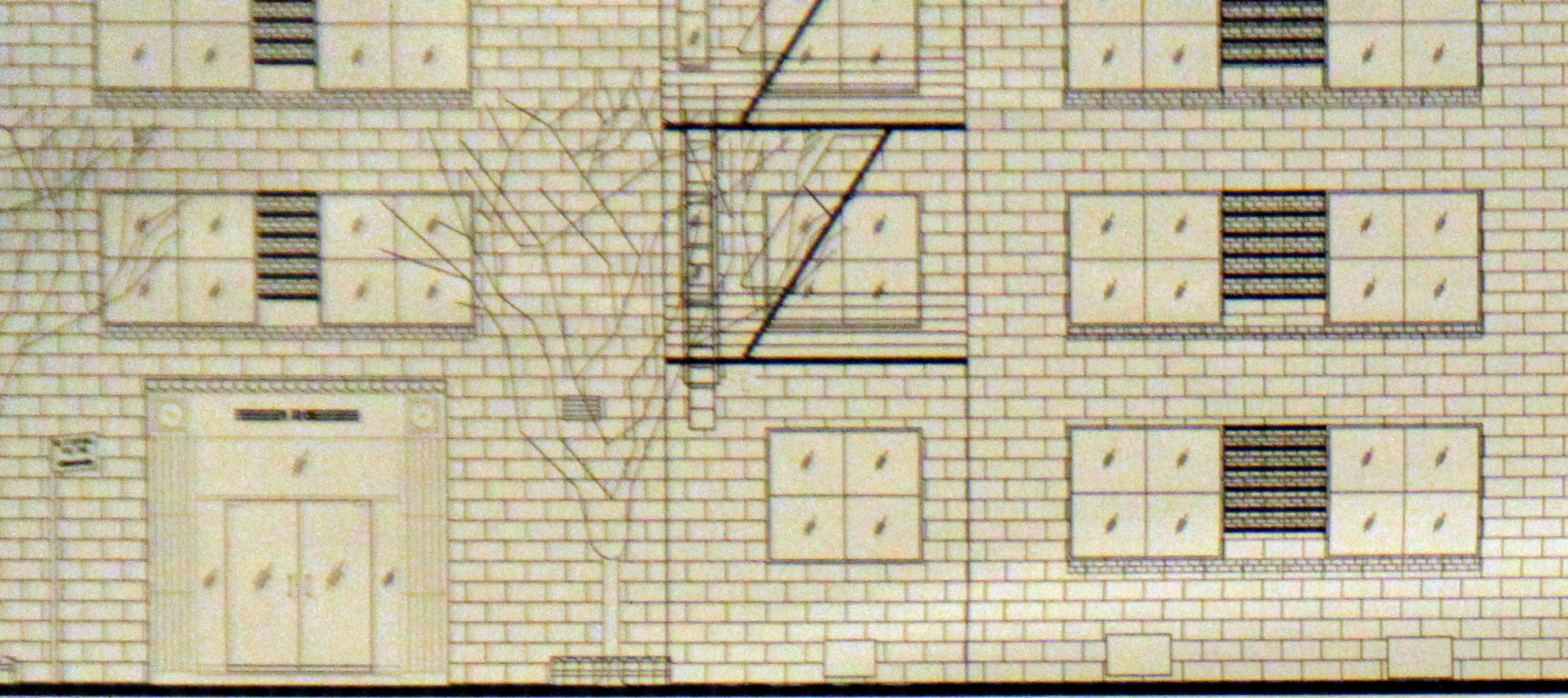
PROJECT TITLE:  
125 CHRISTOPHER STREET  
NEW YORK, NY 10014

SCALE: AS NOTED	DATE: MARCH 22, 2012
PROJECT NO.: 430	DRAWN BY: MM
CHECKED BY: RK	APPROVED BY:

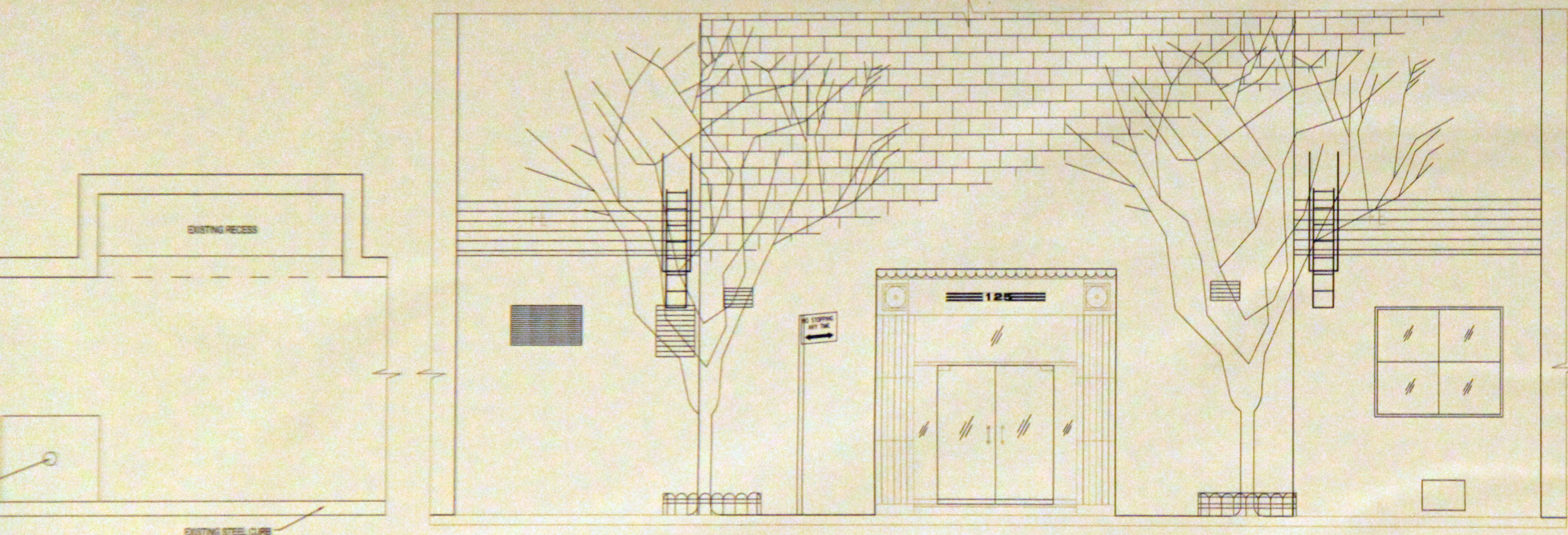
DWG. TITLE:  
ENTRANCE  
PROPOSED RAMP PICTURES

DWG. NO.:  
**A-003.00**





STOPHER STREET



OPHER STREET

CHRISTOPHER STREET

**3** EXISTING CONDITION ENTRANCE PARTIAL EXTERIOR ELEVATION  
SCALE: 1/4"=1'-0"

NO.	REVISION	BY	DATE

ARCHITECTS SEAL:

LUKE LICALZI, P.E., P.C.  
CONSULTING ENGINEERS

RON KOPELS STUDIO  
153 W 27th Street, Suite 1003  
New York, NY 10001

PROJECT TITLE:  
**125 CHRISTOPHER STREET  
NEW YORK, NY 10014**

SCALE: AS NOTED	DATE: MARCH 22, 2012
PROJECT NO.: 430	DRAWN BY: MM
CHECKED BY: RK	APPROVED BY:

DWG. TITLE:  
EXISTING CONDITION ENTRANCE  
ELEVATIONS AND EXISTING PLAN

DWG. NO.:  
**A-004.00**

SHEET NO.:  
4 of 6