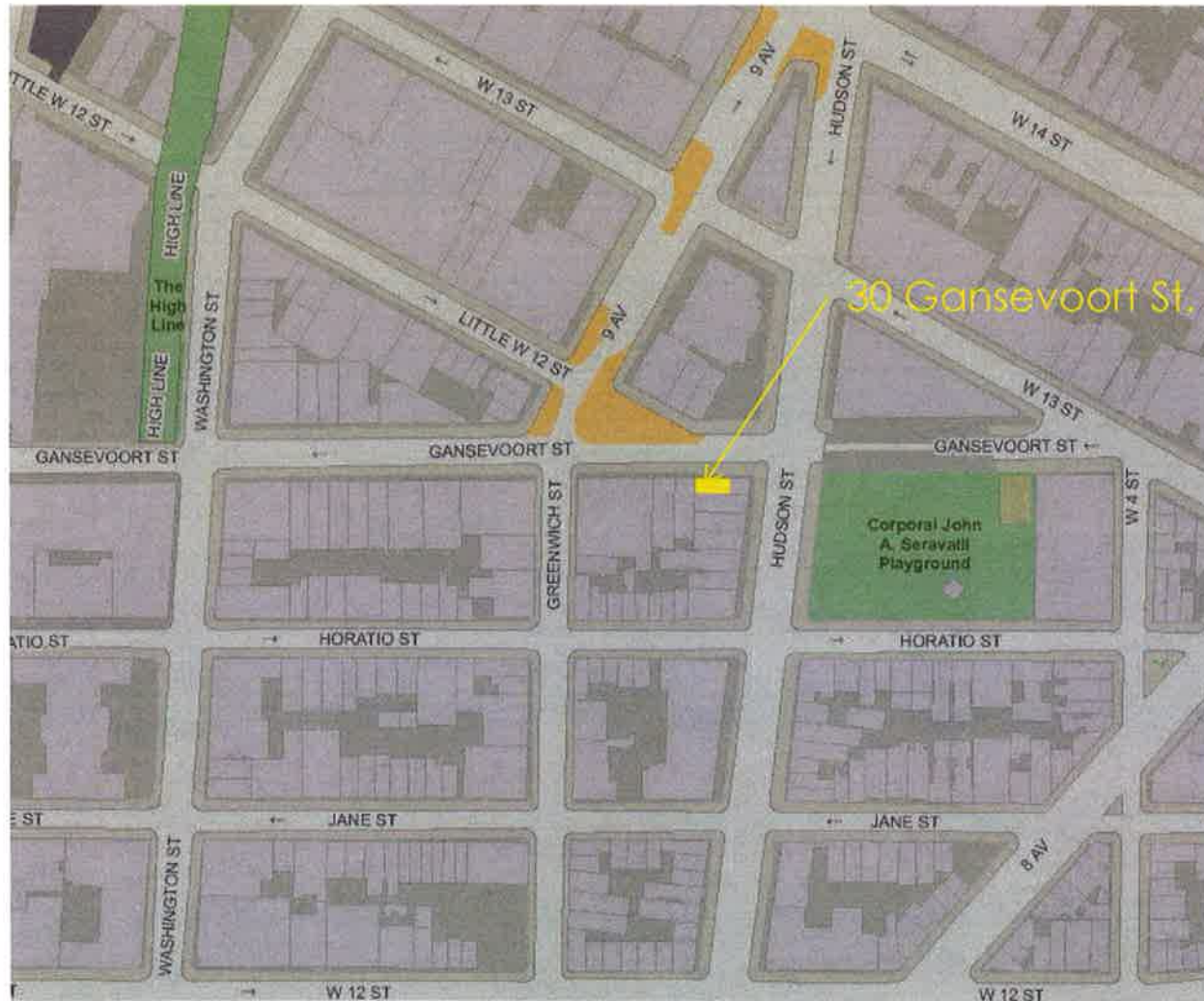


**Presentation for the Temporary Installation of Vinyl
Graphics on an existing storefront at 30 Gansevoort
Street**

September 24, 2013



Project Location



30 Gansevoort Street

Pre existing Conditions (Street view)



Installed date: **June 4, 2013**
Removal date: **January 31, 2014**

Elevation as of 2013.09.11



Street view as of 2013.09.11

EXISTING MASONRY
TEMPORARILY WRAPPED
WITH 3M SCOTCHCAL
VINYL FILM



EXISTING STOREFRONT ENTRY
DOOR TEMPORARILY WRAPPED
WITH 3M SCOTCHCAL VINYL FILM

EXISTING STOREFRONT
GLASS

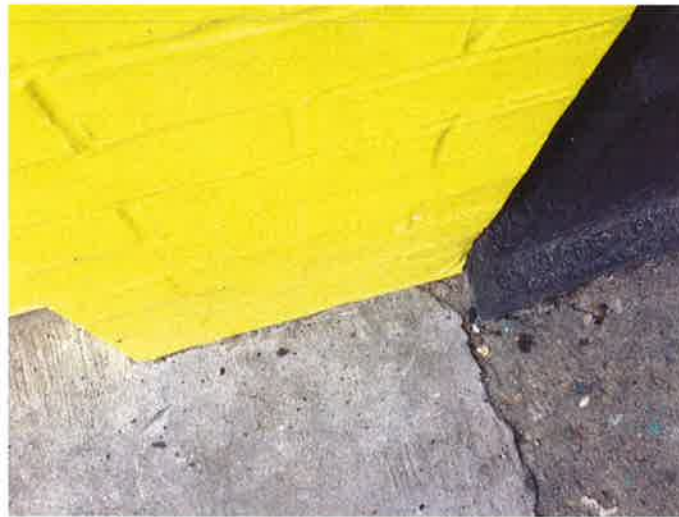
Installed Storefront Installation (June 4th, 2013)

LPC 14-7040

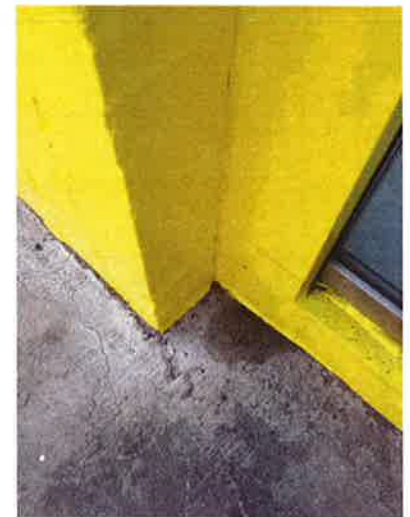
9/24/2013



Edge of film



Detail at brick



Detail at Window frame



Detail at top of window

** Please refer to sample board for actual material.*



Greenville, South Carolina



rue des Petits Carreaux, Paris, France



Rabinal, Guatemala



Las Vegas, Nevada

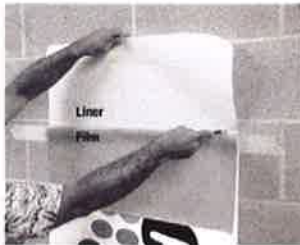
Other 3M installations

Application to TEXTURED Walls: Standard Tape Hinge Method

1. Create a tape hinge 10 to 12 inches from the top of the film.



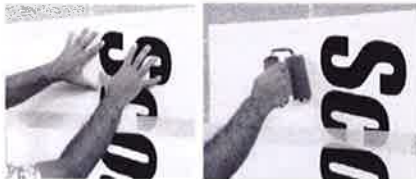
2. Roll the top of the film forward, carefully cut and remove that part of the liner.



3. Gently tack the top few inches of the film to the substrate. Use tapping motion with your fingers or lightly roll it, without heat, using the TSA-1 roller.

Pro's Tip

Quickly and lightly pass the TSA-1 tool and the heat gun over the edges of the film to set the edges, but do not conform the film; it is critical that air have an escape path during installation. This is especially recommended when using 8524 overlaminate.



Pro's Tip

Always work toward an open edge (as shown in these photos) through which the trapped air can escape. NEVER work from the edge to the center or from an open edge to a sealed edge, such as at a panel overlap.

Pro's Tip

The most common application error is moving too fast. Try moving at about 2 inches per second at first and adjust from there. A good application rate is about 50 square feet per hour.

4. Direct the heat gun toward the top corner of the graphic. Heat the film in a 1.5 to 2 inch wide band until warm, which usually takes only about 2 seconds and immediately begin rolling the film with the TSA-1 roller. Notice that the roller is positioned about 2 inches above the top edge of the graphic for the first pass.



5. With the roller closely following the heat gun, move continuously at about 2 inches per second and completely past the outer open edge of the graphic.



6. Move the roller down 1.5 inches so that the next pass overlaps the previous one by about 70%. Notice in the photo below how the film conformed to the texture during the first pass.

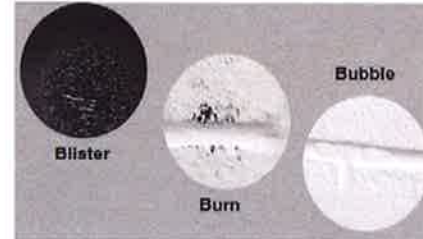


7. After you have applied a few inches of the graphic, take a moment to observe how well the film is conforming to the surface.

- a. In this example, notice how the film conforms well to the shallow, concave shape of the mortar joints of this wall.



- b. Blisters or burns: do the next pass a little faster.
- c. Bubbles: slow down a little and apply a little more pressure. Also see Step 11 for proper air release techniques when applying film to textured surfaces.



8. Remove the tape hinge and expose more film adhesive.

- a. Roll the film up, grasp a corner of the liner and gently pull it away from the film.



- b. While holding the film away from the substrate, evenly pull down about 12 inches of the liner.



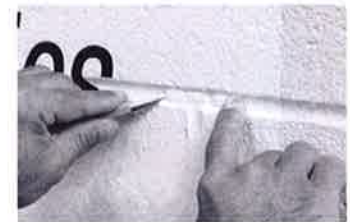
- c. Release the film and give it a few seconds to recover from the stretching that occurs when you remove the liner.



9. Lightly tack the film in the area where the liner was just removed, just as you did in Step 1. Continue working down the graphic as described in the previous steps.
10. Immediately after applying the film, inspect the mortar joints. If the lines are very deep and sharp, it will not be possible to conform the film to the channel. See mortar joints on page 7.

11. To remove air bubbles.

- Use an air release tool (never use a knife) to poke a hole near one end and close to the edge of the bubble.
- Use a finger to push out the air as much as possible.
- Repeat these steps until the air is pushed out.
- Rework the area with the heat gun and TSA-1 roller to conform the film to the texture.



Installation Details