

94 GREENWICH AVENUE  
BLOCK 617, LOT 28  
GREENWICH VILLAGE HISTORIC  
DISTRICT SHOWN IN BLACK

LOCATION MAP



CURRENT CONDITION



CURRENT CONDITION, FRONT VIEW



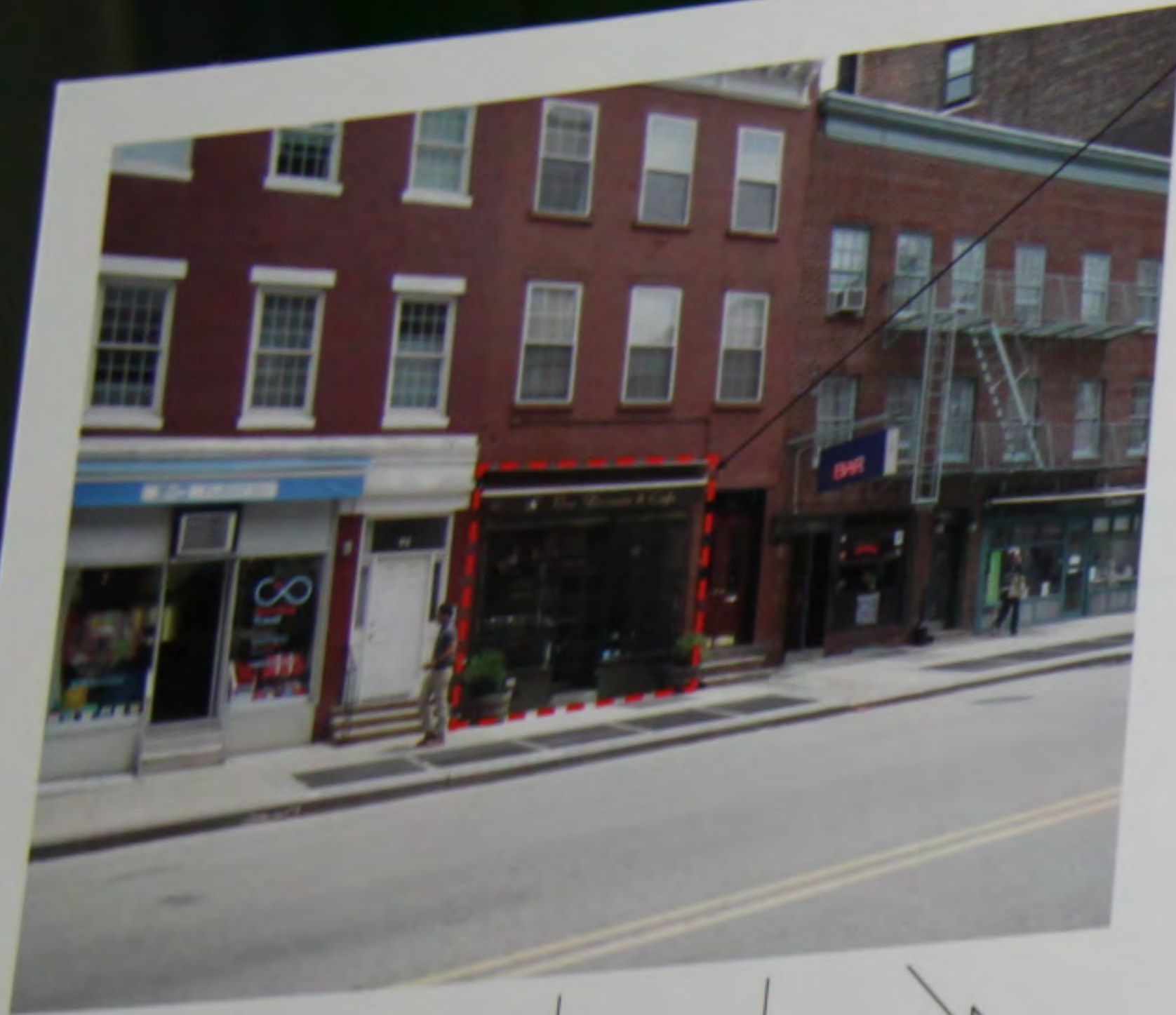
1940s TAX PHOTO



VIEW AT TIME OF HISTORIC DISTRICT DESIGNATION



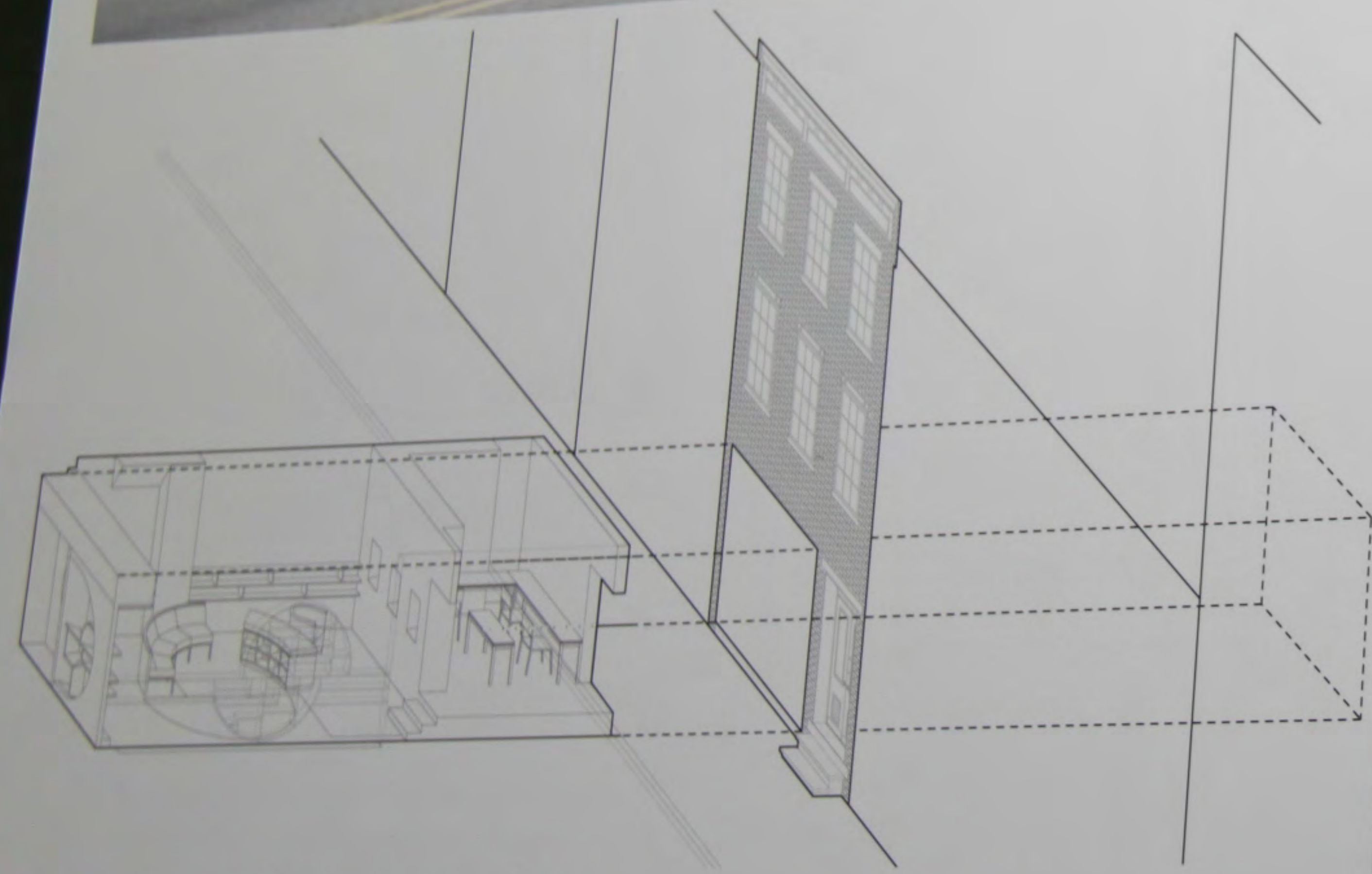
94 GREENWICH AT TIME OF DESIGNATION



- SCOPE OF WORK:
- REMOVE EXISTING STOREFRONT (NO ORIGINAL MATERIAL)
  - REMOVE AWNING
  - NEW STORE INTERIOR
  - NEW HVAC, REPLACING ROOF UNIT AT BACK ROOF W NEW UNIT
  - GARDEN WORK
  - KEEP HISTORICK BRICK AROUND STOREFRONT
  - INSTALL NEW STOREFRONT
  - INSTALL NEW AWNING
  - INSTALL NEW SECURITY GATE BEHIND STOREFRONT



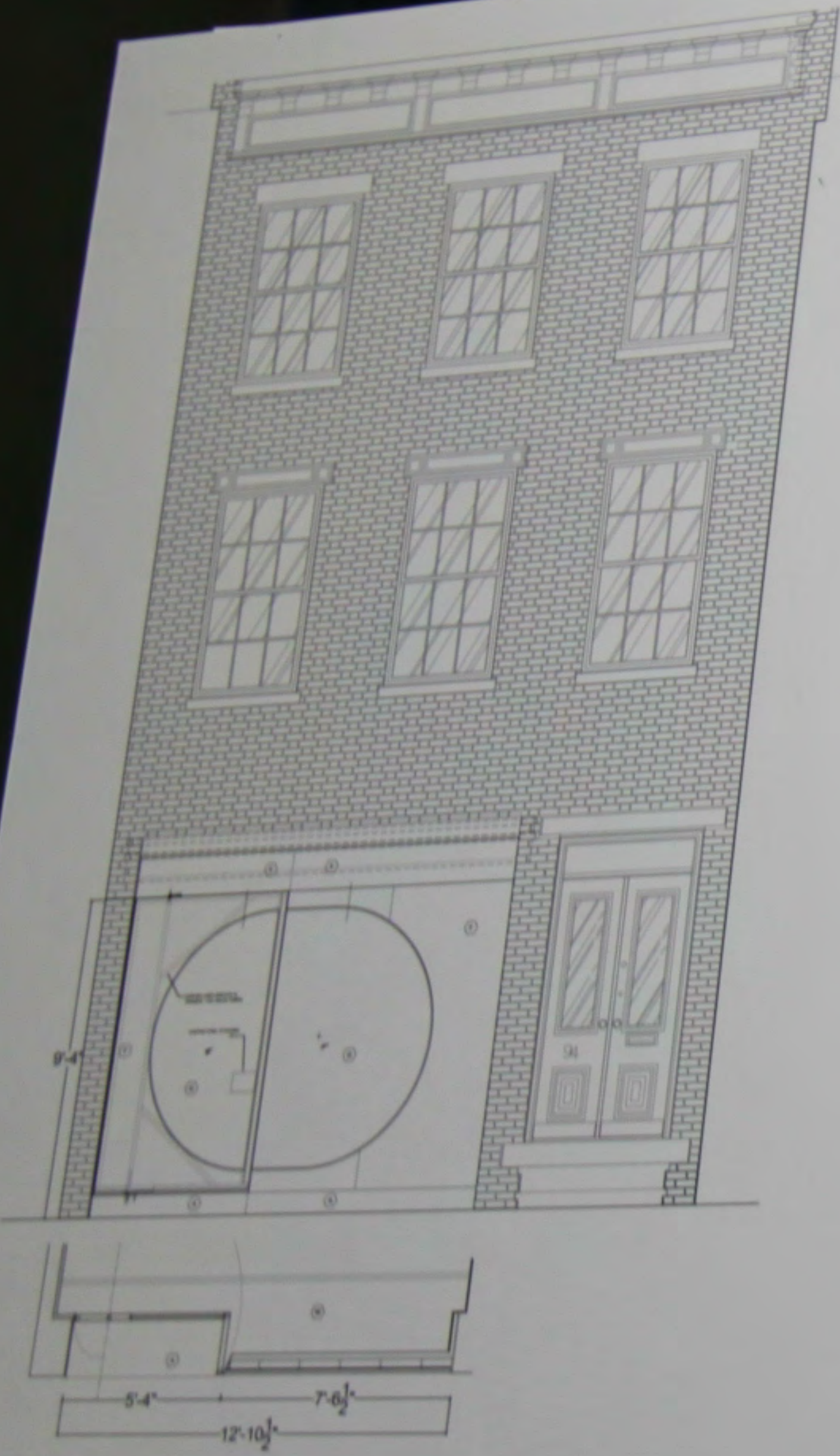
PROPOSED DESIGN



STORE AS INSERTION AND INTEGRAL UNIT OF INTERIOR AND EXTERIOR



PROPOSED DESIGN

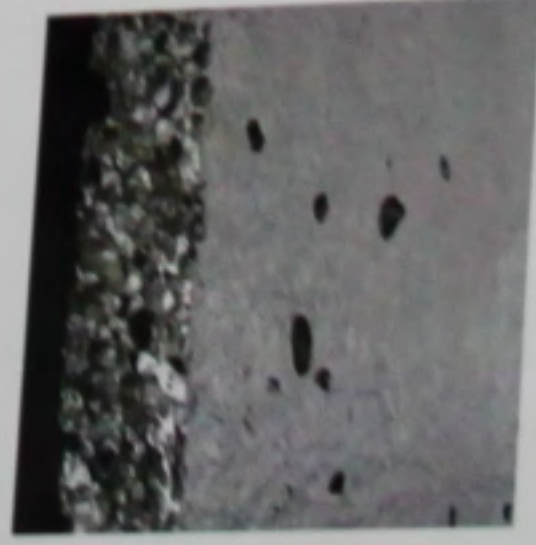


BUILDING ELEVATION WITH NEW STOREFRONT

- NEW RED FABRIC AWNING
- FOAMED ALUMINUM CLADDING
- LOW IRON GLAZING
- L-SHAPED CUSTOM DOOR
- WALNUT INTERIOR
- SANDED ALUMINUM PLATE CLADDING



CLOSE UP STOREFRONT



FOAMED ALUMINUM



ALUMINUM PLATE, SANDED AND ANODIZED FINISH



WALNUT



GLASS, LOW IRON

PROPOSED MATERIALS

- NEW RED FABRIC AWNING
- FOAMED ALUMINUM CLADDING
- LOW IRON GLAZING
- L-SHAPED CUSTOM DOOR
- WALNUT INTERIOR
- SANDED ALUMINUM PLATE CLADDING



EDITIONS DE PARFUMS  
FREDERIC MALLE

94

CLOSE UP STOREFRONT

IGN