

Context : Aerial View





Existing View looking south from 8th Ave



Existing View looking north from W 4th St



Existing View looking north from W 4th St



Existing View looking west from Jane St

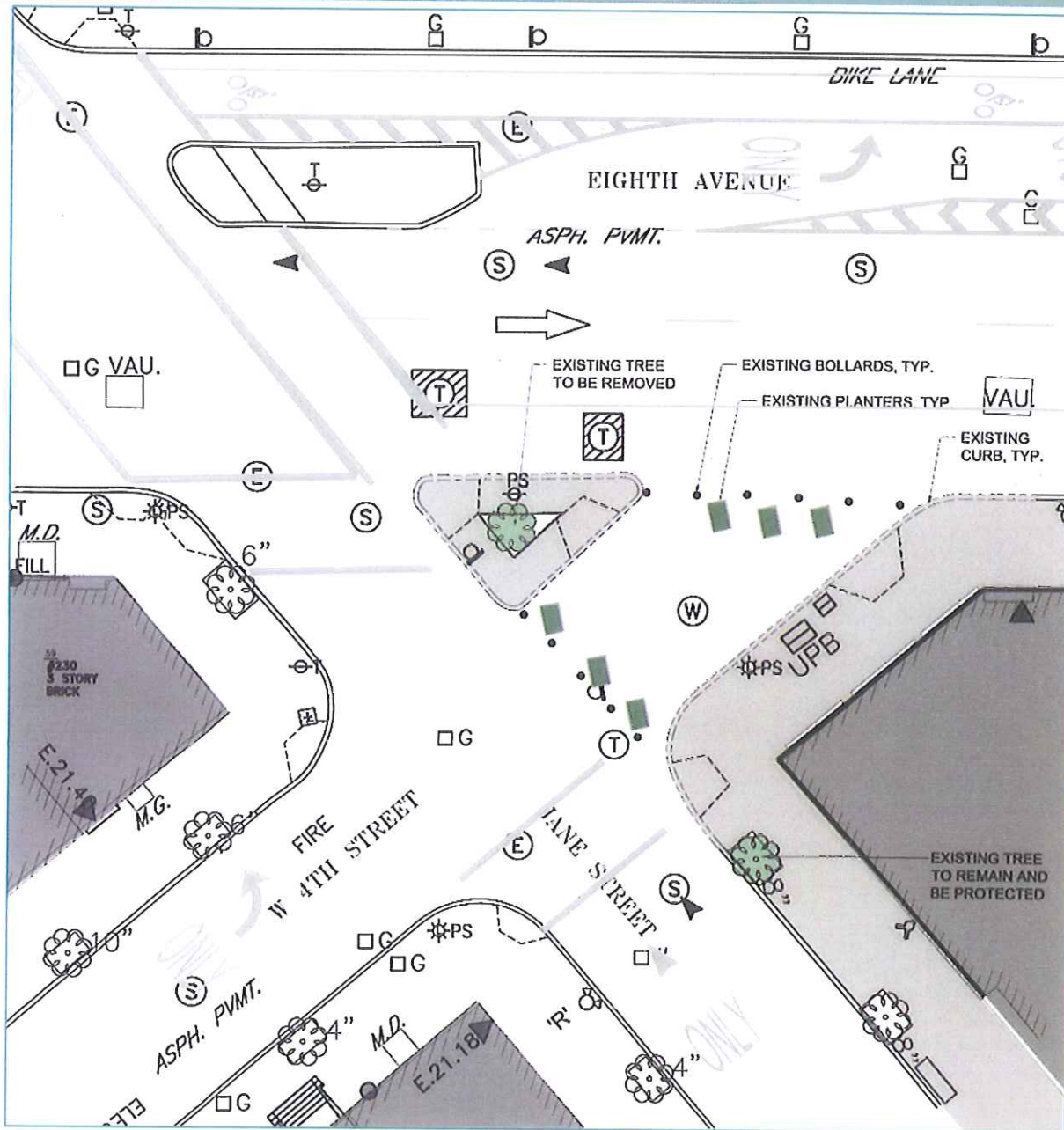


Existing View looking northeast from 8th Ave



Existing View looking east from 8th Ave

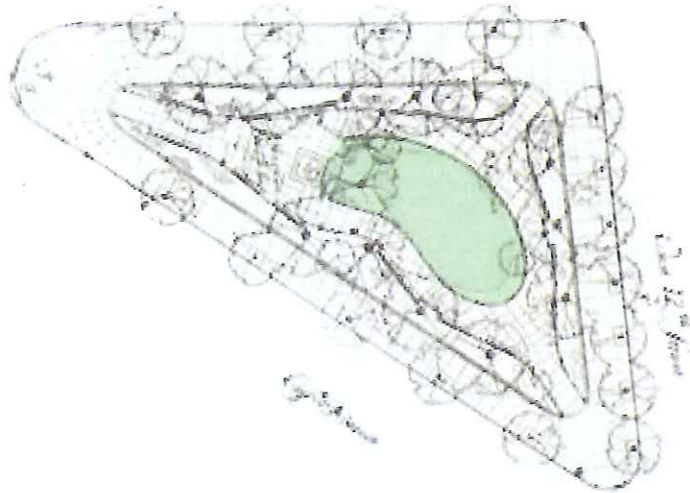
Existing Conditions Plan



- Lack of unified space
- Poor connections to adjacent sidewalks
- Vast amount of pavement
- Minimal space for pedestrians
- Lack of shade and seating

Precedent ::: Abington Square Park

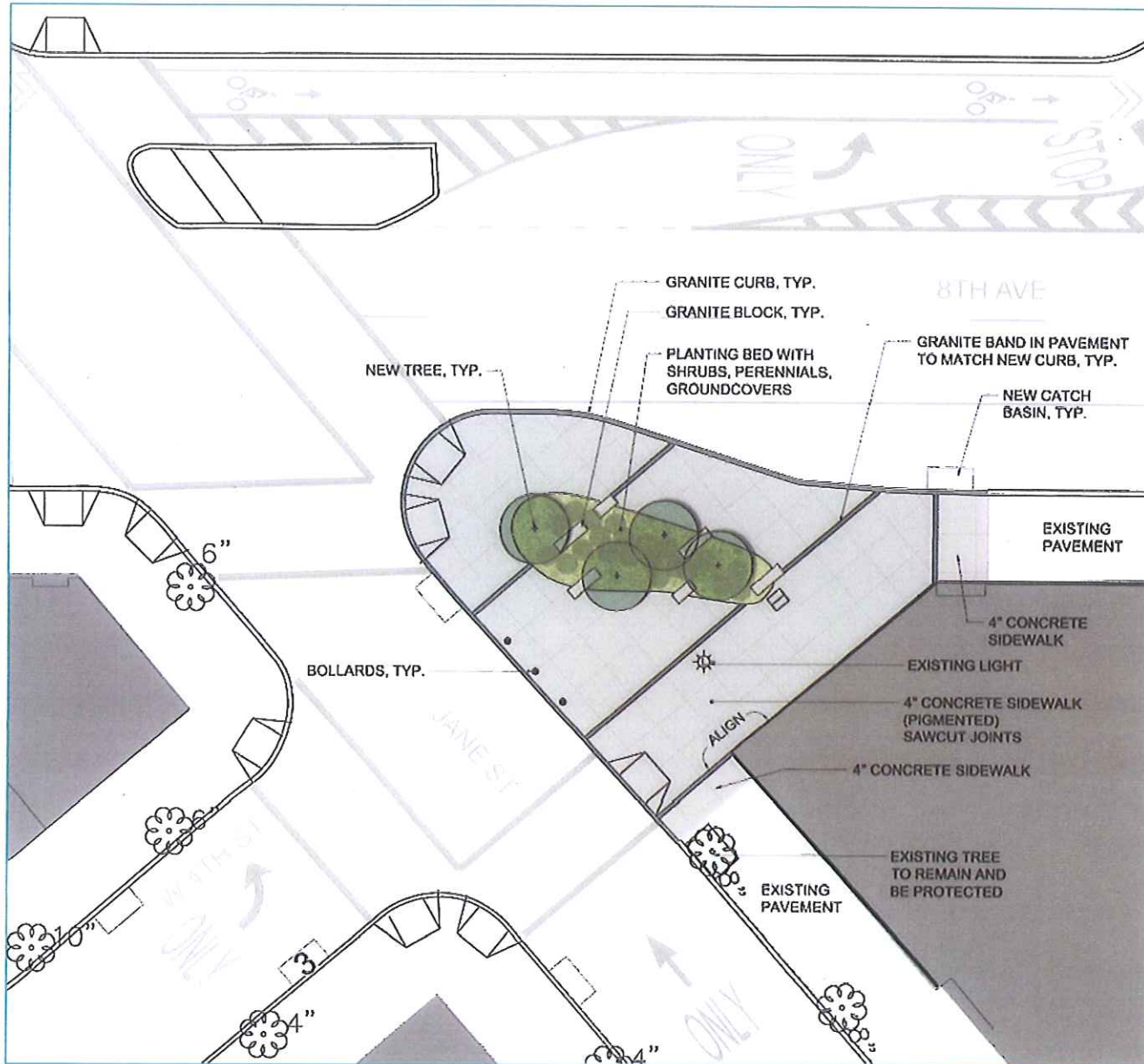
Looking at adjacent public spaces for inspiration.....



Organic shape of central lawn and planted area



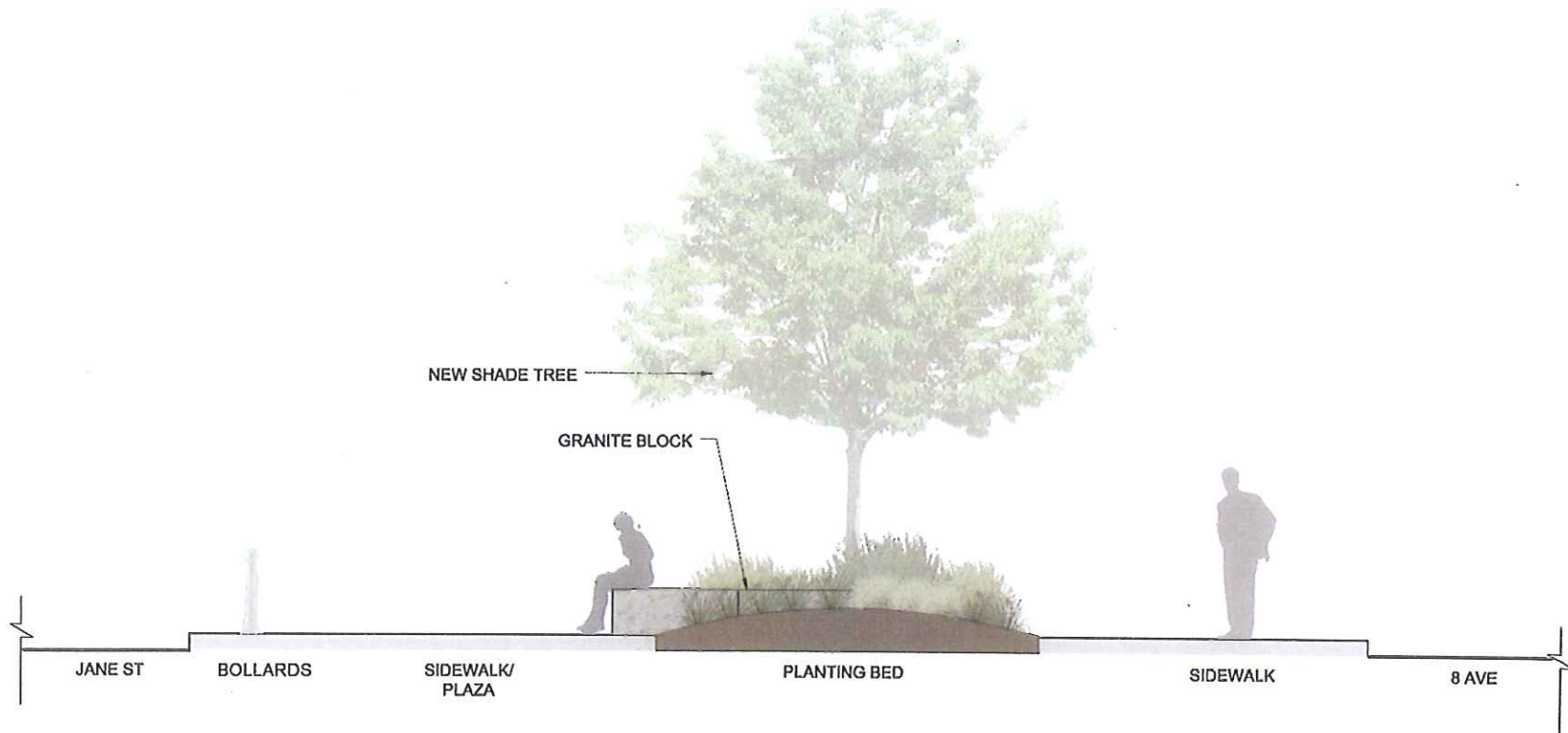
Proposed Site Plan



- Curb extension provides more space for pedestrians and improves safety
- Distinctive paving and planting bed defines space & references historic grid of W. 4th St.
- Plantings provide shade, maintains views, captures stormwater, filters noise & cleans air
- Granite blocks blend with the landscape, provide seating & evokes an organic feel within the plaza
- Bollards act as visual cue for motorists approaching from W. 4th St
- NOTE: Parks will maintain plantings under Greenstreet Program.



Maintaining views, creating space and providing seating.....



Integrating historic & existing materials.....



Detail view of granite block with plantings



Precedent : Battery Bosque

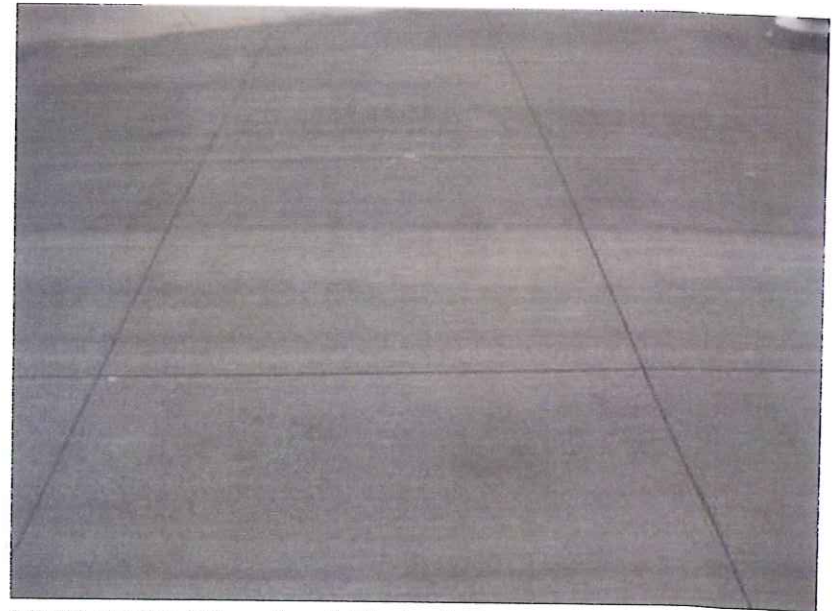


Existing bollards to be reused

Using distinctive paving to reference to the historic street grid



Granite Band in pavement to match new curb



NYC DOT Standard Tinted Concrete (5'x5')

Using native trees to define space, clean air and provide shade while maintaining views.....



Quercus bicolor (Swamp White Oak)



Nyssa sylvatica (Sour Gum)

Using low-maintenance, native plants.....



Russian Sage and Purple Coneflower



Blue Princess Holly



Fountain Grass



Liriope



Daffodils