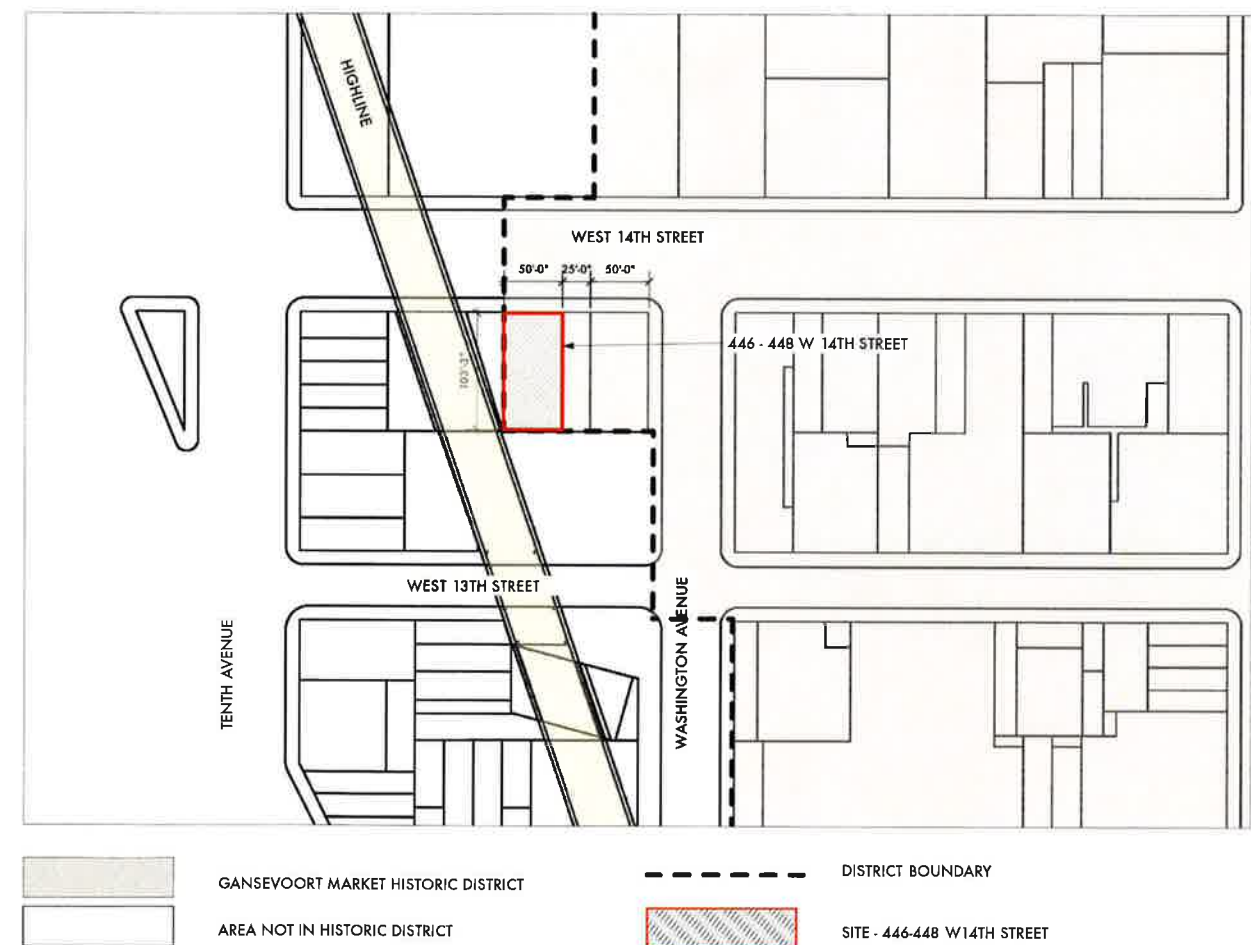


446 - 448 W. 14TH STREET

PROPOSED COOLING TOWER LOCATION

LANDMARKS PRESERVATION COMMISSION PUBLIC HEARING 08.01.11





A VIEW FROM WASHINGTON ST. / W13TH ST.



B VIEW FROM WEST 14TH STREET



C VIEW FROM WASHINGTON STREET



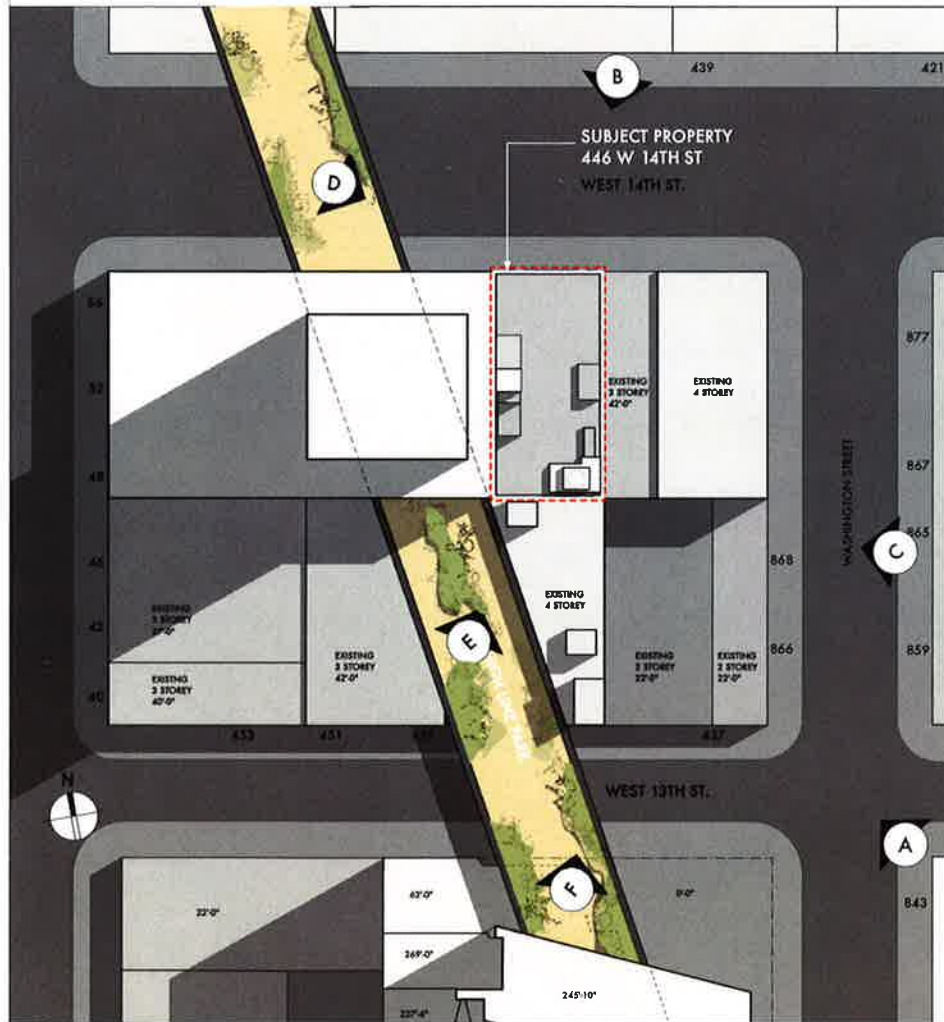
D VIEW FROM NORTH PART OF HIGHLINE



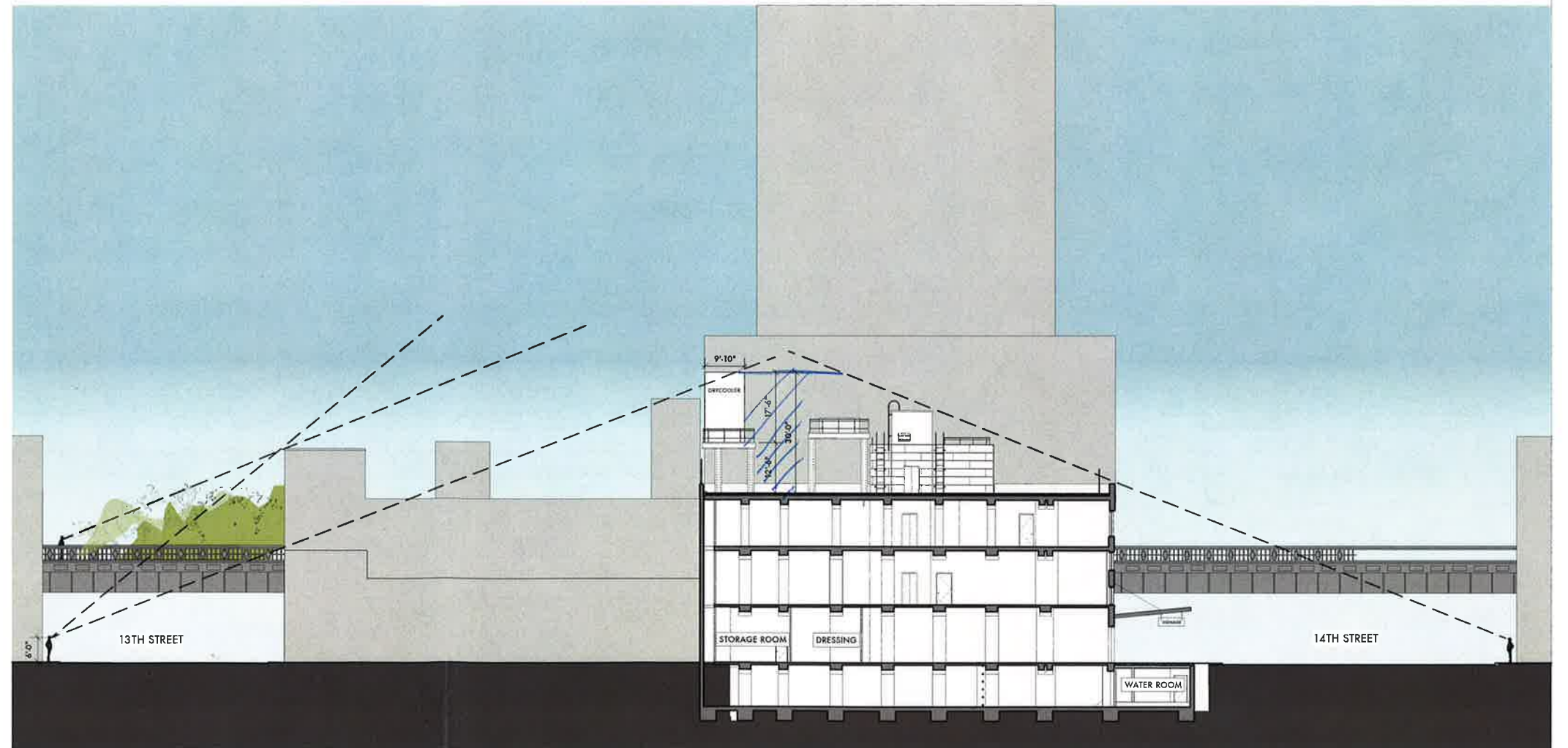
E VIEW FROM SOUTH PART OF HIGHLINE



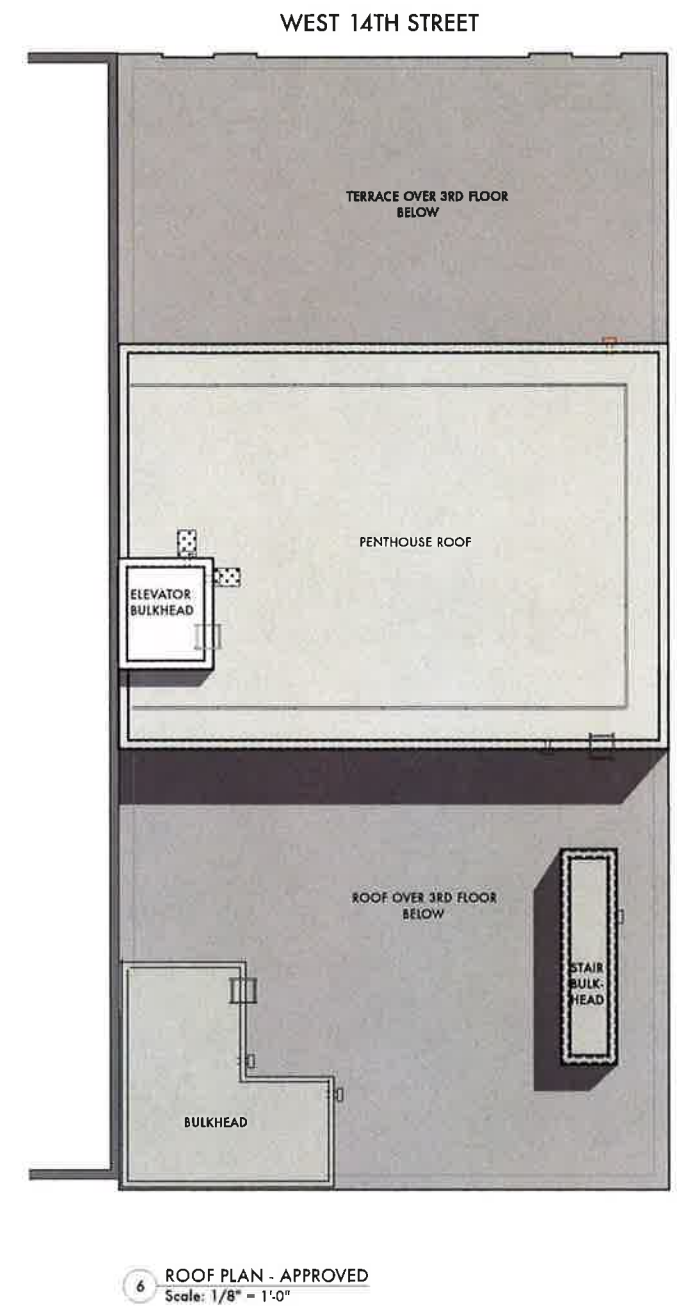
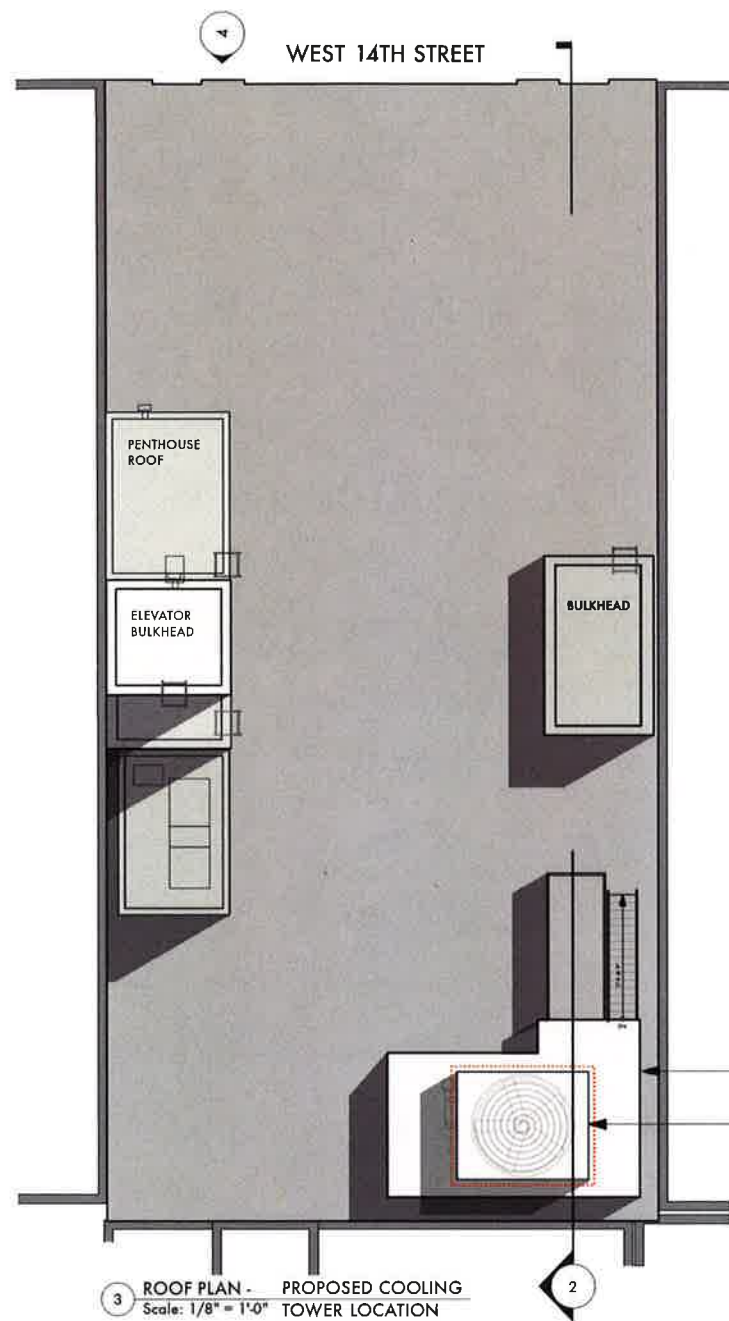
F VIEW FROM SOUTH PART OF HIGHLINE

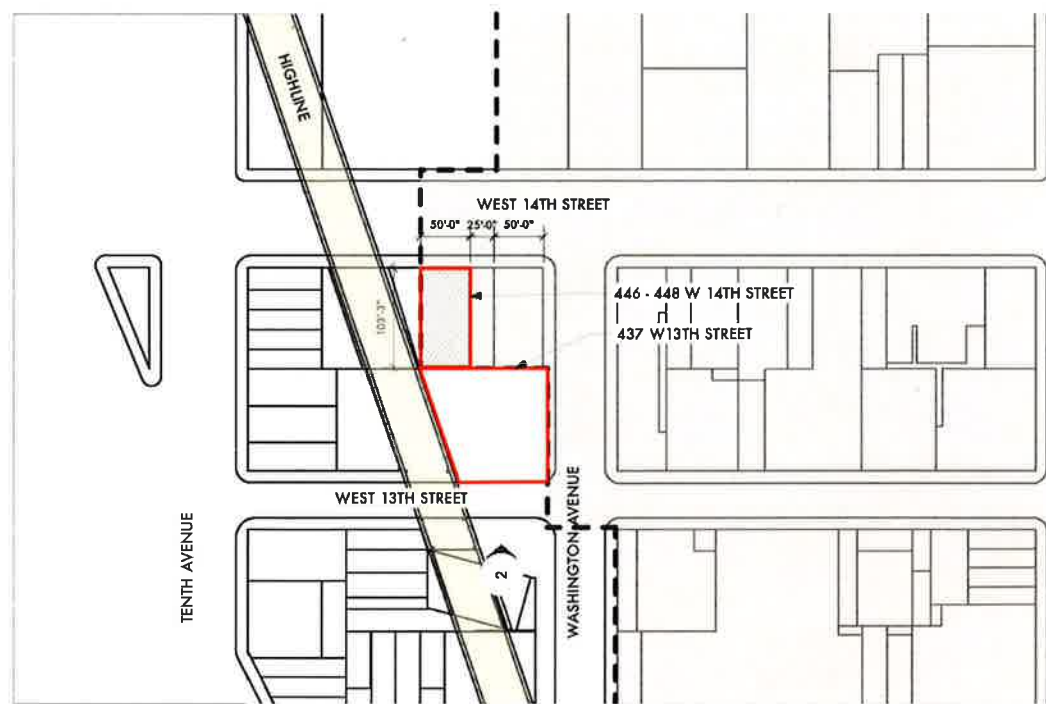


1 PLOT PLAN
Scale: 1" = 40 ft

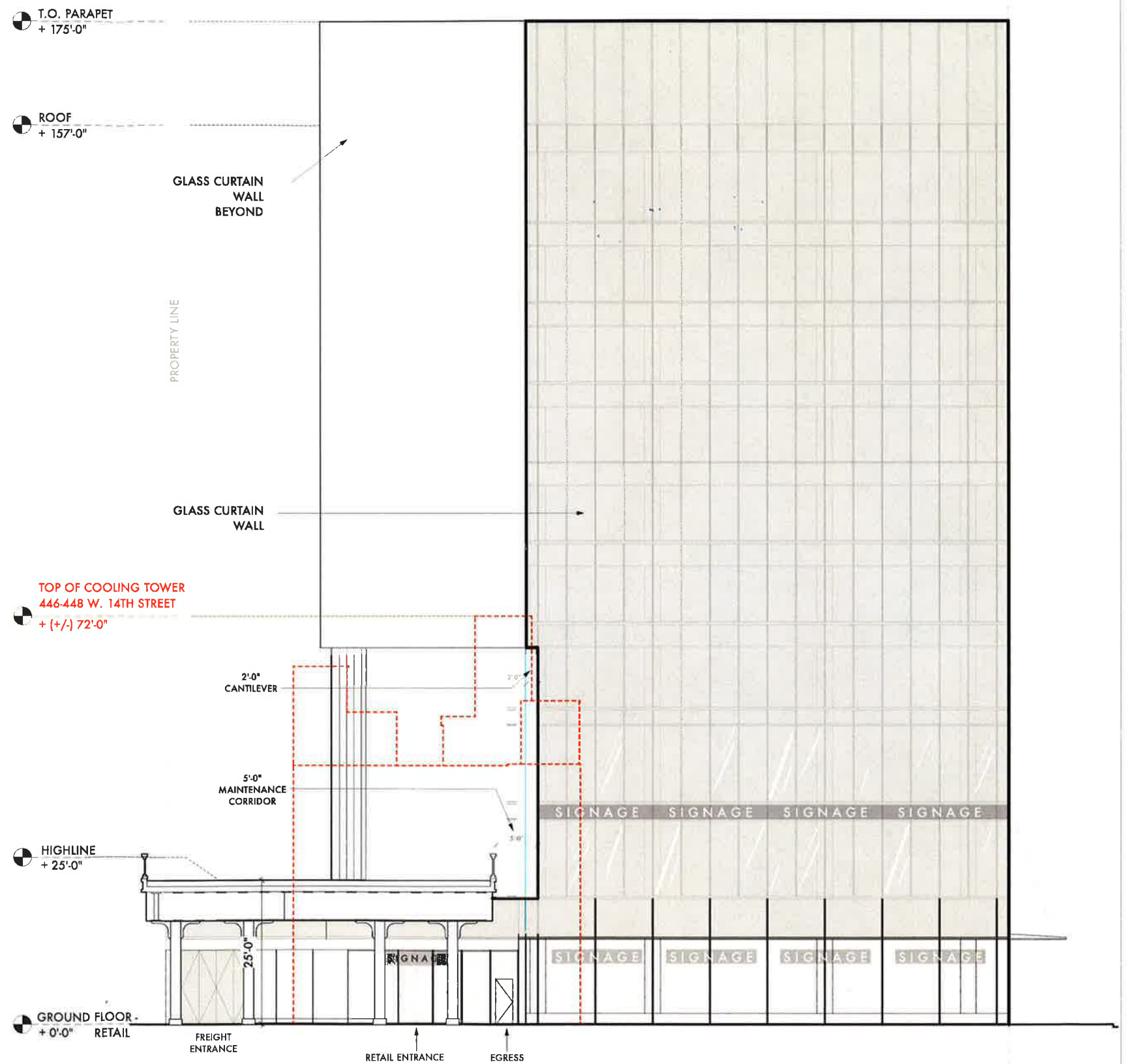


2 SECTION A - PROPOSED COOLING TOWER LOCATION
Scale: 1/16" = 1'-0"





1 SITE PLAN - PROPOSED BUILDING 437 W 13TH STREET



2 SOUTH ELEVATION - PROPOSED BUILDING 437 W 13TH STREET