



DESIGNATION PHOTO : 1969



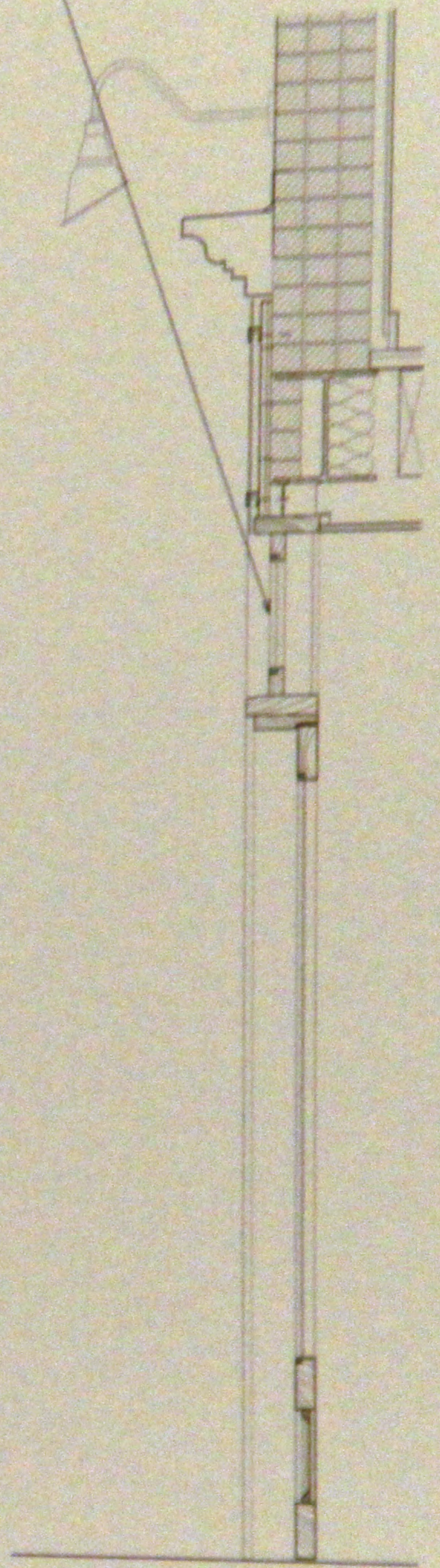
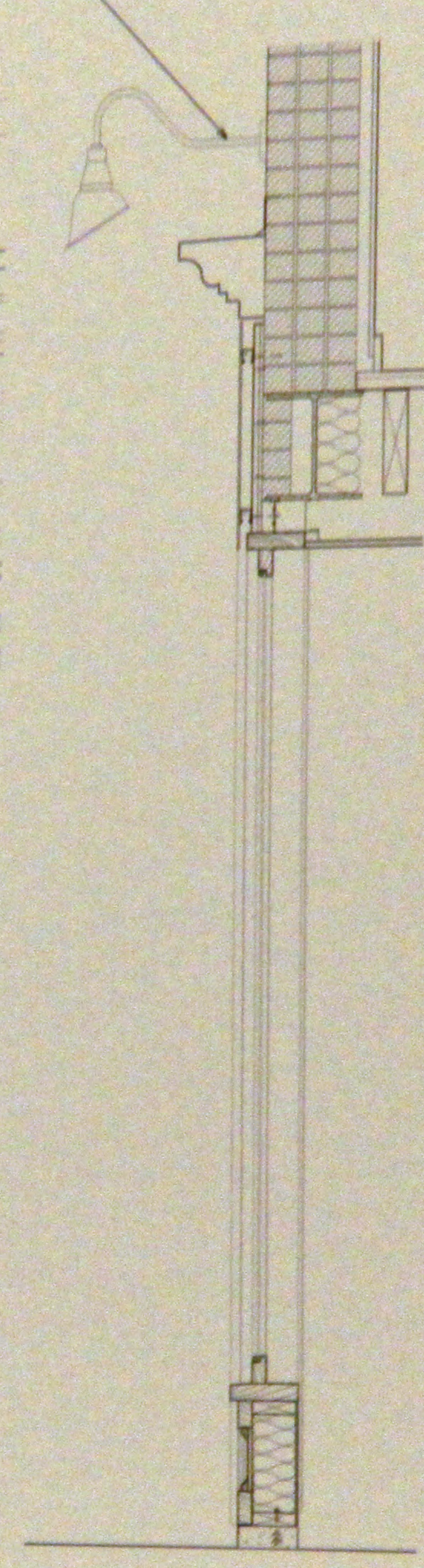
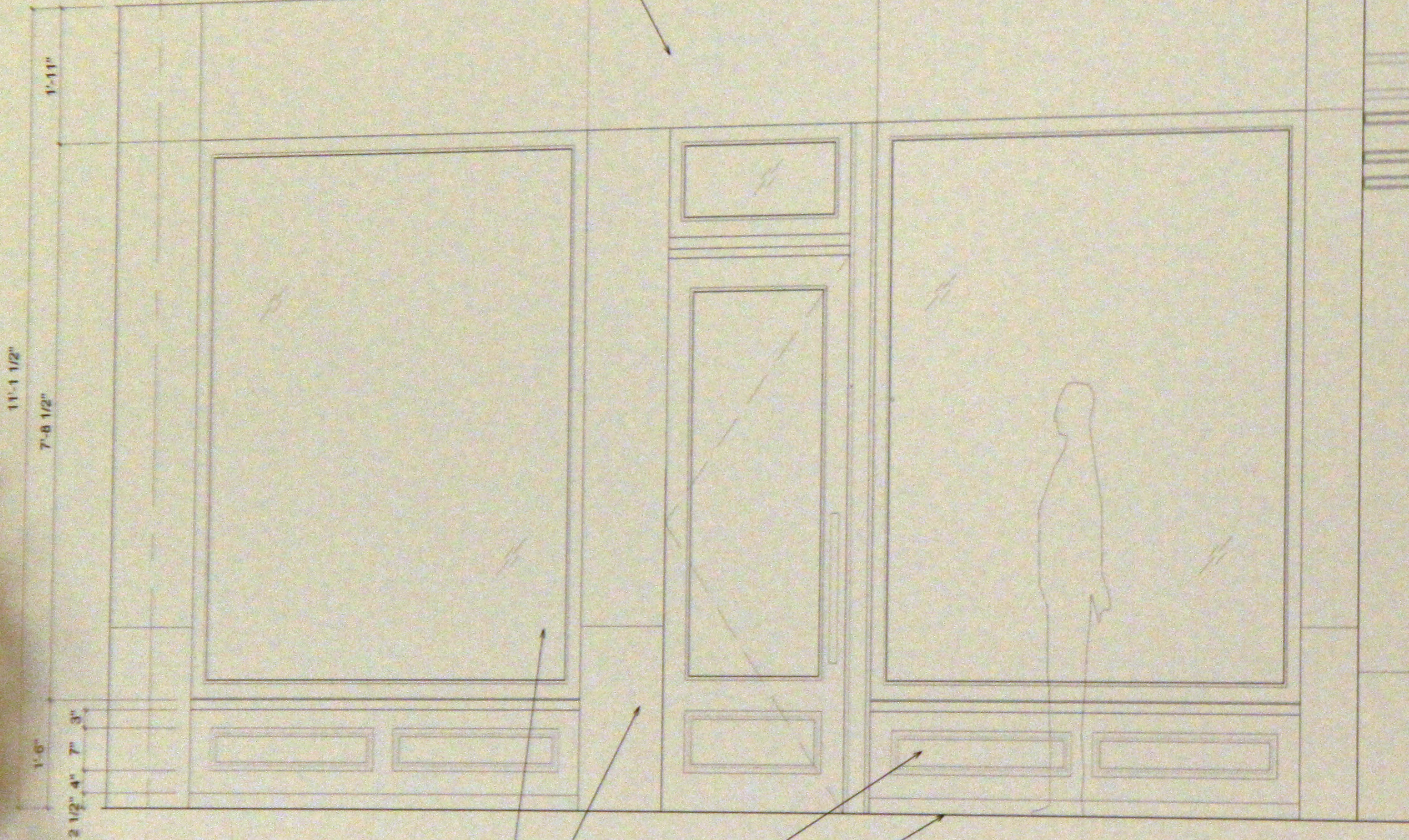
TAX LOT PHOTO 1938-1942

EXISTING PAINTED METAL CORNICE

PAINTED METAL PANEL
(SIGNAGE FILED
SEPARATELY BY TENANTS)

PAINTED METAL SHADED LIGHT FIXTURE
ANCHORED TO BRICK MASONRY

1/4 INCH THICK MONOLITHIC
LOW IRON GLASS TRANSOM



ELEVATION

SECTION @ STORE WINDOW

SECTION @ DOOR

1/4" THICK MONOLITHIC LOW IRON GLASS

PAINTED HARDWOOD PILASTERS (TYPICAL)

PAINTED HARDWOOD RECESSED PANEL
BULKHEAD AND STOREFRONT FRAMING

EXISTING SIDEWALK

