

PROPOSAL FOR NEW EXTERIOR AWNINGS & WINDOW BOXES

137 WEST 11TH STREET

PRESENTATION TO:
COMMUNITY BOARD 2

17 OCTOBER, 2019



fxcollaborative

AWNINGS & WINDOW BOXES
137 W. 11TH STREET
NEW YORK, NY

COMMUNITY BOARD 6 PRESENTATION

COVER SHEET

DATE: OCTOBER 17, 2019

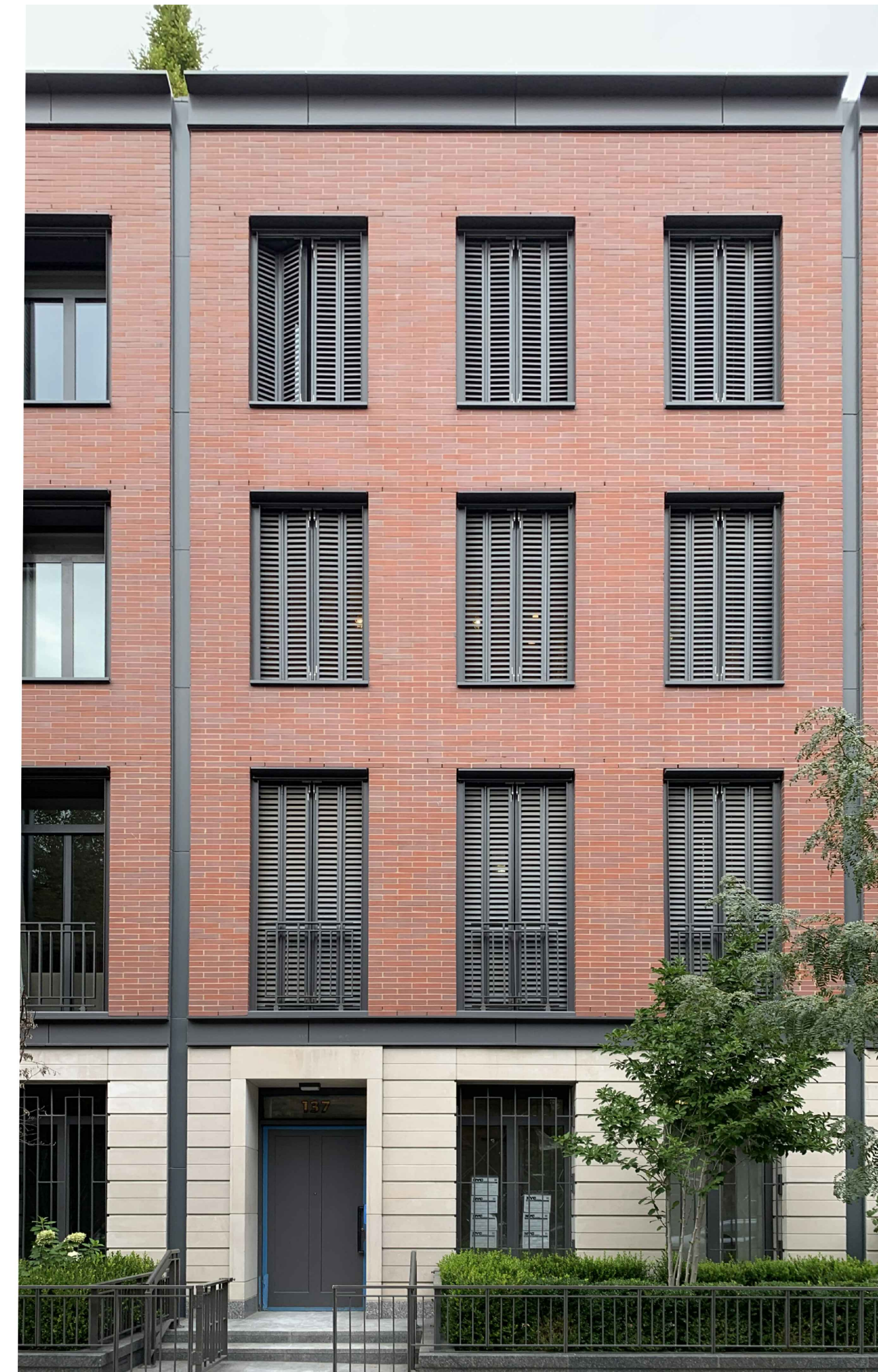
1 OF 5



FAIRFAX & SAMMONS
ARCHITECTS PC
2 SHIFFEN COURT NEW YORK CITY 10018
TELEPHONE (212) 258-0704 - FACSIMILE (212) 258-8817 - FAIRFAXANDSAMMONS.COM



A VIEW FROM SOUTHWEST



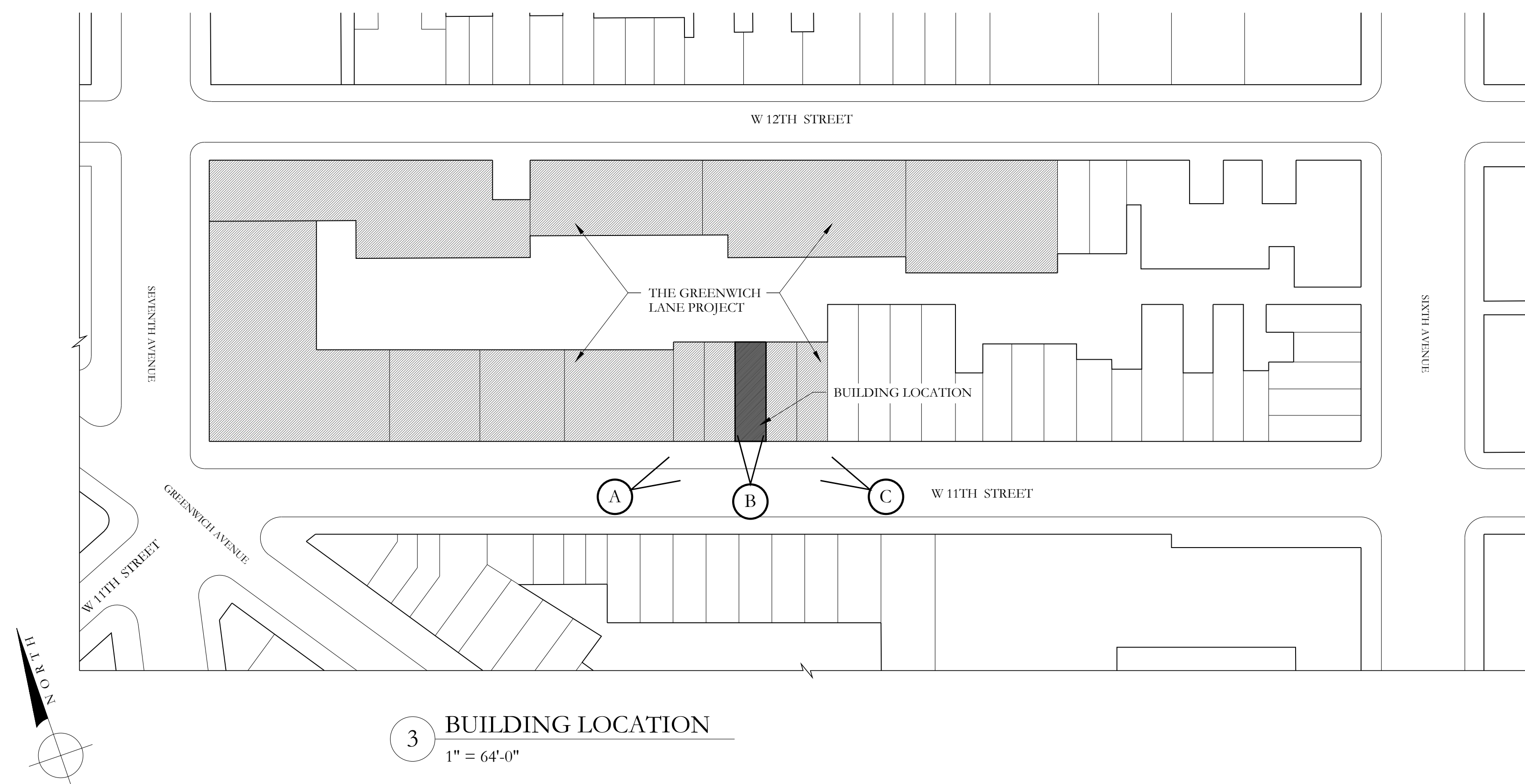
B VIEW FROM SOUTH



C VIEW FROM SOUTHEAST



2 SITE PLAN
1/16"=1'-0"



3 BUILDING LOCATION
1" = 64'-0"

AWNINGS & WINDOW BOXES
137 W. 11TH STREET
NEW YORK, NY

COMMUNITY BOARD 6 PRESENTATION
SITE INFORMATION & PHOTOS

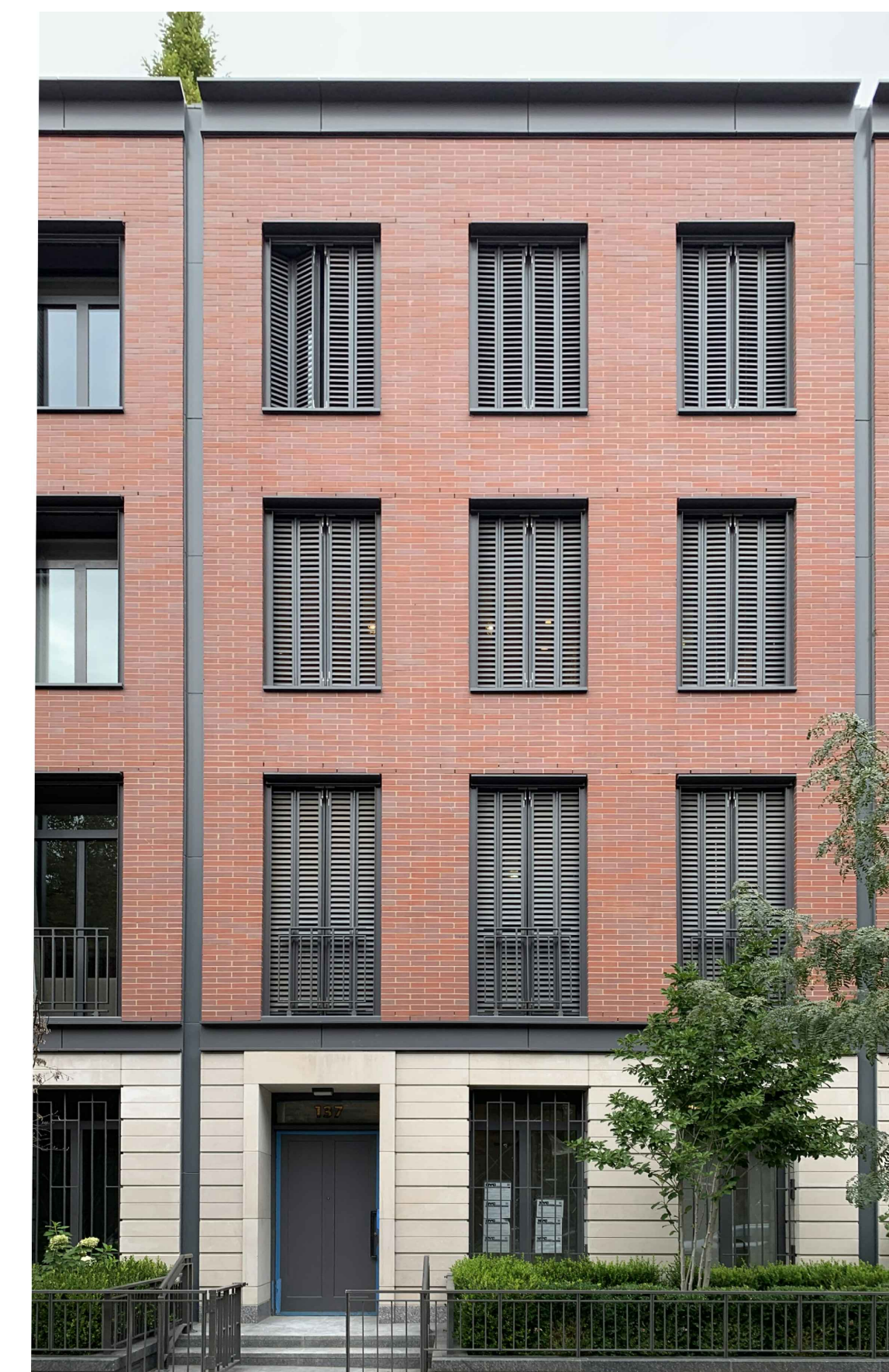
DATE: OCTOBER 17, 2019 2 OF 5



1 VIEW FROM SOUTHWEST: EXISTING



2 RENDERING FROM SOUTHWEST: PROPOSED



3 VIEW FROM SOUTH: EXISTING

PREVIOUSLY APPROVED TERRACE AWNING: FABRIC CHANGING TO MATCH WINDOW AWNINGS; SUBJECT TO APPROVAL AT STAFF LEVEL

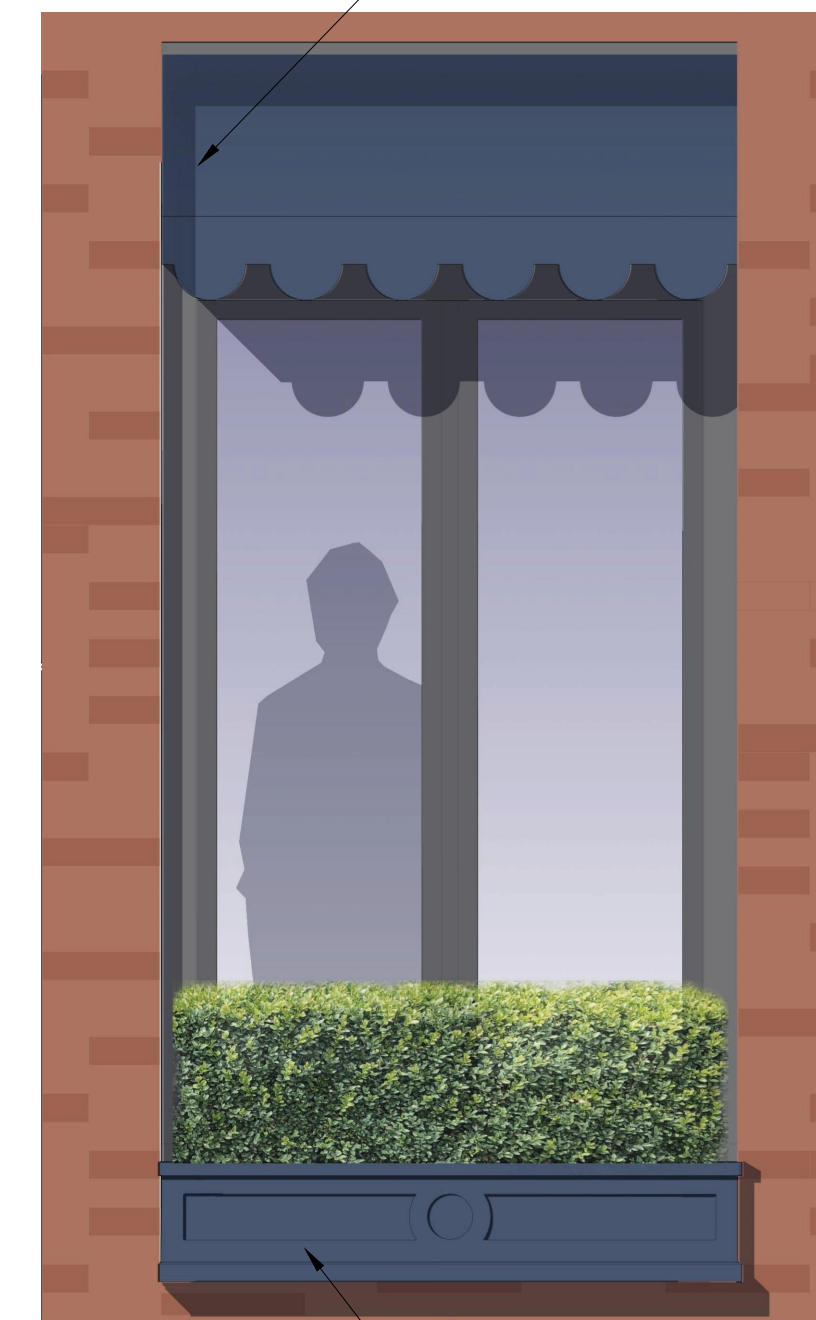
NEW WINDOW AWNINGS & BOXES, SUBJECT TO APPROVAL BY BOARD VOTE

NEW PAINT, LIGHT, HARDWARE AT FRONT DOOR; SUBJECT TO APPROVAL AT STAFF LEVEL



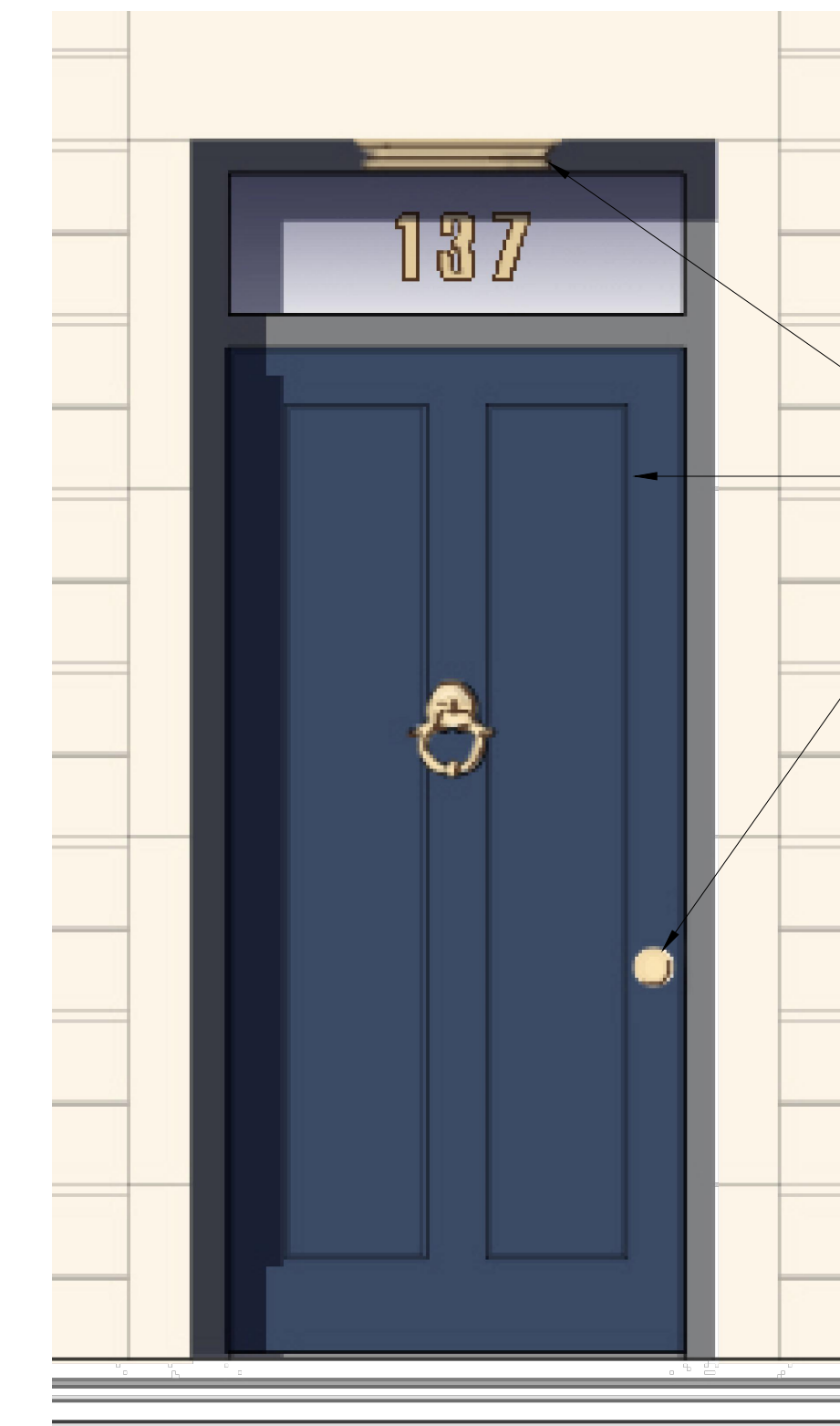
4 RENDERING FROM SOUTH: PROPOSED

NEW WINDOW AWNINGS AT FLOORS 1-4; SUBJECT TO APPROVAL BY BOARD VOTE



NEW WINDOW BOXES AT FLOORS 2-4; SUBJECT TO APPROVAL BY BOARD VOTE

5 UPPER WINDOW RENDERING: PROPOSED



NEW PAINT, LIGHT, HARDWARE AT FRONT DOOR; SUBJECT TO APPROVAL AT STAFF LEVEL

6 FRONT DOOR

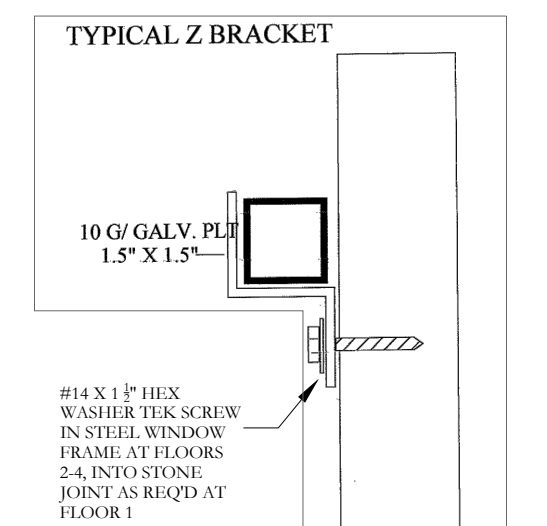
AWNINGS & WINDOW BOXES
137 W. 11TH STREET
NEW YORK, NY

COMMUNITY BOARD 6 PRESENTATION
SOUTH FACADE: EXTG. & PROPOSED

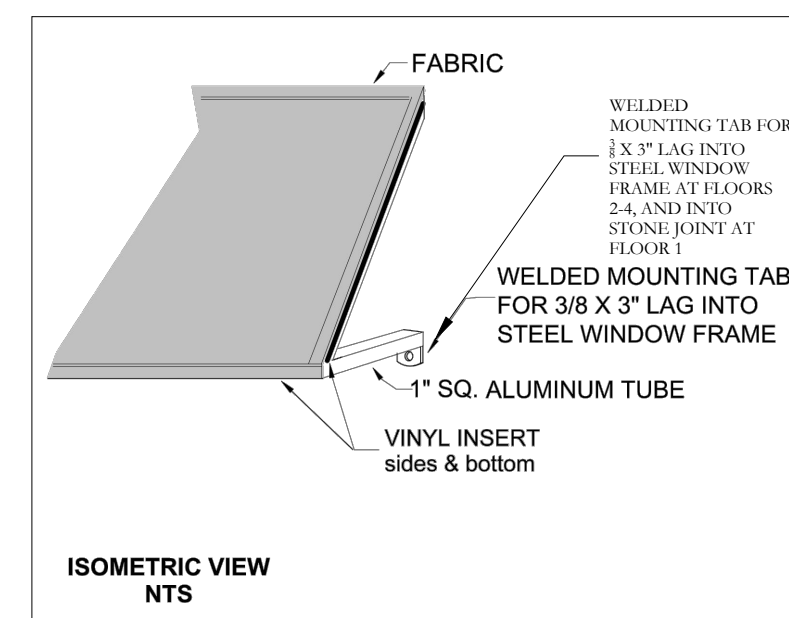
DATE: OCTOBER 17, 2019 3 OF 5



1 PROPOSED WINDOWS AT FLOORS 2-4
1-1/2" = 1'-0"
SHOWS PROPOSED AWNING AND WINDOW BOXES



TYPICAL ATTACHMENT DETAIL AT TOP OF AWNINGS, OR SIMILAR

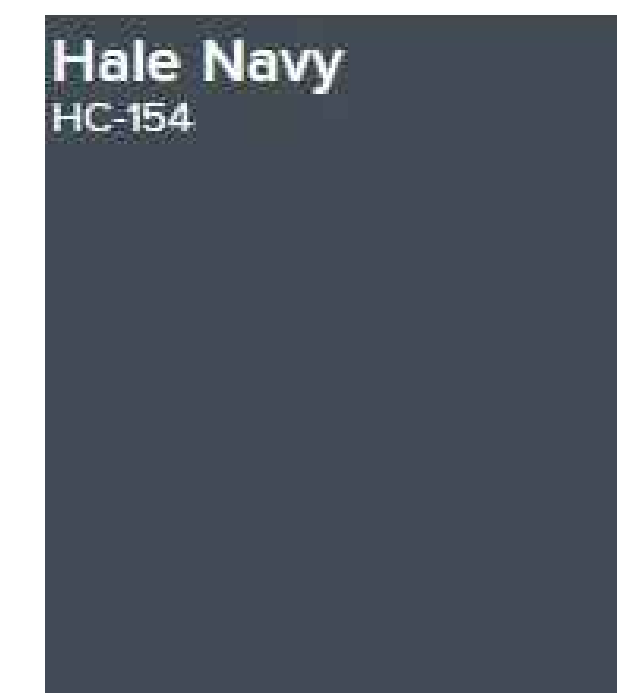


TYPICAL ATTACHMENT DETAIL AT SIDES OF AWNINGS, OR SIMILAR

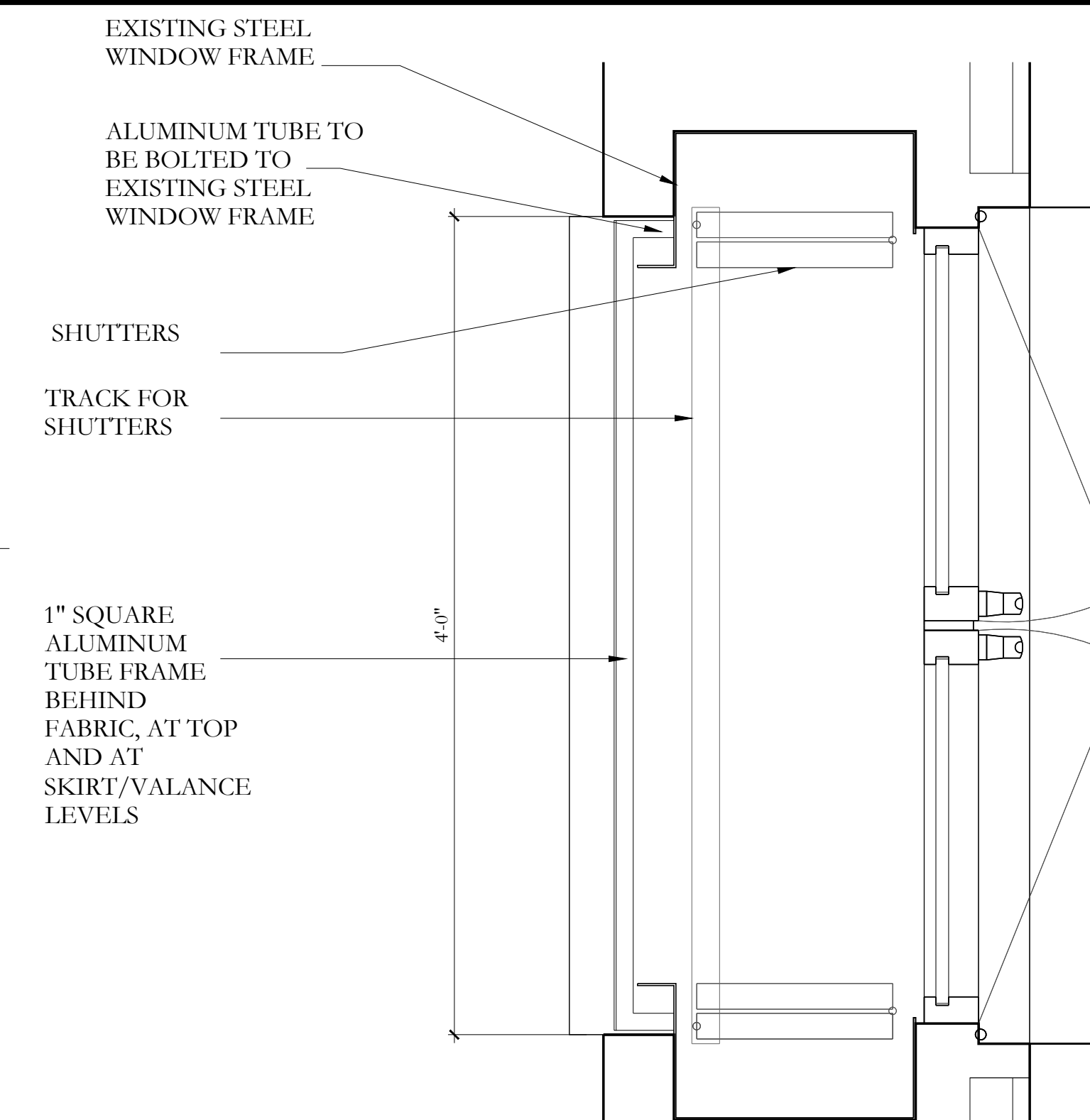
2 AWNING ATTACHMENT DTLS
ATTACHMENT METHOD SIMILAR FOR AWNINGS AT ALL FLOORS; FLOOR 1 TO BE BOLTED INTO MASONRY JOINT, FLOORS 2-4 TO BE BOLTED INTO STEEL WINDOW FRAME.



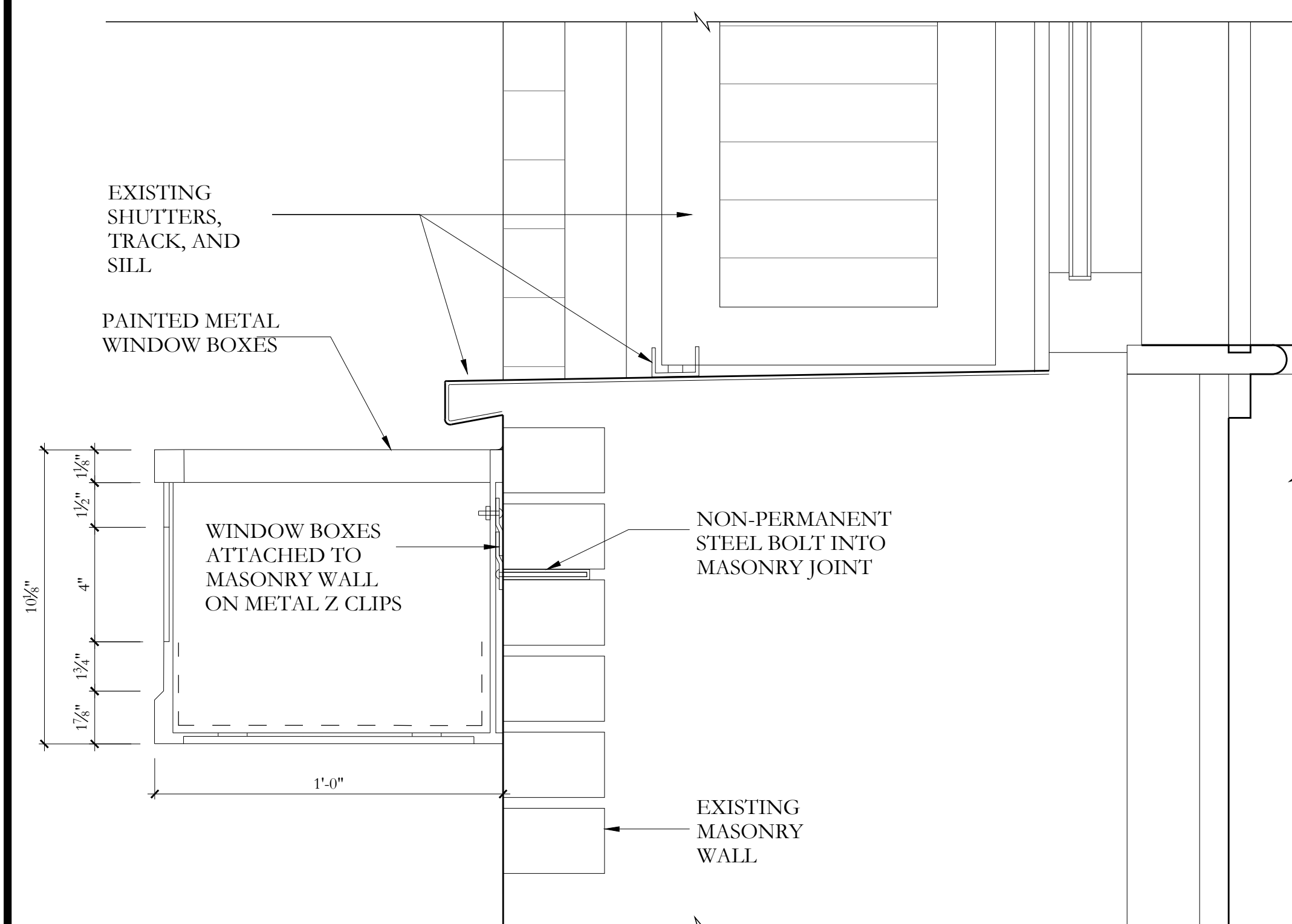
3 MARKILUX SUNVAS #30915
COLOR FOR FABRIC ON AWNINGS AT ALL FLOORS



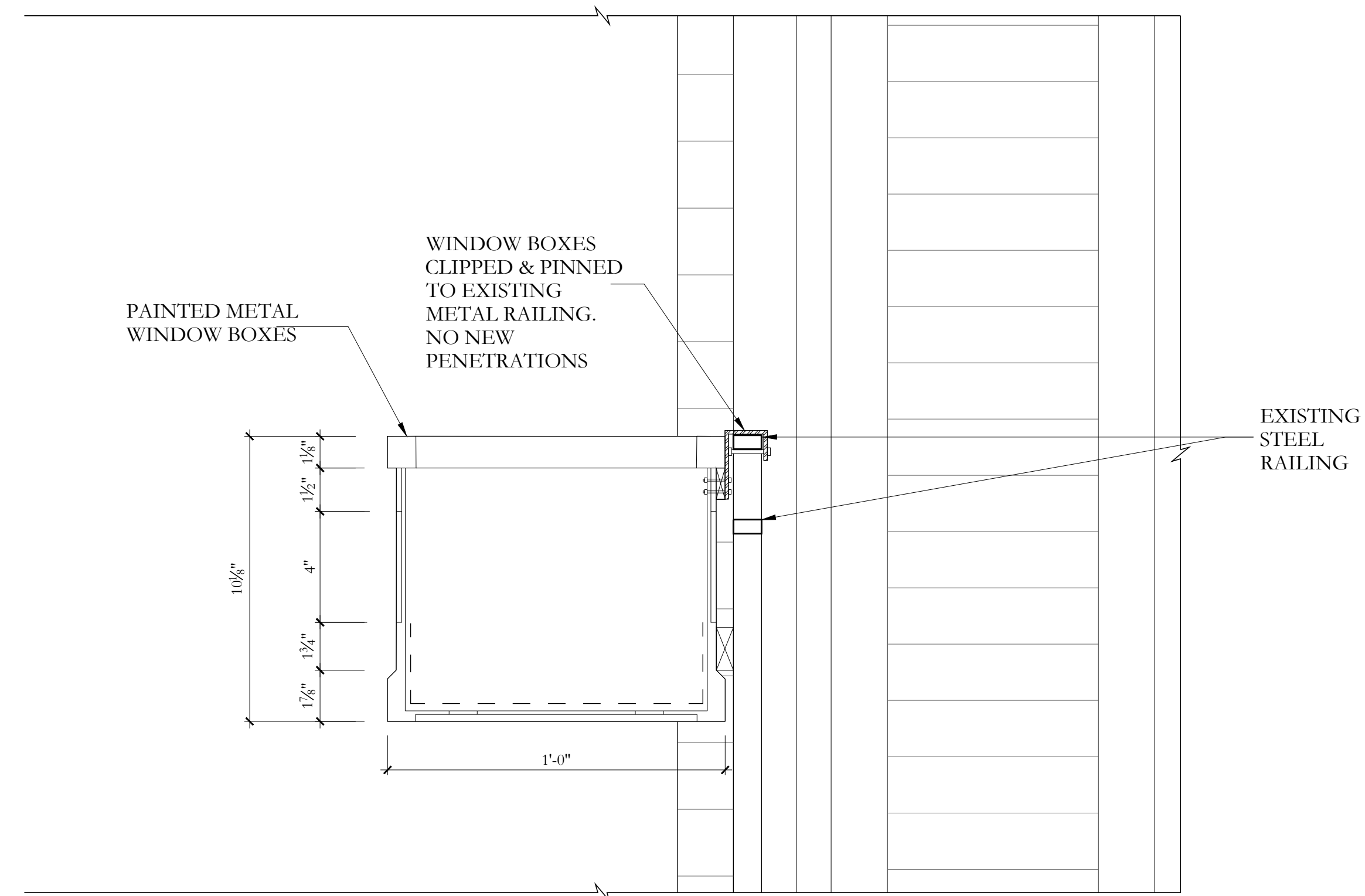
4 BENJAMIN MOORE HALE NAVY
COLOR FOR PAINTED METAL WINDOW BOXES



5 TYPICAL PLAN AT WINDOWS OF 2nd-4th FLOORS
1-1/2" = 1'-0"



6 TYPICAL WINDOW BOX ATTACHMENT AT FLOORS 3 & 4
3" = 1'-0"



7 TYPICAL WINDOW BOX ATTACHMENT AT FLOOR 2
3" = 1'-0"

AWNINGS & WINDOW BOXES
137 W. 11TH STREET
NEW YORK, NY

COMMUNITY BOARD 6 PRESENTATION

ATTACHMENTS & DETAILS

DATE: OCTOBER 17, 2019

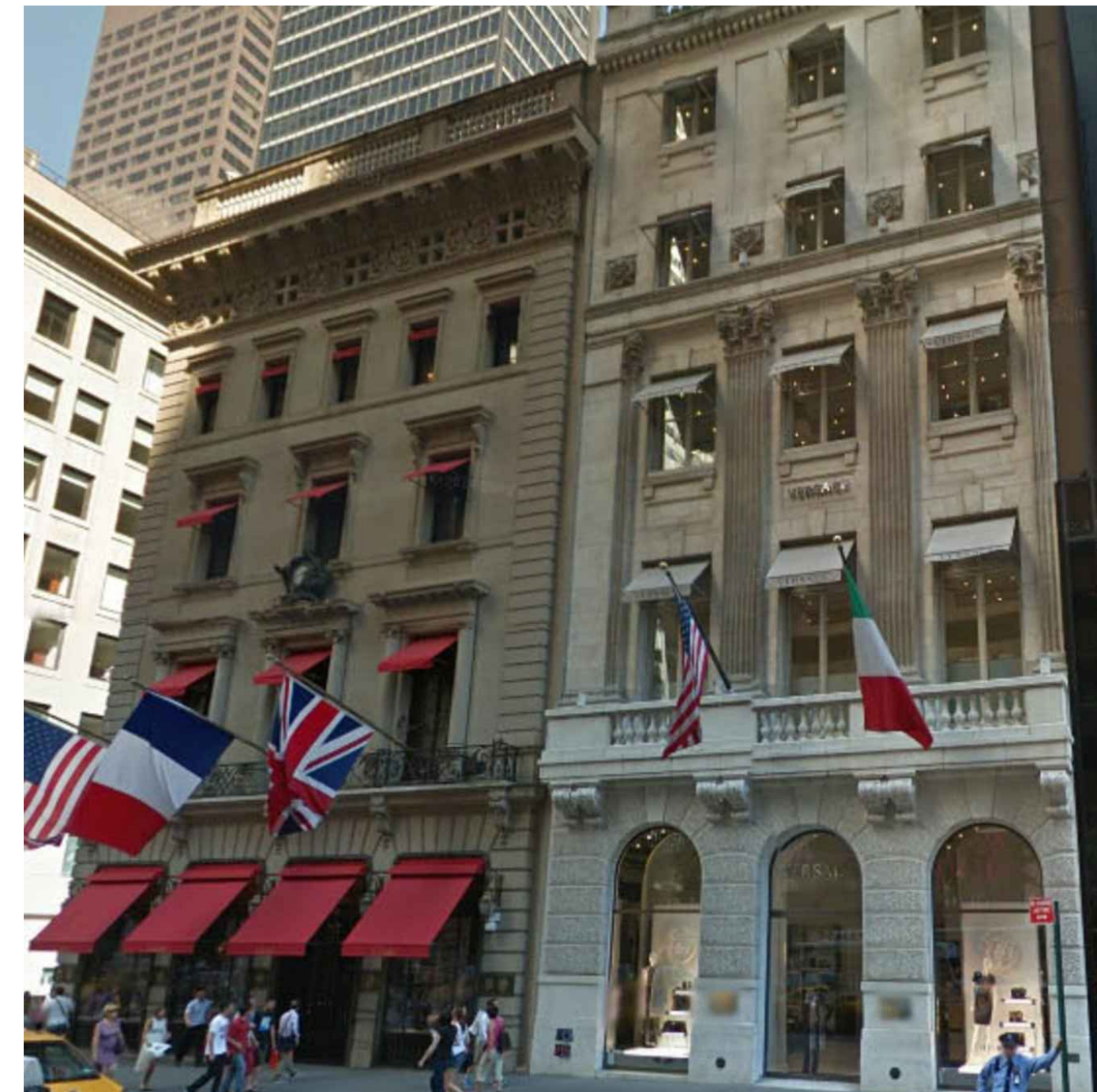
4 OF 5



67 GANSEVOORT STREET



MILES REDD TOWNHOUSE



653 & 647 5TH AVENUE (CARTIER & VERSACE)



HISTORIC HOUSE BY DAVID ADLER

AWNINGS IN
CLOSED AND OPEN
POSITIONS

AWNINGS IN
CLOSED AND OPEN
POSITIONS

1 AWNING PRECEDENT:

BOXES AT SILL
LEVEL



154 WEST 11TH STREET

BOXES BELOW SILL



155 WEST 12TH STREET

2 WINDOW BOX PRECEDENT

AWNINGS & WINDOW BOXES
137 W. 11TH STREET
NEW YORK, NY

COMMUNITY BOARD 6 PRESENTATION

PRECEDENTS

DATE: OCTOBER 17, 2019

5 OF 5



FAIRFAX & SAMMONS
ARCHITECTS PC
2 SHIFFEN COURT NEW YORK CITY 10018
TELEPHONE (212) 258-0704 - FACSIMILE (212) 258-8817 - FAIRFAXANDSAMMONS.COM