

# 17 BLEECKER STREET - NEW YORK, NEW YORK 10012

## DESIGNATION REPORT

BUILT BY FREDERICK EBELING IN 1909  
 FEATURES: SEVEN BAYS, NON HISTORIC STOREFRONTS, FIXED AWNING,  
 SIGNS AND LIGHTS; NON HISTORIC ENTRYWAY TO UPPER FLOORS; NON  
 HISTORIC CEMENT STUCCO COVERED FASCIA ABOVE THE FIRST STORY.

## BUILDING CHARACTERISTICS

ADDRESS: 17 BLEECKER STREET  
 BOROUGH: MANHATTAN  
 BLOCK: 529  
 LOT: 50  
 ZONING MAP NUMBER: 12d  
 ZONING DISTRICT: M1-5B  
 CONSTRUCTION CLASS: CLASS 3 NON-FIREPROOF  
 LANDMARKS DISTRICT: NOHO EAST HISTORIC DISTRICT

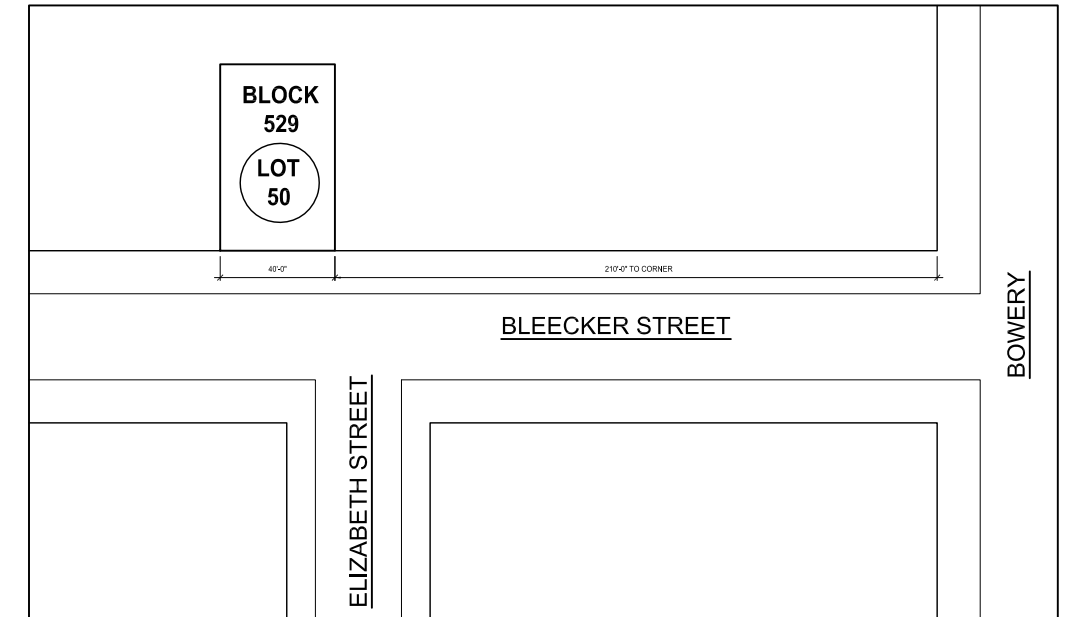
## SCOPE OF WORK

LEGALIZE COVERING THE EASTERN MOST PAINTED BRICK PIER TO MATCH  
 STUCCO IN CONJUNCTION WITH CERTIFICATE OF NO EFFECT NUMBER 19-11252

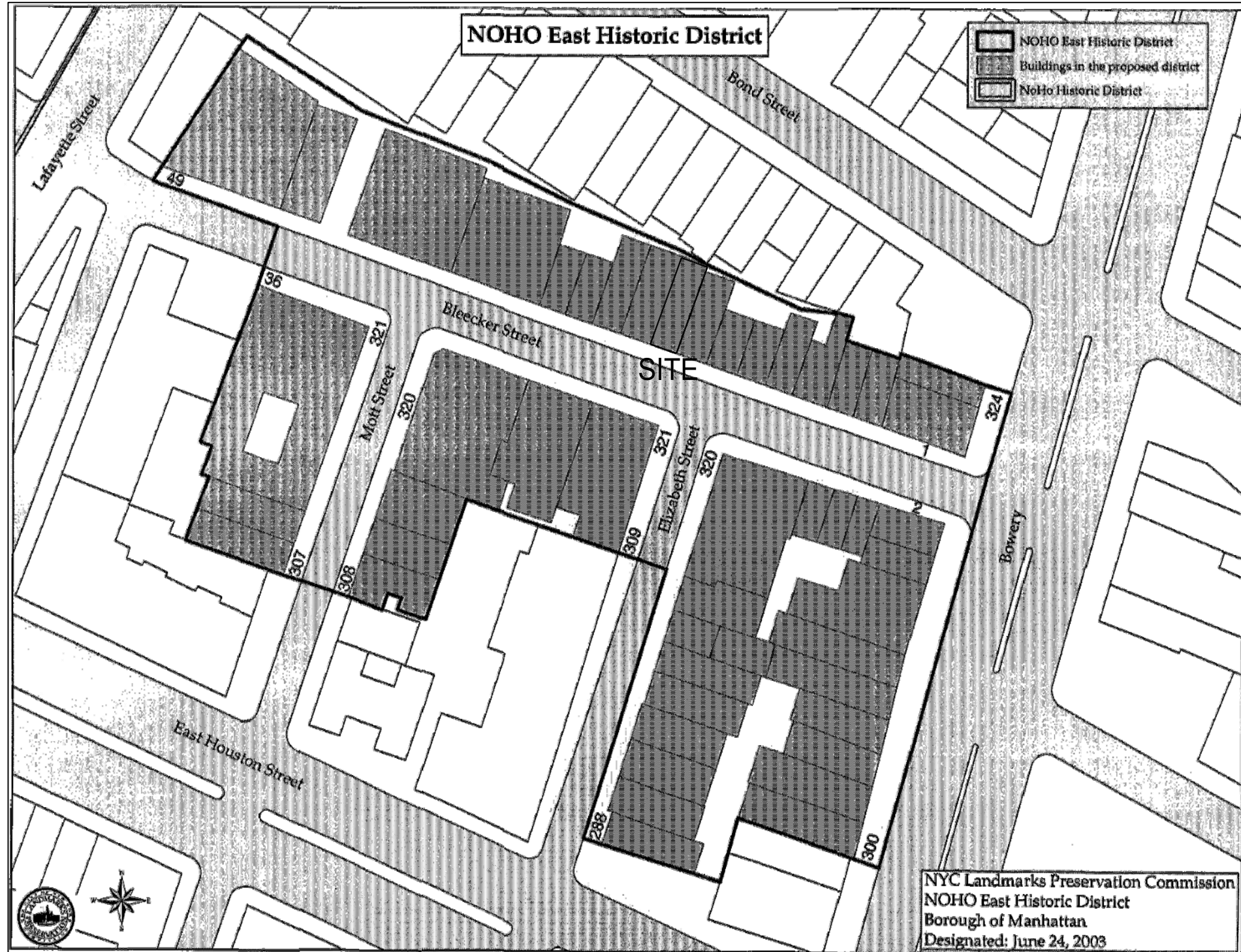
## DRAWING LIST

LPC-1 COVER SHEET  
 LPC-2 HISTORIC PHOTOGRAPHS  
 LPC-3 EXISTING AND PROPOSED STOREFRONTS AND BLOCKFRONTS  
 LPC-4 EXISTING AND PROPOSED RENDERINGS

## PLOT PLAN



## NOHO EAST HISTORIC DISTRICT MAP



## CERTIFICATE OF NO EFFECT - FOR STOREFRONT WORK

THE NEW YORK CITY LANDMARKS PRESERVATION COMMISSION  
 1 CENTER STREET 9TH FLOOR NORTH NEW YORK NY 10007  
 TEL: 312 669-7700 FAX: 312 669-7780

**PERMIT**  
**CERTIFICATE OF NO EFFECT**

ISSUE DATE: 07/14/17	EXPIRATION DATE: 7/14/2021	DOCKET #: LPC-19-11252	CNE CNE-19-11252
ADDRESS: 17 BLEECKER STREET		BOROUGH: Manhattan	BLOCK/LOT: 529 / 50
NoHo East Historic District			

Display This Permit While Work Is In Progress

ISSUED TO:  
**Ariane Goldman**  
 HATCHE  
 413 Broadway  
 8th Floor  
 New York, NY 10013

Pursuant to Section 23-306 of the Administrative Code of the City of New York, the Landmarks Preservation Commission hereby approves certain alterations to the subject premises as proposed in your application completed on July 13, 2017.

The approved work consists of work at the east-facing storefront of the South (Bleeker Street) facade, including removing existing aluminum storefront infill, including metal cellar hatch door, roll-down security gate, display windows, transom, and paired entrance doors; installing steel storefront infill, featuring single-light fixed display windows, a paired glass and steel door with a single light transom window, a new metal hatch door; maintaining the stucco bulkhead and sign band and incorporating this into the storefront design; painting the storefront, metal hatch door, and sign band dark pink (Benjamin Moore "Vibrant Blush"); installing pin-mounted black painted metal letters ("Hatch") at the sign band and the installation of (2) goose-neck light fixtures; removing three (3) one-over-one double hung windows and replacement with three (3) steel casement windows at the first floor at the north (rear) facade; removing one (1) window unit and the installation of one (1) new window unit at the rear awning; as shown in existing condition photographs and drawings LPC-1 through LPC-4 dated July 13, 2017, prepared by Roman Sorokko, R.A., and submitted as components of the application.

In reviewing this proposal, the Commission notes that the NoHo Historic District Designation Report



1940's TAX PHOTOGRAPH



1940's TAX PHOTOGRAPH



LPC DESIGNATION PHOTOGRAPH



1 - BLOCK VIEW 2016

17 BLEECKER ST



2 - BLOCK VIEW PRESENT-DAY (2018)

17 BLEECKER ST

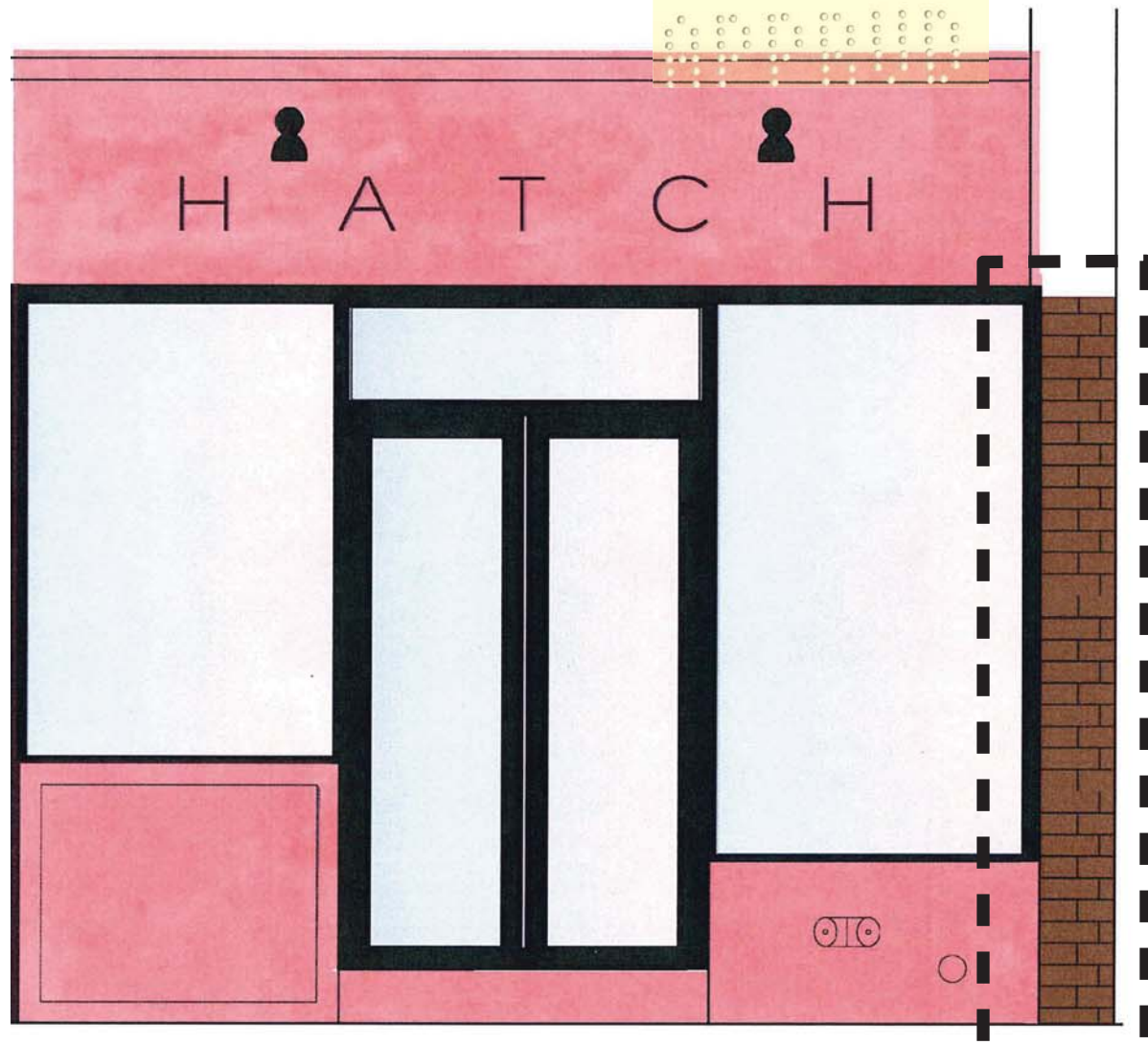


3 - 17 BLEECKER STREET - BEFORE (APRIL 2017)

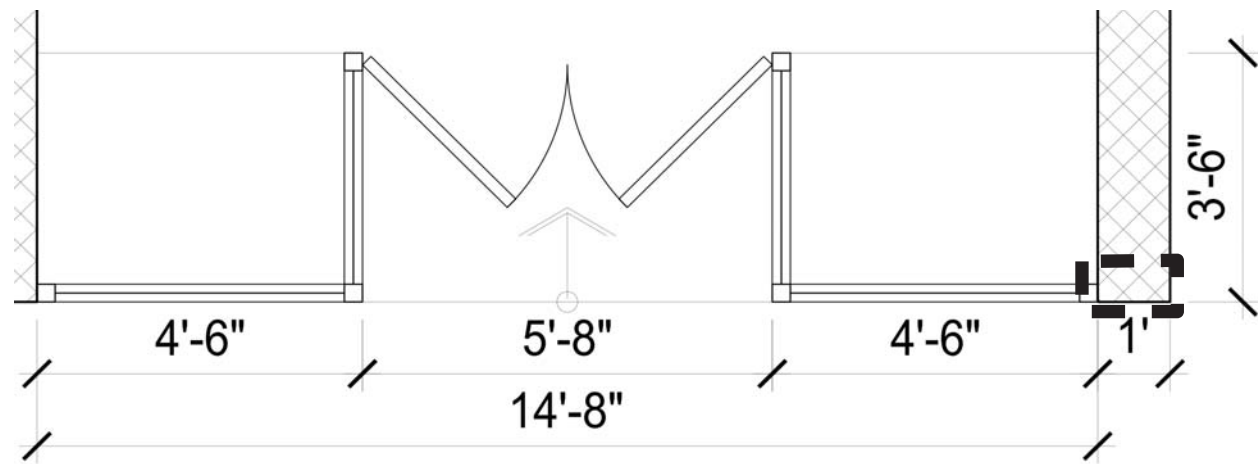


4 - 17 BLEECKER STREET - AFTER (SEPTEMBER 2017)

1 - LPC STAFF APPROVED (7-14-17) STOREFRONT RENDERING

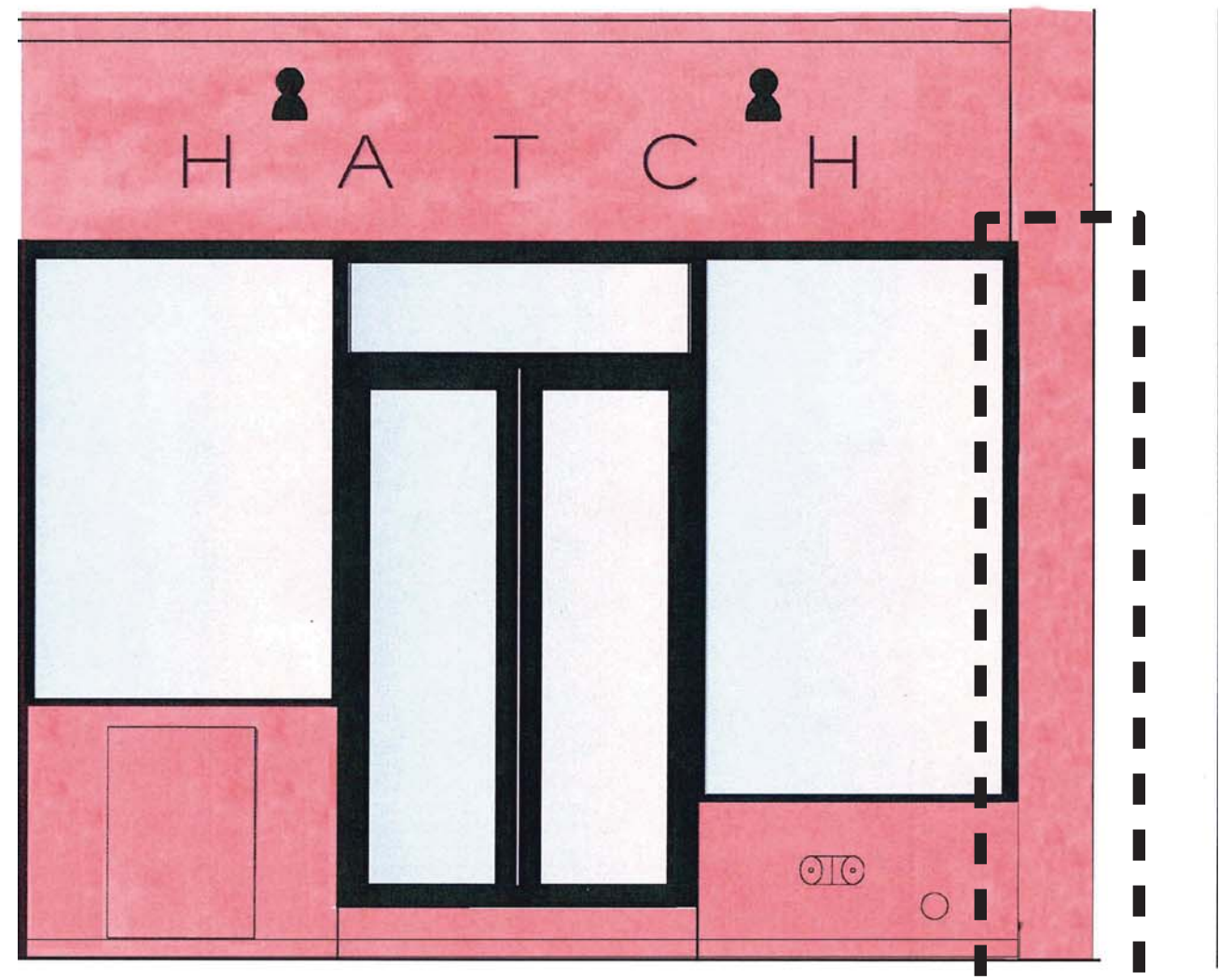


PAINTED BROWN BRICK (WAS EXISTING)

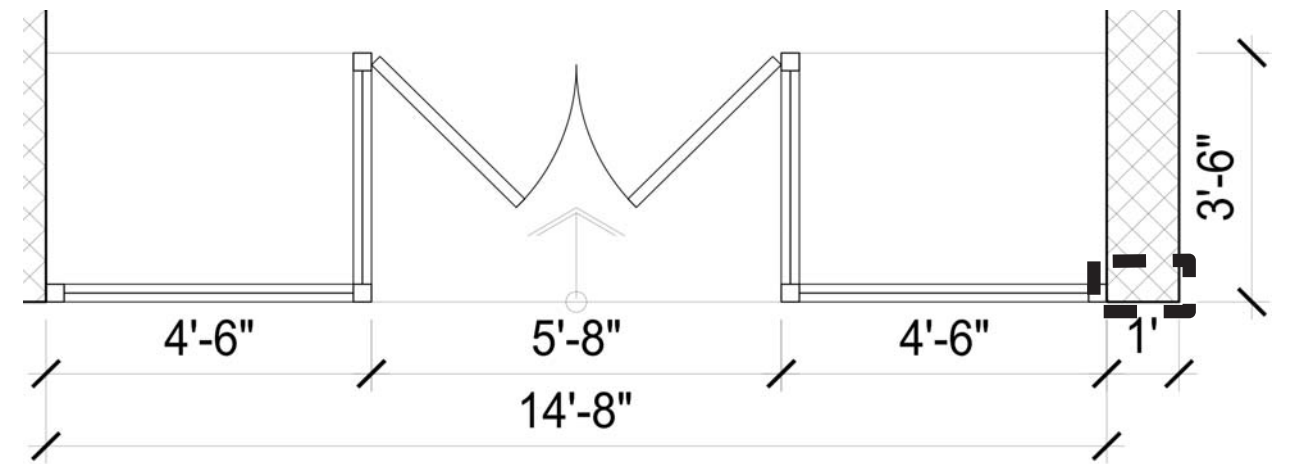


2 - LPC STAFF APPROVED PLAN

3 - PROPOSED STOREFRONT RENDERING



PINK TO MATCH APPROVED STOREFRONT



4 - CURRENT PLAN