

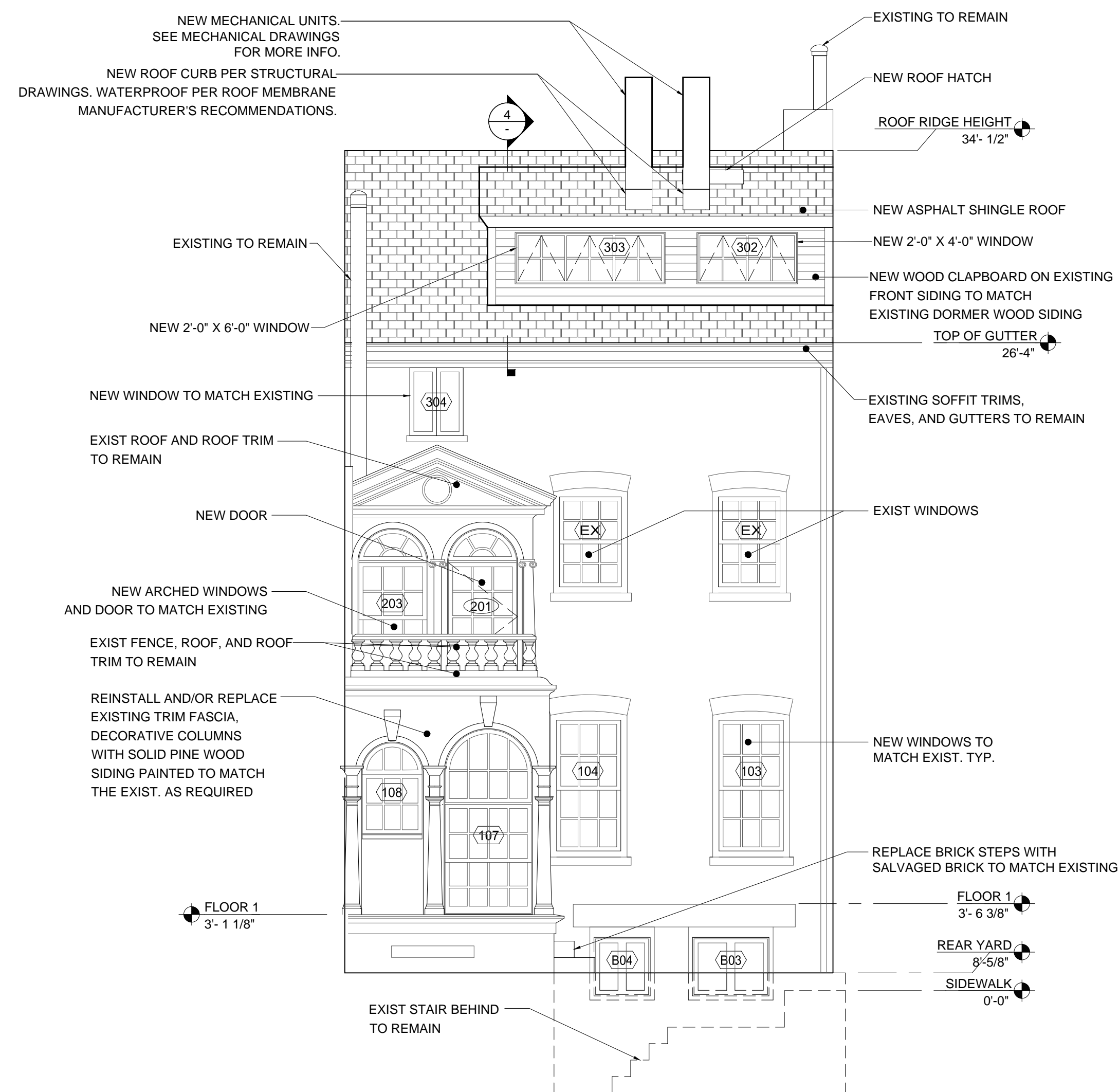
NANCY HOLWELL

ARCHITECT

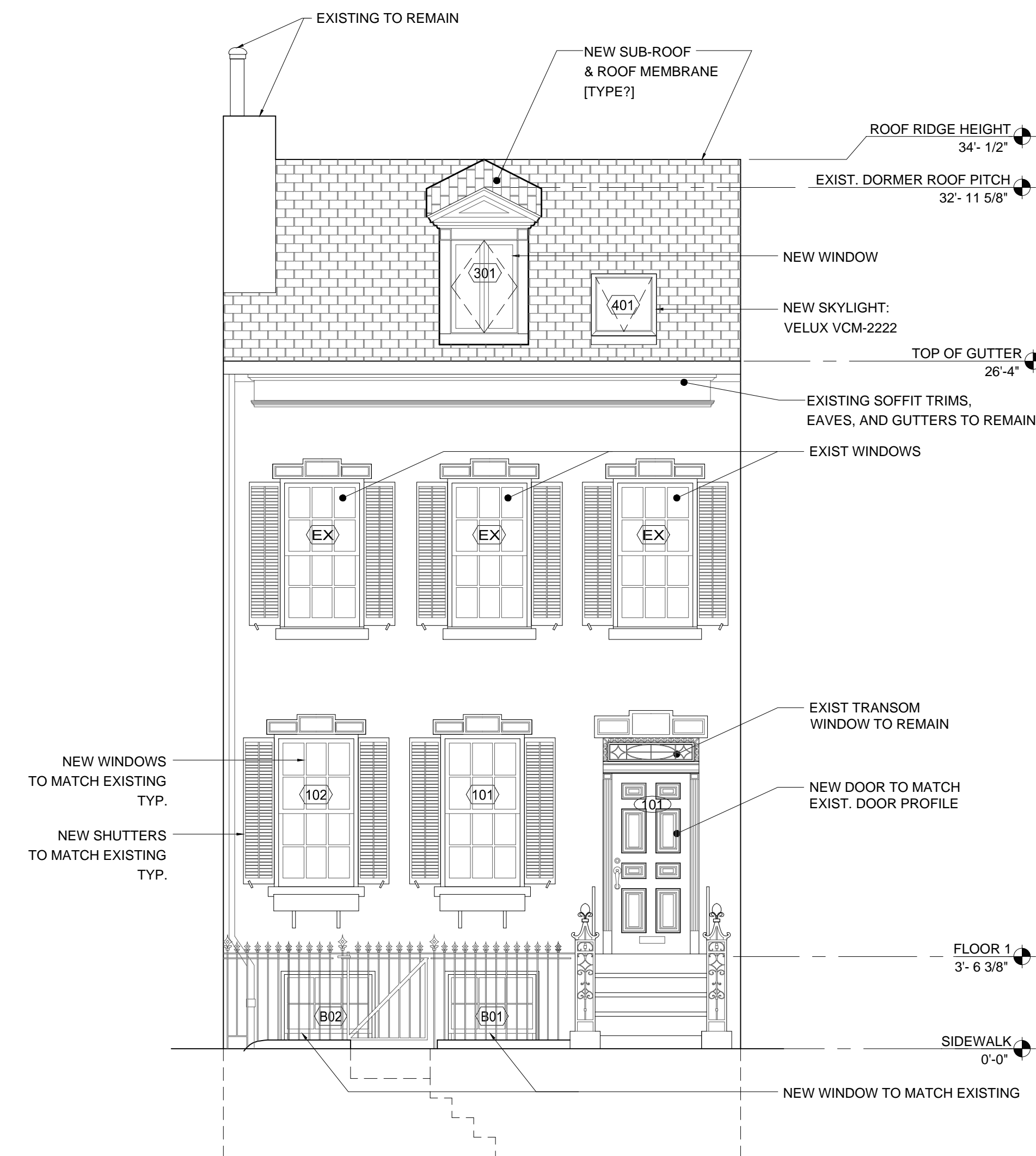
250 West 26th Street New York, NY 10001

Phone: (212) 307/0688 Fax: (212) 242/3304

office@nharchitect.com



2 EXTERIOR ELEVATION NORTH (REAR YARD)
SCALE: 1/4"=1'-0" ON 24" X 36" SCALE: 1/8"=1'-0" 11" X 17"



1 EXTERIOR ELEVATION SOUTH (STREET FACADE)
SCALE: 1/4"=1'-0" ON 24" X 36" SCALE: 1/8"=1'-0" 11" X 17"

09.08.15 Community Board Presentation
issue / revisions

Project:
**17 COMMERCE STREET
NEW YORK, NY 10014**

Drawing title:
**PROPOSED
ELEVATIONS**

date	09/08/2015
project no.	
scale	AS NOTED
drawn by	

dwg. no.
A202.00

Bldg Dept No.

COPYRIGHT © 2015 NANCY HOLWELL ARCHITECT