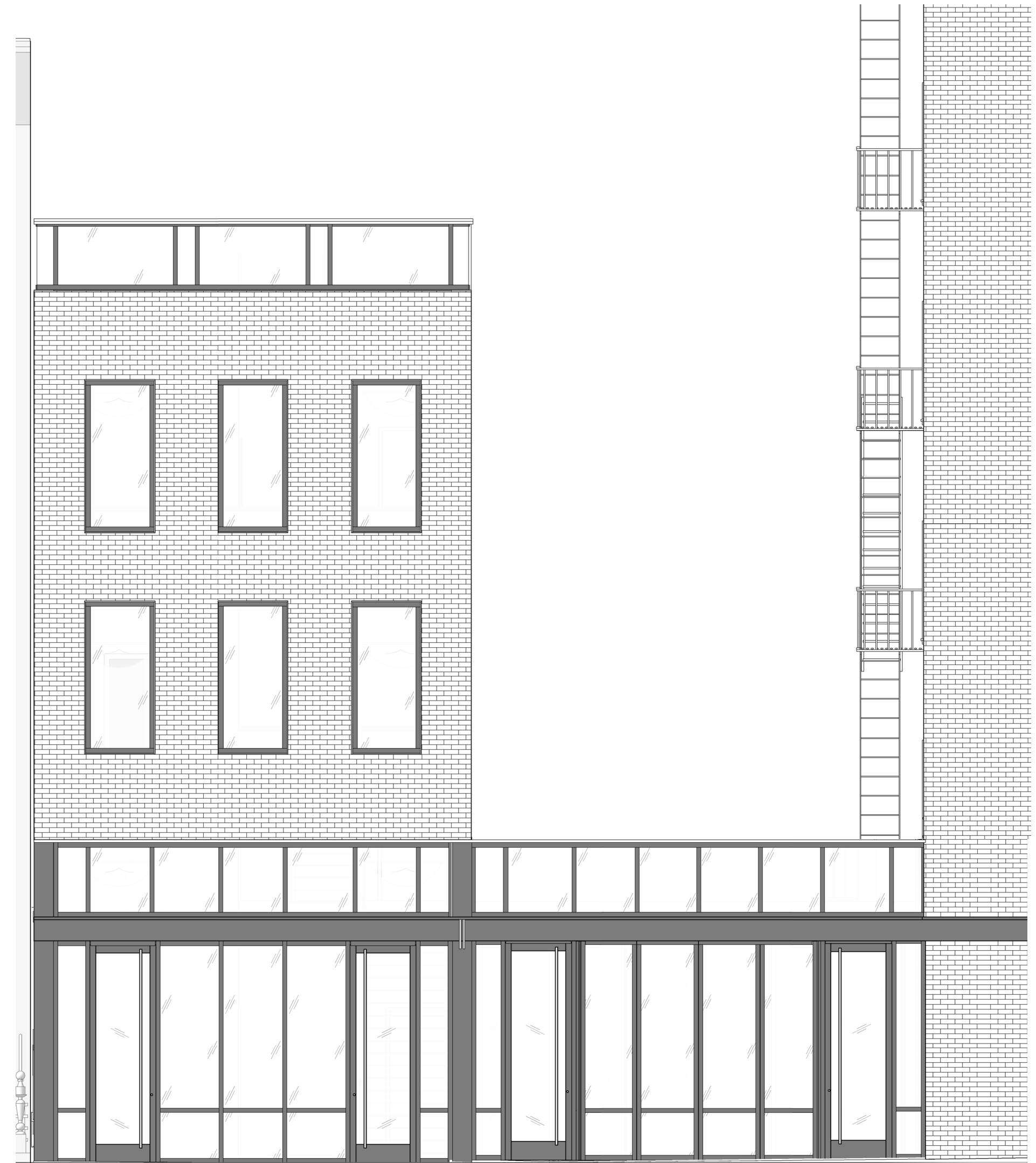


REVISED PROPOSAL



ORIGINAL PROPOSAL



REVISED PROPOSAL

200 PRINCE STREET & 202 AVENUE OF THE AMERICAS
ELEVATIONS - 200 PRINCE STREET AND 202 AVENUE OF THE AMERICAS

SHEET NO 2 OF 9

06/24/2019

TRA
STUDIO



ORIGINAL PROPOSAL



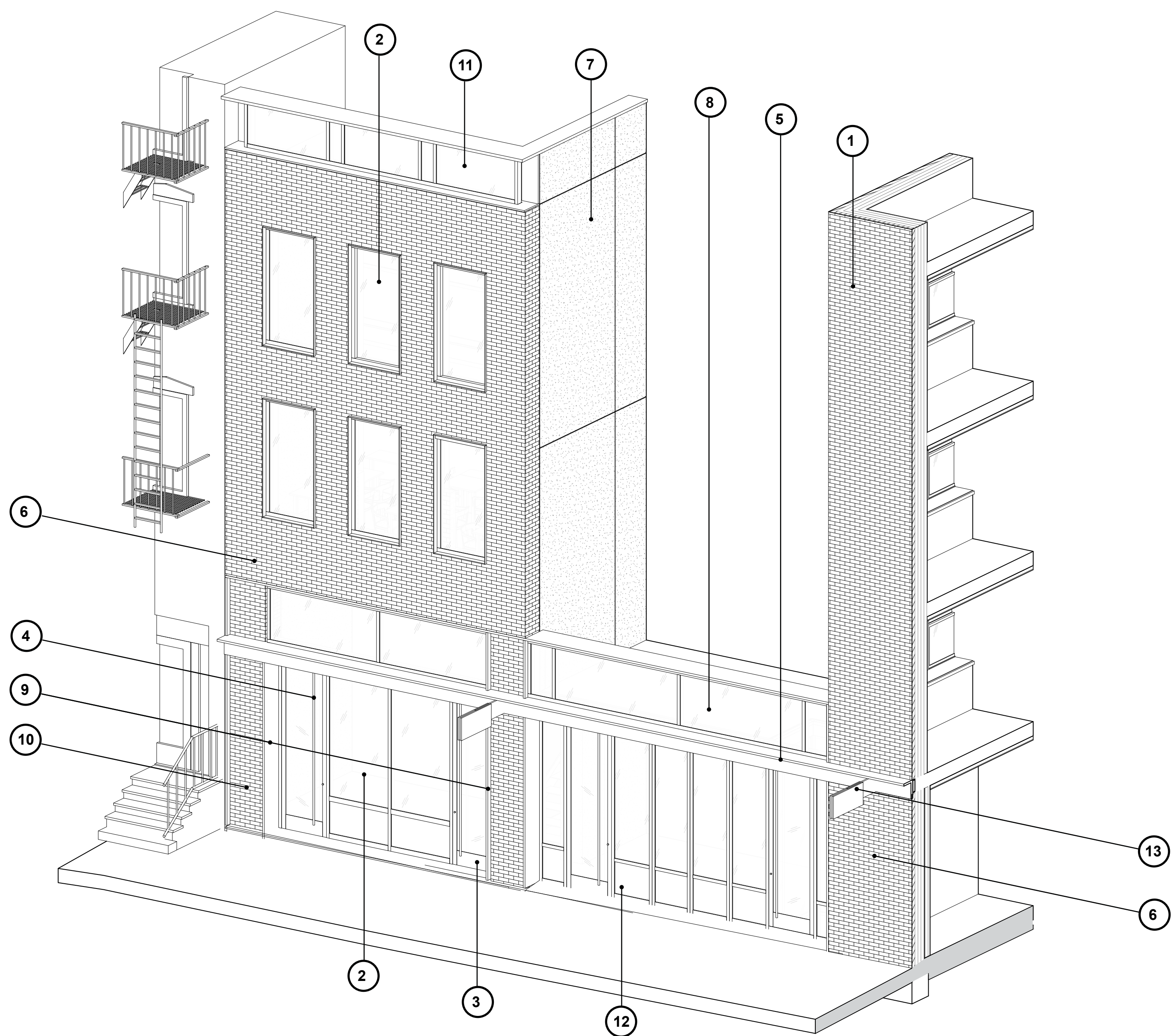
VIEW FROM PRINCE STREET, TOWARDS AVENUE OF THE AMERICAS



VIEW ACROSS 200 PRINCE STREET

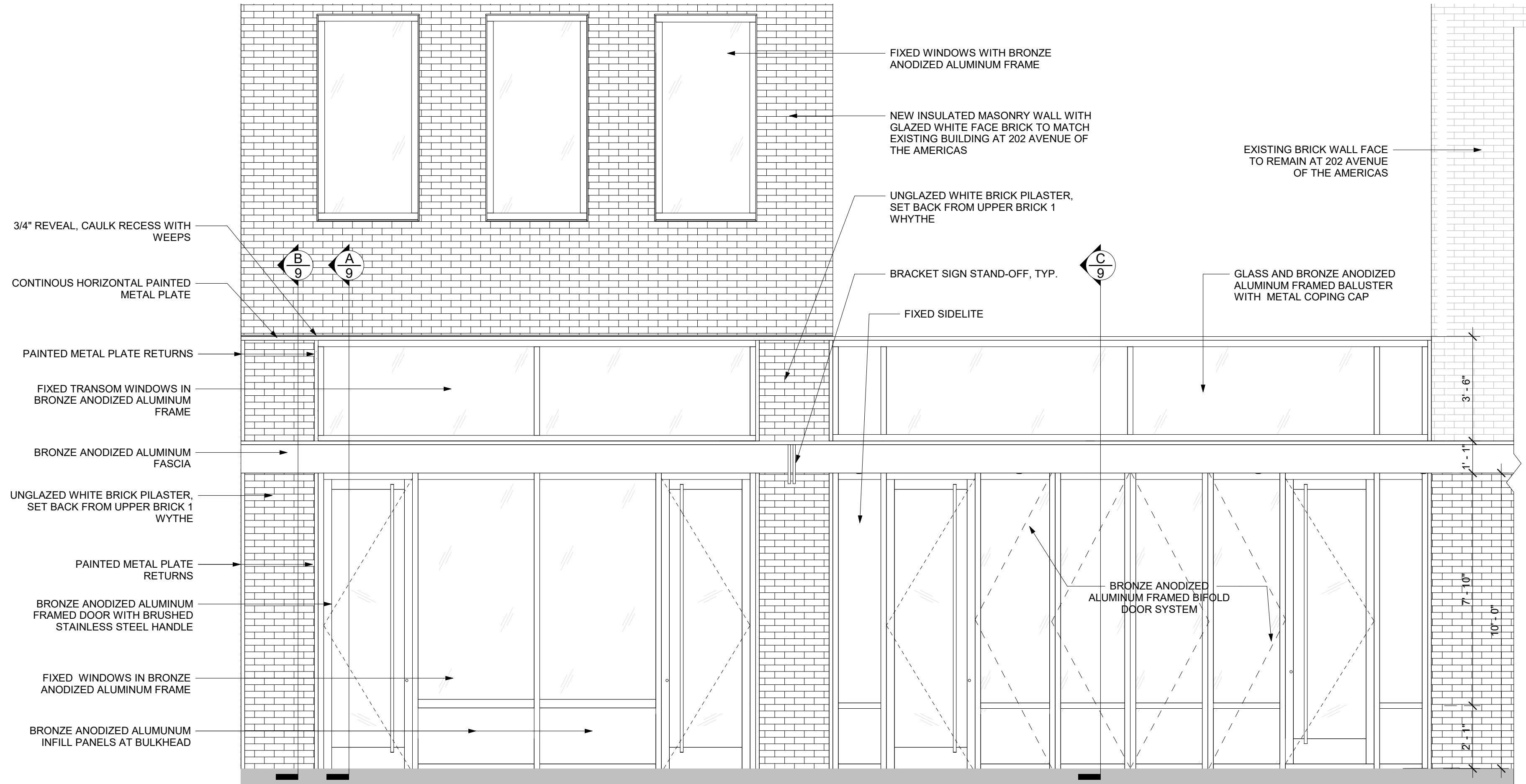


VIEW FROM THE CORNER OF MACDOUGAL STREET AND PRINCE STREET

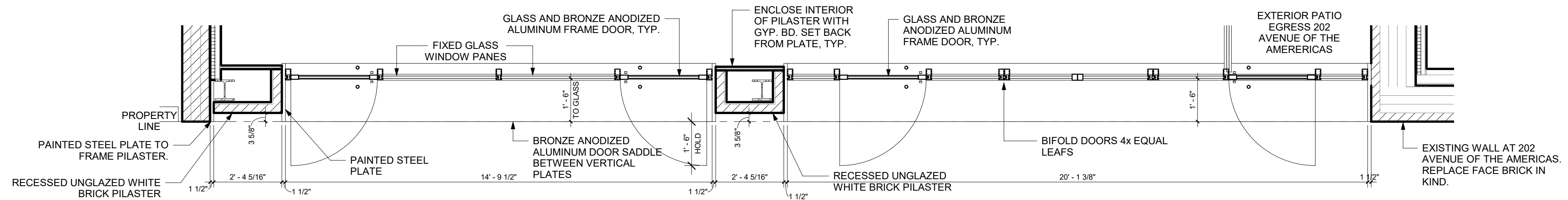


MATERIAL KEY:

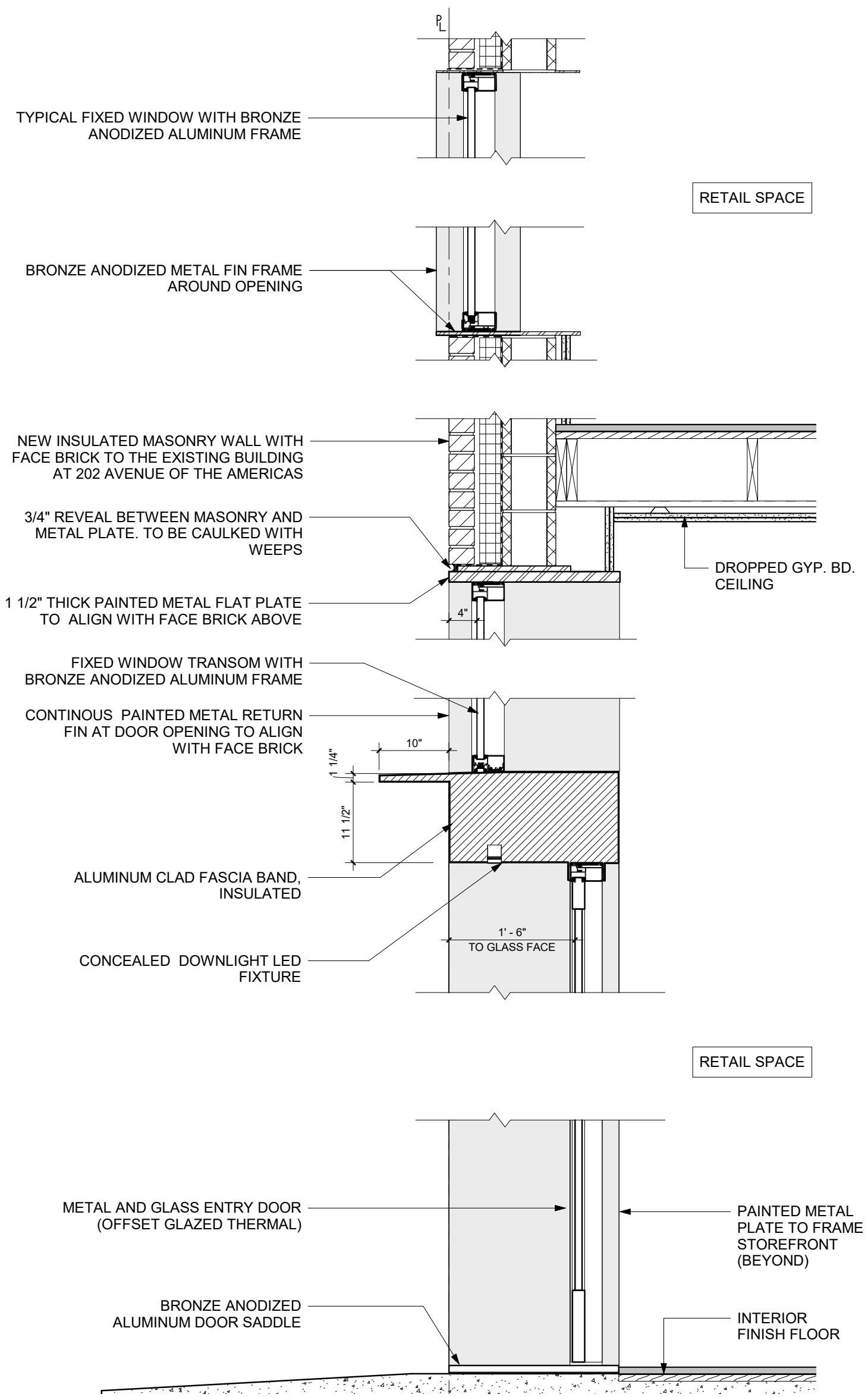
- ① EXISTING WALL TO REMAIN
- ② FIXED WINDOW WITH BRONZE ANODIZED METAL FRAME
- ③ GLASS AND ALUMINUM DOOR
- ④ BRUSHED STAINLESS STEEL DOOR HANDLE
- ⑤ BRONZE ANODIZED ALUMINUM FASCIA
- ⑥ FACE BRICK TO MATCH EXISTING GLAZED WHITE BRICK AT 202 AVENUE OF THE AMERICAS
- ⑦ STUCCO FINISH OVER EXISTING BRICK WALL
- ⑧ GLASS AND BRONZE ANODIZED METAL GUARDRAIL
- ⑨ BRONZE ANODIZED METAL PLATE RETURN
- ⑩ UNGLAZED WHITE BRICK PILASTER, SET BACK 1 WHYTHE OF BRICK
- ⑪ GLASS AND POWDER-COATED METAL RAIL AT PARAPET
- ⑫ BRONZE ANODIZED ALUMINUM FRAME BIFOLD INSWING DOORS
- ⑬ BRONZE ANODIZED METAL BRACKET SIGN



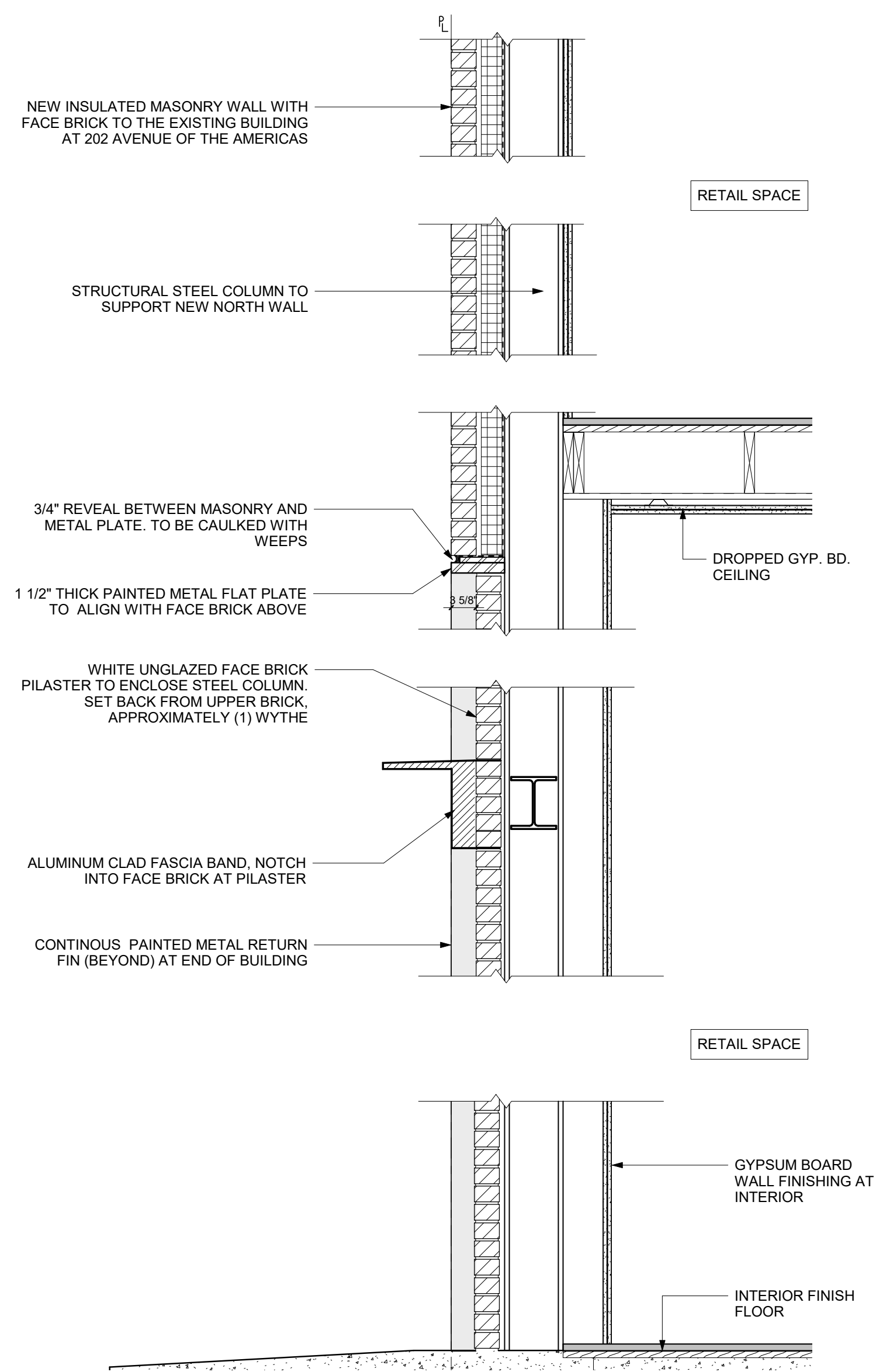
1 PROPOSED ENTRANCE- 200 PRINCE - ENLARGED ELEVATION
SCALE: 1/2" = 1'-0"



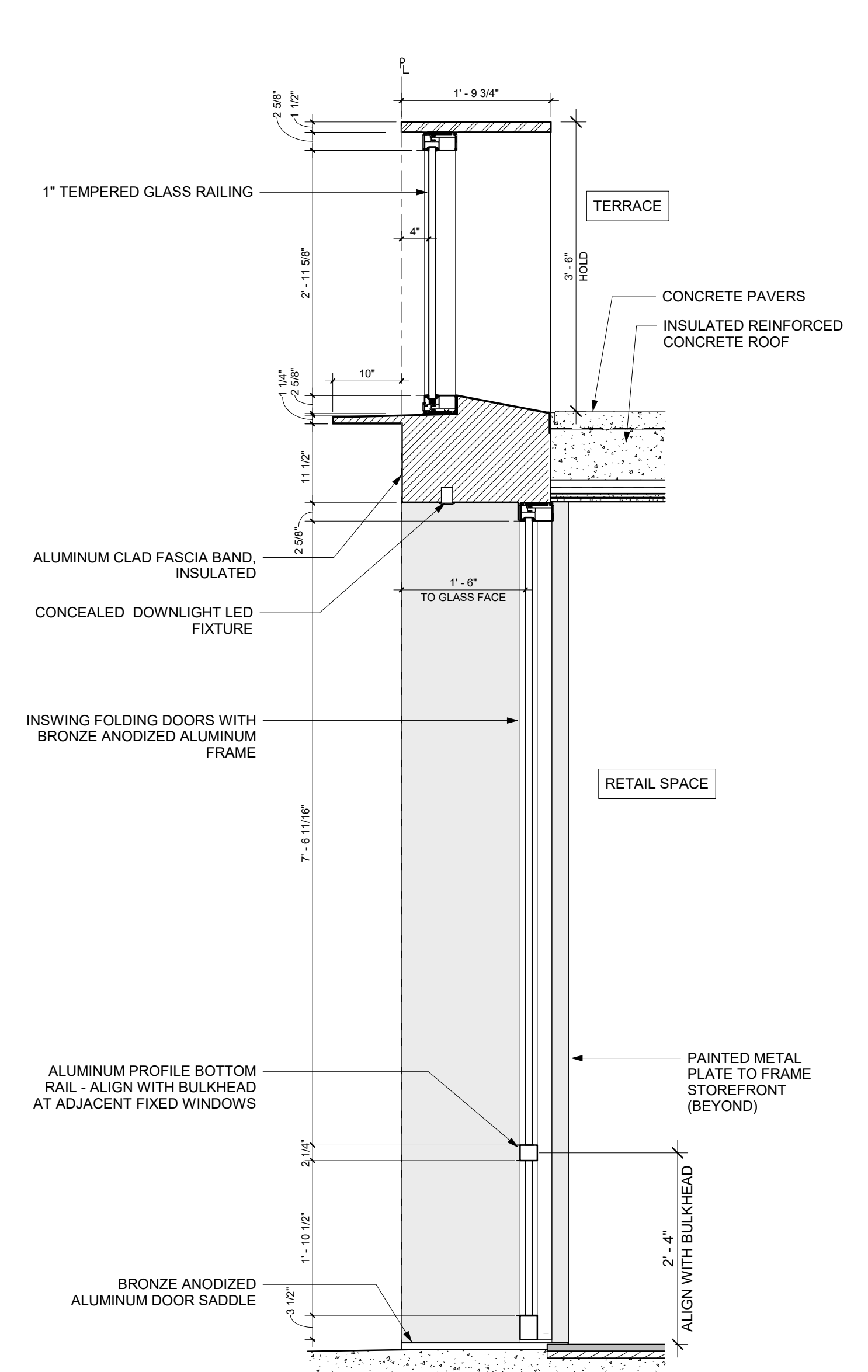
2 PROPOSED ENTRANCE -200 PRINCE - ENLARGED PLAN
SCALE: 1/2" = 1'-0"



A PROPOSED SECTION AT ENTRY DOOR
SCALE: 1" = 1'-0"



B PROPOSED SECTION AT ENTRY DOOR
SCALE: 1" = 1'-0"



C PROPOSED SECTION AT BI-FOLD DOORS
SCALE: 1" = 1'-0"