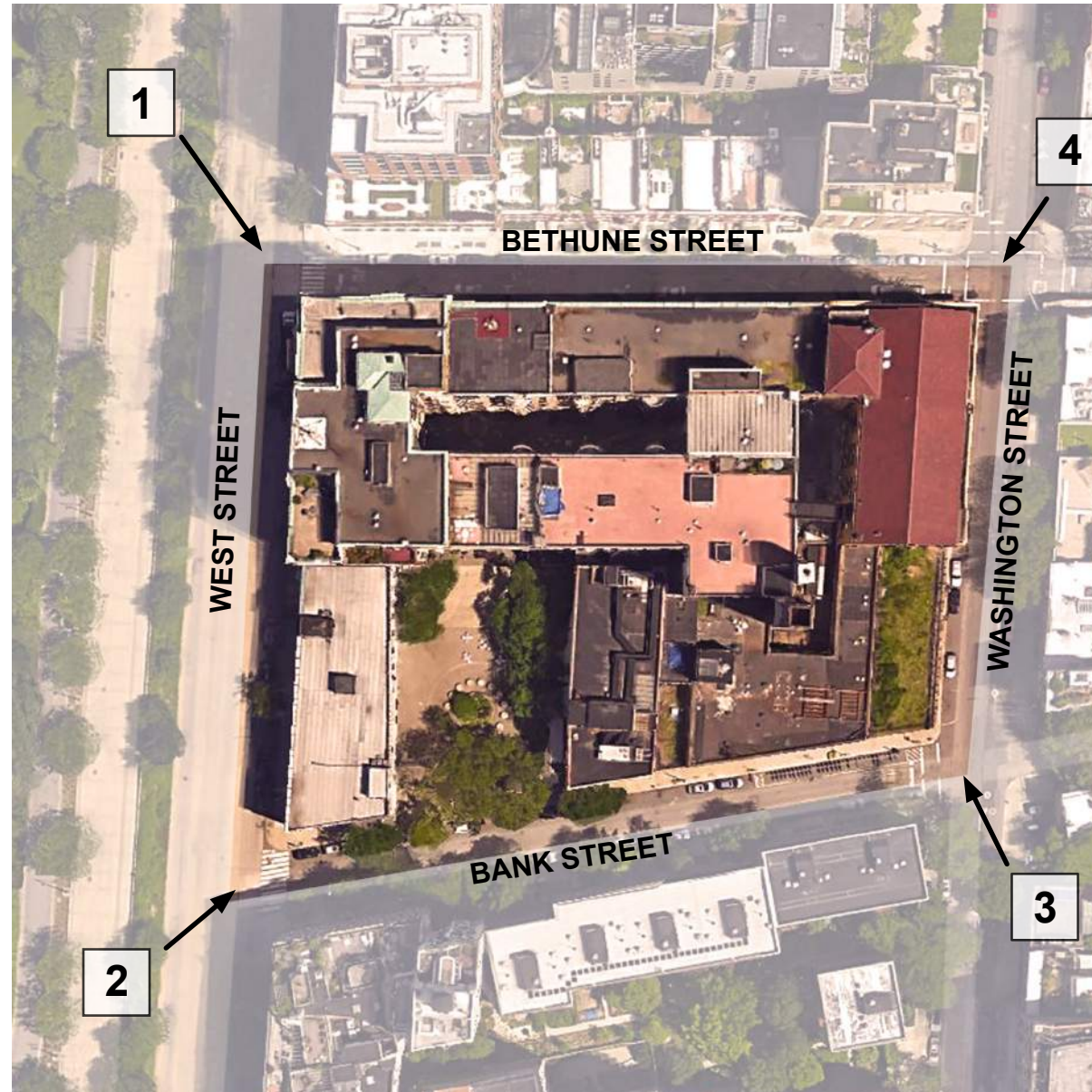




AERIAL VIEWS FROM ALL EXISTING  
MAIN CORNERS OF WESTBETH COMPLEX



SITE LOCATION

**WESTBETH ARTISTS' HOUSING**  
463 WEST STREET  
NEW YORK, NY. 10014

**PROJECT LOCATION:**

BLOCK: 0639  
LOT: 01  
LOT AREA: 96,999 +/- SF  
LOT FRONTAGE: 294 FT  
LOT DEPTH: 374 FT  
NUMBER OF FLOORS: 13  
GROSS FLOOR AREA: 542,808 +/- SF  
RESIDENTIAL UNITS: 384  
TOTAL # UNITS: 384  
ZONING: C6-3  
COMMUNITY BOARD: 102  
CENSUS TRACT: 79

**SCOPE OF PROPOSED EXTERIOR WORK AT  
WEST STREET PASSAGEWAY [SECTION A]:**

- REMOVE AND REBUILD EXISTING STAIR TO MATCH EXISTING
- PROVIDE ADA CONCRETE RAMP AT WEST STREET PASSAGEWAY ENTRANCE FROM BOTTOM OF EXISTING CONCRETE STAIR UP TO EXISTING COURTYARD.

**ARCHITECT:**

**PEREZ ARCHITECTURE**  
86 34TH STREET, SUITE D-601  
BROOKLYN, NY 11232

**PRESERVATION CONSULTANT:**

**AYON STUDIO**  
41 UNION SQUARE WEST  
SUITE 516  
NEW YORK, NY 10003



BUILDING SECTIONS WITHIN THE BELL TELEPHONE LABORATORIES COMPLEX

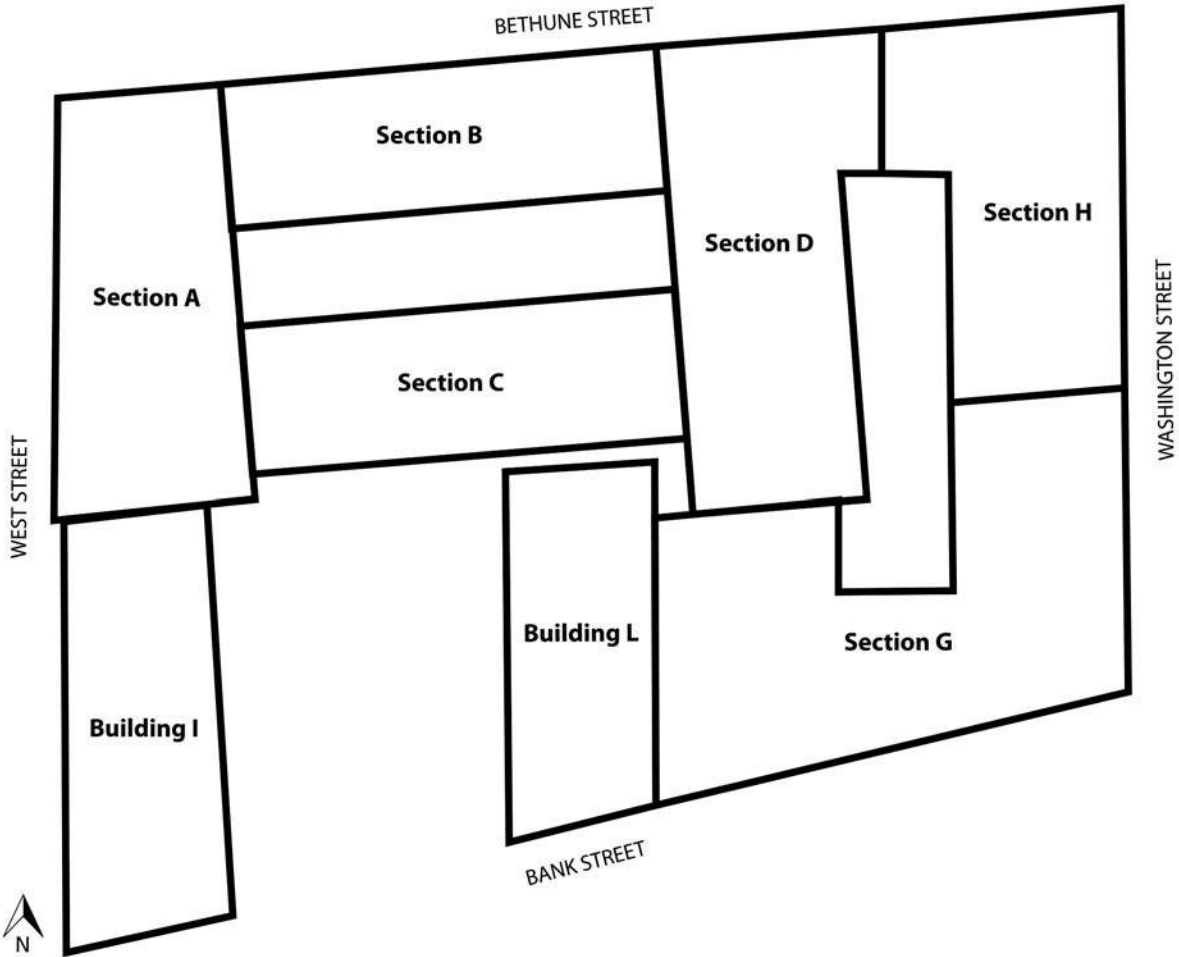


Note: The building Sections depicted on this map are the historic Section denominations used by the Western Electric Co. and Bell Labs (At the time of designation, Westbeth uses a slightly different Section arrangement).

WESTBETH ARTISTS' HOUSING  
463 WEST STREET  
NEW YORK, NY. 10014

BUILDING SECTIONS

NOTE:  
LPC DESIGNATIONS ARE USED  
THROUGHOUT THIS REPORT;  
REFERENCES ON THE CONSTRUCTION  
DOCUMENTS USE THE CURRENT BUILDING  
SECTION ARRANGMENT AS NOTED BELOW:



Westbeth Artists' Housing, Section arrangement used by Westbeth



ARCHITECT:

**PEREZ ARCHITECTURE**  
86 34TH STREET, SUITE D-601  
BROOKLYN, NY 11232

PRESERVATION CONSULTANT:

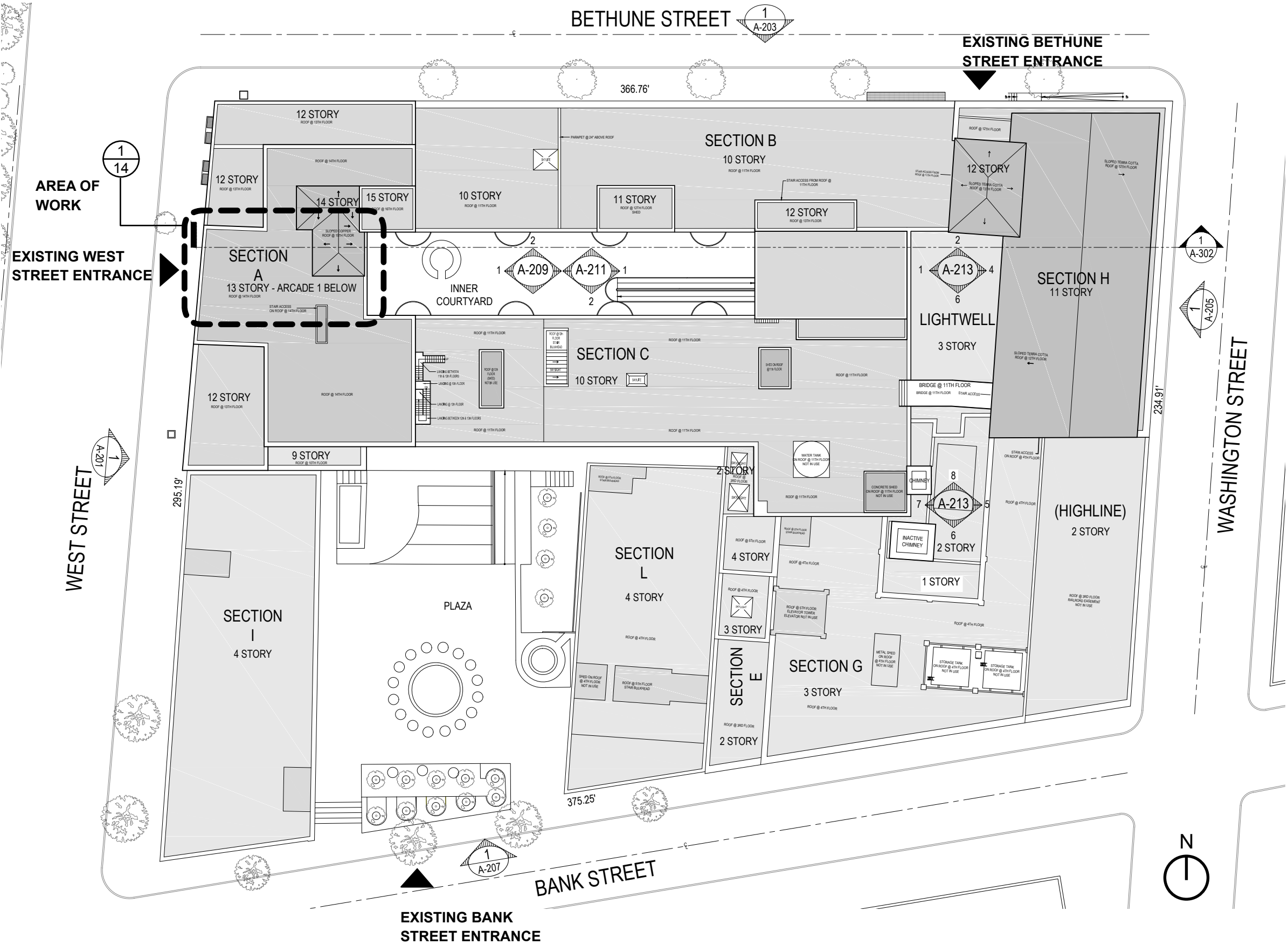
**AYON STUDIO**  
41 UNION SQUARE WEST  
SUITE 516  
NEW YORK, NY 10003

**WESTBETH ARTISTS' HOUSING**  
463 WEST STREET  
NEW YORK, NY. 10014

**EXISTING SITE PLAN**

LEGEND:

▲ EXISTING ENTRANCE



ARCHITECT:

**PEREZ ARCHITECTURE**  
86 34TH STREET, SUITE D-601  
BROOKLYN, NY 11232

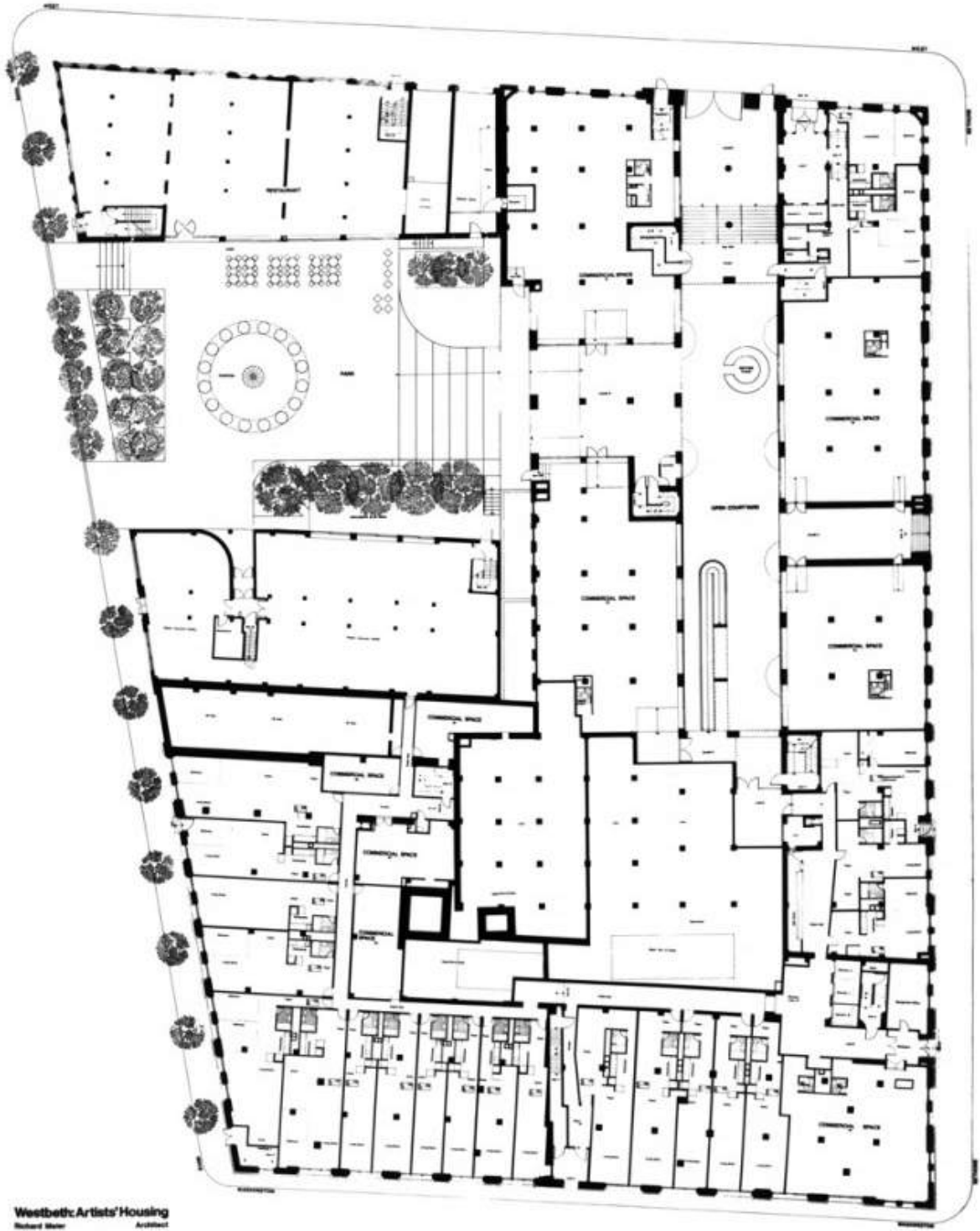
PRESERVATION CONSULTANT:

**AYON STUDIO**  
41 UNION SQUARE WEST  
SUITE 516  
NEW YORK, NY 10003



**WESTBETH ARTISTS' HOUSING**  
463 WEST STREET  
NEW YORK, NY. 10014

**RICHARD MEIER PLAN**  
**HISTORIC PHOTOGRAPH**



**WESTBETH FLOOR PLAN WITH COURTYARD**  
**BY RICHARD MEIER**



**VIEW OF COURTYARD FROM TOP OF RAMP**  
**PHOTO BY EZRA STOLLER**  
**@ EZRA STOLLER/ESTO**

*ARCHITECT:*

**PEREZ ARCHITECTURE**  
86 34TH STREET, SUITE D-601  
BROOKLYN, NY 11232

*PRESERVATION CONSULTANT:*

**AYON STUDIO**  
41 UNION SQUARE WEST  
SUITE 516  
NEW YORK, NY 10003

**WESTBETH ARTISTS' HOUSING**  
463 WEST STREET  
NEW YORK, NY. 10014

**HISTORIC PHOTOGRAPH**



*ARCHITECT:*

**PEREZ ARCHITECTURE**  
86 34TH STREET, SUITE D-601  
BROOKLYN, NY 11232

*PRESERVATION CONSULTANT:*

**AYON STUDIO**  
41 UNION SQUARE WEST  
SUITE 516  
NEW YORK, NY 10003

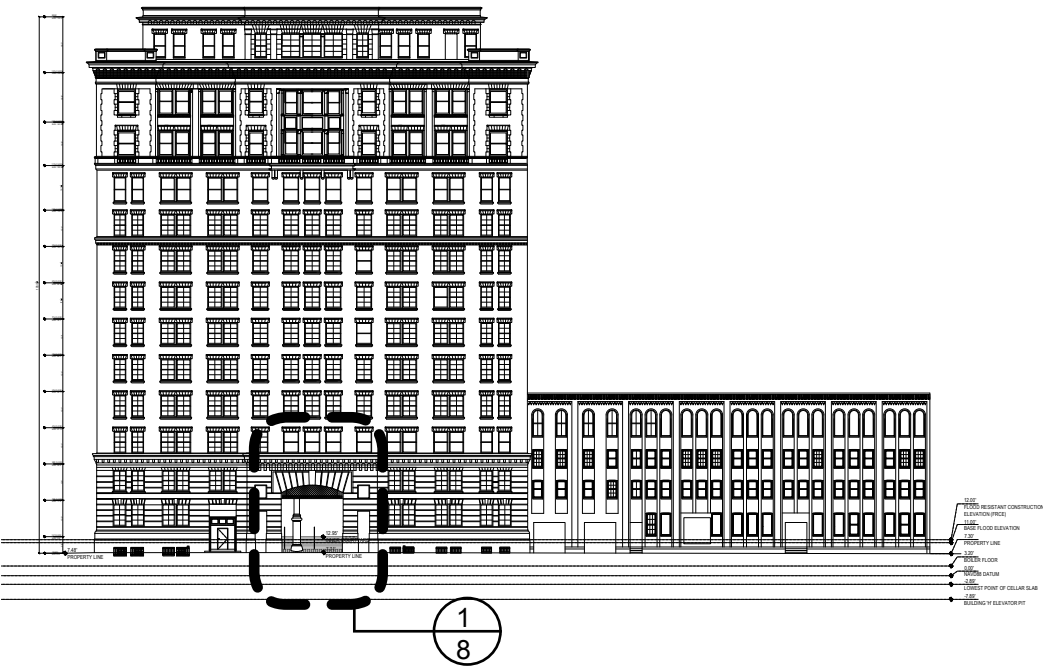
PAGE 5

VIEW OF COURTYARD FROM WEST STREET PASSAGEWAY  
PHOTO BY EZRA STOLLER  
@ EZRA STOLLER/ESTO

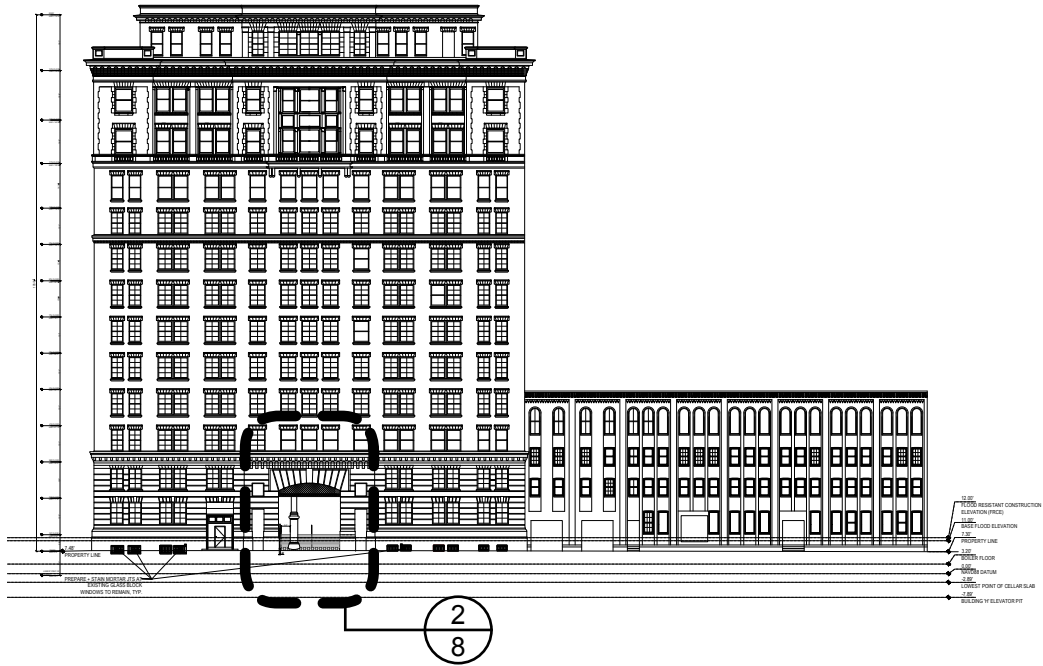


**WESTBETH ARTISTS' HOUSING**  
463 WEST STREET  
NEW YORK, NY. 10014

**EXISTING WEST STREET FACADE  
ELEVATIONS AND PHOTOGRAPH**



EXISTING ELEVATION OF WEST STREET PASSAGEWAY ENTRANCE



PROPOSED ELEVATION OF WEST STREET PASSAGEWAY ENTRANCE - WITH ADA RAMP



*ARCHITECT:*

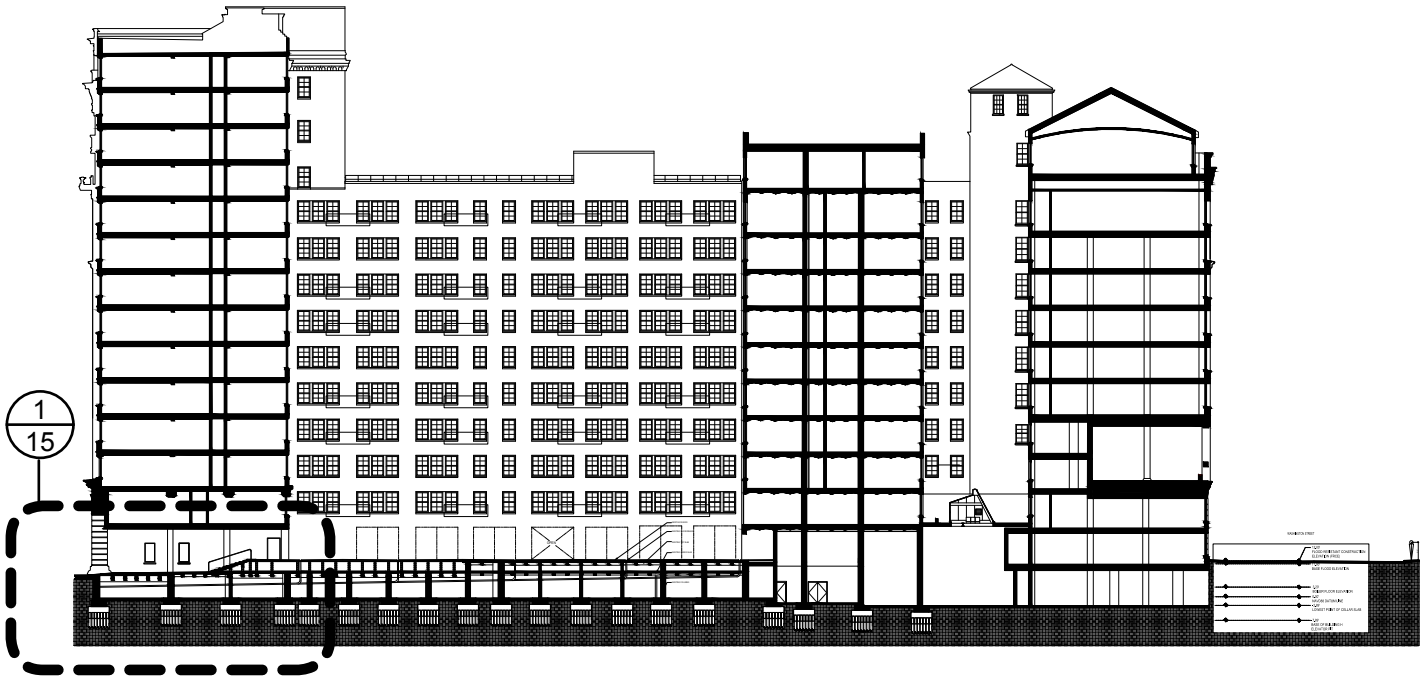
**PEREZ ARCHITECTURE**  
86 34TH STREET, SUITE D-601  
BROOKLYN, NY 11232

*PRESERVATION CONSULTANT:*

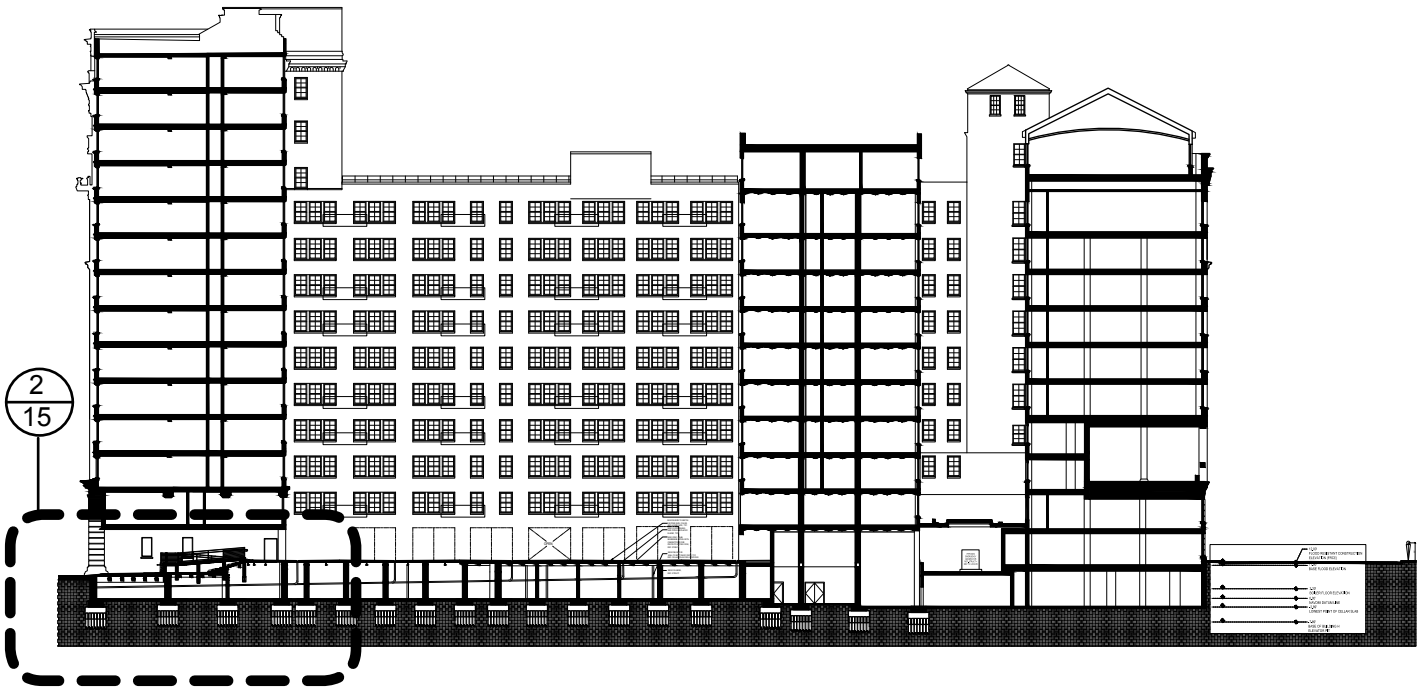
**AYON STUDIO**  
41 UNION SQUARE WEST  
SUITE 516  
NEW YORK, NY 10003

**WESTBETH ARTISTS' HOUSING**  
463 WEST STREET  
NEW YORK, NY. 10014

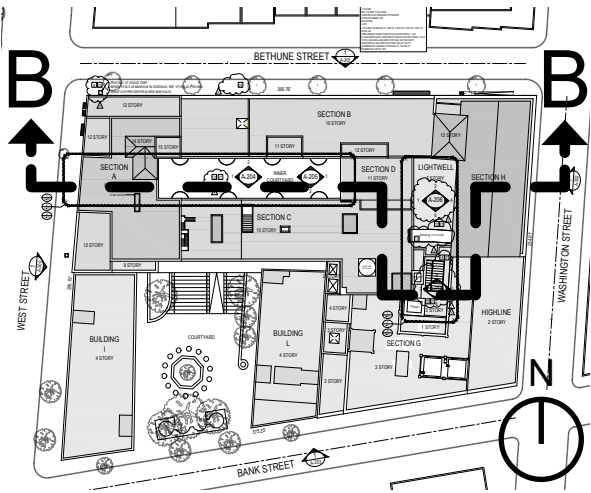
**EXISTING + PROPOSED  
LONGITUDINAL BUILDING  
SECTIONS B-B**



EXISTING LONGITUDINAL SECTION - B



PROPOSED LONGITUDINAL SECTION - B

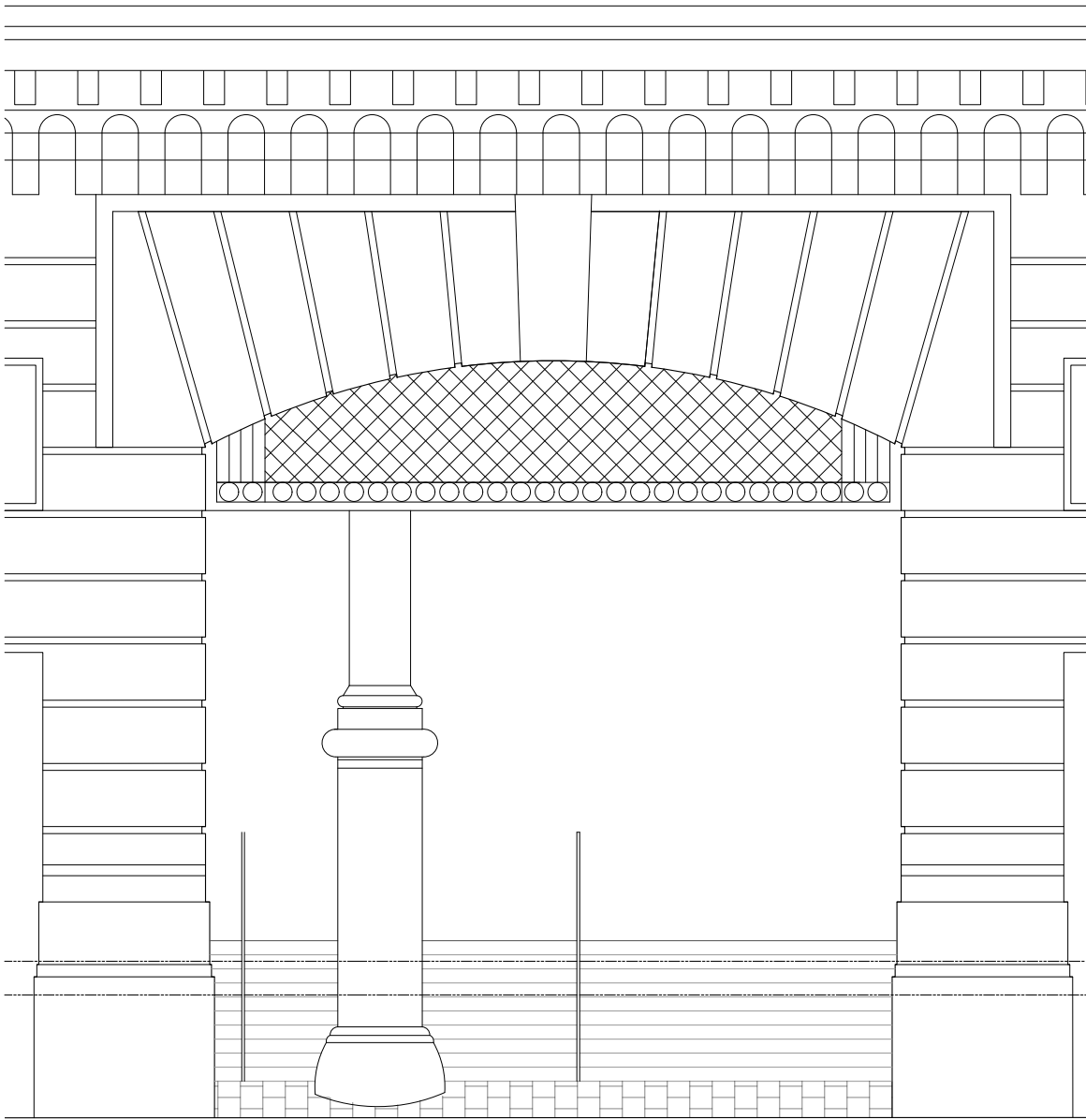


**ARCHITECT:**  
**PEREZ ARCHITECTURE**  
86 34TH STREET, SUITE D-601  
BROOKLYN, NY 11232

**PRESERVATION CONSULTANT:**

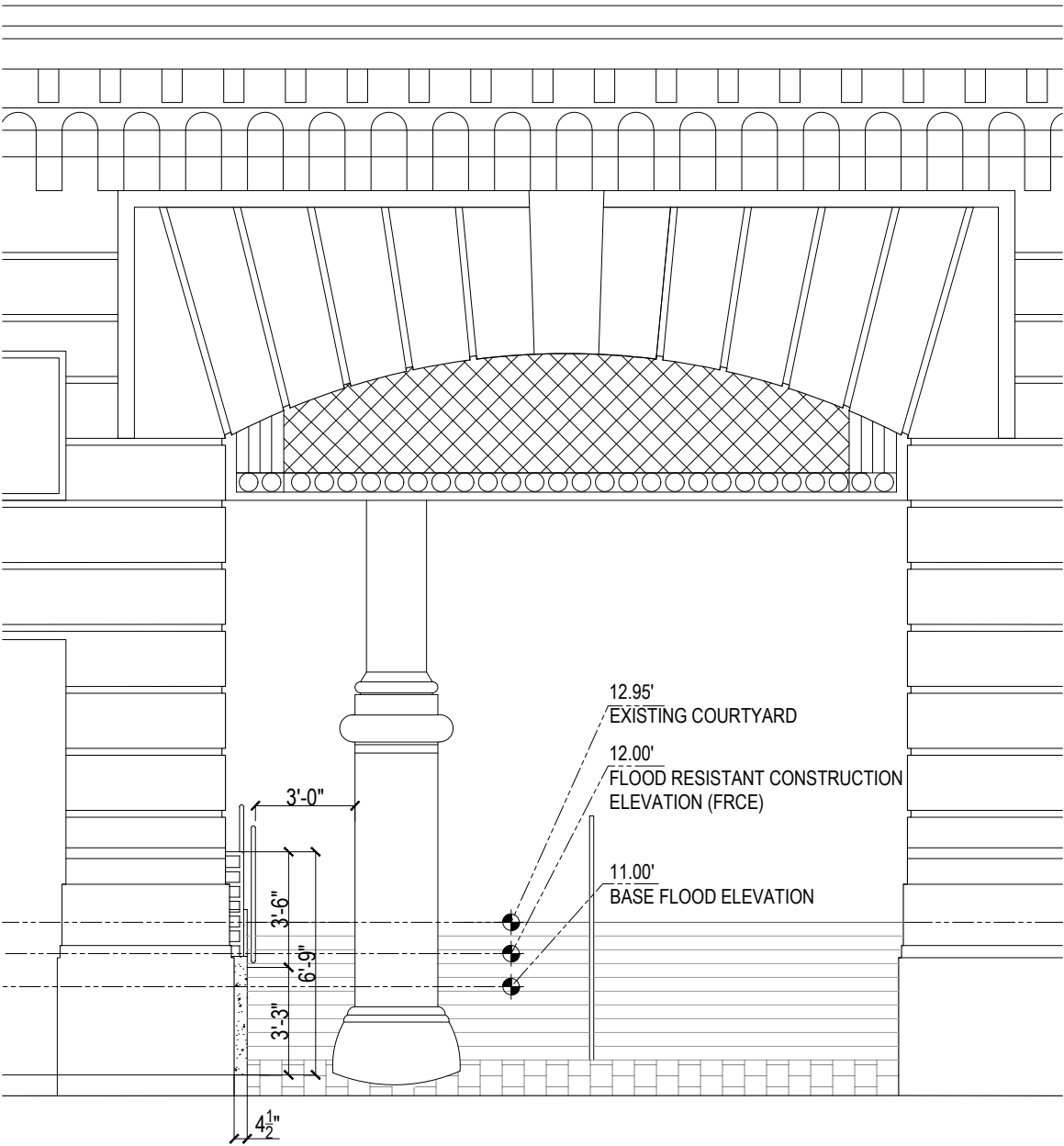
**AYON STUDIO**  
41 UNION SQUARE WEST  
SUITE 516  
NEW YORK, NY 10003

WEST STREET ENTRANCE  
EXTERIOR ELEVATIONS:



NOTE: EXISTING DECORATIVE IRON GATES NOT SHOWN FOR CLARITY

1/8 - ENLARGED ELEVATION OF EXISTING WEST STREET PASSAGEWAY ENTRANCE



NOTE: EXISTING DECORATIVE IRON GATES NOT SHOWN FOR CLARITY

2/8 - ENLARGED ELEVATION OF PROPOSED WEST STREET PASSAGEWAY ENTRANCE  
(WITH ADA RAMP)

ARCHITECT:

**PEREZ ARCHITECTURE**  
86 34TH STREET, SUITE D-601  
BROOKLYN, NY 11232

PRESERVATION CONSULTANT:

**AYON STUDIO**  
41 UNION SQUARE WEST  
SUITE 516  
NEW YORK, NY 10003



**WESTBETH ARTISTS' HOUSING**  
463 WEST STREET  
NEW YORK, NY. 10014

**EXISTING AND PROPOSED AT  
WEST STREET ENTRANCE**



1/9 - EXISTING WEST STREET ENTRANCE



2/9 - PROPOSED WEST STREET ENTRANCE WITH ADA RAMP

*ARCHITECT:*

**PEREZ ARCHITECTURE**  
86 34TH STREET, SUITE D-601  
BROOKLYN, NY 11232

*PRESERVATION CONSULTANT:*

**AYON STUDIO**  
41 UNION SQUARE WEST  
SUITE 516  
NEW YORK, NY 10003

**EXISTING AND PROPOSED  
PASSAGEWAY AT  
WEST STREET ENTRANCE**



1/10 - EXISTING PASSAGEWAY



2/10 - PROPOSED PASSAGEWAY WITH ADA RAMP

*ARCHITECT:*  
**PEREZ ARCHITECTURE**  
86 34TH STREET, SUITE D-601  
BROOKLYN, NY 11232  
  
*PRESERVATION CONSULTANT:*  
**AYON STUDIO**  
41 UNION SQUARE WEST  
SUITE 516  
NEW YORK, NY 10003





1/11 - EXISTING PASSAGEWAY VIEW FROM COURTYARD



2/11 - PROPOSED PASSAGEWAY VIEW FROM COURTYARD WITH NEW RAMP

*ARCHITECT:*

**PEREZ ARCHITECTURE**  
86 34TH STREET, SUITE D-601  
BROOKLYN, NY 11232

*PRESERVATION CONSULTANT:*

**AYON STUDIO**  
41 UNION SQUARE WEST  
SUITE 516  
NEW YORK, NY 10003



**WESTBETH ARTISTS' HOUSING**  
463 WEST STREET  
NEW YORK, NY. 10014

**EXISTING COURTYARD**  
[SECTIONS A, B, C + D]



**CLOSE UP VIEW OF EXISTING**  
**ASPHALT PAVERS**



**ARCHITECT:**

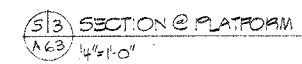
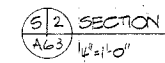
**PEREZ ARCHITECTURE**  
86 34TH STREET, SUITE D-601  
BROOKLYN, NY 11232

**PRESERVATION CONSULTANT:**

**AYON STUDIO**  
41 UNION SQUARE WEST  
SUITE 516  
NEW YORK, NY 10003



**ENLARGED MEIER REFERENCE A63**  
**[SECTIONS A, B, C + D]**



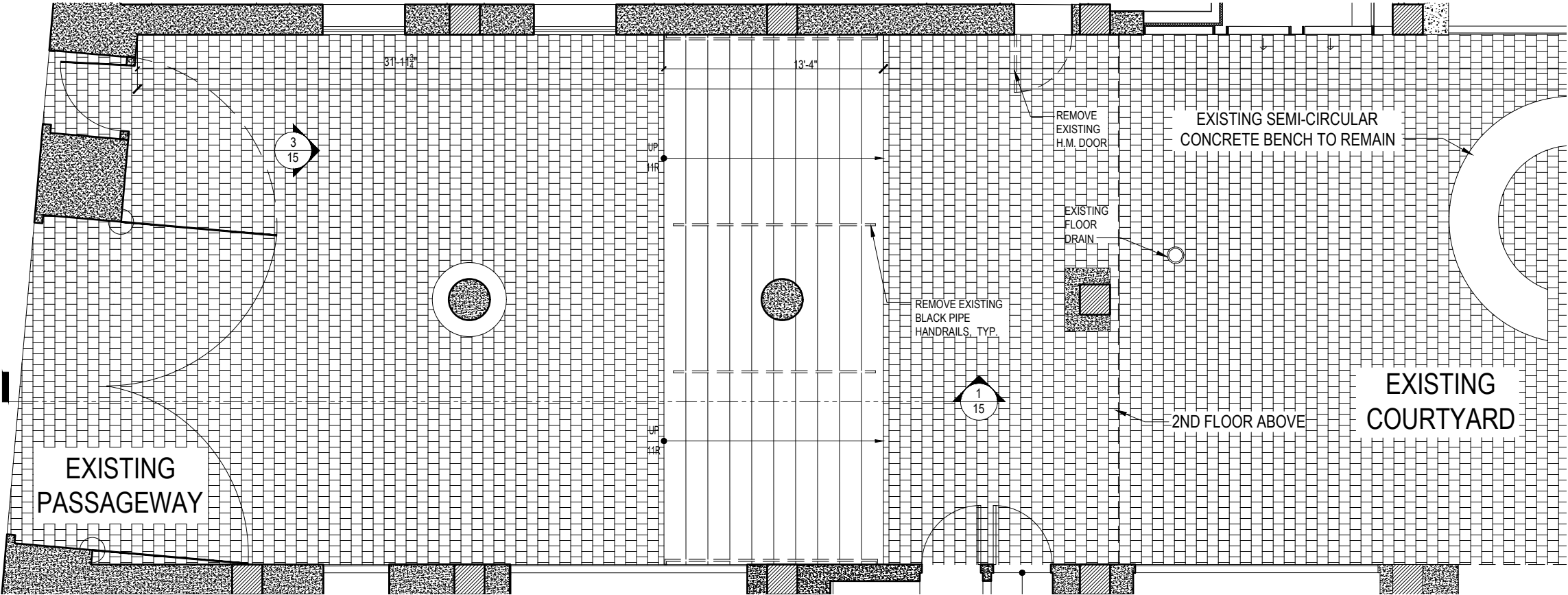
**PEREZ ARCHITECTURE**  
86 34TH STREET, SUITE D-601  
BROOKLYN, NY 11232

**AYON STUDIO**  
41 UNION SQUARE WEST  
SUITE 516  
NEW YORK, NY 10003

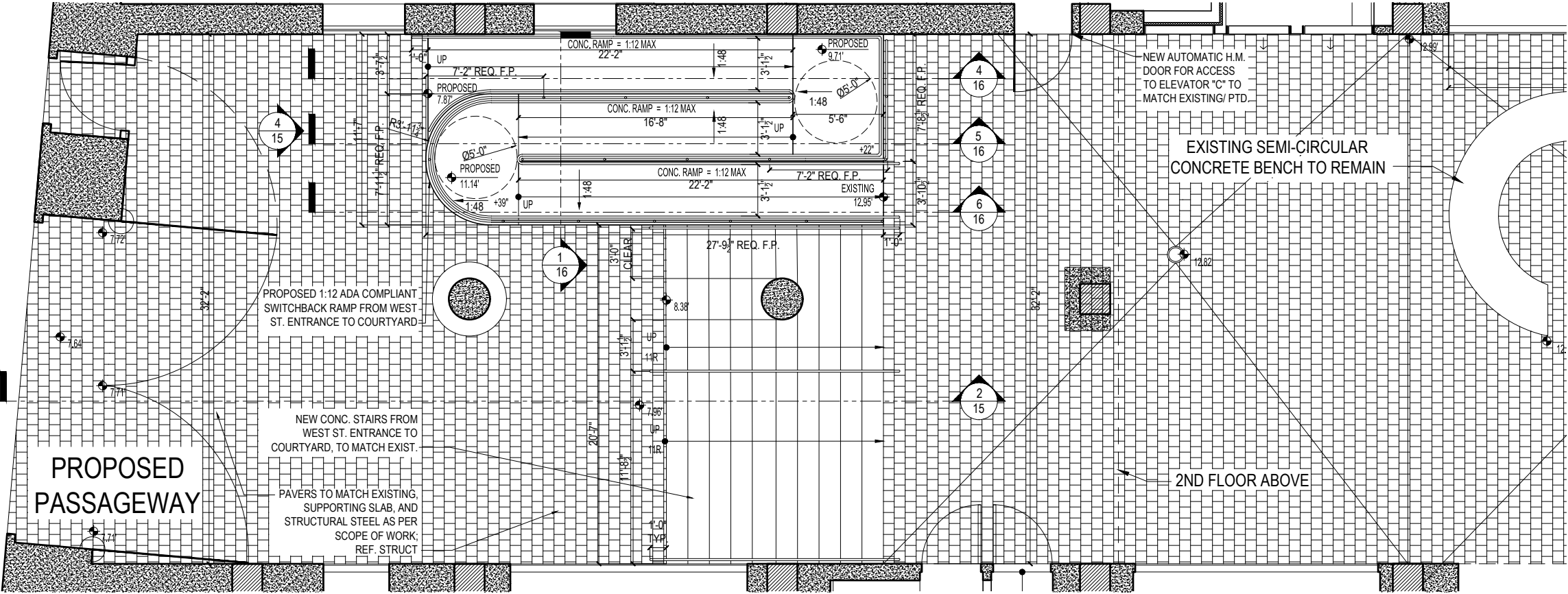
**WESTBETH ARTISTS' HOUSING**  
463 WEST STREET  
NEW YORK, NY. 10014

**WEST STREET PASSAGEWAY PLANS**

SCOPE: PROVIDE ADA CONCRETE RAMP  
AT WEST STREET PASSAGEWAY ENTRANCE  
FROM BOTTOM OF CONCRETE STAIR UP TO  
EXISTING COURTYARD.



1/12 - EXISTING PLAN OF WEST STREET PASSAGEWAY



2/12 - PROPOSED PLAN OF WEST STREET PASSAGEWAY

**ARCHITECT:**  
**PEREZ ARCHITECTURE**  
86 34TH STREET, SUITE D-601  
BROOKLYN, NY 11232

**PRESERVATION CONSULTANT:**

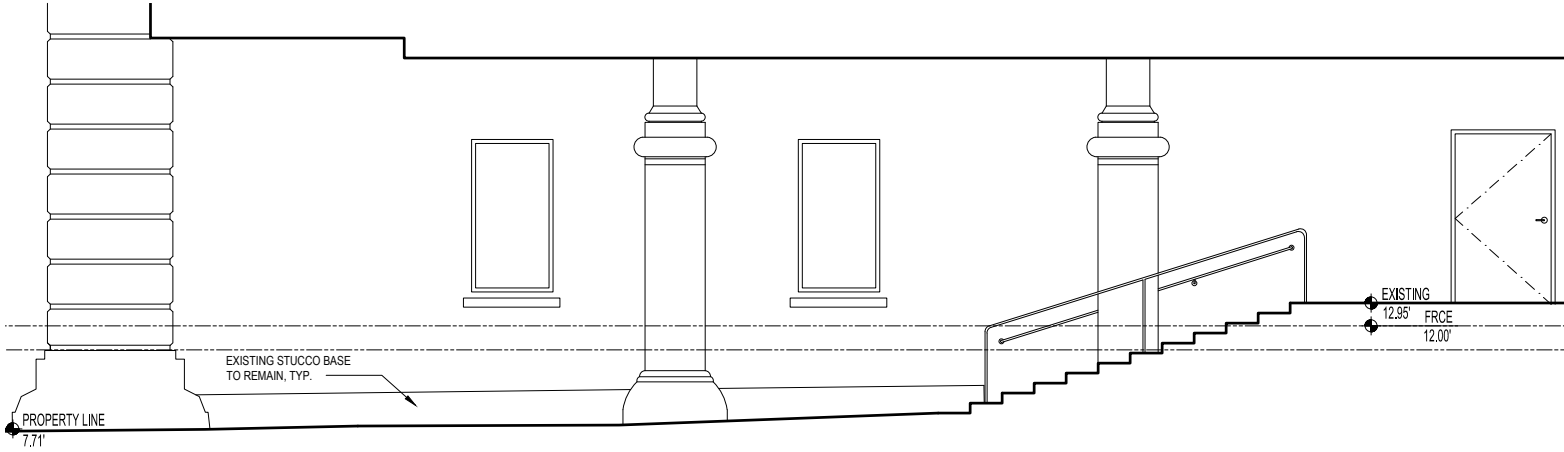
**AYON STUDIO**  
41 UNION SQUARE WEST  
SUITE 516  
NEW YORK, NY 10003



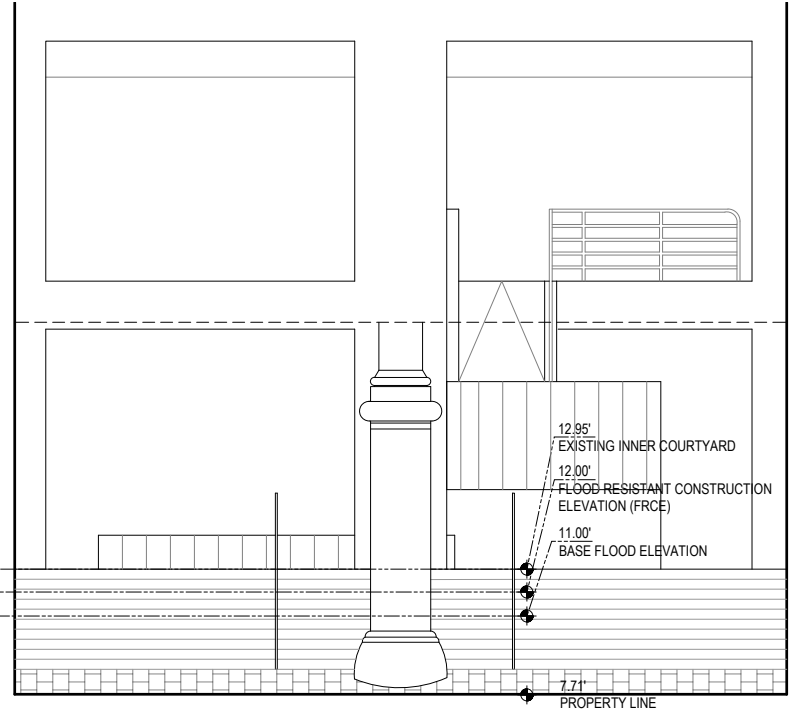
**WESTBETH ARTISTS' HOUSING**  
463 WEST STREET  
NEW YORK, NY. 10014

**WEST STREET PASSAGEWAY  
SECTIONS AND ELEVATIONS**

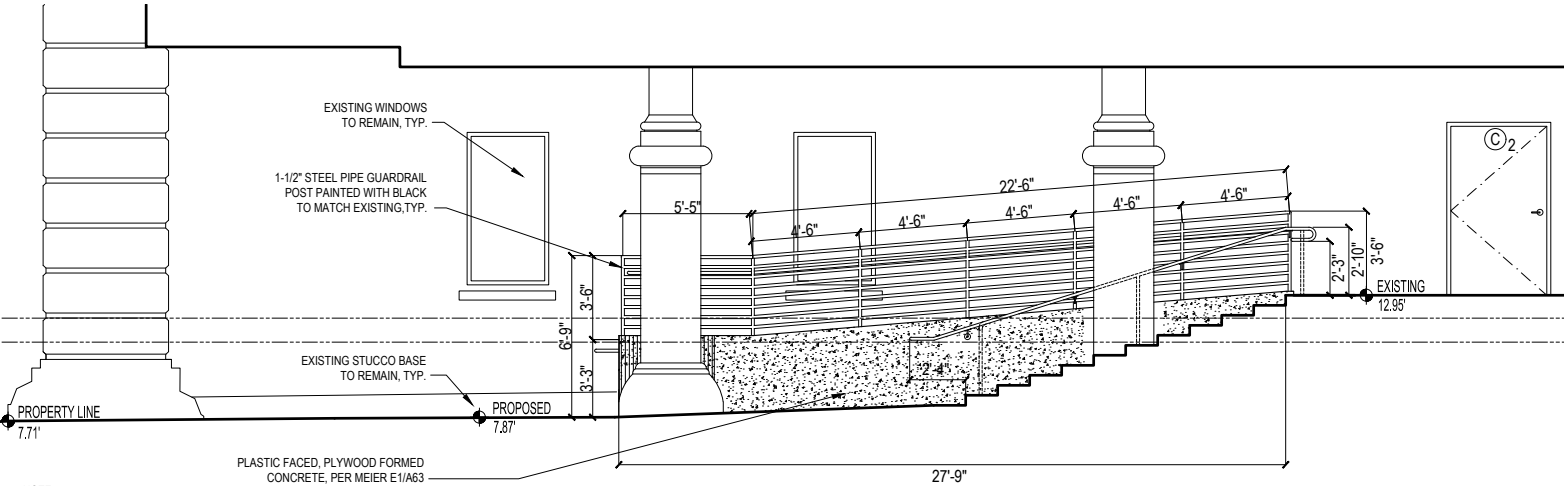
SCOPE: PROVIDE ADA CONCRETE RAMP  
AT WEST STREET PASSAGEWAY ENTRANCE  
FROM BOTTOM OF CONCRETE STAIR UP TO  
EXISTING COURTYARD.



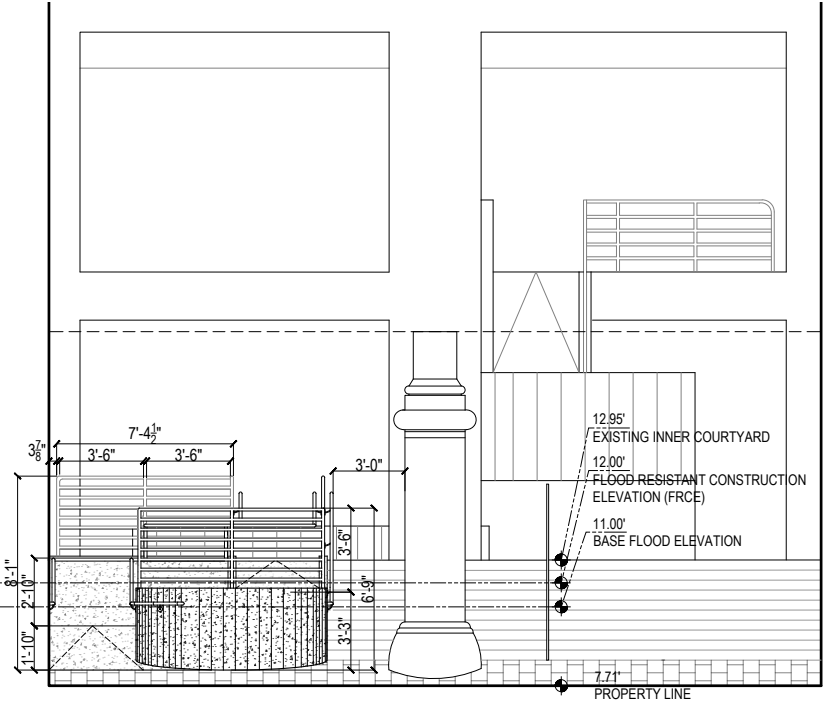
1 - EXISTING NORTH ELEVATION - WEST STREET COURTYARD ENTRY



3 - EXISTING EAST ELEVATION  
WEST STREET COURTYARD ENTRY



2 - PROPOSED NORTH ELEVATION - WEST STREET COURTYARD ENTRY - WITH ADA RAMP



4 - PROPOSED EAST ELEVATION  
WEST STREET COURTYARD ENTRY - WITH ADA RAMP

**ARCHITECT:**

**PEREZ ARCHITECTURE**  
86 34TH STREET, SUITE D-601  
BROOKLYN, NY 11232

**PRESERVATION CONSULTANT:**

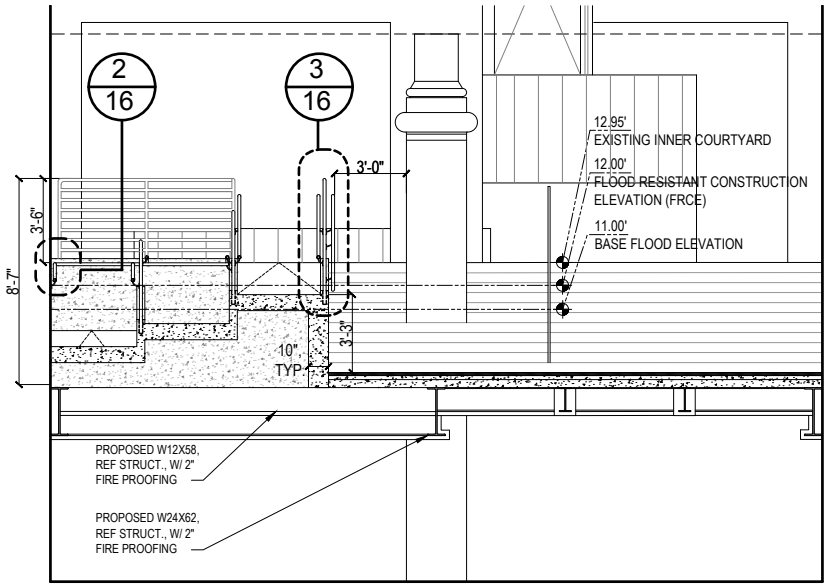
**AYON STUDIO**  
41 UNION SQUARE WEST  
SUITE 516  
NEW YORK, NY 10003

**WESTBETH ARTISTS' HOUSING**  
463 WEST STREET  
NEW YORK, NY. 10014

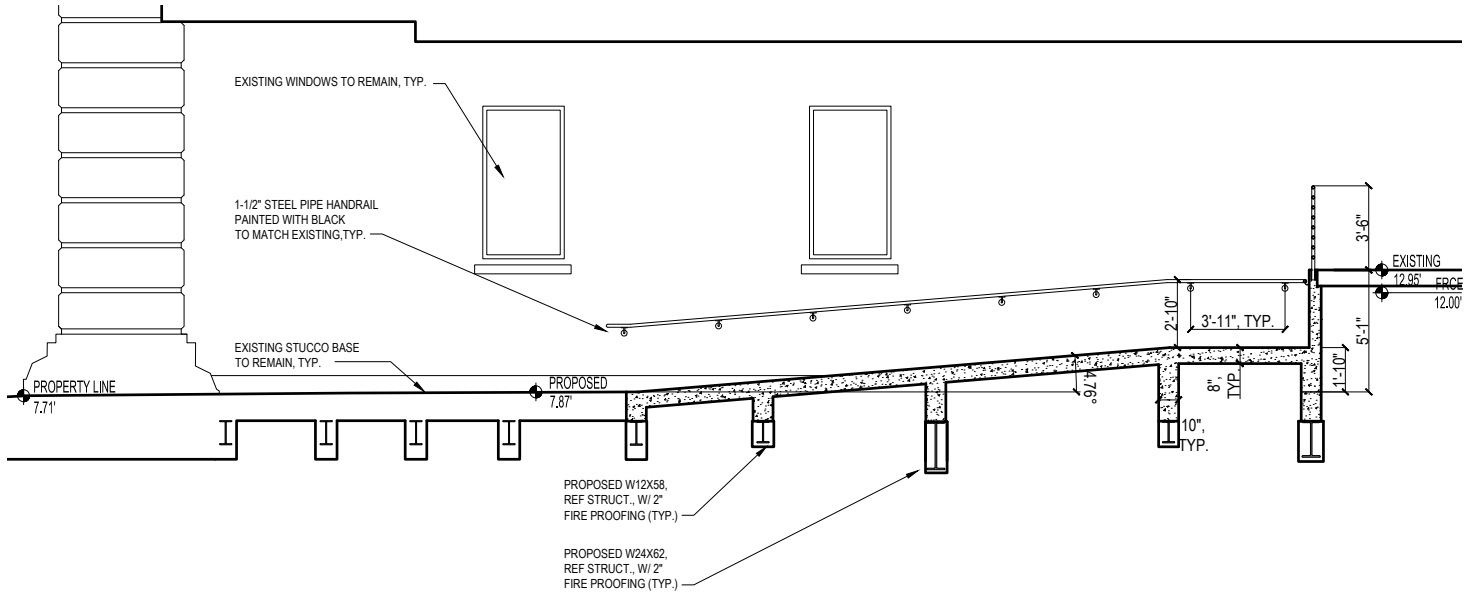
**PROPOSED RAMP SECTIONS  
AND DETAIL**

SCOPE: PROVIDE ADA CONCRETE RAMP  
AT WEST STREET PASSAGEWAY ENTRANCE  
FROM BOTTOM OF CONCRETE STAIR UP TO  
EXISTING COURTYARD.

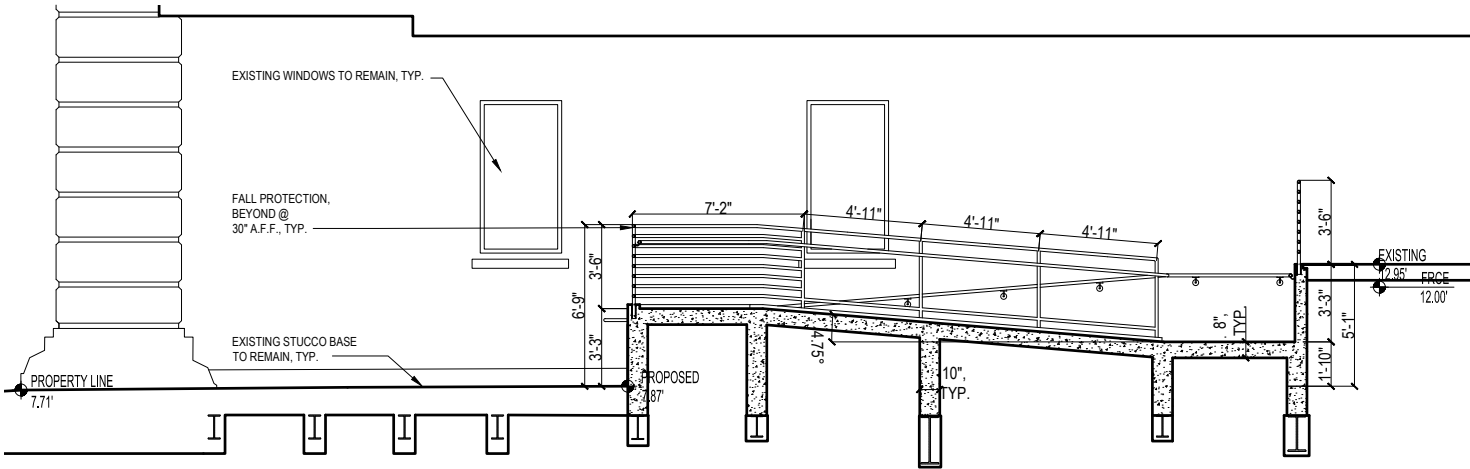
NEW REINFORCED CONCRETE RAMP  
MATERIAL TO MATCH EXISTING CONCRETE  
STAIRS. PROVIDE SECTION 504 UNITED  
FEDERAL ACCESSIBLY STANDARDS  
COMPLIANT HANDRAILS AND FALL  
PROTECTION.



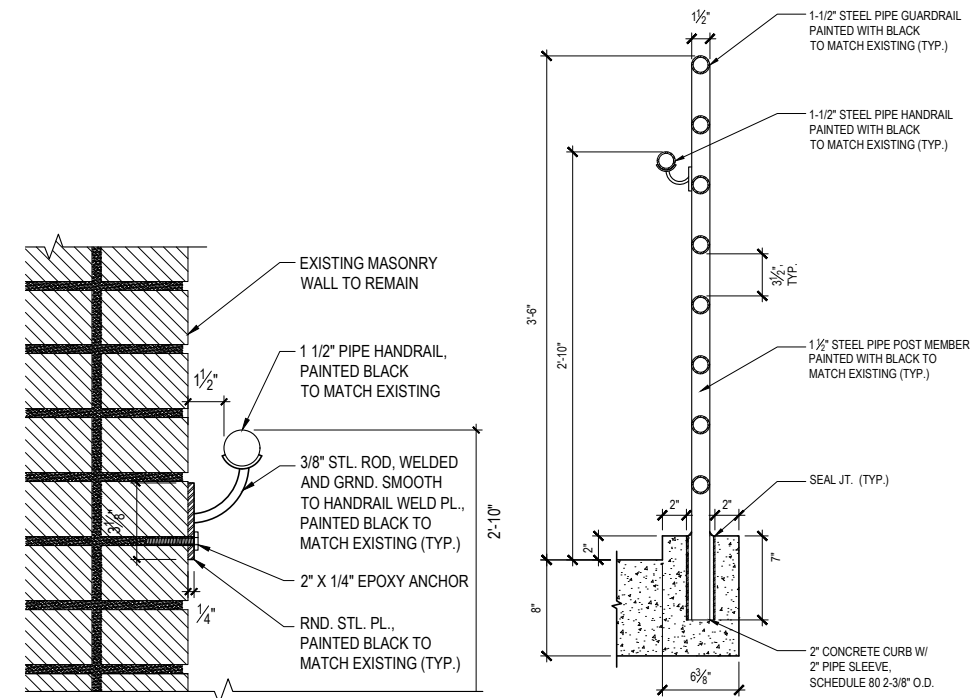
1 - TRANSVERSE SECTION



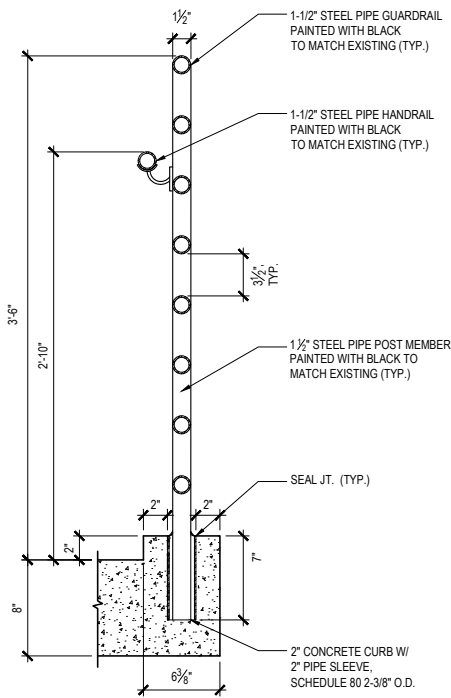
4 - LONGITUDINAL SECTION DETAIL 1:12 RAMP



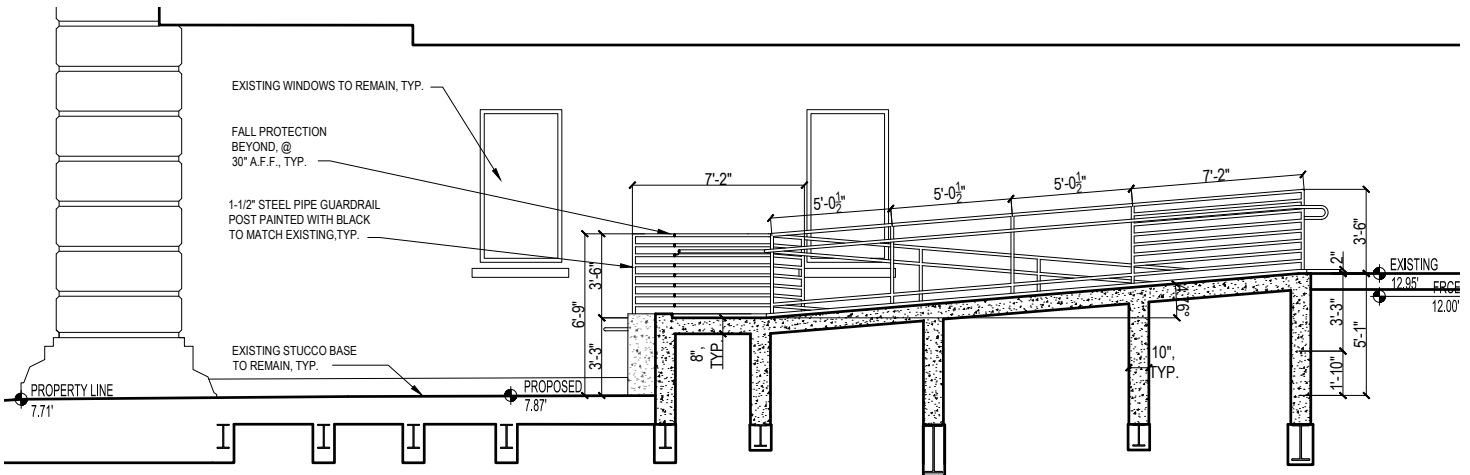
5 - LONGITUDINAL SECTION DETAIL 1:12 RAMP



2 - DETAIL - HANDRAIL



3 - DETAIL - FALL PROTECTION  
AND HANDRAIL



6 - LONGITUDINAL SECTION DETAIL 1:12 RAMP

*ARCHITECT:*

**PEREZ ARCHITECTURE**  
86 34TH STREET, SUITE D-601  
BROOKLYN, NY 11232

*PRESERVATION CONSULTANT:*

**AYON STUDIO**  
41 UNION SQUARE WEST  
SUITE 516  
NEW YORK, NY 10003