



1940 TAX PHOTO

**623 Broadway (West side between West Houston Street and Bleecker Street)  
aka 190 Mercer Street**

**Borough of Manhattan Tax Map Block 523, lot 47**

**Date of construction: 1881-82**

**Architect: John B. Snook**

**Original Owner: Thomas Lewis**

**Type: Warehouse**

**Style: Renaissance Revival**

**Stories: 5**

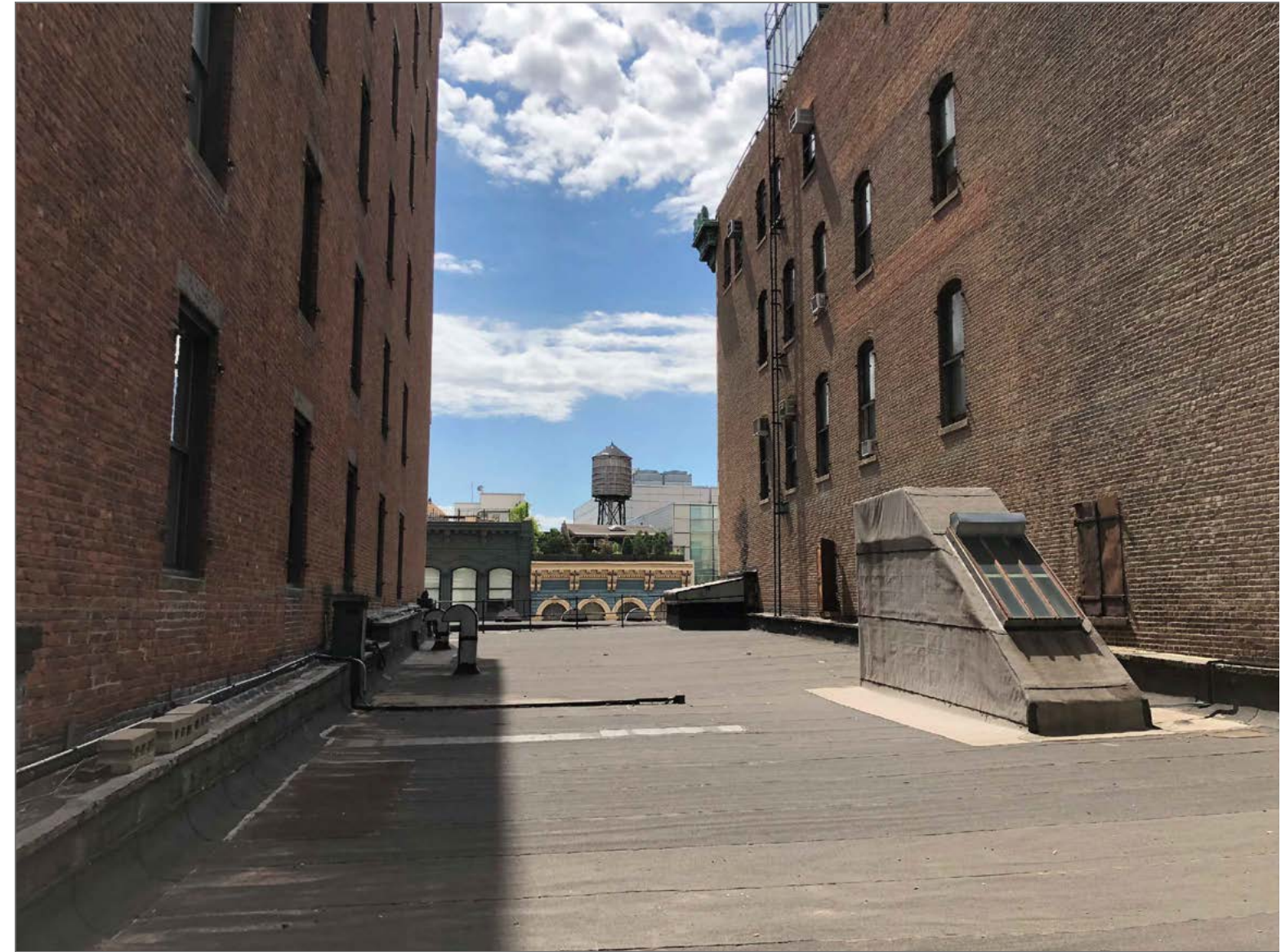
**Structure/material: Broadway: cast iron; Mercer Street: brick.**

**Features:** Broadway: Four bays; rusticated cast-iron piers; non-historic storefront, entryway to upper floors, two non-historic flagpoles, and signage; bracketed cast-iron cornice with urns over storefront; upper stories have Doric columns and curved window lintels; non-historic sash; elaborate galvanized-iron roof cornice with molded panels, foliate and scrolled brackets, modillions, and surmounting circular decoration. Mercer Street: Four bays; panelled cast-iron columns at ground level; non-historic storefront infill; graystone lintels; historic wood sash, some modified for vents; galvanized-iron roof cornice supported by brick corbels.

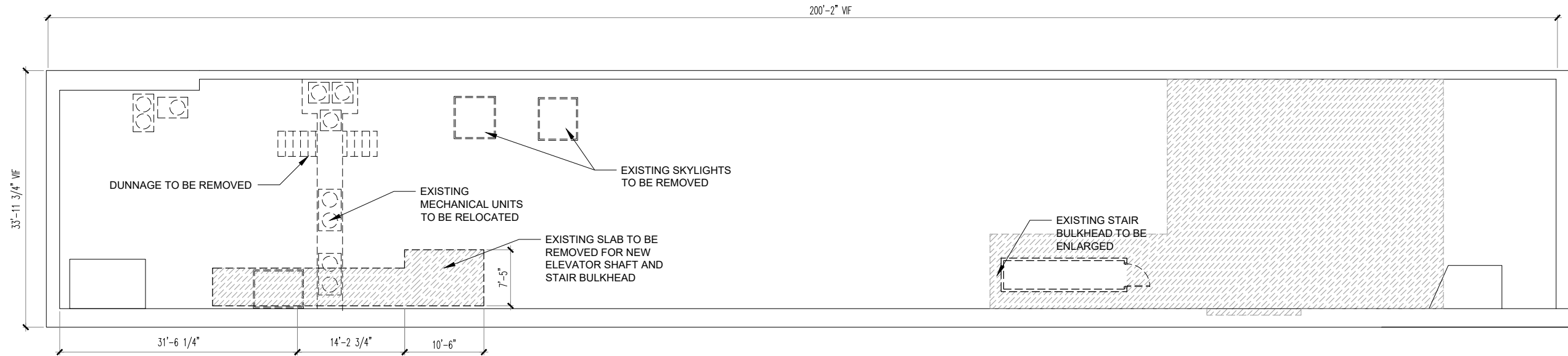
**History:** Listed as a warehouse in the new building application filed with the Department of Buildings, this cast-iron building was designed by John B. Snook and constructed in 1881-82 for Thomas Lewis at a time when this section of Broadway was becoming increasingly commercial in character. Later it was occupied by small manufacturing firms. It was the scene of a tragic fire in 1958, which killed twenty-four workers at the textile printing plant and underwear factory that occupied the building at the time. It was converted to office space on the upper floors c.1990 and to a health club in 1998.



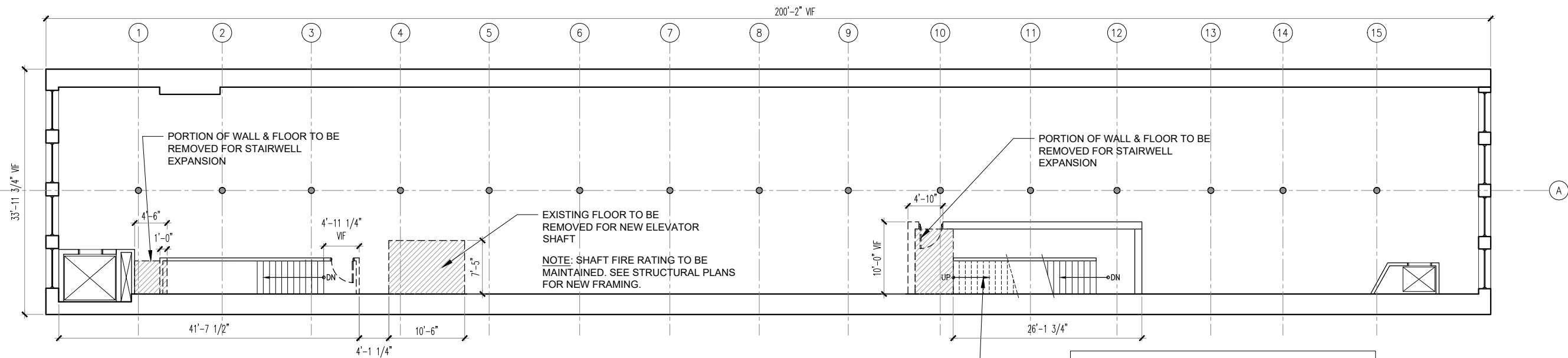
**LOOKING WEST TOWARD MERCER STREET**



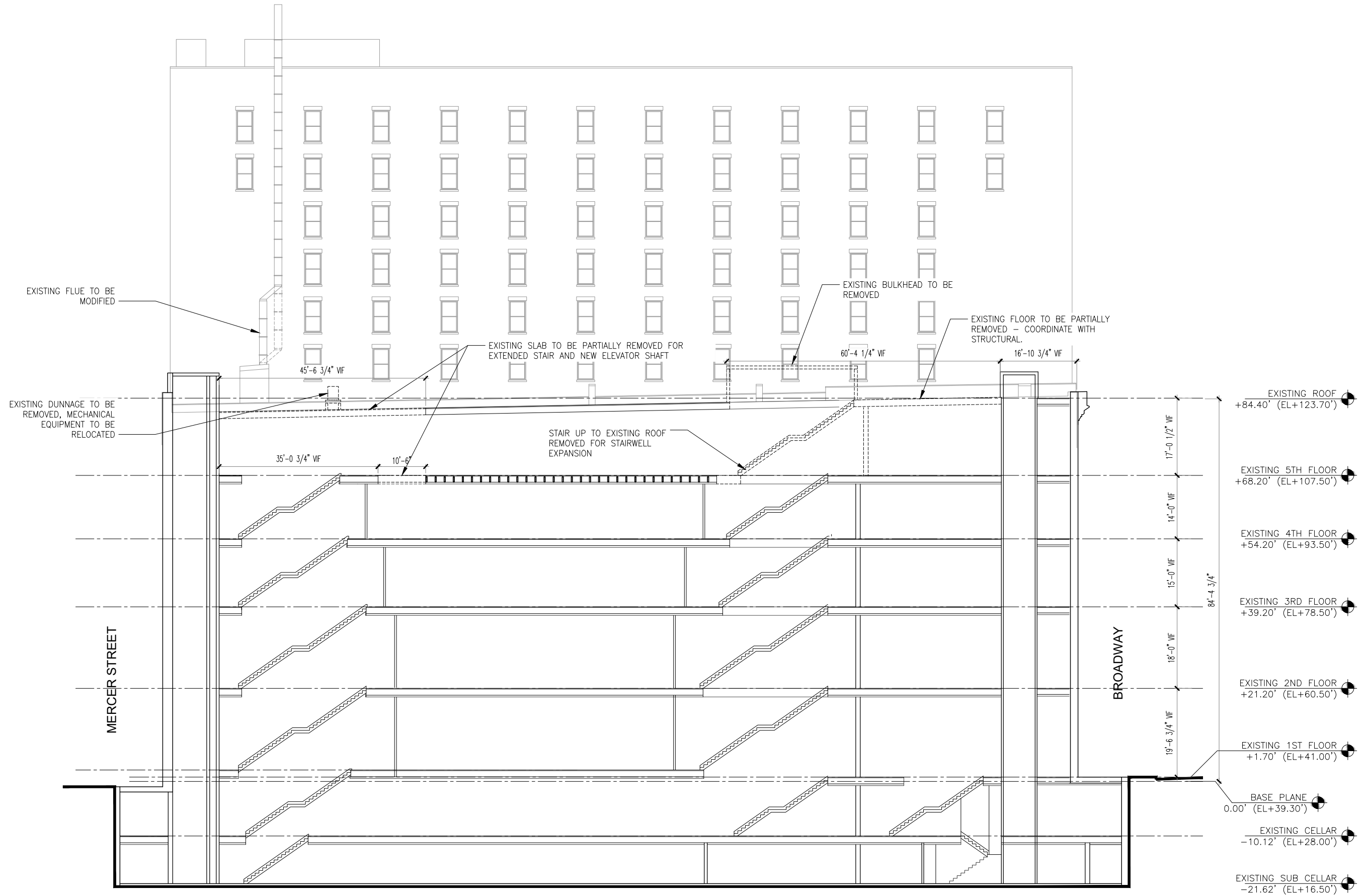
**LOOKING EAST TOWARD BROADWAY**



01 ROOF DEMOLITION PLAN  
1/8" = 1'-0"



02 5TH FLOOR DEMOLITION PLAN  
1/8" = 1'-0"

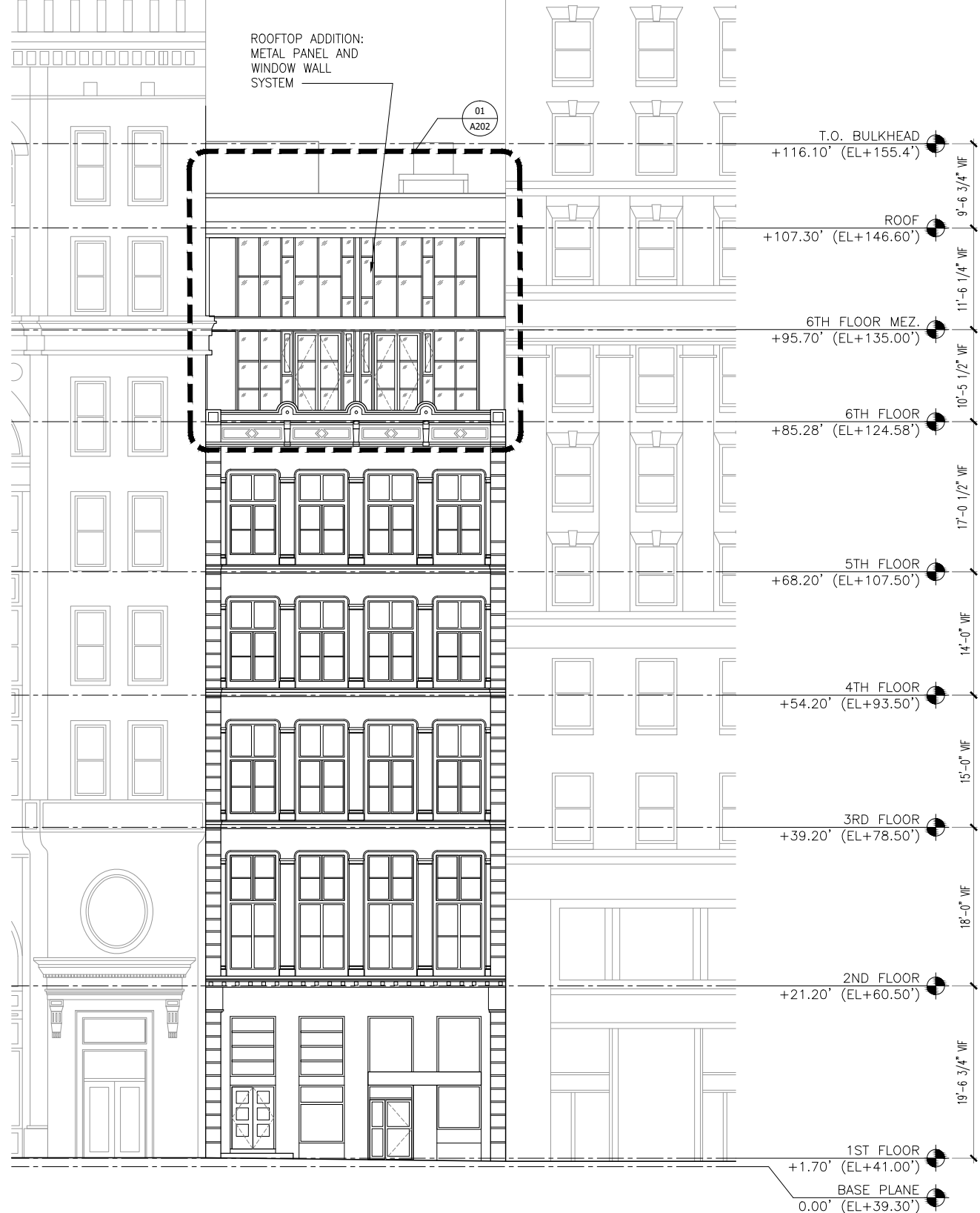




**ELEVATION ON BROADWAY**



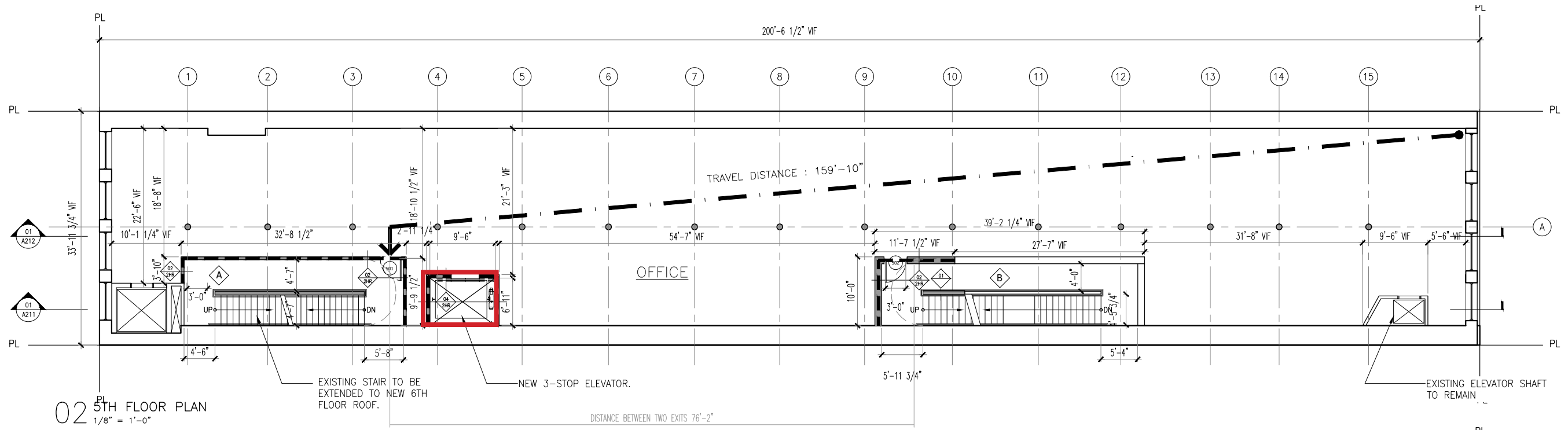
**ELEVATION ON MERCER STREET**



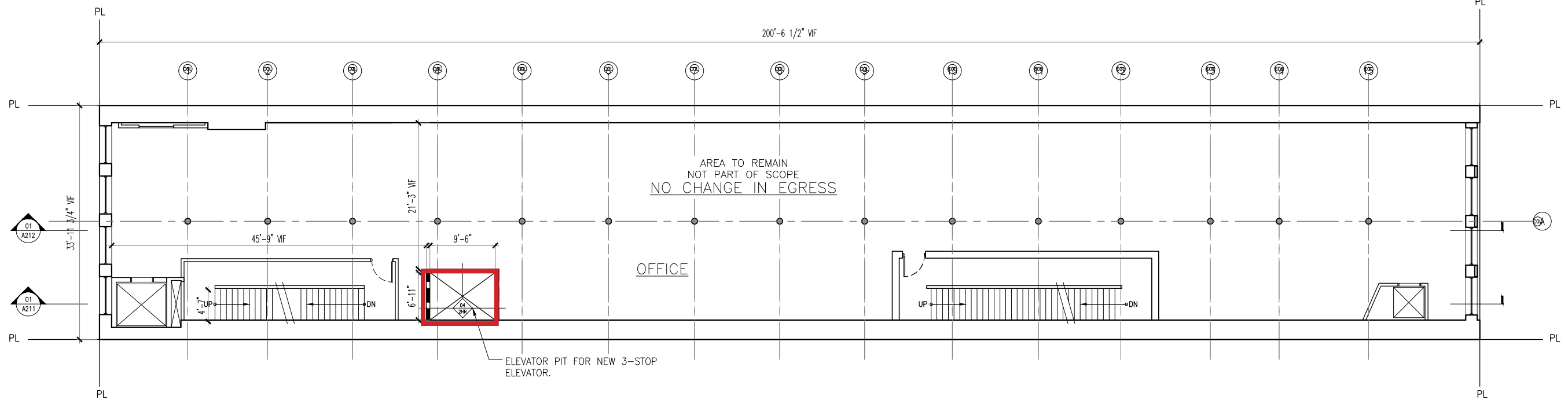
**ELEVATION ON BROADWAY**



**ELEVATION ON MERCER STREET**

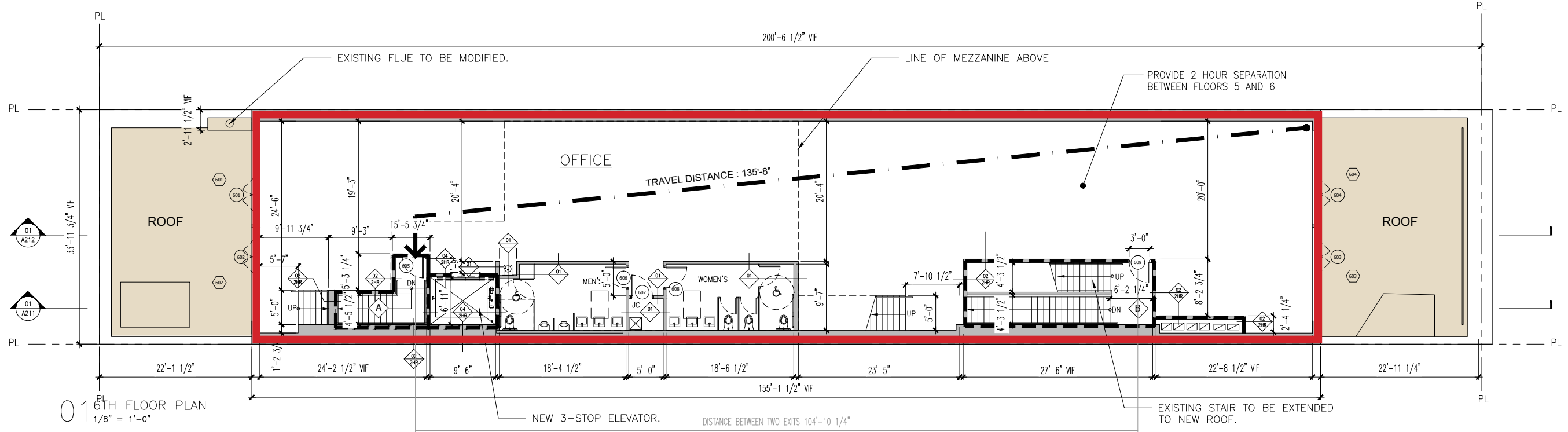
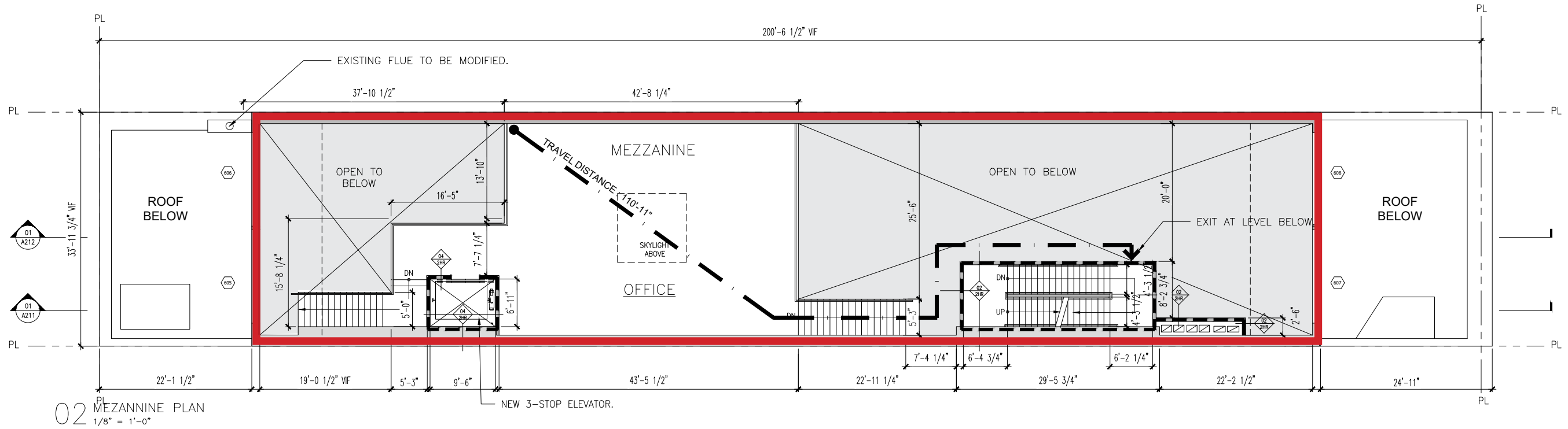


02 5TH FLOOR PLAN  
1/8" = 1'-0"



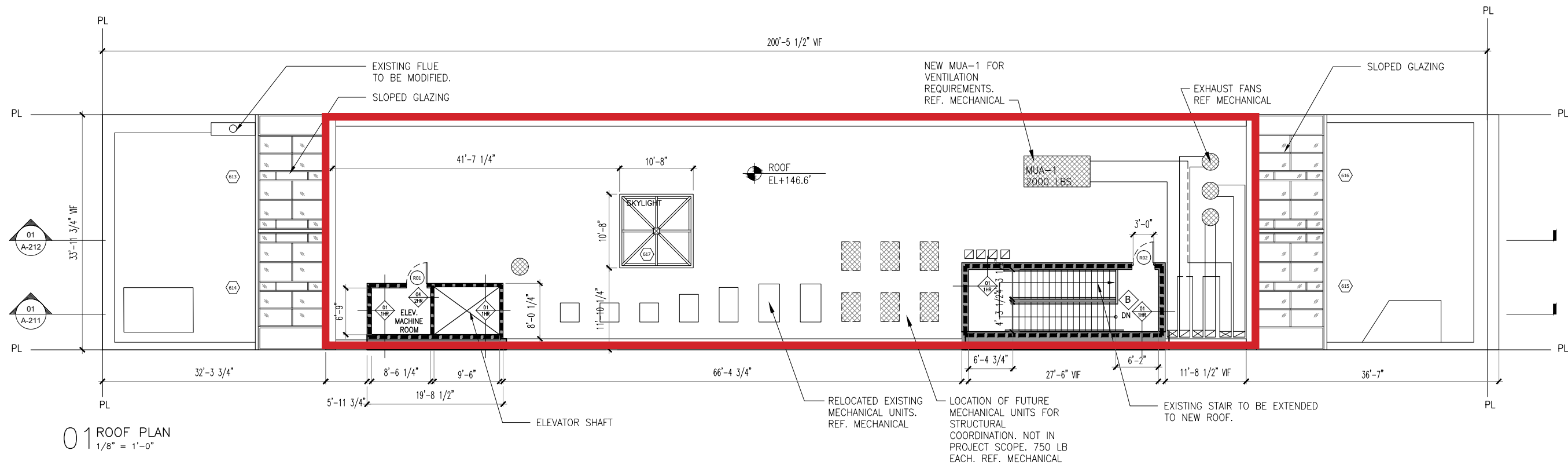
01 4TH FLOOR PLAN  
1/8" = 1'-0"



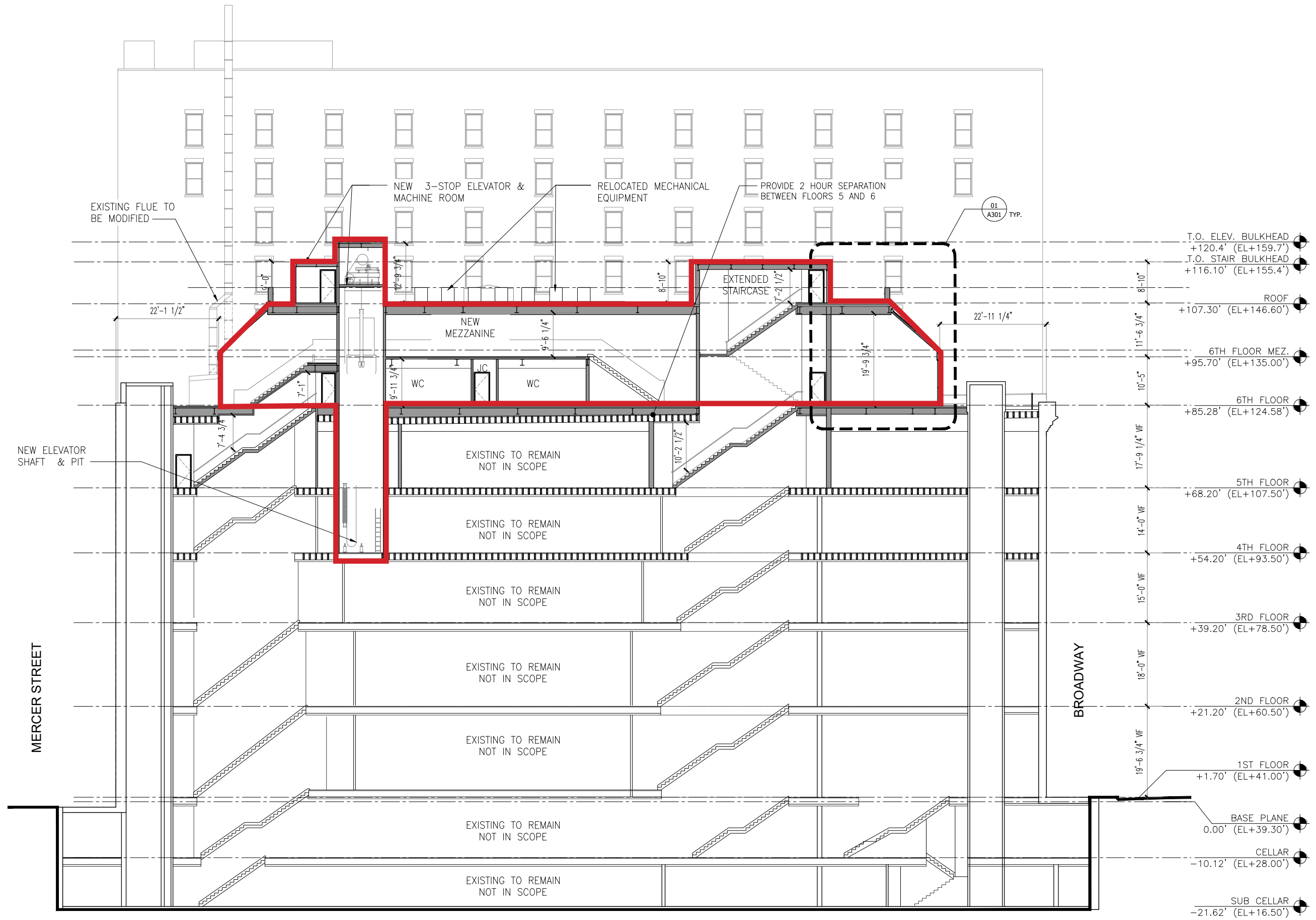




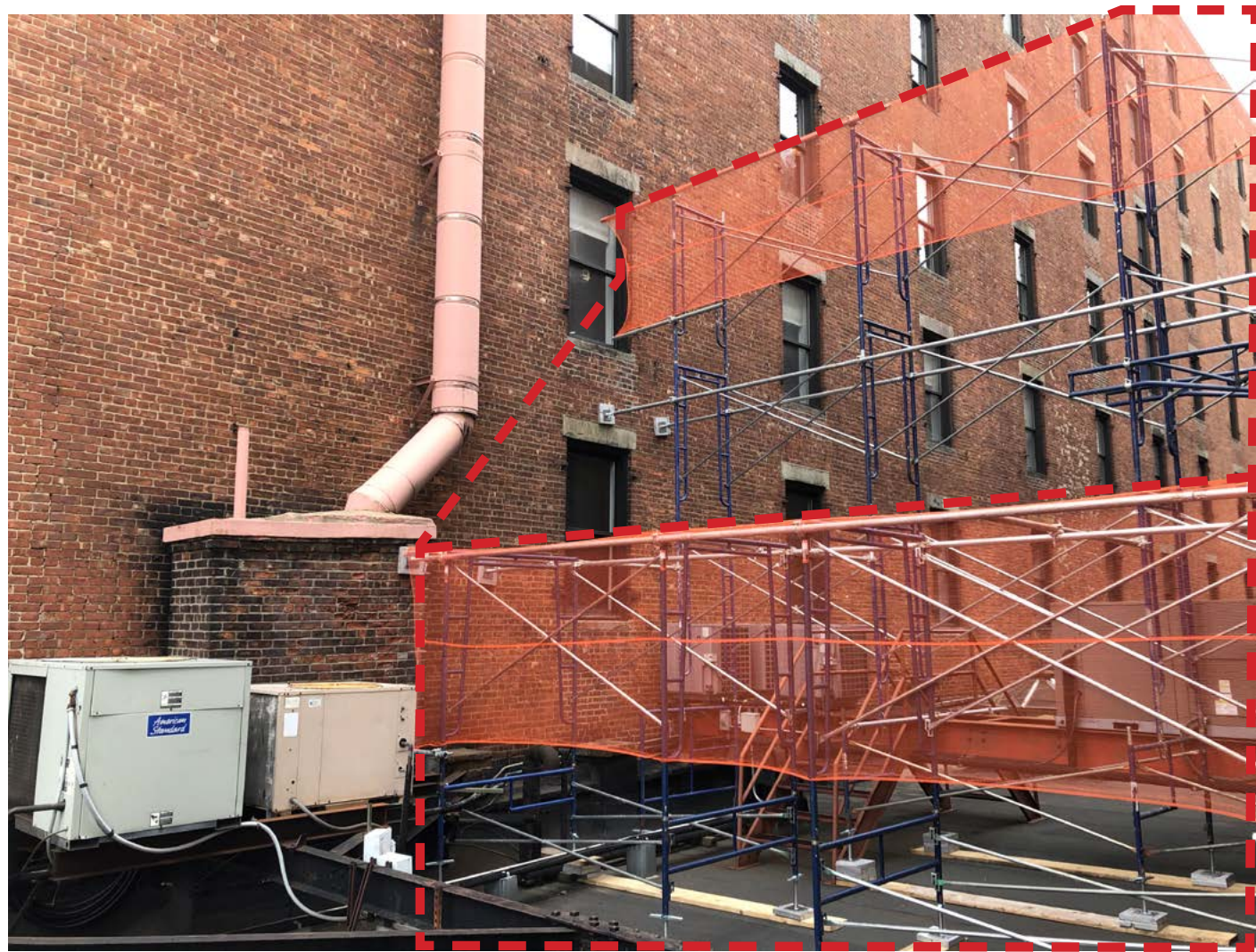
02 ROOF BULKHEAD PLAN  
1/8" = 1'-0"

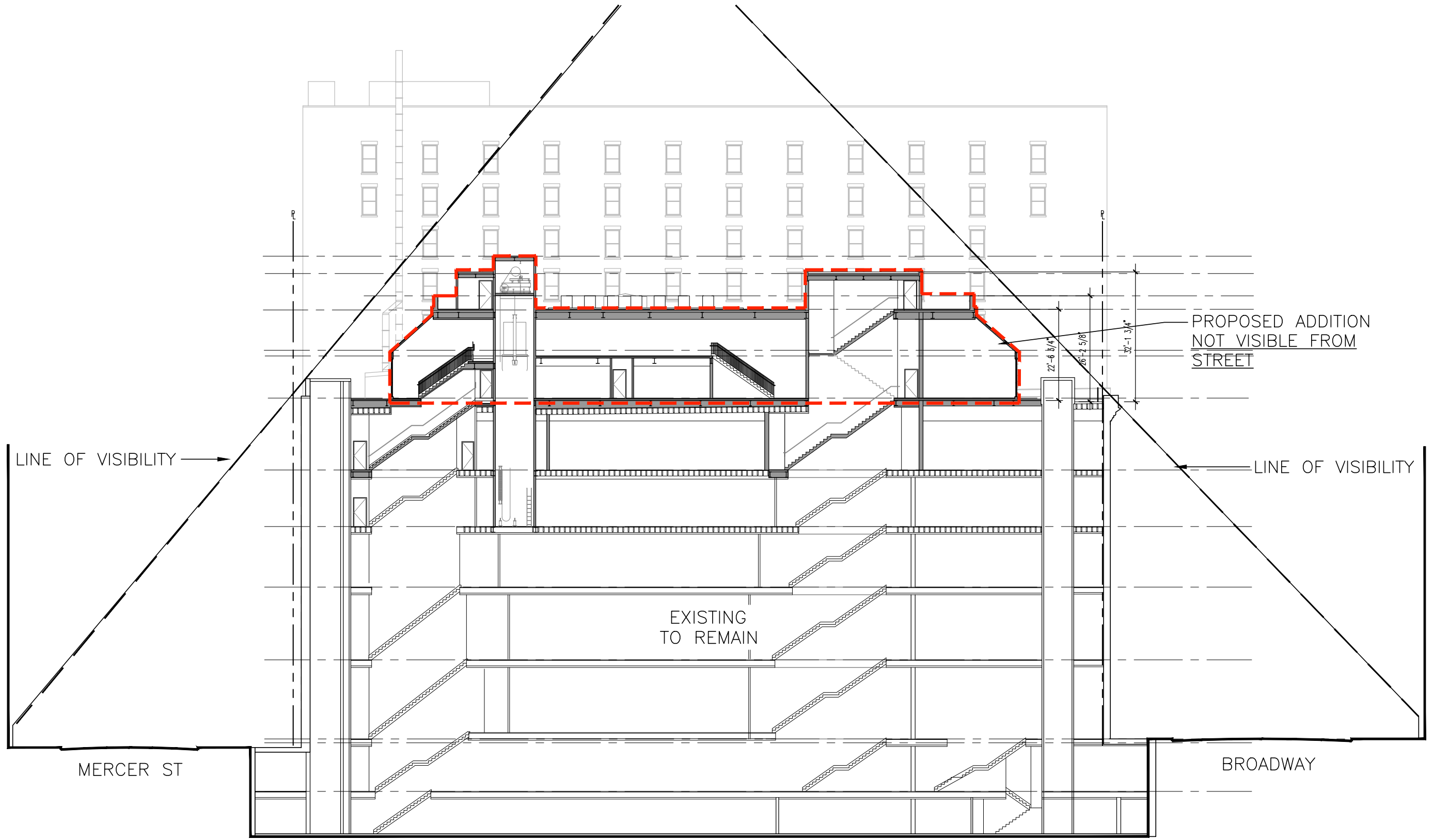


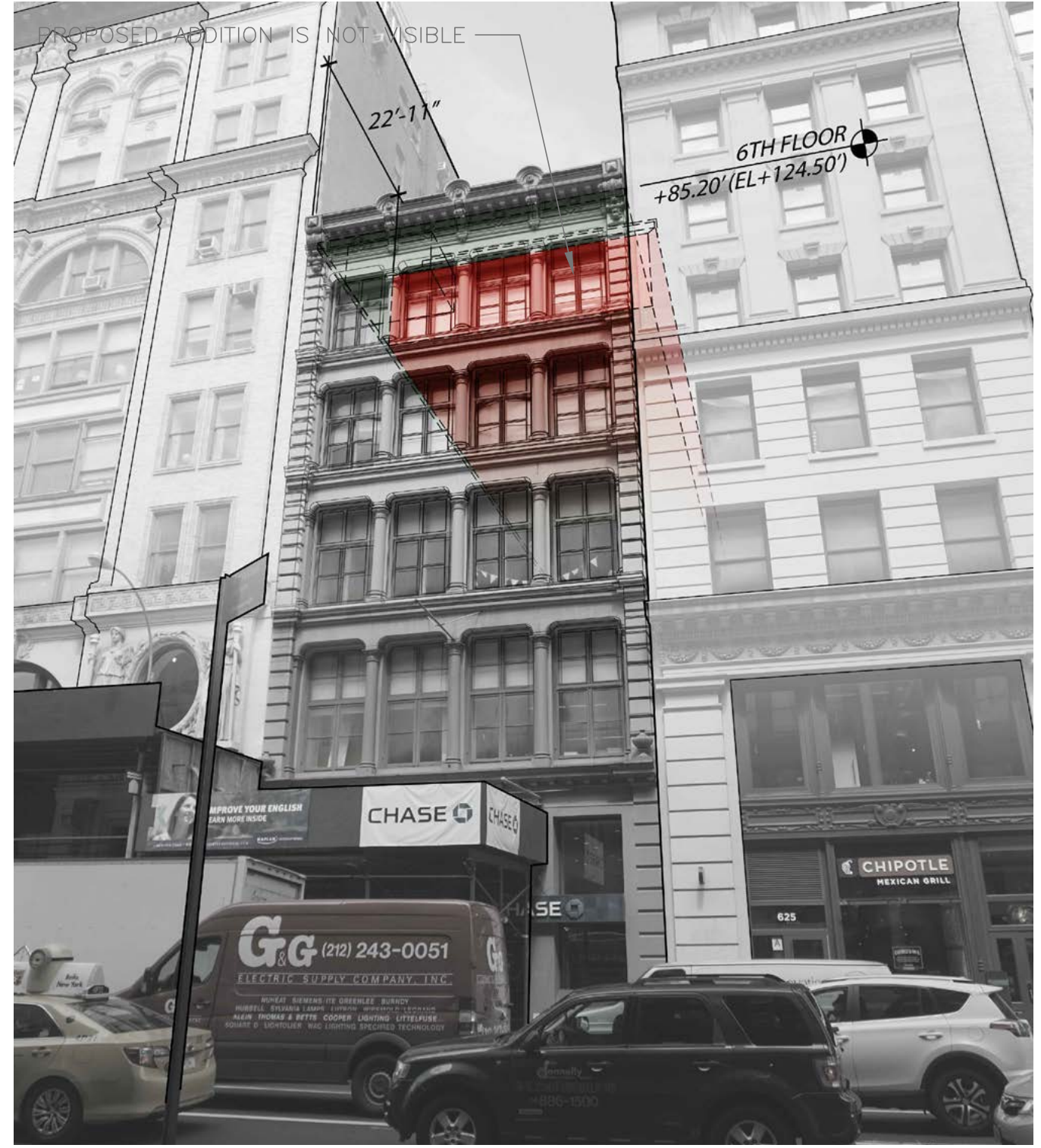
01 ROOF PLAN  
1/8" = 1'-0"











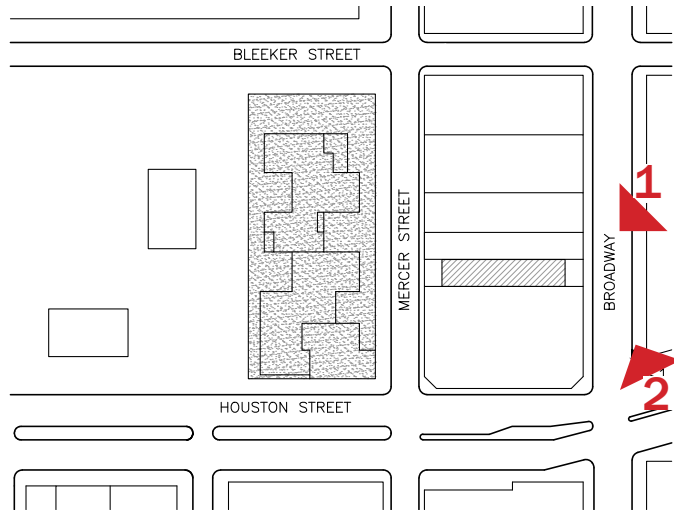








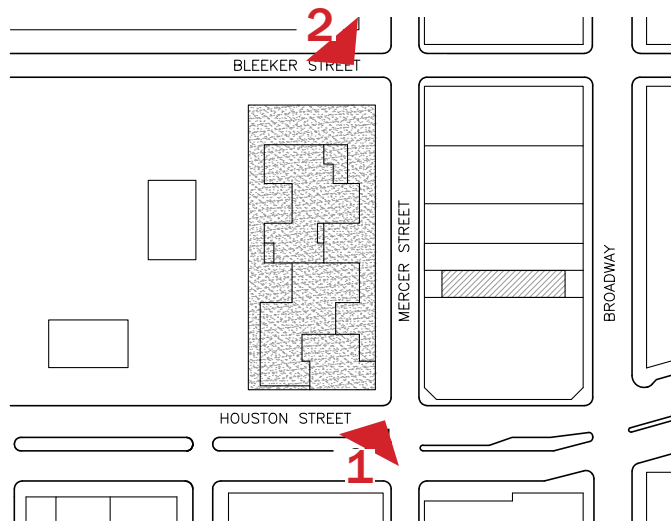




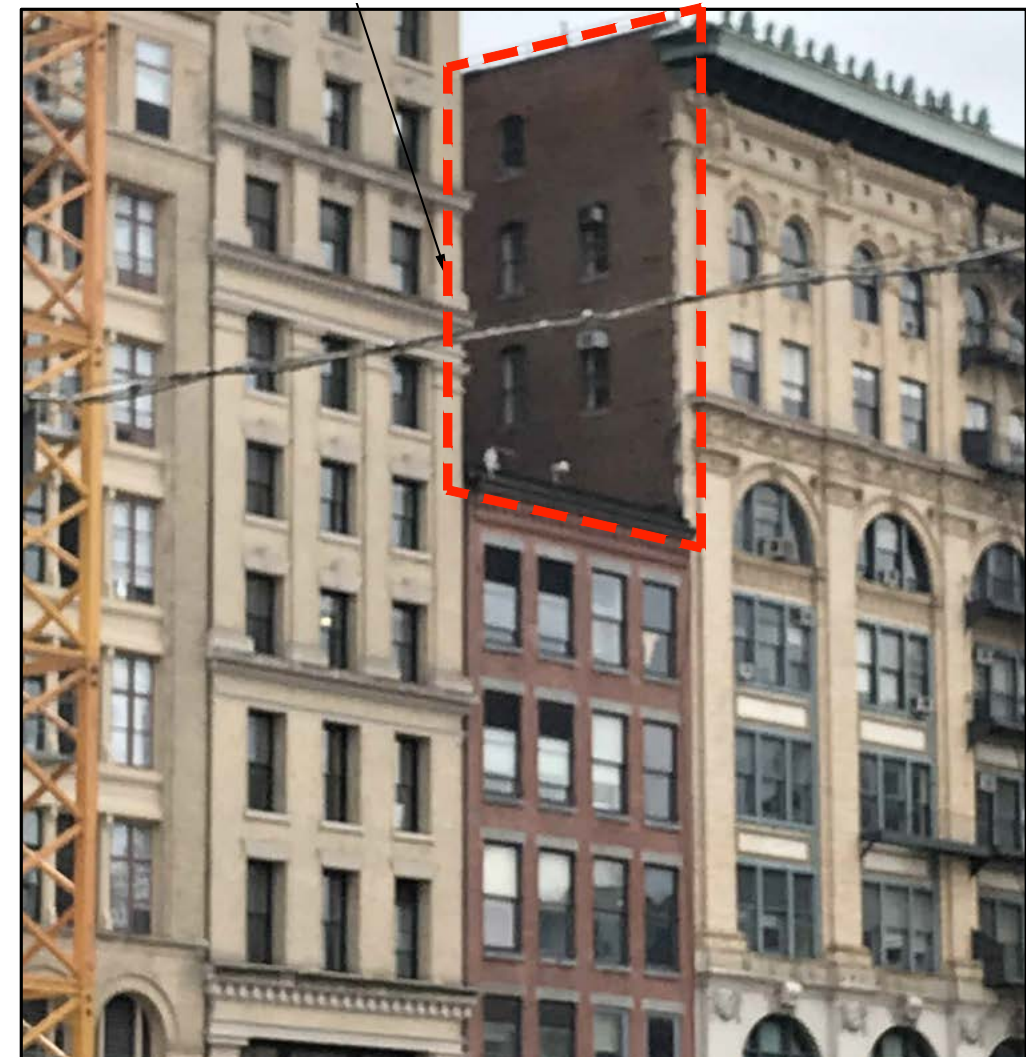
VIEW 1

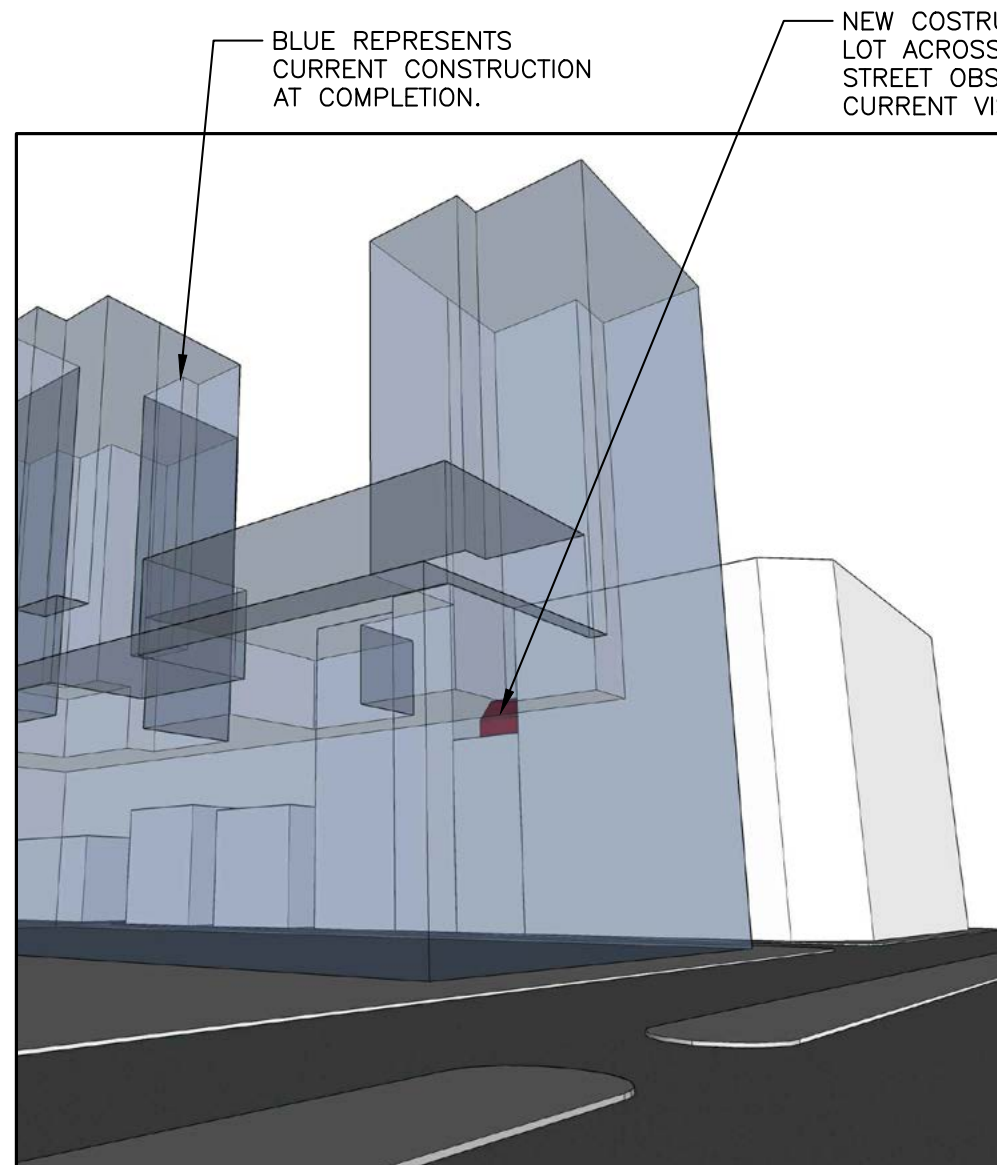
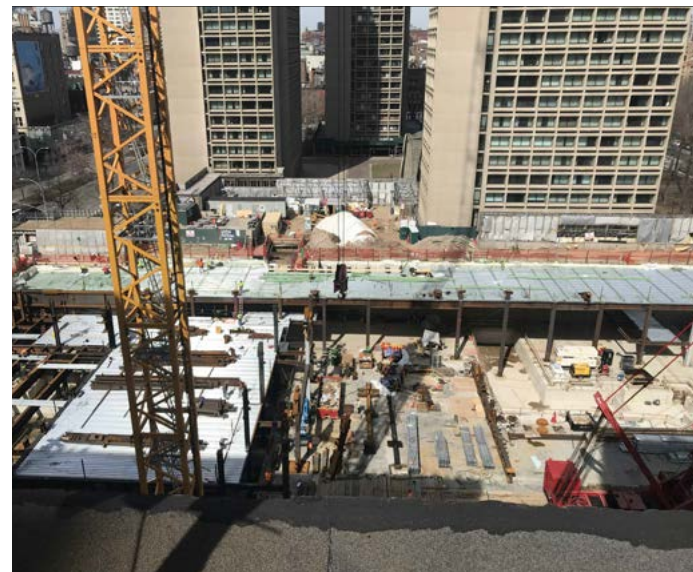
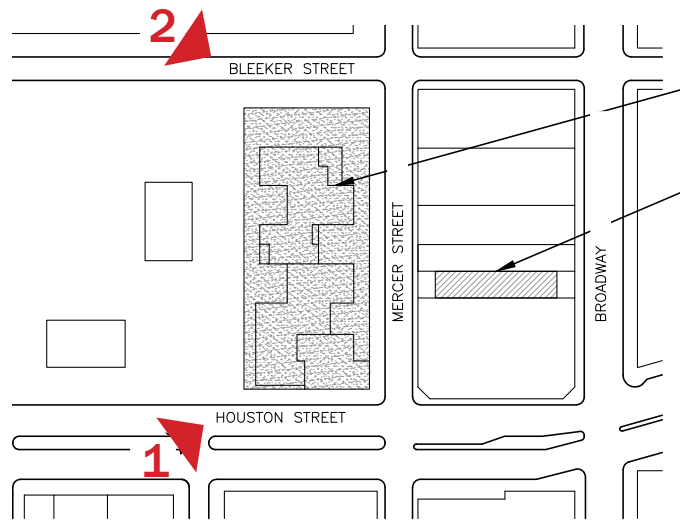


VIEW 2

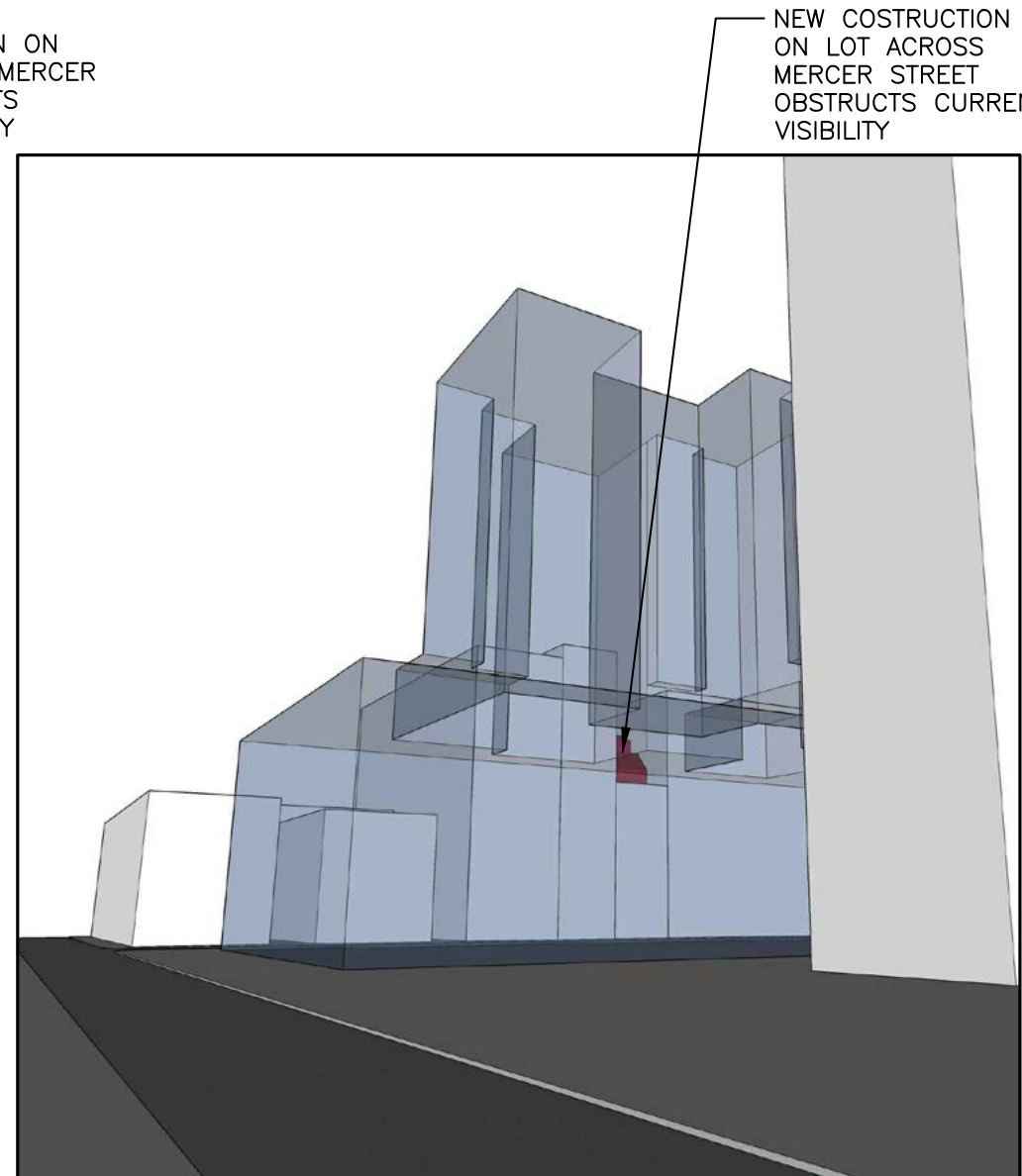


VIEW 1





VIEW 1



VIEW 2

BLUE REPRESENTS  
CURRENT CONSTRUCTION  
AT COMPLETION.

NEW COSTRUCTION ON  
LOT ACROSS ON MERCER  
STREET OBSTRUCTS  
CURRENT VISIBILITY

NEW COSTRUCTION  
ON LOT ACROSS  
MERCER STREET  
OBSTRUCTS CURRENT  
VISIBILITY