

---

THE  
**GREAT JONES**  
DISTILLERY

NEW YORK

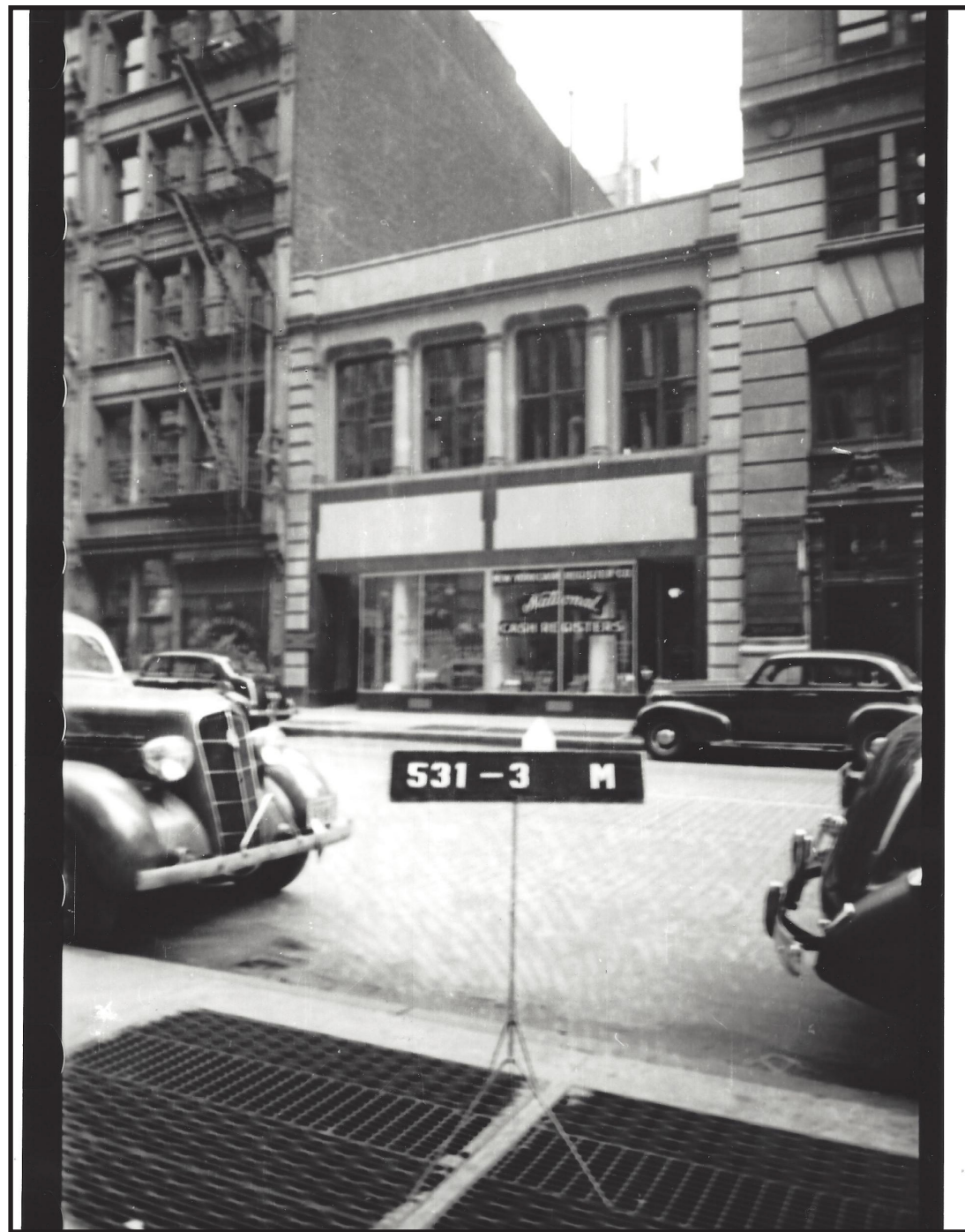


NEW YORK

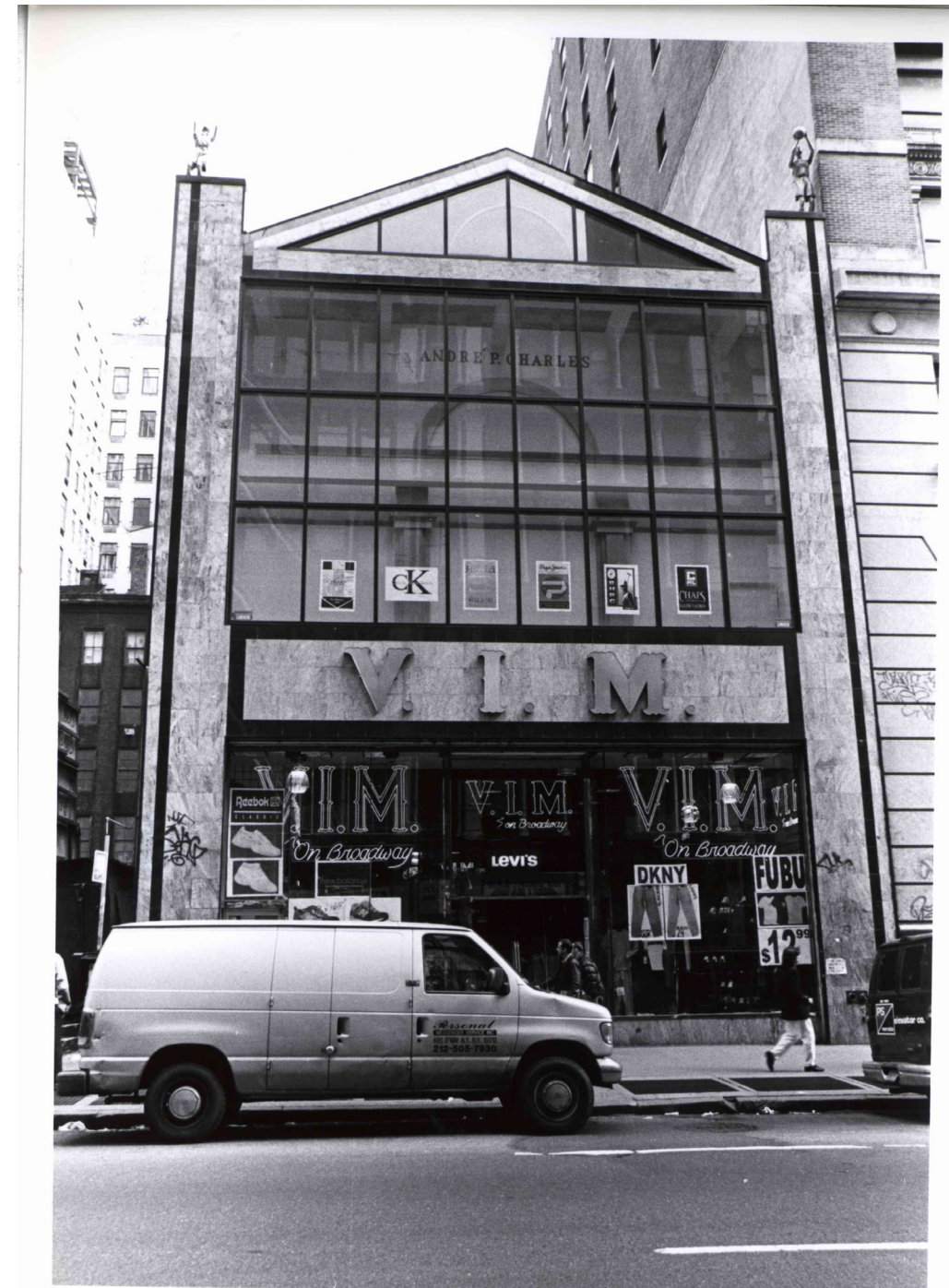
---



VIEW FROM BROADWAY



approx. 1940



approx. 1999



EXISTING ELEVATION - VIEW FROM BROADWAY

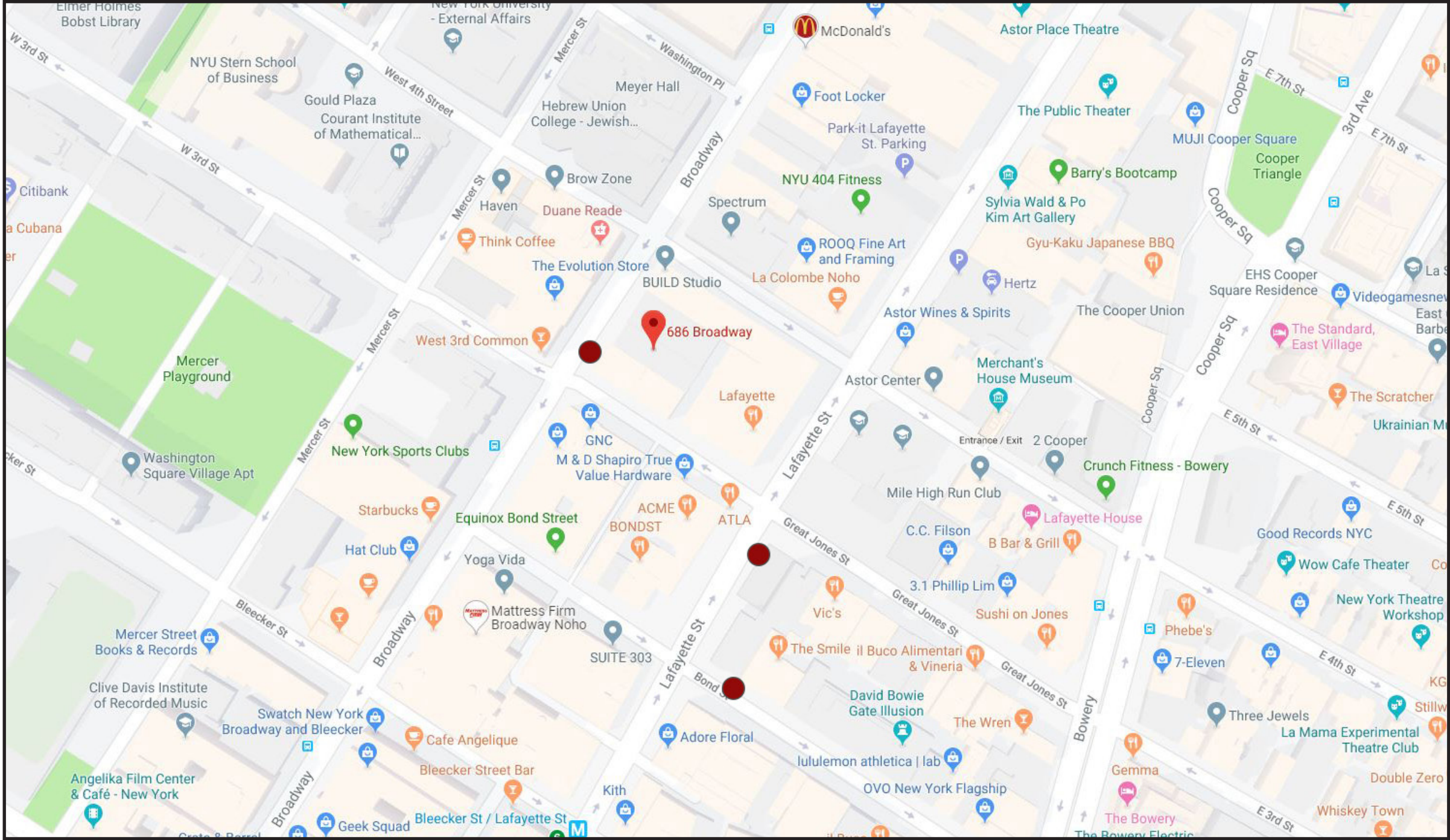


EXISTING ELEVATION - VIEW FROM GREAT JONES ALLEY





KEY MAP OF SURROUNDING PROPERTIES



GREAT JONES DISTILLERY | 686 BROADWAY, NEW YORK, NEW YORK | STOREFRONT INSTALLATION | FEBRUARY 27, 2019 | **KEY MAP**

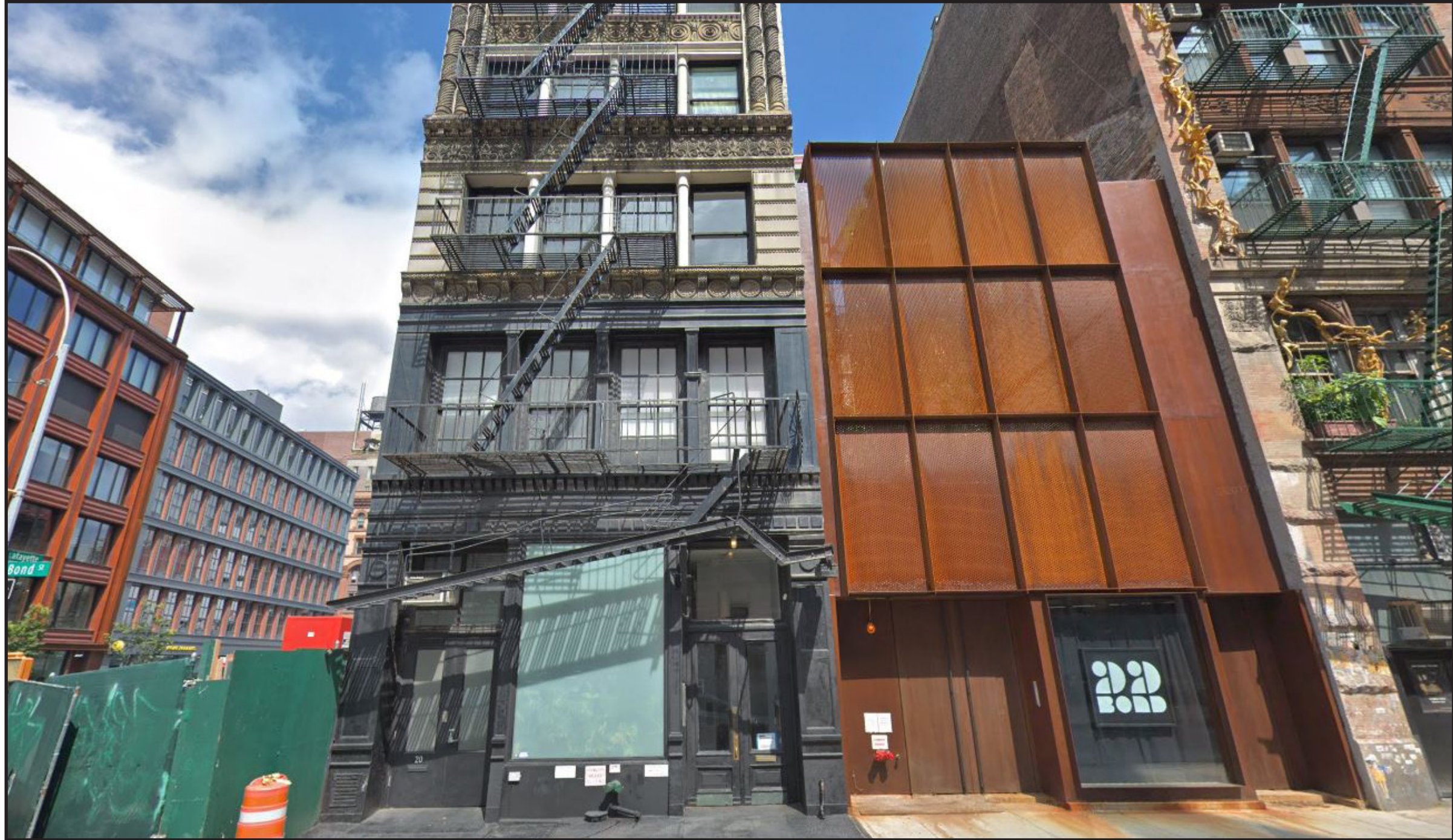


ADJACENT BUILDING ON BROADWAY





SURROUNDING BUILDINGS ON BOND STREET

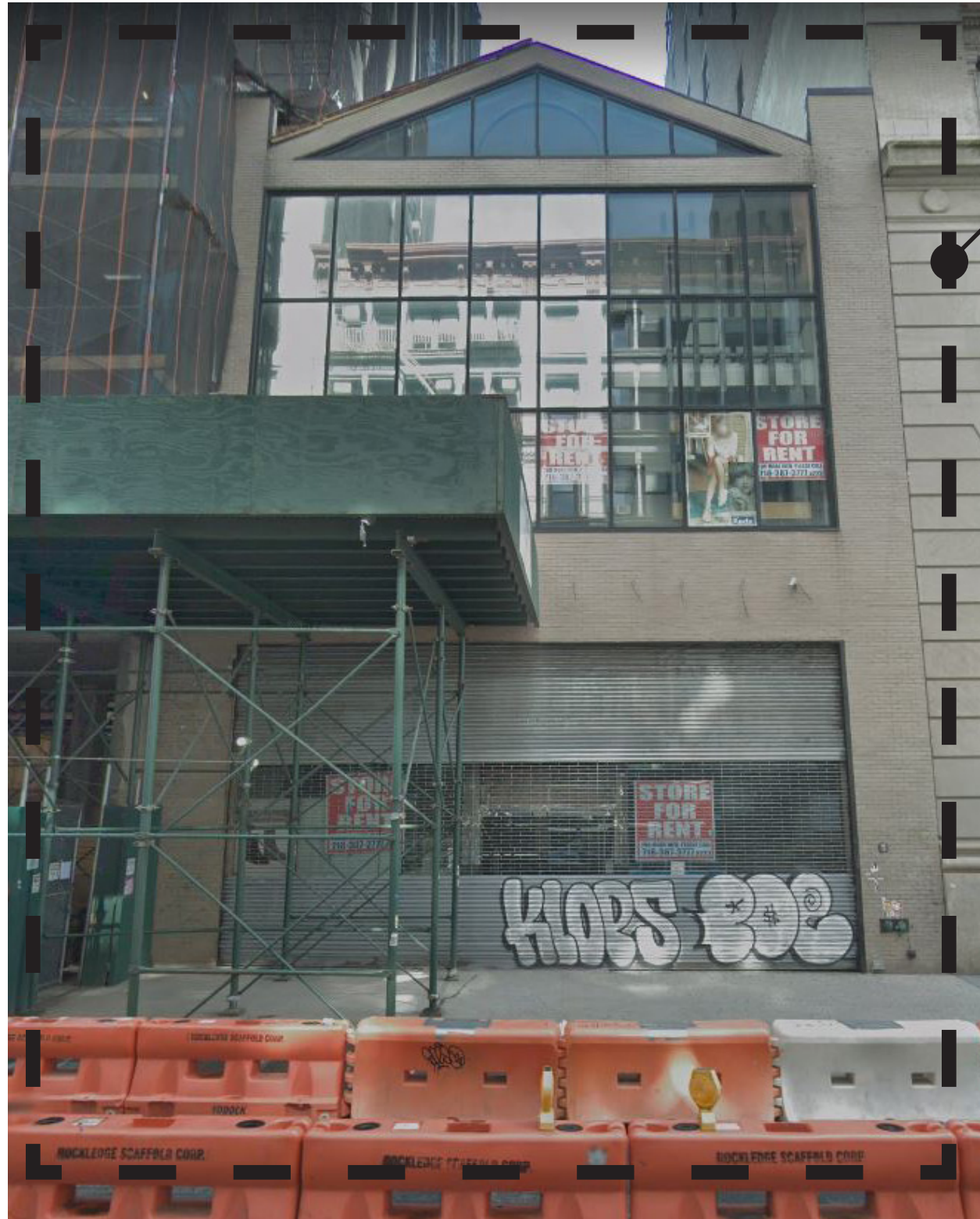




SURROUNDING BUILDINGS ON LAFAYETTE STREET







#### SCOPE OF WORK:

- REMOVAL OF EXISTING STOREFRONT GLAZING SYSTEM AND BRICK VENEER
- INSTALLATION OF NEW BRICK VENEER AND CUT STONE AT FACADE. INSTALL NEW BRASS STOREFRONT AT EACH FLOOR AND PARAPET.

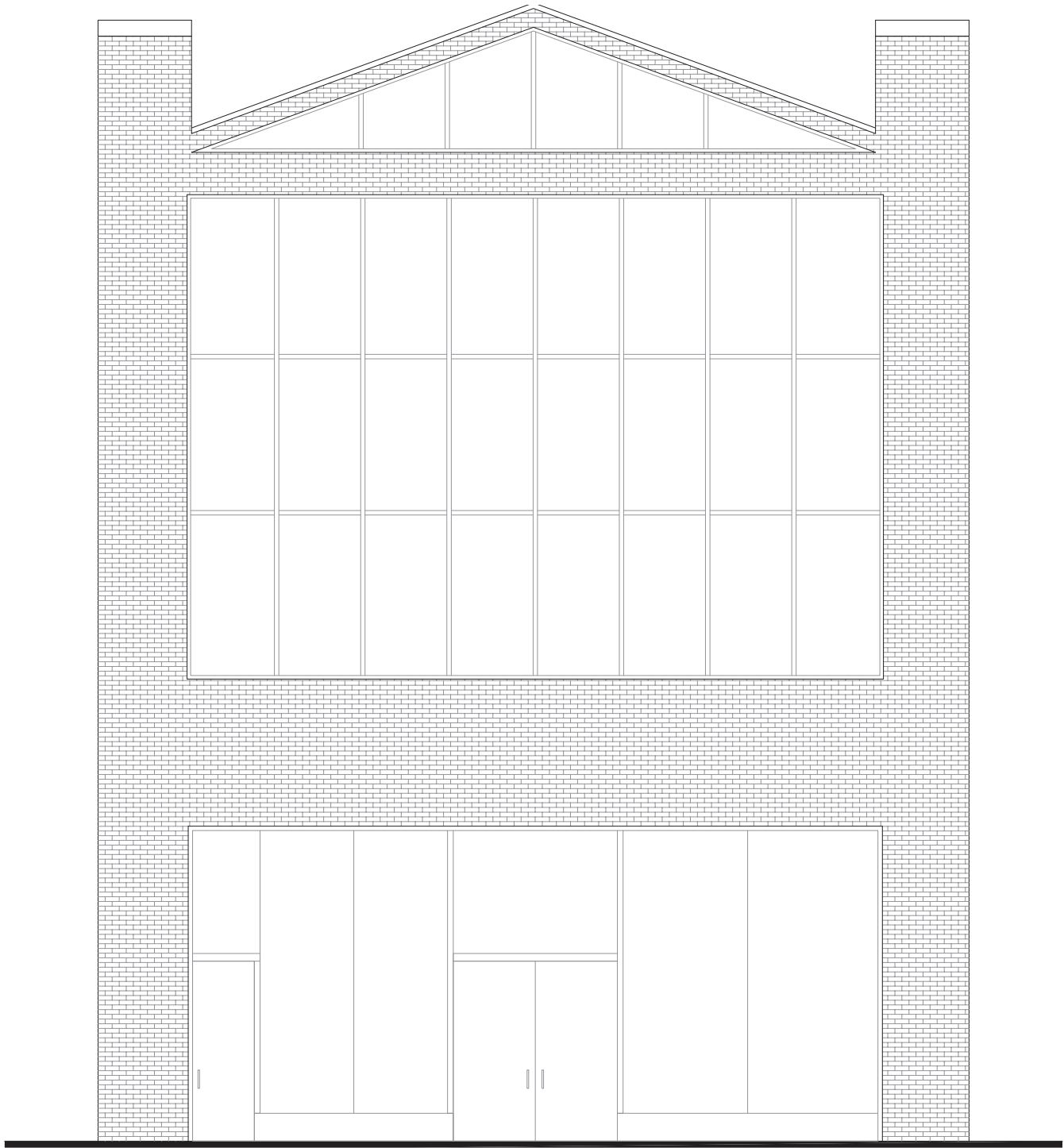
*NO EVIDENCE EXISTS OF ANY REMAINING HISTORIC FABRIC.*

*IF HISTORIC EVIDENCE IS FOUND DURING DEMOLITION, STOREFRONT DESIGN AND CONSTRUCTION SHALL INCORPORATE THOSE FINDINGS.*

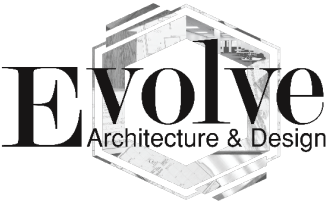
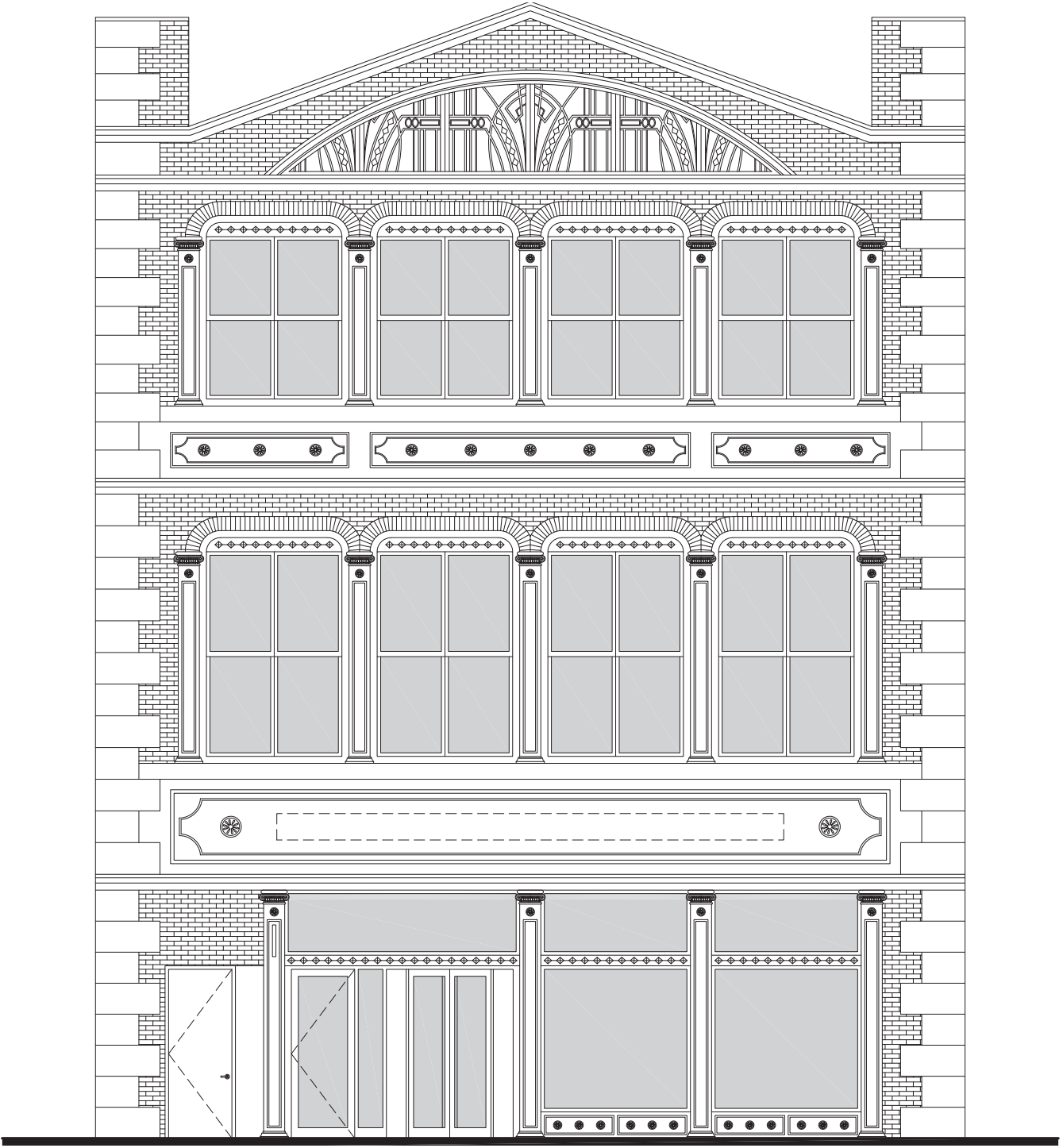




EXISTING ELEVATION AT BROADWAY



PROPOSED ELEVATION AT BROADWAY





HISTORIC REFERENCE



PROPOSED ELEVATION AT BROADWAY

cut stone trim in  
similar color to brick

brass framed  
decorative iron work  
at hvac louver

cast iron band with  
decorative florets

cut stone quoins in  
similar color to brick

non-illuminated  
brass pin letters

non-illuminated  
18" blade sign

brass revolving  
entry doors



decorative brass  
window surrounds

cast iron columns

decorative brass  
window surrounds

cast iron columns

cast iron sign band  
with decorative florets

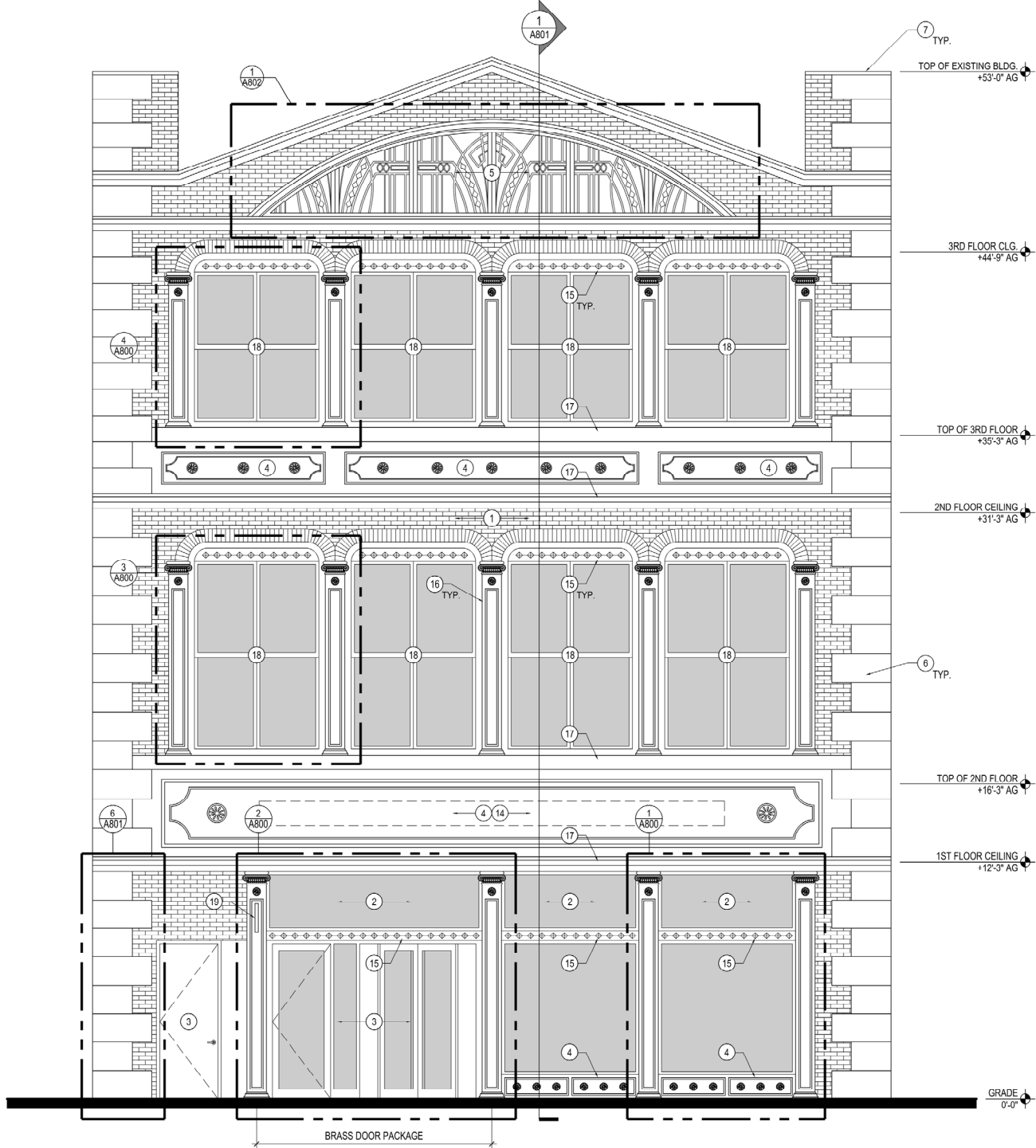
cut stone in similar  
color to brick

glen gary brick veneer

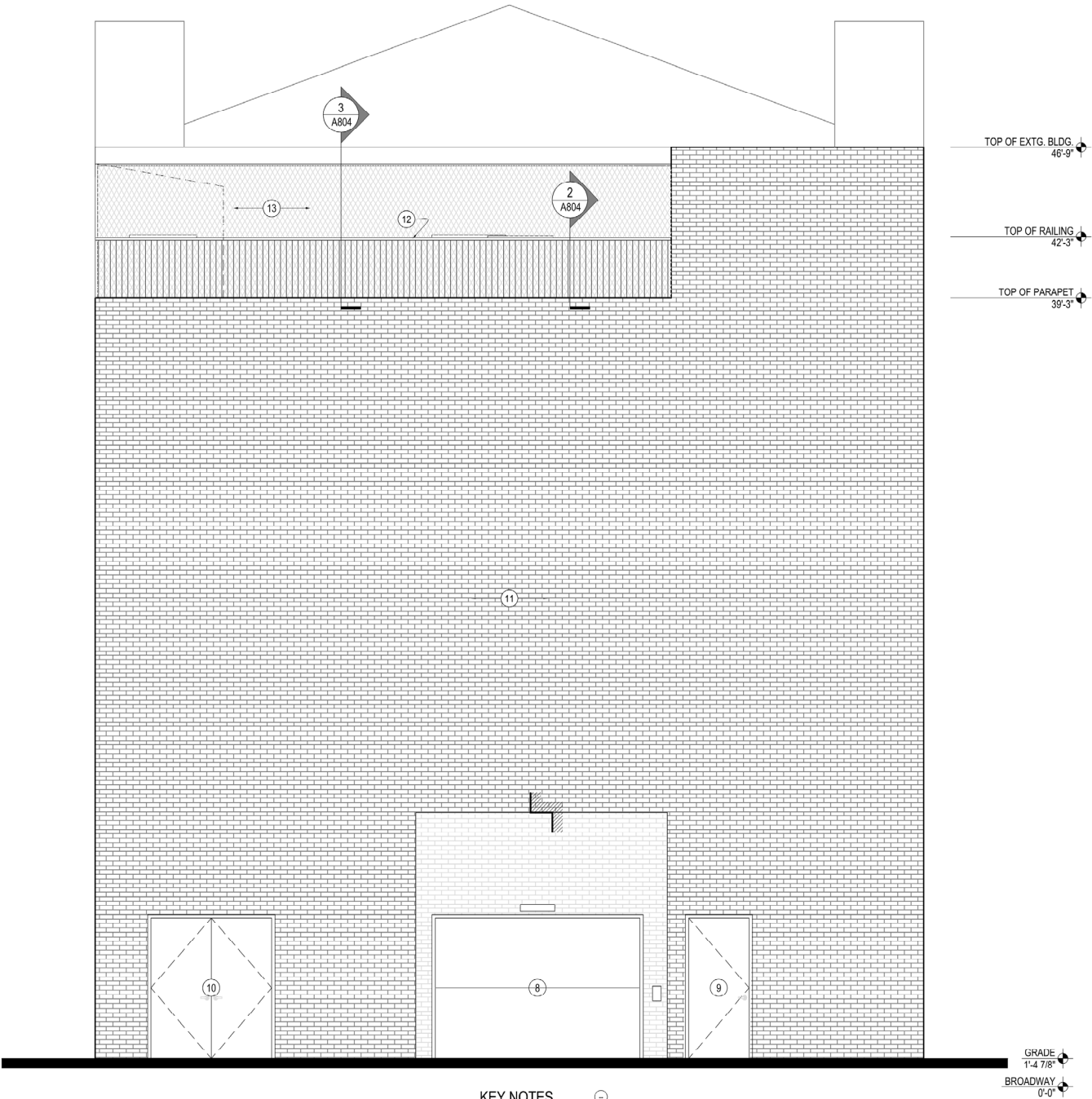
retail display behind  
glass



PROPOSED ELEVATION AT BROADWAY



PROPOSED ELEVATION AT GREAT JONES ALLEY



KEY NOTES

1. PROPOSED BRICK VENEER OVER EXISTING BRICK FACADE FOLLOWING MANUFACTURER'S INSTRUCTIONS. SPEC: GLEN GERY: CARBON BLACK MODULAR, MORTAR = GLEN GERY G-602

2. PROPOSED NEW STOREFRONT SYSTEM WITHIN EXISTING FACADE OPENINGS. SPEC: CUSTOM BRASS FINISH SYSTEM SIMILAR TO KAWNEER TRIFAB. (SEE DETAILS)

3. PROPOSED ENTRY DOORS INCLUDING SOLID EMERGENCY EXIT DOOR, GLAZED STOREFRONT "MAN" DOOR AND REVOLVING DOOR. GLAZED DOORS TO MATCH STOREFRONT SYSTEM FINISH.

4. PROPOSED DECORATIVE CAST IRON BAND.

5. PROPOSED CUSTOM DECORATIVE WROUGHT IRON GRILL COVERING NEW HVAC VENTING LOUVERS.

6. PROPOSED NEW CUT-STONE QUIONS TO MATCH BRICK VENEER.

7. PROPOSED NEW METAL CAPPING AT EXISTING PARAPET.

8. PROPOSED NEW FREIGHT ELEVATOR DOOR

9. EXISTING EXIT DOOR TO BE REPLACED IN KIND, PAINT - SW 6991/BLACK MAGIC - DOOR + TRIM
10. PROPOSED NEW SOLID METAL RECEIVING DOOR, PAINT - SW 6991/BLACK MAGIC - DOOR + TRIM

11. EXISTING BRICK FACADE TO REMAIN. BRICK TO BE RE-POINTED AS REQUIRED. PAINT TO MATCH SAMPLE PROVIDED. GO TO CLEAN & WIRE BRUSH AS REQUIRED.

12. PROPOSED NEW RAILING AT EXISTING PARAPET.

13. PROPOSED FENCING AT ROOF EGRESS PATH.

14. PROPOSED 15" NON-ILLUMINATED BRASS PIN LETTER SIGNAGE.

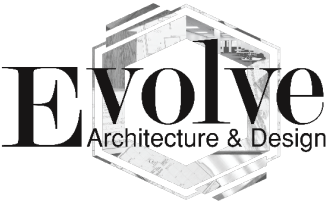
15. PROPOSED DECORATIVE BRASS TRANSOM MULLION WITH DECORATIVE "PYRAMIDS".

16. PROPOSED DECORATIVE CAST IRON COLUMN.

17. PROPOSED CUT-STONE TRIM.

18. PROPOSED BRASS FRAMED DOUBLE HUNG WINDOWS.

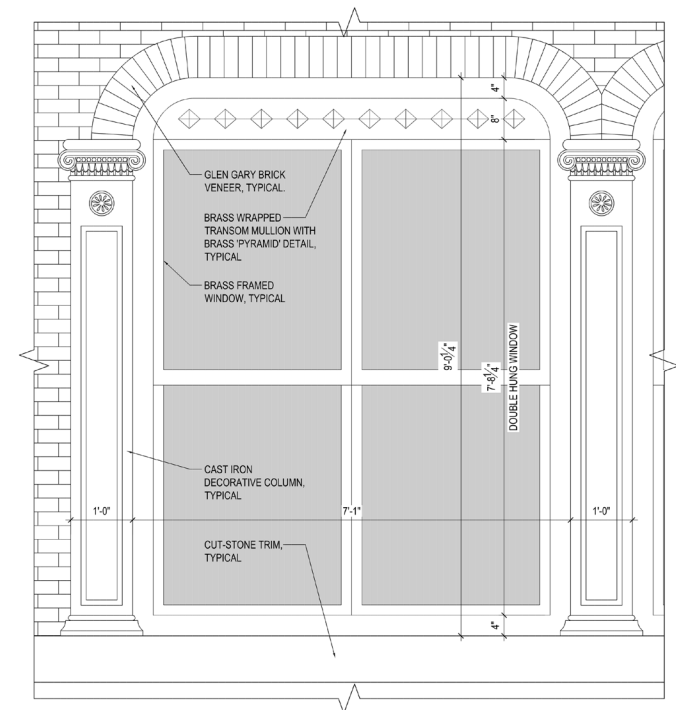
19. PROPOSED 18" NON-ILLUMINATED BRASS BLADE SIGN.





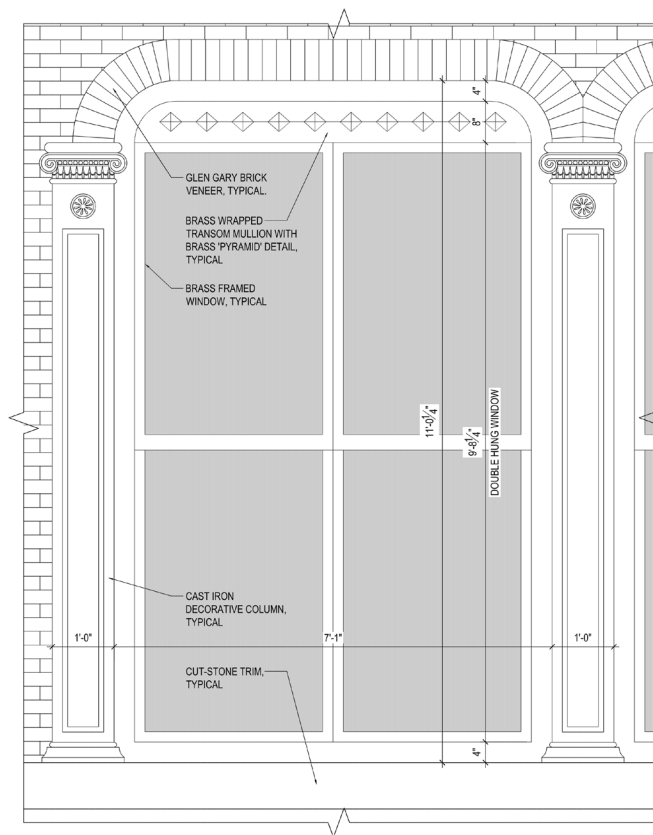


18" NON-ILLUMINATED  
BRASS BLADE SIGN



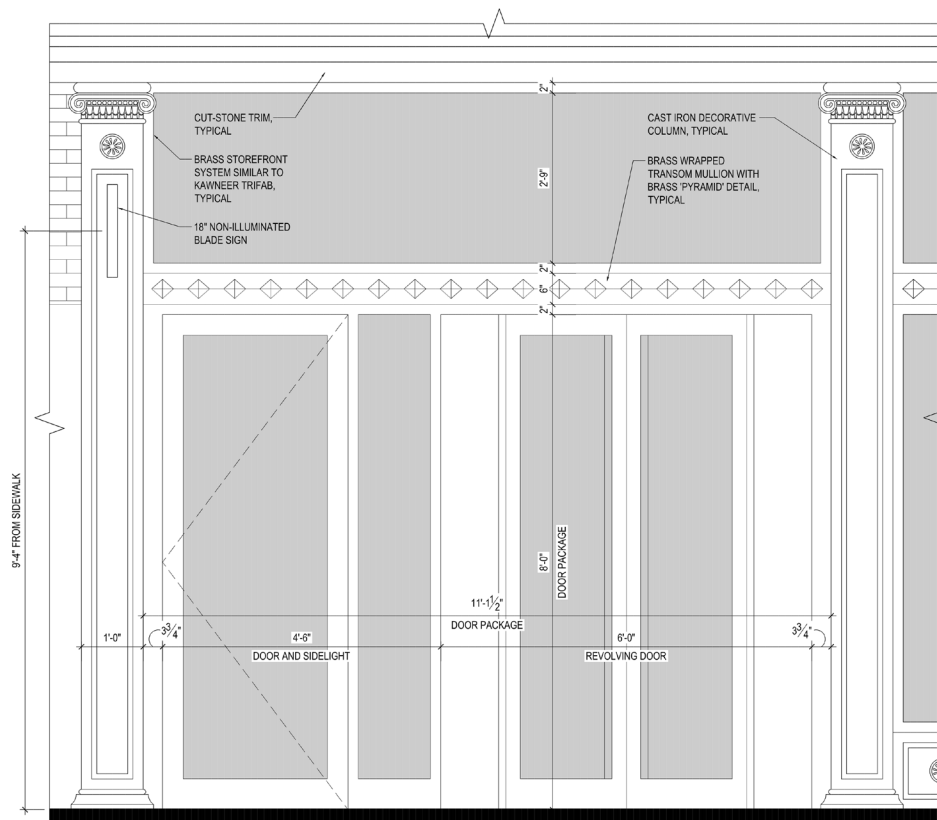
ELEVATION AT THIRD FLOOR STOREFRONT  
SCALE: 3/4" = 1'-0"

4



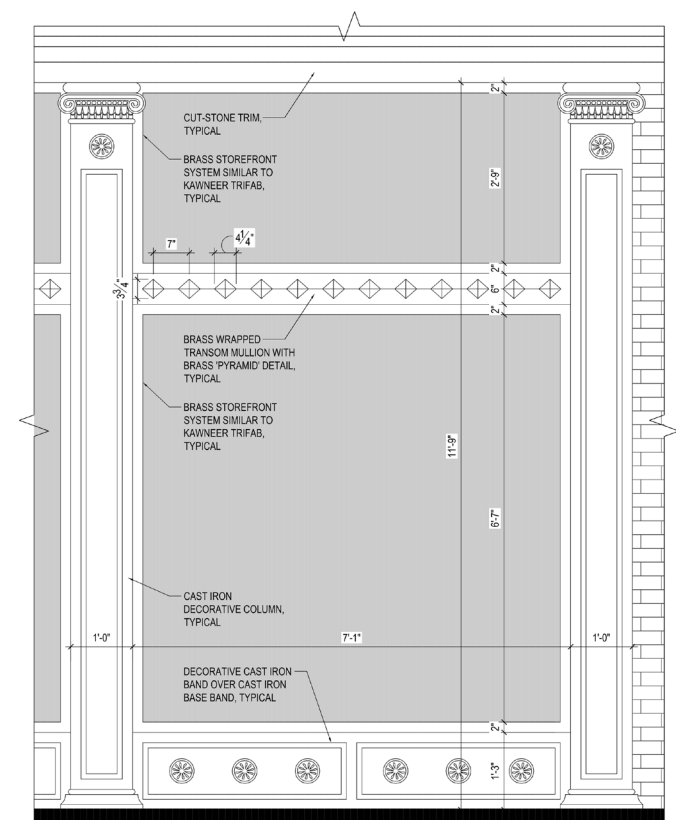
ELEVATION AT SECOND FLOOR STOREFRONT  
SCALE: 3/4" = 1'-0"

3



ELEVATION AT GROUND FLOOR DOOR PACKAGE  
SCALE: 3/4" = 1'-0"

2

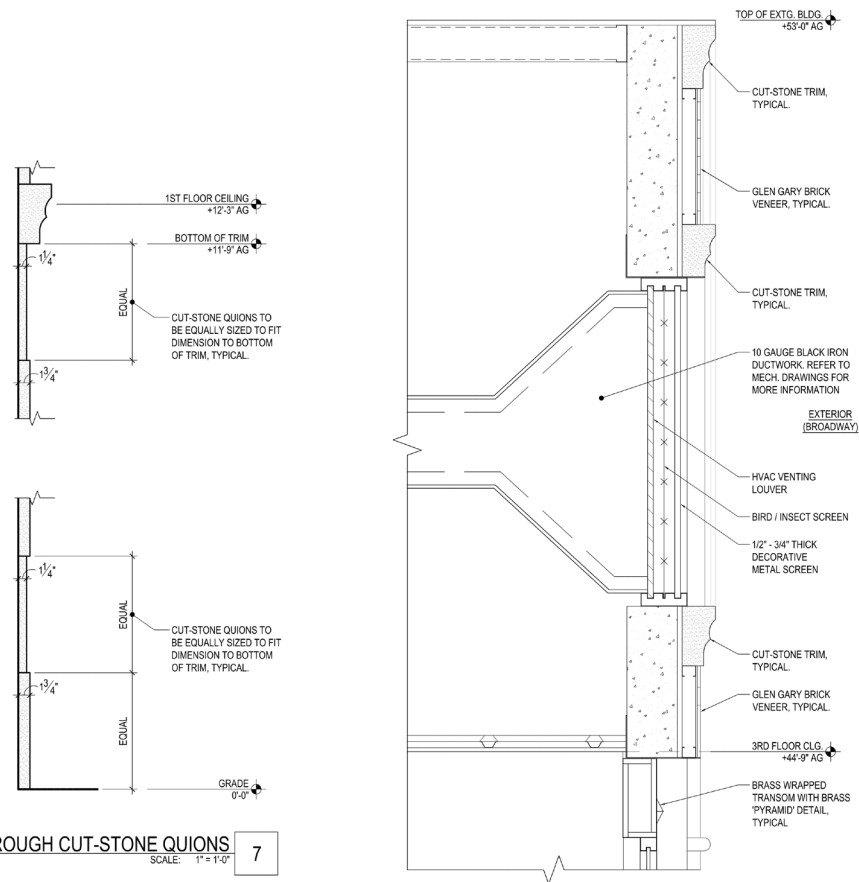


ELEVATION AT GROUND FLOOR STOREFRONT  
SCALE: 3/4" = 1'-0"

1



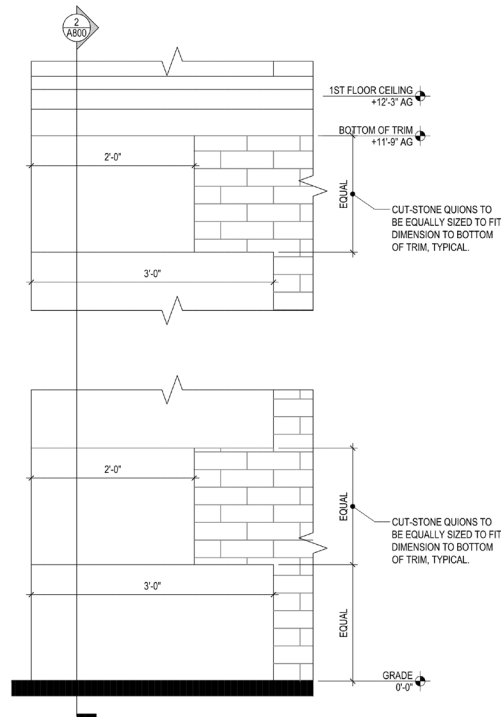




SECTION THROUGH CUT-STONE QUIONS

SCALE: 1" = 1'-0"

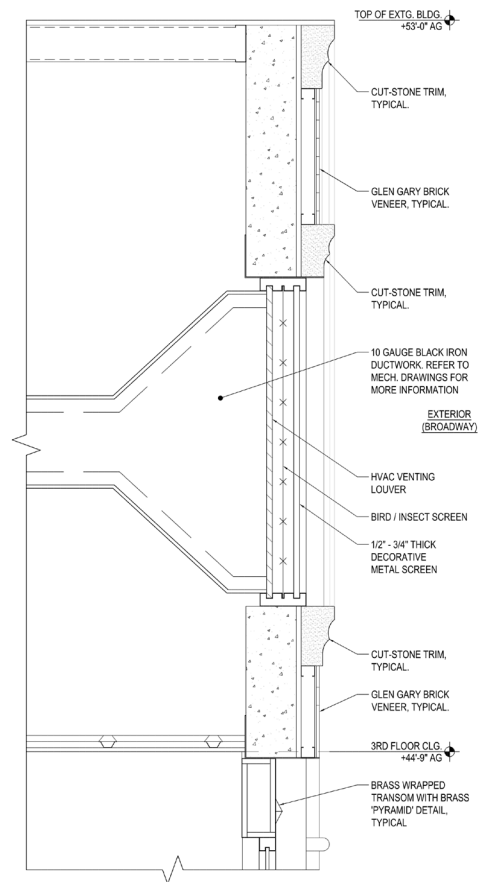
7



ELEVATION OF CUT-STONE QUIONS

SCALE: 1" = 1'-0"

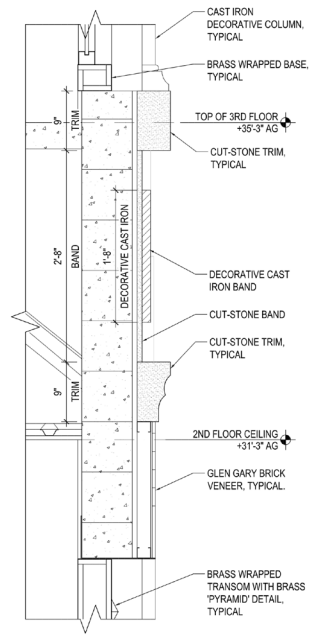
6



SECTION THROUGH HVAC LOUVER

SCALE: 1" = 1'-0"

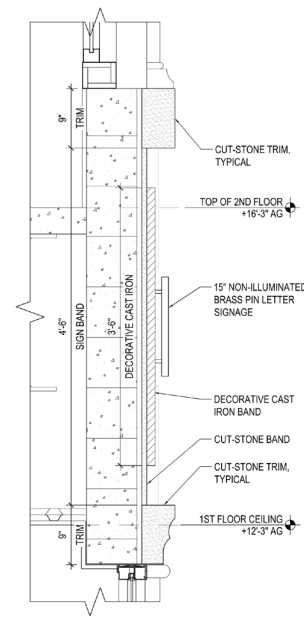
5



SECTION THROUGH THIRD FLOOR BAND

SCALE: 1" = 1'-0"

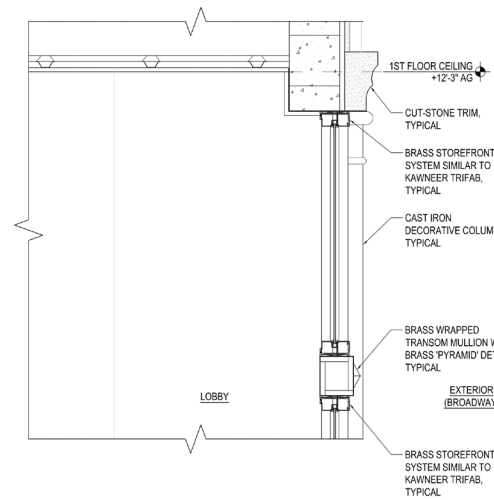
4



SECTION THROUGH SIGNBAND

SCALE: 1" = 1'-0"

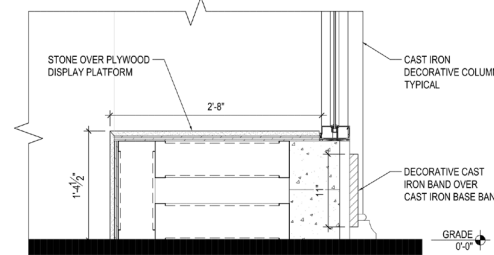
3



SECTION THROUGH LOBBY STOREFRONT

SCALE: 1" = 1'-0"

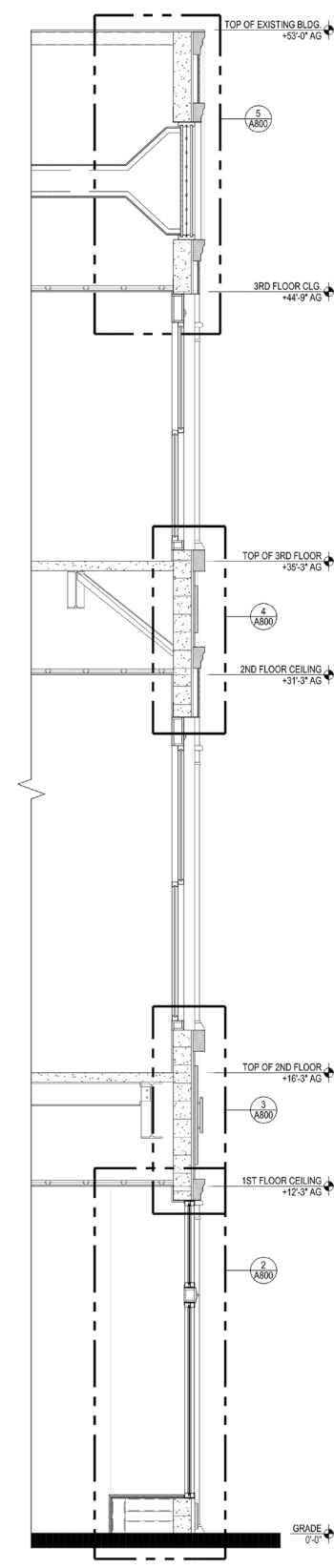
2



SECTION THROUGH LOBBY STOREFRONT

SCALE: 1" = 1'-0"

2



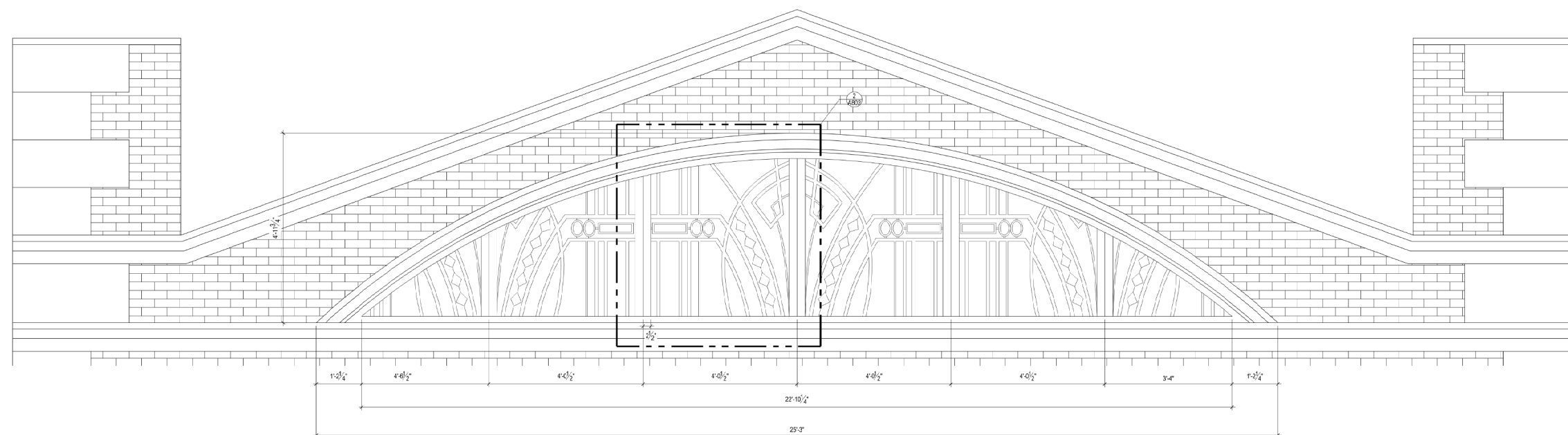
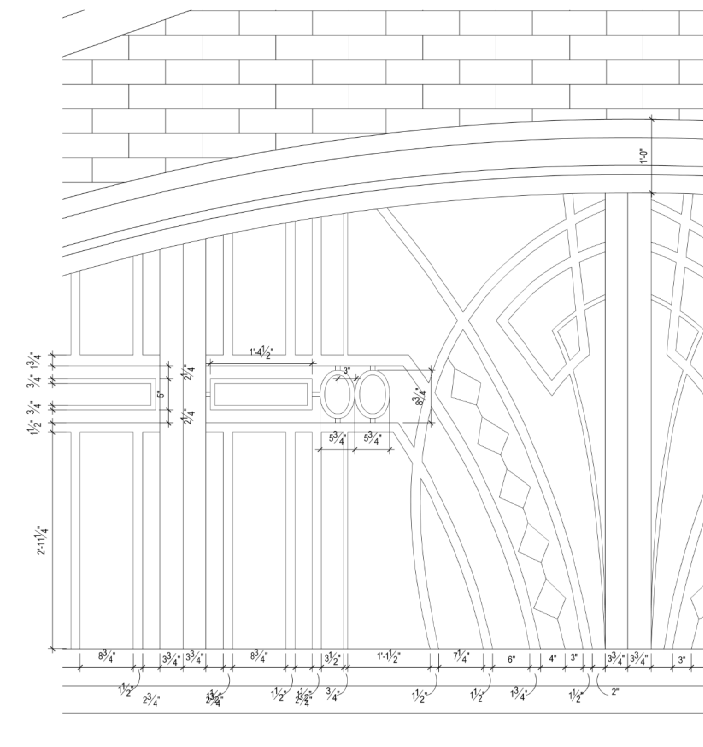
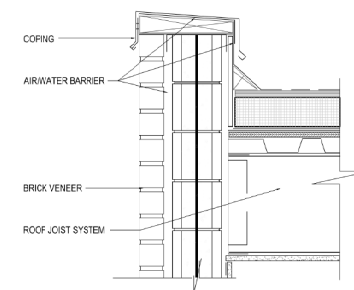
SECTION THROUGH FACADE

SCALE: 3/8" = 1'-0"

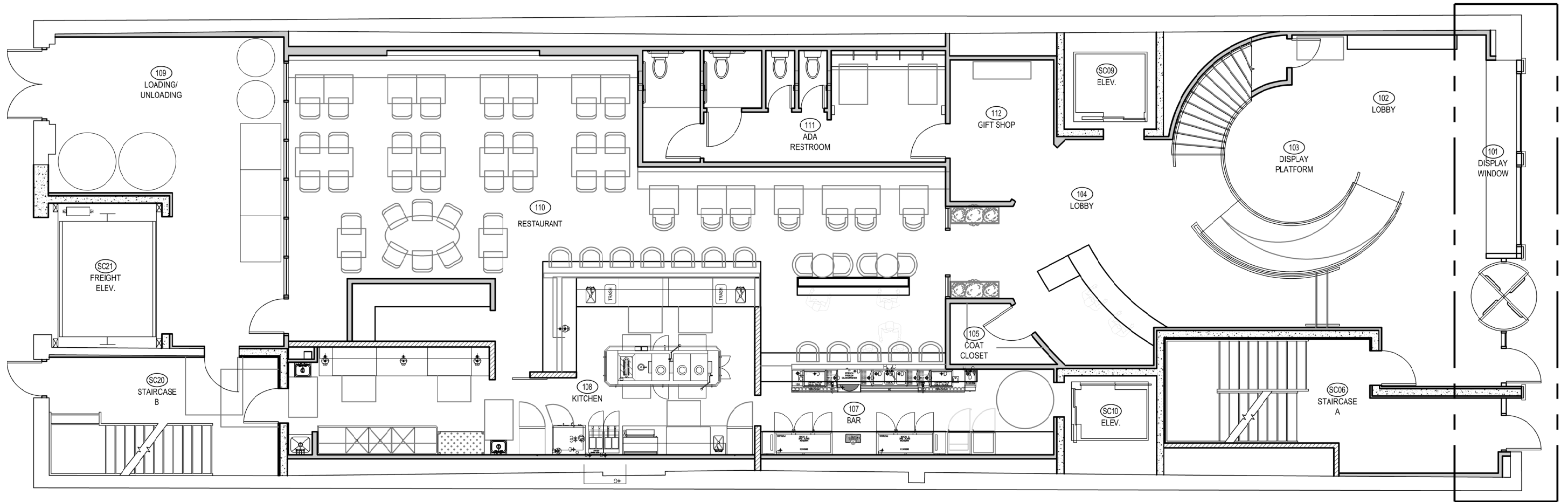
1





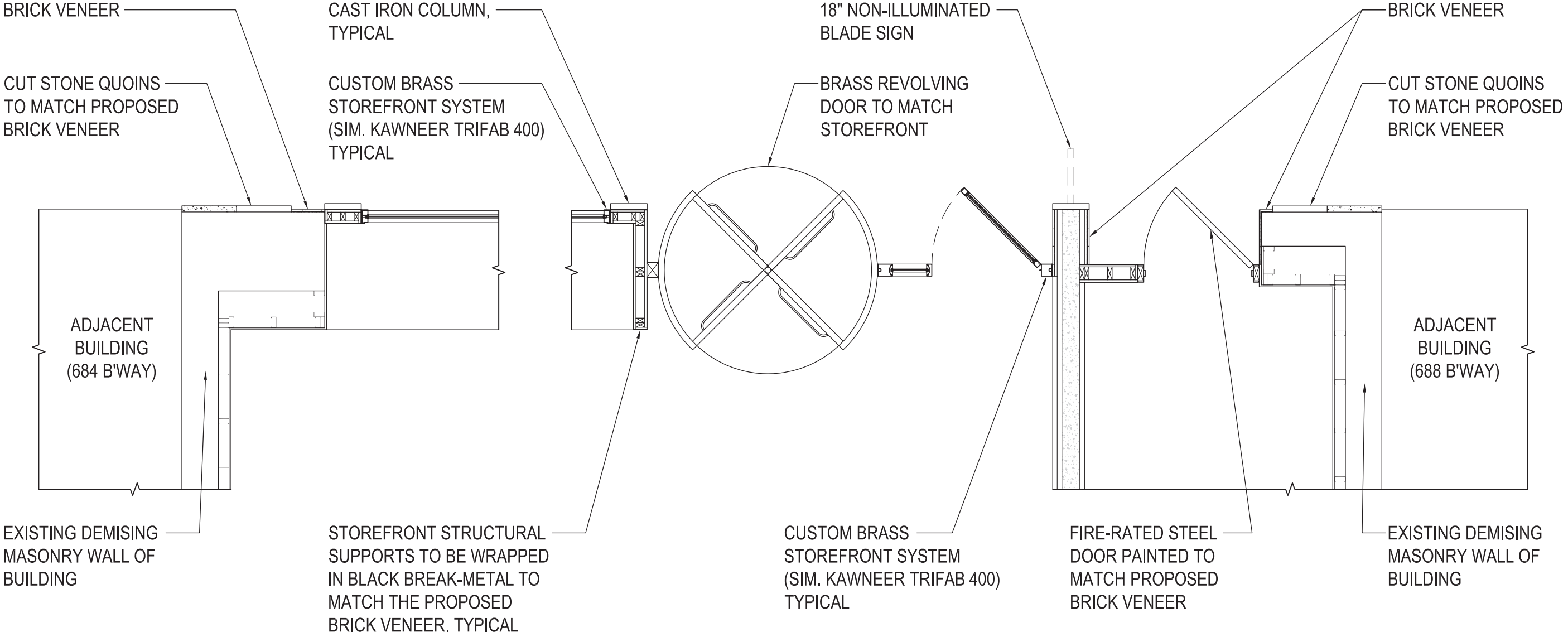








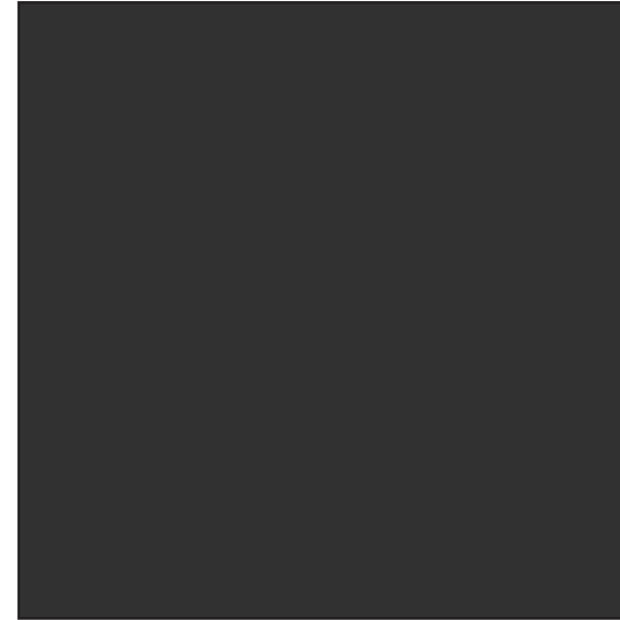
BROADWAY



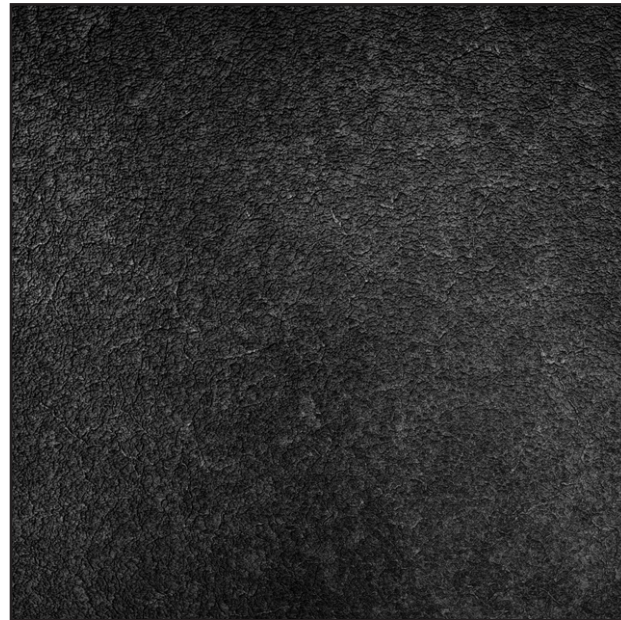




EXTERIOR FACADE: GLEN GERY BRICK VENEERS, CARBON BLACK. MORTAR COLOR: GLEN GERY G-602



EXTERIOR IRON WORK: TO BE POWDER COATED BLACK TO MATCH SHERWIN WILLIAMS SW 6991



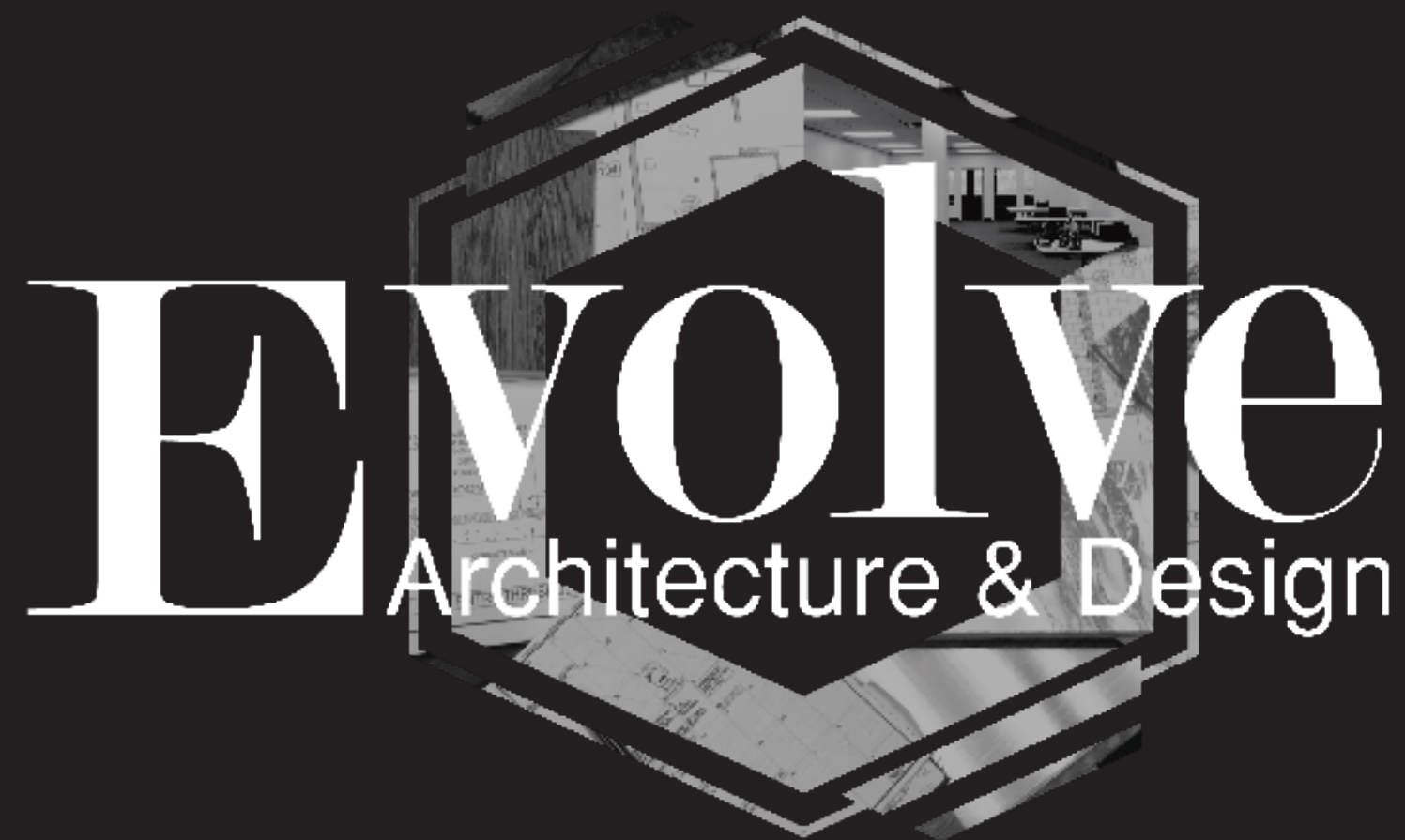
EXTERIOR QUOIN: CUT-STONE TO MATCH BRICK VENEER



EXTERIOR STORE FRONT: CUSTOM ANTIQUE BRASS







532 Broadhollow Road Suite 139 • Melville NY 11747 • 631-432-3970 • [info@evolvead.net](mailto:info@evolvead.net)