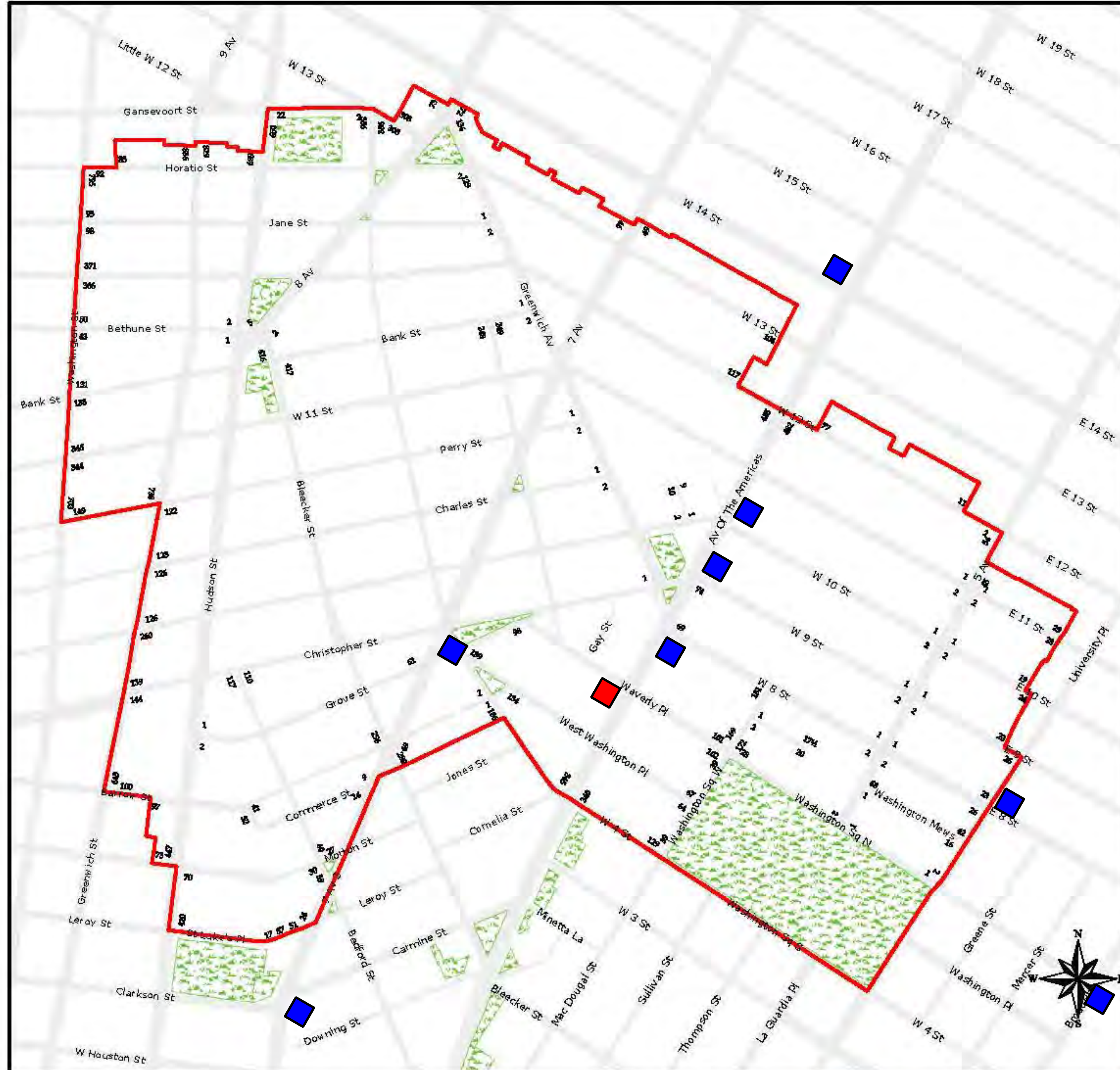


Greenwich Village



Greenwich Village Historic District
Manhattan
Designated April 29, 1969

Historic District Boundaries

■ PROPOSED NEWSSTAND
■ EXISTING NEWSSTANDS



PROTO-TYPE DESIGN / CEMUSA FRONT / RIGHT
SALES ONLY



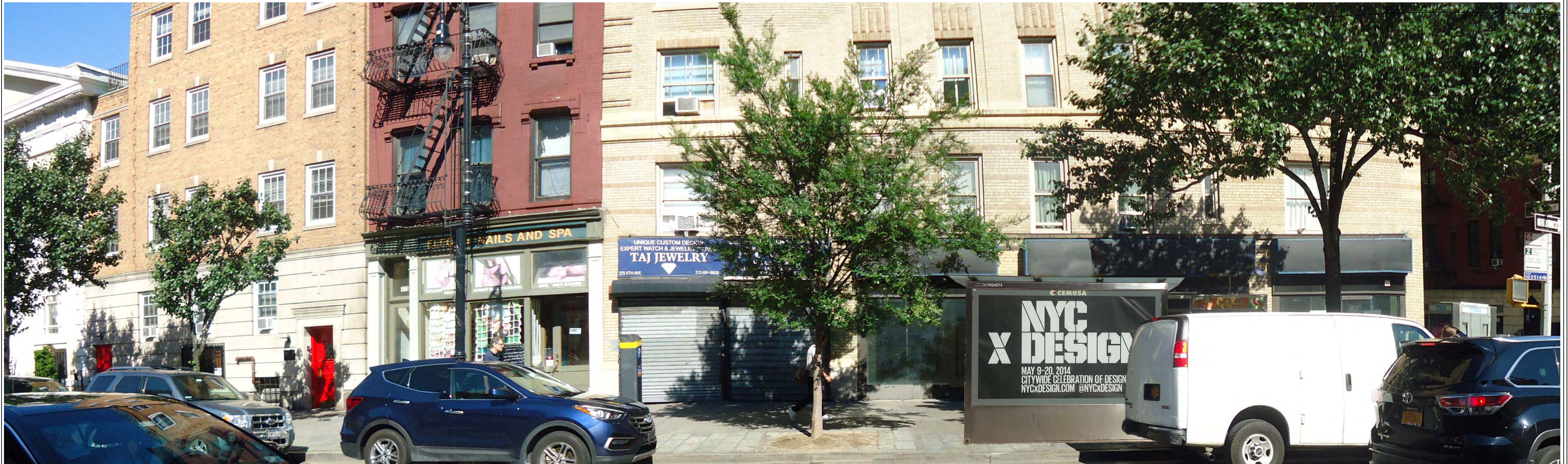
PROTO-TYPE DESIGN / CEMUSA BACK / LEFT
TWO ADS ONLY

JAMES GARRETSON AIA, ARCHITECT
164 WEST 79TH STREET, SUITE 5B
NEW YORK, NY 10024

PROTO-TYPICAL NEWSSTAND
SWC 6TH AVENUE & WAVERLY PLACE
APPLICATION # 11415-2017-ANWS

DISTRICT MAP &
CEMUSA PROTO-TYPICAL DESIGN

DATE: 01/08/18
REVISED: 02/20/18



LOOKING WEST



LOOKING SOUTH



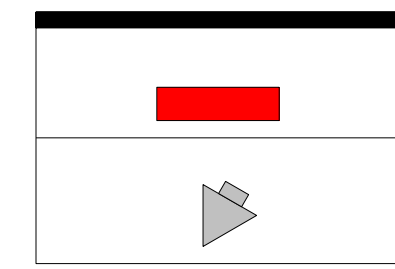
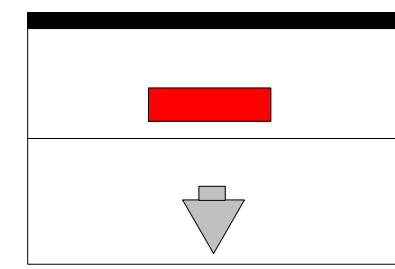
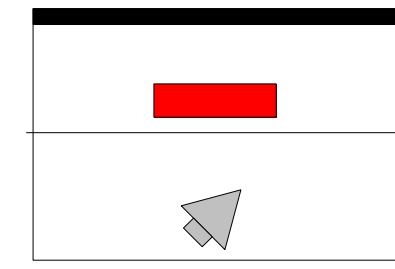
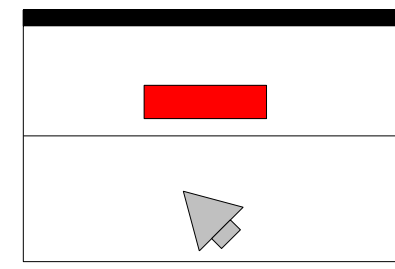
LOOKING NORTH

JAMES GARRETSON AIA, ARCHITECT
 164 WEST 79TH STREET, SUITE 5B
 NEW YORK, NY 10024

PROTO-TYPICAL NEWSSTAND
 SWC 6TH AVENUE & WAVERLY PLACE
 APPLICATION # 11415-2017-ANWS

MONTAGE
 NO SCALE

DATE: 01/08/18



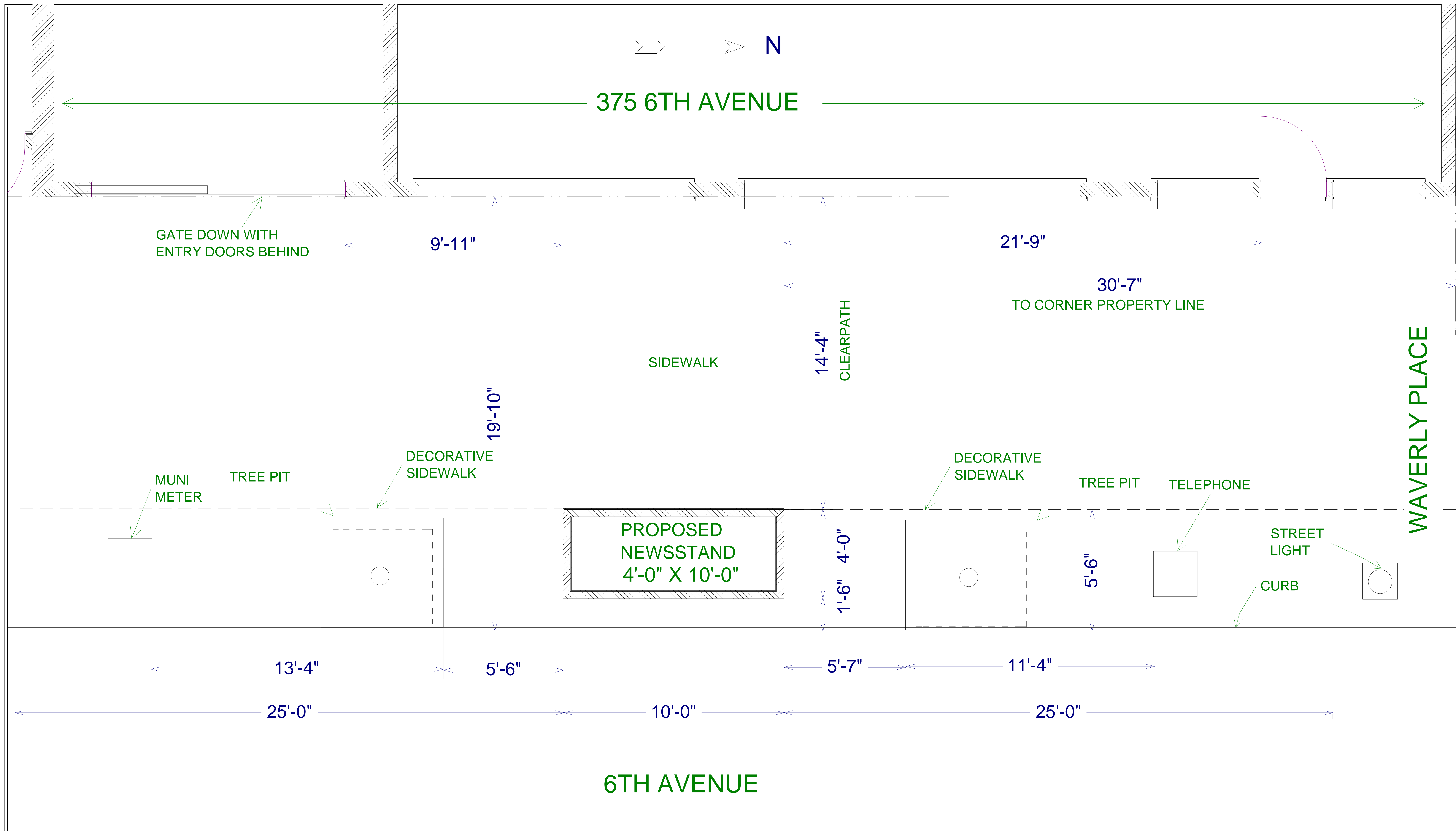
JAMES GARRETSON AIA, ARCHITECT
164 WEST 79TH STREET, SUITE 5B
NEW YORK, NY 10024

PROTO-TYPICAL NEWSSTAND
SWC 6TH AVENUE & WAVERLY PLACE
APPLICATION # 11415-2017-ANWS

SITE PHOTOS

DATE: 01/08/18

5

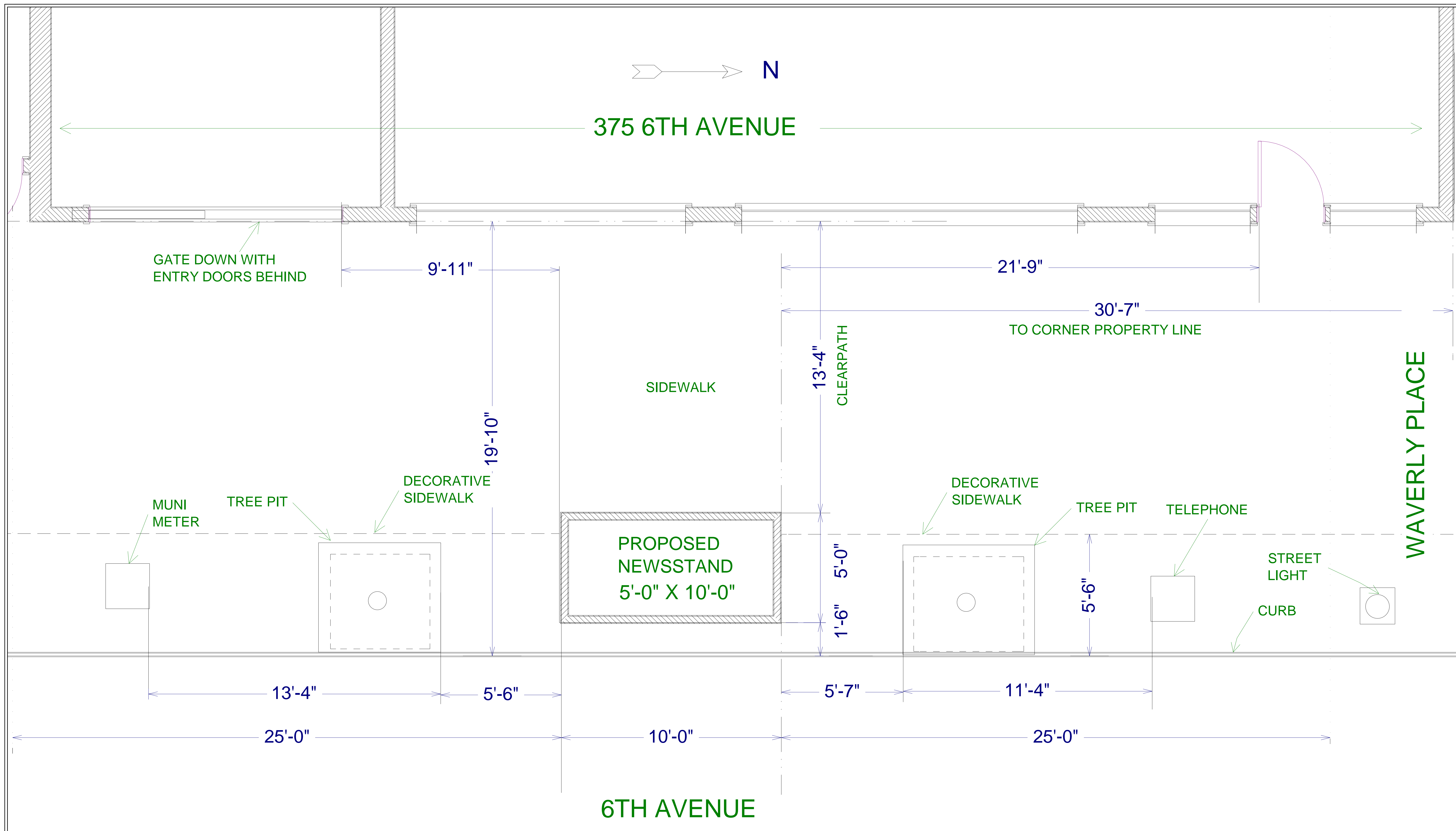


JAMES GARRETSON AIA, ARCHITECT
 164 WEST 79TH STREET, SUITE 5B
 NEW YORK, NY 10024

PROTO-TYPICAL NEWSSTAND
 SWC 6TH AVENUE & WAVERLY PLACE
 APPLICATION # 11415-2017-ANWS

**ALTERNATE
 SITE PLAN**
 SCALE: 1/4" = 1'-0"

DATE: 01/08/18



JAMES GARRETSON AIA, ARCHITECT
 164 WEST 79TH STREET, SUITE 5B
 NEW YORK, NY 10024

PROTO-TYPICAL NEWSSTAND
 SWC 6TH AVENUE & WAVERLY PLACE
 APPLICATION # 11415-2017-ANWS

SITE PLAN

SCALE: 1/4" = 1'-0"
 DATE: 01/08/18