

77 MACDOUGAL STREET

NEW YORK, NY 10012

ALTERNATE ADDRESSES:
73 MACDOUGAL STREET
75 MACDOUGAL STREET



BLOCK: 526
LOT: 30
COMMUNITY BOARD 2
ZONING MAP: 12a
PRIMARY ZONING: R7-2
SOUTH VILLAGE HISTORIC DISTRICT
(DESIGNATED DECEMBER 17, 2013)

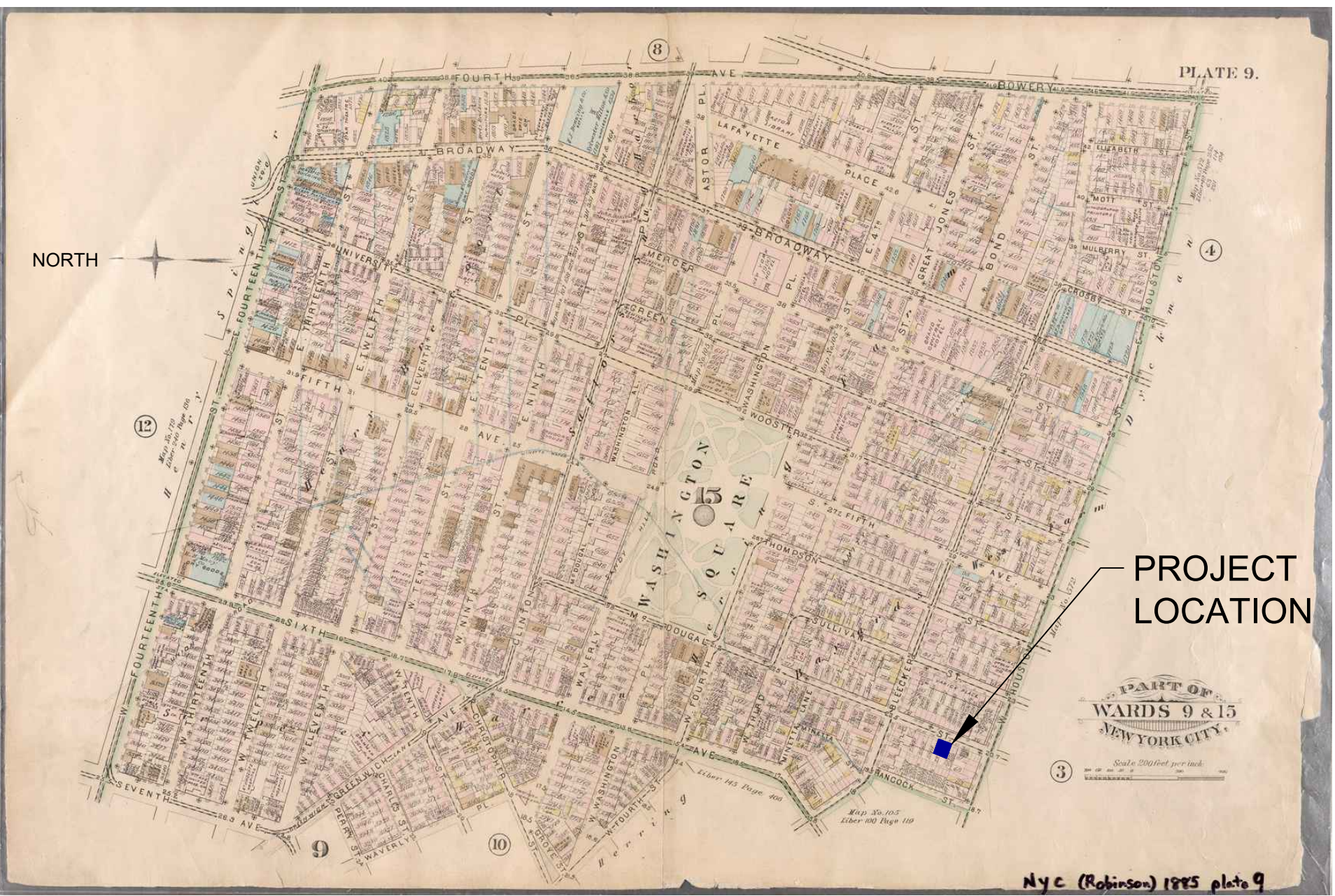
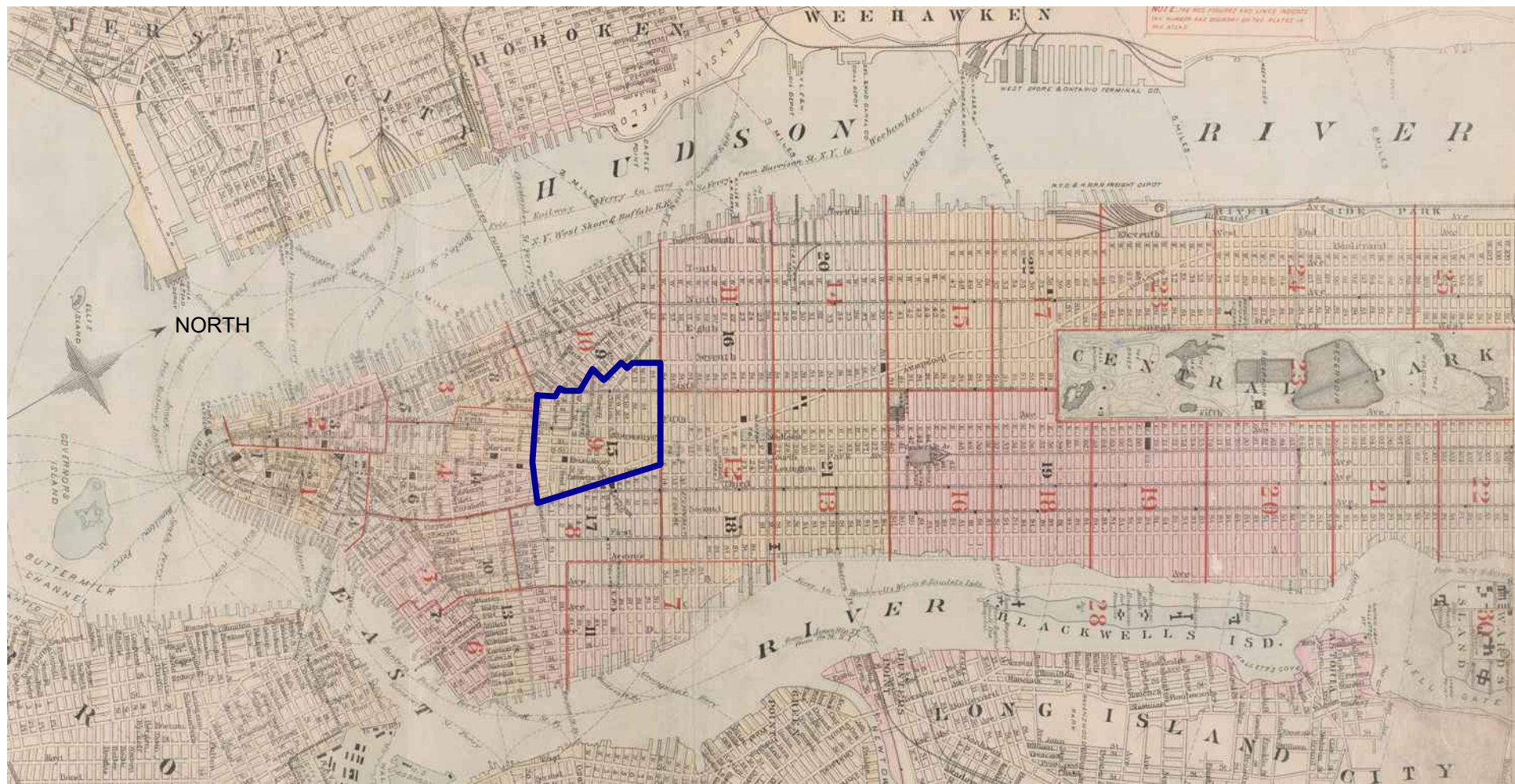
APPLICATION IS TO REPLACE EXISTING
GRANITE PAVERS AND CONCRETE AT
SIDEWALK AND AREAWAY IN ORDER TO
ELIMINATE TRIP HAZARDS, IMPROVE SLIP
RESISTANCE, AND IMPROVE DURABILITY.

PROJECT BACKGROUND

77 MACDOUGAL STREET
NEW YORK, NY 10012

BLOCK: 526
LOT: 30
ZONING MAP: 12a
ZONING DISTRICT: R7-2
DESIGNATION: SOUTH VILLAGE HISTORIC DISTRICT, 2013

NOTE: LOT INCLUDES 73 MACDOUGAL STREET, 75 MACDOUGAL STREET,
AND 77 MACDOUGAL STREET



LOCATION INFORMATION

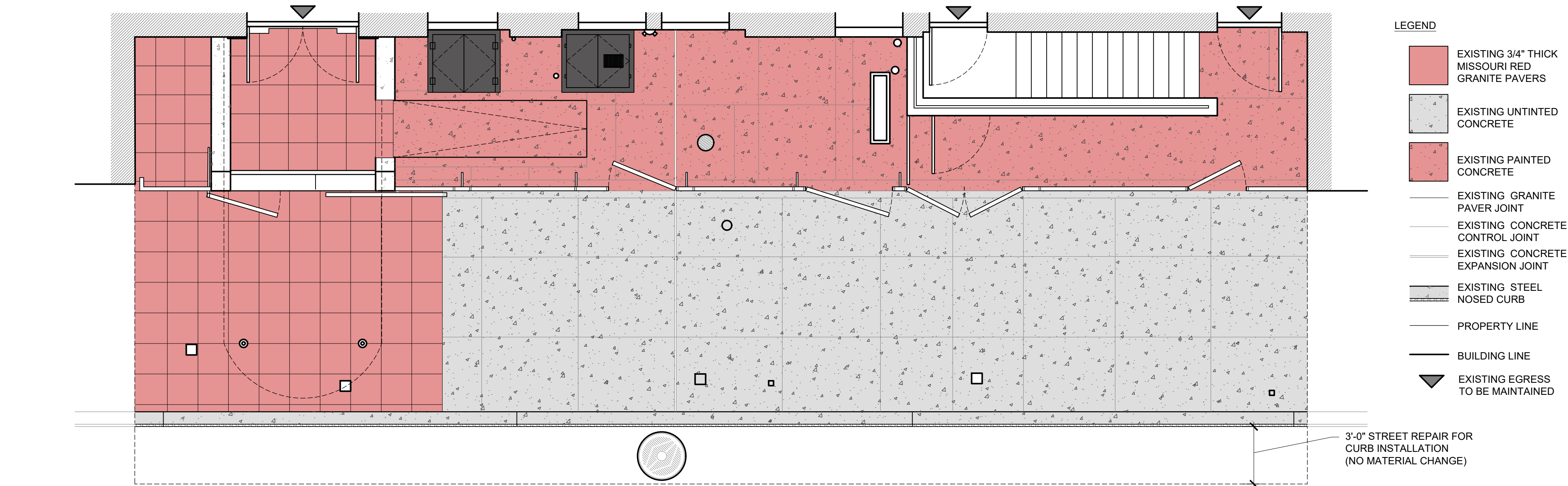
ORIGINAL TRIPLE-HEIGHT CAST-IRON BALCONIES
REMOVED AROUND 1939-40

AREA OF WORK

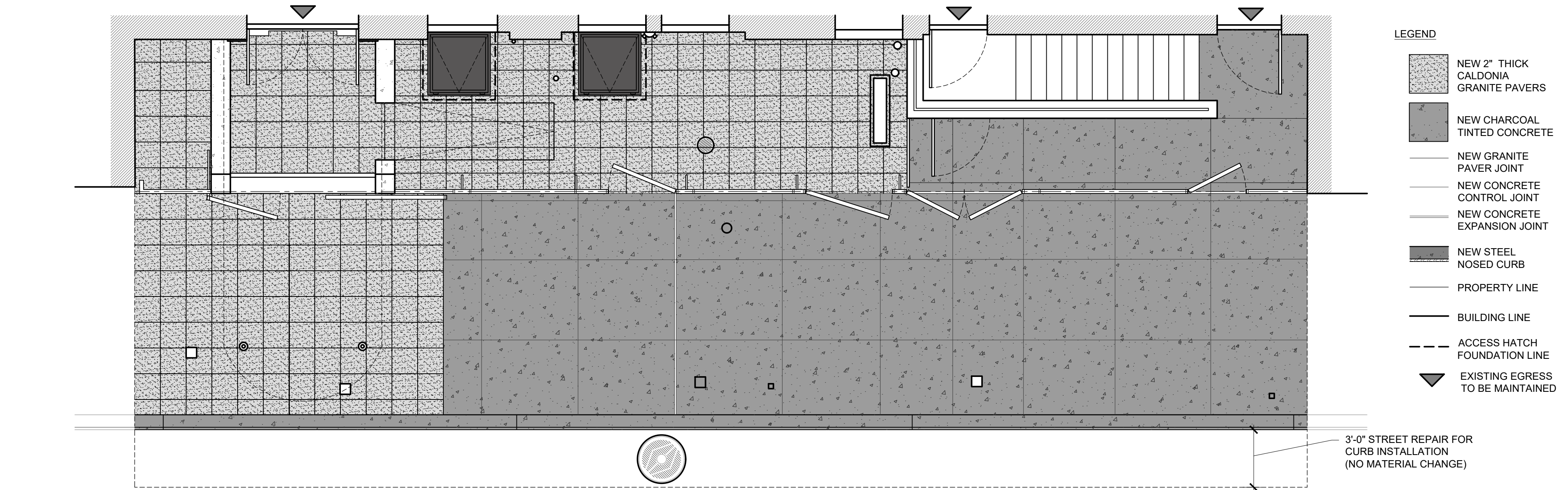
St. Clement's Place, 73 to 77 MacDougal Street
Photo: New York City Department of Taxes (c. 1939,
Courtesy New York City Municipal Archives

73 to 77 MacDougal Street
Photo: Christopher D. Brazee (December 12, 2013)

SOUTH VILLAGE HISTORIC DISTRICT PRESERVATION DESIGNATION



EXISTING SIDEWALK PLAN



PROPOSED SIDEWALK PLAN



PROPOSED SIDEWALK MATERIAL



EXISTING MATERIALS:
 UNTINTED CONCRETE (75 & 77 MACDOUGAL)
 UNTINTED CONCRETE & MISSOURI RED ¾" THICK GRANITE (73 MACDOUGAL)



NEW MATERIALS:
 CHARCOAL TINTED CONCRETE (75 & 77 MACDOUGAL)
 CHARCOAL TINTED CONCRETE & 2" THICK CALEDONIA GRANITE (73 MACDOUGAL)

OVERALL SIDEWALK LOOKING NORTH



EXISTING MATERIALS:
 UNTINTED CONCRETE & MISSOURI RED ¾" THICK GRANITE (73 MACDOUGAL)
 UNTINTED CONCRETE (75 & 77 MACDOUGAL)

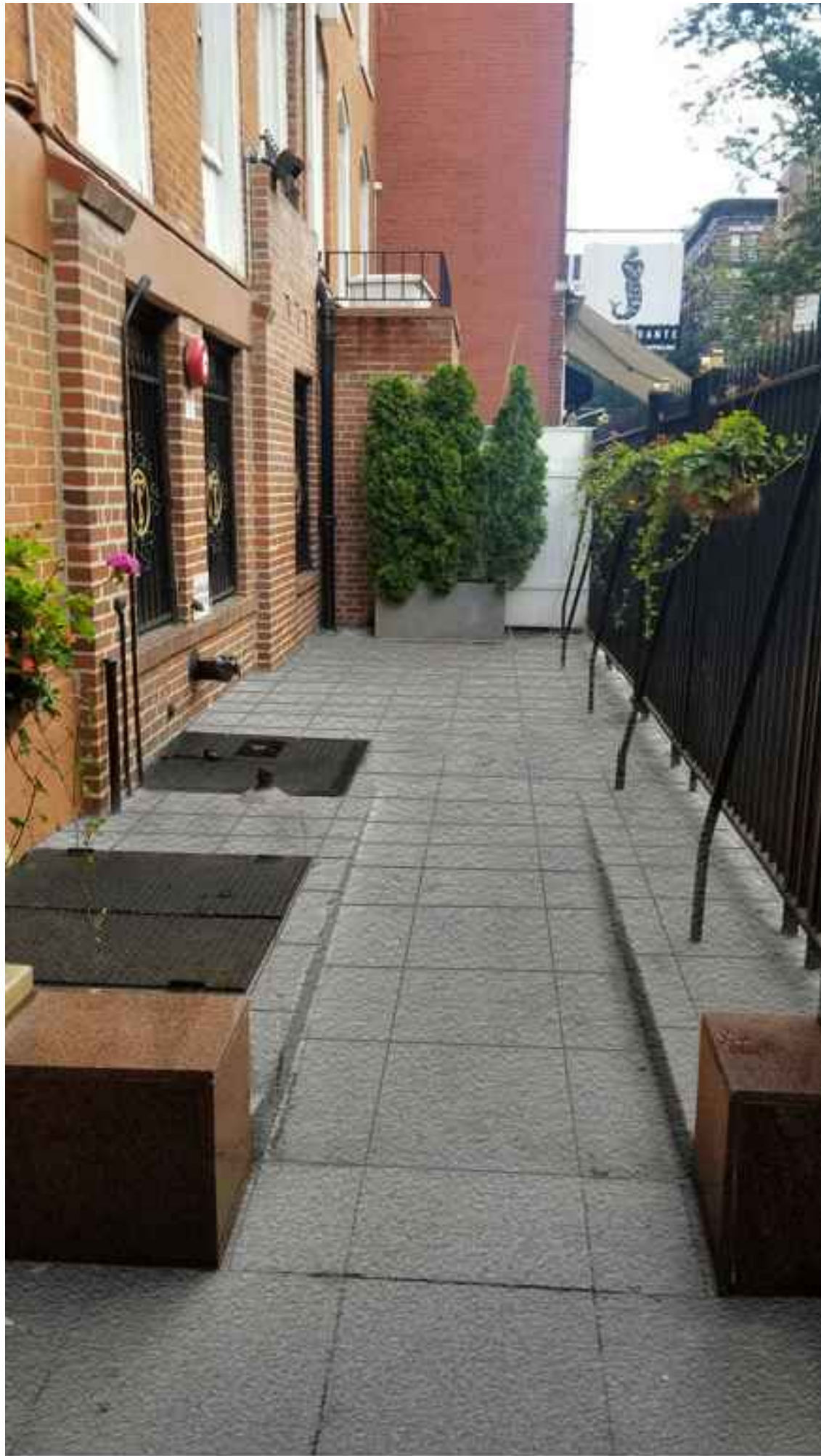


NEW MATERIALS:
 CHARCOAL TINTED CONCRETE & 2" THICK CALEDONIA GRANITE (73 MACDOUGAL)
 CHARCOAL TINTED CONCRETE (75 & 77 MACDOUGAL)

OVERALL SIDEWALK LOOKING SOUTH



EXISTING MATERIALS:
 PAINTED CONCRETE & MISSOURI RED ¾" GRANITE (73 MACDOUGAL)
 PAINTED CONCRETE (75 & 77 MACDOUGAL)



NEW MATERIALS:
 2" THICK CALEDONIA GRANITE (73 & 75 MACDOUGAL)
 CHARCOAL TINTED CONCRETE (77 MACDOUGAL)

PATIO LOOKING NORTH