



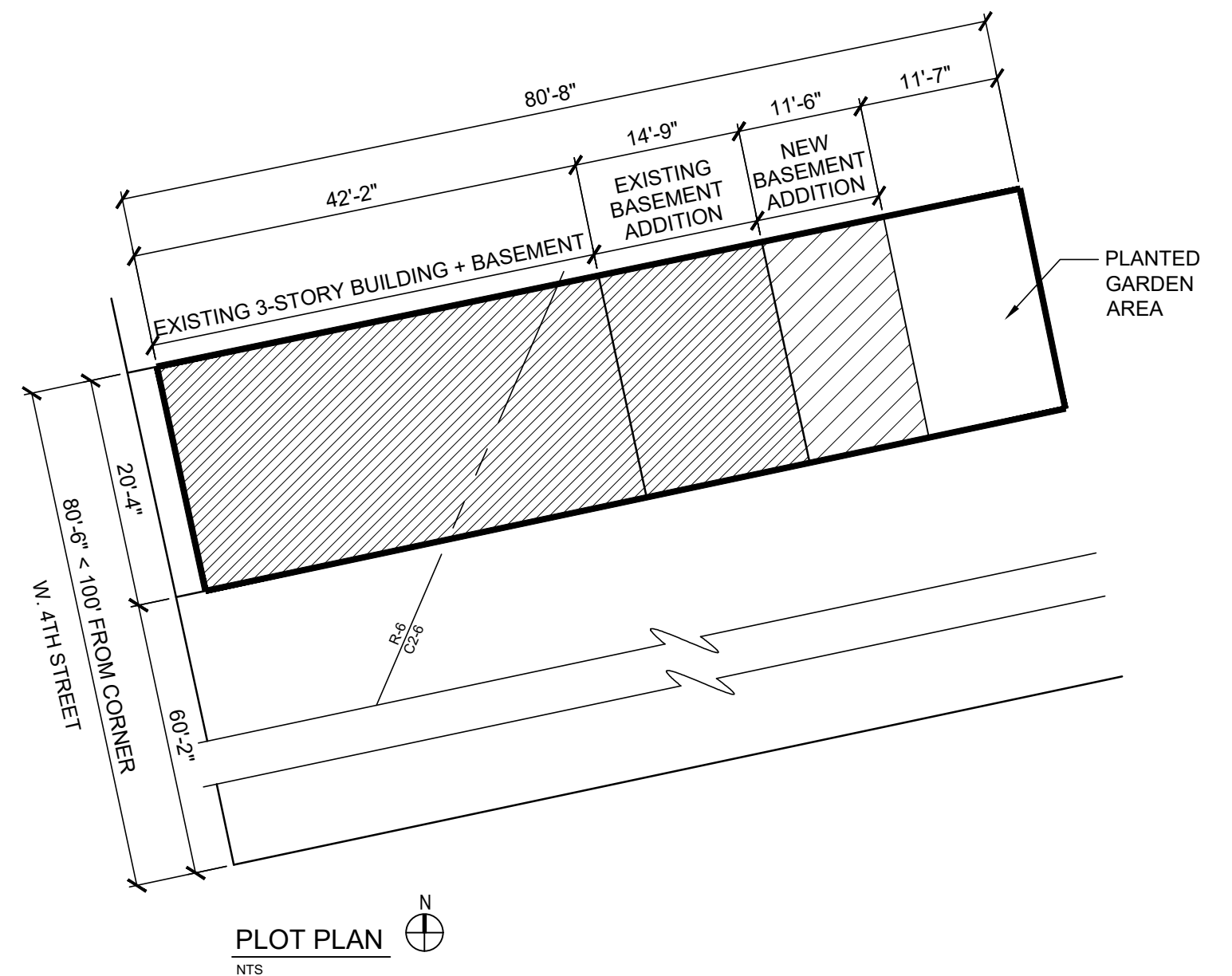
EXISTING FRONT ELEVATION (NO CHANGE)

## 239 WEST 4TH STREET

ALTA INDELMAN, ARCHITECT 451 BROOME STREET NEW YORK NY 10013 TEL. (212) 219-1774

### SCOPE OF WORK:

NEW REAR ADDITION AT BASEMENT LEVEL.



EXISTING FRONT ELEVATION **A00.1**

NO SCALE 10.4.2019

# Greenwich Village

This map of Greenwich Village, New York City, displays a grid of streets. A red line outlines a specific area within the neighborhood. A black dot and arrow point to the location of the New York Public Library, situated at the intersection of 4th Street and 5th Avenue. The map includes various street names such as Little W 12 St, W 13 St, Gansevoort St, Horatio St, Jane St, Bethune St, Bank St, W 11 St, Perry St, Charles St, Christopher St, Grove St, Commerce St, Jones St, Cornelia St, Leroy St, Carmine St, Downing St, W Houston St, W 14 St, W 15 St, W 16 St, W 17 St, W 18 St, W 19 St, E 14 St, E 13 St, E 12 St, E 11 St, E 10 St, E 9 St, E 8 St, W 4 St, W 3 St, W 2 St, W 1 St, W 10 St, W 9 St, W 8 St, W 7 St, W 6 St, W 5 St, W 4 St, W 3 St, W 2 St, W 1 St, E 14 St, E 13 St, E 12 St, E 11 St, E 10 St, E 9 St, E 8 St, E 7 St, E 6 St, E 5 St, E 4 St, E 3 St, E 2 St, E 1 St, E 0 St, E -1 St, E -2 St, E -3 St, E -4 St, E -5 St, E -6 St, E -7 St, E -8 St, E -9 St, E -10 St, E -11 St, E -12 St, E -13 St, E -14 St, E -15 St, E -16 St, E -17 St, E -18 St, E -19 St, E -20 St, E -21 St, E -22 St, E -23 St, E -24 St, E -25 St, E -26 St, E -27 St, E -28 St, E -29 St, E -30 St, E -31 St, E -32 St, E -33 St, E -34 St, E -35 St, E -36 St, E -37 St, E -38 St, E -39 St, E -40 St, E -41 St, E -42 St, E -43 St, E -44 St, E -45 St, E -46 St, E -47 St, E -48 St, E -49 St, E -50 St, E -51 St, E -52 St, E -53 St, E -54 St, E -55 St, E -56 St, E -57 St, E -58 St, E -59 St, E -60 St, E -61 St, E -62 St, E -63 St, E -64 St, E -65 St, E -66 St, E -67 St, E -68 St, E -69 St, E -70 St, E -71 St, E -72 St, E -73 St, E -74 St, E -75 St, E -76 St, E -77 St, E -78 St, E -79 St, E -80 St, E -81 St, E -82 St, E -83 St, E -84 St, E -85 St, E -86 St, E -87 St, E -88 St, E -89 St, E -90 St, E -91 St, E -92 St, E -93 St, E -94 St, E -95 St, E -96 St, E -97 St, E -98 St, E -99 St, E -100 St, E -101 St, E -102 St, E -103 St, E -104 St, E -105 St, E -106 St, E -107 St, E -108 St, E -109 St, E -110 St, E -111 St, E -112 St, E -113 St, E -114 St, E -115 St, E -116 St, E -117 St, E -118 St, E -119 St, E -120 St, E -121 St, E -122 St, E -123 St, E -124 St, E -125 St, E -126 St, E -127 St, E -128 St, E -129 St, E -130 St, E -131 St, E -132 St, E -133 St, E -134 St, E -135 St, E -136 St, E -137 St, E -138 St, E -139 St, E -140 St, E -141 St, E -142 St, E -143 St, E -144 St, E -145 St, E -146 St, E -147 St, E -148 St, E -149 St, E -150 St, E -151 St, E -152 St, E -153 St, E -154 St, E -155 St, E -156 St, E -157 St, E -158 St, E -159 St, E -160 St, E -161 St, E -162 St, E -163 St, E -164 St, E -165 St, E -166 St, E -167 St, E -168 St, E -169 St, E -170 St, E -171 St, E -172 St, E -173 St, E -174 St, E -175 St, E -176 St, E -177 St, E -178 St, E -179 St, E -180 St, E -181 St, E -182 St, E -183 St, E -184 St, E -185 St, E -186 St, E -187 St, E -188 St, E -189 St, E -190 St, E -191 St, E -192 St, E -193 St, E -194 St, E -195 St, E -196 St, E -197 St, E -198 St, E -199 St, E -200 St, E -201 St, E -202 St, E -203 St, E -204 St, E -205 St, E -206 St, E -207 St, E -208 St, E -209 St, E -210 St, E -211 St, E -212 St, E -213 St, E -214 St, E -215 St, E -216 St, E -217 St, E -218 St, E -219 St, E -220 St, E -221 St, E -222 St, E -223 St, E -224 St, E -225 St, E -226 St, E -227 St, E -228 St, E -229 St, E -230 St, E -231 St, E -232 St, E -233 St, E -234 St, E -235 St, E -236 St, E -237 St, E -238 St, E -239 St, E -240 St, E -241 St, E -242 St, E -243 St, E -244 St, E -245 St, E -246 St, E -247 St, E -248 St, E -249 St, E -250 St, E -251 St, E -252 St, E -253 St, E -254 St, E -255 St, E -256 St, E -257 St, E -258 St, E -259 St, E -260 St, E -261 St, E -262 St, E -263 St, E -264 St, E -265 St, E -266 St, E -267 St, E -268 St, E -269 St, E -270 St, E -271 St, E -272 St, E -273 St, E -274 St, E -275 St, E -276 St, E -277 St, E -278 St, E -279 St, E -280 St, E -281 St, E -282 St, E -283 St, E -284 St, E -285 St, E -286 St, E -287 St, E -288 St, E -289 St, E -290 St, E -291 St, E -292 St, E -293 St, E -294 St, E -295 St, E -296 St, E -297 St, E -298 St, E -299 St, E -300 St, E -301 St, E -302 St, E -303 St, E -304 St, E -305 St, E -306 St, E -307 St, E -308 St, E -309 St, E -310 St, E -311 St, E -312 St, E -313 St, E -314 St, E -315 St, E -316 St, E -317 St, E -318 St, E -319 St, E -320 St, E -321 St, E -322 St, E -323 St, E -324 St, E -325 St, E -326 St, E -327 St, E -328 St, E -329 St, E -330 St, E -331 St, E -332 St, E -333 St, E -334 St, E -335 St, E -336 St, E -337 St, E -338 St, E -339 St, E -340 St, E -341 St, E -342 St, E -343 St, E -344 St, E -345 St, E -346 St, E -347 St, E -348 St, E -349 St, E -350 St, E -351 St, E -352 St, E -353 St, E -354 St, E -355 St, E -356 St, E -357 St, E -358 St, E -359 St, E -360 St, E -361 St, E -362 St, E -363 St, E -364 St, E -365 St, E -366 St, E -367 St, E -368 St, E -369 St, E -370 St, E -371 St, E -372 St, E -373 St, E -374 St, E -375 St, E -376 St, E -377 St, E -378 St, E -379 St, E -380 St, E -381 St, E -382 St, E -383 St, E -384 St, E -385 St, E -386 St, E -387 St, E -388 St, E -389 St, E -390 St, E -391 St, E -392 St, E -393 St, E -394 St, E -395 St, E -396 St, E -397 St, E -398 St, E -399 St, E -400 St, E -401 St, E -402 St, E -403 St, E -404 St, E -405 St, E -406 St, E -407 St, E -408 St, E -409 St, E -410 St, E -411 St, E -412 St, E -413 St, E -414 St, E -415 St, E -416 St, E -417 St, E -418 St, E -419 St, E -420 St, E -421 St, E -422 St, E -423 St, E -424 St, E -425 St, E -426 St, E -427 St, E -428 St, E -429 St, E -430 St, E -431 St, E -432 St, E -433 St, E -434 St, E -435 St, E -436 St, E -437 St, E -438 St, E -439 St, E -440 St, E -441 St, E -442 St, E -443 St, E -444 St, E -445 St, E -446 St, E -447 St, E -448 St, E -449 St, E -450 St, E -451 St, E -452 St, E -453 St, E -454 St, E -455 St, E -456 St, E -457 St, E -458 St, E -459 St, E -460 St, E -461 St, E -462 St, E -463 St, E -464 St, E -465 St, E -466 St, E -467 St, E -468 St, E -469 St, E -470 St, E -471 St, E -472 St, E -473 St, E -474 St, E -475 St, E -476 St, E -477 St, E -478 St, E -479 St, E -480 St, E -481 St, E -482 St, E -483 St, E -484 St, E -485 St, E -486 St, E -487 St, E -488 St, E -489 St, E -490 St, E -491 St, E -492 St, E -493 St, E -494 St, E -495 St, E -496 St, E -497 St, E -498 St, E -499 St, E -500 St, E -501 St, E -502 St, E -503 St, E -504 St, E -505 St, E -506 St, E -507 St, E -508 St, E -509 St, E -510 St, E -511 St, E -512 St, E -513 St, E -514 St, E -515 St, E -516 St, E -517 St, E -518 St, E -519 St, E -520 St, E -521 St, E -522 St, E -523 St, E -524 St, E -525 St, E -526 St, E -527 St, E -528 St, E -529 St, E -530 St, E -531 St, E -532 St, E -533 St, E -534 St, E -535 St, E -536 St, E -537 St, E -538 St, E -539 St, E -540 St, E -54







EXISTING REAR ELEVATION



RENDERING OF  
PROPOSED NEW ADDITION

**239 WEST 4TH STREET**

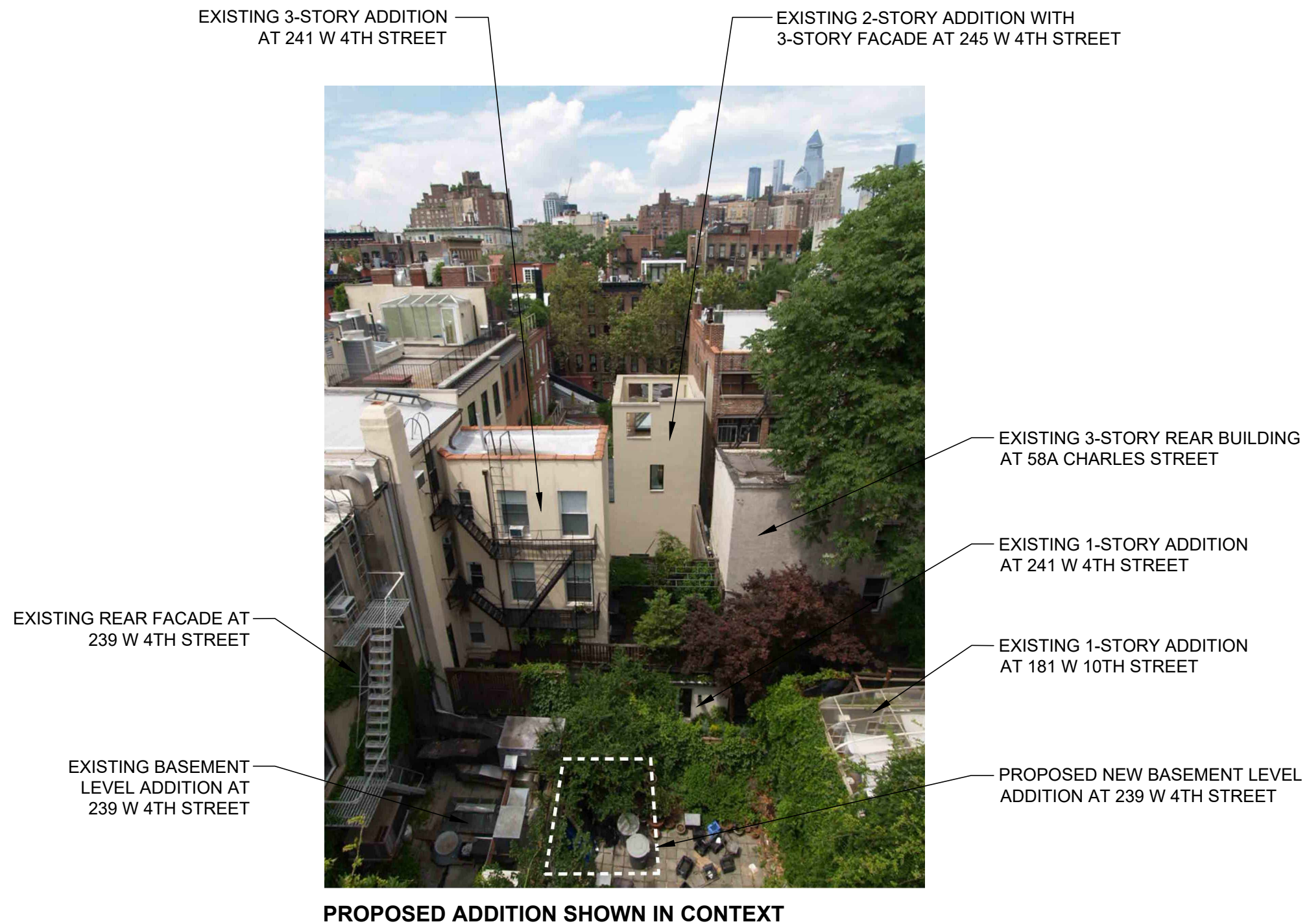
ALTA INDELMAN, ARCHITECT 451 BROOME STREET NEW YORK NY 10013 TEL. (212) 219-1774

REAR ELEVATION **A01**

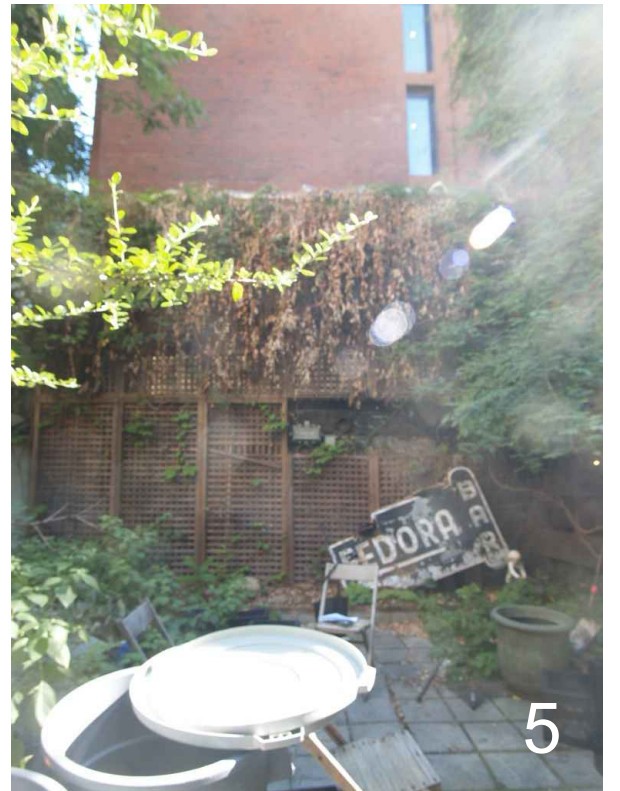
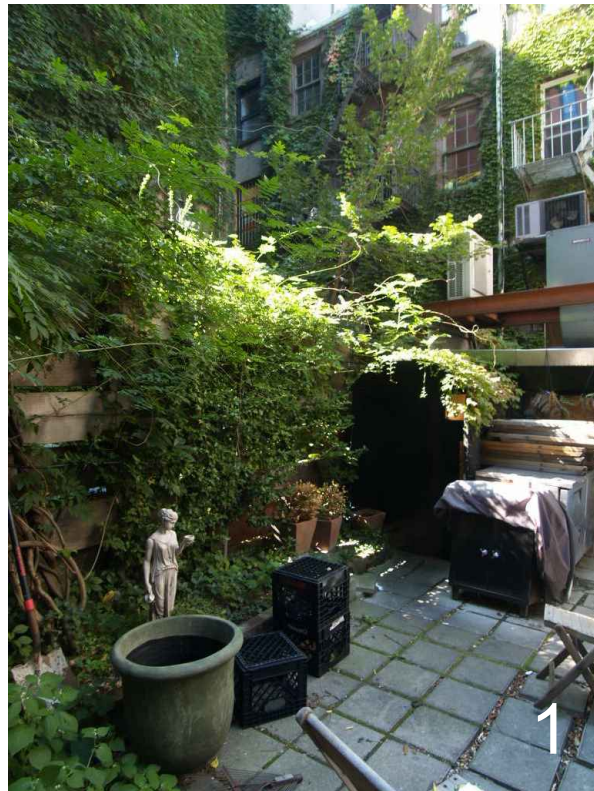
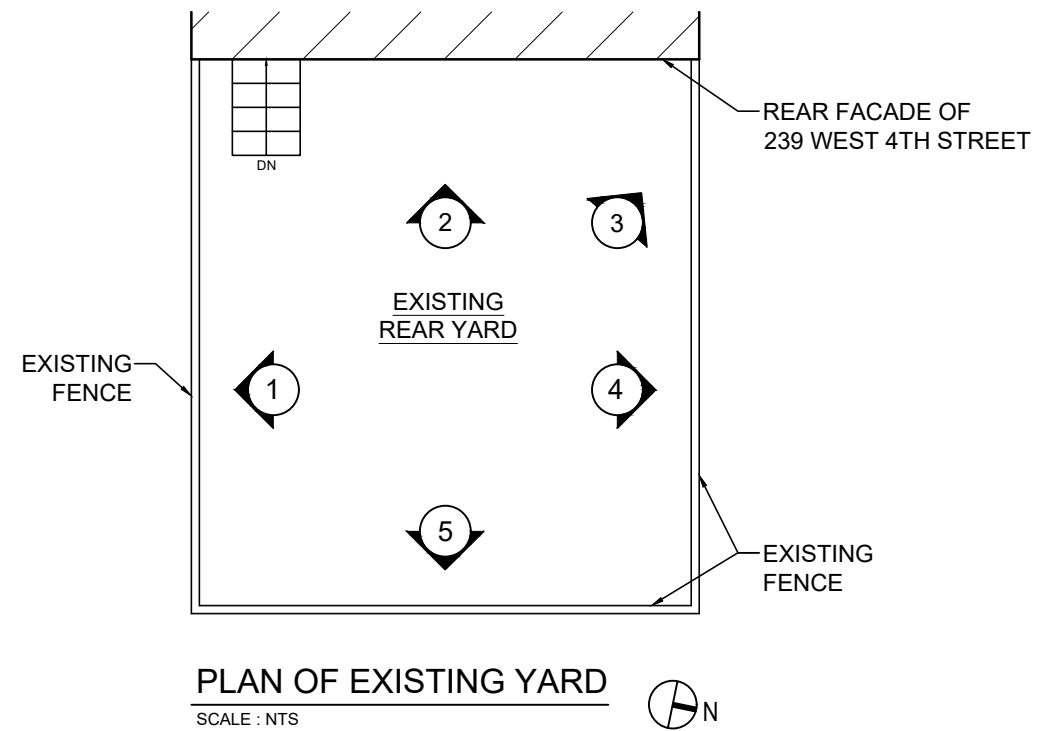
NO SCALE 10.4.2019









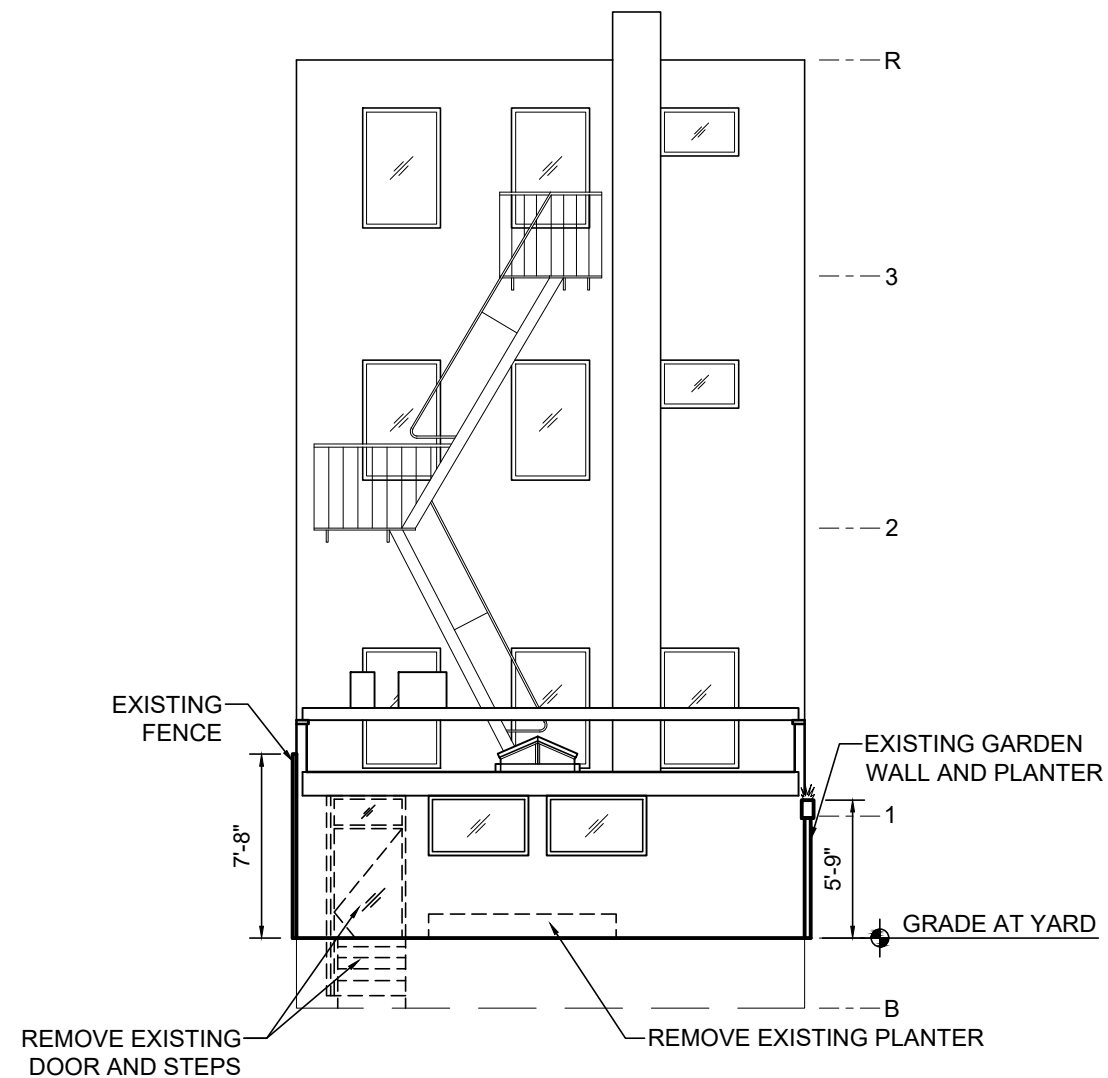


## 239 WEST 4TH STREET

ALTA INDELMAN, ARCHITECT 451 BROOME STREET NEW YORK NY 10013 TEL. (212) 219-1774

## EXISTING YARD **A04**

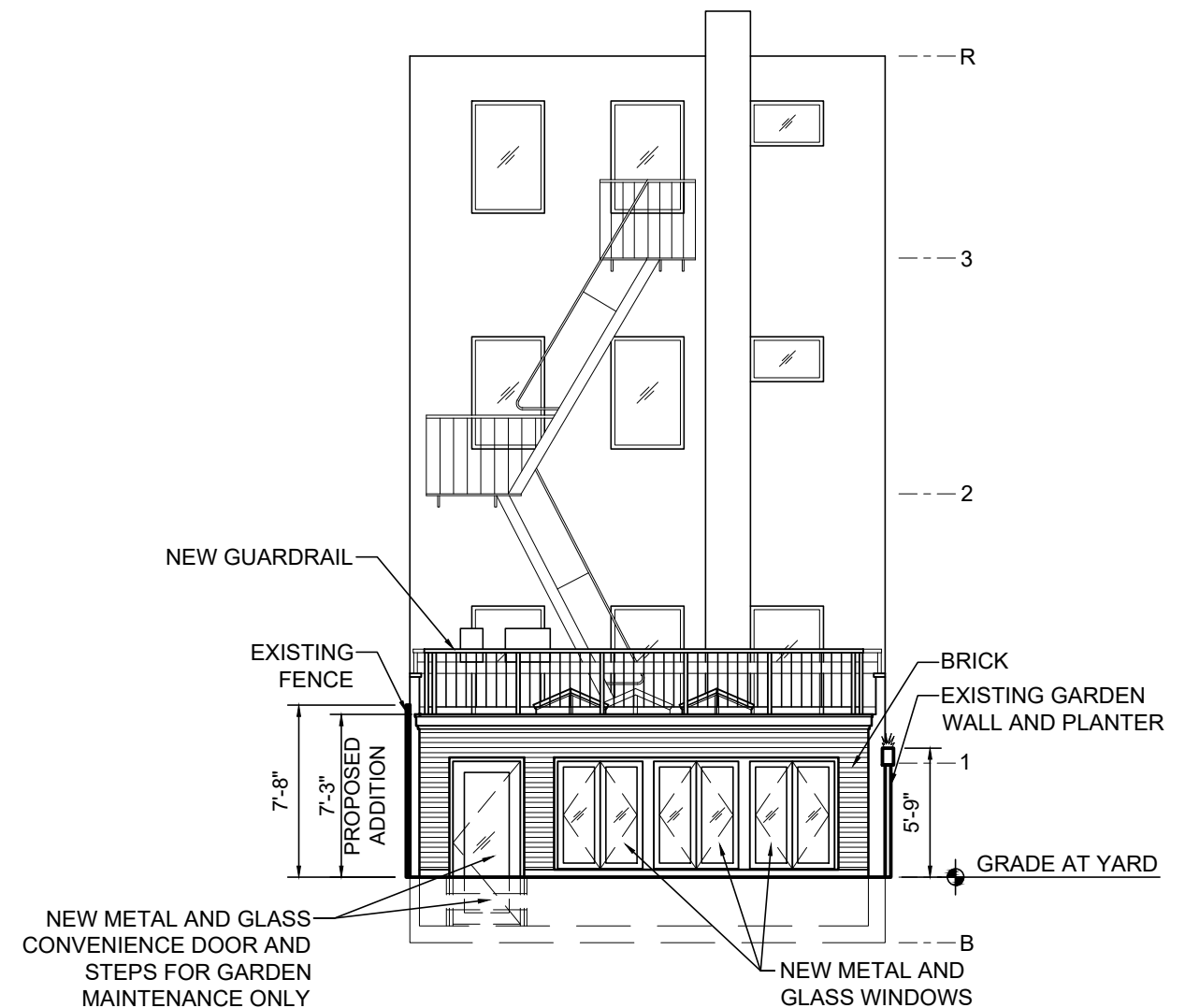
SCALE: 1/8" = 1'-0" 10.4.2019



EXISTING REAR ELEVATION

2 (SHOWING DEMOLITION)

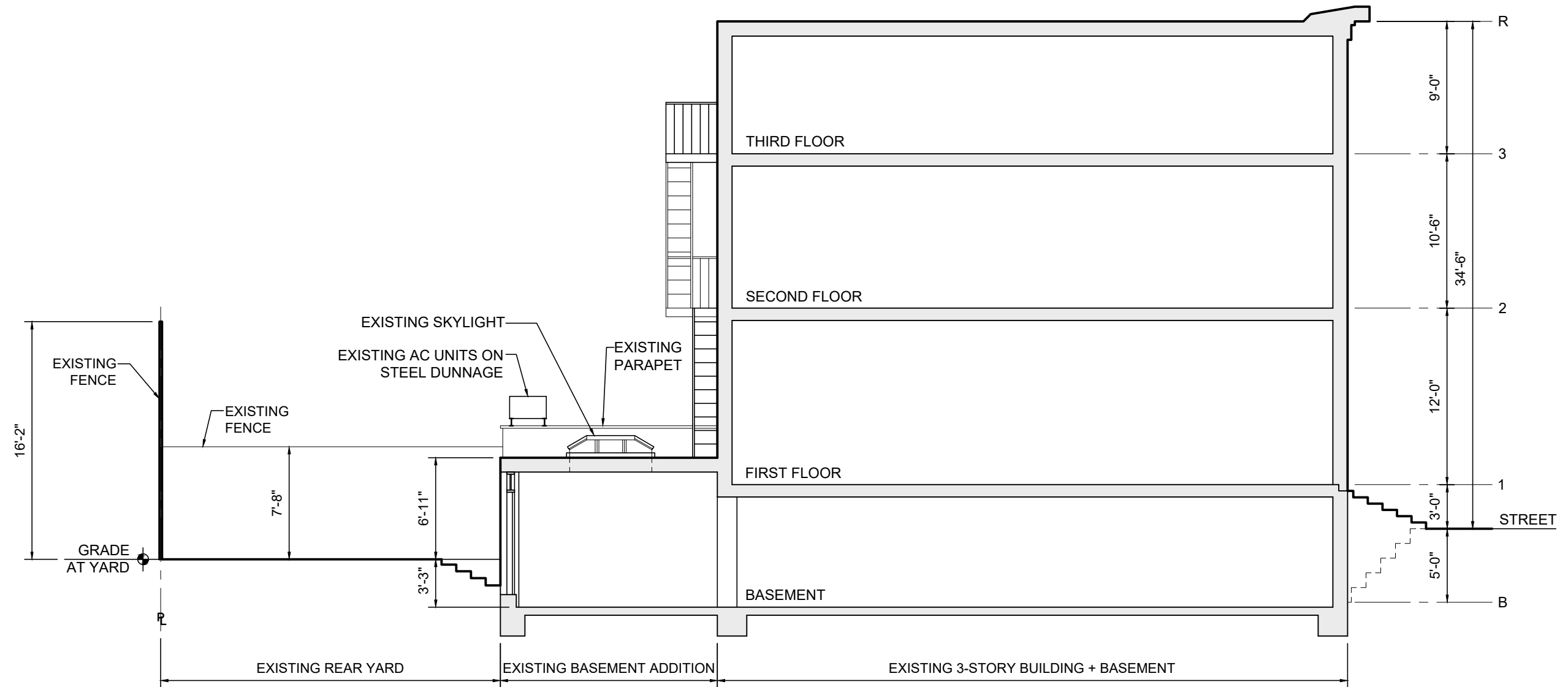
SCALE : 1/8" = 1'-0"



1 PROPOSED REAR ELEVATION

SCALE : 1/8" = 1'-0"





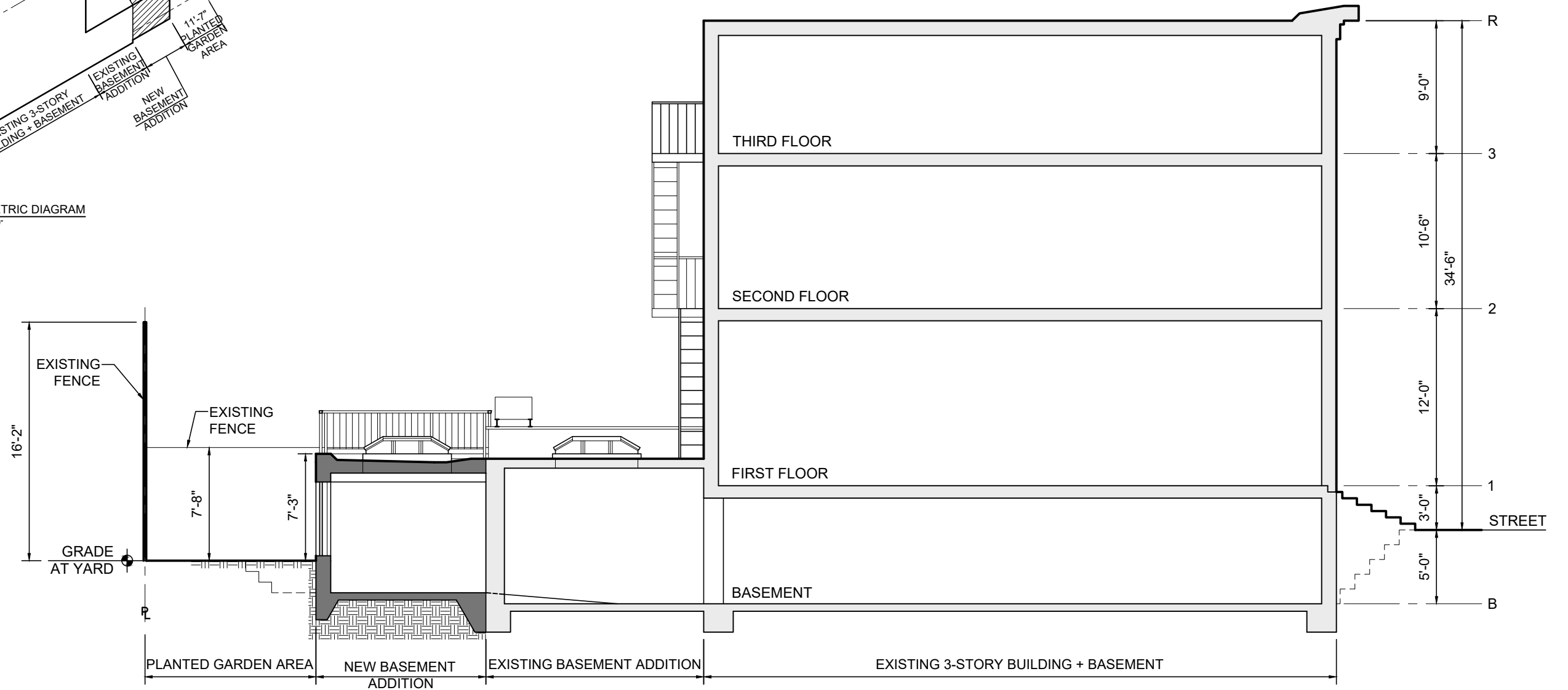
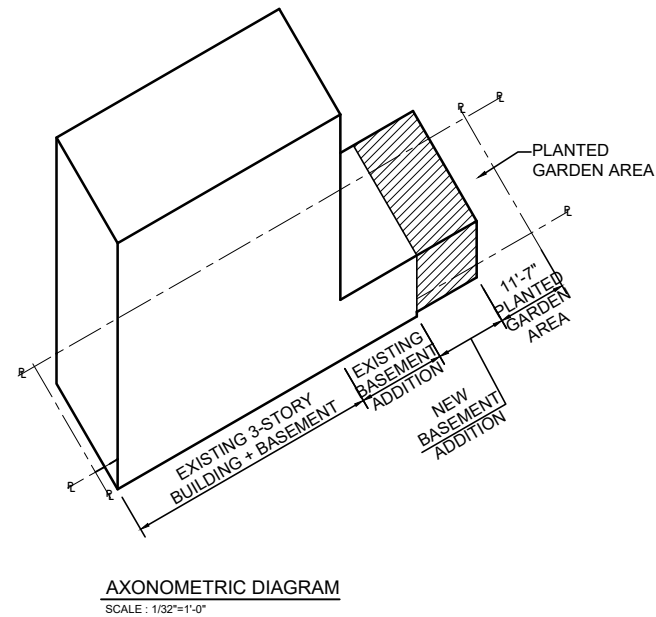
LEGEND

EXISTING

EXISTING BUILDING SECTION

SCALE : 1/8" = 1'-0"





LEGEND

EXISTING

PROPOSED

239 WEST 4TH STREET

ALTA INDELMAN, ARCHITECT 451 BROOME STREET NEW YORK NY 10013 TEL. (212) 219-1774

EXISTING AND PROPOSED SECTIONS **A07**

SCALE: VARIES 10.4.2019

