

# Jane Street Triangle



# Existing Conditions



Existing View looking south from 8<sup>th</sup> Ave



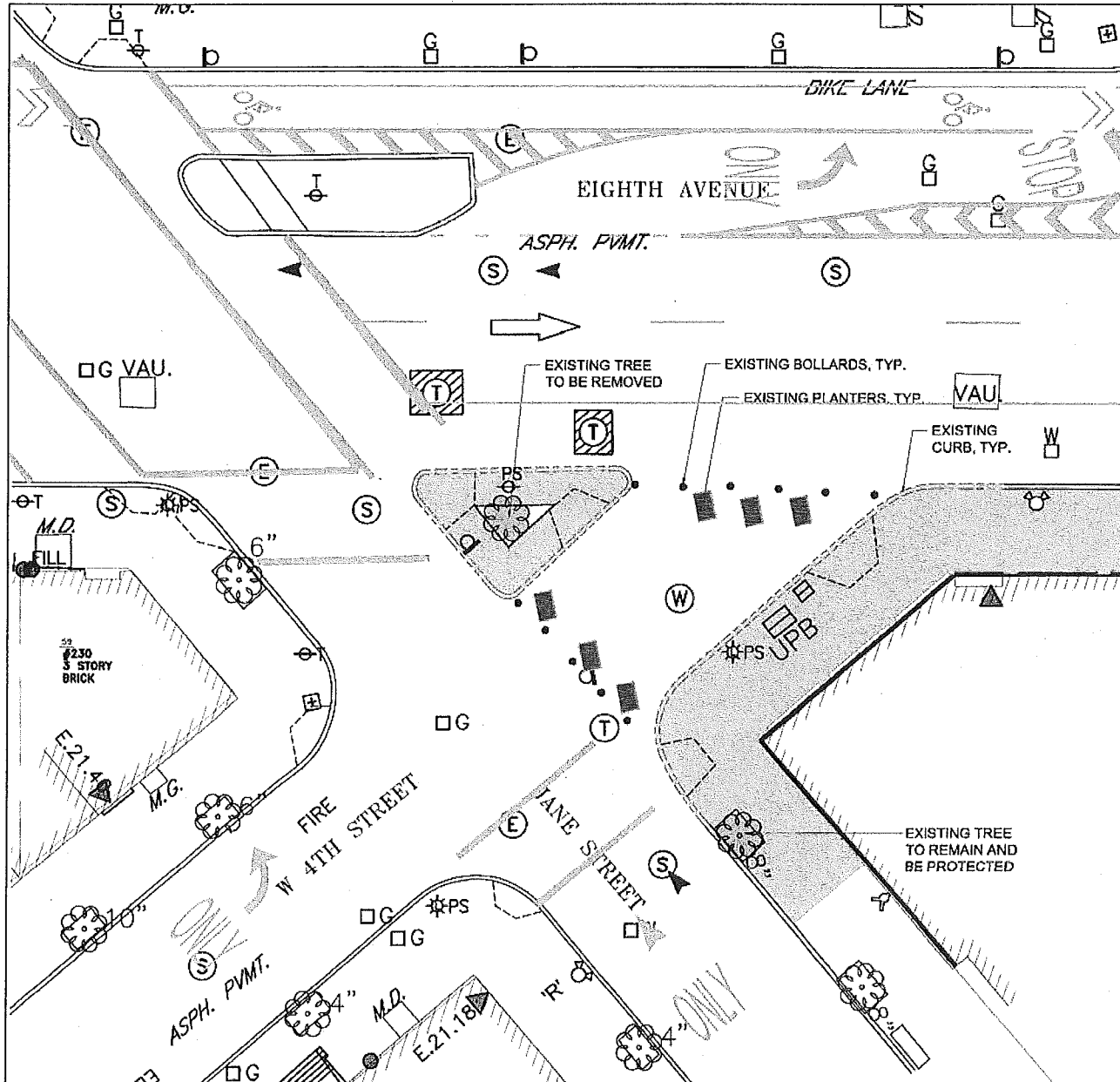
Existing View looking north from W 4<sup>th</sup> St

# Existing Conditions



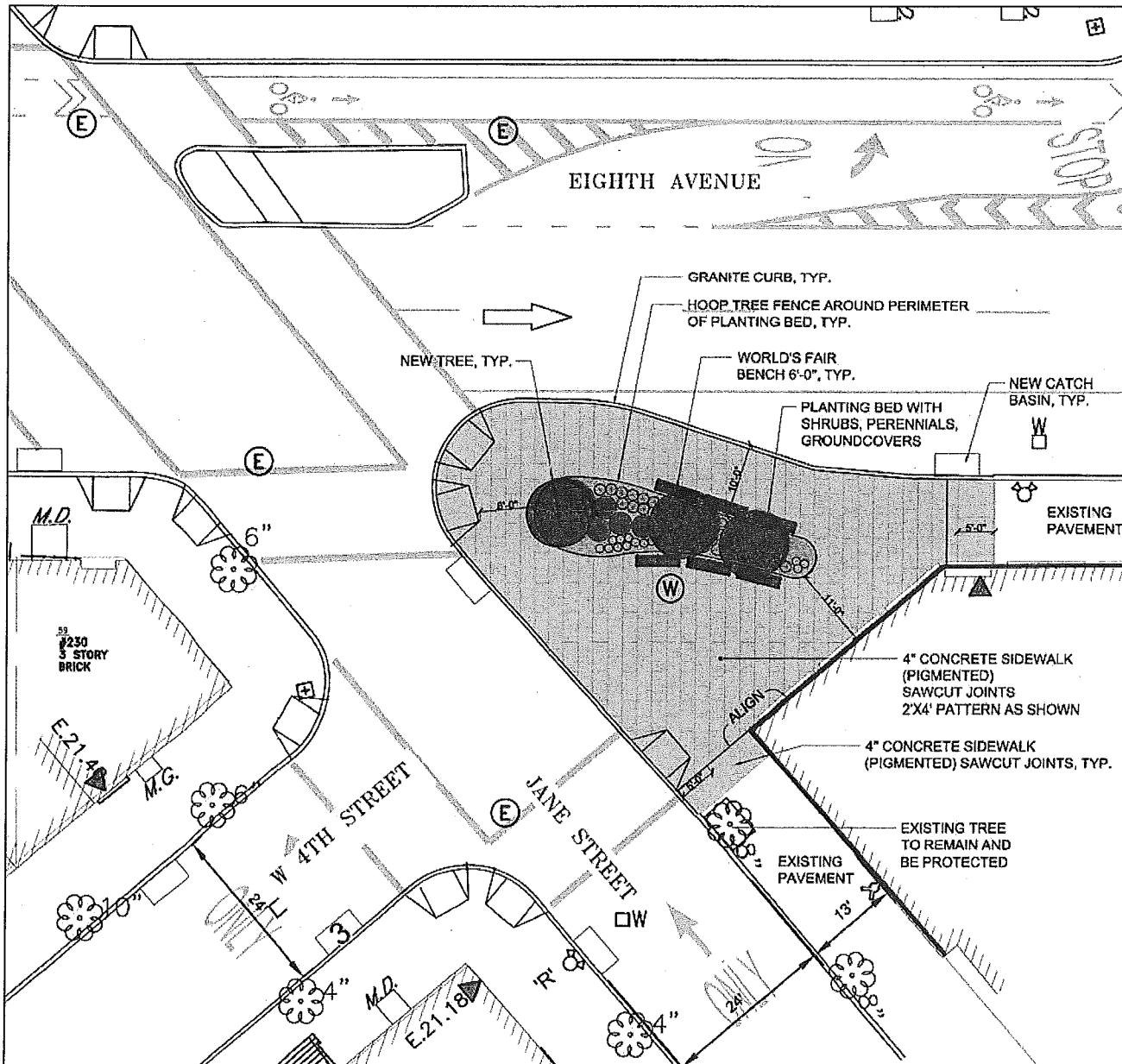
Existing View looking northeast from 8<sup>th</sup> Ave

# Existing Conditions Plan



- Lack of unified space
- Poor connections to adjacent sidewalks
- Vast amount of pavement
- Minimal space for pedestrians
- Lack of shade and seating

# Proposed Site Plan



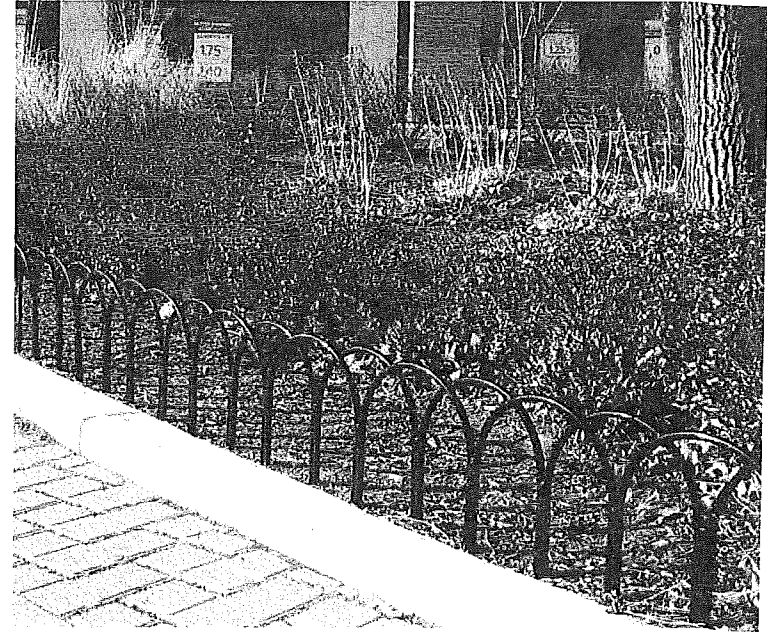
- Curb extension provides more space for pedestrians and improves safety
- Distinctive paving and planting bed defines space
- Planted buffer provides shade, stormwater capture, filters noise & provides respite
- Historic benches provide seating and viewing opportunities

**NOTE: Parks will maintain plantings under Greenstreet Program.**

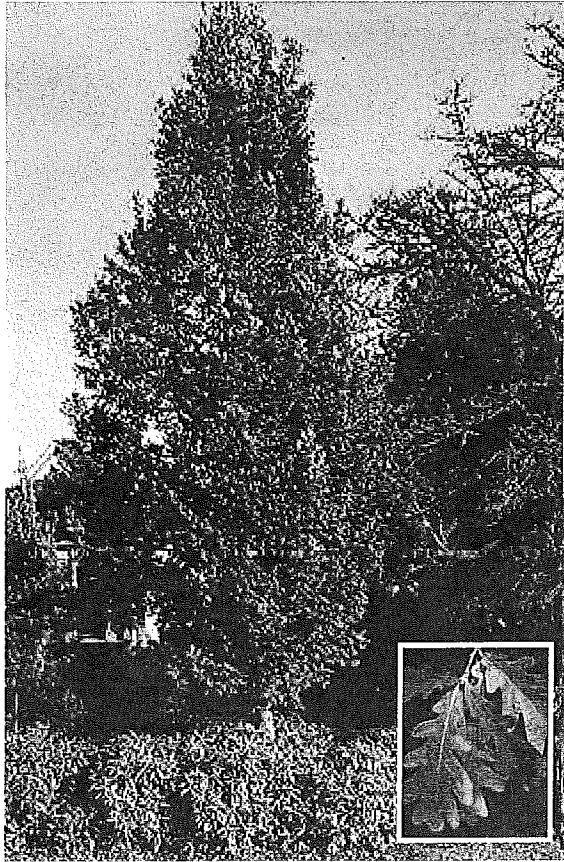
# Proposed Furnishings



1939 World's Fair Bench- 6'-0"



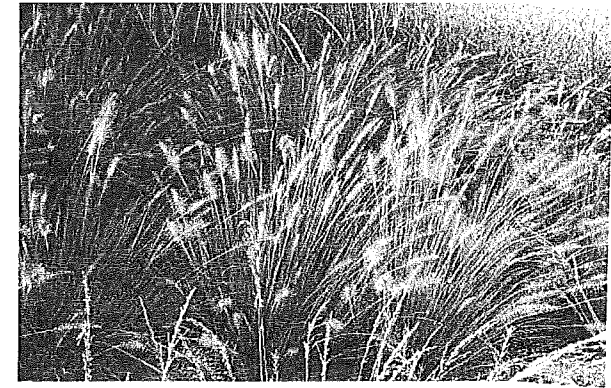
Fence around planting bed (no curb)



Crimson Spire Oak



Blue Princess Holly



Fountain Grass



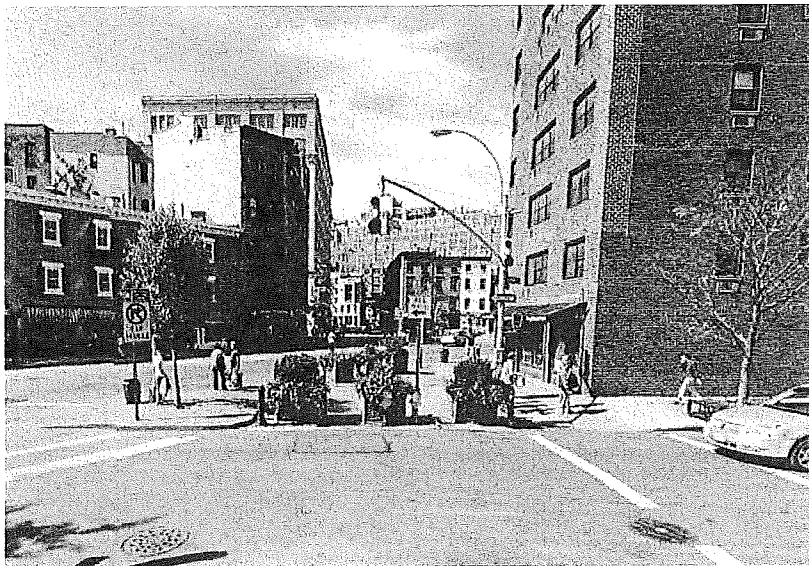
Purple Coneflower



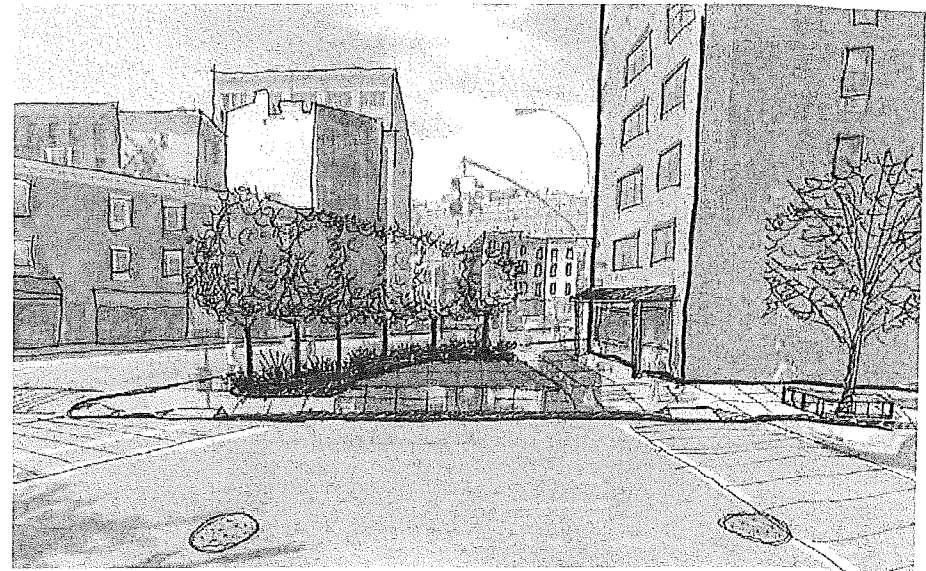
Liriope



# Concept Design Sketch: October 2010



Existing Conditions



Proposed Design Sketch