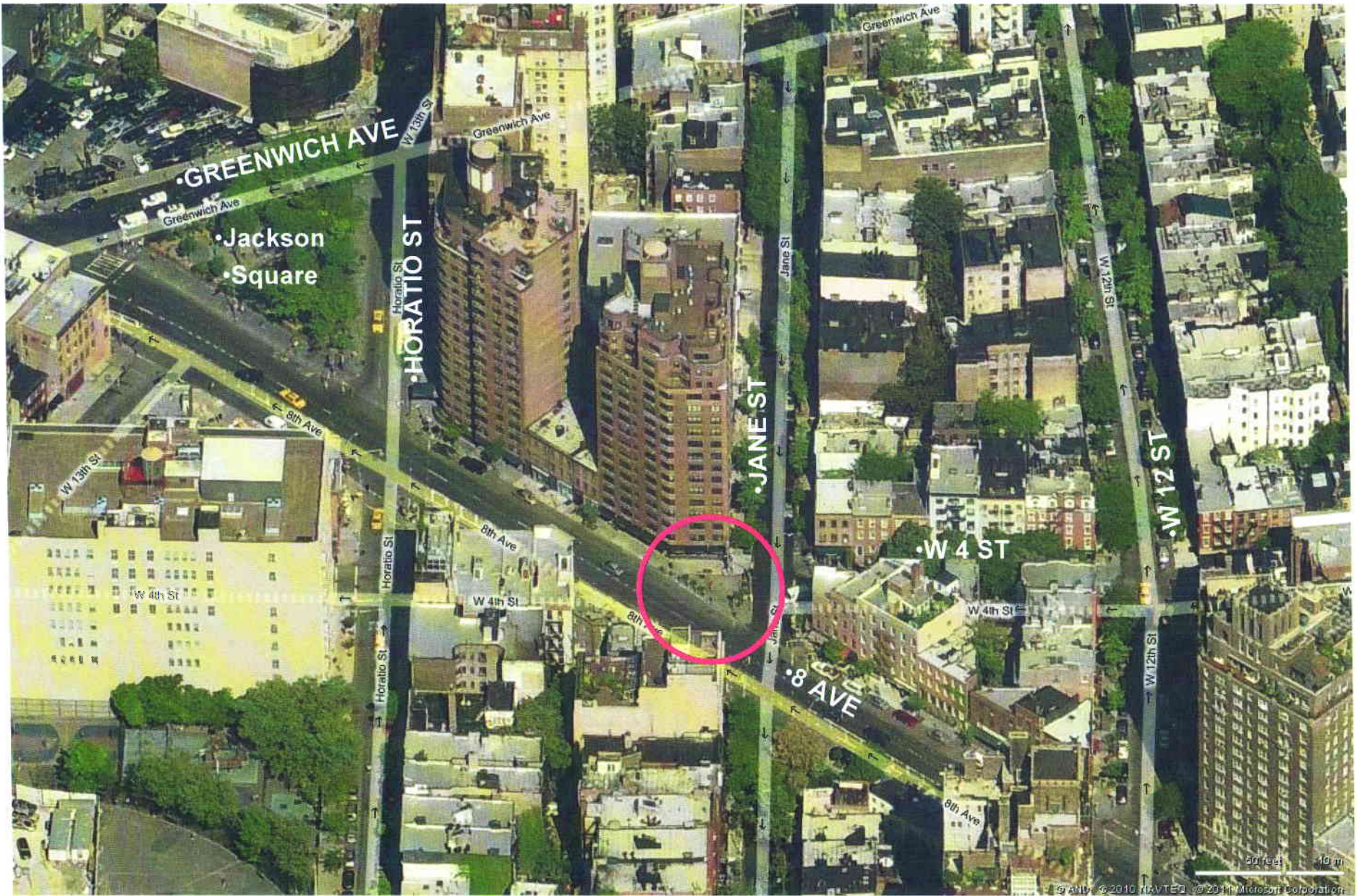


Jane Street Triangle



Existing Conditions



Existing View looking south from 8th Ave

Existing Conditions



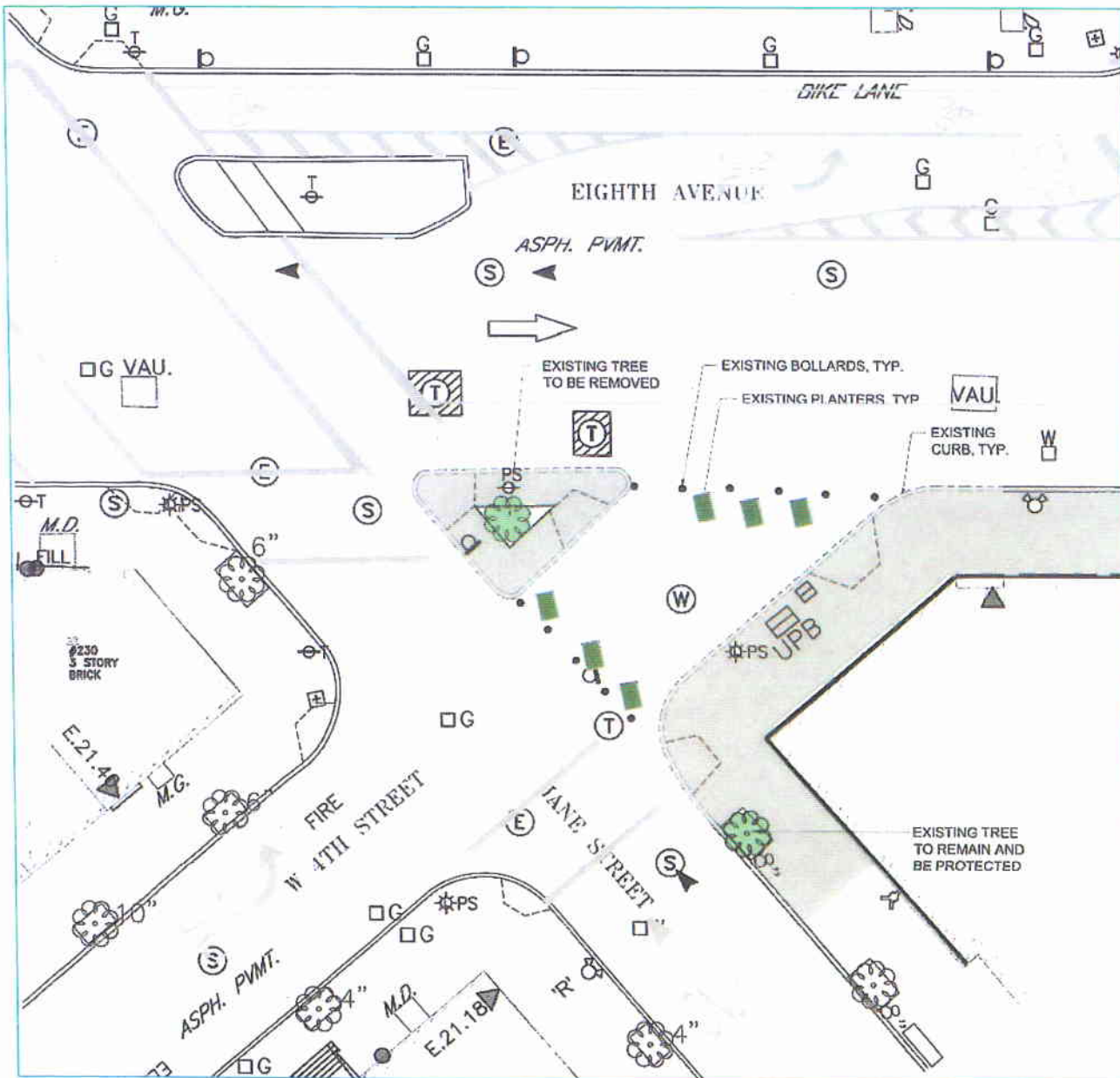
Existing View looking north from W 4th St

Existing Conditions



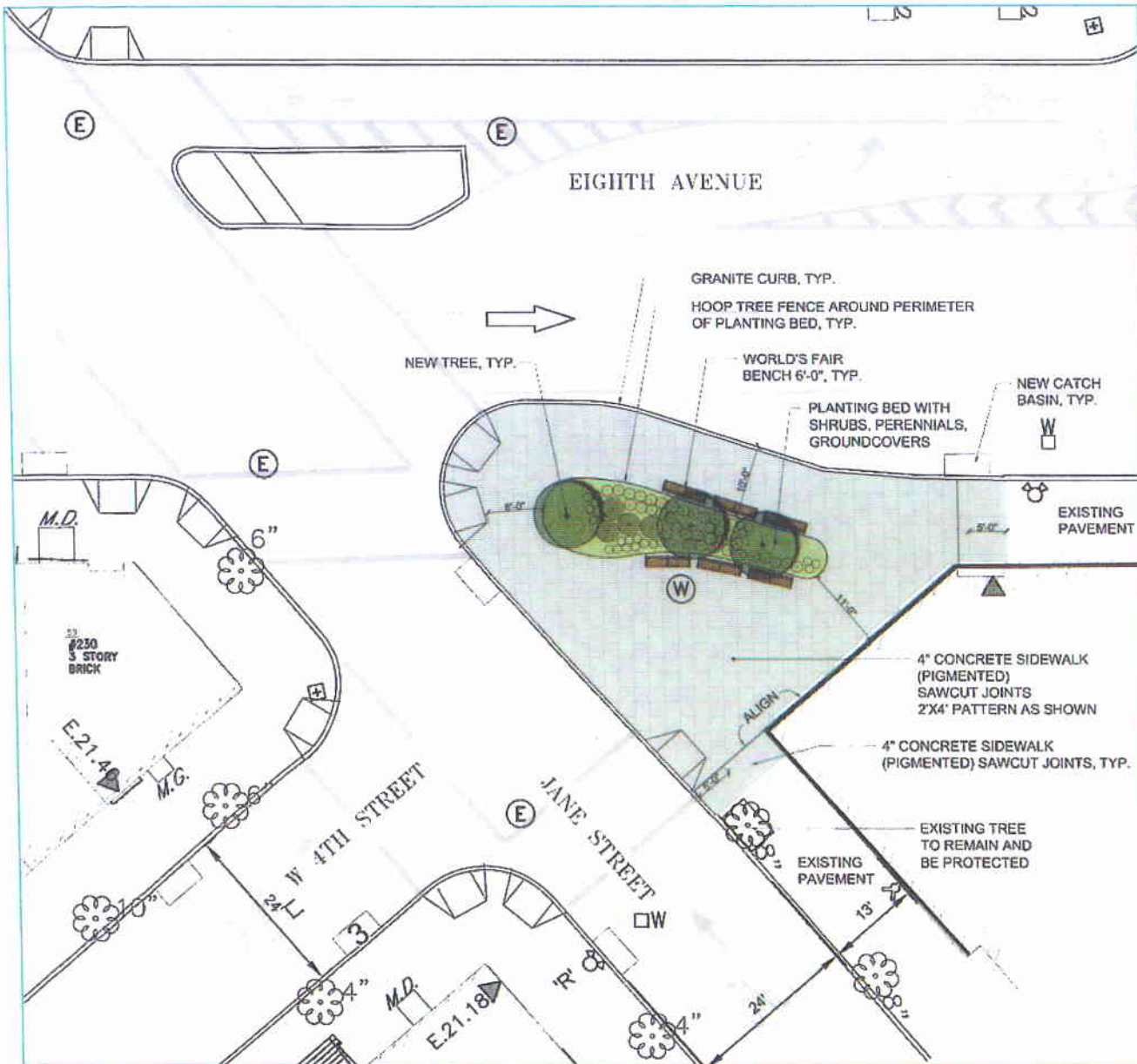
Existing View looking northeast from 8th Ave

Existing Conditions Plan



- Lack of unified space
- Poor connections to adjacent sidewalks
- Vast amount of pavement
- Minimal space for pedestrians
- Lack of shade and seating

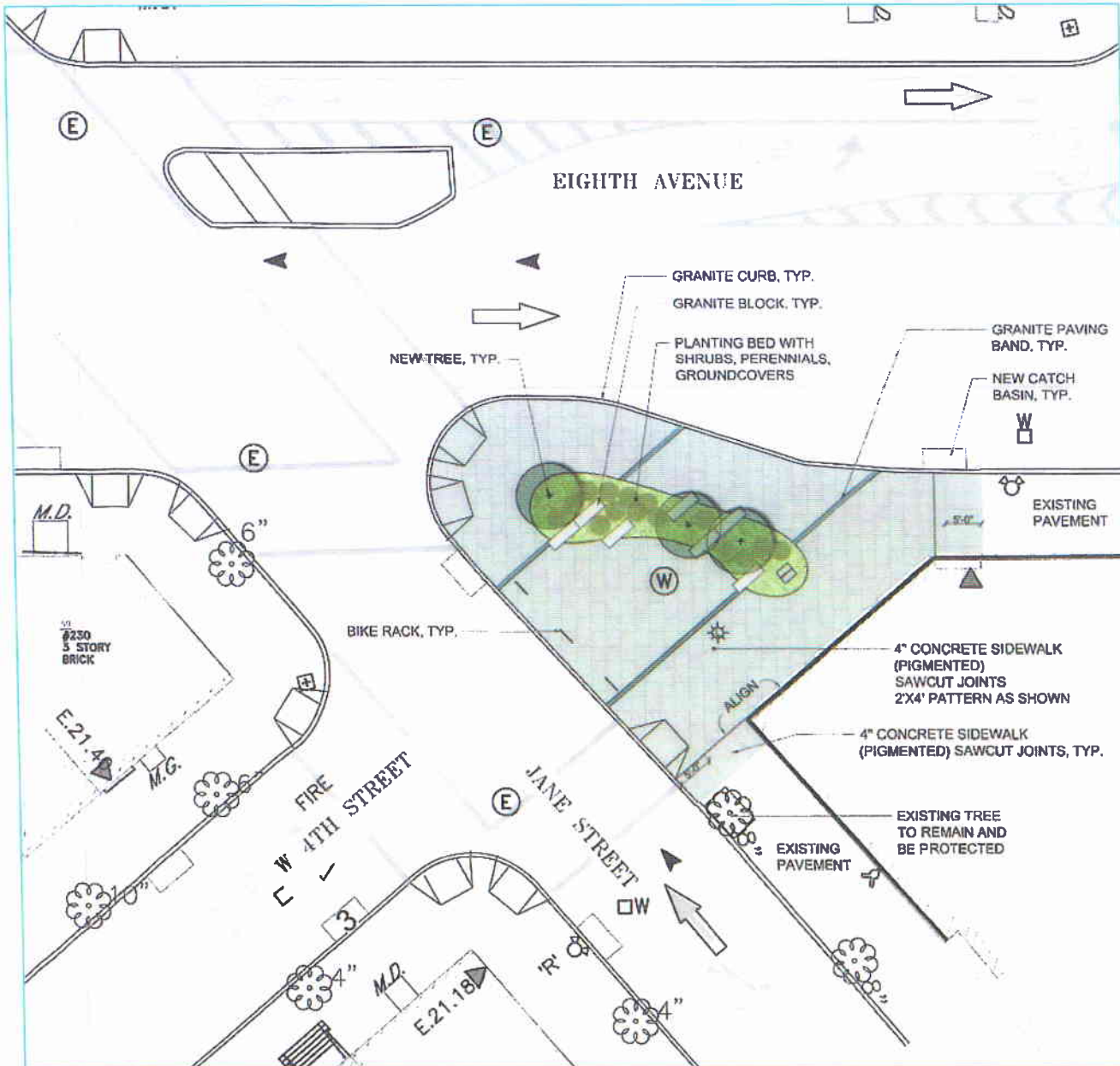
Proposed Site Plan :: 02.08.11



- Curb extension provides more space for pedestrians and improves safety
- Distinctive paving and planting bed defines space
- Planted buffer provides shade, stormwater capture, filters noise & provides respite
- Historic benches provide seating and viewing opportunities

NOTE: Parks will maintain plantings under Greenstreet Program.

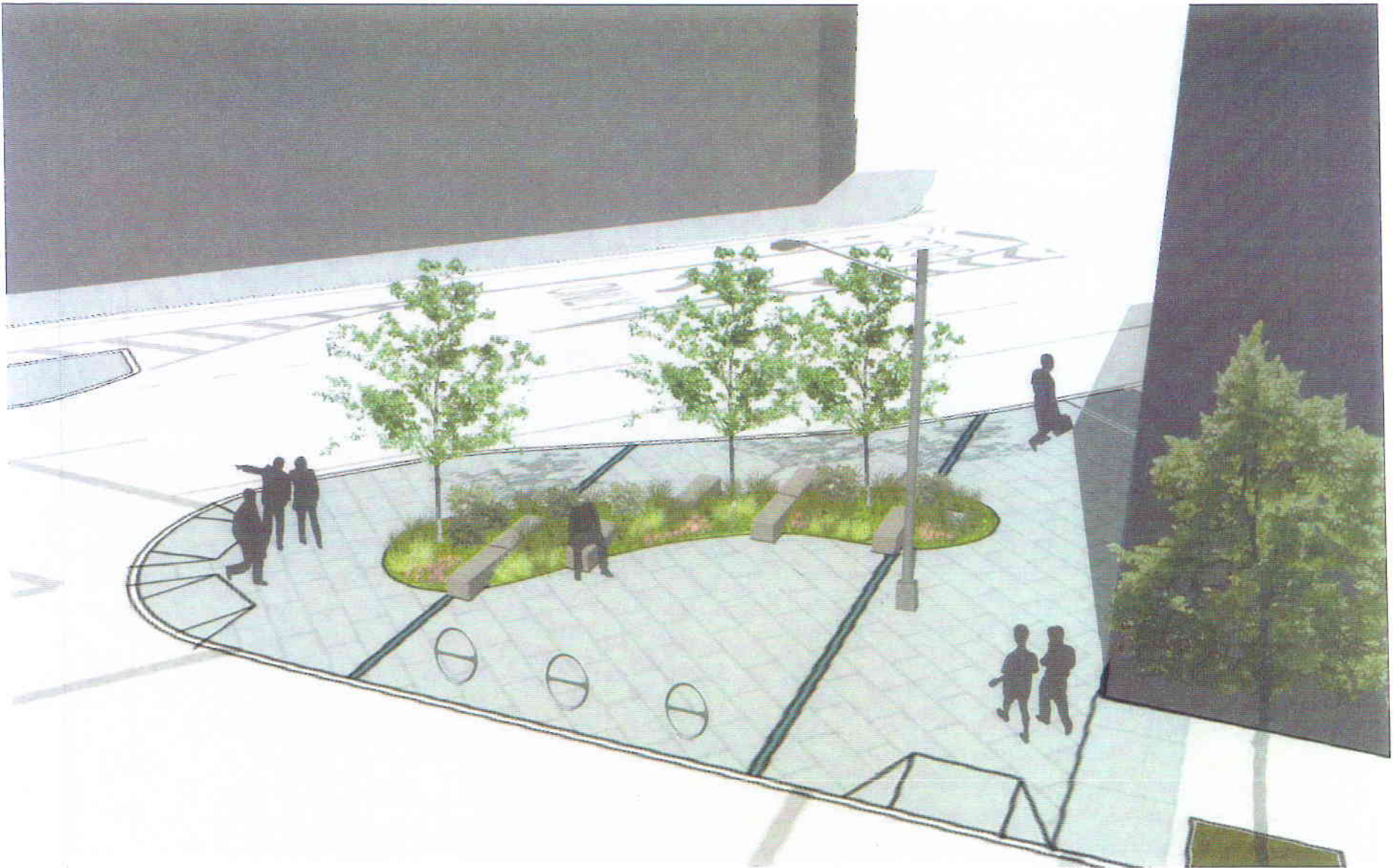
Proposed Site Plan



- Curb extension provides more space for pedestrians and improves safety
- Distinctive paving and planting bed defines space & references historic grid of W. 4th St.
- Plantings provide shade, maintains views, captures stormwater, filters noise & cleans air
- Granite blocks blend with the landscape, provide seating & evokes an organic feel within the plaza
- Bike racks provide parking & act as visual cue for motorists approaching from W. 4th St

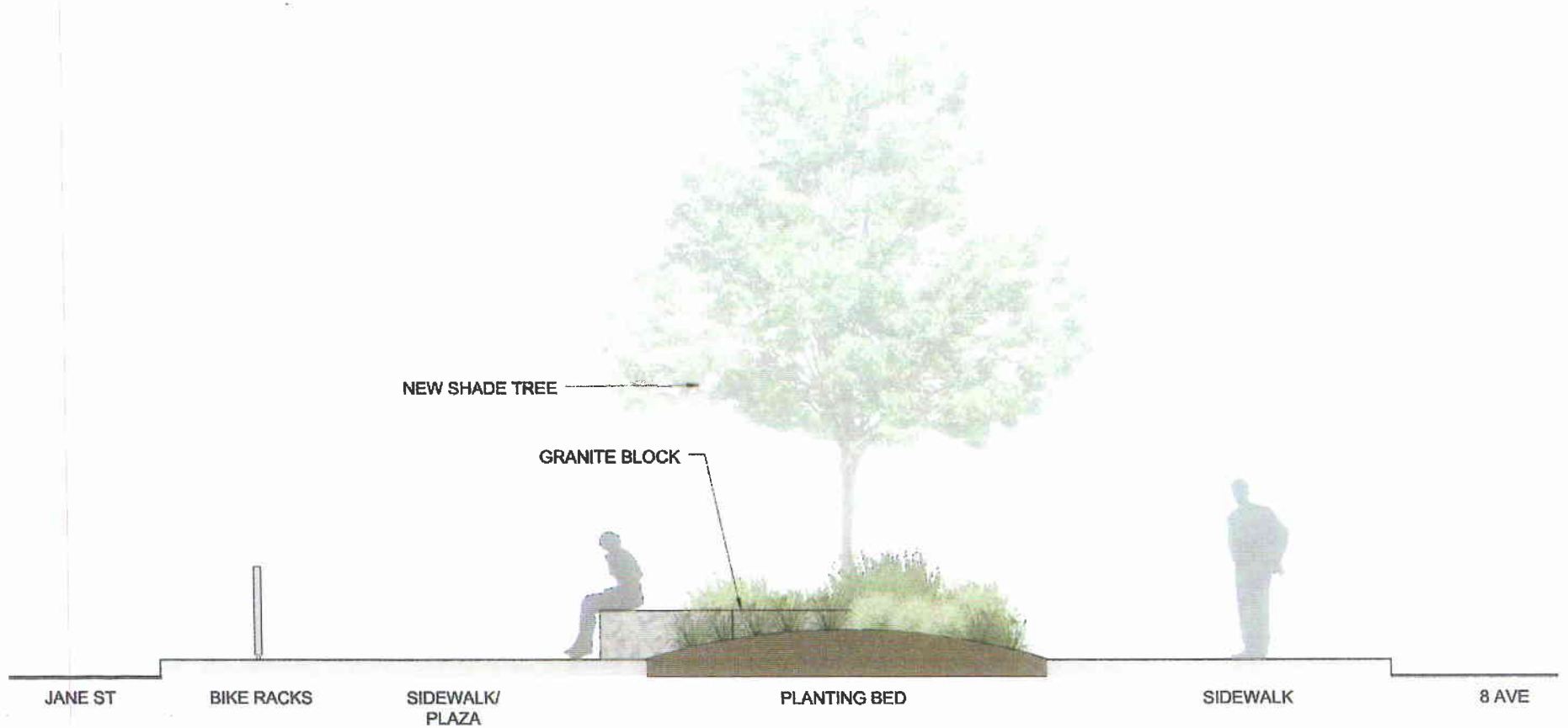
NOTE: Parks will maintain plantings under Greenstreet Program.

Proposed Rendering



Typical Elevation

Maintaining views, creating space and providing seating.....



Using native trees to define space, clean air and provide shade while maintaining views.....



Quercus bicolor (Swamp White Oak)



Nyssa sylvatica (Sour Gum)

Landscape ::: Shrubs, Grasses, Perennials

Using low-maintenance, native plants.....



Russian Sage and Purple Coneflower



Blue Princess Holly



Fountain Grass



Liriope

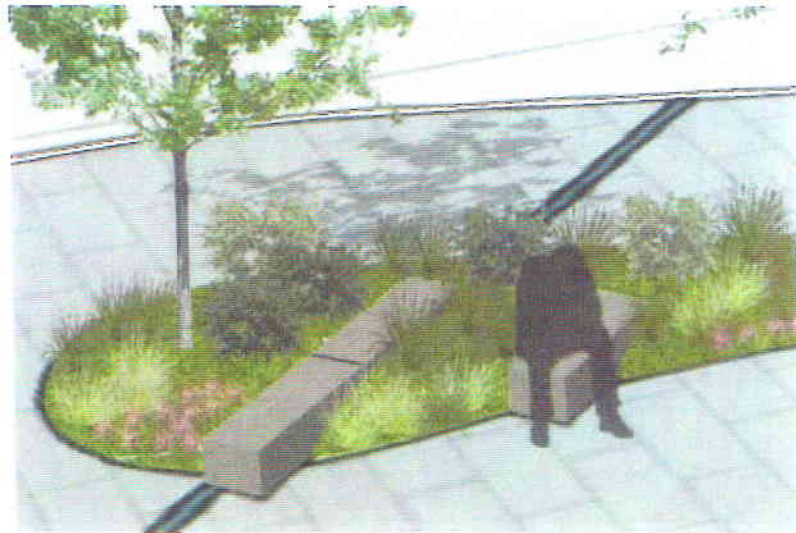


Daffodils

Integrating historic materials with the landscape.....



Granite Block



Perspective View



Precedent : Battery Bosque



Precedent : Gantry State Park

Using distinctive paving and reference to the historical street grid.....

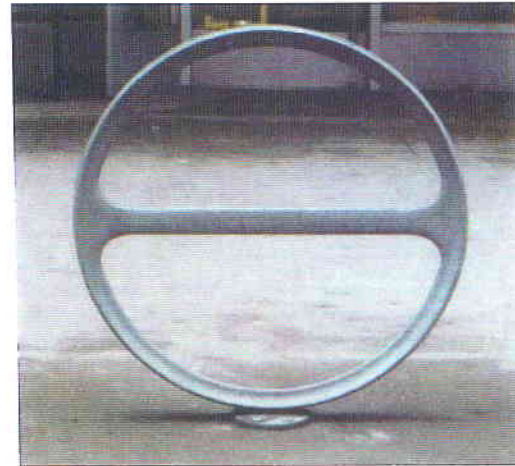


NYC DOT Standard Tinted Concrete



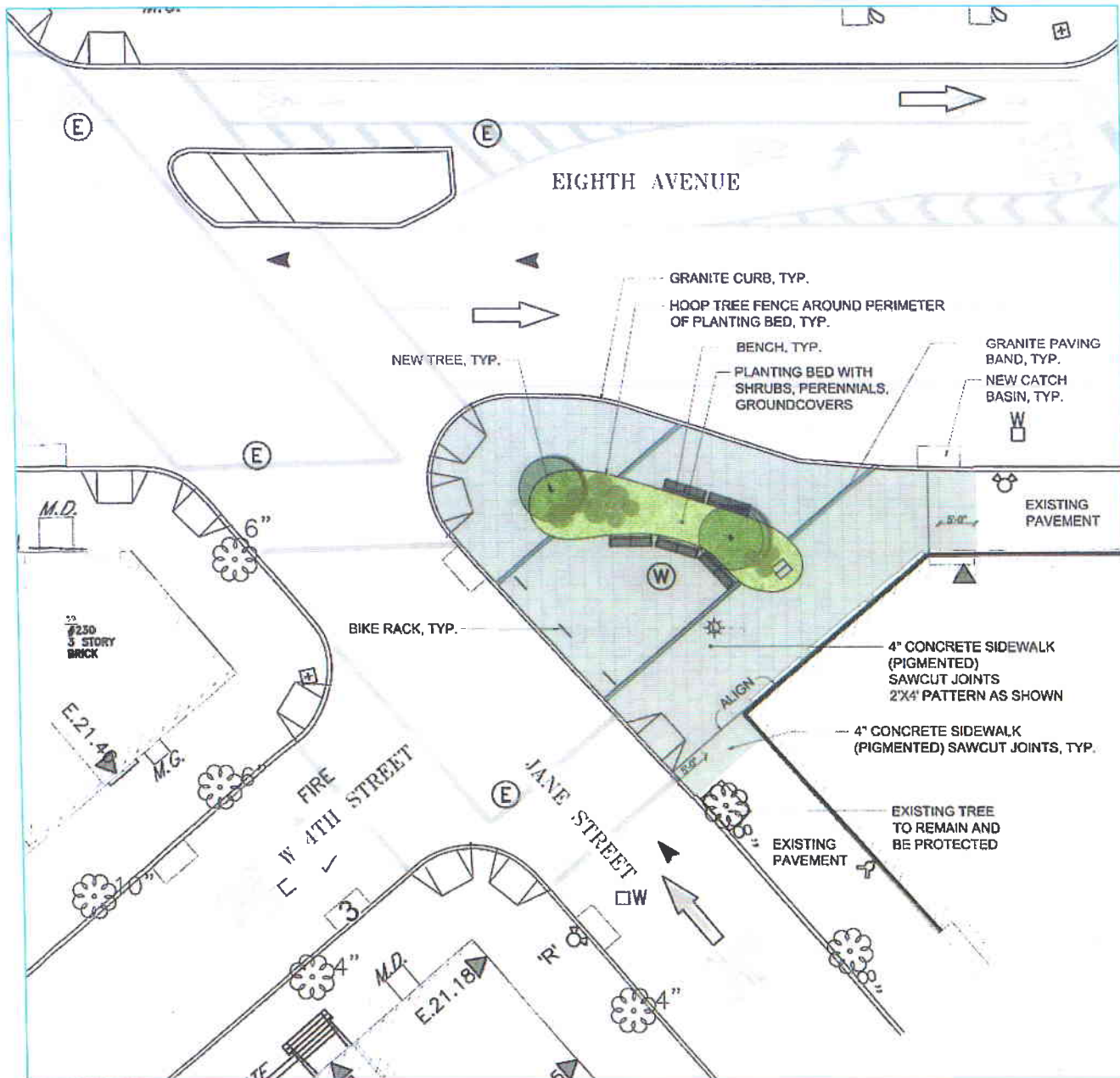
Granite Band

Providing bicycle parking and a visual cue for motorists.....



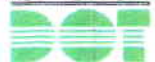
Times Square

Alternative Treatments

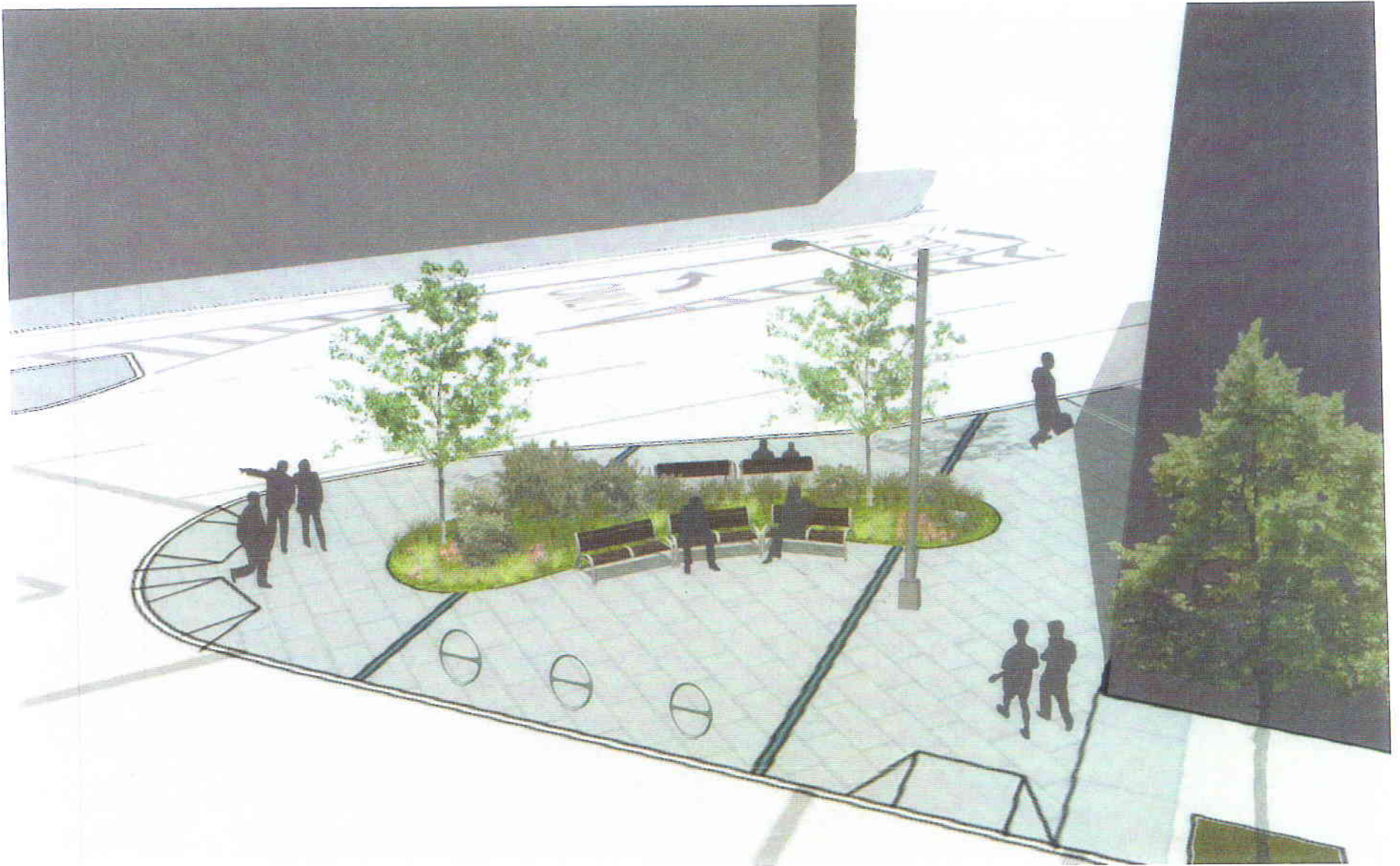


- Curb extension provides more space for pedestrians and improves safety
- Distinctive paving and planting bed defines space & references historic grid of W. 4th St.
- Plantings provide shade, maintains views, captures stormwater, filters noise & cleans air
- Historic benches provide seating and viewing opportunities
- Bike racks provide parking & act as visual cue for motorists approaching from W. 4th St

NOTE: Parks will maintain plantings under Greenstreet Program.



Alternative Treatments



Materials :: Benches



1964 World's Fair Bench- 6'-0"



1939 World's Fair Bench- 6'-0"



City Hall Bench- 6'-0"