

***Please note that all comments in red have been added by GVSHP

Proposed Emergency Ventilation Plant

for the

8th Avenue Subway Line

(between West 4th Street & 14th Street Stations)

and

7th Avenue Subway Line

(between Christopher Street & 14th Street Stations)

June 22, 2009

Background Information

To construct an emergency vent plant to serve the:

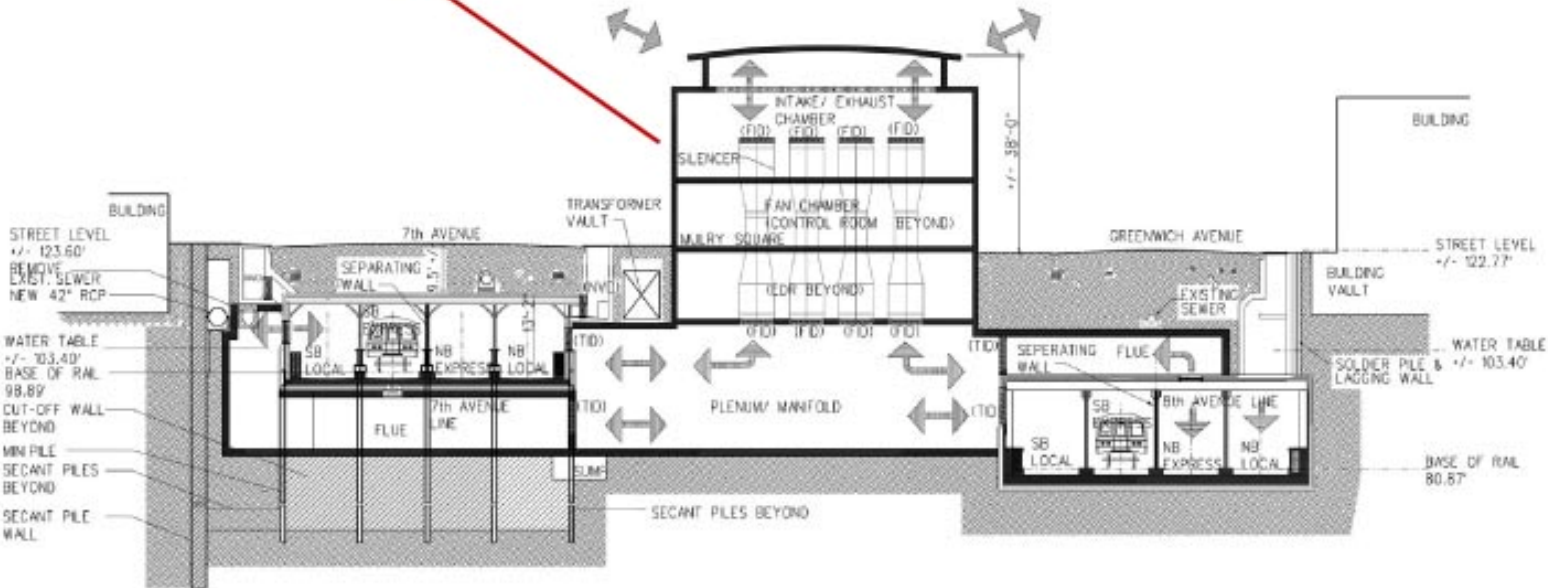
- Eighth Avenue Subway Line between the West 4th & 14th Street Stations, and to the extent feasible/cost-effective, also provide service to the:
- Seventh Avenue Subway Line between Christopher Street and 14th Street

Project Purpose & Need

- Emergency & Life Safety Requirements

Preliminary Conceptual Design Section

Only a portion of the structure will be above-ground. The height of this portion will not exceed 40 ft.



SECTION BB

VENTILATION PLANT P1
 OPTION 1
 SCALE 1/8" = 1'-0"

Design Phase - Status

- Conceptual Design - Completed
- Preliminary Engineering – June 2009
- Final Engineering – November 2009**

** Projected date

Project View Forward*

- Bidding Process: January 2010 thru May 2010
- Construction Award: June 2010
- Project Completion: June 2013

*Projected Dates

MTA NYCT Eighth Avenue Emergency Ventilation Facility

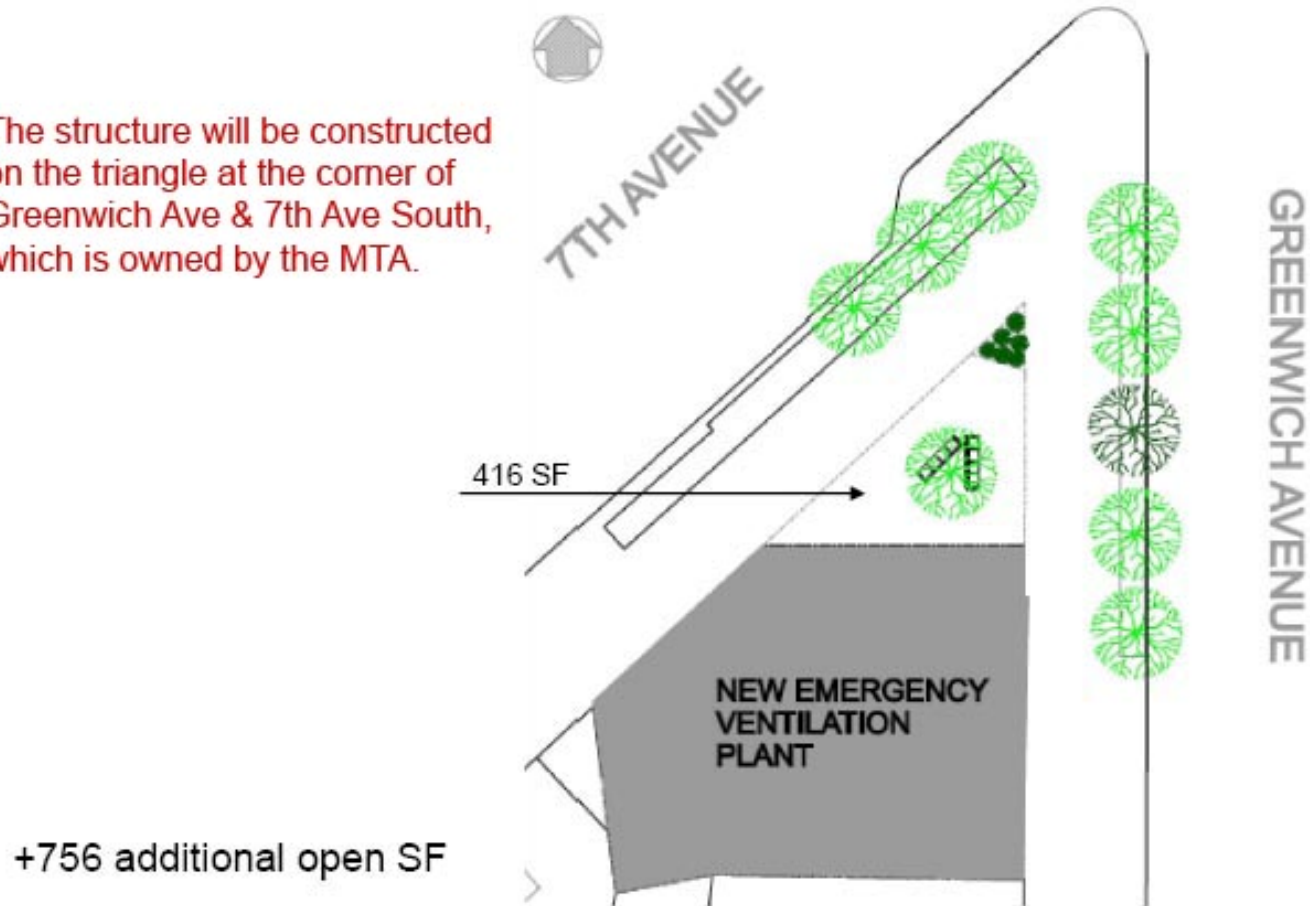
FACILITY DESIGN & FEASIBLE OPTIONS

Architectural Introduction
Judith Kunoff, Chief Architect

MTA NYCT Eighth Avenue Emergency Ventilation Facility

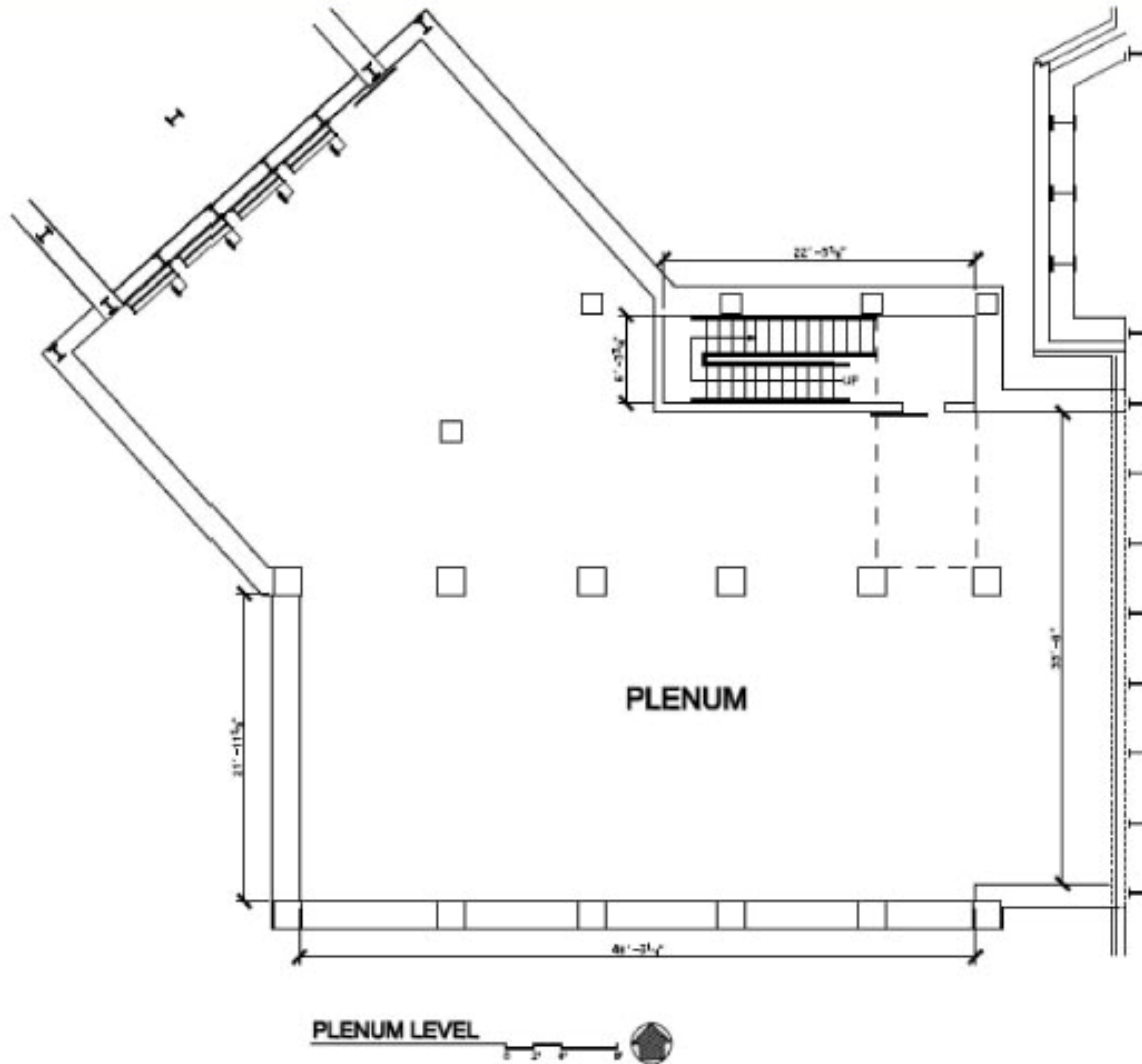
SITE

The structure will be constructed on the triangle at the corner of Greenwich Ave & 7th Ave South, which is owned by the MTA.



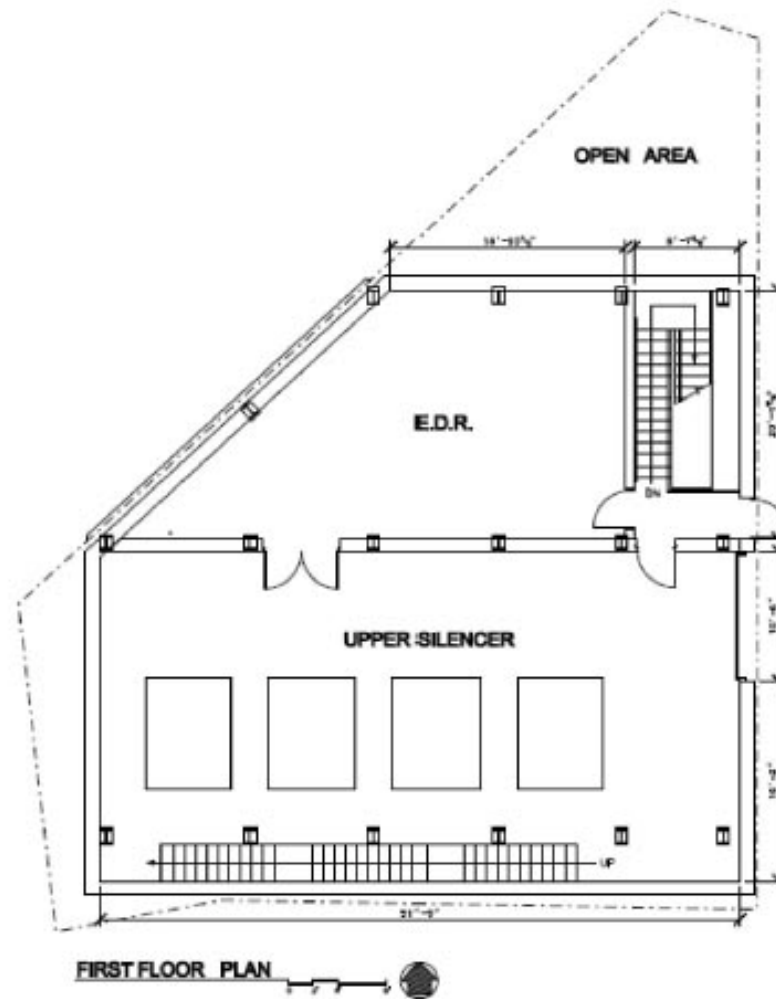
MTA NYCT Eighth Avenue Emergency Ventilation Facility

PLENUM LEVEL PLAN



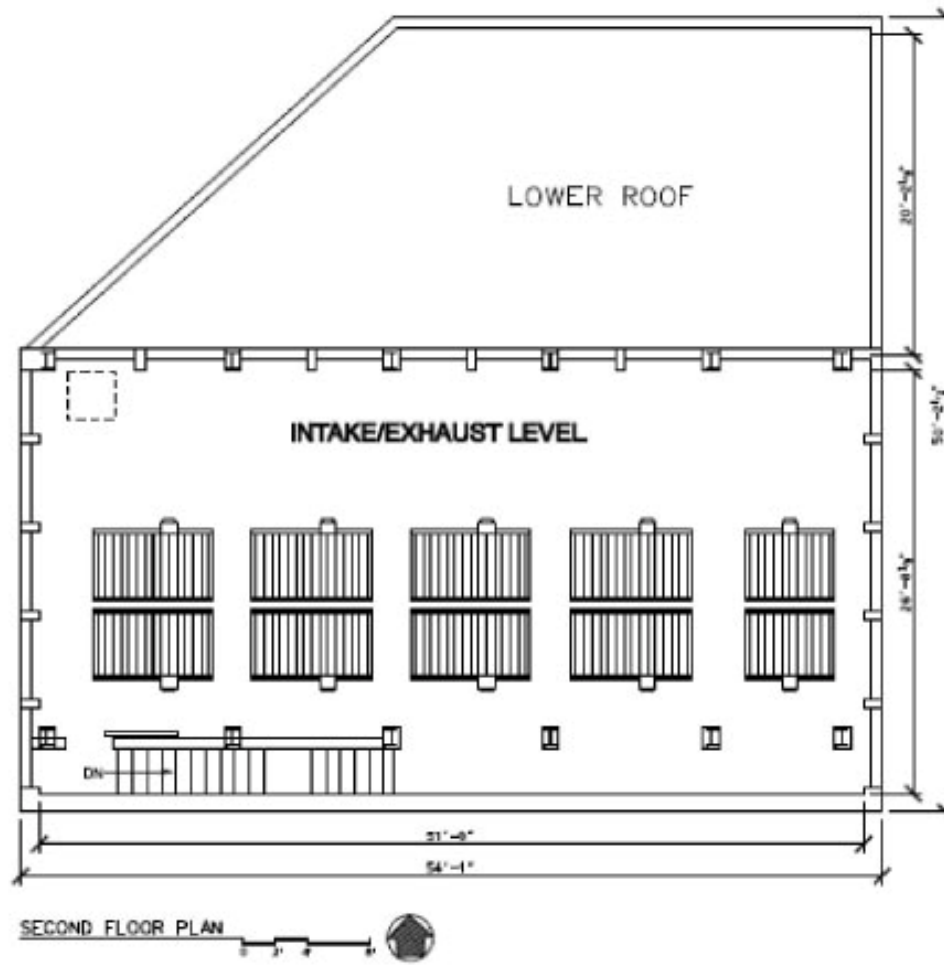
MTA NYCT Eighth Avenue Emergency Ventilation Facility

FAN CHAMBER PLAN



MTA NYCT Eighth Avenue Emergency Ventilation Facility

INTAKE / EXHAUST PLAN



MTA NYCT Mulry Square Fan Plant

MASSING



This is a rendering of what the proposed structure would look like.
The land is currently vacant.

MTA NYCT Mulry Square Fan Plant

MASSING



MTA NYCT Mulry Square Fan Plant

MASSING



MTA NYCT Eighth Avenue Emergency Ventilation Facility

OPTION 1



The MTA has proposed 3 options for the design.
Option 1 is the MTA's standard design, which is being built elsewhere in the city.
It is composed of masonry and glass.

MTA NYCT Eighth Avenue Emergency Ventilation Facility

OPTION 2



Option 2 consists of the standard building proposed in Option 1, but covered with a faux “historic” facade. This facade is actually only a shell surrounding the building. Option 2 is taller than Option 1, so it aligns with the building next door.

MTA NYCT Eighth Avenue Emergency Ventilation Facility

Facadism



Here are some other examples of buildings with faux facades.

MTA NYCT Eighth Avenue Emergency Ventilation Facility

OPTION 3



Option 3 also consists of the standard building proposed in Option 1, but with fencing around the outside covered in plantings. This option would require the cooperation of a local community group, which would be responsible for overseeing the maintenance of the plantings.

MTA NYCT Eighth Avenue Emergency Ventilation Facility

Vertical Gardens



Here are other examples of buildings covered in plantings.

MTA NYCT Eighth Avenue Emergency Ventilation Facility

“Tiles for America”



MTA NYCT Eighth Avenue Emergency Ventilation Facility

“Tiles for America”



The MTA has proposed 4 different options for preserving the “Tiles for America”, which hang on a chain-link fence on the site, and which memorialize the World Trade Center terrorist attacks.

MTA NYCT Eighth Avenue Emergency Ventilation Facility

“Tiles for America” – Inlay Band



In Option 1, the tiles are inlaid in a band along the bottom of the building.

MTA NYCT Eighth Avenue Emergency Ventilation Facility

“Tiles for America” Behind Glass



In Option 2, the tiles are on display behind glass.

MTA NYCT Eighth Avenue Emergency Ventilation Facility

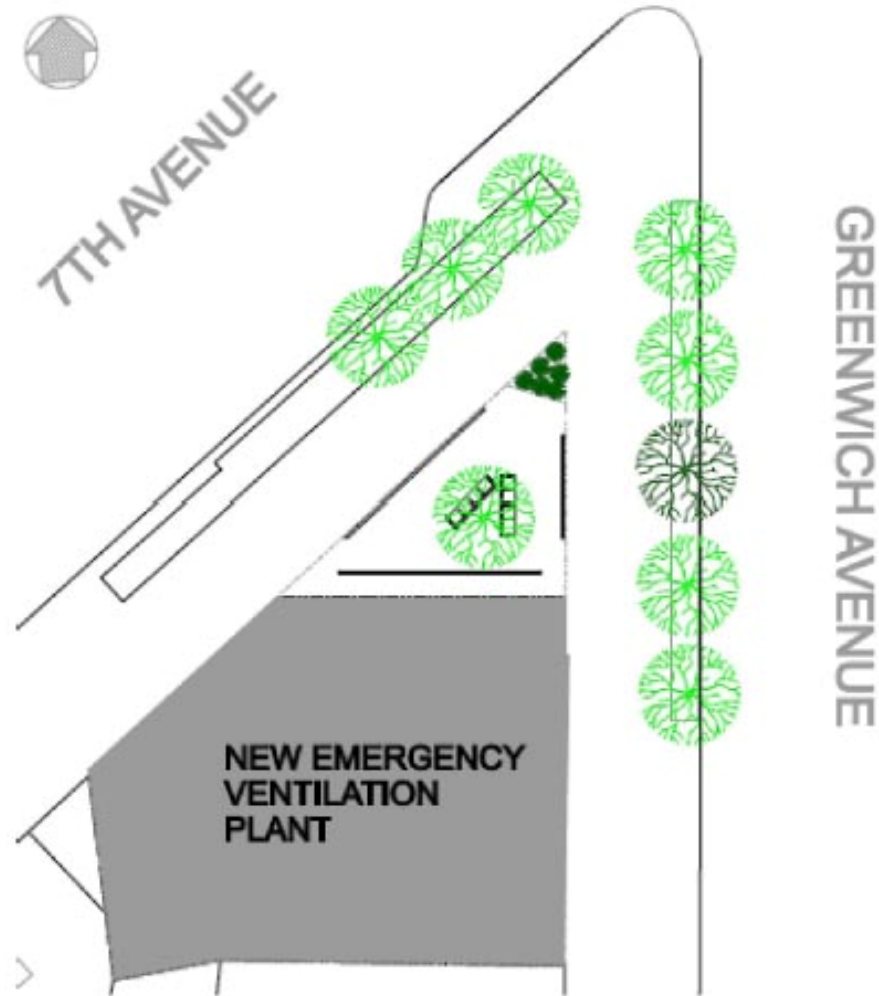
“Tiles for America” – Chain Link



For Option 3, the MTA has proposed constructing a chain link fence on which to hang the tiles. The chain link fence would be placed in the open space at the intersection of Greenwich Avenue and 7th Ave South.

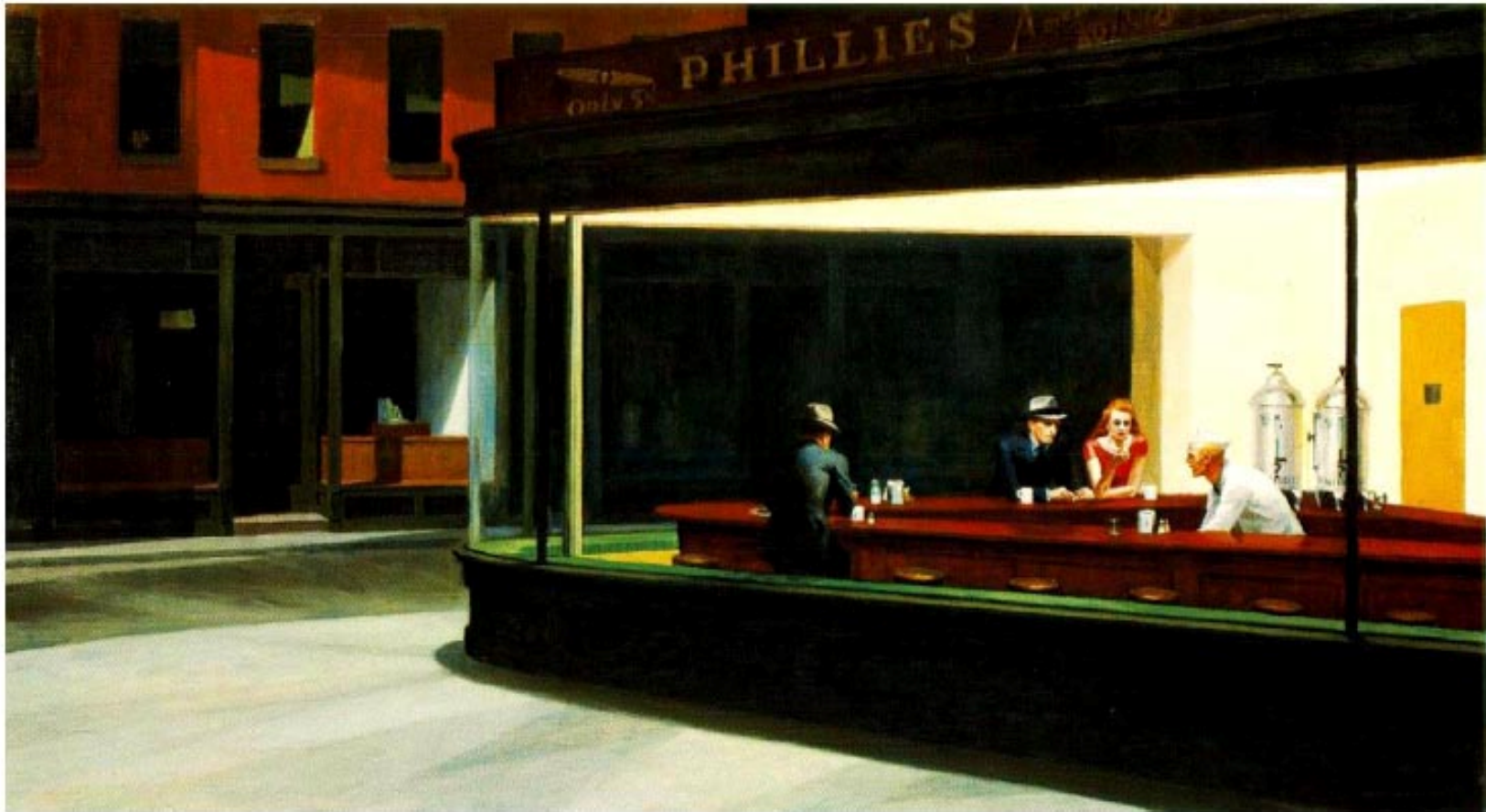
MTA NYCT Eighth Avenue Emergency Ventilation Facility

“Tiles for America”



MTA NYCT Eighth Avenue Emergency Ventilation Facility

“Tiles for America” – Nighthawks

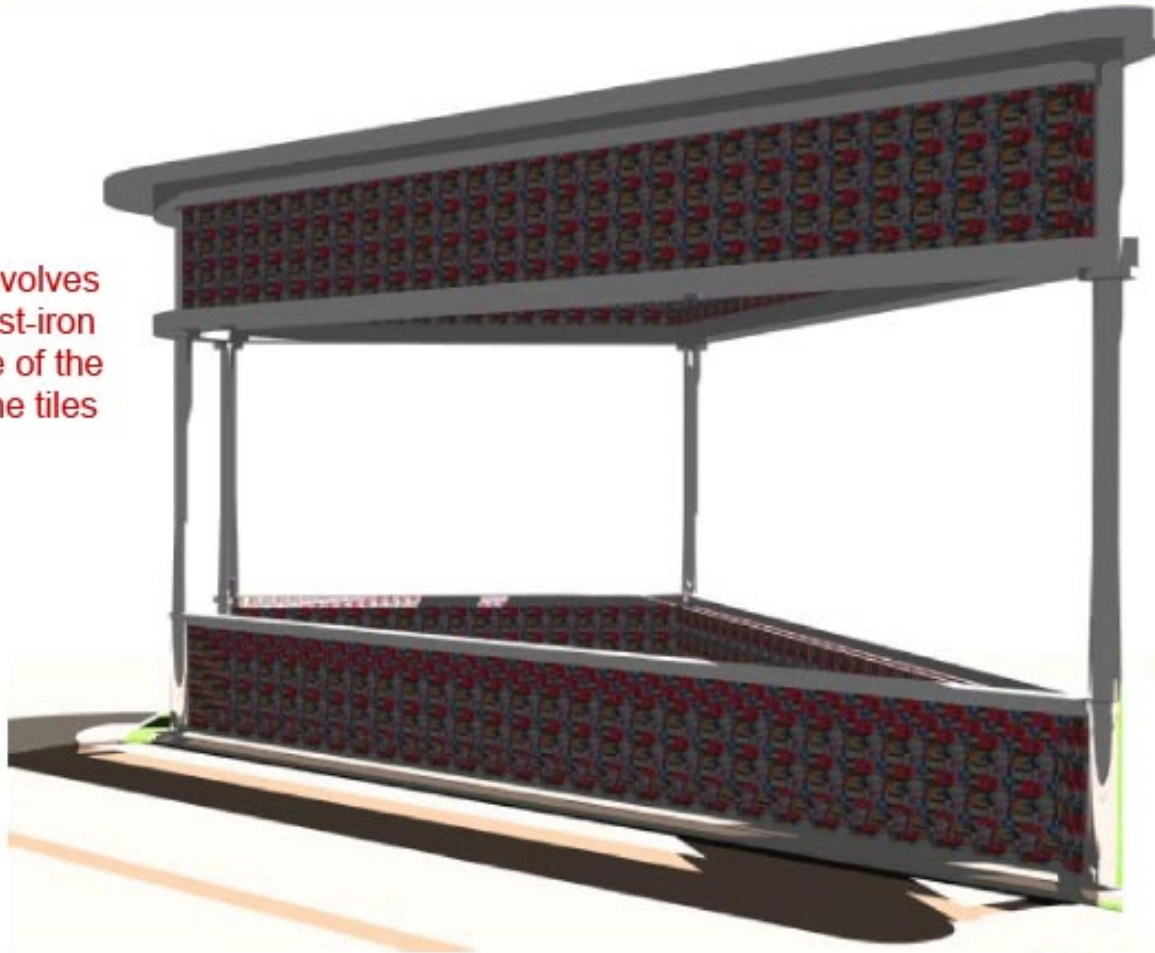


Though there does not appear to be historic evidence to prove it, many have conjectured that Edward Hopper's painting "Nighthawks at the Diner" was based on this site.

MTA NYCT Eighth Avenue Emergency Ventilation Facility

“Tiles for America” – Nighthawks

Thus, Option 4 involves constructing a cast-iron shell in the shape of the diner, on which the tiles would be inlaid.



MTA NYCT Eighth Avenue Emergency Ventilation Facility

“Tiles for America” – Nighthawks



The “diner” would be placed on the corner of the site.

COMMUNITY DESIGN INPUT

- Solicit Feedback Comments via CB 2 Website and Mail
- Community Board Meeting to Review Comments
- Public Comments to be incorporated in Design where Feasible

**We want to hear from you
Please send us your comments**

To submit comments via e-mail, visit:
www.cb2manhattan.org or

Write to: Eighth Avenue Ventilation Facility
Project, MTA NYC Transit Government and
Community Relations – D17.1 40,
2 Broadway, New York, NY 10004

Comments may be submitted before July 15

EIS on the MTA Website

[www.mta.info/mta/planning/ventplant/
deis.htm](http://www.mta.info/mta/planning/ventplant/deis.htm)